

October 2020

Electrical

Products & Solutions™

The Purchasing Guide for Electrical Contractors

www.epsmag.net



**Low Current
Ohmmeters Yield
Windfall of Features**



OmniMax™

Beautiful Performance

Seamlessly transition to LED without breaking the bank or losing the light you love. OmniMax is the compact, omnidirectional LED lamp that screws directly into your existing decorative fixtures and delivers the warm, pleasing light they were designed to produce.

- Dimmable with Bluetooth ConnectLED™
- Exceptional Thermal Management
- Photocontrol Failsafe™
- 10 Year Warranty

evluma

evluma.com
sales@evluma.com
425-336-5824



BREX LIGHTING

LIGHTING SOLUTIONS. SIMPLIFIED

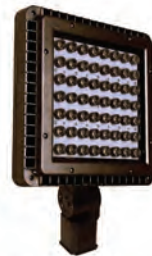
ONLINE LIGHTING. DIRECT TO YOU.



BOLLARDS



LED BULBS



LED FLOODLIGHTS



AREA LIGHTS



POST TOPS



WALL PACKS

CONTACT US FOR DISTRIBUTOR
& CONTRACTOR PRICING



877-273-9533
Sales@BREXlighting.com

1601 Wilmeth Road
McKinney, Texas 75069

BREXlighting.com



PUBLISHER

Danny J. Salchert

OFFICE MANAGER

Anita Salchert

CREATIVE DIRECTOR

Derek Gaylard

CIRCULATION DIRECTOR

Pam Fulmer

CONTRIBUTING WRITER

Jeff Jowett



PRESIDENT

Danny J. Salchert

EXECUTIVE AND ADVERTISING OFFICES

2009 Eagle Ridge Drive
Birmingham, AL 35242

phone: 205.981.4541

fax: 205.981.4544

www.epsmag.net

danny@epsmag.net

Electrical Products & Solutions™ is published twelve times a year on a monthly basis by ABD Communications, Inc., 3591 Cahaba Beach Road, Birmingham, Alabama, 35242, USA. *Electrical Products & Solutions™* is distributed free to qualified subscribers. Non-qualified subscription rates are \$57.00 per year in the U.S. and Canada and \$84.00 per year for foreign subscribers (surface mail). U.S. Postage paid at Birmingham, Alabama and additional mailing offices.

Electrical Products & Solutions™ is distributed to qualified readers in the electrical contracting industry. Publisher is not liable for all content (including editorial and illustrations provided by advertisers) of advertisements published and does not accept responsibility for any claims made against the publisher. It is the advertiser's or agency's responsibility to obtain appropriate releases on any item or individuals pictured in an advertisement. Reproduction of this magazine in whole or in part is prohibited without prior written permission from the publisher.

POSTMASTER: Send address changes to ABD Communications, Inc., P.O. Box 382885 Birmingham, Alabama 35238-2885

PRINTED IN THE USA

COMPANY PROFILES

4 Generator InterLock Technologies, LLC

6 Protect Yourself
Miller Safety Consultants — *A Leader in Arc Flash Protection*

COVER STORY

8 Low Current Ohmmeters Yield Windfall of Features

BY JEFF JOWETT

CASE STUDY

16 Emerson Helps Reduce Light Pollution in Permian Basin with Appleton LED Floodlights
Emerson's Appleton™ Areamaster™ LEDs maintain dark skies for nearby McDonald Observatory research and education

PRODUCT SPOTLIGHT

31 New Retrofit Solution to Fire Rate Low-Profile LED Recessed Lights

DEPARTMENTS

20 INDUSTRY NEWS

26 NEW PRODUCTS

32 AD INDEX

ON THE COVER

Image courtesy of Megger





Brandon Industries® Offers an Extensive Lineup of High Value, Decorative Lighting Solutions For Your Next Project!

LED Post Tops • Base and Poles • Globes • Bollards • Complete Lighting Units

Your neighborhood or downtown district deserves defined character – our distinct and made to last pedestrian scaled lighting solutions deliver an experience beyond your expectations.



LED Lighting | Decorative Signage | CBU's & Mailboxes | Site Furnishings

800-247-1274

BrandonIndustries.com

Generator InterLock Technologies, LLC

Generator InterLock Technologies, LLC, is a small-based company that manufactures and sells its products across the country. The company was founded after Hurricane Isabel hit the east coast in 2003. The product was developed to meet the need for a safe way to use portable generators to power homes in the event of power loss.

The initial inspiration for the product came from a persistent friend of an electrician working for Master Electrical Services. As electrical contractors, they had seen various unsafe and illegal methods that people had used to try to power their houses with their portable generators. The electrician set out to develop a product that would meet National Electrical Code requirements and at the same time be cost effective and convenient for the homeowner. From that original inspiration came a new company: Generator Interlock Technologies or GIT.

The Interlock Kit is a simple safety product that locks out the Main breaker in the existing home panel and allows for the portable generator to power the home through a back feed generator breaker. While many electrical inspectors liked the product; they all agreed that the product would have to be listed to UL standards. After thousands of dollars in fees, rigorous tests, a year of changes and modifications, the Interlock Kit was finally approved for production to be used with panels listed under UL Standard 67.

The company started filling orders in early 2005, using Master Electrical Services as its basis for customer awareness.

Starting with a few kits that fit the most recent Square-D and Cutler Hammer panels, the offerings grew to over 30 different models in less than one year. Generator Interlock Technologies now has kits for panels from 30 years ago to the most current and they continue to add new kits to meet their customer's needs. While contractors in Florida and the North East are the biggest customers, Interlock Kits have been sent throughout the United States and parts of Canada. Whether the power loss is due to coastal hurricanes or from crippling ice storms in the northern , GIT has a kit that will allow customers to keep the power on in their homes.

The Interlock Kits are designed to be installed by licensed electricians and are cost effective for both the customer and the installer. Other products on the market such as generator sub-panels and transfer switches require extensive rewiring of the home panel, often taking the electrical contractor 6 to 8 hours to install. With the Interlock Kit, a qualified electrician can install a complete system in 2 hours or less by simply mounting the correct kit to the face of the panel and wiring a gen-



erator convenience outlet to a breaker installed in the panel.

To use their portable generator, a homeowner plugs an extension cord from their generator to the new generator convenience outlet. He then starts the generator, turns off the main breaker, slides the Interlock Kit, turns on the generator breaker and selects the circuits for use up to the capacity of the generator.

Generator Interlock Technologies' Kit is a defining safety product that has been recognized as a Innovation Award Winner by *Electrical Contracting Products* magazine and one of the Top Products by *Electrical Products and Solutions* magazine.

Generator Interlock Technologies, LLC, has taken a problem of safety and convenience and developed a system to keep danger and expenses to a minimum. Starting with an idea of helping a friend in need, to helping thousands across the country, GIT continues to grow due to its commitment to deliver a quality product. Visit www.interlockkit.com for a complete list of products and details. □

With the Interlock Kit, a qualified electrician can install a complete system in 2 hours or less by simply mounting the correct kit to the face of the panel and wiring a generator convenience outlet to a breaker installed in the panel.

INTERLOCKKIT

A Generator InterLock Technologies Product



Generator InterLock Technologies

**Quickly & Safely Connect
Portable and Standby Generators to
Home Panels with the INTERLOCKKIT**

Advantages over existing options include:

- Quick installation that provides the contractor and consumer with less cost.
- Our kits allow you to safely and legally use generators to feed the existing panel, permitting quick and convenient use of all original circuits.
- InterLock Kits retrofit to any existing panel and require no additional wall space.
- Tested for use with UL 67 Listed Panelboards
Ref. Wyle Laboratories Test Report T52431-01
- Same day shipping available on all models.

**Quick installations make you more money.
Do yourself and your company a favor and
learn more about the InterLock Kit today!**



**To order or learn more about the INTERLOCKKIT
visit us at www.interlockkit.com or call 804-726-2448**

Protect Yourself

Miller Safety Consultants — *A Leader in Arc Flash Protection*

Vince Miller started Miller Safety Consultants, a veteran owned business in 1999. The goal of the business was to provide cost effective safety consulting, employee training such as: confined space entry, fall protection, electrical safety and provide sales of electrical shock and flash protective equipment and fall protection equipment to businesses in the Washington DC area.

Reliance Industries provided fall protection products and much of the sales and training was on behalf of the supplier. In 2000, the owner decided to retire from his business, and Vince decided to discontinue the fall protection line of his business and concentrate more in the electrical training and products.

Vince had been a distributor for Certified Insulated Products (CIP), a manufacturer of electrical insulated tools and electrical arc flash clothing manufactured by Otex in Rochester, New York. As a distributor, Vince provided sales through his internet website and much through relationships with electrical contractors. His training was a classroom environment and was provided directly to customers but he also taught as a sub-contractor for other safety consulting companies and the

Chesapeake Safety Council in Baltimore, Maryland. In 2005, Vince partnered with Vivid Learning Systems in Cascades, Washington to provide on-line training in safe work practices.

Training in electrical safe work practices is still provided locally in the Washington DC area and as a partner with an electrical engineering firm and online. The training is based on the Occupational Health and Safety Administration (OSHA) standards and the National Fire Protection Association (NFPA) 70E standard.

Miller Safety Consultants is now a distributor for Cementex USA, Burlington, New Jersey, for insulated tools and equipment and clothing from OTEX Protective, Rochester, New York.

The majority of his sales of products are from the web-based store. Cementex is

nationally known for their quality equipment. Otex Protective is becoming more known for their quality clothing. For years, they have manufactured their products under other provider labels. Vince chose to not create his clothing line, but to sell the manufacturer product.

Vince has worked with many electrical company employees to fine-tune the clothing to be more comfortable for the user. Working closely with the manufacturer, they have made slight changes in how the cloth pattern was modified to meet final production. An example is the lightweight 40 Calorie vented hood offered by Otex.

The material is of the latest technology. The vented assembly is constructed for balance on the back of the hardhat and the airflow is 27 CFM to prevent fogging of the face shield and provide cooling to the worker. It took over a year to develop the product with the user prior to having the hood “flash tested”. This product is now standard issue with many electrical contractors.

Being a small business and having quality providers has resulted in satisfied customers for Miller Safety Consultants. Being a direct supplier for OTEX Protective, another small business means customized customer needs can be met. □

*For more information, visit
Miller Safety Consultants at:
www.electricalsafety supply.com, email
Vince at: sales@millersafetyltd.com
or give him a call at (703)367-0404.*



The V5™ 40 Cal Ultralight Lift Front Hood System

1. V5™ High-Volume Ventilator with ArcSense Interrupter™
 - Patent-Pending ArcSense Interrupter™ shuts off airflow after an arc flash, preventing further inhalation of manganese fumes
 - 27 CFM blower fans
 - Snap-in design, removable in seconds
2. Milwaukee M12 rechargeable battery and receiver
3. 1:1 Balance: Perfectly balanced back-to-front
4. Paulson face shields and brackets
5. Hood Handle for easy removal or transport
6. LED Head Lamp included

ULTRALIGHT Premium

Protect yourself from "Arc Flash"

ARC FLASH LIFT-FRONT HOOD WITH V¹² HIGH-VOLUME VENTILATOR Compact. Powerful. Reliable

Our V¹² High-Volume Ventilator boasts an unexpectedly quiet, high output (35+ CFM) turbine fan to cool and circulate the ambient air within the hood. Fully protected beneath it's durable ABS shell and added fabric layering, the V¹² High-Volume Ventilator isn't just compliant, it's superior.



40 CAL/CM2 ULTRALIGHT CLOTHING BY OTEX

Our new dual-layer Ultralight clothing takes advantage of DuPont's® dedication to scientific advancement and Westex's® industry leading dependability. Weighing in 37% lighter than traditional HRC4 PPE, our Ultralight Clothing is the most innovative contender in the lightweight arena.

HYBRID LAYERING

Combined Fabric Weight: 14 oz

Outer Layer: DuPont® Protera
Color: Navy

Inner Layer: Westex Ultrasoft
Color: Safety Orange



CALL US TODAY

(703) 367-0404

OR VISIT OUR ONLINE ELECTRICAL SAFETY EQUIPMENT STORE
www.electricalsafetysupply.com

Low Current Ohmmeters Yield Windfall of Features

BY JEFF JOWETT

THE LOW RESISTANCE OHMMETER appeared just over a century ago, at the dawn of the electrical industry and the development of test instrumentation. A genuine low resistance ohmmeter is designed to measure less than 1Ω . Accordingly, it must have sufficient test current to accurately measure to minute levels. This is a critical differentiation from common resistance functions appearing in multi-purpose instruments like DMMs. A good DMM may measure down to 0.01Ω . By contrast, a good low resistance ohmmeter will measure to 0.1 micro-ohms ($\mu\Omega$). Such precision calls for considerably more test current than can be achieved from a few milli-Amps.

For over a century, the standard test current for low resistance ohmmeters has been 10 Amps. But many standard values in electrical testing are not necessarily derived rigidly scientifically but by a process that includes compromise and practicality. A DMM can give you a hundredth of an ohm with milli-amp test current, but to range down to a millionth, you need a robust test current and so 10 Amps became industry standard...and remained so for about a century. Twenty-First Century advances in the operation, precision and reliability of test instrumentation has made it possible for smaller test currents, where desirable, to be applied without loss of reliability and repeatability. What does that gain for the operator?

One immediate benefit is size reduction, down to a conveniently handheld instrument. Traditional models have been reduced in size and weight over recent years, but mainly in small increments. We now have available conveniently handheld models that test at 2 Amps.

This is a revolutionary combination of vigorous testing current with operator convenience. But the first and most indispensable requirement to look for in size reduction of any electrical test equipment is arc flash safety. If an "event"... as the utilities like to call them...occurs on the line, the operator needs to be fully protected against arc flash/blast that can otherwise be lethal! The reliable measure of this is the IEC61010 Rating. Do not buy an instrument that is rated below the standards of your work. As the casework becomes smaller to fit the operator's hand, maintaining IEC safety becomes a challenge. Electrical components must have sufficient creepage and clearance distances to preclude deadly arcing within the instrument. Be sure to understand that the CAT rating (III or IV) of the instrument matches that of the work environment and also includes a maximum voltage rating for the system.

Having met the basic challenge of size reduction without (CONTINUED ON PAGE 10)







current compromise or loss of safety opens a cornucopia of additional conveniences that can be built into state-of-the-art models. Testers of years ago focused on the measurement, and older testers are often equal to modern ones in that regard. But they may have offered little else. Today's 2A testers typically can measure a range like $1\ \mu\Omega$ to $2\text{ k}\Omega$ with 1% accuracy, but also offer speed, less down time, and minimal chance for error. Displays provide a plethora of information that keeps the operator focused with less chance of mistake while testing quickly. Full-color displays are not just for snazzy looks. By simultaneously displaying additional test information delimited by a color pattern, the operator can move swiftly and error-free without having to put down the instrument, check other sources, and so on. A prime example is a "Difference Meter" function. This function will display a series of measurements not by their hard

numbers but by the difference from a base measurement. Operators can check connections to a panel board, a series of similar connections and the like in seconds, without reference to any other document. The display positions them along a scale with % change from baseline with convenient notations to catch the operator's attention. Hard numbers are also retained, not discarded. The difference function substitutes for constant reference to pass/fail criteria, a valuable saving in time and potential mistakes.

Another vital function is the ability to safely test inductive loads. With a dc test, some test items can store enough energy to be lethal if not judiciously tested. A modern tester helps! With a selected inductive mode, current can be limited to 1 A for faster charging, quicker result that still meets all parameters. Particularly adapted for items like small electric motors and power transformers, these items

must come to full charge before precise, reliable measurements can be made. Otherwise, the charging process merely confuses the operator and lends to incorrect results. The display will indicate that this process is underway and not complete. An added capability that the tester may have is an AUTO mode that senses when the IUT has come to full charge and then stops. This is a valuable function in saving time and error, especially for relatively inexperienced operators, as charging can introduce a confusing element of instability that can waste time and lead to errors.

A vital function largely unheard of not many years ago but of ever-increasing importance in modern industry is the use of especially long test leads. These can load down a tester and defeat the test in a model not properly designed for it. But the emerging industry of wind power makes this function a necessity. The high, revolving blade tips are inviting targets for lightning strikes that can do debilitating levels of damage in the wink of an eye! The grounding conductor that protects the blade can be under considerable stress and must be regularly tested. Long test leads of some 300 feet can be burdensome to the tester, but the selection of a 1A test significantly speeds the successful completion of the circuit while allowing a lighter gauge wire that produces a reliable result in seconds. Lightning protection in aircraft can be easily measured wing tip to wing tip. Lightning protection in general is becoming (CONTINUED ON PAGE 12)



Spot the difference!

Megger DLR02

The **NEW DLR02** from Megger is more than an upgrade. It's a truly hand-held lightweight 2 Amp Digital, or Ducter™, Low Resistance Ohmmeter.

One of the new innovations on the **DLR02** is the difference meter. This feature allows repetitive measurements to be easily compared with an initial reference measurement. The difference meter translates percentage difference to a needle/pointer movement to make it visually easy to see change.

What other differences are in the **DLR02**?

- Dedicated long test lead mode (ideal for wind turbine testing and aerospace applications)
- Inductive test mode with a new automatic stop
- Ability to compare three measurements at one time

The **DLR02** is equally at home in manufacturing as it is in a switchyard. It is designed for ease of use, to provide highly repeatable test results, and versatility.

So, spot the difference with the **NEW DLR02** from Megger.

**ENTER
TO WIN
A DLR02!**

Can you spot the differences in the pictures above?

Let us know what you find for your chance to win a DLR02!

Visit: us.megger.com/DLR02contest

Contest ends November 30, 2020

Megger[®]

more important with the increased use of sensitive computer-controlled equipment, and long test leads are invaluable in the maintenance of lightning protection.

Another significant time-saving feature is advanced fuse protection. Yes, the operator and instrument must be protected from accidents and faults that can occur beyond the operator's influence. But this needn't be expressed in repetitive annoying fuse failures that interrupt testing and drastically eat up time. A quality tester can have active protection against inadvertent live connection without blowing a fuse. Protection up to 600 V is standard while a backup fuse protection at 1 kV keeps the operator safe against catastrophic events.

An easily-overlooked function is forward/reverse polarity, where the tester will automatically measure in both polarities, display them both on a subscale, and average the readings on the main display. This eliminates the effects of interference such as thermal EMFs. These are normally of no consequence but loom

large when trying to measure in $\mu\Omega$ s.

A leading-edge feature against nuisance downtime in modern testers is firmware update. This is almost unheard-of across a broad spectrum of testers but is available on the leading edge. No more agonizing weeks of waiting while critical equipment is returned to the manufacturer for "upgrades". This can be as simple as connecting a USB flash drive and following basic directions on screen. The user interface may be upgraded as well as measurement firmware.

A 2-Amp Low Resistance Ohmmeter can be a valuable tool in automotives and electric vehicles for checking battery connections, weld quality and robotics. In data centers, during installation of main panels, generator and UPS systems; verification of protective device contact resistance, busbar feeds and lapped joints, and cable lug connections. Track joints and signaling connections can be tested for railroads. Marine cable-laying applications as well as cathode protections

systems and ship-to-shore bonding can be tested. The bonding between welded joints and grounding systems are tested in oil and gas pipelines. The space industry requires structural metal-to-metal bonding, ground network and carbon fiber bonding. Medical applications require grounding and bonding against shock. Panel and switchgear manufacturers need production line testing, site commissioning and maintenance. Robotics call for regular testing of wiring and connections subject to stress, movement and vibration. And the electrical infrastructure affords many testing situations, including cable resistance and lug connections, interlinking busbars, switchgear and protective devices. Be certain that the tester includes 400 Hz noise immunity if used in the aircraft, railroad or shipbuilding industries.

The challenge of measuring down to $1\mu\Omega$ with a handheld tester has yielded a rainbow of additional features and functions to make testing easier, faster and more reliable. □

Now Even GREATER Labor SAVINGS!

New Hinged Cover 8" to 16"



- ✓ Removable cover that opens more than 200° with easy access to install devices in the cover and inside the box
- ✓ NEMA 1, 2, 3R, 4, 4X, 12, 13
- ✓ Back panels available for all sizes
- ✓ Hand-close fastener tabs
- ✓ 100% nonmetallic

KRALOY®
JBox®
The Next Generation Junction Box

New Larger Sizes 14" & 16"



- ✓ Largest size range available in a molded PVC junction box
- ✓ NEMA 1, 2, 3R, 4, 4X, 6*, 6P*, 12, 13
- ✓ 100% Nonmetallic
- ✓ Hand-close fastener tabs
- ✓ Back panels available for sizes 6" and up

*Applies only to 4" to 12" non-hinged covers



FULLY CERTIFIED
UL 50 / CSA C22.2 NO. 94.1, UL 50E / CSA C22.2 NO. 94.2, CSA C22.2 NO. 40 CSA C22.2 NO. 85

www.kraloyfittings.com

Products are manufactured by IPEX Electrical Inc. and distributed in the United States by Kraloy, a division of Multi Fittings Corp.

Three-Phase Power Quality Analyzer & Logger **PowerPad® III Model 8336**

Measure AC & DC Voltage, Current, Power and more!



DataView®



Easy-to-use, compact and shock resistant

- 2GB of memory — store trend data with additional internal memory for storing alarms (10K events up to 40 different parameters), transients (up to 210 containing four cycles of active input) and screen snapshots (up to 50)
- Measurement of TRMS voltages up to 1000Vrms AC/DC for two-, three-, four- or five-wire systems
- Measurement of TRMS currents up to 10,000Arms (sensor dependent)
- Direct measurement of neutral current & voltage
- Frequency measurement (40 to 69Hz systems)
- Record and display trend data as fast as once per second for one month for up to 25 variables
...and much more!

www.aemc.com
sales@aemc.com



AEMC®
INSTRUMENTS

CHAUVIN ARNOUX GROUP

DRIVEN TO DELIVER

THE CONSOLE X



- Clean up those cabs and get your fleet organized!

Your Total Mobile Office Solution

The Truck Console-X combines your Laptop Work Station, Radios, Speakers, Cables, Storage and Cup Holders. No Drill Installation Brackets Included.

The **Truck Console -X** is the latest innovative mobile office solution to join the Mobile Desk brand family of products. This complete control, communication and convenience Utility Truck Console is becoming the new standard for fleets of all sizes. The design of the **Truck Console -X** has originated from our years of experience working directly with the lineman, supervisors, communications, and fleets of some of the most notable utility companies in America. Loaded with standard and optional features that maximize ergonomics, productivity, and fleet/telecom standards into one Mobile Office Solution.

Screen Out™ SCREEN-DISABLER™
Blanks your screen while you drive!

Our Patented Screen Out App **Stops texting** while driving for all employees on all tablets, laptops and smart phones that run Windows, iOS or Android Operating Systems. **It's that easy!**

877-663-3375 Ext 303. www.screenout.net

Find us on:



MOBILE DESK
MOBILE OFFICE SOLUTIONS

1-877-663-3375

www.mobiledesk.com

©2018 Mobiledesk

First there was 4 square...
and now the **REVOLUTIONARY 5 Square® Box!!**

You've struggled with 4 Square boxes for years - you know how small, cramped and time consuming they are. Finally, there is a solution that allows you the space you have always needed.

The **5 Square®** Boxes (5" x 5" x 2-7/8") provide up to 88 in³ of interior volume which more than doubles that of most existing boxes on the market.

Create a robust and unrivaled infrastructure for the life of your facility with the **5 Square®** Products!

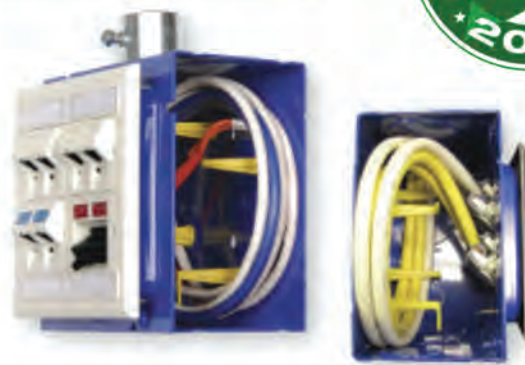


Fire Signal



- TWICE THE VOLUME AS MOST BOXES
- SAVE LABOR...INCREASE PROFITS
- ELIMINATES TROUBLESHOOTING TIME AND COST
- FULLY UPGRADEABLE SYSTEM
- SPECIFIED BY ENGINEERING FIRMS, HOSPITALS, UNIVERSITIES & GOVERNMENT AGENCIES
- AVAILABLE IN ZINC OR RED

Telecommunications



- INTEGRAL CABLE MANAGEMENT
- SAVE LABOR...INCREASE PROFITS
- FACILITATES MIN. BEND RADIUS REQUIREMENTS
- SUPPORTS CURRENT AND EVOLVING SYSTEMS
- SUPPORTS PoE PLUS
- SPECIFIED BY ENGINEERING FIRMS, HOSPITALS, UNIVERSITIES & GOVERNMENT AGENCIES

Emerson Helps Reduce Light Pollution in Permian Basin with Appleton LED Floodlights

Emerson's Appleton™ Areamaster™ LEDs maintain dark skies for nearby McDonald Observatory research and education



SPANNING WEST TEXAS TO SOUTHEASTERN NEW MEXICO,

the Permian Basin is one of the most prolific oil and natural gas geologic basins in the United States. Besides its famed energy reserves, the Permian Basin is also valued by astronomers for its pitch-black night skies, a natural phenomenon that has been threatened in recent years by oil and gas companies' floodlights. Required for nighttime visibility, each floodlight is powerful enough to safely illuminate several acres of oilfield.

Conventional HID floodlights have been sources of blinding glare due to a lack of shielding, poor placement, or incorrect aiming. To combat this problem, a collaborative effort between the members of the Permian Basin Petroleum Association, the Texas Oil and Gas Association, the American Petroleum Institute and the McDonald Observatory resulted in a series of lighting best practices. Emerson strongly (CONTINUED ON PAGE 18)



Endless Options from TCP

**Choose from 8,000+ SKUs of our
LED Direct Troffers**

Our DT Series can be used in virtually any application – perfect for schools, offices, restaurants and other spaces that use a T-bar grid ceiling.

Other reasons to love the DT Series:

- Back lit technology creates a full diffusion of even, uniform light
- Easy to install
- Slim and lightweight low-profile design
- Robust, durable frame holds up over time
- Substantial energy savings over fluorescent

**Learn More
and Find a Distributor
at TCPi.com/DTSeries**



Because the Areamaster Generation 2 floodlights are based on LED technology, they achieve overall better directionality to focus light only on the intended area, resulting in darker skies overhead.



supports this endeavor and the goals it strives to accomplish.

Emerson, through its Appleton brand, has partnered with Permian Basin drillers to minimize creeping light pollution caused by conventional floodlights, with a targeted goal of preserving the dark skies needed to conduct astronomical research and education at the nearby McDonald Observatory. This world-renowned observatory sits atop the Davis Mountains under some of the darkest night skies in the continental United States. Over the past decade, the sky along the observatory's northern horizon, in the direction of the Permian Basin, has been steadily brightening, due to new exploration for oil and gas. Without reducing the skyglow from these operations, the research for which the McDonald Observatory is famous will be compromised.

According to Ellen Helm, Director of Product Marketing for Emerson, oil and gas operators in the Permian Basin quickly got on board the dark skies initiative when they realized that recom-

mended lighting improvements -- such as warm white LEDs and glare-reducing shields -- not only reduce light pollution, but also save energy, improve visibility and enhance safety on the work site.

"As a corporate citizen in the Permian Basin, Emerson seeks to reduce the impact of outdoor lighting products on the environment by offering LED solutions that minimize glare and reduce light trespass," said Helm. "The Permian Basin is proof that the goals of higher productivity and environmental stewardship are not mutually exclusive."

Last year, more than 300 Appleton Areamaster Generation 2 LED Luminaires were installed on three booster stations of a major Emerson Permian Basin customer. Visors on the floodlights shield the lights and point them downward to reduce glare, limiting light intensity from the luminaire in the region between 80° and 90° from the ground and helping customers comply with Permian Basin lighting ordinances. Because the Areamaster Generation 2 floodlights are based on LED technology, they achieve overall

better directionality to focus light only on the intended area, resulting in darker skies overhead. In addition, their warm color temperature (3000K CCT) reduces environmental impact and disruption to natural circadian rhythms in stark contrast with the bluish "daylight" lighting often associated with LED floodlights.

Appleton Areamaster Generation 2 LED floodlights are used throughout the three booster stations to provide illumination without exceeding the minimum number, intensity, and coverage required for safety and basic security. Lighting is divided into separately controlled "zones" to avoid illuminating unused space, and is controlled by timers, sensors, or switches available to facility operators. Where possible retro-reflective or luminescent markers were installed instead of permanent lighting. □

For more information on the Areamaster product offering and other Appleton LED luminaires, please visit these websites: www.MasteringLED.com or www.emerson.com/appleton

REPAIR CONDUIT IN A SNAP!

No Tape • No Plastic Straps • No Metallic Straps

NO KIDDING!

*Designed especially for power, communications
and fiber optics.*



STEP 1
Remove damaged
conduit



STEP 2
Cut split duct
conduit to fit



STEP 3
Snap in
place

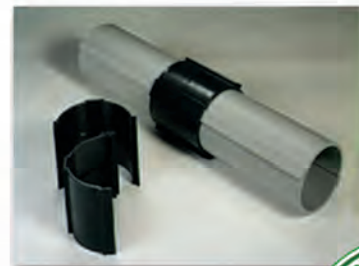
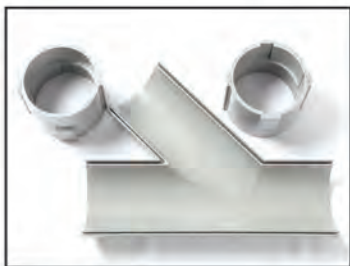
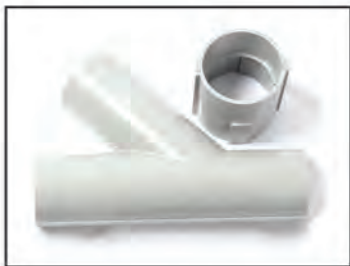


STEP 4
Attach
adapters



STEP 5
Finish job in
record time

"The World Leader In Split Conduit Products"



Conduit Repair Systems, Inc.

The World Leader In Split Conduit Products



800.670.1804 • 435.673.8724 fax • crs@conduitrepair.com • www.conduitrepair.com

Hy-Brid Lifts Meet Updated Safety Standards in U.S. and Canada

Hy-Brid Lifts, an industry leader in high-quality, low-level access equipment, meets and exceeds U.S. and Canadian standards to provide the highest level of safety and comfort for customers. Both standards – ANSI A92.20 and CSA B354.6 – are the baseline from which Hy-Brid Lifts engineers each lift model.

The CSA Group (formerly the Canadian Standards Association) determines the best practices for safe, reliable operation of access equipment in Canada. Just as ANSI does for U.S. customers, the standards provide a consistent benchmark for safe machine design.

“While the Canadian standards are very similar to the U.S. standards, it is important for us to note this achievement,” said Terry Dolan, Hy-Brid Lifts president and CEO. “Canadian customers can buy confidently, knowing the product was certified through standards set forth by a Canadian governing body.”

A professional engineer oversaw the CSA testing onsite at Hy-Brid Lifts’ facility. After rigorous testing, a Canadian professional engineer reviewed the technical documentation to certify the lifts.

“All Hy-Brid Lifts are designed with safety and efficiency in mind, and this testing solidifies our position in the industry,” said Ben Froland, Hy-Brid Lifts vice president of engineering. “All models passed the requirements with only a few slight adjustments. Besides that, we documented the performance of the lifts to ensure they meet the standards.”

This certification highlights the many aspects of Hy-Brid Lifts that make them a favorite among contractors, engineers, and others looking for the safest, most efficient equipment. These American-made lifts are compact enough to easily trans-



Hy-Brid Lifts meets and exceeds U.S. and Canadian standards to provide the highest level of safety and comfort for customers. Both standards – ANSI A92.20 and CSA B354.6 – are the baseline from which Hy-Brid Lifts engineers each lift model, including the PS-1930 shown.

port across the country and into Canada. Two of the newest models – the PS-1930 and the ZT-1630 – are part of the full range of CSA-certified products.

The PS-1930 is the tallest option from Hy-Brid Lifts, providing a working height of up to 25 feet. This model boasts an overall weight of less than 2,000 pounds, a fraction of the weight of competitive models. Unlike most other 19-foot scissor lifts, the PS-1930 doesn’t require folding rails. This model, along with all models in the Pro Series, is compatible with the company’s fluid containment system, LeakGuard™.

The ZT-1630 is part of Hy-Brid Lifts’ Zero-Turn Series. This series’ innovative point-and-go-style drive provides improved maneuverability in confined spaces. The ZT-1630 offers a working height up to 22 feet and is a more productive alternative to mast lifts on a jobsite. The innovative proportional point-and-go-style drive operation is unique to Hy-Brid Lifts and reduces the risk of costly damage on finished jobsites.



The ZT-1630 is part of Hy-Brid Lifts’ Zero-Turn Series. This series’ innovative point-and-go-style drive provides improved maneuverability in confined spaces. Like all Hy-Brid Lifts models, the ZT-1630 is certified by American ANSI A92.20 and Canadian CSA B354.6 standards. PHOTOS COURTESY OF HY-BRID LIFTS.

“The CSA certification, paired with the designs of our lifts, is an additional way to show we are producing the best equipment on the market,” Dolan said. “Customers are determined to find the safest, most efficient lifts for their operation, and we are here to deliver and go above and beyond those expectations.” □

HY-BRID LIFTS
BY CUSTOM EQUIPMENT LLC

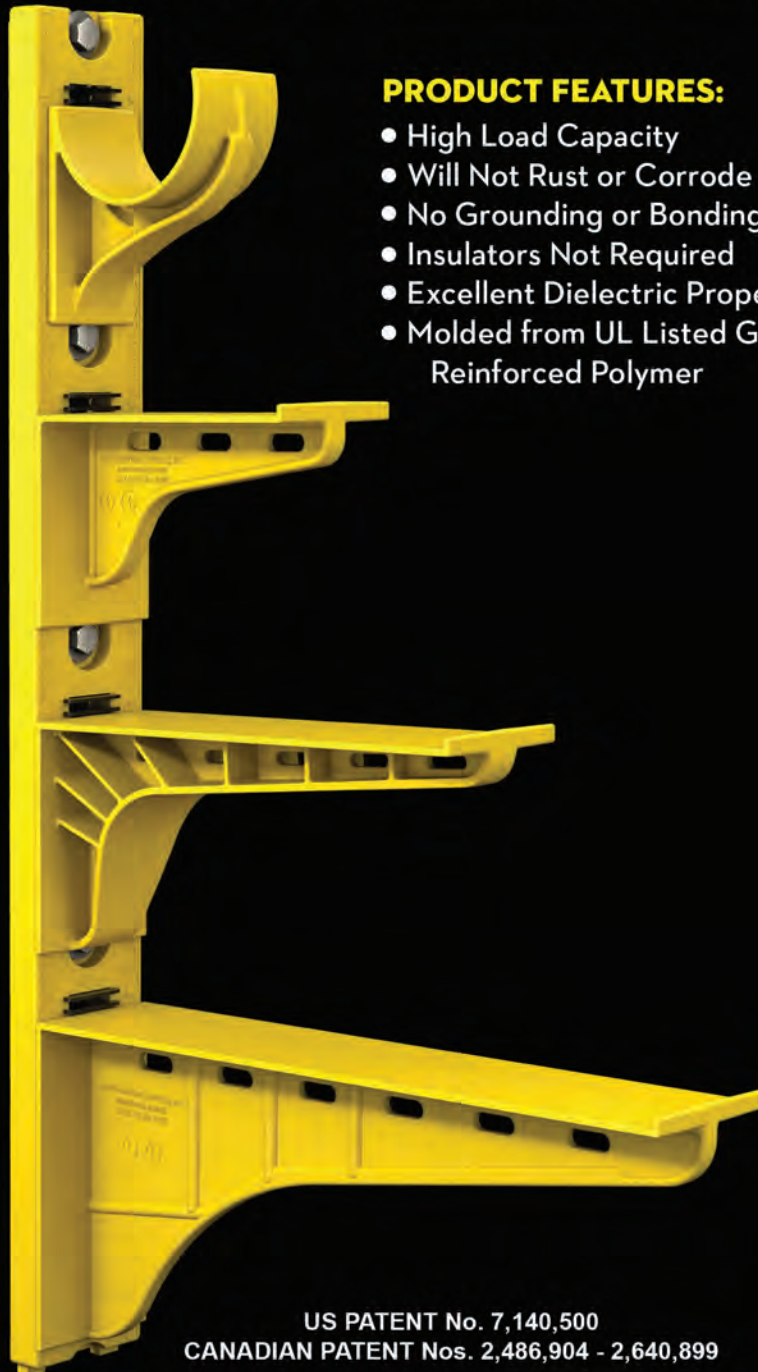
ABOUT HY-BRID LIFTS

Hy-Brid Lifts is a brand of Custom Equipment LLC. Hy-Brid Lifts engineers and manufactures all-purpose lifts in electric self-propelled and push-around models. The low-level lifts offer exceptional capabilities in a heavy-duty but lightweight design, are easy to maneuver and reach working heights up to 25 feet. Contractors and maintenance technicians can use them from start to finish for a wide range of applications in industries as diverse as construction, drywall, electrical, HVAC, painting and plumbing, industrial manufacturing and facility maintenance. For more information: Hy-Brid Lifts, 2647 Highway 175, Richfield, Wis. 53076; 262-644-1300; fax 262-644-1320; sales@hybridlifts.com; www.hybridlifts.com; or Facebook; Twitter; LinkedIn; Instagram and YouTube.

The Heavy Duty Nonmetallic CABLE RACK



For Power and Communications Manholes And Vaults



PRODUCT FEATURES:

- High Load Capacity
- Will Not Rust or Corrode
- No Grounding or Bonding
- Insulators Not Required
- Excellent Dielectric Properties
- Molded from UL Listed Glass Reinforced Polymer



HDL Arm Lock shown with
RA04 Arm and CR36-B Stanchion



3HDS - 3" throat saddle shown with
a cable secured by cable ties.



RA08 - 8" arm shown with three
cables secured by cable ties.

US PATENT No. 7,140,500
CANADIAN PATENT Nos. 2,486,904 - 2,640,899

UNDERGROUND DEVICES
INCORPORATED



420 ACADEMY DRIVE
NORTHBROOK, IL 60062
Phone: 847-205-9000 • Fax: 847-205-9004
Website: www.udevices.com

City Electric Supply Donates \$50K to the American Red Cross

The American Red Cross says financial donations and volunteers are needed now more than ever in the midst of the COVID-19 pandemic.

COVID-19 has impacted organizations around the world, including the American Red Cross. City Electric Supply is proud to share that it has made a \$50K donation to the organization through its social impact division, CES Cares.

“We are grateful for the ongoing support of City Electric Supply in support of the Red Cross mission,” said Keith Rhodes, CEO of American Red Cross North Texas Region. “Responding to disasters takes a team effort, and the generosity of our corporate partners helps ensure the Red Cross is there to help people in their time of need.”

The American Red Cross is currently responding to 40 major disasters across the country that have impacted thousands of Americans, from Hurricane Laura to the Western wildfires. The American Red Cross has been working hard to assist those in need through the relief process, but many have not yet reached the recovery phase. Some communities are still without power, and there are individuals still in need of a home.

“The need is great right now! The Red Cross is busy across the country running several large disaster relief operations,” said American Red Cross North Texas Regional Disaster Officer Katrina Farmer. “With over 90% of our workforce being volunteer-based, we simply need more compassionate people to help us to help communities that

are suffering from hurricanes, wildfires and other disasters.”

Disaster relief response during a pandemic comes with its own set of challenges as the American Red Cross wants to make sure clients and staff are safe throughout the process. Since the very beginning of the pandemic, the American Red Cross has found the investment in technology to be critical in continuing to serve communities and run responses on a national scale. The organization has also been using PPE equipment, practicing social distancing and utilizing technology to make sure that teams are still communicating with one another.

“This hurricane season has been super busy, and based on the weather models, it isn’t going to improve anytime soon. Financial gifts are also appreciated as we have incurred additional expenses for responding to a disaster in the midst of a pandemic,” said Farmer. “Investing in building out a more robust and volunteer-friendly technology initiative and procuring PPE are additional expenses implemented to keep staff and disaster victims safe.”

City Electric Supply, through CES Cares, has been a proud partner of the American Red Cross since 2016, and has donated more than \$300K over the years. Giving back to an organization that shelters, supports and feeds victims of disaster is one of the very reasons

why CES Cares was founded.

“CES Cares is excited to contribute to all the great work that the American Red Cross is doing,” said CES Social Impact Manager Karen Gray. “The current pandemic has made giving back to a number of urgent needs even more important. It has been a difficult time for communities around the world. We are proud to partner with such an integral organization and be a part of the vital work they are doing.”

Many have evacuated to Texas after the recent Hurricane Laura disaster. The American Red Cross has helped serve more than 48,000 meals and snacks; distribute over 25,000 clean-up, comfort and relief items; and shelter thousands of people. □



ABOUT THE AMERICAN RED CROSS

American Red Cross shelters, feeds and provides emotional support to victims of disasters; supplies about 40 percent of the nation's blood; teaches skills that save lives; provides international humanitarian aid; and supports military members and their families. The Red Cross is a not-for-profit organization that depends on volunteers and the generosity of the American public to perform its mission.

ABOUT CITY ELECTRIC SUPPLY

City Electric Supply (CES) is a family-owned electrical wholesale distributor headquartered in Dallas, Texas. The company was founded in 1951 by Tom Mackie in the United Kingdom and expanded to the United States in 1983. Today, CES employs more than 3,000 people in over 500 branches across the U.S. CES is dedicated to providing personalized service and support for customers in the residential, commercial, and industrial marketplace. While CES is a large company, it prides itself in keeping its founding principle of empowering people to make local business decisions by providing customers tailored services for all their electric supply needs.

Fire Rate Low Profile LED Downlights

IN SECONDS

INTRODUCING THE NEW

FF109-250 AND FF109-200

Fire Rated LED Light Covers



*Designed for **modern**, low-profile LED downlights*

The ideal solution for **retrofits** and new construction



Fits in **small spaces** • Installed in **seconds** • 60 minute **fire tested** • Fits up to **6" tall downlights**

“Papa” John Phillips Announces Retirement

Industry Veteran and Immensely Respected Icon to Step Away After More Than 35 Years

After more than 35 years in the industry, the last 18 years with Platinum Tools®, and with an unmatched reputation rightfully earned by everyone he worked with and knew, “Papa” John Phillips has announced his retirement, effective Oct. 2.

“John truly has been the ultimate employee and a true friend,” said Platinum Tools founder Lee Sachs. “I can’t thank him enough for what he brought to myself personally and towards the great success of Platinum Tools. John’s reputation in our industry is unmatched and irreplaceable and he will always be remembered for his loyalty, honesty, integrity and patience. Semper Fi...Always faithful, Always loyal, Always our friend.”

Phillips joined Platinum Tools, the leader in solutions for the preparation, installation, hand termination and testing of wire and cable, in 2002 as Sales Manager. In 2008, he handed off the sales manager responsibilities and took on the responsibilities of product manager, product development and product support.

“John joined Platinum Tools when we were small and looking to grow,” added

Sachs, who also recently took a first major step towards a well-earned retirement by stepping down from his role as Platinum Tools president. “John developed our core sales rep force and trained and assisted them in how to sell our products. He also developed our core customer base and provided invaluable support and assistance with our marketing programs and tradeshow. He’s also not bad at driving a forklift and shipping... although he tended to abuse the tape gun!”

Always known for his quiet, humble, and incredibly friendly demeanor, Phillips has always been the ultimate team player. His product knowledge is legendary in the industry and his great passion for passing that product knowledge on to Platinum Tools’ employees, reps, distributors, and end users is truly his legacy. The nickname “Toolman” is well deserved.

“I love my job, so hanging up my hat is not an easy task,” said Phillips. “In fact, I do so with mixed emotions...excited and at the same time sad. It is amazing how fast my 18 plus years with Platinum Tools passed me by. I have been in this industry for more than 35 years, and my

“I love my job, so hanging up my hat is not an easy task,” said Phillips. “I have been in this industry for more than 35 years, and my 18 years with Platinum were the best because of the strong friendships I built during this time with my associates.”



“Papa” John Phillips

18 years with Platinum were the best because of the strong friendships I built during this time with my associates. So, as I begin a new chapter in my life, these special friendships will be part of the journey!”

For more information on Platinum Tools and its complete product line, please visit www.platinumtools.com, call (800) 749-5783, or email info@platinumtools.com. □



ABOUT PLATINUM TOOLS

Platinum Tools LLC, an NSI Industries company, was created based upon two very simple objectives. First, develop the absolute best possible solutions for the preparation, installation, and hand termination of wire and cable. Second, implement an operational infrastructure that can deliver these products in an efficient, timely, and high quality manner. All of our products must absolutely satisfy three critical benchmark criteria...utility of function; quality of function; and economic value. Our people are our company. They, too, must be focused on and work to satisfy three critical benchmark criteria...customer satisfaction; product knowledge and expertise; and willingness to learn and adapt.

Affordable test equipment for 2020



Spitfire - Buried Low Voltage Cable Fault Locator

- ◆ Accurate
- ◆ Easy to use
- ◆ High energy output
- ◆ Proven reliability
- ◆ Compact design
- ◆ Lightweight

Wayfind'r - Impulse cable tracer

- ◆ Accurate
- ◆ Easy to use
- ◆ Connects directly to energized cables
- ◆ Distinct signal for easy tracing
- ◆ Traces direct buried and cables in conduit
- ◆ Rugged, compact design

Impulse Phaser - Cable / phase system

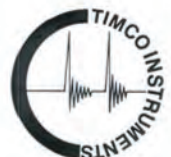
- ◆ Accurately identifies cables in trenches, vaults, conduits and enclosures
- ◆ Accurately identifies phases in multi-conductor cables
- ◆ Identifies jacketed, shielded, cables, even in pipe
- ◆ Easy to understand and use



TIMCO INSTRUMENTS, LLC

Phone: (401) 539-7120 Fax: (401) 539-6018

www.timcoinstruments.com





DEWALT® Unveils 20V MAX* with FLEXVOLT ADVANTAGE™ Technology Take Advantage Of More Power

DEWALT introduces 20V MAX* with FLEXVOLT ADVANTAGE™ Technology built into four new 20V MAX* Brushless Tools, including a 7-1/4-In. Circular Saw (DCS573B), 1/2-In. Hammer Drill/Driver (DCD999B), Reciprocating Saw (DCS386B), and 4-1/2-In.-5-In. Cordless Grinder (DCG416B).

DEWALT FLEXVOLT® Batteries have the ability to provide a new threshold of power and performance by leveraging DEWALT 20V MAX* with FLEXVOLT ADVANTAGE™ tools, in order to reach their full potential. These tools, equipped with the FLEXVOLT ADVANTAGE™ technology, recognize the battery attached and adjust power output accordingly.

DEWALT 20V MAX* with FLEXVOLT ADVANTAGE™ technology provides end-users with more power when paired with the FLEX-

VOLT® batteries, making these tools ideal for demanding applications. Continuing to support the evolution and expansion of the cordless jobsite, which now includes more than 200 DEWALT 20V MAX* products, the new tools feature updated software and brushless motors for enhanced performance. Upgrades specific to each new tool, paired with FLEXVOLT® batteries, are as follows:

Available in October, each tool will come standard with a three-year limited warranty, one-year free service contract, and a 90-day money back guarantee. Individual MSRP information is noted below.

**For more information, visit
www.DEWALT.com**

DON'T MISS OUT!

Does your product help to increase profits or improve safety and overall working conditions for the electrical contractor? If so, don't forget to submit your product for nomination as one of *Electrical Products & Solutions'*

"TOP PRODUCTS OF 2020".

All the winners will be featured in our December issue.

Deadline: December 9, 2020

Requirements:

Submit a high resolution photo (300 dpi) of your product, along with a brief description (up to 150 words). *Please note on your submission that it is for consideration for Top Products.*

E-mail: danny@epsmag.net

or mail to: Electrical Products & Solutions

2009 Eagle Ridge Drive, Birmingham, AL 35242





You've added
to your tool belt

So Have We

Now stocking plastic panels,
ready to ship fast with our
easy to install and adjust
cable suspension systems.



866-636-2981
www.griplocksistemas.com



Evluma's Build-Your-Own Acorn is an Affordable Answer to Decorative Streetlight LED Upgrades

Giving customers control over the creation of their own custom decorative 'full-head' fixture replacement, Evluma announces the release of Build-Your-Own Acorn.

Street and area light manufacturer Evluma announces the release of Build-Your-Own Acorn; a full-fixture, decorative streetlight replacement solution that includes the customer's choice of acorn globe, finial and capital fitter. This solution is designed for utilities, municipalities, facilities and property managers looking to upgrade their existing decorative lighting from HID to LED and features the OmniMax™ LED lamp as its light source.

"Build-Your-Own-Acorn is a tailored solution that puts control in the hands of the customer," said Evluma Product Manager Jason Dobbs. "With the value-driven OmniMax at the center of quality, cost-effective options, this is an affordable approach to complete head replacements. Build-Your-Own-Acorn offers the freedom to replace and repair fixtures without being locked into a proprietary OEM solution that may be hard to change later and typically costs more. It's everything but the pole."

Build-Your-Own Acorn includes multiple styles of acrylic and polycarbonate globes, in addition to a cast aluminum capital fitter. The capital fits 3 inch and 4 inch poles and is offered in black or green. The 70W OmniMax LED lamp is offered in six different color temperatures ranging from 2000K-5000K in either the Premium or Standard. OmniMax Premium includes Evluma's patented, maintenance-saving Photocontrol Failsafe™ and compatibility with Evluma's Bluetooth lighting app ConnectLED™. OmniMax Standard ships without connectivity features or Photocontrol Failsafe built-in.

"Photocontrol Failsafe means never having to replace a failed photocontrol ever again," said Janine Soper, Evluma's Regional Sales Manager. "With ConnectLED, the OmniMax Premium can be quickly dimmed or programmed with a dimming schedule, offering additional aesthetic and energy saving opportunities," said Janine.

Both OmniMax models are supported by robust 20kV/10kA surge protection and the OmniMax's four layers of thermal management for extended operation in enclosed environments. The capital has a 5 year warranty on the finish. Acrylic globes are warranted for 5 years against yellowing. The OmniMax and all electronics, including the capital's optional photocontrol are warranted for 10 years.

**For more information, visit
www.evluma.com**

MENNEKES CDS Series is the Industry's First Non-Metallic, Curved-Top Motor Disconnect Switch

MENNEKES, a global provider of electrical products and services, has recently released its new CDS Series of non-metallic, curved-top motor disconnect switches. The clean, innovative design features a curved profile to eliminate standing water and minimize contaminant buildup in food processing and other cleanroom operating environments.

In addition to its curved profile, the CDS Series features a chemically resistant thermoplastic enclosure with UL Type 4X and IP69K ratings, making it resistant to frequent high-pressure washdown. Its highly visible handle is lockout-tagout (LO/TO) compliant, while its 30A 25HP rating can satisfy most line disconnect requirements. The CDS Series is NSF-certified for food processing areas.

Other notable features and benefits include:

- Laser marking for permanent identification—no labels
- Captive stainless-steel cover screws
- Poured-in-place seamless gasket
- Standard early-break auxiliary contacts—1 N/O, 1 N/C
- "Suitable as Motor Disconnect" per NEC 430-109(a)(6)
- 65,000 SCCR rating with Class J Fuse
- Impact modified and UV stabilized materials

For applications not requiring a curved design, MENNEKES' new DS Series incorporates many of the same features as the CDS Series, but its flat roof allows for top and bottom conduit. Both series feature two mounting systems: internal sealed caps to the current MENNEKES footprint, as well as external feet that are compatible with HBLDS3 and HBLDS3AC.

The new CDS and DS Series are part of MENNEKES' larger offering of motor disconnect switches, which provide plant personnel with a reliable and safe means to service power in a harsh operating environment.



**For more information, visit
www.mennekes.com**

Recharge Faster and Power Simultaneously with the M18™ TOP-OFF™ 175W Power Supply



Milwaukee Tool is proud to unveil the newest way to recharge or power devices on the jobsite — the M18™ TOP-OFF™ 175W Power Supply. Once attached to any M18™ battery, this power supply delivers faster simultaneous power to personal devices and small electronics. Through its integrated (1) AC 120V outlet, (1) USB-C Power Delivery (PD) port, and (1) USB-A port, users can quickly charge up to three devices at the same time without the barriers of speed throttling. Milwaukee® is the first to incorporate USB-C Power Delivery charging technology on a power tool battery platform.

USB-C PD is an industry-leading technology, common in smart devices, that minimizes downtime by charging devices faster than traditional chargers on the market.* With its USB-C PD port (45W), this power supply is capable of recharging devices from a fully depleted state to 80% capacity faster; up to 75% faster than conventional 5W wall chargers that come stock with most devices. As an example, users can charge a smart phone from 0-50% in roughly 30 minutes.

Additionally, unlike most multi-port power supplies, every port on the M18™ TOP-OFF™ maintains full power even when all are in use. For example, a user can power their laptop while charging their phone and tablet — all at full speed.

The power supply also comes with an attached metal rafter hook that can be extended to hang from carts, lumber, or other jobsite materials when work surface space is limited. Users can instantly set up a mo-

bile workstation or keep electronics securely within eyeshot, rather than making frequent trips to a wall outlet.

Milwaukee is committed to improving productivity by providing performance-driven and trade-focused solutions so users can perform an entire day's work on one battery system. The new M18™ TOP-OFF™ 175W Power Supply is fully compatible with the

entire M18™ line, now offering more than 200 power tool solutions.

*To take advantage of this faster charging, users simply need to purchase a USB-C compatible charging cord compatible with their device.

For more information, visit www.milwaukeetool.com



Topaz's Snap Lock Connector Providing Emotional Guidance

IT'S NOT ALWAYS YOUR MOTHER'S FAULT

Topaz's Friendly Tip #19

Topaz is not only the easiest company to do business with, but the friendliest too. Our dedicated sales and customer service teams are always on stand-by to offer friendly tips and guidance to your **lighting and electrical fitting needs**.

Technical or installation questions? Need help getting in touch with your inner child? Give us a call at 888-996-8858 or shoot us an email at friendlytip@topaz-usa.com. Someone will answer, we promise.



TOPAZ

and friendliest
The easiest company to do business with
www.topaz-usa.com



Oracle Lighting Launches Three New Vehicle/Room COVID-19 Neutralizing UV Light Devices

Designed for Both Commercial and Consumer Use, the Mini Sterilization Lamp, Room Sterilization Lamp, & Telescoping Mobile Room Disinfection Device Join the New A.I.R. Solo™ Personal UV Irradiation Face Mask in Oracle's Lineup Virus Disinfecting Devices

Oracle Lighting, an innovator in LED lighting solutions, is proud to introduce three new COVID-19-killing Ultraviolet Light sterilization devices. Now available, the Mini Sterilization Lamp, Room Sterilization Lamp, and Telescoping Mobile Room Disinfection Device join Oracle Lighting's popular A.I.R. Solo™ Personal UV Irradiation Face Mask in the company's lineup of germ-fighting products.

"With over a decade of experience working with UV lighting applications, the Oracle Lighting team was ready to develop effective sanitizing solutions as soon as this global virus emerged," explained Justin Hartenstein, Oracle Lighting director of product development. "The quality of the air we breathe and the cleanliness of surfaces we contact are important factors that impact our overall health and well-being. Today, more than ever, we need to be mindful of contaminated surfaces we interact with every day. Our new UVC devices neutralize pathogens, harmful bacteria, and coronavirus (including COVID-19) without the use of toxic chemicals."

The UVC Room Sterilization Lamp (p/n 38W-UV-C) is tested and proven to properly disinfect and inactivate 99.99 percent of bacteria and viruses. Common workspaces such as offices, waiting rooms, and communal areas can benefit from the same UV-C technology that has been used in hospitals and labs for cleaning and disinfecting rooms for years.

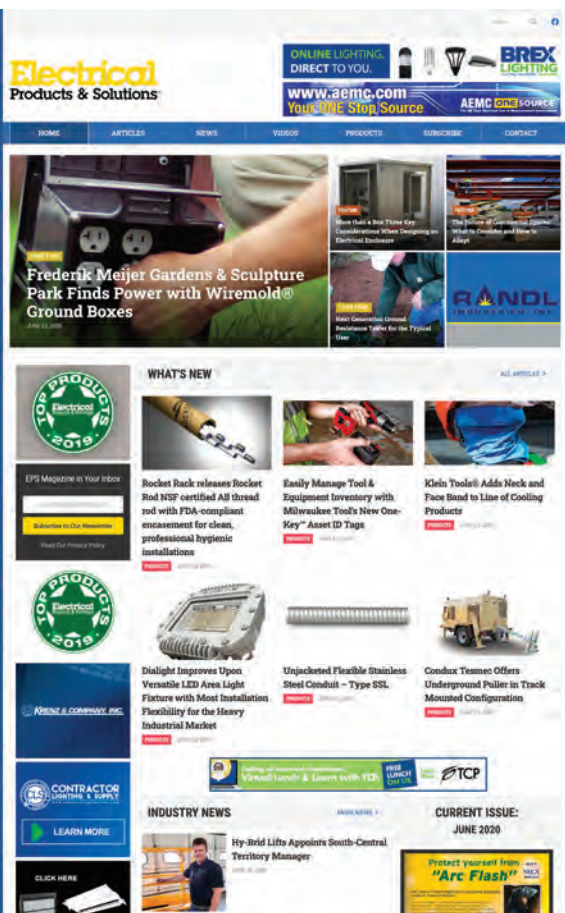


**For more information, visit
www.oraclelights.com**

**Be sure to visit our
newly redesigned
website!**

**It's loaded with articles,
industry news and new
products from each
issue of EPS.**

Electrical
Products & Solutions™
The Purchasing Guide for Electrical Contractors
www.epsmag.net



**Without Tenmat Cover****With Tenmat Cover**

New Retrofit Solution to Fire Rate Low-Profile LED Recessed Lights

Tenmat Announces the Only Foldable Fire Rated Enclosure for Modern LED Downlights

With the introduction of two new products, FF109-250 and FF109-200, Delaware-based Tenmat now offers the first flexible, fire rated barriers for modern, low-profile recessed light fixtures.

Both models are fire tested and approved by ETL-Intertek for use in 1 hour fire resistance-rated ceilings, providing a 60 minute firestopping barrier to protect ceiling openings for recessed light fixtures from flames, smoke and heat as required by the building code.

The cone-shaped covers can be installed in seconds without the need of any special tools, or additional foams or sealants. The ultra flexible nature of the material allows the cover to get rolled up for easy retrofit, remodel or new construction installation from below the ceiling.

The unique design gives the architect, specifier and installer more freedom in fixture selection as the covers are suitable for most low profile LED lights, ultra-thin wafer LED recessed lights, LED recessed retrofit downlights, LED recessed ceiling light and recessed spotlight remodel kits installed in floor/ceiling or roof/ceiling assemblies (attic spaces).

In addition to their fire stopping function, Tenmat covers also exhibit excellent acoustic insulating properties, reducing the noise transmission to and from the living area.

The covers come ready-to-use and do not require any assembly, making them a smart and affordable solution for contractors to meet the building code. Once in place the covers do not require any additional maintenance and are unaffected by moisture.

Tenmat Recessed Light Covers are used in thousands of applications throughout the entire United States and Canada; from small apartments, over single-family homes to multi-family dwellings, college dormitories, hospitals, assisted-living facilities, hotels and office buildings. To learn more about the new Fire Rated Low-Profile LED Downlight Covers and Tenmat's other innovative products please visit our website at www.tenmatusa.com. □

This advertiser index is compiled as a courtesy to our readers. While every effort is made to provide a complete and accurate listing of companies and page numbers, the publisher is not responsible for errors.

Company	PG#	Company	PG#
AEMC INSTRUMENTS	13, IBC	MEGGER	11
BRANDON INDUSTRIES	3	MILLER SAFETY CONSULTANTS, LTD	7
BREX LIGHTING	1	MOBILE DESK	14
CONDUIT REPAIR SYSTEMS	19	RANDL INDUSTRIES	15
EVLUMA	IFC	SP PRODUCTS INC	BC
GENERATOR INTERLOCK TECHNOLOGIES	5	TCP	17
GRIPLOCK SYSTEMS, LLC	27	TENMAT INC	23
KOLBI PIPE MARKER COMPANY	32	TIMCO INSTRUMENTS, LLC	25
KRALOY FITTINGS	12	TOPAZ	29
KRENZ & COMPANY	32	UNDERGROUND DEVICES	21

Since 1970...

KOLBI

Pipe Marker Co.
www.kolbipipemarkers.com

20% OFF
Mention this Ad

**Voltage Markers • Wrap Arounds
Engraved Nameplates
Arc Flash Labels • Conduit Labels**



Speak to our sales team!
Phone: 800-499-8450
E-mail: sales@kolbipipemarkers.com


"KEEP IT SIMPLE WITH KOLBI"

Made in the USA

When it comes to transformer cooling fans, Krenz-Vent is the industry recognized gold standard. Our leadership position is earned through 80+ years of R&D plus our superior engineering and customer service. You can rest easy when you specify Krenz fans.

ENGINEERED TO COOL

There is no comparison.



KRENZ & COMPANY, INC.

KRENZVENT.COM • 262.255.2310 • KRENZ@KRENZVENT.COM

The *Best* Instruments for Your Power Quality and Energy Measurements

Dependable Analyzers, Meters and Data Loggers



Trms



Portable Instruments for a Wide Range of Indoor and Outdoor Applications

- Data logging
- Inrush current analysis
- Harmonic detection analysis
- Transient detection and analysis
- Power factor analysis and correction
- Voltage current and power monitoring
- Energy cost analysis and management
- Power demand and consumption monitoring
- ...and more!

www.aemc.com
sales@aemc.com

 **AEMC**[®]
INSTRUMENTS
CHAUVIN ARNOUX GROUP

SP PRODUCTS, INC.

Productivity and value thru ideas

Proud to be the Electricians' Friend for Over 50 Years!

IP26 Flat "Big O"

Box Support Plate



PATENT PENDING



SAVES OVER 1 HOUR PER INSTALLATION

Prefabricated Assemblies

SAVE More Than \$15.00 per Wall Outlet

PFA3



IP11

Trapeze Brackets

Original EZUTB - Size 1/2" thru 1 1/4" Conduit or equal size MC Cable.

SAVE OVER 20 MINUTES PER FOOT

TRAPEZE Eliminates ALL Conduit Clamps!

NECA SHOW STOPPER 1997



IP28a 2 Box Flat Fixed Position

PATENTED

Strong 16 Gauge Galvanized Steel



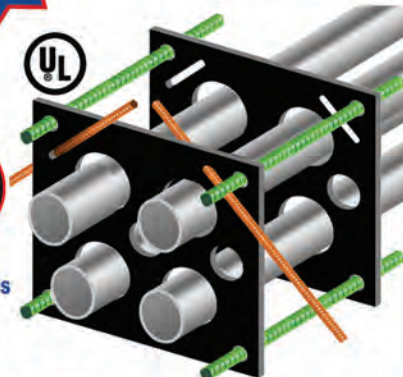
Mount Boxes on Both Sides or Between Studs

IP1 QwikDuct HDPE CUSTOM TEMPLATES

LOWER CONDUIT FROM ABOVE
NO WORKERS BELOW PREVENTS INJURIES OR DEATHS
4,000 PSI TENSILE STRENGTH AT BREAK
OVER 12X FASTER THAN SPACERS & CHAIRS

PATENT PENDING

NECA SHOW STOPPER 2000



Conduit & Box Support Plates



PATENT PENDING

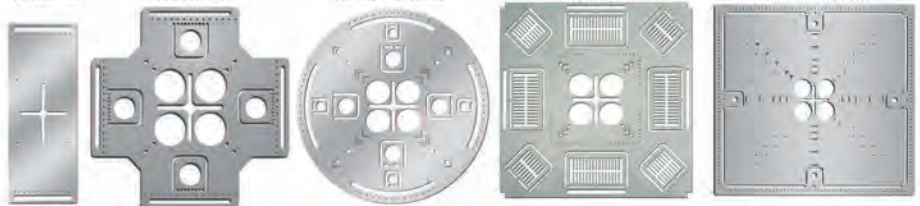
IP5 PATENTED

* IP6 PATENTED

* IP6c PATENT PENDING

* IP7 PATENTED

IP8 PATENT PENDING



Support From Only ONE Rod Plus Eliminates Conduit Clamps
Save More Than One Hour per Installation! *

IP13a-13h

Transition Couplings



Sizes 1/2" thru 6" Schedule 40/80 Conduit

IP15 1 Piece Reaming Bit

PATENT PENDING

1/2" thru 6"

High Speed Steel for Long Life.

IP19 4-Conduit Block

PATENTED

Support up thru 4 conduits From ONLY 1 ROD!

SAVE OVER 30 MINUTES PER INSTALLATION



IP21a QwikBlock Box Support

PATENT PENDING

NEW

Accepts Both 1/4" & 3/8" Threaded Rod



Installation in Less Than 5 Minutes

- Use For Entire Job -
Not Just for Repair!

NEW

Snap-ON Adjustable Back Box Support

IP18a PATENT PENDING



IP3a End Bell Adapter



Smooth Edges Allow Trouble Free Wire Pulls.
PVC Schedule 40 & 80
Sizes 1/2" thru 6"

PATENT PENDING

IP3b PVC Offset

1/2" thru 6" Conduit
1/2" thru 2" Offset

PATENT PENDING



Plus More That Do Jobs **SAFER BETTER FASTER** Constantly Being Invented!

SPProducts.com 800-233-8595 info@SPProducts.com

