

TRIDONIC: DYNAMIC FACADE LIGHTING FOR HOTEL LIMA MARBELLA

February 2021

Electrical

Products & Solutions™

The Purchasing Guide for Electrical Contractors

www.epsmag.net

**G.A. Braun
Saves Nearly
\$60K a Year
with Dialight
Industrial LED
Lighting**

NEW Hand-held Megohmmeter/Multimeter

MODELS 6528 & 6529

*Economical and easy-to-use
True Megohmmeter®
built safe and rugged for
use in the field*

*Diagnosing the condition
has never been simpler*

- Test voltage selection from 50 to 1000V (model dependent)
- Basic DMM functions; Volts, Continuity, and Resistance
- Dual line display to view the insulation value and real-time test voltage simultaneously in an easy-to-read format
- DMR mode - relative resistance comparison to a reference value
- 2-color backlighting easily shows alarm conditions
- Shockproof cover for excellent handling
- Programmable alarm thresholds



6528



6529



(800) 343-1391

www.aemc.com | sales@aemc.com



AEMC®
INSTRUMENTS

CHAUVIN ARNOUX GROUP

BREX LIGHTING

LIGHTING SOLUTIONS. SIMPLIFIED

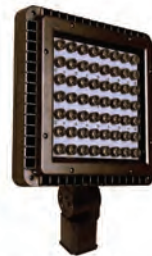
ONLINE LIGHTING. DIRECT TO YOU.



BOLLARDS



LED BULBS



LED FLOODLIGHTS



AREA LIGHTS



POST TOPS



WALL PACKS

CONTACT US FOR DISTRIBUTOR
& CONTRACTOR PRICING



877-273-9533
Sales@BREXlighting.com

1601 Wilmeth Road
McKinney, Texas 75069

BREXlighting.com

PUBLISHER

Danny J. Salchert

OFFICE MANAGER

Anita Salchert

CREATIVE DIRECTOR

Derek Gaylard

CIRCULATION DIRECTOR

Pam Fulmer

CONTRIBUTING WRITER

Chris Capozzoli



PRESIDENT

Danny J. Salchert

EXECUTIVE AND ADVERTISING OFFICES

2009 Eagle Ridge Drive
Birmingham, AL 35242

phone: 205.981.4541

fax: 205.981.4544

www.epsmag.net

danny@epsmag.net

Electrical Products & Solutions™ is published twelve times a year on a monthly basis by ABD Communications, Inc., 3591 Cahaba Beach Road, Birmingham, Alabama, 35242, USA. *Electrical Products & Solutions™* is distributed free to qualified subscribers. Non-qualified subscription rates are \$57.00 per year in the U.S. and Canada and \$84.00 per year for foreign subscribers (surface mail). U.S. Postage paid at Birmingham, Alabama and additional mailing offices.

Electrical Products & Solutions™ is distributed to qualified readers in the electrical contracting industry. Publisher is not liable for all content (including editorial and illustrations provided by advertisers) of advertisements published and does not accept responsibility for any claims made against the publisher. It is the advertiser's or agency's responsibility to obtain appropriate releases on any item or individuals pictured in an advertisement. Reproduction of this magazine in whole or in part is prohibited without prior written permission from the publisher.

POSTMASTER: Send address changes to ABD Communications, Inc., P.O. Box 382885 Birmingham, Alabama 35238-2885

PRINTED IN THE USA

COMPANY PROFILE

4 Generator InterLock Technologies, LLC

6 PROTECT YOURSELF MILLER SAFETY CONSULTANTS *A LEADER IN ARC FLASH PROTECTION*

COVER STORY

8 G.A. Braun Saves Nearly \$60K a Year with Dialight Industrial LED Lighting

BY CHRIS CAPOZZOLI

FEATURE

16 Dynamic Facade Lighting for Hotel Lima Marbella *Wireless technology from Tridonic for the four-star hotel*

DEPARTMENTS

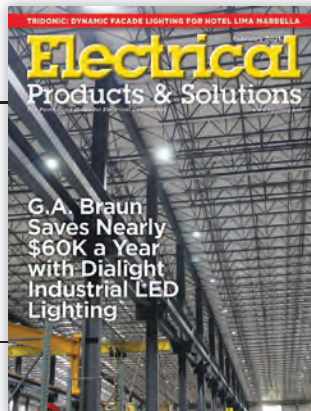
22 INDUSTRY NEWS

26 NEW PRODUCTS

32 AD INDEX

ON THE COVER

Image courtesy of Dialight Industrial LED Lighting





Brandon Industries® Offers an Extensive Lineup of High Value, Decorative Lighting Solutions For Your Next Project!

LED Post Tops • Base and Poles • Globes • Bollards • Complete Lighting Units

Your neighborhood or downtown district deserves defined character – our distinct and made to last pedestrian scaled lighting solutions deliver an experience beyond your expectations.



LED Lighting | Decorative Signage | CBU's & Mailboxes | Site Furnishings

800-247-1274

BrandonIndustries.com

Generator InterLock Technologies, LLC

Generator InterLock Technologies, LLC, is a small-based company that manufactures and sells its products across the country. The company was founded after Hurricane Isabel hit the east coast in 2003. The product was developed to meet the need for a safe way to use portable generators to power homes in the event of power loss.

The initial inspiration for the product came from a persistent friend of an electrician working for Master Electrical Services. As electrical contractors, they had seen various unsafe and illegal methods that people had used to try to power their houses with their portable generators. The electrician set out to develop a product that would meet National Electrical Code requirements and at the same time be cost effective and convenient for the homeowner. From that original inspiration came a new company: Generator Interlock Technologies or GIT.

The Interlock Kit is a simple safety product that locks out the Main breaker in the existing home panel and allows for the portable generator to power the home through a back feed generator breaker. While many electrical inspectors liked the product; they all agreed that the product would have to be listed to UL standards. After thousands of dollars in fees, rigorous tests, a year of changes and modifications, the Interlock Kit was finally approved for production to be used with panels listed under UL Standard 67.

The company started filling orders in early 2005, using Master Electrical Services as its basis for customer awareness.

Starting with a few kits that fit the most recent Square-D and Cutler Hammer panels, the offerings grew to over 30 different models in less than one year. Generator Interlock Technologies now has kits for panels from 30 years ago to the most current and they continue to add new kits to meet their customer's needs. While contractors in Florida and the North East are the biggest customers, Interlock Kits have been sent throughout the United States and parts of Canada. Whether the power loss is due to coastal hurricanes or from crippling ice storms in the northern , GIT has a kit that will allow customers to keep the power on in their homes.

The Interlock Kits are designed to be installed by licensed electricians and are cost effective for both the customer and the installer. Other products on the market such as generator sub-panels and transfer switches require extensive rewiring of the home panel, often taking the electrical contractor 6 to 8 hours to install. With the Interlock Kit, a qualified electrician can install a complete system in 2 hours or less by simply mounting the correct kit to the face of the panel and wiring a gen-



erator convenience outlet to a breaker installed in the panel.

To use their portable generator, a homeowner plugs an extension cord from their generator to the new generator convenience outlet. He then starts the generator, turns off the main breaker, slides the Interlock Kit, turns on the generator breaker and selects the circuits for use up to the capacity of the generator.

Generator Interlock Technologies' Kit is a defining safety product that has been recognized as a Innovation Award Winner by *Electrical Contracting Products* magazine and one of the Top Products by *Electrical Products and Solutions* magazine.

Generator Interlock Technologies, LLC, has taken a problem of safety and convenience and developed a system to keep danger and expenses to a minimum. Starting with an idea of helping a friend in need, to helping thousands across the country, GIT continues to grow due to its commitment to deliver a quality product. Visit www.interlockkit.com for a complete list of products and details. □

With the Interlock Kit, a qualified electrician can install a complete system in 2 hours or less by simply mounting the correct kit to the face of the panel and wiring a generator convenience outlet to a breaker installed in the panel.

INTERLOCKKIT

A Generator InterLock Technologies Product



Generator InterLock Technologies

**Quickly & Safely Connect
Portable and Standby Generators to
Home Panels with the INTERLOCKKIT**

Advantages over existing options include:

- Quick installation that provides the contractor and consumer with less cost.
- Our kits allow you to safely and legally use generators to feed the existing panel, permitting quick and convenient use of all original circuits.
- InterLock Kits retrofit to any existing panel and require no additional wall space.
- Tested for use with UL 67 Listed Panelboards
Ref. Wyle Laboratories Test Report T52431-01
- Same day shipping available on all models.

**Quick installations make you more money.
Do yourself and your company a favor and
learn more about the InterLock Kit today!**



**To order or learn more about the INTERLOCKKIT
visit us at www.interlockkit.com or call 804-726-2448**

Protect Yourself

Miller Safety Consultants — *A Leader in Arc Flash Protection*

Vince Miller started Miller Safety Consultants, a veteran owned business in 1999. The goal of the business was to provide cost effective safety consulting, employee training such as: confined space entry, fall protection, electrical safety and provide sales of electrical shock and flash protective equipment and fall protection equipment to businesses in the Washington DC area.

Reliance Industries provided fall protection products and much of the sales and training was on behalf of the supplier. In 2000, the owner decided to retire from his business, and Vince decided to discontinue the fall protection line of his business and concentrate more in the electrical training and products.

Vince had been a distributor for Certified Insulated Products (CIP), a manufacturer of electrical insulated tools and electrical arc flash clothing manufactured by Otex in Rochester, New York. As a distributor, Vince provided sales through his internet website and much through relationships with electrical contractors. His training was a classroom environment and was provided directly to customers but he also taught as a sub-contractor for other safety consulting companies and the

Chesapeake Safety Council in Baltimore, Maryland. In 2005, Vince partnered with Vivid Learning Systems in Cascades, Washington to provide on-line training in safe work practices.

Training in electrical safe work practices is still provided locally in the Washington DC area and as a partner with an electrical engineering firm and online. The training is based on the Occupational Health and Safety Administration (OSHA) standards and the National Fire Protection Association (NFPA) 70E standard.

Miller Safety Consultants is now a distributor for Cementex USA, Burlington, New Jersey, for insulated tools and equipment and clothing from OTEX Protective, Rochester, New York.

The majority of his sales of products are from the web-based store. Cementex is

nationally known for their quality equipment. Otex Protective is becoming more known for their quality clothing. For years, they have manufactured their products under other provider labels. Vince chose to not create his clothing line, but to sell the manufacturer product.

Vince has worked with many electrical company employees to fine-tune the clothing to be more comfortable for the user. Working closely with the manufacturer, they have made slight changes in how the cloth pattern was modified to meet final production. An example is the lightweight 40 Calorie vented hood offered by Otex.

The material is of the latest technology. The vented assembly is constructed for balance on the back of the hardhat and the airflow is 27 CFM to prevent fogging of the face shield and provide cooling to the worker. It took over a year to develop the product with the user prior to having the hood "flash tested". This product is now standard issue with many electrical contractors.

Being a small business and having quality providers has resulted in satisfied customers for Miller Safety Consultants. Being a direct supplier for OTEX Protective, another small business means customized customer needs can be met. □

*For more information, visit
Miller Safety Consultants at:
www.electricalsafetysupply.com, email
Vince at: sales@millersafetyltd.com
or give him a call at (703)367-0404.*



The V5™ 40 Cal Ultralight Lift Front Hood System

1. V5™ High-Volume Ventilator with ArcSense Interrupter™
 - Patent-Pending ArcSense Interrupter™ shuts off airflow after an arc flash, preventing further inhalation of manganese fumes
 - 27 CFM blower fans
 - Snap-in design, removable in seconds
2. Milwaukee M12 rechargeable battery and receiver
3. 1:1 Balance: Perfectly balanced back-to-front
4. Paulson face shields and brackets
5. Hood Handle for easy removal or transport
6. LED Head Lamp included

ULTRALIGHT Premium

Protect yourself from "Arc Flash"

ARC FLASH LIFT-FRONT HOOD WITH V¹² HIGH-VOLUME VENTILATOR Compact. Powerful. Reliable

Our V¹² High-Volume Ventilator boasts an unexpectedly quiet, high output (35+ CFM) turbine fan to cool and circulate the ambient air within the hood. Fully protected beneath it's durable ABS shell and added fabric layering, the V¹² High-Volume Ventilator isn't just compliant, it's superior.



40 CAL/CM2 ULTRALIGHT CLOTHING BY OTEX

Our new dual-layer Ultralight clothing takes advantage of DuPont's® dedication to scientific advancement and Westex's® industry leading dependability. Weighing in 37% lighter than traditional HRC4 PPE, our Ultralight Clothing is the most innovative contender in the lightweight arena.

HYBRID LAYERING

Combined Fabric Weight: 14 oz

Outer Layer: DuPont® Protera
Color: Navy

Inner Layer: Westex Ultrasoft
Color: Safety Orange



CALL US TODAY

(703) 367-0404

OR VISIT OUR ONLINE ELECTRICAL SAFETY EQUIPMENT STORE
www.electricalsafetysupply.com

G.A. Braun Saves Nearly \$60K a Year with Dialight Industrial LED Lighting

BY CHRIS CAPOZZOLI, DIALIGHT PRODUCT MANAGER

G.A. BRAUN IS A GLOBAL LEADER in the design and manufacturing of commercial laundry and textile equipment. Over the past 75 years, the company has built a global reputation for innovation, quality construction and customer satisfaction.

(CONTINUED ON PAGE 10)





To meet growing demand for its state-of-the-art systems, the company recently added a massive, 100,000 square foot expansion to its existing North Syracuse, NY facility, adding much-needed fabrication and assembly space. When it came to choosing lighting for the facility, David Welsh, director of operations, says the company had some stringent requirements.

Solving “A Maintenance Nightmare”

“We’d just switched our existing facility over to T5 fluorescents about 4 years earlier but that was already becoming a problem,” Welsh said. “The T5s were a maintenance nightmare. The bulbs dimmed after the first year, and they were so cheaply made the bulbs would

sometimes actually fall right out of the fixture.”

Unfortunately, the T5s weren’t cheap to maintain. With six bulbs per fixture, plus two starters, the systems were very expensive to replace and repair. Braun was spending about \$6,800 a year to change out T5 bulbs, not to mention the storage and disposal of the tubes was also an issue.

As the bulbs dimmed and failed, visibility inside the facility dwindled quickly, which created a quality assurance problem. “It was so dark in the old facility, we risked having a lot of defects going out in the field,” Welsh said. “We needed good lighting for our assemblers to be able to inspect the paint and assembly on our products in order to maintain our high standards.”

“With the new building, we were determined to find a better lighting solution,” he added.

New Building Calls for New Technology

As the addition neared completion, Braun installed 9 LED fixtures from 4 different suppliers throughout the facility to test their output and durability, including Dialight’s 18K Vigilant High Bay fixtures.

“With the Dialight fixtures, the distribution of the light was just so much better and produced the least amount of shadows of any of the manufacturers,” Welsh said. “Plus, no one could beat the Dialight 10-year warranty; most were just 7 years.”

In fact, Welsh says Braun was so impressed with the output, distribution and reliability of the Dialight fixtures, they decided to also replace the T5s in the original building.

Dialight Delivers Big Savings, Better Quality & Proven Reliability

Taking advantage of a \$60,000 rebate from NYSEDA for the retrofit project and a \$70,000 rebate from National Grid for the new construction, Braun installed 320 retrofit and 276 new construction fixtures, for a total of 596 Dialight 18K Vigilant industrial LED high bays. In the new facility, Braun opted to add Dialight’s wireless network controls to operate the lights (CONTINUED ON PAGE 12)



**New Mogul Conduit Body,
Showing Everyone Who’s Boss**

NO PAIN, NO GAIN

Topaz’s Friendly Tip #5

Topaz is not only the easiest company to do business with, but the friendliest too. Our dedicated sales and customer service teams are always on stand-by to offer friendly tips and strong support to your lighting and electrical fitting needs.

Technical or installation questions? Need help quitting the cookies and ice-cream? Give us a call at 888-996-8858 or shoot us an email at friendlytip@topaz-usa.com. Someone will answer, we promise.



and friendliest
The easiest company to do business with
www.topaz-usa.com

SP PRODUCTS, INC.

Productivity and value thru ideas

Proud to be the Electricians' Friend for Over 50 Years!



IP26 Flat "Big O"

Box Support Plate



PATENT PENDING



SAVES OVER 1 HOUR PER INSTALLATION

Prefabricated Assemblies

SAVE More Than \$15.00 per Wall Outlet

PFA3



IP11

Trapeze Brackets

Original EZUTB - Size 1/2" thru 1 1/4" Conduit or equal size MC Cable.

SAVE OVER 20 MINUTES PER FOOT

TRAPEZE Eliminates ALL Conduit Clamps!



PATENTED

NECA SHOW STOPPER 1997

IP28a 2 Box Flat Fixed Position

PATENTED

Strong 16 Gauge Galvanized Steel



Mount Boxes on Both Sides or Between Studs

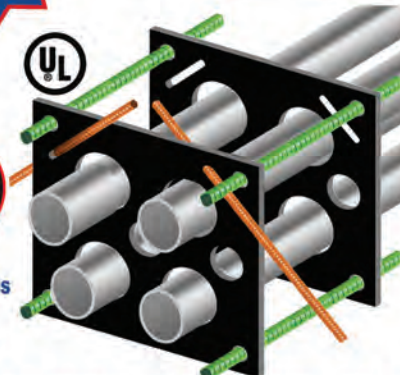
IP1

QwikDuct HDPE CUSTOM TEMPLATES

LOWER CONDUIT FROM ABOVE
NO WORKERS BELOW PREVENTS INJURIES OR DEATHS
4,000 PSI TENSILE STRENGTH AT BREAK
OVER 12X FASTER THAN SPACERS & CHAIRS

PATENT PENDING

NECA SHOW STOPPER 2000



Conduit & Box Support Plates

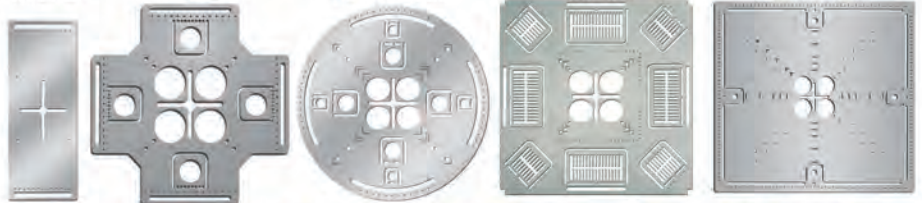
IP5 PATENTED

* IP6 PATENTED

* IP6c PATENT PENDING

* IP7 PATENTED

IP8 PATENT PENDING



Support From Only ONE Rod Plus Eliminates Conduit Clamps
Save More Than One Hour per Installation! *

IP13a-13h

Transition Couplings



Sizes 1/2" thru 6" Schedule 40/80 Conduit

IP15 1 Piece Reaming Bit

PATENT PENDING

1/2" thru 6"

High Speed Steel for Long Life.

IP19 4-Conduit Block

PATENTED

Support up thru 4 conduits From ONLY 1 ROD!

SAVE OVER 30 MINUTES PER INSTALLATION



IP21a QwikBlock Box Support

PATENT PENDING

NEW

Accepts Both 1/4" & 3/8" Threaded Rod



Installation in Less Than 5 Minutes

- Use For Entire Job -
Not Just for Repair!

NEW

Snap-ON Adjustable Back Box Support

IP18a

PATENT PENDING



IP3a End Bell Adapter



Smooth Edges Allow Trouble Free Wire Pulls.
PVC Schedule 40 & 80
Sizes 1/2" thru 6"

PATENT PENDING

IP3b

PVC Offset

1/2" thru 6" Conduit
1/2" thru 2" Offset

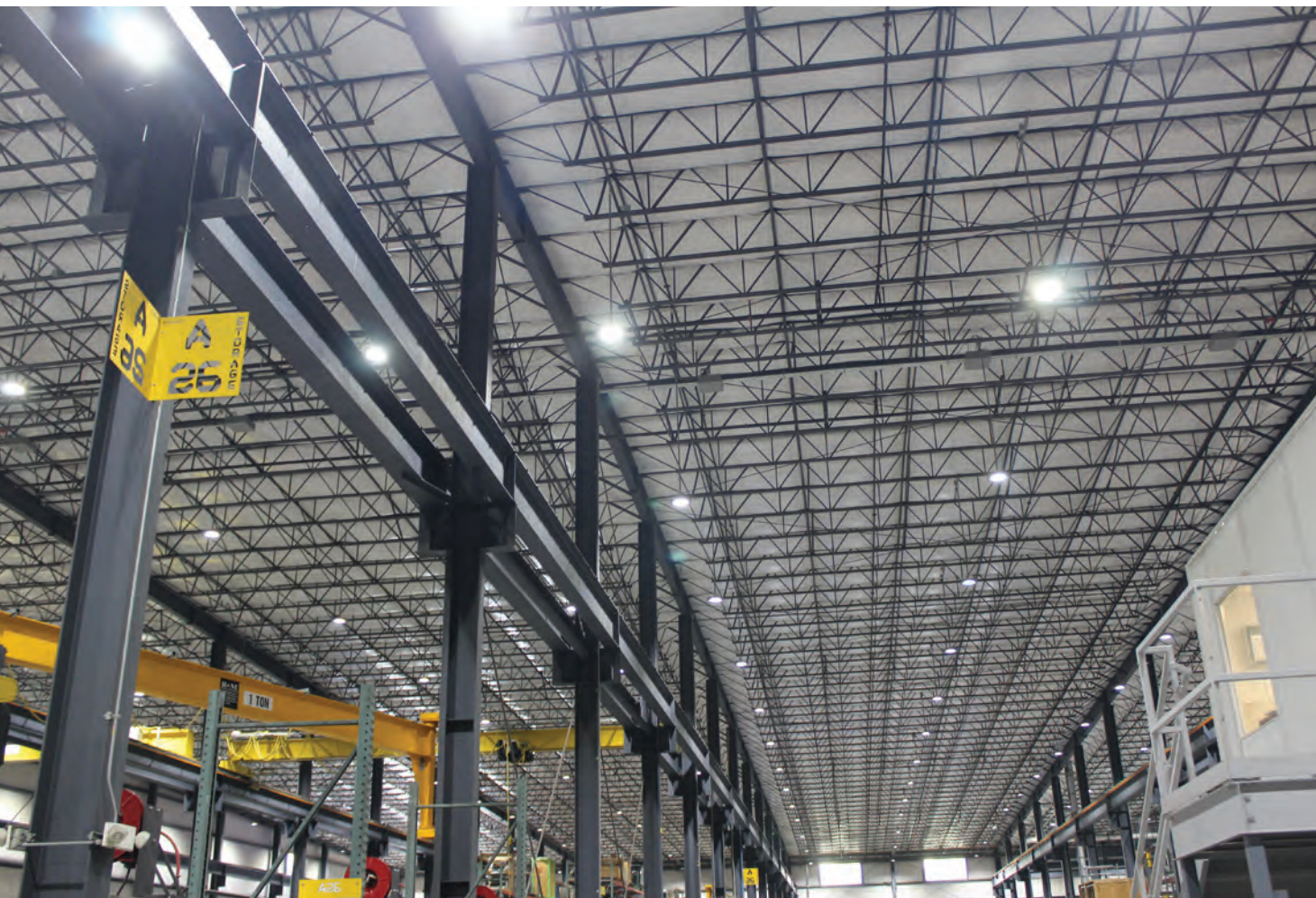
PATENT PENDING



Plus More That Do Jobs **SAFER BETTER FASTER** Constantly Being Invented!

SPProducts.com 800-233-8595 info@SPProducts.com





INSTALLATION SNAPSHOT:

- Commercial laundry and textile equipment manufacturer – North Syracuse, NY
- Hindered by ineffective and cheap T5 fluorescents
- Replaced 320 T5 fluorescents with Vigilant® High Bays
- Installed a total nearly 600 Dialight LED High Bays in existing 155,000 SQ FT and new 100,000 SQ FT facility
- Saved \$6,800 /year on LABOR & MAINTENANCE COSTS
- Saved \$ 51,000/year in ENERGY COSTS
- Redeemed \$130,000 in ENERGY REBATES for installing LEDs

automatically. This way, if someone forgets to turn the lights off at the end of the shift, they're programmed to go off automatically at a designated time, reducing burn time, energy waste and electricity cost.

In addition to enjoying an outstanding quality of light and better visibility, Braun has also realized a substantial savings beyond the utility rebates. The company is saving \$51,000 a year in electricity alone, plus nearly \$7,000 in maintenance costs by eliminating the need to constantly replace the T5 bulbs and fixtures. And, they no longer have to worry about lights randomly falling from the ceiling for an added safety bonus.

Meanwhile, the workers at Braun have been really impressed with the improved lighting, Welsh said. Now, when visitors come in, they all comment on how bright and clean the facility looks, and with much better visibility, Braun can be more

confident in the quality of its products going out the door, all of which reinforces Braun's industry reputation.

"You know, those T5s in the original building were my idea, and they'd only been in place about 4 years. They were the best available at the time," Welsh said. "So, it wasn't an easy sell to convince the owner of the company to rip them all out and replace them with LEDs. But the difference is outstanding, and we've been very pleased with the results."

"I've had nothing but a good experience with the Dialight fixtures and the Dialight team," Welsh says. "For anyone who's facing the same maintenance disaster I was, I recommend upgrading to Dialight's fixtures. You'll be very happy with the results." □

For more information about Dialight's class-leading industrial LED lighting solutions, visit www.Dialight.com.

Monitor Your Indoor Air Quality

High CO₂ Levels are an Indication of Poor Ventilation

A possible risk of infection via aerosols exists predominantly in rooms which are not sufficiently ventilated or no air exchange is possible. AEMC® Model 1510 is the optimal device for permanent monitoring the potential of aerosol concentration in closed rooms through CO₂ measurement.

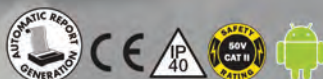
- Audible and visual alert of high CO₂ concentration with a distinctively red backlit display
- Compact and lightweight for stationary and mobile measurements
- Simple-to-use
- Hand-held or wall mountable
- Data logging up to 1 million measurements
- User programmable
- Battery or USB powered
- Analysis/Report generating software included



Air Quality Logger Model 1510

www.aemc.com
sales@aemc.com

AEMC®
INSTRUMENTS
CHAUVIN ARNOUX GROUP



DRIVEN TO DELIVER

THE CONSOLE X



- Clean up those cabs and get your fleet organized!

Your Total Mobile Office Solution

The Truck Console-X combines your Laptop Work Station, Radios, Speakers, Cables, Storage and Cup Holders, No Drill Installation Brackets Included.

The **Truck Console -X** is the latest innovative mobile office solution to join the Mobile Desk brand family of products. This complete control, communication and convenience Utility Truck Console is becoming the new standard for fleets of all sizes. The design of the **Truck Console -X** has originated from our years of experience working directly with the lineman, supervisors, communications, and fleets of some of the most notable utility companies in America. Loaded with standard and optional features that maximize ergonomics, productivity, and fleet/telecom standards into one Mobile Office Solution.

Screen Out™ SCREEN-DISABLER™
Blanks your screen while you drive!

Our Patented Screen Out App **Stops texting** while driving for all employees on all tablets, laptops and smart phones that run Windows, iOS or Android Operating Systems. **It's that easy!**

877-663-3375 Ext 303. www.screenout.net

Find us on:



MOBILEDESK
MOBILE OFFICE SOLUTIONS

1-877-663-3375

www.mobiledesk.com

©2018 Mobiledesk

First there was 4 square...
and now the **REVOLUTIONARY 5 Square® Box!!**

You've struggled with 4 Square boxes for years - you know how small, cramped and time consuming they are. Finally, there is a solution that allows you the space you have always needed.

The **5 Square®** Boxes (5" x 5" x 2-7/8") provide up to 88 in³ of interior volume which more than doubles that of most existing boxes on the market.

Create a robust and unrivaled infrastructure for the life of your facility with the **5 Square®** Products!

Fire Signal



- TWICE THE VOLUME AS MOST BOXES
- SAVE LABOR...INCREASE PROFITS
- ELIMINATES TROUBLESHOOTING TIME AND COST
- FULLY UPGRADEABLE SYSTEM
- SPECIFIED BY ENGINEERING FIRMS, HOSPITALS, UNIVERSITIES & GOVERNMENT AGENCIES
- AVAILABLE IN ZINC OR RED

Telecommunications



- INTEGRAL CABLE MANAGEMENT
- SAVE LABOR...INCREASE PROFITS
- FACILITATES MIN. BEND RADIUS REQUIREMENTS
- SUPPORTS CURRENT AND EVOLVING SYSTEMS
- SUPPORTS PoE PLUS
- SPECIFIED BY ENGINEERING FIRMS, HOSPITALS, UNIVERSITIES & GOVERNMENT AGENCIES



The four-star Hotel Lima in Marbella has been completely renovated and is now equipped with new facade lighting. Thanks to a wireless lighting management system from Tridonic, the outdoor lighting could be expanded without major structural modifications, making this traditional hotel a brilliant showcase in the centre of Marbella.



Dynamic Facade Lighting for Hotel Lima Marbella

Wireless technology from Tridonic for the four-star hotel

THE FACADE LIGHTING for the four-star Hotel Lima Marbella in Spain needed to be upgraded as part of general renovation work.

The project partners looked for a wireless light management system that would add dynamic control and RGBW colors to the existing outdoor lighting without major structural modifications. They found it at lighting control specialist Tridonic. (CONTINUED ON PAGE 18)

Meet your assistant

Designing a school, workspace, store, restaurant, hotel, hospital or a home? Which lighting will best elevate the mood? Sell the product? Lower costs?

TCP offers designers a full range of lighting and services to give your design the impact you desire.

We engineer and manufacture our own lighting. We even create prototypes. TCP understands the power of light to elevate design – **including your next project.**

The future of lighting is LED by TCP.

Make TCP your assistant for every project.

330-995-6111 | TCPi.com



TCP®



Today, Bluetooth-based basicDIM Wireless control technology makes this traditional hotel a brilliant showcase in the centre of Marbella.

From as far back as 1965, Hotel Lima Marbella has been offering its guests first-class service and an ideal base for exploring and relaxing. This four-star hotel is located in the heart of the Spanish coastal city of Marbella, within walking distance of the old town with its narrow streets and trendy boutiques, as well as the beach and the marina.

The main challenge of this project, developed by the Spanish architectural firm of T10, was to completely renovate the existing hotel without increasing the built volume or the height of the original building. To achieve that, a double skin was created to envelop the building, giving the hotel a fresh appearance and emphasizing its outer perimeter with horizontal bands at every level providing balconies for the rooms.

At night, a dynamic lighting system turns the facade into a vibrant design element.

Another addition that has changed the appearance of the hotel is the rooftop bar and pool area with incredible views of the beach and the hills nearby.

In the course of the complete renova-

tion of this popular destination under the auspices of the Spanish architectural firm T10 and the lighting designers of Vbospana, the facade lighting of the six-story building was also to be modernized and equipped with RGBW colors and dynamic lighting control. Since the hotel's fa-



cade was already illuminated with LEDs, the lighting designers were looking for wireless technology that would integrate easily and seamlessly into the existing installation.

“To make the building a real eye-catcher, the new system had to not only provide colored lighting and dynamic color changes but also allow the six floors to be illuminated independently of one another. Different color scenes were also required,” said Marta Jiménez, Area Sales Manager for Andalucía region at Vbo. “What was particularly important to our customers in this project was that the lighting could be reconfigured at any time – even remotely.”

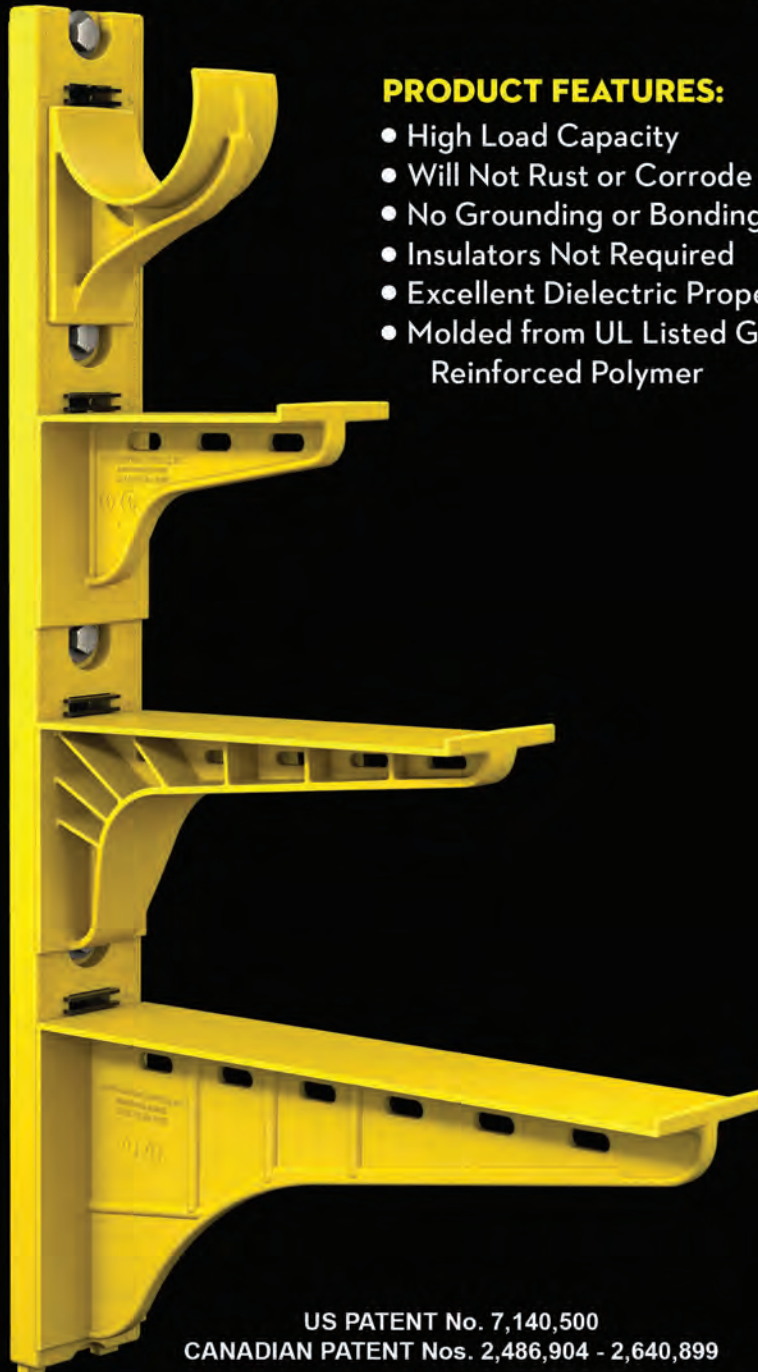
Wireless Lighting Control with Minimal Structural Changes

In view of these specific requirements, the lighting specialists at Vbospana consulted with the clients and opted for the basicDIM Wireless light management system from technology partner Tridonic. Bluetooth-based control technology allows a wide variety of interaction with all the connected luminaires – without the need for additional wiring. The existing outdoor LED luminaires merely had to be equipped with basicDIM wireless modules and corresponding drivers. The system is operated (CONTINUED ON PAGE 20)

The Heavy Duty Nonmetallic CABLE RACK



For Power and Communications Manholes And Vaults



PRODUCT FEATURES:

- High Load Capacity
- Will Not Rust or Corrode
- No Grounding or Bonding
- Insulators Not Required
- Excellent Dielectric Properties
- Molded from UL Listed Glass Reinforced Polymer



HDL Arm Lock shown with
RA04 Arm and CR36-B Stanchion



3HDS - 3" throat saddle shown with
a cable secured by cable ties.



RA08 - 8" arm shown with three
cables secured by cable ties.

US PATENT No. 7,140,500
CANADIAN PATENT Nos. 2,486,904 - 2,640,899

UNDERGROUND DEVICES
INCORPORATED



420 ACADEMY DRIVE
NORTHBROOK, IL 60062
Phone: 847-205-9000 • Fax: 847-205-9004
Website: www.udevices.com



via the 4remote BT app (available for iOS and Android) or the basicDIM Wireless User Interface, a battery-powered wireless wall switch. The wireless modules have gateway functionality so there is no

need for an external gateway.

Up to 250 light points can be controlled via Bluetooth with Casambi-ready basicDIM Wireless technology. The necessary wireless communication network is auto-

matically set up by the wireless modules. Between the end of 2019 and January 2020, 54 basicDIM Wireless modules and 54 constant-current LED drivers from the Tridonic EXCITE series were installed on each of the six stories of Hotel Lima Marbella. Luminaire grouping and configuration of lighting scenes are now just as convenient as on-off switching and dimming. It was also possible to integrate RGBW color control in the system.

Stylish Eye-Catcher on the Costa del Sol

Hotel Lima Marbella reopened in July 2020 with an entirely new look – both inside and out. Guests found a fully renovated hotel with a stylish interior, rooftop pool and modern technology. The designers placed particular emphasis on automation. For guests, the entire process from checking in to opening their room door is contactless via their smartphones.

But the undisputed highlight of this modernized four-star hotel is the dynamic, colored facade lighting which extends over all six stories of the corner building. The basicDIM Wireless lighting can now be easily adjusted and adapted with a high degree of flexibility.

“We are extremely pleased with the results. The facade is the new hallmark. It’s a real eye-catcher,” said Javier Bernal, a member of the T10 team. “We have been particularly impressed by the underlying technology. Tridonic’s system was quickly installed and didn’t require any additional cabling or gateways. The lighting can be changed at any time and the hotel managers can adapt it any way they like.” □

ABOUT TRIDONIC

Tridonic is a world-leading supplier of lighting technology, supporting its customers with intelligent hardware and software and offering the highest level of quality, reliability and energy savings. As a global driver of innovation in the field of lighting-based network technology, Tridonic develops scalable, future-oriented solutions that enable new business models for lighting manufacturers, building managers, systems integrators, planners and many other types of customer.

To promote the vision of the “Internet of Light”, Tridonic relies on partnerships with other specialists. The goal is the joint development of innovative technological solutions that convert lighting systems into intelligent networks and thereby enable associated services. Its profound, technical industry expertise makes Tridonic an ideal partner for established brands and for newcomers to the market.

Tridonic is the technology company of the Zumtobel Group and is headquartered in Dornbirn, Austria. In the 2019/20 fiscal year, Tridonic achieved sales of 341.4 million euros. 1,932 highly skilled employees and a worldwide sales presence in over 60 countries provide the basis for developing and launching new, smart and connected lighting systems.

REPAIR CONDUIT IN A SNAP!

No Tape • No Plastic Straps • No Metallic Straps

NO KIDDING!

*Designed especially for power, communications
and fiber optics.*



STEP 1
Remove damaged
conduit



STEP 2
Cut split duct
conduit to fit



STEP 3
Snap in
place

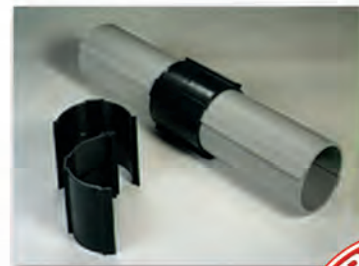
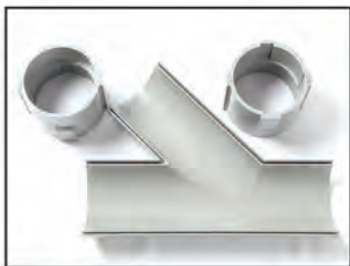
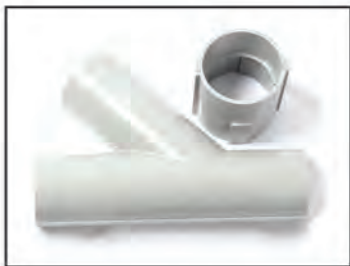


STEP 4
Attach
adapters



STEP 5
Finish job in
record time

"The World Leader In Split Conduit Products"



Conduit Repair Systems, Inc.

The World Leader In Split Conduit Products



800.670.1804 • 435.673.8724 fax • crs@conduitrepair.com • www.conduitrepair.com

Focal Point Introduces 2-Day Lead Time Option with New Quickship Red Program

Quickship program expansion gives customers access to the most popular options for ID+ 3.5" and 4.5" Downlights and Wall Washers in just two business days

With the introduction of Quickship Red, Focal Point is expanding its current Quickship program by offering a short, two-day lead time on up to 200 pieces for downlights and 100 pieces for wall washers. Unlike a stock program, Quickship Red answers the customers' needs for speed and selection by offering a range of options to configure luminaires that ship in two business days. This new capability establishes Focal Point as the fastest manufacturer of commercial architectural grade, made-to-order downlights in today's market.

Quickship is a broad, made-to-order offering of architectural luminaires that support all main areas of a project. Recognizing the need to satisfy tight project schedules without sacrificing quality or selection, Quickship and Quickship Red leverage Focal Point's vertical integration and on-site manufacturing capabilities to ship a wide variety of made-to-order luminaires in 2, 5 and 10 days.

"At Focal Point, we've always prided ourselves on providing our customers with the innovative, high-quality lighting solutions they need when they need them. But today's fast-paced and cost-conscious market has created a demand for even shorter lead times on many orders. That's why we challenged ourselves to significantly reduce our current turnaround for our most popular products – but without impacting the world-class quality and service our customers expect," states John Dellorto, Vice President of Sales. "Quickship Red exemplifies our commitment to bringing it all to light for our customers



– seamlessly combining quality, service and speed to meet the evolving needs of today's market."

The new Quickship Red program includes the most popular options of the company's ID+ 3.5" and 4.5" Downlights and Wall Washers.

As part of its Quickship program, Focal Point offers 5-day lead times for all other ID+ 3.5" and 4.5" Downlights and Wall Washers configurations, as well as a selection of architectural troffers. It also offers 10-day lead times for linear, perimeter and cove luminaires – individual units, runs, patterns; ID+ 3.5" Adjustable Downlights; ID+ 3.5" and 4.5" Cylinders; and other architectural troffers.

Concurrent with the Quickship Red launch, Focal Point published new Quickship and Quickship Red guides on its website. These resources provide a com-

prehensive list of all product options that qualify for the Quickship and Quickship Red programs. Customers can simply complete a catalog number by selecting the options they require and marking the order as Quickship or Quickship Red for fast processing. And, when the job calls for unique designs, Focal Point's engineering team and US-based manufacturing facility are also available to support with custom luminaires.

More information can be obtained at focalpointlights.com/Quickship. □



ABOUT FOCAL POINT

Focal Point is a Chicago-based, vertically integrated architectural lighting manufacturer like no other. For over a quarter of a century, guided by our belief that great lighting isn't just about meeting technical design requirements – it's about people and enhancing their experience in the spaces they inhabit – our focus has been on creating superior luminaire designs that stand the test of time while comfortably defining the space. Staying true to our design credo, we are now integrating lighting and sound management using beautifully simple forms to complement architecture, deliver optimal illumination, and control sound. Learn more about our people, approach, and why we value trusted partnerships by visiting our web site at www.focalpointlights.com.

INTRODUCING THE NEW LOW PROFILE **VIGILANT® LED HIGH OUTPUT HIGH BAY**

BIG THINGS COME IN SMALL-ER PACKAGES



7" (17.8 cm)
48 lbs (21.8 kg)

This state-of-the-art fixture builds upon the performance of our popular High Output High Bay series with a lighter, lower profile design offering greater ease of installation. At just under 7" (17.8 cm) tall and 48 lbs (21.8 kg) this powerhouse can reach up to 71,000 lumens for mounting heights up to 100' (30.5 meters).

.....Dialight

Enespro Welcomes Vince Long to the Team

American PERMALIGHT® Inc. is pleased to welcome Vince Long to the team as a regional manager responsible for the South territory.

“We’re excited to have Vince on our team, and he’s looking forward to helping our customers solve their electrical PPE problems,” said Rich Gojdis, VP of Business Development at Enespro. “Vince also brings the extremely successful skill of a listen-first approach that aligns well with how we engage with safety professionals and users of electrical PPE.”

Vince’s previous roles at Salomon® and Arc’teryx® provided experience in technical garment outerwear, fabrics and textiles. This experience has given him the opportunity to translate his knowledge of protective clothing and passion for the industry into Enespro’s innovative line of arc flash PPE kits, arc flash suits, face shields, balaclavas and rubber voltage gloves.

Contact Vince or any of the other members of the Enespro team <https://enespro.com/pages/contact>, and see how we reinvented electrical Personal Protective Equipment. □



Vince Long



ABOUT ENESPRO

Enespro PPE was founded in 2018 by highly experienced professionals with long careers in the electrical safety industry. Why? Because electrical PPE hadn’t changed in decades. We knew we could do better. Our development process started with extensive market research with electrical and safety professionals, who confirmed what we already knew: Traditional electrical PPE is heavy, hot and uncomfortable. It’s hard to put on and take off. It slows you down. Makes the job harder. And it stinks. Until now. We are Enespro, and we’re proud to present a new generation of USA-made electrical PPE designed to actually make your job easier and, even more important, safer.

Barron Lighting Group Appoints New Growlite District Manager

Barron Lighting Group, the parent company to Exitronix life-safety and emergency lighting, Trace-Lite indoor and outdoor commercial and industrial lighting, specialtyLED commercial and decorative lighting, and Growlite indoor and greenhouse horticultural lighting, announces the addition of Jim Brown to the Barron team as Growlite District Manager.

“We are excited to welcome Jim to the Barron family and the Growlite team,” said Heather McCune, Vice President, Sales Operations of Barron Lighting Group. “Jim’s background in the horticulture industry and knowledge of horticultural lighting solutions will enable us to continue providing our customers with a strong level of support and product

knowledge, helping them make informed product selections for their indoor and greenhouse horticultural lighting applications.”

Jim will be responsible for building sales, brand awareness and business relationships in the indoor horticulture market throughout Arizona, Colorado and New Mexico. Through interactions with growers, retailers, consultants, and distributors, Jim will promote and represent Growlite and all Growlite products and programs. Before joining Barron, Jim spent over 10 years in the horticulture industry, five of which focused on horticultural lighting.

For more information about Growlite visit growlite.com. □



Jim Brown



ABOUT BARRON LIGHTING GROUP

Barron Lighting Group, based out of Glendale, Arizona, manufactures a comprehensive line of lighting fixtures and solutions for commercial and industrial applications and is the parent company to four brands: Exitronix life-safety and emergency lighting, Trace-Lite indoor and outdoor commercial and industrial lighting, specialtyLED commercial and decorative lighting, and Growlite indoor and greenhouse horticultural lighting. For more information, visit barronltg.com.

Topaz Opens New Distribution Center in Northeast

Topaz lighting Inc., a 35 year-old manufacturer of lighting fixtures and electrical fittings, opened a 200,000 sq. ft. distribution center in Monroe Township, NJ. The consolidation of inventory from their PA and NY warehouses into a single new flagship location will improve fill rates and reduce split deliveries.

“With the focus on our core philosophy of being the easiest company to do business with, we spent a considerable amount of time planning and executing the opening of this state-of-the-art facility. By in-

vesting in people, technology, equipment, and space, we are set to continue the superior service our customers have come to expect well into the future as our business grows,” notes Tim Gomes, CEO.

With enough racking to store 20,000 pallets of material, this facility will serve as the Northeast distribution hub supplying Topaz’s customers and Topaz’s Rep warehouses.

Dave Ingemi, VP of Supply Chain and Global Operations states “Our new facility is an integral part of our nationwide dis-

tribution capability. The sheer capacity of product that can be housed in the facility and its proximity to the port gives us maximum capability in supplying customers, our other two distribution centers, and our 12 stocking rep facilities located strategically throughout the country. I can’t express how pleased I am with the increased capacity and capability that will propel our service levels to new heights.”

The company has published a short video of the new facility which can be viewed at <https://www.topaz-usa.com/dc>. □



ABOUT TOPAZ

Topaz is a leading manufacturer of electrical fittings, LED fixtures and lamps, traditional lighting, and ballasts. With three distribution centers and 12 stocking warehouses across the country, Topaz is known for their In-by-4, Out-by-5 shipping program and friendly customer service that is unmatched in the industry. For more information on Topaz’s complete line of products for commercial and residential use, visit <https://www.topaz-usa.com>.

Barron Lighting Group Announces the Addition of the Equity Line of Contractor-friendly Lighting Solutions

Barron Lighting Group, the parent company to Exitronix life-safety and emergency lighting, Trace-Lite indoor and outdoor commercial and industrial lighting, specialtyLED commercial and decorative lighting, and Growlite indoor and greenhouse horticultural lighting, announces the addition of the Equity Line.

“Barron Lighting Group’s new Equity Line of contractor-friendly lighting solutions offers ultimate performance at an unparalleled value,” said Heather McCune, Vice President, Sales Operations of Barron Lighting Group. “Our new curated line of competitively priced products is available in the most popular product configurations, offers long-life dependable service and is in stock and ready to ship to quickly meet project needs.”

The Equity Line from Barron Lighting Group provides reliable, uniform illumination in an economical package for commercial and industrial applications. Equity Line products are durable enough for years of reliable service and are backed by Barron Lighting Group’s 45+ years of lighting experience and the most comprehensive warranty in the industry. The Equity Line provides exceptional lighting solutions at the most competitive pricing, and products are designed for convenience, maximum reliability as well as easy installation and maintenance.



**For more information, visit
barronlitg.com/equity-line.php**



DEWALT® Debuts XTREME Subcompact Series™ 12V MAX* Impact Wrenches For Tight-Area Jobs

New 1/2-In. and 3/8-In. Impact Wrenches Added to the Growing XTREME Subcompact Series™; Wrenches Deliver Upgraded Torque Levels

DEWALT adds to its growing line of XTREME Subcompact Series™ 12V MAX* tools with two new 12V MAX* Impact Wrenches in 1/2-In. (DCF901B) and 3/8-In. (DCF903B) sizes. At only 5.2-In. in length and a weight of 2-lbs. each (tool only), the compact impact wrenches enable access for jobs in tight areas. Each of the new 12V MAX* Impact Wrenches delivers up to 250 ft.-lbs. of max tightening torque and up to 400 ft.-lbs. of max breakaway torque for use in a variety of automotive applications including brake repair, engine bay work, suspension repair and more.

Both models feature a hog ring anvil for easy socket changes, glass filled nylon housing that helps to resist the effects of harsh automotive chemicals and solvents, as well as an LED light ring for visibility in low-light environments. Available where DEWALT products are sold in early 2021, the XTREME Subcompact Series™ 12V MAX* 1/2-In. and 3/8-In. Impact Wrenches will be sold both kitted and bare (tool only). Kitted units include two batteries, (1) 12V MAX* Oil-Resistant 3.0Ah Battery (DCB124G), and (1) 12V MAX* Oil-Resistant 5.0Ah Battery (DCB126G), as well as a DEWALT Charger (DCB112).

See below for additional information on SKUs and MSRPs.

**For more information, visit
www.dewalt.com**

SKU	Product	MSRP
DCF901B	XTREME™ 12V MAX* 1/2-In. Impact Wrench (Bare)	\$149
DCF901GJ1G1	XTREME™ 12V MAX* 1/2-In. Impact Wrench Kit	\$349
DCF903B	XTREME™ 12V MAX* 3/8-In. Impact Wrench (Bare)	\$149
DCF903GJ1G1	XTREME™ 12V MAX* 3/8-In. Impact Wrench Kit	\$349
PB901-03-11-13B	Protective Rubber Boot for DCF901, DCF903	\$19.99

*Maximum initial battery voltage (measured without a workload) is 12 volts. Nominal voltage is 10.8.



Eaton Offers Connected Surge Protection with New Power Xpert SPD

Eaton recently announced the Power Xpert® SPD, the latest addition to its family of surge protective devices, leveraging advanced connectivity to help protect critical equipment from potentially devastating surge events. Offering advanced monitoring display and communication capabilities in addition to historical surge logging, the Power Xpert SPD is the ideal solution for industrial environments where downtime caused by surge events is unthinkable.

The Power Xpert SPD enables customers to capture and categorize surge events by low, medium and high categories according to IEEE standard C62.41. The connected solution enables customers to remotely monitor surge data in real time or store events in a log with time and date stamps they can use to predict future surge events or enact proactive maintenance of critical equipment. The sophisticated device is also designed to ensure the highest level of cybersecurity available to protect against potentially devastating cyberattacks.

**For more information, visit
Eaton.com/PXSPD**

Liquatite® Flexible Food Grade Conduits Are Now Antimicrobial

ELECTRI-FLEX COMPANY, Roselle, IL, announces food processing flexible liquidtight jacketed conduit Types LAFG and LSSFG now have an improved PVC jacketing. These enhancements include a new food processing blue color, an even wider temperature range, and are now antimicrobial. Liquatite® Food Grade electrical conduits provide a flexible, liquidtight protective wiring raceway, ideally suited for Food Processing, Pharmaceutical, and Bottling Equipment installations.

Food Processing Blue Jacketing | The new food processing blue color has grown in popularity due to its increased safety features and is installed in food processing applications around the world. The blue color provides high visibility for fast moving machinery and operations. Blue coloring is also an important safety consideration, as manufacturers can easily spot the blue color if fragments break off and get into the product.

Antimicrobial | The flexible PVC jacketing now contains an antimicrobial biocide additive. This additive inhibits the growth of commonly known food processing microbes, such as E. coli, listeria, and salmonella, and even shows a reduction of these microbes over a 24-hour period.

Wider Temperature Range | These conduits now offer a wider temperature range, from -30°C through 105°C. These temperatures are critical considerations when installing near heat-producing food equipment, or with consistently hot washdowns.

- **LAFG**
 - UL: -30°C to 105°C / 60°C Wet / 70°C Oil
 - CSA: -30°C to 105°C / 75°C Oil
- **LSSFG**
 - -30°C to 105°C / 60°C Wet / 75°C Oil



Liquatite® Benefits | Types LAFG and LSSFG Liquatite® conduit are both Certified Components for NSF/ANSI 169 special purpose food equipment. These Types also meet FDA CFR21 and NSF 51/61 requirements, offer a smooth exterior for easy washdown, and are resistant to sodium hypochlorite (bleach).

Type LAFG | This UL listed, CSA certified “Heavy-Duty”, flexible liquidtight steel conduit, is ideally suited for a variety of installations regarding motion, vibration and bending on food processing equipment. Its core is made from hot-dipped galvanized steel. The flexible PVC jacketing is resistant to oils & mild acids and is made with an FDA approved compound.

Type LSSFG | This is a non-UL, liquidtight stainless steel, flexible conduit designed for a variety of installations requiring motion, vibration and bending on food processing equipment. It also offers excellent resistance to corrosion due to its stainless steel core, is resistant to oils & mild acids, and has a flexible PVC jacket made from an FDA approved compound.

**For more information, visit
www.electriflex.com**

Klein Tools® New Cable Cutter Adds Stripping to Increase Versatility

Klein Tools, for professionals since 1857, introduces the High-Leverage Cable Cutter featuring cable-gripping shear-type jaws, an integrated stripping hole and a high-leverage design to provide exceptional cutting capability.

Journeyman™ High-Leverage Cable Cutter with Stripping (Cat. No. J63225N)

- Cuts 4/0 aluminum, 2/0 soft copper, 100-pair 24 AWG communications cable
- Integrated stripping hole strips 1/0 and 2/0 cable
- State-of-the-art, dual material Journeyman™ handles provide a better grip
- High-leverage design for exceptional cutting capability
- Precision, one-hand shearing action
- Cable-gripping shear-type jaws
- Perfect for working in confined spaces
- Through-hardened (not case-hardened) for longer-lasting cutting surfaces
- Hot-riveted joint ensures smooth action and no handle wobble
- Custom, US-made tool steel for maximum durability
- Do not use to cut steel or ACSR



“Klein Tools’ team engineered the new High-Leverage Cable Cutter to require 30% less force to cut aluminum, copper and communications cable as compared to previous Klein Tools’ models,” says Jeff Meek, director of product management at Klein Tools. “The integrated stripping hole strips 1/0 and 2/0 cable making it easier for trade professionals to get the job done with less tools.”

**For more information, visit
www.kleintools.com**



Emerson Announces Updates to SolaHD Surge Protective Devices and Power Filters

Emerson’s SolaHD™ surge protective devices and power filters begin a new chapter recently with the introduction of several upgraded versions that give users more ways to prevent damage to mission-critical electronics driving the Industrial Internet of Things (IIoT) within their facilities.

Each of the new SolaHD devices has been redesigned to provide protection against the full spectrum of voltage transients and surges that may impair operation of distribution and control panels, factory automation systems, PLCs, and other industrial and machine tool equipment. Offering simple and rugged designs with fewer points of failure, the surge protective devices and power filters combine the strongest aspects of SolaHD legacy designs with entirely new designs and features tailored to the needs of today’s processes.

Machine downtime is the single largest source of lost production, typically accounting for almost 5 percent of factory losses—although many manufacturers lose more. For example, when the cost of equipment replacement and parts, labor, maintenance, delays, sales, and production are added up, downtime can exceed \$10,000 per hour. SolaHD surge protectors and power filters help maximize machinery efficiency, productivity, and longevity. Their engineering ideally compliments SolaHD’s comprehensive line of power protection and power conversion solutions.

**For more information, visit
www.solaHD.com**

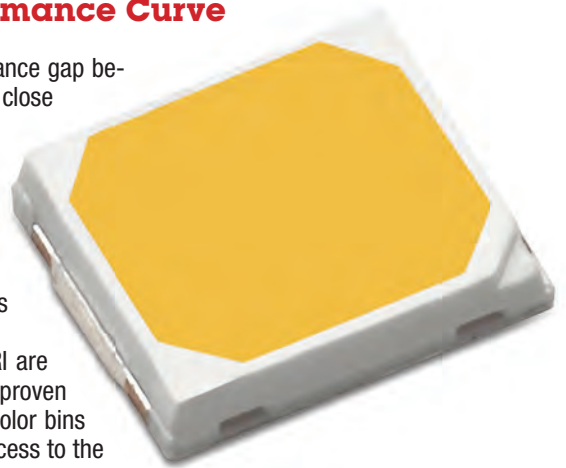
New LUXEON 2835N Extends the Mid-Power Performance Curve

Lumileds recently announced the new LUXEON 2835N, which fills in the performance gap between the LUXEON 2835C and the LUXEON 2835 HE. The three variants are relatively close in performance at 65mA – LUXEON 2835N delivers 204 lumens per Watt – as current increases, real differences in both light output and efficacy become clear. With its 300mA current capability and excellent thermal characteristics, the new LUXEON 2835N is an optimal 3V choice.

“The value of LUXEON 2835N really starts to show itself as luminaire manufacturers take advantage of its current and thermal capabilities,” said product manager Ryan Dong. “At 100mA, we’re delivering 190lm/W and at 150mA LUXEON 2835N is producing 72.8 lumens with an efficacy of 172lm/W.”

LUXEON 2835N is available in a complete CCT/CRI portfolio. Both 80 and 90 CRI are supported at CCTs from 1800K to 6500K. The incredibly reliable package has been proven with more than 12-thousand hours of data for the LM80 report. 4 quadrant micro color bins and 0.1Vf bins complete an offering for luminaire manufacturers that gives them access to the exact parts they need for success.

The new LUXEON 2835N is immediately available by contacting Lumileds. Additional information included the latest datasheet are available at



For more information, visit
<https://lumileds.com/2835N>



MaxLite Introduces Canless Commercial Downlights with Field-Selectable Wattages and CCTs

Building on the contractor-friendly features of its canless LED commercial downlights, MaxLite expands the popular RCF Series with wattage and CCT selectable models that enable installers to customize light outputs and color temperatures in the field.

The RCF is a labor-saving, all-in-one solution for adding recessed downlighting to hospitality, retail, office, and other commercial lighting applications. The downlight features a built-in driver and integral whip that can be connected directly to a junction box, eliminating the need for a traditional recessed housing. The ENERGY STAR certified series is available in four sizes (4", 6", 8", 9.5" sizes) to cover a full range of application needs. Each model provides a choice of three wattages and CCTs, helping lighting distributors

meet varied customer preferences with fewer SKUs. Outputs range from 900 to 3,400 lumens across the series.

The downlights may be paired with a field-installable emergency battery backup kit to enhance safety during loss of power. A safety cable is provided standard with the fixture, complemented by optional frames with an integrated junction box for use in new construction applications. View the product page for complete product specifications at: <https://www.maxlite.com/products/universal-downlights-wattage-color-selectable/>

RCF Series Highlights

- Color selectable (3000K/3500K/4000K)
- Wattage selectable (6", 8", 9.5") - 10W-40W
- Fixed wattage (4") - 12W
- Outputs from 900 to 3,400 lumens
- 120V-347V with 0-10V dimming
- IC Rated (4", 6", 8")

MaxLite offers a full range of wattage and CCT selectable LED indoor products that save energy, labor and shelf space. The portfolio includes flat panels, flush mounts and downlights.

For more information, visit
MaxLite.com

Milwaukee® Delivers the Boldest, Longest Lasting Markings with New SHOCKWAVE™ IMPACT DUTY™ 6 Point Sockets

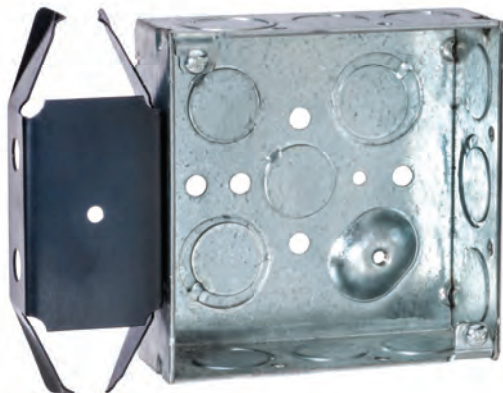
Milwaukee Tool continues to deliver ground-breaking accessory solutions with the introduction of the SHOCKWAVE™ IMPACT DUTY™ 6 Point Socket Lineup, available in 1/4", 3/8", 1/2", 3/4", and 1" drives. Engineered for use with impact wrenches, drivers, and ratchets, this new line of sockets features the boldest, longest-lasting markings and extreme impact durability to withstand high torque applications.

The SHOCKWAVE™ IMPACT DUTY™ Sockets provide maximum wear resistance with stamped and ink-filled size markings, making it easier for users to select the right socket for their application throughout the entire life of the socket. Constructed with high-strength forged steel, these sockets deliver optimized performance in heavy-duty applications, and a non-slip hex geometry prevents socket and fastener rounding. For easy socket attachment and removal, the sockets are complete with a dual-hole design and ring groove.

Completing the SHOCKWAVE™ IMPACT DUTY™ offering, Milwaukee® offers impact socket accessories including socket extensions, universal joints, adapters, and reducers. The impact socket extensions allow access in hard-to-reach places, while universal joints feature a 15 or 25-degree swivel to provide users with better access. For maximum versatility, impact socket adapters and reducers allow users to convert their tool for usage with different drive size sockets. The SHOCKWAVE™ IMPACT DUTY™ accessories are available in 1/4", 3/8", 1/2", 3/4", and 1" drive sizes. Retaining Rings feature a one-piece design and are made of a flexible rubber material for hassle-free installation on the sockets.



**For more information, visit
www.milwaukeetool.com**



New Square Mounting Plates Topaz Expands Box Supports Line

Topaz Lighting is pleased to introduce 4" Mounting Plates as a welcome addition to their growing line of versatile box supports. Installed with any bracket-less 4" box, these mounting plates provide flexibility for a variety of box depths and configurations.

With built in single or double gang device rings and offered in 1/2", ", and 3/4" depths, installers will have the option to match the three common wallboard thicknesses. Mounting plates were developed to conveniently mount a 4" square electrical box to a metal stud and eliminate the need for a far side support.

Michael Balsamo, Topaz Vice President of Product Management said, "At Topaz we are always looking for ways to make contractors jobs easier, but never at the sacrifice of quality. Our mounting plates with device rings feature oversized holes to easily view marked lines on a stud and are constructed of heavy-duty galvanized steel to ensure stability."

**For more information, visit
www.topaz-usa.com**

Triplett Simplifies Electrical Outlet & Equipment Troubleshooting with Re-Imagined GFCI Receptacle Testers

New testers improve ergonomics and expand testing capabilities

Triplett Test Equipment, a leading maker of test equipment tools, announced the launch of two GFCI receptacle testers designed to expand the versatility of this essential electrical troubleshooting tool. The ET200's integrated line-splitter makes it significantly easier to test both circuit wiring and connected electrical devices and appliances. The compact ET100 introduces an ergonomic "easy-pull" design to remove the tester from high-retention outlets.

The new tools are designed to make receptacle and electrical testing easier for commercial and residential electrical contractors, home inspectors, kitchen and bath installers, apartment/condo property managers, DIY'ers and handymen.

ET100 Easy-Pull GFCI Receptacle Tester

The compact ET100 tester re-imagines the GFCI receptacle tester by adding an ergonomic finger loop to ease removal from receptacles, especially those with high retention force. (Found in hospitals, schools, hotels, office buildings as well as residential kitchens and baths, these receptacles are designed to hold a plug's blades and grounding pin securely to ensure safety and effective grounding.)

As a full-function GFCI receptacle tester, the ET100 can pinpoint wiring faults in NEMA 5-15 receptacles used in residential and commercial sites throughout North America. A simple push-button test helps validate GFCI receptacles are operating properly. The color-coded 3-light display helps users pinpoint any one of five potential wiring issues: Open Ground, Open Neutral, Reversed Hot and Ground, Open Hot as well as Reversed Hot and Neutral. Codes are indicated on both side of the tester to ensure easy viewing regardless of the receptacle's orientation.

**For more information, visit
<https://triplett.com/online>**



Be sure to visit our newly redesigned website!

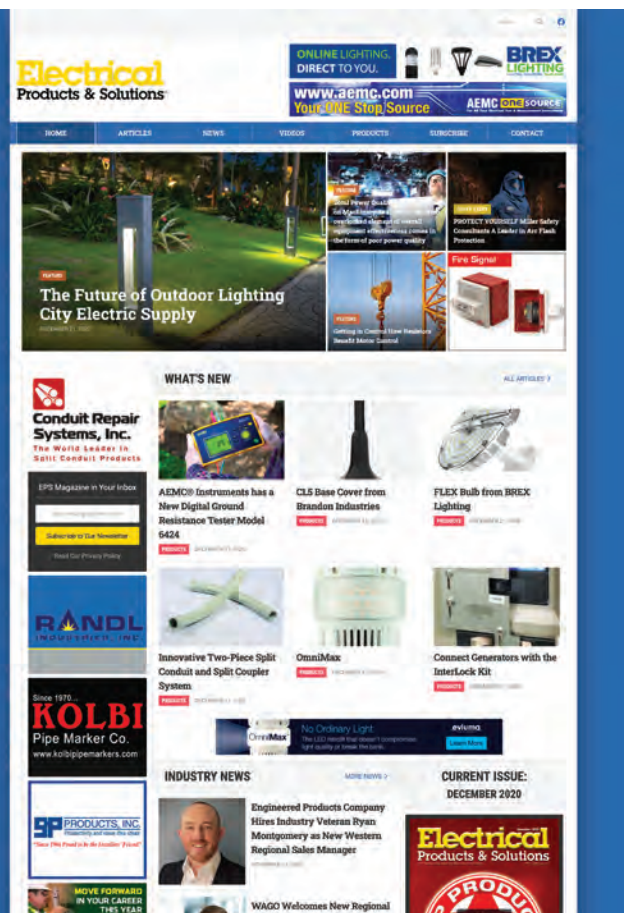
It's loaded with articles, industry news and new products from each issue of EPS.

Electrical

Products & Solutions™

The Purchasing Guide for Electrical Contractors

www.epsmag.net



This advertiser index is compiled as a courtesy to our readers. While every effort is made to provide a complete and accurate listing of companies and page numbers, the publisher is not responsible for errors.

Company	PG#	Company	PG#
AEMC INSTRUMENTS	IFC, 13	MEGGER	IBC
BRANDON INDUSTRIES	3	MILLER SAFETY CONSULTANTS, LTD	7
BREX LIGHTING	1	MOBILE DESK	14
CONDUIT REPAIR SYSTEMS	21	RANDL INDUSTRIES	15
DIALIGHT CORPORATION	23	SP PRODUCTS INC	11
EVLUMA	BC	TCP	17
GENERATOR INTERLOCK TECHNOLOGIES	5	TOPAZ	10
KOLBI PIPE MARKER COMPANY	32	UNDERGROUND DEVICES	19
KRENZ & COMPANY	32		

Since 1970...

KOLBI

Pipe Marker Co.
www.kolbipipemarkers.com

20% OFF
Mention this Ad

**Voltage Markers • Wrap Arounds
Engraved Nameplates
Arc Flash Labels • Conduit Labels**



Speak to our sales team!
Phone: 800-499-8450
E-mail: sales@kolbipipemarkers.com


"KEEP IT SIMPLE WITH KOLBI"

Made in the USA

When it comes to transformer cooling fans, Krenz-Vent is the industry recognized gold standard. Our leadership position is earned through 80+ years of R&D plus our superior engineering and customer service. You can rest easy when you specify Krenz fans.

ENGINEERED TO COOL

There is no comparison.



KRENZ & COMPANY, INC.

KRENZVENT.COM • 262.255.2310 • KRENZ@KRENZVENT.COM

Can you see motor testing solutions in your future?



MTR-TC kit

The MTR-TC kit – complete with the MTR105 rotating machine tester and TC3231 thermal camera – is a part of your predictive, preventative, and troubleshooting motor testing solution.

Built for your convenience, the MTR105 combines a suite of motor testing and fault diagnostic tools all in one hand-held unit, including the following tests:

- 1kV Insulation resistance (with temperature measurement and compensation) as insulation resistance varies with temperature
- DLRO (Digital Low Resistance Ohmmeter)
- Inductance and capacitance
- Voltage and resistance
- Motor direction, plus supply phase rotation

When used in combination with the TC3231 thermal camera, you can easily identify hot spots, loose connections, and bearing issues. Combining the convenience of an infrared thermometer with the visual advantage of a thermal imager, the TC3231's infrared heat map is the perfect troubleshooting compliment to the MTR105.

No crystal ball is needed when using the MTR-TC kit, a cost effective addition to your motor testing line-up!



For your free Application Note & Motor Testing booklet, visit us.megger.com/getbook.

Reference Code: MTR-TC_EPS_FEB

Megger[®]

OmniMax™

LED Replacement Lamps

Beautiful light with the performance and connectivity today's cities demand. Its compact, omnidirectional design means OmniMax installs effortlessly into your existing decorative fixtures.



No other LED retrofit does what OmniMax can do: Photocontrol Failsafe, Bluetooth controls, a wide range of CCT and a 10-year warranty will make this your best lighting investment of 2021.

- silicone optics for diffuse, low-glare light
- installs in any direction: up, down, horizontal
- active cooling & 4 layers of thermal management
- dimmable with ConnectLED, set dimming schedule
- offered in 6 CCT: 2000K-5000K
- 20kV-10kA surge protection
- radial light engine emulates HID burn center using the refractor's optical design the way it was intended!

Refurbish decorative streetlights with Evluma's

Build-Your-Own Acorn

featuring
OmniMax



evluma

www.evluma.com