

April 2020

Electrical Products & Solutions™

The Purchasing Guide for Electrical Contractors

www.epsmag.net

Manufacturers' Directory

A List of Our Industry's
Leading Manufacturers
and Suppliers

PLUS Company Profiles

The Best of the Best?
You Decide.



★ SPECIAL EDITION ★

GB[®]
Gardner
Bender

PORTABLE CYCLONE[®]

At only 35lbs.* the Portable Cyclone[®] is the world's first portable, all-in-one, powered conduit bender that doesn't break your back or your wallet!



90° Stub Bends in as little as 10 seconds. Including **RIGID CONDUIT**.



REDUCE THE RISK of injury when bending heavy conduit.



Patent Pending

CONDUIT BENDING CAPACITY

Type	Size		
	1/2"	3/4"	1"
EMT	✓	✓	✓
Rigid	✓	✓	✓
PVC-Coated Rigid	✓	✓	
IMC	✓	✓	✓
Rigid Aluminum	✓	✓	✓
EMT Aluminum	✓	✓	✓



*55lbs with PT200 Power Driver attached. PT200 Power Driver sold separately.

Order yours today!
gardnerbender.ecm.store





Luminaires for Less

Exclusive TCP Lighting Spring & Summer Rebates

Get back on track with big savings on a selection of energy-saving TCP LED luminaires. Choose from Linear High Bays or our LED DT Series - all with long 50,000 hour rated life!



Start saving today!

Secure your limited-time only rebates: Learn more at TCPi.com/contractor-rebates

Or call 888-706-0397

FOR FREE INFO, CIRCLE 4 ON READER SERVICE CARD

Sales must be placed through a distributor between 03/23/2020 - 09/30/2020. TCP reserves the right to change, modify or cancel this program at any time with or without notice.

CONTENTS



4



6



12

Company Profiles

*The Best of the Best?
You Decide!*

- 4 Miller Safety Consultants
- 6 Generator Interlock Technologies
- 12 AEMC® Instruments
- 16 Brandon Industries
- 18 Megger



16



18

20 Manufacturers Directory

*A List Of Our Industry's Leading
Manufacturers and Suppliers*

DEPARTMENTS

- 30 NEW PRODUCTS
- 34 AD INDEX

Electrical Products & Solutions™

The Purchasing Guide for Electrical Contractors www.epsmag.net

PUBLISHER

Danny J. Salchert

OFFICE MANAGER

Anita Salchert

CREATIVE DIRECTOR

Derek Gaylard

CIRCULATION DIRECTOR

Pam Fulmer



PRESIDENT

Danny J. Salchert

**EXECUTIVE AND
ADVERTISING OFFICES**
2009 Eagle Ridge Drive
Birmingham, AL 35242
phone: 205.981.4541
fax: 205.981.4544
www.epsmag.net
danny@epsmag.net

Electrical Products & Solutions™ is published twelve times a year on a monthly basis by ABD Communications, Inc., 3591 Cahaba Beach Road, Birmingham, Alabama, 35242, USA. *Electrical Products & Solutions™* is distributed free to qualified subscribers. Non-qualified subscription rates are \$57.00 per year in the U.S. and Canada and \$84.00 per year for foreign subscribers (surface mail). U.S. Postage paid at Birmingham, Alabama and additional mailing offices.

Electrical Products & Solutions™ is distributed to qualified readers in the electrical contracting industry. Publisher is not liable for all content (including editorial and illustrations provided by advertisers) of advertisements published and does not accept responsibility for any claims made against the publisher. It is the advertiser's or agency's responsibility to obtain appropriate releases on any item or individuals pictured in an advertisement. Reproduction of this magazine in whole or in part is prohibited without prior written permission from the publisher.

POSTMASTER: Send address changes to
ABD Communications, Inc., P.O. Box 382885
Birmingham, Alabama 35238-2885

PRINTED IN THE USA

RedBird LED

NEW High Output Stripit Kit[®]



17,000 to 34,000 Lumens
Made-in-USA BAA Compliant
190 lumens/Watt DLC Premium
10 year warranty 100,000 hour life

Best Linear High Bay Retrofit



Patents Pending Design embeds LED board in aluminum extrusion. Exceptional thermal management, mechanical toughness, flexible mounting options

Same Day Factory-Direct Shipping

Model #	Description	Lumens
S4-1-95W-50K	1-4' Strip, 95 Watts	17,000
S4-2-190W-50K	2-4' Strips, 190 Watts	34,000

Call Now for Special Pricing



Follow the RedBird
American Made Quality
Best Performance and
higher Savings



678-RED-BIRD (678-733-2473) www.RedBirdLED.com j.eppstein@redbirdled.com
4020 Steve Reynolds Blvd, Duluth, GA 30093

Protect Yourself

Miller Safety Consultants — A Leader in Arc Flash Protection

Vince Miller started Miller Safety Consultants, a veteran owned business in 1999. The goal of the business was to provide cost effective safety consulting, employee training such as: confined space entry, fall protection, electrical safety and provide sales of electrical shock and flash protective equipment and fall protection equipment to businesses in the Washington DC area.

Reliance Industries provided fall protection products and much of the sales and training was on behalf of the supplier. In 2000, the owner decided to retire from his business, and Vince decided to discontinue the fall protection line of his business and concentrate more in the electrical training and products.

Vince had been a distributor for Certified Insulated Products (CIP), a manufacturer of electrical insulated tools and electrical arc flash clothing manufactured by Otex in Rochester, New York. As a distributor, Vince provided sales through his internet website and much through relationships with electrical contractors. His training was a classroom environment and was provided directly to customers but he also taught as a sub-contractor for other safety consulting companies and the

Chesapeake Safety Council in Baltimore, Maryland. In 2005, Vince partnered with Vivid Learning Systems in Cascades, Washington to provide on-line training in safe work practices.

Training in electrical safe work practices is still provided locally in the Washington DC area and as a partner with an electrical engineering firm and online. The training is based on the Occupational Health and Safety Administration (OSHA) standards and the National Fire Protection Association (NFPA) 70E standard.

Miller Safety Consultants is now a distributor for Cementex USA, Burlington, New Jersey, for insulated tools and equipment and clothing from OTEX Protective, Rochester, New York.

The majority of his sales of products are from the web-based store. Cementex is

nationally known for their quality equipment. Otex Protective is becoming more known for their quality clothing. For years, they have manufactured their products under other provider labels. Vince chose to not create his clothing line, but to sell the manufacturer product.

Vince has worked with many electrical company employees to fine-tune the clothing to be more comfortable for the user. Working closely with the manufacturer, they have made slight changes in how the cloth pattern was modified to meet final production. An example is the lightweight 40 Calorie vented hood offered by Otex.

The material is of the latest technology. The vented assembly is constructed for balance on the back of the hardhat and the airflow is 27 CFM to prevent fogging of the face shield and provide cooling to the worker. It took over a year to develop the product with the user prior to having the hood “flash tested”. This product is now standard issue with many electrical contractors.

Being a small business and having quality providers has resulted in satisfied customers for Miller Safety Consultants. Being a direct supplier for OTEX Protective, another small business means customized customer needs can be met. □

*For more information, visit
Miller Safety Consultants at:
www.electricalsafetysupply.com, email
Vince at: sales@millersafetyltd.com
or give him a call at (703)367-0404.*



The V5™ 40 Cal Ultralight Lift Front Hood System

1. V5™ High-Volume Ventilator with ArcSense Interrupter™
 - Patent-Pending ArcSense Interrupter™ shuts off airflow after an arc flash, preventing further inhalation of manganese fumes
 - 27 CFM blower fans
 - Snap-in design, removable in seconds
2. Milwaukee M12 rechargeable battery and receiver
3. 1:1 Balance: Perfectly balanced back-to-front
4. Paulson face shields and brackets
5. Hood Handle for easy removal or transport
6. LED Head Lamp included

ULTRALIGHT Premium

Protect yourself from "Arc Flash"

SEE US AT
NECA
NATIONAL ELECTRICAL CONTRACTORS ASSOCIATION
BOOTH #1435

ARC FLASH LIFT-FRONT HOOD WITH V¹² HIGH-VOLUME VENTILATOR Compact. Powerful. Reliable

Our V¹² High-Volume Ventilator boasts an unexpectedly quiet, high output (35+ CFM) turbine fan to cool and circulate the ambient air within the hood. Fully protected beneath it's durable ABS shell and added fabric layering, the V¹² High-Volume Ventilator isn't just compliant, it's superior.



40 CAL/CM2 ULTRALIGHT CLOTHING BY OTEX

Our new dual-layer Ultralight clothing takes advantage of DuPont's® dedication to scientific advancement and Westex's® industry leading dependability. Weighing in 37% lighter than traditional HRC4 PPE, our Ultralight Clothing is the most innovative contender in the lightweight arena.

HYBRID LAYERING

Combined Fabric Weight: 14 oz

Outer Layer: DuPont® Protera
Color: Navy

Inner Layer: Westex Ultrasoft
Color: Safety Orange

FOR FREE INFO, CIRCLE 6 ON READER SERVICE CARD



CALL US TODAY

(703) 367-0404

OR VISIT OUR ONLINE ELECTRICAL SAFETY EQUIPMENT STORE
www.electricalsafety.com

Generator InterLock Technologies, LLC

Generator InterLock Technologies, LLC, is a small-based company that manufactures and sells its products across the country. The company was founded after Hurricane Isabel hit the east coast in 2003. The product was developed to meet the need for a safe way to use portable generators to power homes in the event of power loss.

The initial inspiration for the product came from a persistent friend of an electrician working for Master Electrical Services. As electrical contractors, they had seen various unsafe and illegal methods that people had used to try to power their houses with their portable generators.



The electrician set out to develop a product that would meet National Electrical Code requirements and at the same time be cost effective and convenient for the homeowner. From that original inspiration came a new company: Generator Interlock Technologies or GIT.

The Interlock Kit is a simple safety product that locks out the Main breaker in the existing home panel and allows for the portable generator to power the home through a back feed generator breaker. While many electrical inspectors liked the product; they all agreed that the product would have to be listed to UL standards. After thousands of dollars in fees, rigorous tests, a year of changes and modifications, the Interlock Kit was finally approved for production to be used with panels listed under UL Standard 67.

The company started filling orders in early 2005, using Master Electrical Services as its basis for customer awareness. Starting with a few kits that fit the most recent Square-D and Cutler Hammer panels, the offerings grew to over 30 different models in less than one year. Generator Interlock Technologies now has kits for panels from 30 years ago to the most current and they continue to

add new kits to meet their customer's needs. While contractors in Florida and the North East are the biggest customers, Interlock Kits have been sent throughout the United States and parts of Canada. Whether the power loss is due to coastal hurricanes or from crippling ice storms in the northern , GIT has a kit that will allow customers to keep the power on in their homes.

The Interlock Kits are designed to be installed by licensed electricians and are cost effective for both the customer and the installer. Other products on the market such as generator sub-panels and transfer switches require extensive rewiring of the home panel, often taking the electrical contractor 6 to 8 hours to install. With the Interlock Kit, a qualified electrician can install a complete system in 2 hours or less by simply mounting the correct kit to the face of the panel and wiring a generator convenience outlet to a breaker installed in the panel.

To use their portable generator, a homeowner plugs an extension cord from their generator to the new generator convenience outlet. He then starts the generator, turns off the main breaker, slides the Interlock Kit, turns on the generator breaker and selects the circuits for use up to the capacity of the generator.

Generator Interlock Technologies' Kit is a defining safety product that has been recognized as a Innovation Award Winner by *Electrical Contracting Products* magazine and one of the Top Products by *Electrical Products and Solutions* magazine.

Generator Interlock Technologies, LLC, has taken a problem of safety and convenience and developed a system to keep danger and expenses to a minimum. Starting with an idea of helping a friend in need, to helping thousands across the country, GIT continues to grow due to its commitment to deliver a quality product. Visit www.interlockkit.com for a complete list of products and details. □

With the Interlock Kit, a qualified electrician can install a complete system in 2 hours or less by simply mounting the correct kit to the face of the panel and wiring a generator convenience outlet to a breaker installed in the panel.

INTERLOCKKIT

A Generator InterLock Technologies Product



Generator InterLock Technologies

**Quickly & Safely Connect
Portable and Standby Generators to
Home Panels with the INTERLOCKKIT**

Advantages over existing options include:

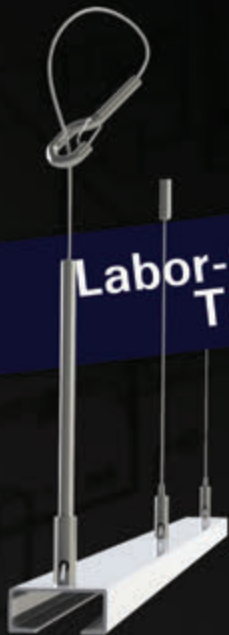
- Quick installation that provides the contractor and consumer with less cost.
- Our kits allow you to safely and legally use generators to feed the existing panel, permitting quick and convenient use of all original circuits.
- InterLock Kits retrofit to any existing panel and require no additional wall space.
- Tested for use with UL 67 Listed Panelboards
Ref. Wyle Laboratories Test Report T52431-01
- Same day shipping available on all models.

**Quick installations make you more money.
Do yourself and your company a favor and
learn more about the InterLock Kit today!**



To order or learn more about the **INTERLOCKKIT**
visit us at www.interlockkit.com or call 804-726-2448

FOR FREE INFO, CIRCLE 7 ON READER SERVICE CARD



Labor-Saving Installation
Tool-Free Adjustability



QUALITY PRICE

THE PERFECT BALANCE



Everything but the Light
Complete Cable Suspension Kits

Portable Fuse Cutter

Cut & Fuse Aircraft Cable Instantly
Portable - Affordable - Easy Field Use



Contact Us

**GRIP
LOCK**
SYSTEMS

FOR FREE INFO, CIRCLE 8 ON READER SERVICE CARD

www.griplocksistemas.com
866-636-2981

®

SPP PRODUCTS, INC.

Productivity and value thru ideas

Proud to be the Electricians' Friend for Over 50 Years!

IP26 Flat "Big O" Box Support Plate

UL
PATENT PENDING



SAVES OVER 1 HOUR PER INSTALLATION

Prefabricated Assemblies

SAVE More Than \$15.00 per Wall Outlet

PFA3



Conduit & Box Support Plates

UL

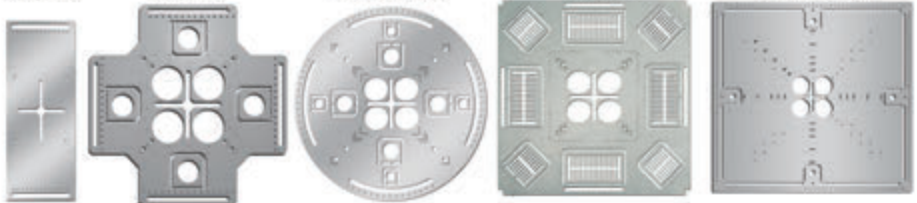
IP5
PATENTED

* IP6
PATENTED

* IP6c
PATENT PENDING

* IP7
PATENTED

IP8
PATENT PENDING



Support From Only ONE Rod Plus Eliminates Conduit Clamps
Save More Than One Hour per Installation! *

IP11 Trapeze Brackets

Original EZUTB - Size 1/2" thru 1 1/4" Conduit or equal size MC Cable.

SAVE OVER 20 MINUTES PER FOOT



TRAPEZE Eliminates ALL Conduit Clamps!

NECA SHOW STOPPER 1997

IP13a-13h

Transition Couplings



a



PVC to PVC

b



PVC to EMT

c



PVC to Rigid

d



PVC to Flexible

e



PVC to Aluminum

f



PVC to Stainless

g



PVC to Lignite

h



PVC to EMT Comp.

Sizes 1/2" thru 6" Schedule 40/80 Conduit

IP15 1 Piece Reaming Bit

PATENT PENDING

1/2" thru 6"

High Speed Steel for Long Life.

IP19 4-Conduit Block

PATENTED

Support up thru 4 conduits From ONLY 1 ROD!

SAVE OVER 30 MINUTES PER INSTALLATION



IP21a QwikBlock Box Support

PATENT PENDING

NEW

Accepts Both 1/4" & 3/8" Threaded Rod



IP28a 2 Box Flat Fixed Position

PATENTED

Strong 16 Gauge Galvanized Steel



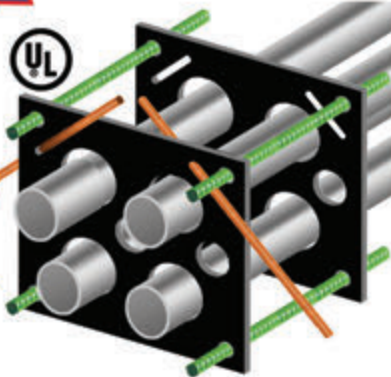
Mount Boxes on Both Sides or Between Studs

IP1 QwikDuct HDPE CUSTOM TEMPLATES

LOWER CONDUIT FROM ABOVE
NO WORKERS BELOW PREVENTS INJURIES OR DEATHS
4,000 PSI TENSILE STRENGTH AT BREAK
OVER 12X FASTER THAN SPACERS & CHAIRS

FOR FREE INFO, CIRCLE 9 ON READER SERVICE CARD

PATENT PENDING
NECA SHOW STOPPER 2000



UL

PATENT PENDING

IP3a End Bell Adapter



Smooth Edges Allow Trouble Free Wire Pulls.
PVC Schedule 40 & 80
Sizes 1/2" thru 6"

UL
PATENT PENDING

NEW Snap-On Adjustable Back Box Support

IP18a PATENT PENDING



IP3b PVC Offset

1/2" thru 6" Conduit
1/2" thru 2" Offset
PATENT PENDING



Plus More That Do Jobs SAFER BETTER FASTER Constantly Being Invented!

SPPProducts.com 800-233-8595 info@SPPProducts.com



DRIVEN TO DELIVER

THE CONSOLE X



- Clean up those cabs and get your fleet organized!

Your Total Mobile Office Solution

The Truck Console -X combines your Laptop Work Station, Radios, Speakers, Cables, Storage and Cup Holders, No Drill Installation Brackets Included.

The **Truck Console -X** is the latest innovative mobile office solution to join the Mobile Desk brand family of products. This complete control, communication and convenience Utility Truck Console is becoming the new standard for fleets of all sizes. The design of the **Truck Console -X** has originated from our years of experience working directly with the lineman, supervisors, communications, and fleets of some of the most notable utility companies in America. Loaded with standard and optional features that maximize ergonomics, productivity, and fleet/telecom standards into one Mobile Office Solution.

Screen Out™ SCREEN-DISABLER™

Blanks your screen while you drive!

Our Patented Screen Out App **Stops texting** while driving for all employees on all tablets, laptops and smart phones that run Windows, iOS or Android Operating Systems. **It's that easy!**

877-663-3375 Ext 303. www.screenout.net

Find us on:



1-877-663-3375

www.mobiledesk.com

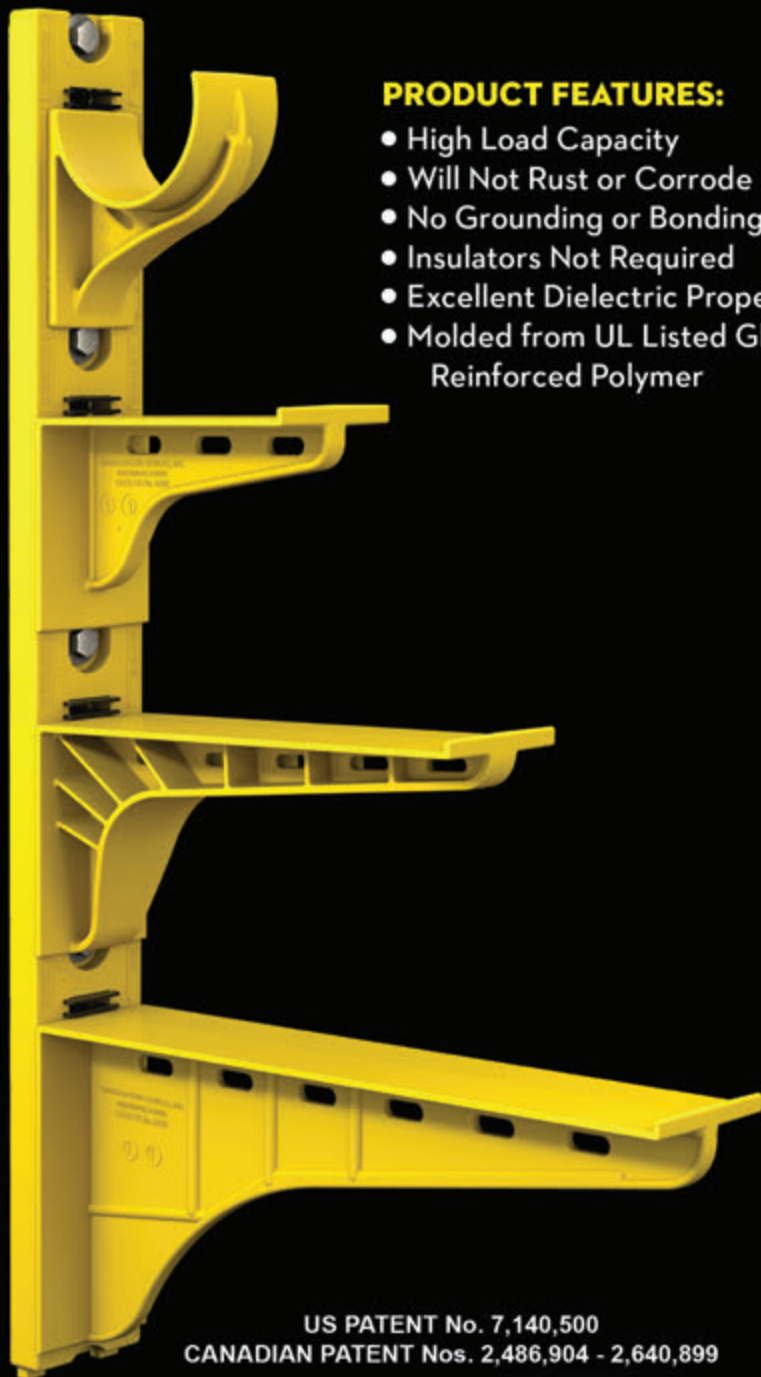
©2018 Mobiledesk

FOR FREE INFO, CIRCLE 10 ON READER SERVICE CARD

The Heavy Duty Nonmetallic CABLE RACK



For Power and Communications Manholes And Vaults



PRODUCT FEATURES:

- High Load Capacity
- Will Not Rust or Corrode
- No Grounding or Bonding
- Insulators Not Required
- Excellent Dielectric Properties
- Molded from UL Listed Glass Reinforced Polymer



HDL Arm Lock shown with
RA04 Arm and CR36-B Stanchion



3HDS - 3" throat saddle shown with
a cable secured by cable ties.



RA08 - 8" arm shown with three
cables secured by cable ties.

US PATENT No. 7,140,500
CANADIAN PATENT Nos. 2,486,904 - 2,640,899

UNDERGROUND DEVICES
INCORPORATED



420 ACADEMY DRIVE
NORTHBROOK, IL 60062
Phone: 847-205-9000 • Fax: 847-205-9004
Website: www.udevices.com



AEMC® Instruments

AEMC® Instruments with U.S. operations in Dover, NH and Foxborough, MA began operations here in 1976 in downtown Boston. As a legal entity, AEMC is Chauvin Arnoux®, Inc. d.b.a. AEMC® Instruments and is affiliated with Chauvin Arnoux SA in France founded in 1893 and today is still a test and measurement instrument industry leader. Our products are backed by over 125 years of experience in test and measurement equipment, and encompass the latest international standards for quality and safety.

AEMC manufactures professional electrical test and measurement instruments for the industrial, commercial and utility marketplace. Product reliability, excellent customer support and expert technical assistance are our top priority.

AEMC® is the worldwide industry leading manufacturer of current measurement probes and is an industry leader in ground resistance testers, insulation resistance testers and power quality, and power energy meters and loggers. Our full product line also includes clamp-on meters, ratimeters, power meters, harmonic power meters, data loggers, thermal imagers, lightmeters, oscilloscopes, micro-ohmmeters and numerous other electrical test tools.

Our Megohmmeter line finds its roots in the early 1900s when Chauvin Arnoux introduced its first model made from a galvanometer and a decade resistance box combined with a DC power source. Today, AEMC's megohmmeters are digital and incorporate many intelligent features. Timers, alarms and variable test voltages are standard features. AEMC has intro-

duced a unique line of professional 1000, 5000, 10,000, and 15,000 volt megohmmeters with added features, such as: data storage; automated tests and results (internal calculations of DAR, PI, DD and other factors); PC Control; and report compliant software.

Our Ground Tester line finds its roots in the early 1930s. A null balance galvanometer, a decade resistance box and a DC power source combined to make one of the first ground testers on the market. Over 20 years ago, AEMC revolutionized the ground testing market by offering clamp-on ground resistance testers, eliminating the need to disconnect the system to test it and eliminating the need for auxiliary rods to do the test. Several generations of improvements and additional features has strengthened AEMC's position as the industry standard and leader in clamp-on ground resistance testers.

We again led the way in fall-of-potential ground testing with the introduction of an automatic tester in 2006 that automatically locked onto the optimum frequency to test at and calculated all test results for soil resistivity, ground resistance earth coupling and bond resistance, as well as, stored the test data and generated computer reports including fall-of-potential plots. Our latest introduction, a tower test system, again is an innovative design providing the ability to test tower grounding systems with out de-energizing them or removing the overhead ground conductor, saving considerable time and money and improving operator safety.

AEMC's line of current probes has long been the standard for Power Quality analy-

sis with the world leaders in power quality instruments standardizing on these probes for their current measurement source. We also manufacture and sell a wide variety of Power and Power Quality measuring instruments ranging from clamp-on meters to single and three-phase power quality analyzers and digital power meters.

AEMC's DataView® software designed to configure instruments, run tests, download and store results and generate final reports was added to the product offering in late 1990s. Today DataView® is compatible with our Megohmmeters, Ground Resistance Testers, Micro-Ohmmeters, Power Quality Analyzers, Power and Energy Loggers, Data Loggers and Multi-meters, thus offering the user a standard for interface and control to all its products eliminating the need to learn new software every time. Additionally, tablet and Smartphone Apps based on the Android platform are now available free of charge for our power, ground and clamp-on products.

In addition to its product offering AEMC offers a one day accredited course in ground resistance testing. The Ground Resistance Testing seminar is designed to give the attendee all the information needed to understand proper sizing and testing of grounding systems. Through a combination of classroom instruction and hands-on demonstrations, they will learn the various types of ground resistance tests, the proper application for each test and how to correctly operate the equipment used in conducting these tests. In addition, the student will have all the information to conduct ground resistance testing correctly and efficiently, saving them substantial time and money in the future. Classes on Power Quality were added in 2016.

Sales and marketing are located in Foxborough, MA while production, product service and NIST calibration are located in Dover, NH. AEMC® products can be purchased through a worldwide network of distributors who can be found on our website at www.aemc.com. We also offer custom products on an OEM basis.

Visit our website at www.aemc.com to get information on our products and services and to get detailed information on attending one of our seminars. AEMC prides itself as your one source for test and measurements instruments and training. □

AEMC **ONE** SOURCE[®]

www.aemc.com

Your ONE SOURCE for all Your Electrical Measurement Instrument Needs

Cable Testers
Clamp-On Meters
Current Measurement Probes
Data Loggers
Digital Multimeters
Electrical Test Tools
Environmental Testers
Ground Resistance Testers
Leakage Current Meters & Probes
Megohmmeters
Micro-Ohmmeters
Oscilloscopes
Power Quality Analyzers, Meters & Loggers
Test and Measurement (Lab) Instruments
Thermal Imaging Cameras
Transformer Ratiometers



Our products are backed by over 125 years of experience in test and measurement equipment and encompass the latest international standards for quality and safety.

200 Foxborough Blvd. • Foxborough, MA 02035
(508) 698-2115 • FAX (508) 698-2118 • sales@aemc.com
Technical Hotline (800) 343-1391 • www.aemc.com

FOR FREE INFO, CIRCLE 12 ON READER SERVICE CARD



HERCULOCK

Hercules Industries, U.S.A.®

Solid Brass Padlocks

Hercules Industries, Inc. brings to you the most complete line of solid brass tumbler pin padlocks.

Our locks serve the needs of utilities, state and local governments, business, and agriculture. Precision crafted out of solid brass, our locks withstand inclement weather conditions, and are available with brass, stainless steel, and heat treated (HT) stainless steel shackles. Locks are available keyed alike or different, masterkeyed, and grand masterkeyed. We also can key our locks to most popular keyways (ie. Master, Corbin, Yale, Best, and others).

We are committed to competitive prices, fast delivery, and top quality.



HERCULES INDUSTRIES, INC.
Manufacturer of HERCULOCK Padlocks
P.O. Box 197 • Prospect, Ohio 43342
Toll Free: 1-800-345-2590
Fax: (740) 494-2274

www.HERCULOCK.com

FOR FREE INFO, CIRCLE 13 ON READER SERVICE CARD

First there was 4 square... and now the **REVOLUTIONARY 5 Square®** Box!!

You've struggled with 4 Square boxes for years - you know how small, cramped and time consuming they are. Finally, there is a solution that allows you the space you have always needed.

The **5 Square®** Boxes (5" x 5" x 2-7/8") provide up to 88 in³ of interior volume which more than doubles that of most existing boxes on the market.

Create a robust and unrivaled infrastructure for the life of your facility with the **5 Square®** Products!

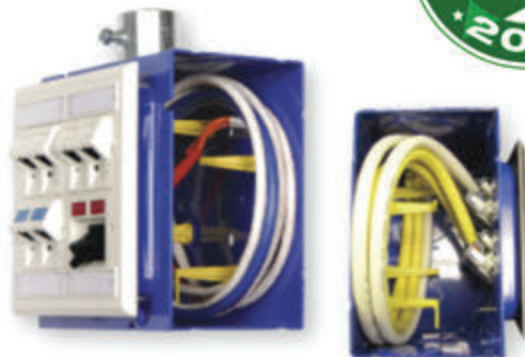


Fire Signal



- TWICE THE VOLUME AS MOST BOXES
- SAVE LABOR...INCREASE PROFITS
- ELIMINATES TROUBLESHOOTING TIME AND COST
- FULLY UPGRADEABLE SYSTEM
- SPECIFIED BY ENGINEERING FIRMS, HOSPITALS, UNIVERSITIES & GOVERNMENT AGENCIES
- AVAILABLE IN ZINC OR RED

Telecommunications



- INTEGRAL CABLE MANAGEMENT
- SAVE LABOR...INCREASE PROFITS
- FACILITATES MIN. BEND RADIUS REQUIREMENTS
- SUPPORTS CURRENT AND EVOLVING SYSTEMS
- SUPPORTS PoE PLUS
- SPECIFIED BY ENGINEERING FIRMS, HOSPITALS, UNIVERSITIES & GOVERNMENT AGENCIES

Creating a Brighter World Since 1987, One Street at a Time

We make your neighborhood and downtown look good.

The ultimate source of streetscape solutions, ranging from beautiful decorative street lights, custom street signs, decorative sign posts, outdoor lamp posts, decorative mailboxes and CBUs. We carry a full family of products.



Bring visually stunning spaces to life with our energy-efficient luminaires, antique street lamps, courtyard lights, custom sign posts, traffic signs, parking signs CBU's and cast aluminum mailboxes.

Brandon Industries has been at the forefront of enhancing the face of America's neighborhoods, while retaining their heritage for over 33 years. Our company is headquartered in McKinney, one of the largest areas with historic homes in Texas. With growing demand, we have expanded our offices and production units. Brandon Industries has satisfied customers across the board, in municipalities, residential, and business developments all over the United States.

Sustainable and thoughtful

LED is one of the often misunderstood components of streetscaping;

requiring a thoughtful approach rather than just replacement of fixtures. In outdoor public spaces just retrofitting HID lamps with LED often leads to over lighting. Backlight, up light and glare should be taken into consideration to avoid wastage of light and unwanted glare for drivers as well as pedestrians.

Uncompromising Quality

Not all LEDs are made the same. Low power consumption, higher lumen output and high CRI are the basic requirements. Cheap inferior products are created by

cutting corners using low quality materials, poor manufacturing methods, and lower rated components. At Brandon Industries, we stand by our quality.

Opportunities

We understand that as a landscape architect you have several challenges. While designing a private place it could be:

- Designing appropriate lighting for long and winding driveways, that are difficult to navigate once the sun goes down
- Creating small spaces that are private yet tasteful

While landscaping public spaces like parks, have a different set of challenges:

- The need for well lighted areas that make people feel secure
- An area which is pleasing to the eye and can be used by people of all ages
- Clean and hygienic

In addition to luminaires and a variety of lamp posts, bases & post tops we also have LED bollards that keep pedestrians safe, a wide range of comfortable park benches to enjoy leisure and trash cans to keep the environment tidy.

We make it easy for you, with all your streetscaping project needs under one roof. Eliminating the inconvenience of you having to reach out to multiple vendors, and waste time and effort in the back and forth communication.

Quick Quotes and Blazing Fast Turnaround

Talk to one of our expert sales representatives if you have a question, want a custom order or want a quote. Our lead times are typically two weeks- as fast as you'll find in the industry.

Check out our catalog and ask us if we can help you with your project. You'll love our distinctly Texan, warm hospitality. Please visit our company website at www.brandonindustries.com □



Brandon Industries® Offers an Extensive Lineup of High Value, Decorative Lighting Solutions For Your Next Project!

LED Post Tops • Base and Poles • Globes • Bollards • Complete Lighting Units

Your neighborhood or downtown district deserves defined character – our distinct and made to last pedestrian scaled lighting solutions deliver an experience beyond your expectations.



LED Lighting | Decorative Signage | CBU's & Mailboxes | Site Furnishings

800-247-1274

BrandonIndustries.com

FOR FREE INFO, CIRCLE 15 ON READER SERVICE CARD

Megger

For over a century, Megger has been synonymous with quality and reliability in portable electrical test equipment. But where did the famous Megger name, a guarded trademark of Megger Group Limited, come from?

Back in 1888, electric lighting was growing in popularity. Sidney Evershed was working for Goolden & Trotter, a company with a department that specialized in domestic installations. To verify the safety of those installations, a method of testing insulation was needed. At that time, insulation resistance could only be measured in a laboratory, and the measurements were carried out at low voltages, typically around 2 V.

Evershed knew from research that testing at such low voltages gave unsatisfactory results, and to ensure the safety of an installation, it was essential to test the insulation at its working voltage or higher. He also knew that the laboratory techniques for measuring insulation resistance were unsuitable for use on site.

His response was to develop the first direct-reading ohmmeter, which comprised a small permanent magnet suspended at the center of, and controlled by two coils at right angles to each other. One coil was connected directly to the voltage source energizing the ohmmeter; the other was connected to the same voltage source via the insulation under test. This meant that the results obtained were independent of the voltage.

Evershed energized his ohmmeter with a hand-cranked generator, similar to the type in use at the time for ringing telephones. The instrument proved so successful that Evershed patented it, and Goolden & Trotter started to manufacture and market it in 1889.

In 1895, Sidney Evershed and Ernest Vignoles, another Goolden & Trotter director, purchased the company's instrument department and set it up as Evershed

& Vignoles Limited. The insulation testers made by them were given the name Megger. On May 25, 1903, the company registered the word Megger as trademark number 254820 in the UK. It has since been registered in almost every country.

The exact date the word Megger was first used is not known, but it is believed Vignoles devised it. Some sources suggest that it is a contraction of the words MEGohm and metER, with the addition of a

In 1910, Dr. Rowland, Electrical Department head at Philadelphia's Drexel Institute told Biddle about a device for measuring insulation resistance that was manufactured in England by Evershed & Vignoles, and that this company was, with the aid of the British Consul in Philadelphia, looking for US representation.

Biddle traveled to England and, with a handshake, concluded a deal with Evershed & Vignoles, which made his company the sole distributor in the US for all Evershed & Vignoles test equipment, which included Megger insulation testers, earth testers and Ducter low-resistance ohmmeters.

Initially, Biddle ordered five Megger insulation testers, which he sent out on consignment to his close engineering acquaintances and public utility companies. Four out of five recipients decided to buy the instrument they had been sent. The success of the products helped Biddle to expand his operations.

In 1936, the business was incorporated as the James G. Biddle Company.

Biddle retired in 1940, and in 1945 was appointed Chairman of the Board. During World War II, because of the difficulty of obtaining equipment from England, Biddle started its own manufacturing operation for Megger insulation testers in the US.

After several ownership changes, Evershed and Vignoles joined forces with AVO Limited, the company that developed the world's first multimeter, to form Megger Instruments. In 1991, Biddle and Megger, along with Multi-Amp, came together to form the organization then known as AVO Megger Instruments.

Today, the organization is known as Megger Group Limited. With development and manufacturing facilities in the US, the UK and Sweden it is, and has been for more than 100 years, a world leader in the electrical test equipment field.

The Megger name is so well known that it is incorrectly used as a verb that means "to perform an insulation test." Megger remains a registered trademark and Megger Group rigorously defends and takes all necessary steps to address improper usage that come to its attention. □



James G. Biddle



Ernest Vignoles



Checking DC motor armatures with a Megger Insulation tester—1930's style!

G, while others suggest that the original words were MEGohm and testER. Either way, the result is one of the best-known and respected trademarks in the electrical industry worldwide.

On Washington's birthday in 1895, while Evershed and Vignoles was being set up in England, James G. Biddle started his own business in Philadelphia. He acted as a manufacturers agent, arranging to import and sell scientific and electrical equipment made by overseas manufacturers.



**A step ahead of
the rest...**

Megger insulation testers

When your testing requires the best instrumentation, look no further than Megger. Our insulation resistance testers cover 5, 10 and 15-kV range and offer the tried and true name of Megger.

Some of the features of the MIT Series of 5/10/15 kV insulation testers include:

- Unique dual-case design for added protection
- Advanced memory storage with time/date stamp
- Unrivaled guard terminal performance exceeds others on the market
- Double insulated test leads for extra safety and reliability
- High noise immunity — 3 mA (5 and 10 kV) and 6 mA (15 kV)
- Safety rating — CATIV 600 V to 3000 m (5 and 10 kV);
- CATIV 1000 V to 300 m (15kV)



Stay ahead of your testing needs with the Megger MIT Series of 5/10/15 kV's!



For your **FREE** copy of Megger's
Guide to Insulation Testing Above 1 kV,
Visit www.megger.com/getbook

Reference Code: MIT_STEP_EPS_APR

Megger[®]

FOR FREE INFO, CIRCLE 16 ON READER SERVICE CARD

ALTERNATIVE POWER

PHASE-A-MATIC

39360 3rd St. E., Suite 301
Palmdale, CA 93550
661.947.8485
661.947.8764 (fax)
www.phase-a-matic.com

STEELMAN INDUSTRIES

PO Box 1461
Kilgore, TX 75663
800.337.5827
903.984.1384 (fax)
www.steelman.com

SURGE SUPPRESSION INC.

109 Melvin Street
Destin, FL 32541
850.654.5559
Surgesuppression.com

GROUNDING EQUIPMENT

CONTINENTAL INDUSTRIES

1140 North 129th East Ave.
Tulsa, OK 74116
800.558.1373
www.thermoweld.com

ERICO INC.

34600 Solon Road
Solon, OH 44139
440.248.0100
800.853.0874 (fax)
www.erico.com

HAND TOOLS

KING INNOVATION

N85 W12545 Westbrook Crossing
Menomonee Falls, WI 53051
262.293.0600
www.kinginnovation.com

MILWAUKEE ELECTRIC TOOL

1024 Pine Hall
Mathews, VA 23109
262.790.6334
www.milwaukeetool.com

NON CONDUCTIVE TOOL CO., LLC

2675 Skypark Drive Suite 302B
Torrance, CA 90505
310.325.0779
voltclaw.com

PLATINUM TOOLS

606 Calle Plano
Camarillo, CA 93012
805.384.2777
www.platiumtools.com

LIGHTING & CONTROLS

AMP LIGHTING

15486 N. Nebraska Ave.
Lutz, FL 33549
813.978.3900
www.amplighting.com

BARRON LIGHTING

7885 N. Glen Harbor Blvd
Glendale, AZ 85307
800.533.3948
www.barronltg.com

BERGEN INDUSTRIES

N85 W12545 Westbrook Crossing
Menomonee Falls, WI 53051
262.293.0600
www.bergeninc.com

BREX LIGHTING

1601 Wilmeth Rd.
McKinney, TX 75069
877.273.9533
www.brexlighting.com

CANDEX LIGHTING

1928 Tyler Ave., Unit N
South El Monte, CA 91733
800.223.3055
www.candexlighting.com

CONTRACTOR LIGHTING & SUPPLY

1213 Etna Pkwy.
Pataskala, OH 43062
833.446.7100
www.contractorlighting.com

CONSTRUCTION INNOVATIONS

5714 Folsom, Blvd. Suite 155
Sacramento, CA 95819
855.725.9555
Constructioninnovations.com

COST LESS LIGHTING

1213 Etna Pkwy.
Pataskala, OH 43062
833.504.9980
www.costlesslighting.com

DABMAR LIGHTING

2140 Eastman Ave.
Oxnard, CA 93030
805.604.9090
www.dabmar.com

DOUGLAS LIGHTING CONTROLS

4455 Juneau St.
Burnaby, BC V5C 4C4
604.873.2797
www.douglaslightingcontrols.com

EMIUM LIGHTING

451 OAKWOOD RD
LAKE ZURICH, IL 60047
224.735.3435
www.emium.com

FOCAL POINT

4141 S. Pulaski Road
Chicago, IL. 60632
Telephone: 773-247-9494
www.focalpointlights.com

GREENSHINE NEW ENERGY

23661 Birtcher Drive
Lake Forest, CA 92630
949.609.9636
Streetlights-solar.com

GREENTEK ENERGY SYSTEMS

1000 Laval Blvd.
Lawrenceville, GA 30043
770.744.1300
www.greentekenergysystems.com

GRIPLOCK SYSTEMS, LLC

1029 Cindy Lane
Carpinteria, CA 93013
805.566.0064
www.griplocksystems.com

GRIPLOCK SYSTEMS, LLC

793 Duncan Reidville Road
Duncan, SC 29334
805.566.0064
www.griplocksystems.com

HYLITE LED LIGHTING

911 East White St.
Rock Hill, SC 29730
803.336.2230
www.hyliteledlighting.com

NEXLIGHT

1355 Mendota Heights rd.
Mendota Heights, MN 55120
651.457.800
www.nexlight.com

PHILIPS LIGHTING

200 Franklin Square Drive
Somerset, NJ 08875
732.563.3039
732.563.3325 (fax)
www.lighting.philips.com

REDBIRD LED, INC

1202 GAIL DR NE
BROOKHAVEN, GA 30319
678.733.2473
www.redbirdled.com

SIMPLY AUTOMATED INC.

6108 Avenida Encinas, Suite B
Carlsbad, CA 92008
800.630.9234
www.simply-automated.com

SOUHEGAN LIGHTING PRODUCTS

13 Columbia Dr., Unit 12
Amherst, NH 03031
877.610.4010
www.lightingoutletnh.com

SYLVANIA OSRAM

1.800.LIGHTBULB
www.osram-america.com/retrofits

TCP INC.

325 Campus Drive
Aurora, OH 44202
330.995.1384
Tcpi.com

TENMAT INC.

23 Copper Drive, Unit 3
Newport, DE 19804
800.821.3436
www.tenmatusa.com

TOPAZ

925 Waverly Ave.
Holtsville, NY 11742
800.666.2852
Topaz-usa.com

UNIVERSAL LIGHTING TECHNOLOGIES INC.

26 Century Blvd., Suite 500
Nashville, TN 37214-3683
800.BALLAST
www.universalballast.com

USA LED SOLUTIONS

330 Main St. South
Southbury, CT 06488
203-262-6420
www.usaled.com

UTILITY METALS

PO Box 9054
Louisville, KY 40209
800.627.8276
502.368.2656 (fax)
www.utilitymetals.com

VOLT LIGHTING

15486 N. Nebraska Ave.
Lutz, FL 33549
813.978.3900
www.voltlighting.com

VOLTEC POWER & LIGHTING

13885 RAMONA AVE
Chino, CA 91710
800.486.5832
www.voltecpowerlighting.com

WATT STOPPER / LEGRAND

2800 De La Cruz Blvd.
Santa Clara, CA 95050
800.875.8585
408.988.5373 (fax)
www.wattstopper.com

MISCELLANEOUS

ECM INDUSTRIES

N85 W12545 Westbrook Crossing
Menomonee Falls, WI 53051
262.293.0600
www.ecmindustries.com

MOBILE DESK

919 Brookcrest Drive
Mason, OH 45040
877.663.3375
www.mobiledesk.com

MP GLOBAL PRODUCTS LLC

P.O. Box 2283
Norfolk, NE 68702
888.379.9695
www.quietwarmth.com

RUNTAL NORTH AMERICA

187 Neck Rd
Ward Hill, MA 01835
800.526.2621
www.runtalnorthamerica.com

POWER QUALITY

CONTINENTAL CONTROL SYSTEMS, LLC

3131 Indian Rd. Suite A
Boulder, CO 80301
888.928.8663
303.444.2903 (fax)
www.wattnode.com

GENERAC POWER SYSTEMS

PO Box 8
Waukesha, WI 53187
262.544.4811
262.968.6940 (fax)
www.generac.com

GENERATOR INTERLOCK TECHNOLOGIES

3107 Lanvale Ave.
Richmond, VA 23230
804.726.2448
804.231.1984 (fax)
www.interlockkit.com

MINUTEMAN UPS

1455 Lemay Drive
Carrollton, TX 75007
972.446.7363
972.446.9011 (fax)
www.minutemanups.com

MITSUBISHI ELECTRIC

Power Products
530 Keystone Dr.
Warrendale, PA 15086
724.778.3165
www.meppi.com

TOSHIBA INTERNATIONAL

13131 West Little York Rd.
Houston, TX 77041
713.466.0277
www.tic.toshiba.com

UNIVERSAL ELECTRIC CORP.

168 Georgetown Road
Canonsburg, PA 15317
800.245.6378
Uecorp.com

SAFETY & TRAINING

AMERICAN TECHNICAL PUBLISHERS INC.

10100 Orland Pkwy. Ste 200
Orland Park, IL 60467
800.323.3471
708.957.1101 (fax)
www.americantech.net

AVO TRAINING INSTITUTE

4271 Bronze Way
Dallas, TX 75237
877.714.9787
www.avotraining.com

CALIFORNIA TURBO, INC.

10721 Business Dr.
Fontana, CA 92337
800.448.1446
www.californiaturbo.com

GEAR ARC SAFETY

600 Sandau Road
San Antonio, TX 78216
210.248.9107
geararcsafety.com

HERCULES INDUSTRIES INC.

P.O. Box 197
Prospect, OH 43342
800.345.2590
740.494.2274 (fax)
www.herculock.com

MILLER SAFETY CONSULTANTS, LTD

P.O. Box 386
Manassas, VA 20108
703.367.0404
www.electricalsafetysupply.com

RANDL INDUSTRIES

P.O. Box 14319
Spokane WA 99214-0319
509.340.0050
509.340.0051 (fax)
www.RANDL-INC.com

RECTORSEAL

2601 Spenwick
Houston, TX 77055
713.263.8001
713.263.7577 (fax)
www.rectorseal.com

TG INDUSTRIES INC.

1821 Highway 15 South
Armstrong, IA 50514
712.864.3737
Armlift.com

SOFTWARE

ACCUBID

7725 Jane St.
Concord, Ontario L4K 1X4
905.761.8800
905.761.1234 (fax)
www.accubid.com

AGILENT TECHNOLOGIES

395 Page Mill Road
Palo Alto, CA 94303
800.452.4844
888.900.8921 (fax)
www.agilent.com

FACILITY RESULTS

46337 Hamden Court
Plymouth, MI 48170
734.757.4014
Facilityresults.com

VISION INFOSOFT

1915 Aston Ave.
Carlsbad, CA 92008
800.258.7752
760.597.0339 (fax)
www.visioninfosoft.com

SOLAR POWER

ALLEARTH RENEWABLES, INC.

94 Harvest Ln.
Williston, VT 05495
802.972.9600
www.alleearthrenewables.com

NABCEP

56 Clifton County Rd. Ste. 202
Clifton Park, NY 12065
518.289.4859
www.nabcep.org

POWER ONE

3201 East Harbour Dr
Phoenix, AZ 85034
www.power-one.com

QUICK MOUNT PV

2700 Mitchell Dr., Bldg 2
Walnut Creek, CA 94598
925.687.6686
www.quickmountpv.com



When the cable doesn't fit, and you need a solution... **FAST**

GO TO THE GREAVES

ADAPTER ZONE!



All-Copper Compression Adapters

- Fabricated of wrought copper with pin of Class B conductor
- Pin fits into mechanical set-screw type lugs
- Insulating covers provided

PT-FX Shoo-Pin™ Flex-Cable Adapters

- For reliable termination of high strand flexible cable into set-screw type lugs
- In locomotive, mining, marine, and many other machinery applications
- Features the revolutionary Shoo-In™ flared barrel opening for easy cable insertion



PT-R ReduceЯ™ Reducing Adapters

- For use where cable is oversized to reduce voltage drop
- Pin fits into existing C/B or transformer lugs
- Barrel is for Class B 'building wire'



GREAVES

www.greaves-usa.com
1-800-243-1130

FOR FREE INFO, CIRCLE 40 ON READER SERVICE CARD

SCHNEIDER ELECTRIC /

Renewable Energies
132 Fairgrounds Rd.
West Kingston, RI 02892
www.xantrex.com

SEPCO

1521 SE Palm Court
Stuart, FL 34997
772.220.6615
Sepconet.com

TESTING EQUIPMENT

ADVANCED TEST EQUIPMENT

10401 Roselle St.
San Diego, CA 92121
888.554.2832
www.atecorp.com

AEMC INSTRUMENTS

200 Foxborough Blvd.
Foxborough, MA 02035
800.343.1391
508.698.2118 (fax)
www.aemc.com

ALFRA USA LLC

120 Prairie Lake Road Unit B
East Dundee, IL 60118
847.844.8900
Alfra-tools.com

AMPROBE

Everett, WA 98203
877.AMPROBE (267.7623)
www.amprobe.com

DRANETZ-BMI

1000 New Durham Road
Edison, NJ 08818
800.372.6832
732.248.1834 (fax)
www.dranetz-bmi.com

**EXTECH INSTRUMENTS/
FLIR SYSTEMS**

9 Townsend West
Nashua, NH 03063
866.477.3687
www.flir.com

HIOKI USA

6 Corporate Dr.
Cranbury, NJ 08512
609.409.9109
609.409.9108 (fax)
www.hiokiusa.com

IDEAL INDUSTRIES INC.

Becker Place
Sycamore, IL 60178
815.895.1190
815.899.7712 (fax)
www.ideal@idealindustries.com

MEGGER

2621 Van Buren Ave.
Norristown, PA 19403
610.676.8500
610.676.8610 (fax)
www.megger.com

MITCHELL INSTRUMENTS

1570 Cherokee St.
San Marcos, CA 92078
888.270.2690
800.648.2411 (fax)
www.mitchellinstruments.com

POWER PRODUCTS LLC

N 86 W 12500 Westbrook Crossing
Menomonee Falls, WI 53051
262.293.1500
www.actuant.com

REDFISH INSTRUMENTS INC.

911 Laurent Street
Santa Cruz, CA 95060
831.423.7400
redfishinstruments.com

**RELIABLE POWER METERS,
A FLUKE COMPANY**

400 Blossom Hill Road
Los Gatos, CA 95032
800.334.3666
215.752.3094
www.reliablemeters.com

**SONEL TEST &
MEASUREMENT INC.**

3350 Scott Blvd.
Bldg 55 Unit 1
Santa Clara, CA 95054
408.898.2215
www.soneltest.com

SPERRY INSTRUMENTS

N85 W12545 Westbrook Crossing
Menomonee Falls, WI 53051
262.293.0600
www.sperryinstruments.com

SUMMIT TECHNOLOGY, INC.

2246 Monument Blvd.
Pleasant Hill, CA 94523
925.944.1212
925.944.7126 (fax)
www.powersight.com

T3 INNOVATION

808 Calle Plano
Camarillo, CA 93012
805.233.3390
805.283.4507 (fax)
www.t3innovation.com

THOMAS & BETTS CORP.

8155 T&B Boulevard
Memphis, TN 38125
800.888.0211
901.252.1347 (fax)
www.tnb.com

TIMCO INSTRUMENTS, LLC

P.O. Box 100
Rockville, RI 02873
401.539.7120
www.timcoinstruments.com

TOSHIBA INTERNATIONAL CORP.

13131 W. Little York Road
Houston, TX 77041
800.231.1412
713.896.5212 (fax)
www.tic.toshiba.com

UEI TEST INSTRUMENTS

8625 SW Cascade Ave, Suite 550
Beaverton, OR 97008
1-800-547-5740
www.ueitest.com

TRUCK ACCESSORIES

MOBILE DESK

919 Brookcrest Dr
Mason, OH 45040
877.663.3375
www.mobiledesk.com

WIRE & CABLE

AFC CABLE SYSTEMS INC

272 Duchaine Blvd.
New Bedford, MA 02745
800.757.6996
508.998.1447 (fax)
www.afcweb.com

AMERICAN CONNECTORS

2006 Martin Luther King Freeway
FT. Worth, TX 76104-6303
817.535.6268
www.americanconnectoers.com

AMTEC PULLING GRIPS

30 Center Street
Plainfield, CT 05374
860.230.0006
Amtecgrips.com

ATKORE INTERNATIONAL

16100 S. Lathrop Ave.
Harvey IL 60426
800.882.5543
www.atkore.com

AUTAC INC.

25 Thompson Road
Branford, CT 06471
203.481.3444
Autacusa.com



Topaz's Snap Lock Connector
Providing Emotional Guidance

IT'S NOT ALWAYS YOUR MOTHER'S FAULT

Topaz's Friendly Tip #19

Topaz is not only the easiest company to do business with, but the friendliest too. Our dedicated sales and customer service teams are always on stand-by to offer friendly tips and guidance to your lighting and electrical fitting needs.

Technical or installation questions? Need help getting in touch with your inner child? Give us a call at 888-996-8858 or shoot us an email at friendlytip@topaz-usa.com. Someone will answer, we promise.



and friendliest
The easiest company to do business with
www.topaz-usa.com



FOR FREE INFO, CIRCLE 41 ON READER SERVICE CARD

BICSI

8610 Hidden River Parkway
Tampa, FL 33637
800.242.7405
813.903.4311 (fax)
www.bicsi.org

BRIDGEPORT FITTINGS INC.

705 Lordship Blvd.
Stratford, CT 06615
203.377.5944
203.387.3488 (fax)
www.bptfittings.com

CHALFANT MANUFACTURING CO.

411 Yerkes Rd
King of Prussia, PA 19406
610.768.8852
610.768.8858 fax
www.chalfant-obo.com

CONDUIT REPAIR SYSTEMS

761 East Enterprise Dr., Unit 1
St. George, UT 84790
800.670.1804
www.conduitrepair.com

CONDUX INTERNATIONAL

145 Kingswood Drive
Mankato, MN 56001
800.533.2077
507.387.1442 Fax
www.condux.com

CONNECTRAC

1350 Manufacturing St. Ste. 203
Dallas, TX 75207
877.480.5637
866.403.8532 (fax)
www.connectrac.com

ELECDIRECT.COM LLC

9-6311 Inducon Corporate Drive
Sanborn, NY 14132
800.701.0975
elecDirect.com

ELECTRI-FLEX

222 West Central Ave.
Roselle, IL 60172-1994
800.323.6174
www.electriflex.com

ENCORE WIRE

1329 Millwood Road
McKinney, TX 75069
972.562.9473
800.782.6475 (fax)
www.encorewire.com

FIBER SOLUTIONS INC.

17740 Hoffman Way
Homewood, IL 60430
800.743.4237
708.206.1575 (fax)
www.fsifiber.com

GARDNER BENDER

N85 W12545 Westbrook Crossing
Menomonee Falls, WI 53051
262.293.0600
www.gardnerbender.com

GENERAL CABLE

4 Tesseneer Drive
Highland Heights, KY 41076
859.572.8000
www.generalcable.com

GENSCO

53 Carlaw Ave.
Toronto, Ontario, CN M4M2R6
416.465.7521
www.genscoequipment.com

GREAVES CORP

30 Industrial Park Rd.
Centerbrook, CT 06409
800.243.1130
www.greaves-usa.com

**HITACHI CABLE
MANCHESTER INC.**

900 Holt Ave.
Manchester, NH 03109
603.669.4347
603.669.9621 (fax)
www.hcm.hitachi.com

IPEX USA

1055 Wilton Grove Rd.
London, Ontario N6N 1C9
800.463.9572
www.ipexna.com

**KEYSTONE ELECTRONICS
CORPORATION**

55 South Denton Ave
New Hyde Park, NY 11040
1-800-221-5510
www.keyelco.com

KIST CORP.

1229 Capital Drive
Addison, IL 60101
630.332.5223
Kistcorp.com

K-SUN CORP.

370 SMC Drive
Somerset, WI 54025
800.622.6312
Ksun.com

KOLBI PIPE MARKER CO.

416 Campus Dr.
Arlington Heights, IL 60004
800.499.8450
800.596.3057 (fax)
www.kolbipipemarkers.com

KRALOY FITTINGS

1055 Wilton Grove Rd
London, Ontario N6N 1C9
800.265.1815
www.kraloyfittings.com

ICC

14700 Alondra Blvd.
La Mirada, CA 90638
888.ASK.4.ICC
562.356.3100 (fax)
www.icc.com

ITOOLCO

3081 Horseshoe Bend Lane
Knoxville, TN 37931
865.670.3713
www.itoolco.com

ITW BUILDEX

13249 W. Bryn Mawr Ave.
Itasca, IL 60143
800.323.0720
630.595.3569 (fax)
www.sammysuperscrew.com

MAXIS

4838 E. Baseline Rd. Ste.131
Mesa, AZ 85206
888.266.2947
480.633.9114 (fax)
www.maxis-tools.com

NATIONAL WIRE & CABLE

136 San Fernando Rd.
Los Angeles, CA 90031
714.778.5336
www.nationalwire.com

NIEDAX-KLEINHUIS USA, INC.

7545 Pingue Drive
Worthington, OH 43085
614.888.3331
614.888.0462 (fax)
www.kleinhuis.com

ORBIT INDUSTRIES, INC.

2100 South Figueroa street
Los Angeles, CA 90007
213.745.8884
Orbitelectric.com

PARTEX MARKING SYSTEMS

1155 North Main St.
Lombard, IL 60148
630.516.0400
Partexmarker.com

PLATINUM TOOLS

668 Flinn Ave. Unit 21
Moorpark, CA 93021
805.384.2777
www.platinumtools.com

POWER & TEL

2673 Yale Ave.
Memphis, TN 38112
800.451.4381
www.ptsupply.com/quick-pull

RANDL INDUSTRIES

P.O. Box 14319
Spokane, WA 99206
509.340.0050
www.randl-inc.com

REGAL MANUFACTURING

900 S. Ajax Ave.
Industry, CA 91748
626.964.6531
626.964.3964 (fax)
www.regalfittings.com

THE SIEMON COMPANY

27 Siemon Company Drive
Watertown, CT 06795
860.945.4200
www.siemon.com

SLABACH ENTERPRISES

2148 Highway 22
Kalona, IA 52247
319.656.2226
www.slabach.com

SOKKIA

16900 W. 118th Terrace
Olathe, KS 66061
800.4.SOKKIA
www.sokkia.com

SOUTHWIRE CO.

302 Rome St.
Carrollton, GA 30117
www.southwire.com

SP PRODUCTS INC.

730 Pratt Blvd.
Elk Grove, IL 60007
800.233.8595
spproducts.com

STRIP-TEC

3700 North Commerce
FT. Worth, TX 76106
817.386.2288
www.strip-tec.com

THOMAS & BETTS CORP.

8155 T&B Boulevard
Memphis, TN 38125
800.888.0211
901.252.1347 (fax)
www.tnb.com

TOPAZ

925 Waverly Ave.
Holtsville, NY 11742
800.666.2852
Topaz-usa.com

TRIPLETT / BYTE BROTHERS

850 Perimeter Rd.
Manchester, NH 03103
800.TRIPLETT
www.triplett.com

UNDERGROUND DEVICES INC.

3304 Commercial Ave.
 Northbrook, IL 60062
 847.205.9000
 847.205.9004 (fax)
www.udevices.com

UNIQUE METAL SOLUTIONS

P.O. Box 133
 Gray Summit, MO 63039
 866.481.8899
www.rocket-rack.com

WAGO CORPORATION

N120 W19129 Freistadt Road
 Germantown, WI 53022
 800.DIN.RAIL
 262.255.3232 (fax)
www.wago.com

WEST PENN WIRE/CDT

2833 W. Chestnut St.
 Washington, PA 15301
 724.222.7060
 724.222.6420 (fax)
www.westpenn-cdt.com

WIREGUARD, INC.

P.O. Box 515
 Kimberling City, MO 65656
 417.447.2940
 417.739.9288 (fax)
www.wireguardinc.com

THE WIREMOLD COMPANY

60 Woodlawn St.
 West Hartford, CT 06110
 800.621.0049
 860.232.2062 (fax)
www.wiremold.com

ADDITIONAL DISTRIBUTORS

**EMERGI-LITE
 (A THOMAS & BETTS CO.)**

1811 Hymus Blvd.
 Dorval, Quebec H9P 1J5
 Canada
 866.857.5711
 514.685.7389 (fax)
www.emergi-lite.com

THE HOME DEPOT

2455 Paces Ferry Rd.
 Atlanta, GA 30339
www.homedepot.com

Affordable test equipment for 2020



Spitfire - Buried Low Voltage Cable Fault Locator

- ◆ Accurate
- ◆ Easy to use
- ◆ High energy output
- ◆ Proven reliability
- ◆ Compact design
- ◆ Lightweight

Wayfind'r - Impulse cable tracer

- ◆ Accurate
- ◆ Easy to use
- ◆ Connects directly to energized cables
- ◆ Distinct signal for easy tracing
- ◆ Traces direct buried and cables in conduit
- ◆ Rugged, compact design

Impulse Phaser - Cable / phase system

- ◆ Accurately identifies cables in trenches, vaults, conduits and enclosures
- ◆ Accurately identifies phases in multi-conductor cables
- ◆ Identifies jacketed, shielded, cables, even in pipe
- ◆ Easy to understand and use



TIMCO INSTRUMENTS, LLC

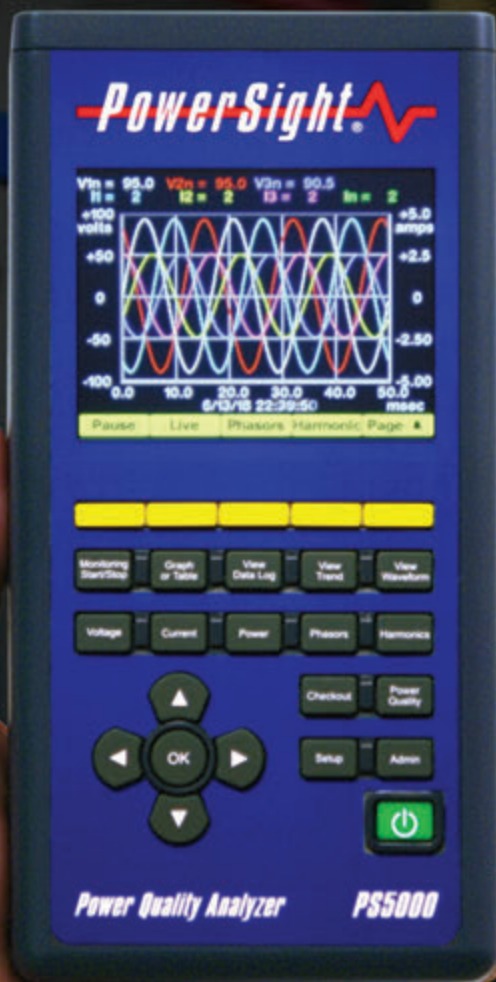
Phone: (401) 539-7120 Fax: (401) 539-6018
www.timcoinstruments.com



FOR FREE INFO, CIRCLE 42 ON READER SERVICE CARD

PowerSight®

Introducing the PS5000 Power Quality Analyzer



The latest in the
PowerSight family of analyzers



Widest range of accessories



- Compact 3-phase monitoring and analysis
- 8 triggering modes for each phase
- Virtually unlimited logging with SD card
- Redundancy in storage and communications



FOR FREE INFO, CIRCLE 17 ON READER SERVICE CARD

PowerSight by Summit Technology
2246 Monument Blvd, Pleasant Hill, CA
1-925-944-1212 • sales@powersight.com • www.powersight.com

M18 FUEL™ HOLE HAWG® Right Angle Drill

Milwaukee Tool continues to deliver disruptive innovation with the introduction of the next generation of right angle drill performance for electrical rough-in – the M18 FUEL™ HOLE HAWG® Right Angle Drill. Designed from the ground up with an upgraded POWERSTATE™ Brushless Motor, improved REDLINK PLUS™ electronics, and REDLITHIUM™ HIGH-OUTPUT Batteries, the new M18 FUEL™ HOLE HAWG® has the power to provide electricians and professional tradesmen with the fastest rough-ins and lightest right angle drill in the industry.

SPECIFICATIONS

- M18 FUEL™ HOLE HAWG® ½" Right Angle Drill Kit (2807-22)
- 1500 RPM
- All-Metal Keyed Chuck
- On-Board Chuck Key Holder
- 7.7 lbs (bare tool)
- Includes M18 FUEL™ HOLE HAWG® (2) M18™ REDLITHIUM™ HIGH OUTPUT™ XC 6.0 Battery Pack, (1) M12™ & M18™ Rapid Charger & Contractor Bag

*Also available as a bare tool (2807-20)

- M18 FUEL™ HOLE HAWG® Right Angle Drill w/ QUIK-LOK™ Kit (2808-22)

- 1500 RPM
- QUIK-LOK™ Chuck
- 7.09 lbs (bare tool)
- Includes M18 FUEL™ HOLE HAWG® w/ QUIK-LOK™, (2) M18™ REDLITHIUM™ HIGH OUTPUT™ XC 6.0 Battery Pack, (1) M12™ & M18™ Rapid Charger & Contractor Bag

*Also available as a bare tool (2808-20)



For more information, visit
www.milwaukeetool.com



Nora Lighting® Introduces Sapphire II LED, Adjustable, High Lumen Commercial Downlight

Nora Lighting expands its Sapphire II LED Series with a new adjustable, high lumen commercial model designed for high ceiling applications. The luminaire offers up to 3500 lumens and has a bias cut reflector to accommodate three specifiable beam spreads.

With 4", 6" and 8" apertures, Sapphire II features the latest CREE® COB technology for improved beam control, including spot, narrow flood and flood. The adjustable mechanism tilts 30° with 180° rotation (4" model) and 35° with 360° degree rotation (6" and 8" models). Lumen packages are offered from 900lm to 3500lm with color temperatures in 2700K, 3000K, 3500K and 4000K at 90+ CRI. The Sapphire II Adjustable reflector assembly includes the LED

optical package with heat sink and easily wires to dedicated housings manufactured by Nora. All models are cULus listed for damp locations and ENERGY STAR certified. Nora Lighting has served the lighting industry for more than 30 years and is a recognized leader in the development and introduction of LED products. Nora offers one of the industry's most comprehensive lines of LED luminaires, including: commercial, architectural and residential downlights; track and rail lighting; panels and troffers; MLS (multi-lighting systems); linear and under cabinet lighting; RLM, pendants and cylinders; tape lights; step lights; and emergency / exit signs.

For more information, visit
www.noralighting.com

Ruselectric, A Siemens Business, Offers Customized Switchgear Simulators

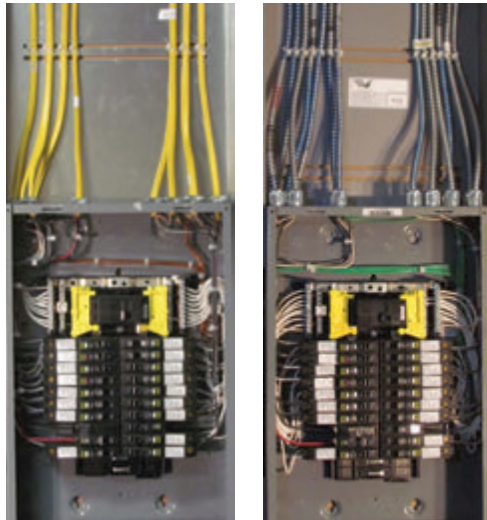
Ruselectric, A Siemens Business, a leading manufacturer of power control systems and automatic transfer switches, announces the availability of Switchgear Simulators designed to train personnel on automatic and manual operation of Ruselectric switchgear.

Customized to mimic the operation of the customer's Ruselectric® switchgear/system, Ruselectric simulators are ideal for familiarizing workers on the system and its operation and for accurately diagnosing a wide range of utility, generator, and breaker problems. The simulators can also be used to assess the impact of changes to PLC setpoints such as kW values and time delays. Using the simulators enables operators to evaluate an almost limitless number of responses to failure scenarios and use the information to develop and validate site operating and emergency procedures.

Ruselectric Switchgear Simulators are available in two versions. The Ruselectric Training Simulator allows personnel to train on the automatic operation of Ruselectric Switchgear, while the Ruselectric Advanced Training Simulator allows personnel to train on both manual and automatic operations. With the addition of hard-wired controls and interlock circuits, the simulator PLC accurately mimics full manual controls, enabling personnel to train in the comfort and safety of an office environment.



For more information, visit www.ruselectric.com



Fully Customizable ACS/Uni-Fab™ Pre-Wired Load Centers Save Time, Labor, and Storage

Simplify the materials process and reduce onsite labor in several ways

ACS/Uni-Fab™, part of Atkore International, a leading manufacturer of electrical products, has introduced fully engineered pre-wired load centers to increase efficiencies of electrical wiring projects. All cables come coiled and zip-tied to the panel bracket (optional), leaving the contractor with a highly expedited installation—the crew simply routes the branch wiring to its destination.

ACS/Uni-Fab Pre-Wired Load Centers also simplify the materials process and reduce onsite labor in several ways:

FULLY CUSTOMIZABLE

Pre-wired load centers are designed for each specific project. The ACS/Uni-Fab team works directly with the electrical contractor on exact requirements for the electrical system related to branch length, outlets, switching, etc. The load centers are built to project specifications and panel schedule, and conductors are labeled with circuit numbers for easy identification during installation.

REDUCED LABOR & MATERIAL

Load Centers are pre-wired from the circuit breaker out, with the homeruns for each circuit precut to length and terminated in the panel, reducing installation time and labor. Precut cables also eliminate the wait for components from various manufacturers, and reduce the number of large coils and reels (typically 250 ft. and 1,000 ft. respectively) that need to be transported from area to area.

SHIPPED TO SCHEDULE

The Load Centers are manufactured to adhere to National Electrical Code (NEC) and UL® standards (UL File No. E95149) in a controlled environment, with oversight by QC producers to ensure product quality. The load centers are available with metallic or non-metallic cable, and can be shipped in “stages” so that all material does not have to be stored on the jobsite at once, risking theft or damage.

ACS/Uni-Fab Pre-Wired Load Centers are especially useful for contractors and building owners looking for ways to speed up installation time on large-scale, repetitive jobs such as hotels, condos, healthcare facilities, and college dormitories.

For more information, visit www.acsunifab.com

Cementex Announces Insulating Rubber Apron Now Available with New Belt Strap

Ideal for technicians working on or around battery storage systems

Cementex, the safety tool specialists, announces the availability of its insulating rubber apron, now available with a new belt strap and is ideal for working on or around battery storage systems. The apron is a good choice for technicians who have to reach over energized conductors to perform standard maintenance. The new belt strap allows for easy cinching at the waist to help decrease the risk of the apron dragging across batteries.

With a base material of Cementex Class 0 Roll Blanket, the apron is composed of high-strength fabric reinforced Type II rubber. Highly puncture- and tear-resistant, the Cementex insulating rubber apron is also flame-resistant (self-extinguishing) and oil- and ozone-resistant.

Designed, manufactured, and tested in the USA, the apron meets strict ASTM F2320 specifications.

**For more information, visit
www.cementexusa.com**



Klein Tools'® Scout® 3 Pro Tester Starter Kit is Next Generation of VDV Testing

Klein Tools, for professionals since 1857, introduces the Scout® Pro 3 Tester Starter Kit, a versatile voice/data/video cable tester that locates and tests coax, data and telephone cables in order to verify accurate cable installations each time.

Scout® Pro 3 Tester Starter Kit (Cat. No. VDV501-851)

- Test voice (RJ11/12), data (RJ45) and video (coax F-connector) cables
- Measure cable length (up to 2,000 feet)
- Backlit LCD screen displays cable length, wiremap, cable ID and test results
- Self-Storing Test+Map™ Remote
 - Test for Open, Short, Miswire or Split-Pair faults
 - Tone cables, wire pairs and individual conductor wires (requires analog probe Cat. No. VDV500-123; sold separately)
 - Hub blink mode to identify port location on a hub or a switch
 - LanMap™ and CoaxMap™ Location Remotes (5 each) to map and ID multiple cable runs in a single step
 - Include voltage warning, shield detection, power-off and low battery indicator



“Klein Tools’ new Scout Pro 3 Tester Starter Kit is the next-generation tester, improved to make it even easier for professionals to test VDV cables,” said Karen Alpan, product manager at Klein Tools. “We took user feedback into account when designing this kit, and gave it a larger backlit display and a simplified, intuitive user interface. Combined with the improved durability, customers will find this perfect for testing VDV cables.”

**For more information, visit
www.kleintools.com**

DEWALT® Debuts Two New Charging Solutions

Designed to increase productivity and minimize downtime

DEWALT announces the 12 Amp Fast Charger (DCB1112) and 6 Amp Charger (DCB1106) for efficient charging. For use in tough jobsite conditions, these chargers allow professionals to quickly charge their DEWALT batteries and get back to work.

The 12 Amp Fast Charger has the highest charge rate supporting the DEWALT 20V MAX* and FLEXVOLT® lithium ion battery systems, charging a DEWALT FLEXVOLT® Battery (DCB609) to 80% capacity in under 45 minutes (battery sold separately). The 12 Amp Fast Charger comes with Stage 1 and Stage 2 LED indicators which communicate more to the user about the state of charge of their batteries than DEWALT chargers without these indicators. The Stage 1 LED indicator blinks until the battery is approximately 80% charged, at which point it goes to solid. Once the Stage 1 LED indicator is solid green, the Stage 2 LED indicator starts blinking until the battery is fully charged. The battery is fully charged when both lights are solidly illuminated. This prevents the user from having to remove the battery from the charger to check the state of charge. In addition, the 12 Amp Fast Charger features fan-assisted cooling, through-hole mounts, a latch for transporting the charger with a battery installed, and double insulation that meets UL Compliance.

The 6 Amp Charger offers versatility for a wide variety of charging needs and charges a DEWALT 5.0Ah Battery (DCB205) to 80% capacity in under 45 minutes (battery sold separately). Like the 12 Amp Fast Charger, the 6 Amp Charger also features the Stage 1 & Stage 2 LED format, through-hole mounts, secure latching, double insulation and is compatible with batteries in the DEWALT 20V MAX* and FLEXVOLT® systems. Unlike the 12 Amp Fast Charger, however, the 6 Amp Charger is also compatible with batteries in the DEWALT 12V MAX* system.

*With respect to 20V MAX: Maximum initial battery voltage (measured without a workload) is 20 volts. Nominal voltage is 18.

*With respect to 12V MAX: Maximum initial battery voltage (measured without a workload) is 12 volts. Nominal voltage is 10.8.



**For more information, visit
www.dewalt.com**



WAGO Introduces New Compact Power-Over-Ethernet Switch

WAGO's new compact Power-over-Ethernet (PoE) expands its line of industrial grade Ethernet switches. Just two inches wide and four inches tall, the 852-1411/000-001 PoE switch is ideal for all applications with limited space.

The wide voltage input of 24 VDC to 57 VDC, makes the 852-1411/000-001 switch a fantastic option for all PoE applications. The switch supports both PoE operation modes A and B, with all of the ports supporting 10/100/1000 Mbits/s.

This new ECO (economy) PoE+ switch is unmanaged, supplies 30 watts of power per PoE port and has an operating temperature of -10 °C to +60 °C. It eliminates the need to run both an Ethernet cable and power cables to end devices, ultimately reducing cost.

**For more information, visit
www.wago.com**

This advertiser index is compiled as a courtesy to our readers. While every effort is made to provide a complete and accurate listing of companies, page numbers and reader service numbers, the publisher is not responsible for errors.

Company	PG#	RS#	Company	PG#	RS#
AEMC INSTRUMENTS	IBC, 13	2, 12	MILLER SAFETY CONSULTANTS, LTD	5	6
BRANDON INDUSTRIES	17	15	MOBILE DESK	10	10
BREX LIGHTING	BC	3	POWERSIGHT/SUMMIT TECHNOLOGY, INC	29	17
GARDNER BENDER	IFC	1	RANDL INDUSTRIES	15	14
GENERATOR INTERLOCK TECHNOLOGIES	7	7	REDBIRD LED, INC	3	5
GREAVES USA	23	40	SP PRODUCTS INC	9	9
GRIPLOCK SYSTEMS, LLC	8	8	TCP	1	4
HERCULES INDUSTRIES, INC	14	13	TIMCO INSTRUMENTS, LLC	28	42
KOLBI PIPE MARKER COMPANY	34	43	TOPAZ	25	41
KRENZ & COMPANY	34	44	UNDERGROUND DEVICES	11	11
MEGGER	19	16			

Since 1970...

KOLBI

Pipe Marker Co.
www.kolbipipemarkers.com

20% OFF
Mention this Ad

**Voltage Markers • Wrap Arounds
Engraved Nameplates
Arc Flash Labels • Conduit Labels**

Speak to our sales team!
Phone: 800-499-8450
E-mail: sales@kolbipipemarkers.com

"KEEP IT SIMPLE WITH KOLBI"

TOP PRODUCTS Electrical 2019

WARNING Arc Flash and Shock Hazard Appropriate PPE Required

DANGER Arc Flash and Shock Hazard Appropriate PPE Required

110 VOLTS

220 VOLTS

USA

When it comes to transformer cooling fans, Krenz-Vent is the industry recognized gold standard. Our leadership position is earned through 80+ years of R&D plus our superior engineering and customer service. You can rest easy when you specify Krenz fans.

ENGINEERED TO COOL

There is no comparison.

KRENZ & COMPANY, INC.

KRENZVENT.COM • 262.235.2310 • KRENZ@KRENZVENT.COM

FOR FREE INFO, CIRCLE 43 ON READER SERVICE CARD

FOR FREE INFO, CIRCLE 44 ON READER SERVICE CARD

Monitor Your Power & Energy Usage and Costs Locally or from Anywhere in the World!

- Includes DataView® data analysis and report generation software
- Track individual harmonics and total harmonic distortion
- Ideal for compliance with NEC 220.87 requirements
- Android App available
- Track time of day usage




Android™ App
Available



FOR FREE INFO, CIRCLE 2 ON READER SERVICE CARD

www.aemc.com
sales@aemc.com

 **AEMC**[®]
INSTRUMENTS
CHAUVIN ARNOUX GROUP

BREX **LIGHTING**

LIGHTING SOLUTIONS. SIMPLIFIED

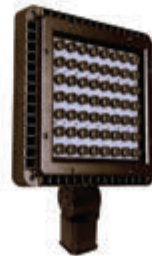
ONLINE LIGHTING. DIRECT TO YOU.



BOLLARDS



LED BULBS



LED FLOODLIGHTS



AREA LIGHTS



POST TOPS



WALL PACKS



**CONTACT US FOR DISTRIBUTOR
& CONTRACTOR PRICING**

877-273-9533
Sales@BREXlighting.com

1601 Wilmeth Road
McKinney, Texas 75069

BREXlighting.com

FOR FREE INFO, CIRCLE 3 ON READER SERVICE CARD