

SEPTEMBER 2021

Electrical Products & Solutions™

The Purchasing Guide for Electrical Contractors

www.epsmag.net

**Versatile,
Low-cost
Insulation
Resistance
Testing**



AEMC **one** SOURCE®

www.aemc.com



Cable Testers

Clamp-On Meters

Current Measurement Probes

Data Loggers

Digital Multimeters

Electrical Test Tools

Environmental Testers

Ground Resistance Testers

Leakage Current
Meters & Probes

Megohmmeters

Micro-Ohmmeters

Oscilloscopes

Power Quality/Energy
Analyzers, Meters
and Loggers

Test & Measurement (Lab)
Instruments

Thermal Imaging Cameras

Transformer Ratiometers

Our products are backed by over 125 years of experience in test and measurement equipment, and encompass the latest international standards for quality and safety.

Contact Us Today!

(800) 343-1391 • sales@aemc.com • www.aemc.com



**MADE
IN USA**



PRODUCTS, INC.

Productivity and value thru ideas

FOR SAFER BETTER FASTER JOBS

We're Proud to be the Electricians' Friend for Over 50 Years!

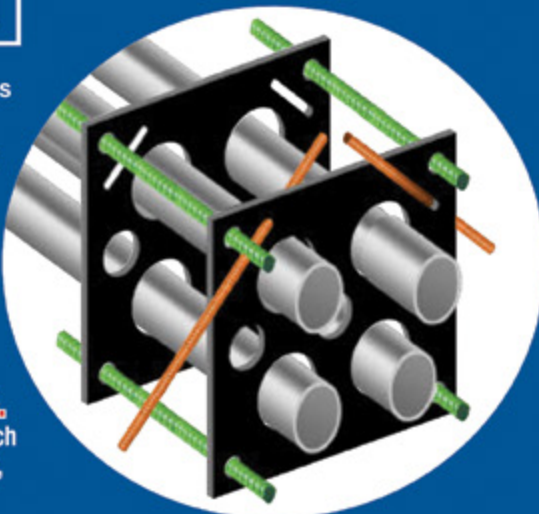
Qwik Duct Safer Better Faster

HDPE CUSTOM TEMPLATES
In Any Configuration Required

IP1



Patent
Pending



IP3b

Patent
Pending



PVC Offset

Sizes 1/2" thru 6"
*Meets Flexible Mandrel
Test Requirements*

Bore Spacers

Sizes 1/2" thru 6"
*Roll assembled conduit into
caissons and under
obstructions*

IP2



IP13A-F

Conduit Transition Couplings



PVC Schedule 40 & 80
*Transitions in Less Than
5 Minutes*

PATENT
PENDING



IP15

**End Bell
Adapter**

Schedule
40/80 PVC



PATENT
PENDING



PVC/PVC



PVC/EMT



PVC/Rigid



PVC/Liquidtight



PVC/Stainless



PVC/Alum



PVC/Flex



PATENT
PENDING

IP14a

**1 Piece
Reaming Bit**
1/2" thru 6"
Schedule 40/80

Save Cost on the Rigid Nipple, Tape & Labor
Use for Entire Job - Not Just for Repair

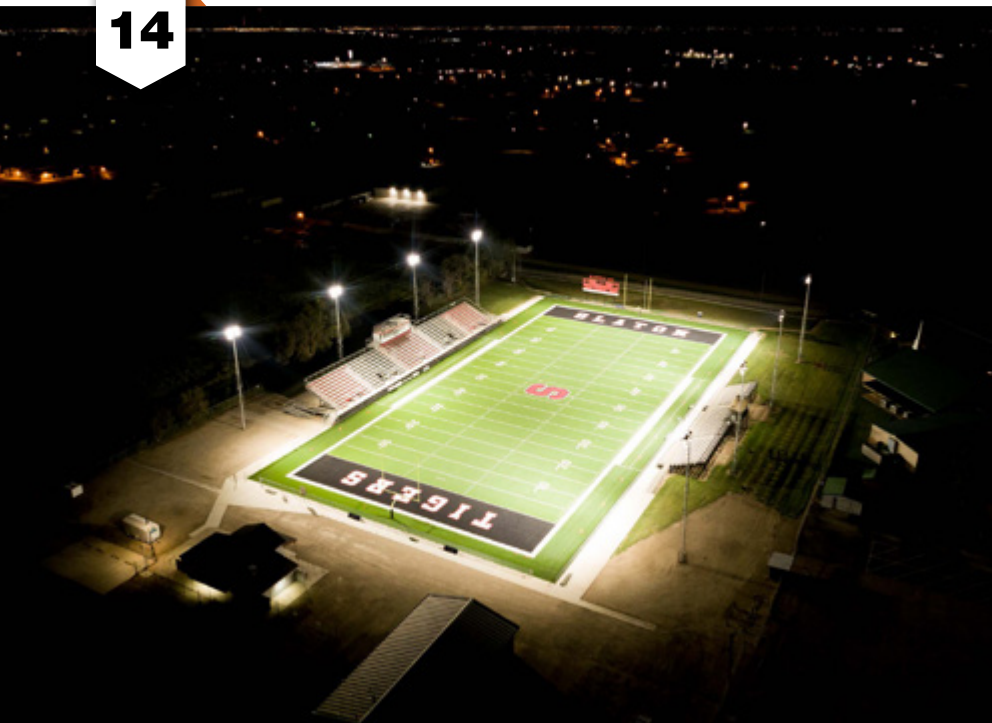
Plus More Being Invented for SAFER BETTER FASTER Jobs . . . Call With Your Ideas!



SPPProducts.com 800-233-8595 info@SPPProducts.com

CONTENTS

14



Electrical Products & Solutions™

The Purchasing Guide for Electrical Contractors www.epsmag.net

PUBLISHER

Danny J. Salchert

OFFICE MANAGER

Anita Salchert

CREATIVE DIRECTOR

Derek Gaylard

CIRCULATION DIRECTOR

Pam Fulmer

CONTRIBUTING WRITER

John Olobri



PRESIDENT

Danny J. Salchert

EXECUTIVE AND ADVERTISING OFFICES

2009 Eagle Ridge Drive
Birmingham, AL 35242

phone: 205.981.4541

fax: 205.981.4544

www.epsmag.net

danny@epsmag.net

Electrical Products & Solutions™ is published twelve times a year on a monthly basis by ABD Communications, Inc., 3591 Cahaba Beach Road, Birmingham, Alabama, 35242, USA. *Electrical Products & Solutions™* is distributed free to qualified subscribers. Non-qualified subscription rates are \$57.00 per year in the U.S. and Canada and \$84.00 per year for foreign subscribers (surface mail). U.S. Postage paid at Birmingham, Alabama and additional mailing offices.

Electrical Products & Solutions™ is distributed to qualified readers in the electrical contracting industry. Publisher is not liable for all content (including editorial and illustrations provided by advertisers) of advertisements published and does not accept responsibility for any claims made against the publisher. It is the advertiser's or agency's responsibility to obtain appropriate releases on any item or individuals pictured in an advertisement. Reproduction of this magazine in whole or in part is prohibited without prior written permission from the publisher.

POSTMASTER: Send address changes to
ABD Communications, Inc., P.O. Box 382885
Birmingham, Alabama 35238-2885

PRINTED IN THE USA

COMPANY PROFILE

- 6 PROTECT YOURSELF**
MILLER SAFETY CONSULTANTS
A LEADER IN ARC FLASH PROTECTION

COVER STORY

- 8 Versatile, Low-cost Insulation
Resistance Testing**
BY JOHN OLOBRI

CASE STUDY

- 14 AEON LED – Slaton High School
Football Field Case Study**

DEPARTMENTS

- 20 INDUSTRY NEWS**
24 NEW PRODUCTS
32 AD INDEX

ON THE COVER

Image courtesy of AEMC® Instruments





Commercial Lighting, Reimagined

TCP quality has never looked better.

New v-shaped luminaires focus light where it matters: directly onto your products.

- Lightweight, easy to install
- Sleek, contemporary design
- Uplighting prevents cave effect
- Energy-efficient, dimmable LEDs
- Uniform color spectrum
- Wide beam angles

Eliminate shadows and dark areas with the most innovative commercial lighting in the market. The QTL Series by TCP includes aisle lights, high bays, and general purpose strips – with even more products coming soon.

Innovation is LED by TCP.

Call TCP at 1-800-324-1496 or visit www.TCPi.com/QTL to learn more.





A Hybrid Event

YOU'RE INVITED TO ATTEND NORTH AMERICA'S LARGEST EVENT FOR POWER, LIGHT AND COMMUNICATION TECHNOLOGY!

Back together again in person and online. We invite the entire industry to join us in Nashville for:

- Expert speakers and topics
- Thousands of products, services and solutions
- New innovations to grow and improve your business
- The best networking with industry colleagues and leaders

Visit www.necaconvention.org to register today and make your plans to attend the NECA Show. Enter code **21ECM** for **FREE** Admission.

"I have attended every convention since 1993. From each and every convention I have attended, I have taken away at least one thing to apply to my business that has more than paid for the cost of the convention. For the life of me, I can't understand why all contractors don't attend every year."

—Phil Rose, President, Roman Electric Company



For more information on attending NECA 2021 Nashville:
T 202-991-6263 • meetings@necanet.org

NECA
NECAconvention.org



Let Voltec Handle Your Light Work

Visit us at the NECA SHOW - Booth #1244

0 - 45 - 90 Degree Positions

HEXOFLEX



LIGHTSTRINGS

BETTER • BRIGHTER • BOLDER

SCAN TO VIEW VIDEO



WORK LIGHTS



VOLTECPowerLighting.COM
1-866-4VOLTEC (486-5832)
customerservice@voltec-industries.com

Protect Yourself

Miller Safety Consultants — *A Leader in Arc Flash Protection*

Vince Miller started Miller Safety Consultants, a veteran owned business in 1999. The goal of the business was to provide cost effective safety consulting, employee training such as: confined space entry, fall protection, electrical safety and provide sales of electrical shock and flash protective equipment and fall protection equipment to businesses in the Washington DC area.

Reliance Industries provided fall protection products and much of the sales and training was on behalf of the supplier. In 2000, the owner decided to retire from his business, and Vince decided to discontinue the fall protection line of his business and concentrate more in the electrical training and products.

Vince had been a distributor for Certified Insulated Products (CIP), a manufacturer of electrical insulated tools and electrical arc flash clothing manufactured by Otex in Rochester, New York. As a distributor, Vince provided sales through his internet website and much through relationships with electrical contractors. His training was a classroom environment and was provided directly to customers but he also taught as a sub-contractor for other safety consulting companies and the

Chesapeake Safety Council in Baltimore, Maryland. In 2005, Vince partnered with Vivid Learning Systems in Cascades, Washington to provide on-line training in safe work practices.

Training in electrical safe work practices is still provided locally in the Washington DC area and as a partner with an electrical engineering firm and online. The training is based on the Occupational Health and Safety Administration (OSHA) standards and the National Fire Protection Association (NFPA) 70E standard.

Miller Safety Consultants is now a distributor for Cementex USA, Burlington, New Jersey, for insulated tools and equipment and clothing from OTEX Protective, Rochester, New York.

The majority of his sales of products are from the web-based store. Cementex is

nationally known for their quality equipment. Otex Protective is becoming more known for their quality clothing. For years, they have manufactured their products under other provider labels. Vince chose to not create his clothing line, but to sell the manufacturer product.

Vince has worked with many electrical company employees to fine-tune the clothing to be more comfortable for the user. Working closely with the manufacturer, they have made slight changes in how the cloth pattern was modified to meet final production. An example is the lightweight 40 Calorie vented hood offered by Otex.

The material is of the latest technology. The vented assembly is constructed for balance on the back of the hardhat and the airflow is 27 CFM to prevent fogging of the face shield and provide cooling to the worker. It took over a year to develop the product with the user prior to having the hood “flash tested”. This product is now standard issue with many electrical contractors.

Being a small business and having quality providers has resulted in satisfied customers for Miller Safety Consultants. Being a direct supplier for OTEX Protective, another small business means customized customer needs can be met. □

*For more information, visit
Miller Safety Consultants at:
www.electricalsafetyupply.com, email
Vince at: sales@millersafetyltd.com
or give him a call at (703)367-0404.*



The V5™ 40 Cal Ultralight Lift Front Hood System

1. V5™ High-Volume Ventilator with ArcSense Interrupter™
 - Patent-Pending ArcSense Interrupter™ shuts off airflow after an arc flash, preventing further inhalation of manganese fumes
 - 27 CFM blower fans
 - Snap-in design, removable in seconds
2. Milwaukee M12 rechargeable battery and receiver
3. 1:1 Balance: Perfectly balanced back-to-front
4. Paulson face shields and brackets
5. Hood Handle for easy removal or transport
6. LED Head Lamp included

ULTRALIGHT Premium



Protect yourself from "Arc Flash"

ARC FLASH LIFT-FRONT HOOD WITH V¹² HIGH-VOLUME VENTILATOR Compact. Powerful. Reliable

Our V¹² High-Volume Ventilator boasts an unexpectedly quiet, high output (35+ CFM) turbine fan to cool and circulate the ambient air within the hood. Fully protected beneath it's durable ABS shell and added fabric layering, the V¹² High-Volume Ventilator isn't just compliant, it's superior.



40 CAL/CM2 ULTRALIGHT CLOTHING BY OTEX

Our new dual-layer Ultralight clothing takes advantage of DuPont's® dedication to scientific advancement and Westex's® industry leading dependability. Weighing in 37% lighter than traditional HRC4 PPE, our Ultralight Clothing is the most innovative contender in the lightweight arena.

HYBRID LAYERING

Combined Fabric Weight: 14 oz

Outer Layer: DuPont® Protera
Color: Navy

Inner Layer: Westex Ultrasoft
Color: Safety Orange



CALL US TODAY

(703) 367-0404

OR VISIT OUR ONLINE ELECTRICAL SAFETY EQUIPMENT STORE
www.electricalsafetysupply.com

Versatile, Low-cost Insulation Resistance Testing

BY JOHN OLOBRI

INSULATION RESISTANCE TESTING has evolved over several decades. The fundamental principles of testing insulation resistance have not varied significantly over that time, however, the instrumentation used to measure insulation resistance has improved greatly in capability, accuracy, functionality and usability. Insulation resistance test instruments resistance testers are commonly known as Megohmmeters.

One interesting common belief is that these instruments, in fact, measure resistance. They do not. Insulation resistance testers actually measure current. They calculate the resistance using ohms law, $R=E/I$. They can do this because they know the voltage that they inject and can measure the current that flows through the device under test.

Insulation Resistance test is typically classified by the highest voltage level they are able to produce. Common ranges are 500, 1000, 2500, 5000, 10,000, 15,000 and higher. Generally speaking their higher voltage testers are used in more sophisticated applications where other variables like inductive and capacitive elements are present in the device on the test requiring longer test times to achieve effective results.

A quick review of the test process shows that there are 3 currents that are present during an insulation test. These are Capacitive charging current, Absorption current and Conduction current. A proper insulation test requires applying the test voltage long enough such that the capacitive charging currents and absorption currents are stabilized and the remaining current to be measured is the conduction current.

Conduction current, often called leakage current, is the steady current present both through and over the insulation. This is a critical measurement since an increase in conduction current over time is likely an indication of deteriorating or damaged insulation.

Large motors, long cables and other devices with

(CONTINUED ON PAGE 10)







More modern handheld insulation testers today are available with multimeter functions as well as insulation test functions, the AEMC model 6529 pictured here includes this capability.

appreciable reactive components require longer test times and thus more sophisticated insulation test equipment.

On a day-to-day basis a basic 1000 Volt handheld type insulation tester is a valuable tool to keep in one's tool bag. These instruments tend to be lower in cost and extremely easy to operate and get quick results testing devices such as power cables and small motors that are fundamentally resistive in nature with little to no inductive properties. The test time requirements in these applications tend to be short, to minutes or less and generally

require test voltages of 1000 volts or less for a handheld Megohmmeter.

More modern handheld insulation testers today are available with multimeter functions as well as insulation test functions. AEMC's model 6529 pictured here includes this capability. Multimeter functions and insulation test functions are clearly identified on the selection switch by color. The white switch positions are multimeter functions, the yellow switch positions are installation test functions making it very easy for the operator to identify. The multimeter

functions include a voltage, continuity, and resistance measurement capability. The installation test functions include selectable test voltages of 5100 to 5500 and 1000 volts. This instrument is also capable of running spot checks or time tests. A simple setup function allows selection of the time for testing a whole function. This provides the operator the ability to freeze the display assisting in documenting the test results. A blue electro-luminescent backlit display makes this device very easy to use and read in poorly lit areas. (CONTINUED ON PAGE 12)



Delivering stable power and higher efficiency

SolaHD™ SND-D Series of power supplies by Emerson ensure maximum machine availability and minimal unplanned downtime. Optimized to thrive in heavy-duty environments, SND-D power supplies deliver high power efficiencies within an ultra-compact footprint.



*SolaHD™ 10 and 20 Amp
SDN-D Power Supplies*

Available in 10 and 20 Amp models with 24 Vdc output and single-phase input, these robust power supplies support manufacturers requiring extensive hazardous location certifications, a wide operating temperature range, and quick drop-in compatibility to replace existing power supplies. Optional redundancy modules allow two SND-D power supplies to power the same load, addressing the possible loss of a unit due to failure and eliminating any risk of downtime.

Learn more at: www.solahd.com

SOLAHD™

The Emerson logo is a trademark and a service mark of Emerson Electric Co. © 2017 Emerson Electric Co.



CONSIDER IT SOLVED™

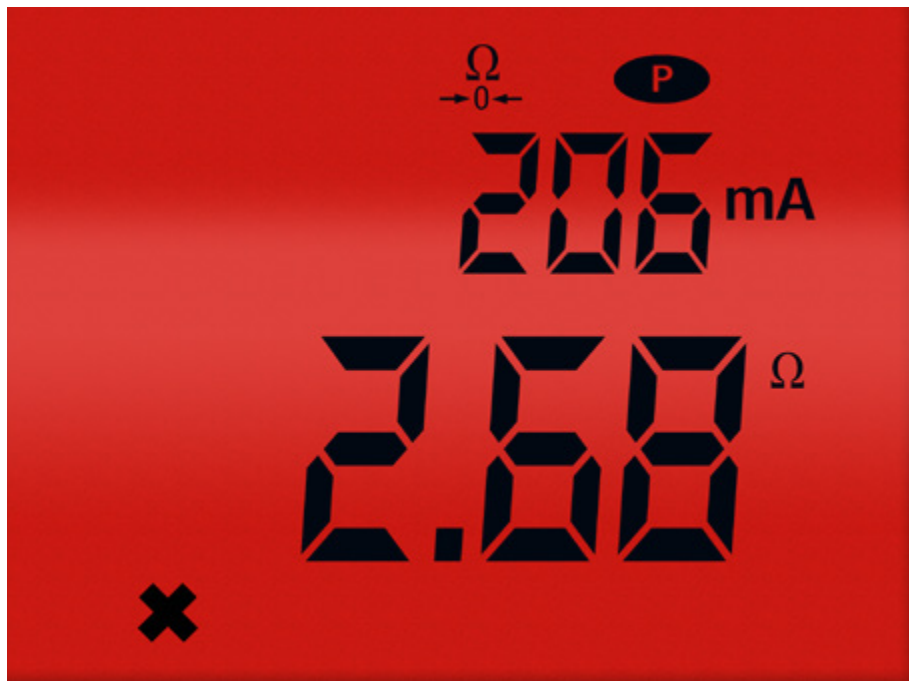
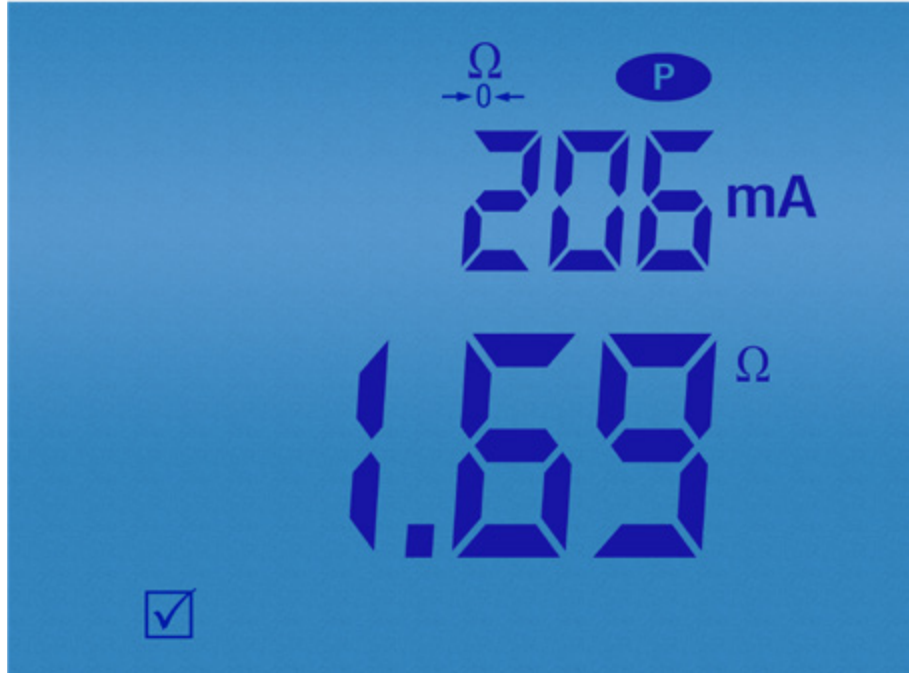
Some of the key features of this device are:

- Selectable test voltages 50, 100, 250, 500 and 1000V
- Basic DMM functions; Volts, Continuity, Resistance
- DAR and PI ratio test functions
- Dual line display to view the insulation value and real-time test voltage simultaneously in an easy-to-read format
- DMR mode - relative resistance comparison to a reference value
- 2-color backlighting easily shows alarm conditions
- Shockproof sheath for excellent handling
- Automatic power-off function to optimize the battery life
- Programmable alarm thresholds

One key feature of the model 6529 is its ability to provide a quick visual of both general resistance and insulation resistance out of tolerance conditions changing the backlight on the display to red. Thus, a quick visual go no go decision can be made. Blue display is a go, a red display is a no go. The display also indicates the test voltage and the resistance reading. As shown below during a resistance test where a reading over 2 ohms would be a faulty condition the display changed from blue to red and activated an alarm buzzer (user selectable) making it quick and easy to assist the operator in identifying the problem.

One other key feature of this versatile low cost Megohmmeter is one called Differential Mode Resistance (DMR).

This is a great asset in verifying that multiple items that should have the same resistance value are within an acceptable range.



Here the operator first measures the resistance of the reference product then presses the test button to lock the reading in as the reference. From there on subsequent measurements are compared to the reference and the delta value is displayed. If the reading is outside of the differential percentage selected by the user and stored using the set-up function, the display turns red to indicate a poten-

tial defective product as shown here.

Having a low-cost handheld insulation resistance tester in your tool bag will be a valuable and versatile asset when troubleshooting and qualifying material on the job site. It will pay for itself in no time saving you time and cost during typical installations and repair work. The AEMC 6529 is feature rich and designed for day-to-day electrical installation tasks. □

NEW Hand-held Megohmmeter/Multimeter

Economical and easy-to-use True Megohmmeter® built safe and rugged for use in the field



- Test voltage selection from 50 to 1000V (model dependent)
- Basic DMM functions; Volts, Continuity, and Resistance
- Dual line display to view the insulation value and real-time test voltage simultaneously in an easy-to-read format
- DMR mode - relative resistance comparison to a reference value
- 2-color backlighting easily shows alarm conditions
- Shockproof cover for excellent handling
- Programmable alarm thresholds



Cable Locator Transmitter / Receiver

Find opens and shorts in cables within walls, conduit or buried cables.

Renovation • Improvement • Maintenance



Model 6681

Lightmeter Data Logger

ACHIEVE THE BEST LIGHTING PERFORMANCE

- Simple-to-use
- User selectable light source: natural, LED or fluorescent
- Spectral error compensation for LED and fluorescent lighting
- Removable light sensor with expandable cord up to 48"
- Min, Max, and Average measurements stored
- DataView® graphing and analysis software
- Spot or continuous recording - up to 1,000,000 measurements stored in 8MB flash memory
- Hold function freezes the display
- Hand-held or wall mountable
- Battery or USB powered

MODEL 1110



NEW Ground Resistance Testers

The Highest Safety Rated Ground Resistance Testers

- Tests both *Grounds and Bonds*
- Stored three 62% method measurements along with average % and deviation
- *Eliminates errors* with one button connect - press - read operation
- CAT IV 600V rated *ensures operator safety*
- *Improves accuracy* with auto frequency adjustments
- Automatic continuity and resistance check of the H electrode
- Voltage and current measurement capability (Model 6424)
- IP65 dust proof, weather-resistant and flame retardant *works in all environments*



6422

6424

CALL TODAY 1 (800) 343-1391
www.aemc.com | sales@aemc.com



AEON LED – Slaton High School Football Field Case Study

Scan to
Watch the
Video



OVERVIEW

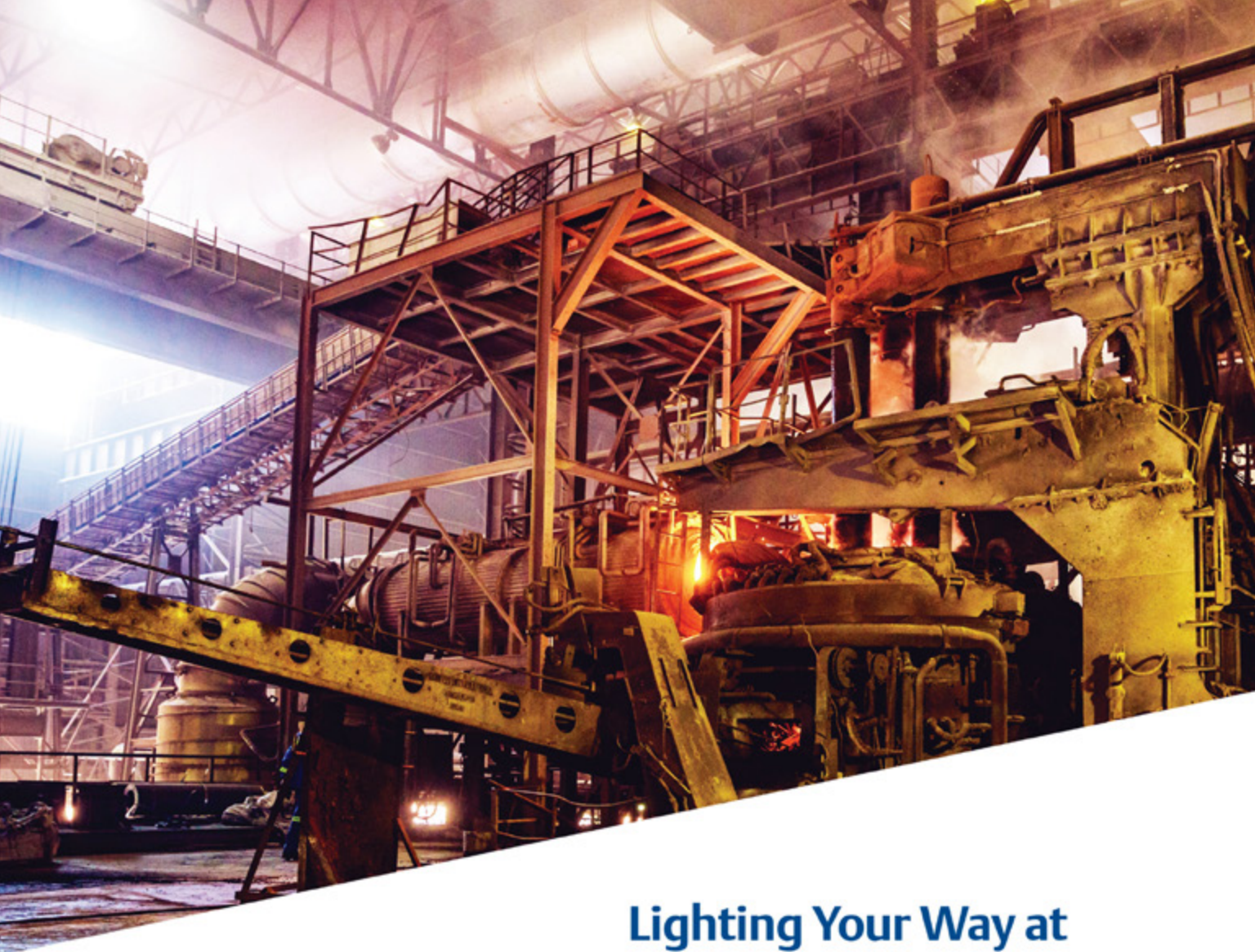
In Texas football is king and in Slaton, TX and the community there had a special treat when they kicked off the season under their new AEON LED Lights. When the lights are on the town knows there is a game going on. It gives the big game feel to the local community.

“We are grateful our admin took care of us on updating our fields with these new lights and would highly recommend these lights.” Lawrence Johnson Athletic Director/Head Football Coach Slaton ISD.

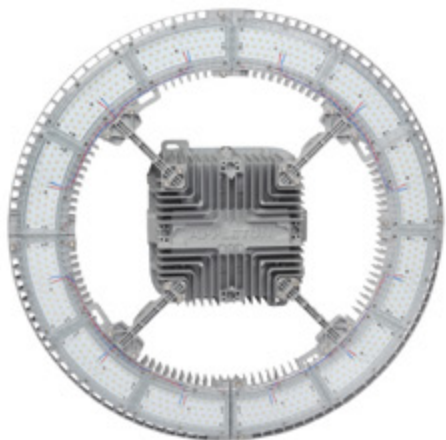
Slaton High School upgraded their football field lighting from the traditional 40 pcs. x 1500W HID lamps to the new 40 pcs. 750W AEON LED Luminaires. (CONTINUED ON PAGE 16)



750W AEON Sports Luminaire
HID Equivalent: 2,000W 105,000
Delivered Lumens



Lighting Your Way at Greater Heights



The Appleton™ IHC LED Luminaire by Emerson is the ideal solution to deliver light from mounting heights of 50 to over 100 feet. With outputs up to 90,000 lumens, an IP66 marine and wet location rating, and an ambient temperature range of -40 °C (-40 °F) to 75 °C (167 °F), the IHC was designed to meet the demands of your harsh industrial environment and lighting requirements.

Learn more at: masteringled.com

APPLETON™

The Emerson logo is a trademark and a service mark of Emerson Electric Co. © 2021 Emerson Electric Co.


EMERSON

CONSIDER IT SOLVED™

Solution

One key factor in upgrading from the old lighting system was it wasn't bright enough. Made broadcasting the games tough. AEON did a photometric study and showed that using 40 x 750W AEON LED Luminaires would best replace the 40 X 1500W Metal Halide Fixtures. AEON Luminaires are also neighborhood friendly that makes the light going onto the field and not on the surrounding properties. No light spillage or sky glow. The light goes exactly where you want it to go.

Slaton High School's Football Field is getting better quality light with 53% less energy consumption. The 750W AEON Luminaires dramatically improved the visibility on the field and for spectators. AEON Luminaires have a high color rendition showing true colors: with a CRI >85. AEON's Proprietary Glare-Free Illumination (UGR <19) makes for no uncomfortable sensation or visual discomfort for the players and spectators.

The AEON Luminaire's proprietary thermal management system allows for continuous airflow keeping the Luminaire cool in the Texas heat. AEON's Proprietary Design offers Uniform and Constant Light Levels throughout the Life of the Luminaire, with Minimal Lumen Depreciation. Additionally, with a rated Luminaire life of up to 100,000 hours, the AEON Luminaires will last over 5 times longer than the old Metal Halide Lamps. Ballasts were also eliminated from the circuit, additionally reducing maintenance costs and energy consumption.

Savings

Prior Traditional Energy Consumption

(including ballast draw factor):

40 pcs x 1,610W = **64,400W**

Current AEON Energy Consumption:

40 pcs x 750W = **30,000W**

Energy Savings: 34,400W - 53%

Before

40 pcs x 1,610W HID = **64,400W**



After

40 pcs x 750W LED = **30,000W**



Energy Savings = 34,000W



Environmental Impact

Saved
3,384,000 kWh
of Energy

Offset
4,135,240 lbs.
(1,875,713 kg)
of CO₂



which is equivalent to either:



Planting
10,320 Trees

or
Eliminating
Driving
3,759,320 Miles
(6,050,039 km)



(CONTINUED ON PAGE 18)

INNOVATIONS

Faster Safer Workspace

iTOOLco.



ALL JACK™

Increase productivity and decrease fatigue using iTOOLco's All Jack™. Install pipe, lights, cabinets, drywall, temporary dust barriers and much more with this innovative jack designed to lift and support the weight of your workpiece while you anchor it into position.

High ceilings and ladder work are not a problem for this dynamic tool. Reach from 58" to a staggering height of 13'6". The industrial gas shock ensures a snug, stable support that stays in place while you complete the installation. Once your workpiece is secured into place, simply remove the All Jack™ by releasing the shock. More powerful than a typical support pole, the All Jack's gas shock can handle your most challenging jobs.



SCAN QR

CORDLESS CANNON 3K™

Speed, Versatility, and performance are all yours with iTOOLco's Cordless Cannon 3K™. This portable 3,000 lb. puller is intuitively designed to handle all of your day-to-day wire pulls.

The built-in capstan switch automatically turns the puller on and off. Simply tug on the rope to start the pull and slack off the rope to shut it down.

Delivers dynamic performance in remote locations or areas where power is not yet available.

The high-capacity rechargeable battery is long-lasting and delivers maximum power. The Cannon 3K™ will even chew through a medium size run of 4 - 350 in 3" conduit with 4 - 90s 220' long in record time and still have half the battery life for your next pull.

SCAN QR



**CHECK US OUT
AT NECA 2021!
BOOTH #2225**

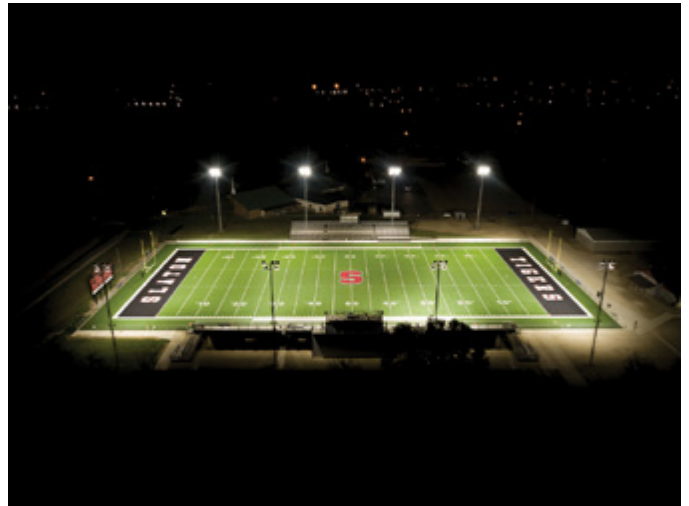
FOLLOW US:



Before



After



Conclusion

The new AEON LED Luminaires provided the LED solution that will last Slaton for years on end allowing the school to spend their time, money, and resources on more productive projects instead of changing out failed lamps and ballasts. Better Light with less energy consumption! With instant ON/OFF capabilities no more waiting for the lights to turn on. Less energy being used and more time to use the lights. Everyone is happy with the new lights, administration, students, parents, and the community. AEON LED Lighting is a win for everyone!

“The new Lights are brighter and clearer with more range. We’ve had a lot of positive comments about being able to see the field lights from anywhere in town.”
Lawrence Johnson Athletic Director/Head Football Coach Slaton ISD.

If you are looking to build a State-of-the-Art Lighting System from the Ground-Up or Update your Current Lighting System, AEON has the right solution for you and your project. □



AEONLEDLighting.com



803.336.2230



info@hylite.us

DRIVEN TO DELIVER

THE CONSOLE X



Your Total Mobile Office Solution

The Truck Console-X combines your Laptop Work Station, Radios, Speakers, Cables, Storage and Cup Holders. No Drill Installation Brackets Included.

The **Truck Console-X** is the latest innovative mobile office solution to join the Mobile Desk brand family of products. This complete control, communication and convenience Utility Truck Console is becoming the new standard for fleets of all sizes. The design of the **Truck Console-X** has originated from our years of experience working directly with the linemen, supervisors, communications, and fleets of some of the most notable utility companies in America. Loaded with standard and optional features that maximize ergonomics, productivity, and fleet/telecom standards into one Mobile Office Solution.

Screen Out™ SCREEN-DISABLER™
Blanks your screen while you drive!

Our Patented Screen Out App **Stops texting** while driving for all employees on all tablets, laptops and smart phones that run Windows, iOS or Android Operating Systems. **It's that easy!**

877-663-3375 Ext 303. www.screenout.net

Find us on:



MOBILEDESK
MOBILE OFFICE SOLUTIONS

1-877-663-3375

www.mobiledesk.com

©2018 Mobiledesk

Custom Conduit Cutting & Packaging

ELECTRI-FLEX COMPANY offers custom conduit cutting and packaging options to product orders. Customers requiring cut lengths of flexible electrical conduit can now have them cut to their required length and have the ends cleaned and deburred. Orders are then packaged and shipped direct to the jobsite. Custom conduit cutting provides the following benefits:

- Saves time on installations.
- Reduces labor and tools required.
- Reduces or eliminates conduit scrap.
- Decreases jobsite accidents that could result from improper cutting.

Distributor partners agree, “We took standard conduit that many sources can supply and turned this business into a customized solution for my customer. It saves time and money for them by cutting and packaging specifically to their needs. In the process, this item is now viewed as a cost savings item to both my company and my customer. This is truly a partnership.”

The Electri-Flex cutting division is located at its manufacturing facility in Roselle, IL. The highly trained staff and professional in-house equipment make processing custom orders fast and easy. Factory cut conduit is cut to a 90-degree angle, packaged and shipped. Customers can also choose to have the ends cleaned and deburred, leaving no jagged edges for safe handling and making pieces connector ready. Customers can request a quote through an authorized supplier or Electri-Flex representative. To learn more, visit <https://www.electriflex.com>. □



ABOUT ELECTRI-FLEX COMPANY

Electri-Flex Company, a leader in electrical conduit design and manufacture for over 65 years, produces Liqueatite®, the most diverse line of liquidtight flexible electrical conduit in the industry. The company offers custom design, engineering, quality assurance and testing capabilities. For more information on Electri-Flex Company, call (630) 529-2920 or (800) 323-6174; fax: (630) 529-0482; e-mail: mktg@electriflex.com; visit: www.electriflex.com; or write: 222 West Central Avenue, Roselle, IL, 60172-1994.



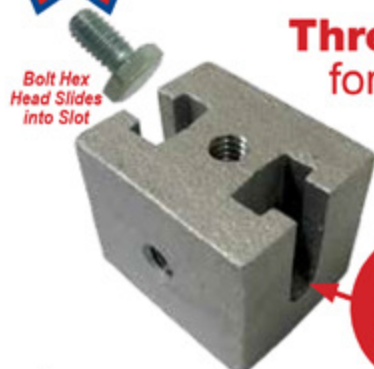
**Strong
ALMAG 535
Material**

4-Conduit Block Support From Only One Rod



PATENTED

**Threaded Block OR Threadless Block
for Vertical Rod**



For Vertical Rod 1/4" or 3/8"

Specify bolt size 1/4" or 3/8" for the conduit clamp

ST=(side thread) 1/4" or 3/8"

**Standard
Slots 1/4"**

**3/8" Available
Upon Request**



**Support
Up Thru 4
Conduits With
1 Support**

THREADED BLOCK

1/4 inch rod = Cat# TBT25-ST25

1/4 inch rod = Cat# TBT25-ST38

3/8 inch rod = Cat# TBT38-ST25

3/8 inch rod = Cat# TBT38-ST38

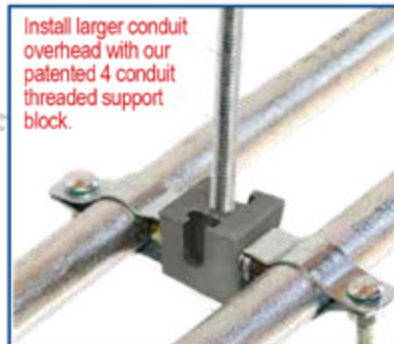
NON-THREADED BLOCKS

1/4 inch rod = Cat# TBT25-NT-ST25

1/4 inch rod = Cat# TBT25-NT-ST38

3/8 inch rod = Cat# TBT38-NT-ST25

3/8 inch rod = Cat# TBT38-NT-ST38



**New
Block**

**AVAILABLE
SOON**

**For Vertical Rod
1/4" or 3/8"**

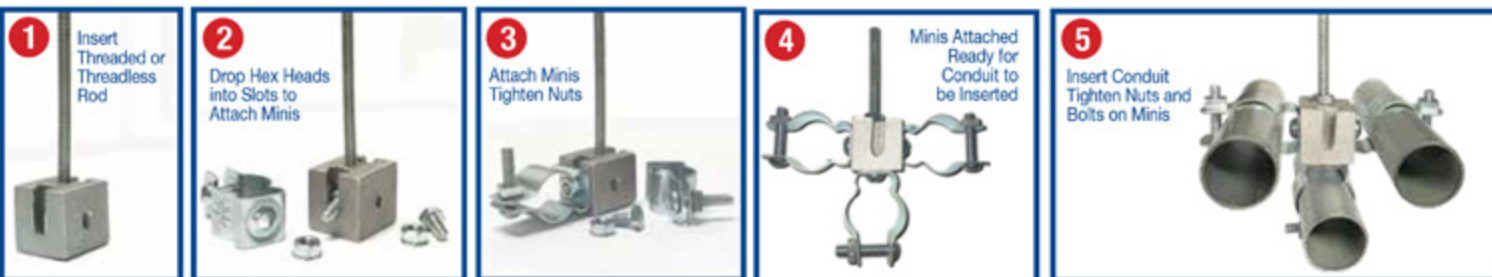


**4 threaded holes on
4 sides (no slots)**

Specify bolt size 1/4" or 3/8" required for the conduit clamp

PATENTED

FAST & EASY TO INSTALL



Customer must satisfy all codes and owners' specifications.

SP PRODUCTS, INC
Productivity and value thru ideas



**PATENT PENDING
PATENTED**

LABELS APPLY TO PRODUCTS ONLY WHERE SHOWN ABOVE

730 Pratt Boulevard • Elk Grove Village, IL 60007
P: (847) 593-8595 • F: (847) 593-8629 • Toll-free (800) 233-8595
E: info@spproducts.com • www.spproducts.com

IP19-20



Leviton Promotes Ron Ridenour to Vice President, Retail Sales & Marketing

Ridenour will succeed current vice president, Carol Lynch, who is retiring in December 2021 after over 40 years of service

Leviton announced today the promotion of Ron Ridenour to vice president, retail sales and marketing, with an effective start date of September 7, 2021. Ridenour will be assuming this role after it has been capably held for the past 16 years by Carol Lynch, who has announced her retirement effective December 30, 2021.

Lynch began her career with Leviton in 1977 in marketing and progressed through many positions in retail before taking on the vice president of retail sales and marketing role in 2005. Since then, Lynch has led the retail sales and marketing teams with a focus on merchandising superiority and providing enhanced value to customers. During her tenure, Lynch led significant growth for Leviton's retail channel, emphasizing a culture of excellence.

"Over the course of her career with Leviton, Carol has been a driving force for excellence, innovative thinking, and leadership in all areas of her work," said



"Since joining Leviton more than 15 years ago, Ron has played a key role in contributing to the company's growth."

DARYOUSH LARIZADEH, PRESIDENT
AND CHIEF OPERATING OFFICER
AT LEVITON

Daryoush Larizadeh, president and chief operating officer at Leviton. "In the two decades that I have had the pleasure of working with her, Carol has exemplified our mantra to make it happen, leading to success for her, our employees, and our company within the industry. Whether it's driving growth for the retail channel or building a customer-minded culture of excellence, Carol has certainly left a lasting mark on our organization."

Ridenour began his career at Leviton as an account representative in 2006, and since then, has had extensive experience in the retail channel and the home

improvement industry. He has demonstrated his sales leadership and expertise having served as director of sales for retail and director of sales for The Home Depot.

"Ron brings a strong understanding of Leviton customer needs," said Daryoush Larizadeh. "Since joining Leviton more than 15 years ago, Ron has played a key role in contributing to the company's growth. Both Carol and I are excited and confident to have him lead our retail sales and marketing organization."

For more information, please visit <http://www.leviton.com>.

ABOUT LEVITON

Every day, Leviton is engineering possibilities that make the future happen, meeting the needs of today's residential, commercial, and industrial customers globally. From electrical, to lighting, to data networks, and energy management, Leviton develops thoughtful solutions that help make its customers' lives easier, safer, more efficient and more productive. Driven by its commitment to its customers, the ingenuity of its employees and the safety and quality of its products and solutions, with Leviton, the FUTURE IS ON. For more information, visit <http://www.leviton.com>, www.facebook.com/leviton, www.twitter.com/leviton, or www.youtube.com/Levitonmfg.



REPAIR CONDUIT IN A SNAP!

No Tape • No Plastic Straps • No Metallic Straps

NO KIDDING!

*Designed especially for power, communications
and fiber optics.*



STEP 1
Remove damaged
conduit



STEP 2
Cut split duct
conduit to fit



STEP 3
Snap in
place

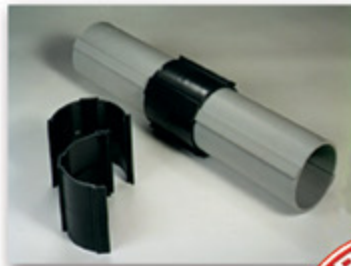
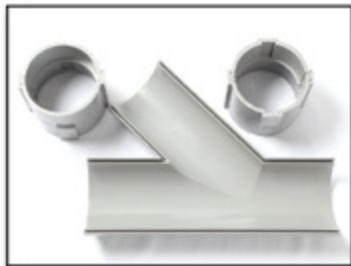
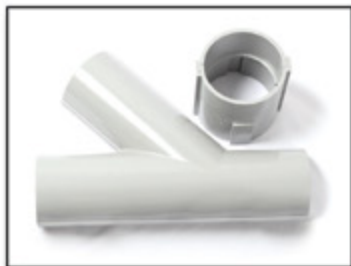


STEP 4
Attach
adapters



STEP 5
Finish job in
record time

"The World Leader In Split Conduit Products"



Conduit Repair Systems, Inc.

The World Leader In Split Conduit Products



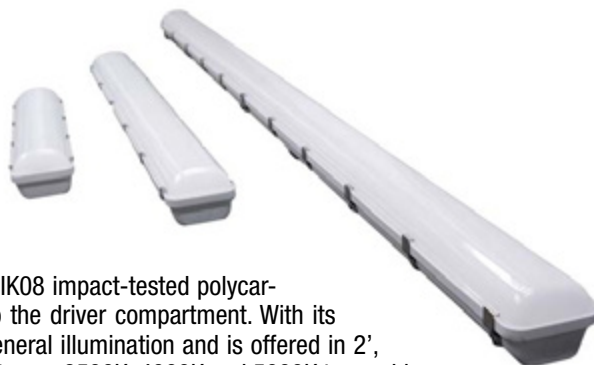
800.670.1804 • 435.673.8724 fax • crs@conduitrepair.com • www.conduitrepair.com

Enhanced LED Linear Vaportight Now Available from Barron Lighting Group

Powered by Barron Lighting Group, Trace-Lite indoor and outdoor commercial and industrial lighting announces the addition of NSF certification, NEMA 4X rating and a 2' model to the VPA Series of color switchable LED linear vaportights.

"Now NEMA 4X Rated and NSF Certified, our VPA Series is the ideal solution for indoor and outdoor covered spaces that require protection from dust, dirt and water including Food Zone and Splash Zone locations," said Heather McCune, Vice President, Sales Operations of Barron Lighting Group.

The VPA Series LED linear vaportight features robust construction with an IK08 impact-tested polycarbonate housing designed for easy installation with direct, toolless access to the driver compartment. With its UV-stabilized frosted polycarbonate lens, the VPA Series offers impressive general illumination and is offered in 2', 4' and 8' configurations. Internal switches allow the user to select the CCT between 3500K, 4000K and 5000K to provide project flexibility. An optional integral microwave sensor, centered behind the lens, provides two or three step/level dimming as well as light thresholds/daylight harvesting capability. A battery backup option provides emergency egress lighting for 90 minutes. This unit is rated for Food Zone, Splash Zone: Equipment surfaces that are subject to splash and food spillage during operation of the equipment as well as Non-Food Zone. The VPA is cULus Listed, NEMA 4X Rated, NSF Certified, and DesignLights Consortium® (DLC) Qualified.



For more information, visit
<https://bit.ly/3jnPSki>

DEWALT® Launches New TOUGHSERIES™ Hand Tools, Redefining The Standard Of Tough

DEWALT To Roll Out Most Durable and Innovative Tapes, Hammers and Screwdrivers To-Date, As Well As Sustainable TOUGHSERIES™ Tape Packaging

DEWALT announces TOUGHSERIES™, a new line of premium hand tools representing the most durable hand tools from DEWALT yet. Designed for heavy-duty use in the most demanding applications, the TOUGHSERIES™ portfolio will launch with tapes this summer followed by hammers and screwdrivers in the fall. TOUGHSERIES™ tapes are designed with housing that survives a 100 ft. drop**, TOUGHSERIES™

hammers are 5X more durable*** than previous models, and TOUGHSERIES™ screwdrivers tout 10X more corrosion resistanceΔ than previous models – all redefining the standard of tough.

TOUGHSERIES™ tape measures are built to last and feature an ultra-rugged housing that survives a 100 ft. drop**, as well as a durable coating that protects the entire length of the blade, and a 6 in. Rip-Shield™ blade coating for improved hook connection and long life. The new TOUGHSERIES™ tape is the first DEWALT® tape measure with double sided print, providing added versatility for vertical and overhead measuring from any angle. Each TOUGHSERIES™ tape includes a removable magnet utilizing patented hook connection technology as well as a contoured case design for improved grip and

control. Available in 16 ft. (DWHT36916S), 25 ft. (DWHT36925S), and 35 ft. lengths (DWHT36935S), TOUGHSERIES™ tapes have up to 17' max reach that is straighter and stronger than previous models allowing users to measure large spans while working alone.

DEWALT is also proud to announce new sustainable TOUGHSERIES™ tape packaging. Designed to reduce the amount of plastic packaging introduced to the waste stream, DEWALT is implementing an eco-friendly clip-card estimated to eliminate 10,000 lbs. of PVC per year, or the equivalent of more than 400,000 0.5L water bottles that will be diverted from landfills and oceans. Sustainable TOUGHSERIES™ tape packaging is a significant step towards Stanley Black & Decker's corporate pledge to make all packaging reusable, recyclable or compostable by the year 2025.

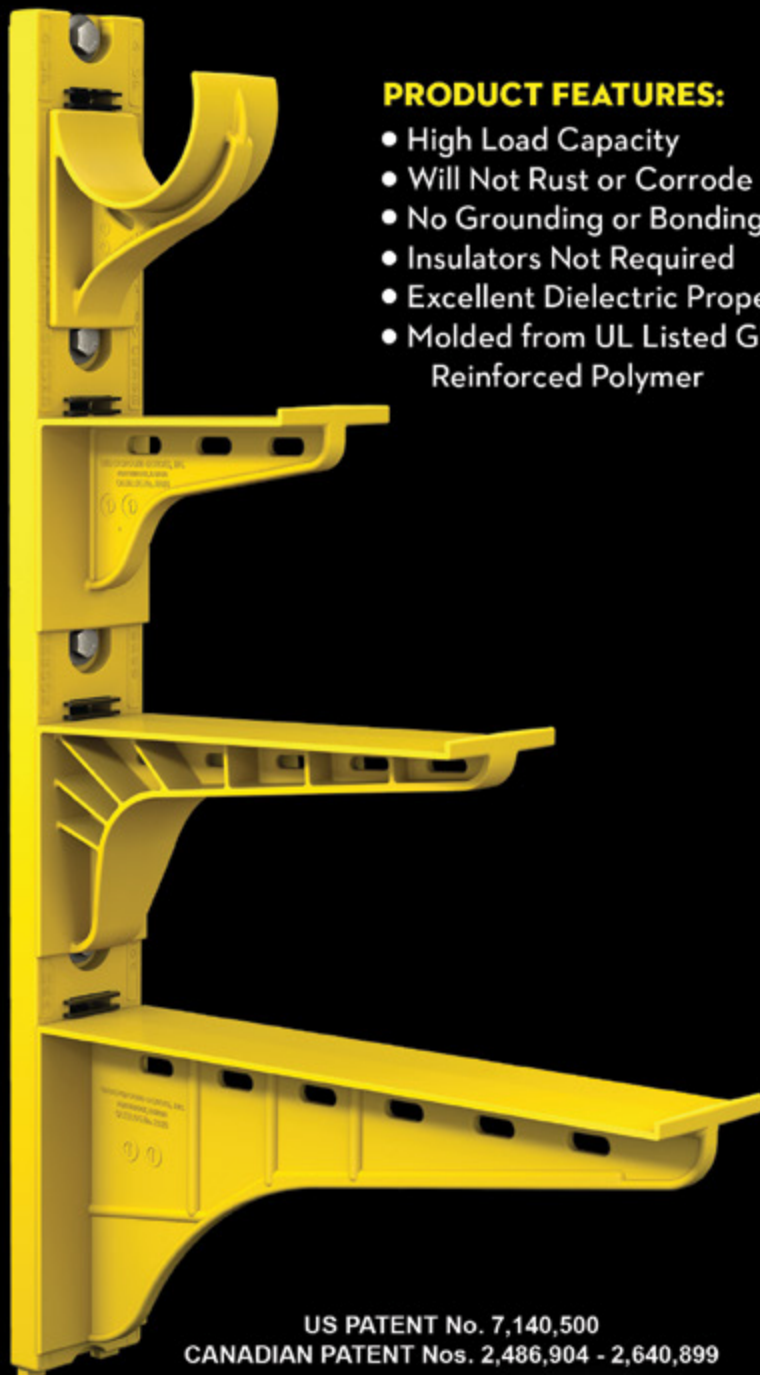


For more information, visit
www.DEWALT.com

The Heavy Duty Nonmetallic CABLE RACK



For Power and Communications Manholes And Vaults



PRODUCT FEATURES:

- High Load Capacity
- Will Not Rust or Corrode
- No Grounding or Bonding
- Insulators Not Required
- Excellent Dielectric Properties
- Molded from UL Listed Glass Reinforced Polymer



HDL Arm Lock shown with
RA04 Arm and CR36-B Stanchion



3HDS - 3" throat saddle shown with
a cable secured by cable ties.



RA08 - 8" arm shown with three
cables secured by cable ties.

US PATENT No. 7,140,500
CANADIAN PATENT Nos. 2,486,904 - 2,640,899

UNDERGROUND DEVICES
INCORPORATED



420 ACADEMY DRIVE
NORTHBROOK, IL 60062
Phone: 847-205-9000 • Fax: 847-205-9004
Website: www.udevices.com

Emerson LED Emergency Exit Lighting Helps Manufacturing Plants Offer Safer Workspaces

New Exit Signs Rated for Hazardous Industrial Locations

Building on its leadership in providing advanced hazardous location electrical equipment, Emerson Automation Solution today announced the availability of the Appleton HEX series LED Hazardous Location Exit Sign, rated for C1D2- areas. The signs are specifically designed to provide bright and reliable emergency illumination during a crisis involving loss of power, as well as to perform as standard signage marking escape routes and exits in hostile industrial environments, such as oil refineries, underground tunnels, wastewater treatment centers and other facilities where flammable gases and vapors are present.

Appleton HEX series LED Hazardous Location Exit Signs come prewired for fast installation, offer 6 kV of surge protection standard, and are dual voltage to run at 120V or 277V. Equipped with a 4.8V rechargeable nickel cadmium battery, the signs provide failsafe emergency operation for 90 minutes or more upon loss of AC power. Self-diagnostic circuitry tests operational conditions monthly, bi-annually or annually. If a failure is detected, visual status on the LED indicator lights up immediately to alert plant maintenance to perform repairs. Diagnostics testing can also be prompted on-demand using the included magnet flash.

Today's LED technology is ideal for Appleton HEX series LED Hazardous Location Exit Signs. Capable of years of maintenance-free operation, LEDs promise unparalleled energy-efficiency to achieve a far lower cost of operation compared to typical self-illuminated exit markers. Additionally, LEDs do not use glass enclosures or filaments, and are therefore resistant to vibration and impact from heavy machinery. And in industrial facilities subject to fluctuations in ambient temperatures, LEDs perform better than traditional lighting sources since this technology creates little heat and performs even at temperatures well below freezing. By leveraging LEDs, Appleton HEX series LED Hazardous Location Exit Signs provide the necessary brightness to be visible through smoke, darkness and fog to give workers greater situational awareness when identifying the location of exits.

Appleton HEX series LED Hazardous Location Exit Signs are UL Listed for use in Class I, Div. 2 (C1D2) applications and in wet locations. Walkways, exit ramps, stairs and aisles are typical installation locations.



**For more information, visit
www.masteringled.com**



Leviton Introduces New Decora® Weather-Resistant Receptacle

The latest addition to the Leviton line of weather-resistant solutions.

Leviton today announced its new Decora Weather-Resistant Receptacle, expanding their line of weather-resistant devices to include the company's signature brand. The new receptacle is available in a 15A model and is tamper-resistant for added child safety, providing protection against injury with a built-in shutter mechanism which helps to prevent foreign objects from being inserted into outlets.

The Leviton Decora Weather-Resistant Receptacle is built to withstand exposure to the elements and meets the requirements of NEC® Section 406.8 and UL standards to help ensure safety and protection outdoors. The receptacle is made with UV stabilized materials and corrosion resistant materials that stand up to the harsh elements of the outdoors.

"All residential receptacles installed outdoors are required by the National Electrical Code® to be weather-resistant. Pair with a Leviton While-in-Use Cover and install on a GFCI protected circuit to meet Code requirements, and make time spent working outdoors and enjoying outdoor activities safer for the entire family," said Melissa Cinelli, senior product manager, Leviton. "Install weather-resistant receptacles in the front and rear of the home and on patios, decks and near pools and hot tubs."

The Leviton Decora Weather-Resistant Receptacle is available in White and is backed by a two-year limited warranty.

**For more information, visit
www.leviton.com**

Fire Rate Low Profile LED Downlights

IN SECONDS

INTRODUCING THE NEW

FF109-250 AND FF109-200

Fire Rated LED Light Covers



Designed for **modern**, low-profile LED downlights

The ideal solution for **retrofits** and new construction



Fits in **small spaces** • Installed in **seconds** • 60 minute **fire tested** • Fits up to **6"** tall downlights

Fluke brings its history of test and measurement leadership to the solar industry

The new Fluke IRR1-SOL Solar Irradiance Meter makes the critical measurements needed for installing, testing, and maintaining photovoltaic systems

New energy technologies, like solar, require specialized test tools to efficiently provide critical measurements. The new Fluke IRR1-SOL Irradiance Meter has been designed from the ground up to simplify the installation, commissioning, and troubleshooting of photovoltaic arrays by measuring irradiance, temperature, inclination, and direction of the solar array with a single handheld tool.

The simple user interface, instantaneous solar irradiation measurements, and built-in temperature sensor make it easy to meet IEC 62446-1 requirements for testing, documenting, and maintaining photovoltaic systems. Additionally, the integrated compass and inclination sensor allow technicians to quickly measure and document roof and site orientation, pitch, and panel tilt while surveying, installing, or adjusting an installation.

“The Fluke IRR1-SOL Irradiance Meter fills a pressing need for dedicated test tools to quickly and easily verify and document the performance of photovoltaic installations,” said Allison Wyatt, global product marketing manager. “It’s just the latest in Fluke’s portfolio of test tools that speed the installation and maintenance of photovoltaic arrays.”

The Fluke IRR1-SOL Solar Irradiance Meter is ideal for:

- Photovoltaic system design and surveying — to find the expected production at a site, technicians must determine the solar resource while taking shading into account. The Fluke IRR1-SOL measures the actual solar irradiance (Watts/m²) and shading at the site to develop a baseline.
- Measuring — once the system is installed, the IRR1-SOL ensures it is operating as designed by taking the critical measurements needed when determining its power output.
- Comparing and diagnosing — even when installed correctly, a photovoltaic system may not be producing the expected electrical output. The IRR1-SOL confirms the correct amount of irradiance energy is being received to generate the DC voltage that is fed into the inverter.



**For more information, visit
www.fluke.com**



Klein Tools®' New Headlamp Provides Protection in Hazardous Situations

Klein Tools, for professionals since 1857, introduces the Intrinsically Safe LED Headlamp, designed and tested to operate in environments with unseen volatile fumes, fine dust and hazardous materials that could lead to risk of explosions.

Intrinsically Safe LED Headlamp (Cat. No. 60156)

- Attaches directly to Klein Hard Hats & Safety Helmets with exclusive Klein accessory mounts
- Standards tested: UL913 7th edition (US/CAN), CAS.22.2 No. 157-92, Reaffirmed 2018, CLASS I, DIV 1&2, GRP ABCD; CLASS II, DIV 1&2, GRP EFG; CLASS III; TEMP CODE T4
- High-Low Modes/ Lumens/ Runtime: Low – 75 lumens, 12 hours; High – 216 lumens, 5 hours
- IP67 rated – waterproof and dust proof; drop protection tested to 6.6ft (2m)
- Bracket tilts up to 70 degrees on Hard Hats; (max 90 degrees)
- Includes 2.5mm hex key for covered battery compartment; powered by 3x AAA batteries (included)

“Safety is a priority on every jobsite, and that is something that was a main focus in designing the Intrinsically Safe LED Headlamp,” says Shantanu Deshpande, senior product manager at Klein Tools. “This headlamp was designed specifically to operate in hazardous environments where standard headlamps cannot, and where unseen volatile fumes or fine dust can be hard to detect. With bright LEDs, long run times and a waterproof and dust proof construction, this headlamp delivers the high level of performance Klein tools users are accustomed to.”

**For more information, visit
www.kleintools.com/new-products**

First there was 4 square...
and now the **REVOLUTIONARY 5 Square® Box!!**

You've struggled with 4 Square boxes for years - you know how small, cramped and time consuming they are. Finally, there is a solution that allows you the space you have always needed.

The **5 Square®** Boxes (5" x 5" x 2-7/8") provide up to 88 in³ of interior volume which more than doubles that of most existing boxes on the market.

Create a robust and unrivaled infrastructure for the life of your facility with the **5 Square®** Products!

Fire Signal



- TWICE THE VOLUME AS MOST BOXES
- SAVE LABOR...INCREASE PROFITS
- ELIMINATES TROUBLESHOOTING TIME AND COST
- FULLY UPGRADEABLE SYSTEM
- SPECIFIED BY ENGINEERING FIRMS, HOSPITALS, UNIVERSITIES & GOVERNMENT AGENCIES
- AVAILABLE IN ZINC OR RED

Telecommunications



- INTEGRAL CABLE MANAGEMENT
- SAVE LABOR...INCREASE PROFITS
- FACILITATES MIN. BEND RADIUS REQUIREMENTS
- SUPPORTS CURRENT AND EVOLVING SYSTEMS
- SUPPORTS PoE PLUS
- SPECIFIED BY ENGINEERING FIRMS, HOSPITALS, UNIVERSITIES & GOVERNMENT AGENCIES



Milwaukee® Delivers Rust Resistance with new Stainless Steel Fish Tapes

Milwaukee Tool adds to their fish tape lineup with new 120' and 240' 1/8" Stainless Steel Fish Tapes. Joining the existing Steel and Polyester Fish Tapes, Stainless Steel offers extended tool life in high-humidity working environments with natural corrosion and rust resistant properties.

The new Stainless Steel Fish Tapes feature a low friction case to provide smooth payout and easy rewind, along with high visibility laser-etched markings to help accurately measure depth and position. All Milwaukee fish tapes have a Square Inner Grip with an ergonomic surface, allowing users to securely grip the tape during pay-out and reel-in. A multi-position handle increases a user's ability to comfortably hold the fish tape in any jobsite scenario. Both stainless steel solutions have a Reinforced Welded Anti-Catch Tip, delivering added durability and easier fishing.

Along with all Milwaukee fish tapes, the new 120' and 240' Stainless Steel solutions are backed by a Limited Lifetime Warranty. The addition of the Stainless Steel Fish Tapes demonstrates Milwaukee Tool's continued commitment to the Electrician.



**For more information, visit
www.milwaukeetool.com**

Gain Greater Visibility of Lighting Assets with New Appleton Mercmaster Connect LED Luminaires and Emerson Plantweb Insight Software

Wirelessly Networked Lighting Solution Accelerates IIoT Journey to Improved LED Energy Efficiency, Lower Maintenance, Higher Productivity

Emerson Automation Solutions announced today a new version of its Appleton™ Mercmaster™ LED hazardous location luminaire that is fully compatible with the Emerson Plantweb™ digital ecosystem, a scalable and secure Industrial Internet of Things (IIoT) portfolio of transformational technologies, software and services. The breakthrough new luminaire, dubbed the Appleton Mercmaster Connect, can be linked wirelessly to Plantweb Insight™ software via Emerson WirelessHART™ network technology. This innovative solution provides facility managers with continuous monitoring of their LED lighting with real-time insights gained into sustainability goals, diagnostics and illuminance levels from any remote location, at dramatically lower costs as compared to wired alternatives, with faster installation time and minimal disruption to plant operations.

"The Appleton Mercmaster Connect LED Luminaire is the next step in digital transformation for Appleton hazardous location lighting," said Edward Brann, Connected Solutions Product Manager for Emerson. "With quick and accurate data analysis made possible by Plantweb Insight, it is much easier to prioritize maintenance and identify potential hazards or failures that may put the safety, reliability, and compliance of a facility at risk. No matter how many Mercmaster Connects are in a facility, users can instantly make sense of all their lighting data to drive overall enterprise profitability. Plantweb Insight automatically and strategically interprets data to enable measurable performance improvement in the areas of lighting reliability, safety and sustainability."

When a WirelessHART network is installed in a facility, a Mercmaster Connect will join it using the gateway's network and join keys. Mercmaster Connect strengthens the network for other devices by creating additional data pathways back to the gateway. Even without a network, the luminaire's integrated Appleton Wireless Motion Sensor will detect motion for smart illumination of the area. If no motion is detected, the Mercmaster Connect either will turn off or dim down lighting to a pre-set level of intensity. The Time Out delay and dimming output can be programmed using an Emerson AMS TREX Device Communicator on the workbench, eliminating the danger of using ladders or scaffolding to reach luminaire controls. Also available, the Plantweb Insight Connected Lighting™ app allows a facility manager to commission Mercmaster Connect luminaires for controls such as occupancy detection, daylight harvesting and scheduling, taking the pressure off so they can focus on more productive tasks.



**For more information, visit
www.masteringLED.com**

*Making perfect connections has never been simpler. In fact, now it's a **SNAP!***

NEW *SNAP Connectors* from Greaves. A revolutionary compression connector concept that gets the job done with just a few turns of a standard wrench!

- ▶ Time-saving, easy installation
- ▶ Superior pull-out strength and conductivity
- ▶ No bulky and costly tools and dies



GREAVES


860-664-4505 | 800-243-1130 | www.greaves-usa.com | info@greaves-usa.com


This advertiser index is compiled as a courtesy to our readers. While every effort is made to provide a complete and accurate listing of companies and page numbers, the publisher is not responsible for errors.

Company	PG#	Company	PG#
2021 NECA SHOW	4	MOBILE DESK	19
AEMC INSTRUMENTS	IFC	POWERSIGHT / SUMMIT TECHNOLOGY INC	IBC
AEMC INSTRUMENTS	13	RANDL INDUSTRIES	29
APPLETON / EMERSON	15	SOLAHD / EMERSON	11
CONDUIT REPAIR SYSTEMS	23	SP PRODUCTS INC	1
ELECTRI-FLEX COMPANY	BC	SP PRODUCTS INC	21
GREAVES USA	31	TCP	3
iTOOLco	17	TENMAT INC	27
KRENZ & COMPANY	32	UNDERGROUND DEVICES	25
MILLER SAFETY CONSULTANTS, LTD	7	VOLTEC POWER & LIGHTING	5

When it comes to transformer cooling fans, Krenz-Vent is the industry recognized gold standard. Our leadership position is earned through 80+ years of R&D plus our superior engineering and customer service. You can rest easy when you specify Krenz fans.

ENGINEERED TO COOL
There is no comparison.



 **KRENZ & COMPANY, INC.**

KRENZVENT.COM • 262.255.2310 • KRENZ@KRENZVENT.COM

Electrical
Products & Solutions™
The Purchasing Guide for Electrical Contractors www.epsmag.net

**COME SEE
US AT
BOOTH
#2148**


NECA
NATIONAL ELECTRICAL CONTRACTORS ASSOCIATION

PowerSight®

Introducing the PS5000 Power Quality Analyzer

The latest in the
PowerSight family of analyzers



Widest range of accessories



- Compact 3-phase monitoring and analysis
- 8 triggering modes for each phase
- Virtually unlimited logging with SD card
- Redundancy in storage and communications



PowerSight by Summit Technology
2246 Monument Blvd, Pleasant Hill, CA

1-925-944-1212 • sales@powersight.com • www.powersight.com

QUALITY. SERVICE. SELECTION.



Whatever your conduit challenge,
we're flexible.

For over 60 years, Electri-Flex has provided top-quality conduit solutions. We offer nearly 50 types of Liqueflex® conduit to withstand extreme environments, confined areas, electronic interference and other challenges. Customers recognize our conduit for its superior crush strength, achieved by building in more convolutions per foot. Our expertise also extends to R&D, quality control, shipping and customer service. Electri-Flex has been a family-owned business for three generations.

Contact us today, and discover excellence around every bend.

electri-flex



222 West Central Avenue
Roselle, IL 60172-1994 USA

Toll-free phone (U.S.): (800) 323-6174
Phone: (630) 529-2920
Fax: (630) 529-0482

www.electriflex.com

DISTRIBUTORS
WORLDWIDE

