

NEWS AND NEW PRODUCTS FROM THE LEADERS IN THE ELECTRICAL INDUSTRY

FEBRUARY 2022

Electrical

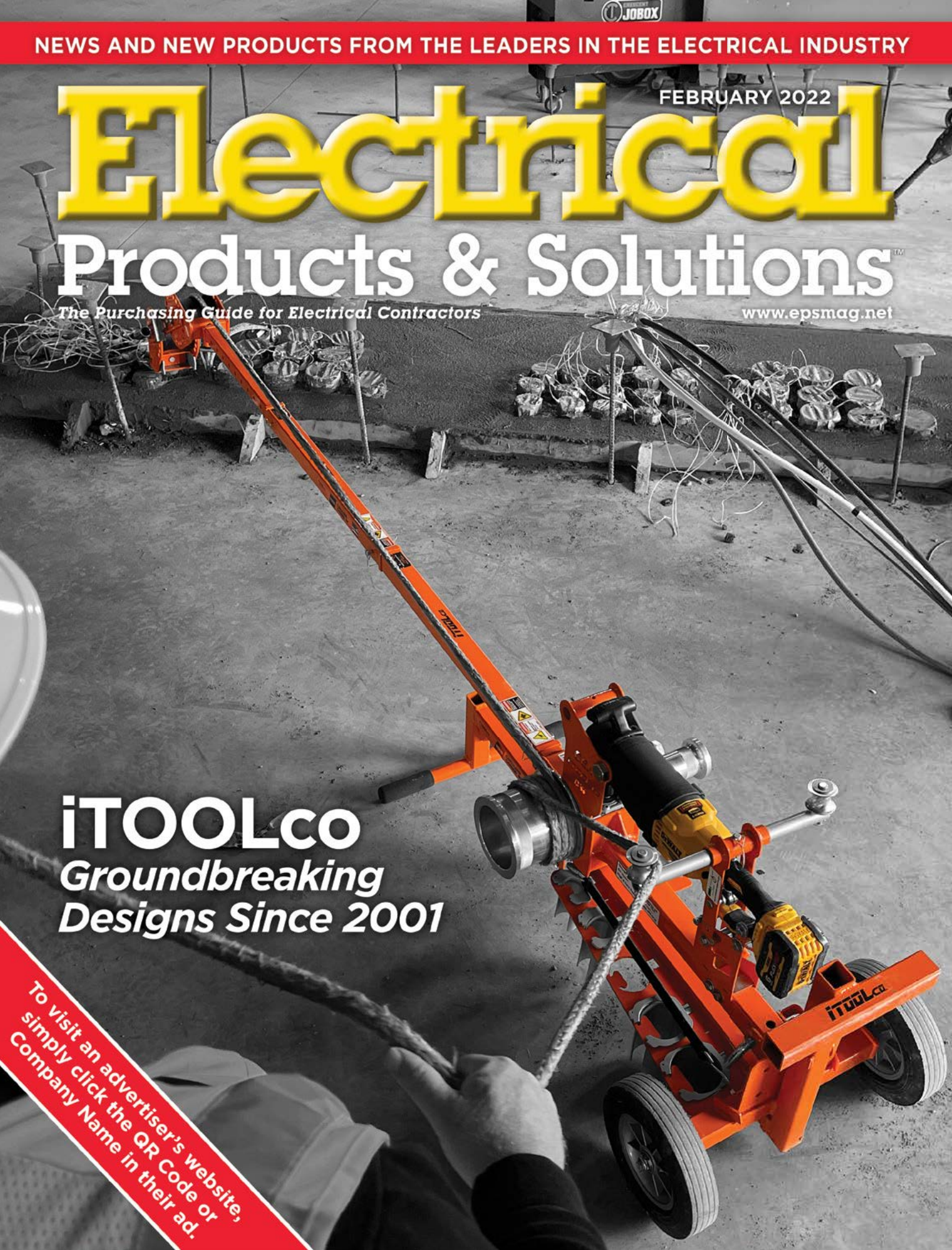
Products & Solutions™

The Purchasing Guide for Electrical Contractors

www.epsmag.net

iTOOLco
*Groundbreaking
Designs Since 2001*

To visit an advertiser's website,
simply click the QR Code or
Company Name in their ad.



Affordable Power Clamp-On Meters

Highest Safety Rated with You in Mind

1000V CAT IV Safety Rated

UL 94 VI flame retardant self-extinguishing

IP54 Rated (model dependent)

Comprehensive set of measurement parameters available including:

AC and DC Voltage up to 1000V_{AC/DC}, **AC and DC Current up to 2000A_{AC}/3000A_{DC}** (model dependent), Resistance, **Continuity**, Frequency, **Diode Testing**, **True InRush® Current**, **Power Measurement** (Real, Reactive and Apparent), THD, Harmonics up to the 25th, Crest Factor, **Min/Max and Peak Capture**, Phase Rotation, RELative and differential, **Temperature** and more...

Automatic AC/DC detection

Display resolution up to 10,000 count

Data logging and wireless communication to a PC or Android™ for data programming, downloading, and printing reports



(models 407 & 607)

True InRush®



**CLAMP-ON
METERS**
**200, 400,
and 600 Series**

Rugged | Accurate | Dependable | Easy to Use

Over 125 years experience in test and measurement instruments encompassing the latest international standards for quality and safety.

www.aemc.com
sales@aemc.com



AEMC®
INSTRUMENTS

CHAUVIN ARNOUX GROUP

BONUS
FEATURE

TO VISIT AN ADVERTISER'S WEBSITE, SIMPLY CLICK THE QR CODE OR COMPANY NAME IN THEIR AD.



Electrical Products & Solutions™

The Purchasing Guide for Electrical Contractors

www.epsmag.net

CONTENTS

8



Electrical Products & Solutions™

The Purchasing Guide for Electrical Contractors www.epsmag.net

PUBLISHER

Danny J. Salchert

OFFICE MANAGER

Anita Salchert

CREATIVE DIRECTOR

Derek Gaylard

CIRCULATION DIRECTOR

Pam Fulmer

CONTRIBUTING WRITER

Calvin Jordan



PRESIDENT

Danny J. Salchert

EXECUTIVE AND ADVERTISING OFFICES

2009 Eagle Ridge Drive
Birmingham, AL 35242

phone: 205.981.4541

fax: 205.981.4544

www.epsmag.net

danny@epsmag.net

Electrical Products & Solutions™ is published twelve times a year on a monthly basis by ABD Communications, Inc., 3591 Cahaba Beach Road, Birmingham, Alabama, 35242, USA. *Electrical Products & Solutions™* is distributed free to qualified subscribers. Non-qualified subscription rates are \$57.00 per year in the U.S. and Canada and \$84.00 per year for foreign subscribers (surface mail). U.S. Postage paid at Birmingham, Alabama and additional mailing offices.

Electrical Products & Solutions™ is distributed to qualified readers in the electrical contracting industry. Publisher is not liable for all content (including editorial and illustrations provided by advertisers) of advertisements published and does not accept responsibility for any claims made against the publisher. It is the advertiser's or agency's responsibility to obtain appropriate releases on any item or individuals pictured in an advertisement. Reproduction of this magazine in whole or in part is prohibited without prior written permission from the publisher.

POSTMASTER: Send address changes to
ABD Communications, Inc., P.O. Box 382885
Birmingham, Alabama 35238-2885

PRINTED IN THE USA

COMPANY PROFILE

- 4** **Protect Yourself**
Miller Safety Consultants — *A Leader in Arc Flash Protection*

COVER STORY

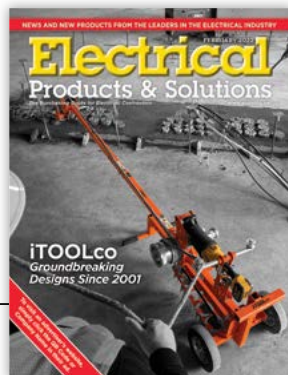
- 8** **iTOOLco**
Groundbreaking Designs Since 2001
BY CALVIN JORDAN

DEPARTMENTS

- 14** INDUSTRY NEWS
22 NEW PRODUCTS
32 AD INDEX

ON THE COVER

Photo courtesy of iTOOLco





**MADE
IN USA**



PRODUCTS, INC.

Productivity and value thru ideas

FOR SAFER BETTER FASTER JOBS



We're Proud to be the Electricians' Friend for Over 50 Years!

Qwik Duct Safer Better Faster

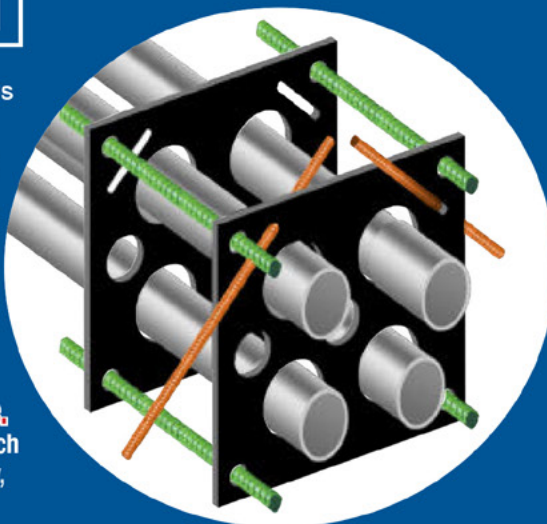
HDPE CUSTOM TEMPLATES

In Any Configuration Required

IP1



Patent
Pending



IP3b

Patent
Pending



PVC Offset

Sizes 1/2" thru 6"
Meets Flexible Mandrel
Test Requirements

Bore Spacers

Sizes 1/2" thru 6"
Roll assembled conduit into
caissons and under
obstructions

IP2



IP13A-F

Conduit Transition Couplings



PVC Schedule 40 & 80

*Transitions in Less Than
5 Minutes*

PATENT
PENDING



IP15

**End Bell
Adapter**

Schedule
40/80 PVC



PATENT
PENDING

PVC/PVC

PVC/EMT

PVC/Rigid

PVC/Liquidtight

PVC/Stainless

PVC/Alum

PVC/Flex

IP14a

**1 Piece
Reaming Bit**

1/2" thru 6"
Schedule 40/80

**Save Cost on the Rigid Nipple, Tape & Labor
Use for Entire Job - Not Just for Repair**

*Plus More Being Invented for **SAFER BETTER FASTER** Jobs . . . Call With Your Ideas!*



SPPProducts.com 800-233-8595 info@SPPProducts.com

Protect Yourself

Miller Safety Consultants — *A Leader in Arc Flash Protection*

Vince Miller started Miller Safety Consultants, a veteran owned business in 1999. The goal of the business was to provide cost effective safety consulting, employee training such as: confined space entry, fall protection, electrical safety and provide sales of electrical shock and flash protective equipment and fall protection equipment to businesses in the Washington DC area.

Reliance Industries provided fall protection products and much of the sales and training was on behalf of the supplier. In 2000, the owner decided to retire from his business, and Vince decided to discontinue the fall protection line of his business and concentrate more in the electrical training and products.

Vince had been a distributor for Certified Insulated Products (CIP), a manufacturer of electrical insulated tools and electrical arc flash clothing manufactured by Otex in Rochester, New York. As a distributor, Vince provided sales through his internet website and much through relationships with electrical contractors. His training was a classroom environment and was provided directly to customers but he also taught as a sub-contractor for other safety consulting companies and the

Chesapeake Safety Council in Baltimore, Maryland. In 2005, Vince partnered with Vivid Learning Systems in Cascades, Washington to provide on-line training in safe work practices.

Training in electrical safe work practices is still provided locally in the Washington DC area and as a partner with an electrical engineering firm and online. The training is based on the Occupational Health and Safety Administration (OSHA) standards and the National Fire Protection Association (NFPA) 70E standard.

Miller Safety Consultants is now a distributor for Cementex USA, Burlington, New Jersey, for insulated tools and equipment and clothing from OTEX Protective, Rochester, New York.

The majority of his sales of products are from the web-based store. Cementex is

nationally known for their quality equipment. Otex Protective is becoming more known for their quality clothing. For years, they have manufactured their products under other provider labels. Vince chose to not create his clothing line, but to sell the manufacturer product.

Vince has worked with many electrical company employees to fine-tune the clothing to be more comfortable for the user. Working closely with the manufacturer, they have made slight changes in how the cloth pattern was modified to meet final production. An example is the lightweight 40 Calorie vented hood offered by Otex.

The material is of the latest technology. The vented assembly is constructed for balance on the back of the hardhat and the airflow is 27 CFM to prevent fogging of the face shield and provide cooling to the worker. It took over a year to develop the product with the user prior to having the hood “flash tested”. This product is now standard issue with many electrical contractors.

Being a small business and having quality providers has resulted in satisfied customers for Miller Safety Consultants. Being a direct supplier for OTEX Protective, another small business means customized customer needs can be met. □

*For more information, visit
Miller Safety Consultants at:
www.electricalsafetyupply.com, email
Vince at: sales@millersafetyltd.com
or give him a call at (703)367-0404.*



The V5™ 40 Cal Ultralight Lift Front Hood System

1. V5™ High-Volume Ventilator with ArcSense Interrupter™
 - Patent-Pending ArcSense Interrupter™ shuts off airflow after an arc flash, preventing further inhalation of manganese fumes
 - 27 CFM blower fans
 - Snap-in design, removable in seconds
2. Milwaukee M12 rechargeable battery and receiver
3. 1:1 Balance: Perfectly balanced back-to-front
4. Paulson face shields and brackets
5. Hood Handle for easy removal or transport
6. LED Head Lamp included

ULTRALIGHT Premium



Protect yourself from "Arc Flash"

ARC FLASH LIFT-FRONT HOOD WITH V¹² HIGH-VOLUME VENTILATOR Compact. Powerful. Reliable

Our V¹² High-Volume Ventilator boasts an unexpectedly quiet, high output (35+ CFM) turbine fan to cool and circulate the ambient air within the hood. Fully protected beneath it's durable ABS shell and added fabric layering, the V¹² High-Volume Ventilator isn't just compliant, it's superior.



40 CAL/CM2 ULTRALIGHT CLOTHING BY OTEX

Our new dual-layer Ultralight clothing takes advantage of DuPont's® dedication to scientific advancement and Westex's® industry leading dependability. Weighing in 37% lighter than traditional HRC4 PPE, our Ultralight Clothing is the most innovative contender in the lightweight arena.

HYBRID LAYERING

Combined Fabric Weight: 14 oz

Outer Layer: DuPont® Protera
Color: Navy

Inner Layer: Westex Ultrasoft
Color: Safety Orange



CALL US TODAY

(703) 367-0404

OR VISIT OUR ONLINE ELECTRICAL SAFETY EQUIPMENT STORE
www.electricalsafetysupply.com

YOU CAN INSTALL AN ENTIRE FIXTURE

(IN THE TIME IT
TAKES TO READ
THIS AD)

CUT INSTALL
TIME BY OVER

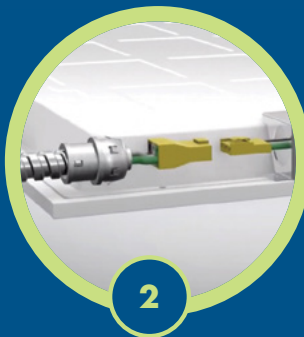
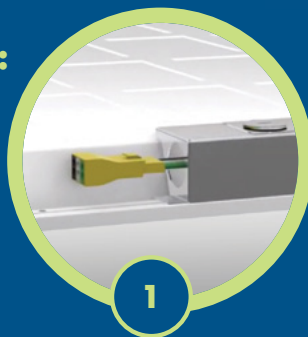
50%—

Install more lights in less time with TCP's prewired, quick-connect Pro Line Panels. The slim, lightweight design is easy to maneuver and quickly slips into place.



HOW OUR PRO LINE PANELS INSTALL FAST:

1. Expose the quick-connect plug from within the driver
2. Connect the flat panel to your power source
3. Place the quick-connect plug back in the driver



MORE CAPABILITIES INCLUDE:

- Daisy chain and dimmable
- Back-lit technology
- Full panel diffusion
- Superior uniformity
- Rough and robust durability

INNOVATION IS LED BY TCP

Visit tcpi.com or
call 1.800.324.1496
to fast-track your
lighting project.



INNOVATIONS

Faster Safer Workspace

iTOOLco.



ALL JACK™

Increase productivity and decrease fatigue using iTOOLco's All Jack™. Install pipe, lights, cabinets, drywall, temporary dust barriers and much more with this innovative jack designed to lift and support the weight of your workpiece while you anchor it into position.

High ceilings and ladder work are not a problem for this dynamic tool. Reach from 58" to a staggering height of 13'6". The industrial gas shock ensures a snug, stable support that stays in place while you complete the installation. Once your workpiece is secured into place, simply remove the All Jack™ by releasing the shock. More powerful than a typical support pole, the All Jack's gas shock can handle your most challenging jobs.



SCAN QR



CORDLESS CANNON 6K™

Speed, versatility, and performance are all yours with iTOOLco's Cordless Cannon 6K™. This portable 6,000 lb. puller is intuitively designed to handle all of your day-to-day wire pulls.

The built-in capstan switch automatically turns the puller on and off. Simply tug on the rope to start the pull and slack off the rope to shut it down. Delivers dynamic performance in remote locations or areas where power is not yet available.



SCAN QR



FOLLOW US:







iTOOLco

Groundbreaking Designs Since 2001

By CALVIN JORDAN

ITOOOLCO IS A UNIQUE RESEARCH AND DEVELOPMENT COMPANY
THAT HAS LED THE ELECTRICAL TOOL INDUSTRY WITH
THEIR GROUNDBREAKING DESIGNS SINCE 2001.



ITOOLco's inventors & Co-Founders David & Michael Jordan have developed and patented countless innovative products, pushing the envelope of what can be done to improve the lives of electricians and distribution partners alike.

With the launch of their latest innovation - The Cordless Cannon 6K. Speed, versatility, and performance are all designed into a small, compact unit. This portable 6,000 lb. puller is intuitively designed to handle all of your day-to-day wire pulls. With a dual capstan design featured across all of their pulling platforms, the Cordless Cannon 6K is able to offer you two pullers in one. A large capstan is able to offer higher speeds, pulling up to 52' per

(CONTINUED ON PAGE 12)



AMTEC CORPORATION

SPECIALIZING IN QUALITY CABLE GRIPS



Made in USA



Cage Code 1RX07



1-800-893-8397
www.amtecgrips.com



adapter that is good for up to 5,000 lbs fits easily over your conduit opening. Meanwhile five conduit adapters (size 2" - 4") store on the cart for loads over 5,000 lbs. ensuring you will be ready for what ever job comes your way. With a single pop pin, you can easily maneuver your pulling head into an overhead, underground, or side pull position. The dual head design also allows for wide angle head adjustment - meeting any inclination you may need. With an extra extension that stores right on the cart, the Cordless Cannon 6K allows the end user to get out 13' of extra wire. When you are ready to pull, the built-in capstan switch automatically turns the puller on and off. Simply tug on the rope to start the pull and slack off the rope to shut it down. No need to worry about keeping up with a foot switch.

Having real world experience as electrical contractors, brothers David and Michael Jordan have a deep understanding of the kind of quality, time-saving tools electricians depend on for doing the job right. Over the years iTOOLco has revolutionized the wire pulling market with the introduction of the first ever 12,000 lb. puller - the Cannon 12K, with built in reverse. As well as their Cordless Cannon 3K & 6K (the first on the market of each, respectively). Capable of reaching areas where power may not be available, these pullers allow users to achieve the same amount of power, without worrying about where it will come from. Also known for their Gear Punch which includes lifetime replacement on draw studs, Tray Rollers, numerous Material Handling solutions, etc. iTOOLco ensures that no matter the job, we have a solution.

The Cordless Cannon 6K (as well as our other products) is proudly made in the United States of America out of Clinton, TN. With a six year limited warranty and an incredibly helpful and friendly staff ready to meet your needs, iTOOLco has quickly become a leader in the electrical tool market. Offering on site demos with the help of traveling demo trailers around the country, our experienced sales staff are able to answer any questions regarding the Cordless Cannon 6K or any other products.

Want to find out more or schedule a demo? Visit us on line www.iTOOLco.com or give us a call at 865-670-3713. □



minute for lighter loads. The the smaller capstan is able to take on higher torque for your heavy loads, while still reaching speeds that far outpace the competition. This dual capstan design allows users to reach the full potential of their puller - without compromising the strength of the puller long term.

With it's versatile and intuitive design, the Cordless Cannon 6K falls in line with

several features seen across iTOOLco's pulling platforms. Receiver hitch and floor mountable, this unit can be broken down to its base to allow quick pulls in tight locations. One pop pin removes the unit from the cart, making easy work of job site set up and maneuvering. Engineered with end users in mind - this puller comes equipped with everything you will need to get going. A patented universal

Locate the source of Leakage Current

TRMS Clamp-on Leakage Current Meter

Shields out noise for low sensitivity, accuracy and stability

- » Check for leakage and locate insulation breakdowns on live circuits
- » Measures low AC currents down to 0.001mA with up to 10 μ A resolution
- » Measures current up to 60Arms, voltage up to 600VAC/DC, Hz on either V or A inputs, and resistance and continuity
- » MAX feature keeps track of highest measured in-rush value
- » Hold feature freezes value
- » Compact jaw accommodating up to 0.91" in diameter
- » One hand operation possible
- » Backlit LCD display
- » 600V CAT III
- » Battery life: 40 hours at ACmA, ACA and ACV functions
60 hours at DCV and Ohm functions



Rugged | Accurate | Dependable | Easy to Use

Over 125 years experience in test and measurement instruments encompassing the latest international standards for quality and safety.

www.aemc.com
sales@aemc.com

AEMC
INSTRUMENTS
CHAUVIN ARNOUX GROUP

Electri-Flex Announces New Regional Sales Manager

Electri-Flex Company, Roselle, IL, announces the hiring of Tyler Knopp for the role of Regional Sales Manager. Tyler comes to Electri-Flex with over 6 years of sales and management experience for a national electrical distributor. He has achieved a variety of industry accomplishments, including 2018 tED Magazine “30 under 35” award winner, graduating from the NAED Leadership Development Program in 2020, and is a current member of the NAED LEAD Committee.

“Tyler’s distribution experience will be a great addition to our team, and he will help continue Electri-Flex’s pursuit of our industry-leading service,” said Brock Klein, National Sales Manager.



Tyler Knopp, Regional Sales Manager of Electri-Flex Company

“Tyler has spent his electrical career finding ways to grow both his business and leadership skills, and we look forward to him continuing those efforts at Electri-Flex.”

Tyler resides in Dubuque, IA, and will serve as Regional Sales Manager for the U.S. central region. In this role, he will work with a network of top manufacturer representatives to sell and market Liguatite® products, while also maintaining distributor relationships, and ensuring customer expectations are exceeded.

To meet the entire Electri-Flex Executive, Sales, and Customer Service teams, visit <https://www.electriflex.com/about/meet-the-team/>. □

ABOUT ELECTRI-FLEX COMPANY

Electri-Flex Company, a leader in electrical conduit design and manufacture for over 65 years, produces Liguatite®, the most diverse line of liquidtight flexible electrical conduit in the industry. The company offers custom design, engineering, quality assurance, and testing capabilities. For more information on Electri-Flex Company, call (630) 529-2920 or (800) 323-6174; fax: (630) 529-0482; e-mail: mktg@electriflex.com; visit: www.electriflex.com; or write: 222 West Central Avenue, Roselle, IL, 60172-1994.



Robroy Industries Announces Steve Voelzke Promoted to President of Electrical Products

Robroy Industries announced the promotion of Steve Voelzke to President of Electrical Products effective immediately. Voelzke joined the Robroy Industries in February 2012 as General Manager and moved into the role of Raceway Division President in 2013.

In his new role as President of Electrical Products, Voelzke will oversee both the Raceway and Enclosure business units and growth strategy of the division. Additionally, he will be responsible for management of all shared services and

objectives across the enterprise.

“Steve is a true leader, he continues to recognize the importance of reinvesting back into culture, people, organizational development, equipment, systems and innovation,” said Robroy McIlroy, CEO of Robroy Industries. “With an equal focus on short and long-term needs, Steve is scaling our organization for successful and sustainable growth. His leadership embodies our three core values of Achievement, Balance and Appreciation.” □



Steve Voelzke, President of Electrical Products

ABOUT ROBROY INDUSTRIES

Robroy Industries is a family-owned manufacturer of electrical products with a history of leadership in corrosion resistant electrical products for over 115 years. For more information, visit: www.robroy.com





Innovative Solution for Harsh Environments and Hazardous Locations



*SolaHD™ SDU AC - B Series
DIN Rail UPS*



*Active
Comm Card*



*Passive
Comm Card*

The SolaHD™ SDU AC - B Series DIN Rail UPS by Emerson is perfect for mitigating power quality issues, minimizing loss of data and downtime. The SDU AC - B combines an industry leading compact design, wide operation temperature range, enhanced communication and unique installation options to solve common application problems.

- **Wide temperature range to protect against shortened battery life**, the field replaceable battery rated from 32 °F to 122 °F (0 °C to 50 °C).
- **Optional network communications that support all major protocols**, including EtherNet/IP™, Modbus®, Profinet or EtherCAT.

Learn more at: www.solahd.com

SOLAHD™

The Emerson logo is a trademark and a service mark of Emerson Electric Co. © 2021 Emerson Electric Co.



CONSIDER IT SOLVED™

Leviton Enhances Customer Support with Introduction of Innovative Salesforce Visual Remote Assistant

New tool enables real-time, interactive, and visual engagement with Leviton Technical Service Representatives

Leviton recently announced significant enhancements to its technical support capabilities with the introduction of the Salesforce Visual Remote Assistant. With this state-of-the-art software tool, builders, contractors and homeowners can connect with Leviton Technical Service Representatives via video directly from their mobile device.

Efficiency is key for Leviton customers seeking technical support. With the Salesforce Visual Remote Assistant, Leviton can help customers troubleshoot and resolve issues faster so that they can quickly get back to their jobs. The software allows technicians, installers or homeowners to transmit live video and images of technical issues from the field while consulting with a remote expert. Salesforce Visual Remote Assistant benefits builders and electricians by improving first-time resolution rates, cutting operational costs and reducing training time.

“Our new Salesforce Visual Remote Assistant tool offers our customers a unique, innovative and user-friendly customer service experience. With visual access to enhance troubleshooting and diagnoses, our technical service team is even better equipped to guide customers quickly and clearly through the process of resolving issues. This is particularly helpful with the installation, set-up and use of more technically advanced

products,” said Brian Avery, senior manager, technical services, Leviton.

The Salesforce Visual Remote Assistant operates as a simple visual connection between the remote Leviton Technical Service Representative and the customer. By visually observing the issue, the service representative is able to immediately understand the customer’s problem and expedite a solution by walking the customer through the answer to their question. Once the job is successfully completed, the technical service representative can view the results and confirm that the issue has been resolved.

The Salesforce Visual Remote Assistant does not require users to download an app. When visual assistance is needed, customers are sent a text message or email to their smart device containing a secure link that will directly connect them to a member of the Leviton Technical Service team. For privacy and security, the link is a one-time use code which expires following the

completion of the support session.

“In addition to our 24/7 online Support Center, mobile app and Live support options, the Salesforce Visual Remote Assistant offers unique visual support leading to a better customer experience for the builder, contractor and end-user community,” said Greg Rhoades, director of marketing, smart and new technology products, Leviton. “This is particularly helpful in new home construction where newer, less familiar products may be installed and when new homeowners may have questions regarding the use and functionality of their new electrical devices.”

Leviton customer support offers a wide range of resources including on-demand step-by-step installation and product programming videos, instruction sheets, knowledge base articles, FAQ’s and more to provide customer assistance where and when it is needed. To learn more about Leviton support services, visit the new Product Support Center at leviton.com/support. □

“Our new Salesforce Visual Remote Assistant tool offers our customers a unique, innovative and user-friendly customer service experience. With visual access to enhance troubleshooting and diagnoses, our technical service team is even better equipped to guide customers quickly and clearly through the process of resolving issues.”

—Brian Avery

ABOUT LEVITON

Every day, Leviton is engineering possibilities that make the future happen, meeting the needs of today’s residential, commercial, and industrial customers globally. From electrical, to lighting, to data networks, and energy management, Leviton develops thoughtful solutions that help make its customers’ lives easier, safer, more efficient and more productive. Driven by its commitment to its customers, the ingenuity of its employees and the safety and quality of its products and solutions, with Leviton, the FUTURE IS ON. For more information, visit <http://www.leviton.com>, www.facebook.com/leviton, www.twitter.com/leviton, or www.youtube.com/Levitonmfg.





Compact and Easy to Install DC UPS for Harsh Industrial Locations



SolaHD™ SDU DC - B Series DIN Rail UPS

The SolaHD™ SDU DC - B Series DIN Rail UPS by Emerson are perfect for mitigating power quality issues, minimizing loss of data and downtime.

The SDU DC - B UPS combines an industry leading compact design, wide operation temperature range -15 °C to +50 °C (+5 °F to +122 °F), enhanced communication and unique installation options to solve common application problems.

Learn more at: www.solahd.com

SOLAHD™

The Emerson logo is a trademark and a service mark of Emerson Electric Co. © 2021 Emerson Electric Co.



CONSIDER IT SOLVED™

Sigma Electric Rolls Out New Sigma Engineered Solutions Branding

Changes reflects the company's expanded capabilities and supply chain solutions

In recognition of the company's growing range of products and services, Sigma Electric is changing its name to Sigma Engineered Solutions. The change speaks to the value the company creates through the sum of its world-class engineering, state-of-the-art manufacturing, first-time-right quality, and superior customer service across the globe.

Headquartered in Garner, N.C., Sigma Engineered Solutions manufactures high-quality castings and precision metal stamping products for applications that include power transmission and distribution, electrical, telecom, e-mobility, aerospace, and solar. Founded in 1982, Sigma has grown from one plant in India to a global manufacturing company with 13 facilities across the U.S., India, and Mexico.

"The new Sigma Engineered Solutions name reflects our evolution into a global solutions provider of highly engineered, complex metal components,



including machined components and precision metal sensors and connectors," said Vagner Finelli, president and chief executive officer of Sigma Engineered Solutions. "With more than 500 highly skilled engineers on staff, we can design, develop, and produce high-quality custom products that solve diverse connectivity needs."

Going forward, Sigma Engineered Solutions will consist of two divisions: Sigma Castings and Sigma Connectivity, which includes the precision metal stamping capabilities the company gained in its December 2019 acquisition of Tooling Dynamics.

In addition to the name change, the company is unveiling a new, more contemporary logo that portrays the connectivity solutions that its products deliver to a growing range of market applications. The company has also launched a new website that provides customers with more information and resources to help develop custom solutions for their businesses.

"One thing that will not change is our commitment to being a company that is great to do business with – a company customers can trust to provide them with products and services that solve their diverse connection needs," Finelli added. □



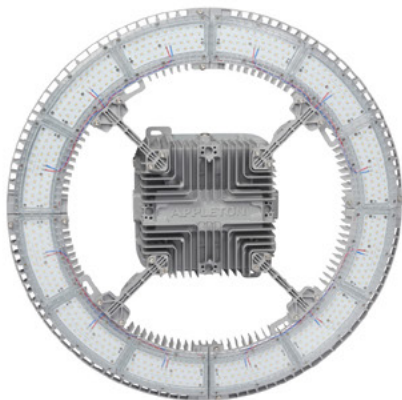
ABOUT SIGMA ENGINEERED SOLUTIONS

Founded in 1982, Sigma Engineered Solutions is a vertically integrated products and solutions provider, with casting, precision metal stamping, in-house tooling and special purpose machine design and manufacturing capabilities. The company has a global manufacturing footprint that includes 13 on-shore, near-shore, and off-shore facilities, as well as sourcing capabilities in China. The company's vertical integration provides the lowest total cost of ownership for customers by combining the competitiveness of global manufacturing with the responsiveness and service of a U.S.-based company.





Lighting Your Way at Greater Heights



Appleton™ IHC LED Luminaire

The Appleton™ IHC LED Luminaire by Emerson is the ideal solution to deliver light from mounting heights of 50 to over 100 feet. With outputs up to 90,000 lumens, an IP66 marine and wet location rating, and an ambient temperature range of -40 °C (-40 °F) to 75 °C (167 °F), the IHC was designed to meet the demands of your harsh industrial environment and lighting requirements.

Learn more at: masteringled.com

APPLETON™

The Emerson logo is a trademark and a service mark of Emerson Electric Co. © 2021 Emerson Electric Co.



CONSIDER IT SOLVED™



**MADE
IN USA**



PRODUCTS, INC.

Productivity and value thru ideas

FOR SAFER BETTER FASTER JOBS

2021 NECA
ShowStopper
WINNER

Transition Couplings



**PVC Schedule 40 & 80 to
Inside PVC to Inside PVC
When Exiting Concrete Slab**

**Save
at Least
1 Hour per
Installation.**

NEW

**Transitions in
Less Than 5 Minutes!**

**Save Cost on the Rigid
Nipple, Tape & Labor**

**Use for Entire Job -
Not Just for Repair**



PATENTED

1/2" thru 6"

All SP Products Inc.
Transition Fittings are
manufactured for
installation to either
meet or exceed
in accordance with
NEMA TC2, TC3 or
UL 651 specifications

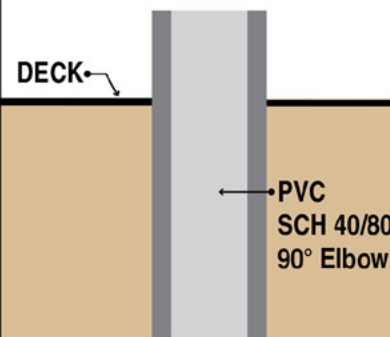


Transition Couplings

Size	Catalog #
1/2"	50PVC-IN/PVC-IN
3/4"	75PVC-IN/PVC-IN
1"	100PVC-IN/PVC-IN
1 1/4"	125PVC-IN/PVC-IN
1 1/2"	150PVC-IN/PVC-IN
2"	200PVC-IN/PVC-IN
2 1/2"	250PVC-IN/PVC-IN
3"	300PVC-IN/PVC-IN
3-1/2"	350PVC-IN/PVC-IN
4"	400PVC-IN/PVC-IN
5"	500PVC-IN/PVC-IN
6"	600PVC-IN/PVC-IN

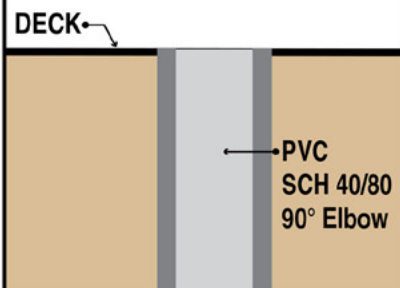
All Above Meet UL651
CSA C22.2, No.85 and
US Army Corps Engineers
Specifications

STEP 1



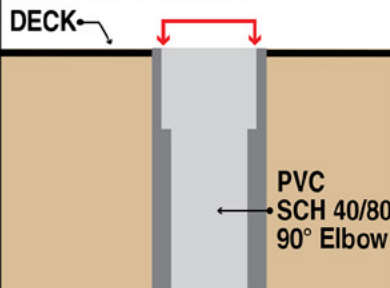
STEP 2

Cut SCH 40/80 PVC Elbow
Flush to Deck



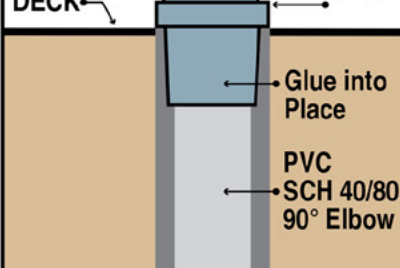
STEP 3

Ream out 1/2 of wall thickness
SCH 40/80 PVC Elbow



STEP 4

Insert
Specified
Transition
Coupling



See Our
Conduit Plug
See page IP16



See Our
REAMING BITS for
Transition Couplings



See page IP15

SP PRODUCTS, INC
Productivity and value thru ideas



**PATENT PENDING
PATENTED**

LABELS APPLY TO PRODUCTS ONLY WHERE SHOWN ABOVE



730 Pratt Boulevard • Elk Grove Village, IL 60007
P: (847) 593-8595 • F: (847) 593-8629 • Toll-free (800) 233-8595
E: info@spproducts.com • www.spproducts.com

IP13k

Emerson Expands LED Temporary Work Light Line to Drive Increased Safety and Productivity

Appleton LED lights now available in three brightness levels for expanded use in construction, auto repair, and MRO

Emerson recently added new models to its Appleton TL LED temporary work light family, enabling electricians, MRO crews, mechanics, and construction professionals to leverage extremely bright, energy-efficient 360° illumination in more projects to achieve improved safety and productivity. Depending on their needs, customers can now choose from 60W (200W HID equivalent – 7,200 lumens), 100W (400W HID equivalent – 12,000 lumens), or 150W (600W HID equivalent – 18,000 lumens) TL models, all delivering highly mobile, affordable and bright lighting.



Light the Way to Safety

Workers need bright temporary lighting to prevent accidents while handling dangerous tools and equipment, operating heavy equipment, or navigating sites that may include potholes, drops, crumbled concrete, rebar and other hazards. According to OSHA, 2.9 million American workers are injured on the job each year, with poor lighting to blame for the most frequent types of accidents such as slips, trips, falls, and contact with objects and equipment. Injuries caused by falls, in particular, are more likely to be life-threatening than most other types of injuries. Spinal, head, or neck injuries are a common result of falls, regardless of the height, and can leave the worker severely disabled or lead to death.

**For more information, visit
www.masteringLED.com**

American Lighting Introduces Two Easy-To-Install, Economical Builder Grade LED Fixtures

New, affordable, easy-to-install undercabinet and downlights are designed specifically for the homebuilder market

American Lighting, a leading manufacturer of high-quality lighting innovations for residential, commercial and specialty projects, introduces two new builder grade fixtures, the Contrax 2 Builder Grade Undercabinet Light and NIEVE Series Downlight, designed specifically for residential applications.

Created for homebuilders, the economical Contrax 2 Builder Grade LED Undercabinet Light offers contractor-friendly knockouts with a versatile access panel, delivering a simple and straightforward hard-wiring process. In addition to allowing low power consumption of up to 24W, Contrax 2 is surface mounted for an ultra low profile and available in 8", 16", 24", 32" and 40" size options. With white or dark bronze finishes and a 120° beam angle, this LED undercabinet light provides essential task lighting for a variety of applications.



The easy-to-install and affordable NIEVE Series Downlight is a low-profile LED fixture that wires to most standard 1-1/2" deep octagonal junction boxes. Featuring an edgeless surface mount design that blends seamlessly into its surroundings, the downlight offers uniform light output, producing up to 1200 lumens. It's available in two fixture sizes, 5" and 7", with wattages of 10W, 15W or 20W with a battery back-up accessory.

Contrax 2 features 120V AC input, while NIEVE offers 120-277V AC voltage operation. Both are available in 3000K CCT with a high color rendering index of 90+ CRI. Contrax 2 is dimmable 10-100% with TRIAC and CL options. The same capabilities are available with NIEVE using a TRIAC dimmer, or 0-10V dimming.

Contrax 2 is rated for dry environments, while NIEVE is designed for wet locations. Both fixtures are cETLus listed and have a performance life rated at 35,000 hours.

**For more information, visit
<https://americanlighting.com>**



Extend Luminaire Life While Reducing Energy Consumption



Appleton™ Mercmaster™ Connect LED

The Appleton™ Mercmaster™ Connect LED by Emerson is designed to illuminate hazardous and harsh industrial locations with integrated motion and illuminance sensors. Paired with Emerson's Plantweb Insight Connected Lighting Application, operators have access to lighting usage data and sustainability analytics.

The Mercmaster Connect LED provides facility managers with continuous monitoring of their LED lighting with real-time insights gained into sustainability goals, diagnostics and lumen levels from any remote location at dramatically lower costs as compared to wired alternatives, with faster installation time and minimal disruption to plant operations.

Learn more at: masteringled.com

APPLETON™

The Emerson logo is a trademark and a service mark of Emerson Electric Co. © 2021 Emerson Electric Co.



CONSIDER IT SOLVED™

Get More Power with New DEWALT® 20V MAX* XR® Brushless 7/16 in. Quick Change Stud and Joist Drill with POWER DETECT™

DEWALT Continues New Product Innovation with Compact Stud and Joist Drill with POWER DETECT™ that delivers up to 50% more power when using a DCB208 pack

DEWALT, a leader in total jobsite solutions and innovation, today announced the 20V MAX* XR® Brushless 7/16 in. Quick Change Stud and Joist Drill with POWER DETECT™ (DCD443B). Drilling up to 400 7/8-In. holes per charge†, the tool is the latest to join the lineup of 20V MAX* products with POWER DETECT™ technology that maximizes performance when used with high-capacity XR® batteries. When paired with the DCB208 DEWALT 20V MAX* XR® battery, the drill outputs more power and more holes per charge, furthering DEWALT's commitment to providing end-users the tools they need for the jobsite of the future.

Ideal for electricians, plumbers, and remodelers, the drill provides ease of use with a 7/16-In. Hex Quick-Change Chuck for fast and easy bit changes. To aid in user control, the E-Clutch® System shuts the tool down if necessary, in a bind-up situation. The drill is also designed with a brushless motor that produces up to 1,475 UWO, an LED light that provides illumination in dark or confined spaces, and is TOOL CONNECT™ Chip Ready (chip sold separately), allowing for location monitoring on the jobsite.

The DCD443B is available now as a bare tool for \$279 MSRP.



**For more information, visit
www.dewalt.com**



In-Stock, High-Efficiency Disk Light Offers Choice of 2700K, 3000K, 3500K, 4000K and 5000K Illumination at Time of Installation to Assure Proper Lighting While Reducing Inventory

EarthTronics, dedicated to developing innovative energy-saving lighting products that provide a positive economic and environmental impact, introduces its Color Selectable LED Disk Light to ensure proper color lighting for retrofit and new construction light commercial and residential applications.

Available in 4- and 6-inch fixtures, the EarthTronics Color Selectable LED Disk Light features five color selectable options, including 2700K, 3000K, 3500K, 4000K and 5000K, that are easily switched at the time of installation. Ideal for use in closets, corridors, hallways, offices, stairways and many other light commercial or residential settings, the 4-inch LED Disk Light provides 70 lumens per watt with a high 80+ CRI for improved visual acuity and efficient performance. The 15-watt, 6-inch Color Selectable LED Disk Light provides 1050 lumens.

Both the 4- and 6-inch lamps are IP65 rated for wet locations, making them a perfect solution for high-humidity areas, including bathroom showers in residential care facilities, hospitals, hotel guest rooms, apartments and homes. Operating on 120 VAC, the Color Selectable LED Disk Light can be dimmed down to 10 percent. It can be installed with either a E26 screw base connector, which is included, or hard-wired directly to a junction box.

The Color Selectable LED Disk Light is Energy Star®, ETL and FCC certified to comply with North American safety standards. The easy-to-install light will perform in temperatures ranging from -40°F to 135°F with a rated performance life of 36,000 hours and comes with a five-year limited warranty. The Color Selectable LED Disk Light may be accepted for utility rebates in many markets by checking EarthTronics Rebate Finder.

**For more information, visit
www.earthtronics.com**

SPPRODUCTS, INC.

Productivity and value thru ideas

Proud to be the Electricians' Friend for Over 50 Years!



IP26 Flat "Big O" Box Support Plate



PATENT PENDING



SAVES OVER 1 HOUR PER INSTALLATION

Prefabricated Assemblies

SAVE More Than \$1500 per Wall Outlet

PFA3



Conduit & Box Support Plates



UL

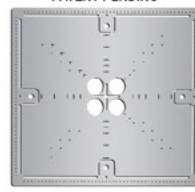
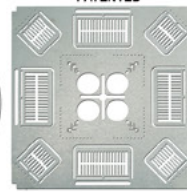
IP5
PATENTED

* IP6
PATENTED

* IP6c
PATENT PENDING

* IP7
PATENTED

IP8
PATENT PENDING



Support From Only ONE Rod Plus Eliminates Conduit Clamps
Save More Than One Hour per Installation! *

IP11

Trapeze Brackets

Original EZUTB - Size 1/2" thru 1 1/4" Conduit or equal size MC Cable.

SAVE OVER 20 MINUTES PER FOOT

TRAPEZE Eliminates ALL Conduit Clamps!



PATENTED

NECA SHOW STOPPER 1991

Mount Boxes on Both Sides or Between Studs

IP28a
PATENTED
UL

Strong 16 Gauge Galvanized Steel



2 Box Flat Fixed Position

IP13a-13h

Transition Couplings



PATENTED

a PVC to PVC

b PVC to EMT

c PVC to Rigid

d PVC to Flexible

e PVC to Aluminum

f PVC to Stainless

g PVC to Liquitite

h PVC to EMT Comp.

Sizes 1/2" thru 6" Schedule 40/80 Conduit

IP15
1 Piece Reaming Bit
PATENT PENDING
1/2" thru 6"



High Speed Steel for Long Life.

Installation in Less Than 5 Minutes

- Use For Entire Job - Not Just for Repair!

IP19 4-Conduit Block

PATENTED

Support up thru 4 conduits From ONLY 1 ROD!

SAVE OVER 30 MINUTES PER INSTALLATION



IP21a QwikBlock Box Support

PATENT PENDING

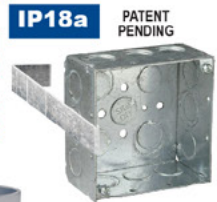
NEW



Accepts Both 1/4" & 3/8" Threaded Rod

NEW

Snap-ON Adjustable Back Box Support



IP18a PATENT PENDING

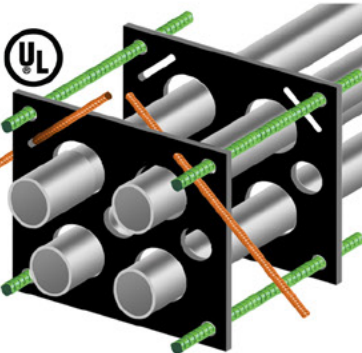
IP1

QwikDuct HDPE CUSTOM TEMPLATES

LOWER CONDUIT FROM ABOVE
NO WORKERS BELOW PREVENTS INJURIES OR DEATHS
4,000 PSI TENSILE STRENGTH AT BREAK
OVER 12X FASTER THAN SPACERS & CHAIRS

PATENT PENDING

NECA SHOW STOPPER 2000



IP3a

End Bell Adapter



PATENT PENDING

Smooth Edges Allow Trouble Free Wire Pulls.
PVC Schedule 40 & 80
Sizes 1/2" thru 6"

IP3b

PVC Offset

1/2" thru 6" Conduit
1/2" thru 2" Offset

PATENT PENDING



Plus More That Do Jobs SAFER BETTER FASTER Constantly Being Invented!



SPProducts.com 800-233-8595 info@SPProducts.com



Eaton Brings New Levels of Connected, Secure Power Protection to Distributed IT environments

Power management company Eaton today introduced the latest advancement in intelligent power management with the North American launch of the 5PX G2 uninterruptible power supply (UPS). The new solution delivers enhanced connectivity and cybersecurity protection for Eaton's legacy 5PX UPS technology, making it ideal for users in distributed IT or edge environments, from medical facilities to university campuses to retail offices.

"As businesses across industries shift critical IT functions to a distributed model, it becomes more critical than ever to protect against downtime in these environments," said Rusty Scocia, product line manager, Eaton. "By bringing new connected capabilities to the 5PX G2 UPS, we're giving these users an easy way to protect servers, switches, storage and other essential equipment without the need for on-site IT support. And, with enhanced cybersecurity protection, users have greater peace of mind that essential equipment is safeguarded from threats."

With an increased standard runtime and enhanced surge protection, Eaton's 5PX G2 UPS offers a flexible solution designed with distributed IT environments in

mind. With the enhanced connectivity of Eaton's Gigabit Network Card (NETWORK-M2), users can manage and monitor critical infrastructure in real time through integration with Eaton's Intelligent Power Manager disaster avoidance software and PredictPulse remote monitoring service, both key components of the Eaton Brightlayer Data Centers suite. The Gigabit Network Card is the first UPS connectivity device to meet both UL and IEC cybersecurity standards, enabling users reduce their risk of intrusion.

**For more information, visit
www.eaton.com**

Milwaukee® Grows N95 Respirator Line

Milwaukee Tool continues to expand their N95 Respirator Line to include a unvalved N95 Respirator in addition to the existing N95 Valved Respirator and N95 Valved Respirator with a Gasket.

Milwaukee Tool N95 Respirators are designed to stay comfortable all day on the jobsite. These respirators feature two soft adjustable straps and a flexible nose bridge, providing users with a better fit. Additionally, the straps have a staple-free attachment method to the mask that reduces irritation from all-day wear. These Milwaukee® respirators are NIOSH N95 approved for use for protection against non-oil based particulates from sanding, cutting, grinding, insulation particles, mowing, sweeping, bagging, processing minerals, coal, iron ore, flour, metal, wood, and pollen.

Milwaukee® N95 Respirator Lineup

N95 Respirator - NEW!

1PK N95 Respirator	48-73-4031 - \$3.47
3PK N95 Respirator	48-73-4032 - \$8.47
10PK N95 Respirator	48-73-4034 - \$19.97
20PK N95 Respirator	48-73-4035 - \$31.97

N95 Valved Respirator

1PK N95 Valved Respirator	48-73-4011 - \$3.97
3PK N95 Valved Respirator	48-73-4012 - \$9.97
10PK N95 Valved Respirator	48-73-4014 - \$25.97

N95 Valved Respirator with Gasket

1PK N95 Valved Respirator with Gasket	48-73-4001 - \$5.97
3PK N95 Valved Respirator with Gasket	48-73-4002 - \$14.97
10PK N95 Valved Respirator with Gasket	48-73-4004 - \$36.97



**For more information, visit
www.milwaukeeetool.com**

First there was 4 square... and now the **REVOLUTIONARY 5 Square®** Box!!

You've struggled with 4 Square boxes for years - you know how small, cramped and time consuming they are. Finally, there is a solution that allows you the space you have always needed.

The **5 Square®** Boxes (5" x 5" x 2-7/8") provide up to 88 in³ of interior volume which more than doubles that of most existing boxes on the market.

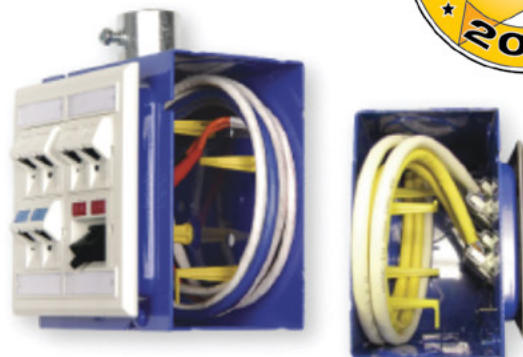
Create a robust and unrivaled infrastructure for the life of your facility with the **5 Square®** Products!

Fire Signal



- TWICE THE VOLUME AS MOST BOXES
- SAVE LABOR...INCREASE PROFITS
- ELIMINATES TROUBLESHOOTING TIME AND COST
- FULLY UPGRADEABLE SYSTEM
- SPECIFIED BY ENGINEERING FIRMS, HOSPITALS, UNIVERSITIES & GOVERNMENT AGENCIES
- AVAILABLE IN ZINC OR RED

Telecommunications



- INTEGRAL CABLE MANAGEMENT
- SAVE LABOR...INCREASE PROFITS
- FACILITATES MIN. BEND RADIUS REQUIREMENTS
- SUPPORTS CURRENT AND EVOLVING SYSTEMS
- SUPPORTS PoE PLUS
- SPECIFIED BY ENGINEERING FIRMS, HOSPITALS, UNIVERSITIES & GOVERNMENT AGENCIES



REPAIR CONDUIT IN A SNAP!

No Tape • No Plastic Straps • No Metallic Straps

NO KIDDING!

*Designed especially for power, communications
and fiber optics.*



STEP 1
Remove damaged
conduit



STEP 2
Cut split duct
conduit to fit



STEP 3
Snap in
place

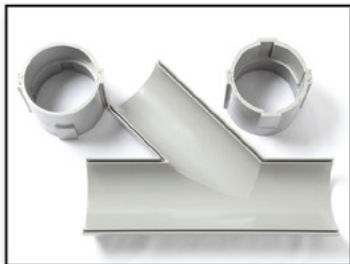
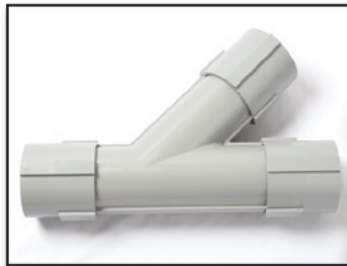
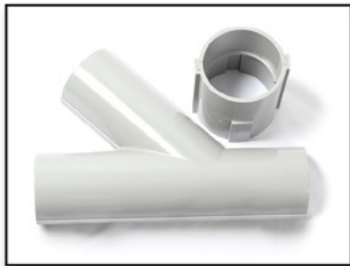


STEP 4
Attach
adapters



STEP 5
Finish job in
record time

"The World Leader In Split Conduit Products"



Conduit Repair Systems, Inc.

The World Leader In Split Conduit Products

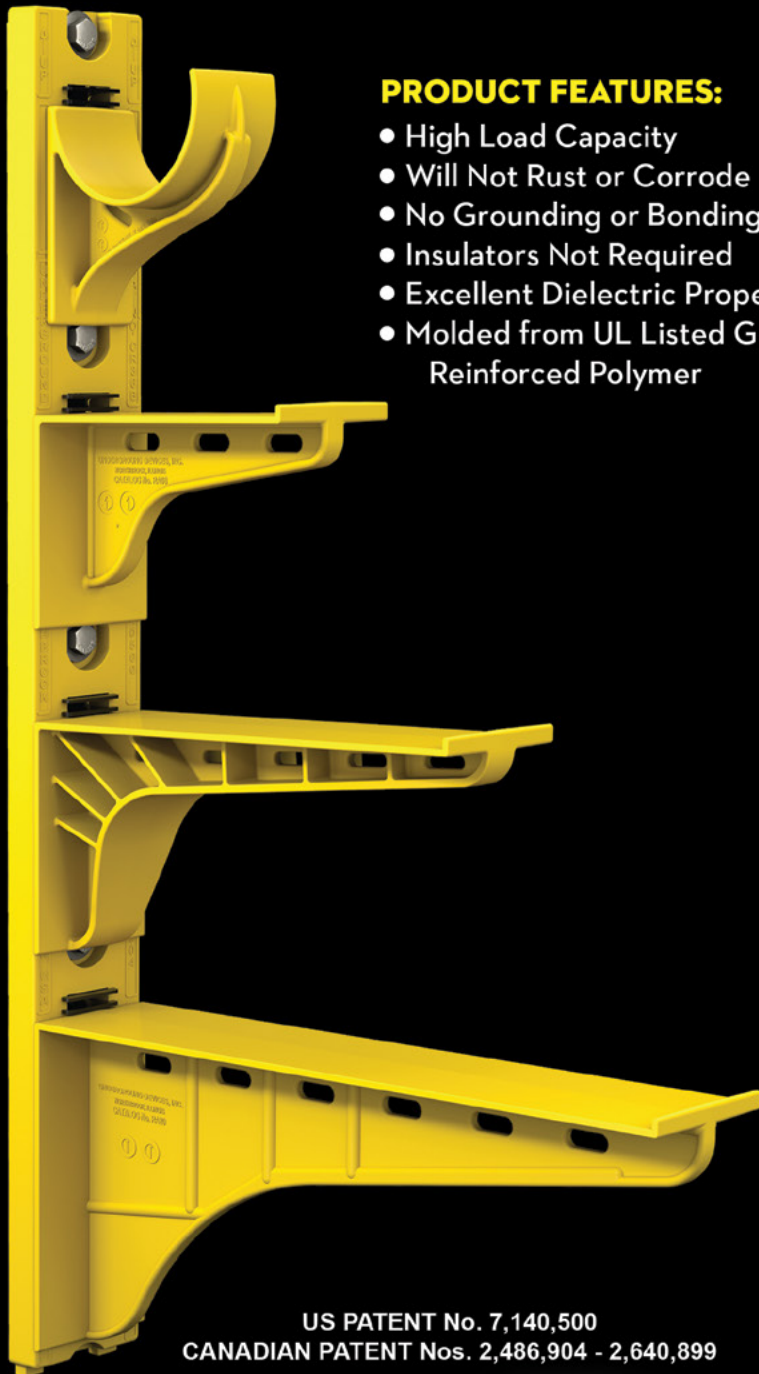


800.670.1804 • 435.673.8724 fax • crs@conduitrepair.com • www.conduitrepair.com

The Heavy Duty Nonmetallic CABLE RACK



For Power and Communications Manholes And Vaults



PRODUCT FEATURES:

- High Load Capacity
- Will Not Rust or Corrode
- No Grounding or Bonding
- Insulators Not Required
- Excellent Dielectric Properties
- Molded from UL Listed Glass Reinforced Polymer



HDL Arm Lock shown with
RA04 Arm and CR36-B Stanchion



3HDS - 3" throat saddle shown with
a cable secured by cable ties.



RA08 - 8" arm shown with three
cables secured by cable ties.

US PATENT No. 7,140,500
CANADIAN PATENT Nos. 2,486,904 - 2,640,899

UNDERGROUND DEVICES
INCORPORATED



420 ACADEMY DRIVE
NORTHBROOK, IL 60062
Phone: 847-205-9000 • Fax: 847-205-9004
Website: www.udevices.com

Intelligent Luminaire Group Control

SIDEREA groupCONTROL for on-demand control of Smart City lighting

Tridonic has added groupCONTROL functionality to its SIDEREA solution for efficient lighting in smart cities. The new system enables groups of up to 60 luminaires to be controlled.

Tridonic has expanded its SIDEREA family of citizen centric lighting solutions with the addition of SIDEREA groupCONTROL. This new feature enables urban outdoor lighting systems with up to 60 light points – for example in parks or along cycle and pedestrian paths – to be controlled centrally and autonomously. With the aid of sensors or programmed schedules, urban areas can be illuminated reliably and on demand. The Dynamic Lighting function is capable of controlling Tunable White luminaires, thereby providing cities with a flexible means of meeting demand for daylight-dependent lighting. The autonomous system is based on the interaction of smart components tailored to facilitate the management of lighting installations in the smart cities. The solution comprises all the components needed to connect to central management systems and Smart City platforms, including sensors, drivers, communication modules, wireless modules and gateways.

A vital component of groupCONTROL is the Multi Master Controller CIS 30 DA RF, which has been the first controller on the market to be Zhaga D4 certified. This certification ensures the interoperability of luminaires, drivers, connection nodes and peripherals. It also regulates the connection to the luminaire with a Zhaga-compliant connector. The CIS 30 DA RF controller controls up to eight DALI-DT6 channels as well as the integrated ambient light sensor which opens up dynamic light scenes and Light on Demand. Thanks to the Zhaga Book 18 Standard and D4i certification, the intelligent system can be seamlessly integrated in an IoT network via a cloud gateway in the next expansion stage. Scalability ensures the future viability of this smart system.

**For more information, visit
www.tridonic.com**



The groupCONTROL system enables outdoor lighting systems with up to 60 light points to be controlled autonomously.



A vital component of groupCONTROL is the Multi Master Controller – the first controller on the market to be Zhaga D4 certified.



SYLVANIA UltraLED Dual Selectable RT Downlights

New SYLVANIA UltraLED Dual Selectable RT Downlights are long-lasting, easy to install and reliable. These new LED downlights use lighter aluminum housing which allows for quick and easy installation and delivers optimal performance. The deeper housing also delivers uniform light distribution with less glare. By being able to select the ideal lumen output and color temperature, you can get the best light for your application from one downlight. This also saves you space in your inventory or truck without limiting the options you can offer your customers. These are Energy Star listed and CEC compliant for sale in California. They are Wet Rated, 0-10 volt dimmable and compatible with the SYLVANIA field installable emergency battery back-up unit.

Make the bright choice with the SYLVANIA UltraLED Dual Selectable RT Downlights.

**For more information, visit
www.ledvanceUS.com**

DRIVEN TO DELIVER

THE CONSOLE X



- Clean up those cabs and get your fleet organized!

Your Total Mobile Office Solution

The Truck Console-X combines your Laptop Work Station, Radios, Speakers, Cables, Storage and Cup Holders, No Drill Installation Brackets Included.

The **Truck Console -X** is the latest innovative mobile office solution to join the Mobile Desk brand family of products. This complete control, communication and convenience Utility Truck Console is becoming the new standard for fleets of all sizes. The design of the **Truck Console -X** has originated from our years of experience working directly with the lineman, supervisors, communications, and fleets of some of the most notable utility companies in America. Loaded with standard and optional features that maximize ergonomics, productivity, and fleet/telecom standards into one Mobile Office Solution.

Screen Out™ SCREEN-DISABLER™
Blanks your screen while you drive!

Our Patented Screen Out App **Stops texting** while driving for all employees on all tablets, laptops and smart phones that run Windows, iOS or Android Operating Systems. **It's that easy!**

877-663-3375 Ext 303. www.screenout.net

Find us on:



MOBILEDESK
MOBILE OFFICE SOLUTIONS

1-877-663-3375

www.mobiledesk.com


©2018 Mobiledesk

This advertiser index is compiled as a courtesy to our readers. While every effort is made to provide a complete and accurate listing of companies and page numbers, the publisher is not responsible for errors.

Company	PG#	Company	PG#
AEMC INSTRUMENTS	IFC	MOBILE DESK	31
AEMC INSTRUMENTS	13	RANDL INDUSTRIES	27
AMTEC CORPORATION	11	SOLAHD / EMERSON	15
APPLETON / EMERSON	19	SOLAHD / EMERSON	17
APPLETON / EMERSON	23	SP PRODUCTS INC	3
CONDUIT REPAIR SYSTEMS	28	SP PRODUCTS INC	20, 21
GREAVES USA	BC	SP PRODUCTS INC	25
ITOOLco	7	TCP	6
KRENZ & COMPANY	32	TIMCO INSTRUMENTS, LLC	IBC
MILLER SAFETY CONSULTANTS, LTD	5	UNDERGROUND DEVICES	29

When it comes to transformer cooling fans, Krenz-Vent is the industry recognized gold standard. Our leadership position is earned through 80+ years of R&D plus our superior engineering and customer service. You can rest easy when you specify Krenz fans.

ENGINEERED TO COOL
There is no comparison.



KRENZ & COMPANY, INC.

KRENZVENT.COM • 262.255.2310 • KRENZ@KRENZVENT.COM

ALL THE INFORMATION YOU NEED IS JUST A CLICK AWAY AT
WWW.EPSMAG.NET

Electrical
Products & Solutions

HOME ARTICLES NEWS VIDEOS PRODUCTS SUBSCRIBE CONTACT

Versatile, Low-cost Insulation Resistance Testing
SEPTEMBER 22, 2021

WHAT'S NEW

Conduit Repair Systems, Inc.
The World Leader in Split Conduit Products

Enhanced LED Linear Vaportight Now Available from Barron Lighting Group
PRODUCTS SEPTEMBER 22, 2021

DEWALT® Launches New TOUGHSERIES™ Hand Tools, Redefining The Standard Of Tough
PRODUCTS SEPTEMBER 22, 2021

Emerson LED Emergency Exit Lighting Helps Manufacturing Plants Offer Safer Workspaces
PRODUCTS SEPTEMBER 22, 2021

Affordable test equipment for 2022



Spitfire - Buried Low Voltage Cable Fault Locator

- ◆ Accurate
- ◆ Easy to use
- ◆ High energy output
- ◆ Proven reliability
- ◆ Compact design
- ◆ Lightweight

Wayfind'r - Impulse cable tracer

- ◆ Accurate
- ◆ Easy to use
- ◆ Connects directly to energized cables
- ◆ Distinct signal for easy tracing
- ◆ Traces direct buried and cables in conduit
- ◆ Rugged, compact design

Impulse Phaser - Cable / phase system

- ◆ Accurately identifies cables in trenches, vaults, conduits and enclosures
- ◆ Accurately identifies phases in multi-conductor cables
- ◆ Identifies jacketed, shielded, cables, even in pipe
- ◆ Easy to understand and use



TIMCO INSTRUMENTS, LLC

Phone: (401) 539-7120 Fax: (401) 539-6018
www.timcoinstruments.com



*Making perfect connections has never been simpler. In fact, now it's a **SNAP!***

NEW *SNAP Connectors* from Greaves. A revolutionary compression connector concept that gets the job done with just a few turns of a standard wrench!

- ▶ Time-saving, easy installation
- ▶ Superior pull-out strength and conductivity
- ▶ No bulky and costly tools and dies



GREAVES



860-664-4505 | 800-243-1130 | www.greaves-usa.com | info@greaves-usa.com