

HIGH PERFORMANCE INSULATED TOOLS ARE ESSENTIAL FOR ELECTRICAL SHOCK HAZARDS

JUNE 2022

Electrical Products & Solutions™

The Purchasing Guide for Electrical Contractors

www.epsmag.net

**LED Luminaires
Outperform in
Demanding
Industrial
Facilities**

To visit an advertiser's website,
simply click the QR Code or
Company Name in their ad.

CORDLESS CANNON 6K

iTOOLco.

WWW.iTOOLco.com | 865.670.3713



Speed, versatility, and performance are all yours with iTOOLco's Cordless Cannon 6K™. This portable 6,000 lb. puller is intuitively designed to handle all of your day-to-day wire pulls.

The built-in capstan switch automatically turns the puller on and off. Simply tug on the rope to start the pull and slack off the rope to shut it down. Delivers dynamic performance in remote locations or areas where power is not yet available.



BONUS
FEATURE

TO VISIT AN ADVERTISER'S WEBSITE, SIMPLY CLICK THE QR CODE OR COMPANY NAME IN THEIR AD.

made with FLIPHTML5

COVER STORY Emerson

Since electronic components are sensitive to heat, an optimal thermal design can be the determining factor for a product achieving its lifetime claims and avoiding quality issues. LED color shift, driver failures, short circuits, and more can all be tied to poor thermal design.

Corrosive and Wet Atmospheres

Exposure to corrosive chemicals and solvents, adverse weather, salt water, and various pollutants accelerated corrosion, leading to premature failure. Almost 50% of all electric, electronic and mechanical component failures are caused by corrosion. The World Corrosion Organization estimates the worldwide annual cost of corrosion at \$2.2 trillion, more than 7 percent of global GDP.

Part 2 of this article from Emerson will conclude in the July issue of *Electrical Products & Solutions* magazine.

Heat-Related Lighting Problems

50% of industrial facility managers reported lighting problems were heat-related.

Yes, all	5%
Yes, most	20%
Yes, some	32%
No	44%

Extend Luminaire Life While Reducing Energy Consumption

The Appleton™ Mercurius™ Connect LED by Emerson is designed to illuminate hazardous and hard-to-reach industrial locations with energy and motion and luminance sensors. Paired with Emerson's Plantwide Insight Connected Lighting Application, operators have accurate lighting usage data and sustainability analysis.

The Mercurius Connect LED provides facility managers with continuous monitoring of their LED lighting with real-time insights gained into sustainability goals, diagnostics and lumens levels from any remote location at dramatically lower costs as compared to wired alternatives, with faster installation time and minimal disruption to plant operations.

Learn more at marteringled.com

APPLETON

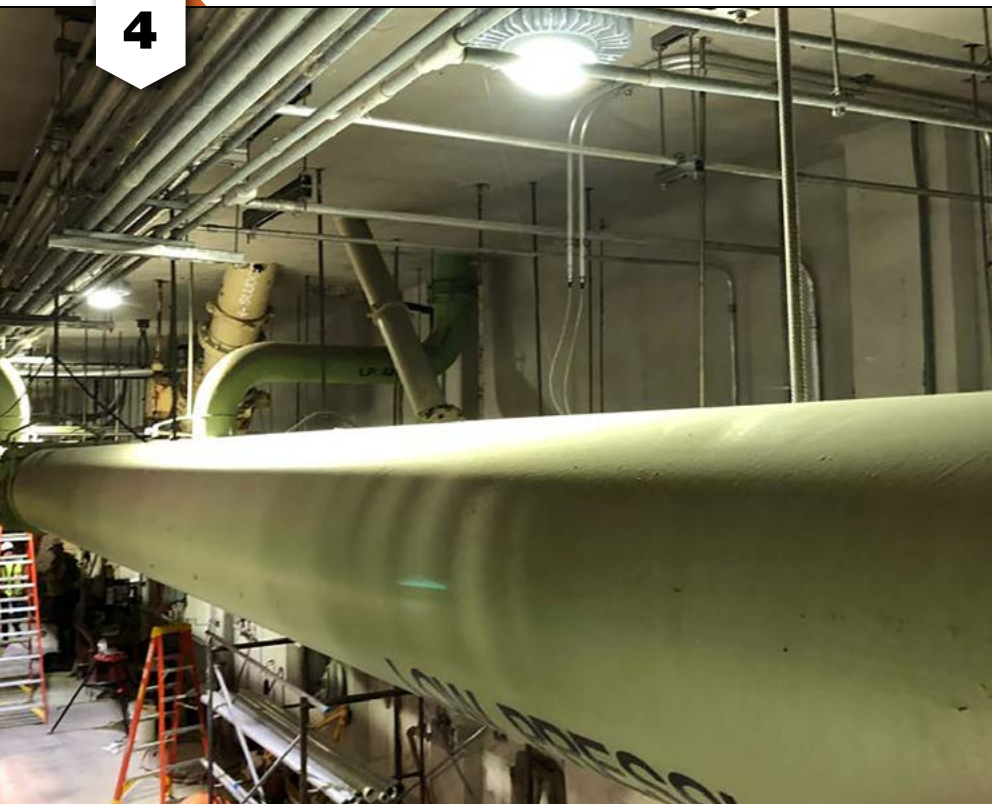
EMERSON

CONSIDER IT SOLVED

Electrical
Products & Solutions™
The Purchasing Guide for Electrical Contractors
www.epsmag.net

CONTENTS

4



COVER STORY

4 LED Luminaires Outperform in Demanding Industrial Facilities - PART 1

COMPANY PROFILE

10 Protect Yourself Miller Safety Consultants — *A Leader in Arc Flash Protection*

FEATURE

12 High Performance Insulated Tools are Essential for Electrical Shock Hazards BY FRANKO GREGORY AND DWAYNE SOMERS

DEPARTMENTS

- 16 INDUSTRY NEWS
- 22 NEW PRODUCTS
- 32 AD INDEX

ON THE COVER

Photo courtesy of Emerson



Electrical Products & Solutions™

The Purchasing Guide for Electrical Contractors www.epsmag.net

PUBLISHER

Danny J. Salchert

OFFICE MANAGER

Anita Salchert

CREATIVE DIRECTOR

Derek Gaylard

CIRCULATION DIRECTOR

Pam Fulmer

CONTRIBUTING WRITERS

Franko Gregory
Dwayne Somers



PRESIDENT

Danny J. Salchert

EXECUTIVE AND ADVERTISING OFFICES

2009 Eagle Ridge Drive
Birmingham, AL 35242

phone: 205.981.4541

fax: 205.981.4544

www.epsmag.net

danny@epsmag.net

Electrical Products & Solutions™ is published twelve times a year on a monthly basis by ABD Communications, Inc., 3591 Cahaba Beach Road, Birmingham, Alabama, 35242, USA. *Electrical Products & Solutions™* is distributed free to qualified subscribers. Non-qualified subscription rates are \$57.00 per year in the U.S. and Canada and \$84.00 per year for foreign subscribers (surface mail). U.S. Postage paid at Birmingham, Alabama and additional mailing offices.

Electrical Products & Solutions™ is distributed to qualified readers in the electrical contracting industry. Publisher is not liable for all content (including editorial and illustrations provided by advertisers) of advertisements published and does not accept responsibility for any claims made against the publisher. It is the advertiser's or agency's responsibility to obtain appropriate releases on any item or individuals pictured in an advertisement. Reproduction of this magazine in whole or in part is prohibited without prior written permission from the publisher.

POSTMASTER: Send address changes to
ABD Communications, Inc., P.O. Box 382885
Birmingham, Alabama 35238-2885

PRINTED IN THE USA



**MADE
IN USA**



PRODUCTS, INC.

Productivity and value thru ideas
FOR SAFER BETTER FASTER JOBS



We're Proud to be the Electricians' Friend for Over 50 Years!

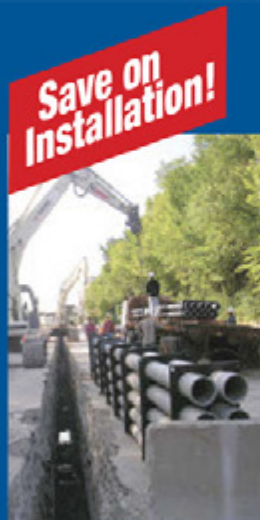
Qwik Duct Safer Better Faster

HDPE CUSTOM TEMPLATES
In Any Configuration Required

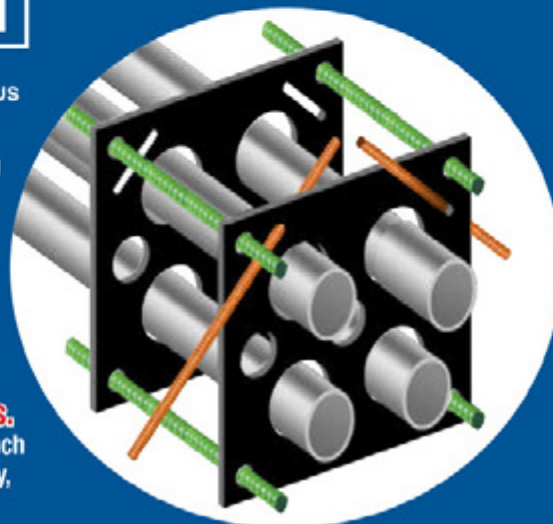
IP1



Patent
Pending



Assemble Conduit Above Trench-
No Workers Below -
Prevents Injuries and Deaths.
Also Allows Digging a Narrower Trench
for Less: Excavation, Concrete, Slurry,
Backfill & Shoring.



IP3b

Patent
Pending



PVC Offset

Sizes 1/2" thru 6"
Meets Flexible Mandrel
Test Requirements

Bore Spacers

Sizes 1/2" thru 6"
Roll assembled conduit into
caissons and under
obstructions

IP2



IP13A-F

Conduit Transition Couplings



PVC Schedule 40 & 80
*Transitions in Less Than
5 Minutes*

PATENT
PENDING



IP15

**End Bell
Adapter**
Schedule
40/80 PVC



PATENT
PENDING

Save Cost on the Rigid Nipple, Tape & Labor
Use for Entire Job - Not Just for Repair

IP14a

**1 Piece
Reaming Bit**
1/2" thru 6"
Schedule 40/80

*Plus More Being Invented for **SAFER BETTER FASTER** Jobs . . . Call With Your Ideas!*



SPPProducts.com 800-233-8595 info@SPPProducts.com

PART 1:

LED Luminaires Outperform in Demanding Industrial Facilities

HEAVY INDUSTRIAL ENVIRONMENTS such as steel mills, power generation plants, pulp and paper mills, cement production facilities, foundries, mining operations, and shipbuilding yards provide some of the biggest challenges for LED lighting systems. Excessive heat, moisture, vibration, dust and power quality fluctuations caused by harsh production processes can all contribute to premature LED failure, erasing the promised maintenance and safety benefits. These demanding industrial environments deserve only the toughest LED luminaires to deliver superior illumination with unparalleled protection and operate across your facility without incident.

Preventing Accidents

Premature lighting failures or underperforming luminaires due to the adverse effects of wet, harsh locations result in more than downtime — they can lead to very serious accidents to employees and the destruction of equipment. While a multitude of variables can contribute to an industrial accident, inadequate illumination is an often underestimated risk factor. Malfunctioning or dim lighting makes it difficult for employees to detect obstacles, exposing them to common workplace injuries such as slips,

collisions, and other similar incidents. Fatigue, eyestrain and drowsiness owing to exposure to glare, shadows or uneven illumination are also contributors to accidents, specifically in situations where precision is required. Poor lighting is responsible for hundreds, if not thousands, of serious injuries each year in areas that could be safely navigated with ease under appropriate lighting conditions. These injuries can be considered negligence with the victim often entitled to damages for injuries, lost time at work, and for pain and suffering.





Environmental Challenges

Reliable, purpose-built, industrial grade lighting is essential to improving operational efficiency, creating a safer work environment, and reducing maintenance costs. LED luminaires need to perform in environments subject to extreme temperatures, heavy vibration, corrosive atmospheres, electrical disturbances, and dust, often while running 24/7/365.

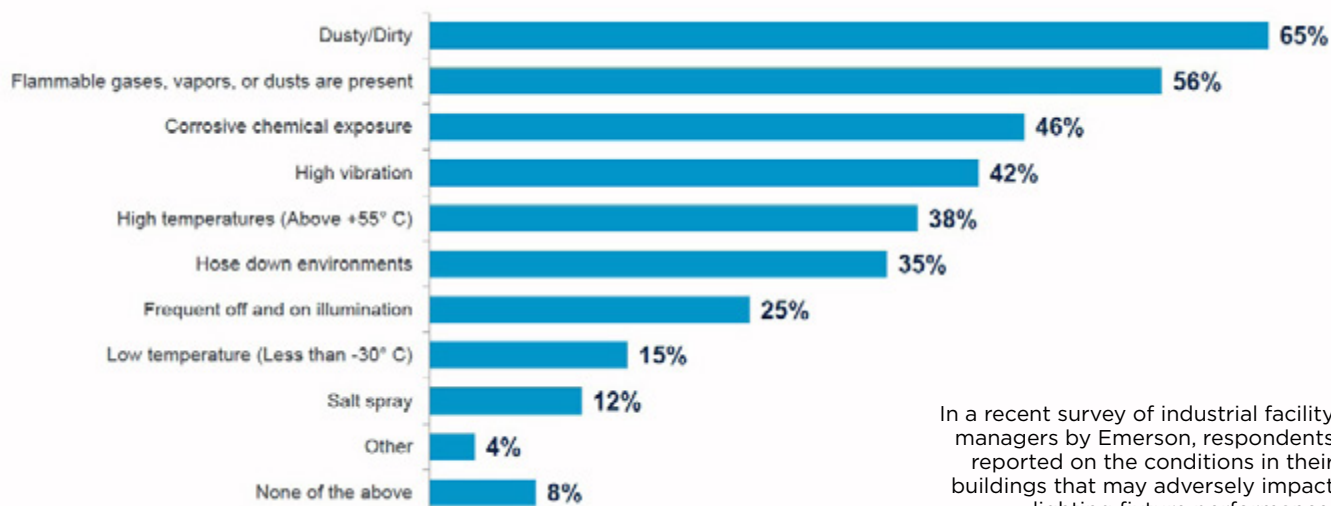
Extreme High Temperatures

LEDs convert electricity to light directly within the luminaire. They do not radiate heat, but rather retain it so dissipation must be through convection or conduction. Higher local temperatures within the luminaire result, the extent depending on the luminaire design, which can accelerate changes within the LED and in nearby electronic components.

Processing temperatures inside steel mills, glass plants, paper plants and other industrial plants can reach over 4000° F, with ceiling temperatures approaching 65°C (149°F) or greater. When selecting LED luminaires, be aware that an off-the-shelf light duty luminaire designed for a stable heat environment likely will not have the proper heat sinking and high temperature gaskets required for extreme heat installations.



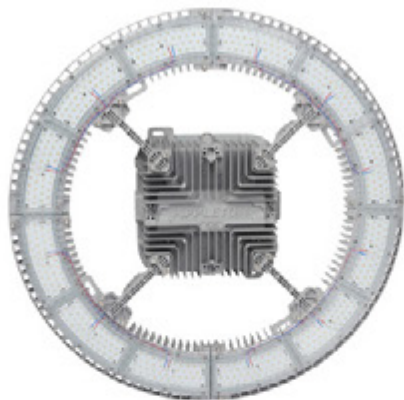
Facility Conditions



In a recent survey of industrial facility managers by Emerson, respondents reported on the conditions in their buildings that may adversely impact lighting fixture performance.



Lighting Your Way at Greater Heights



Appleton™ IHC LED Luminaire

The Appleton™ IHC LED Luminaire by Emerson is the ideal solution to deliver light from mounting heights of 50 to over 100 feet. With outputs up to 90,000 lumens, an IP66 marine and wet location rating, and an ambient temperature range of -40 °C (-40 °F) to 75 °C (167 °F), the IHC was designed to meet the demands of your harsh industrial environment and lighting requirements.

Learn more at: masteringled.com

APPLETON™

The Emerson logo is a trademark and a service mark of Emerson Electric Co. © 2021 Emerson Electric Co.


EMERSON

CONSIDER IT SOLVED™

Since electronic components are sensitive to heat, an optimal thermal design can be the determining factor for a product achieving its lifetime claims and avoiding quality issues. LED color shift, driver failures, short circuits, and more can all be tied to poor thermal design.

Corrosive and Wet Atmospheres

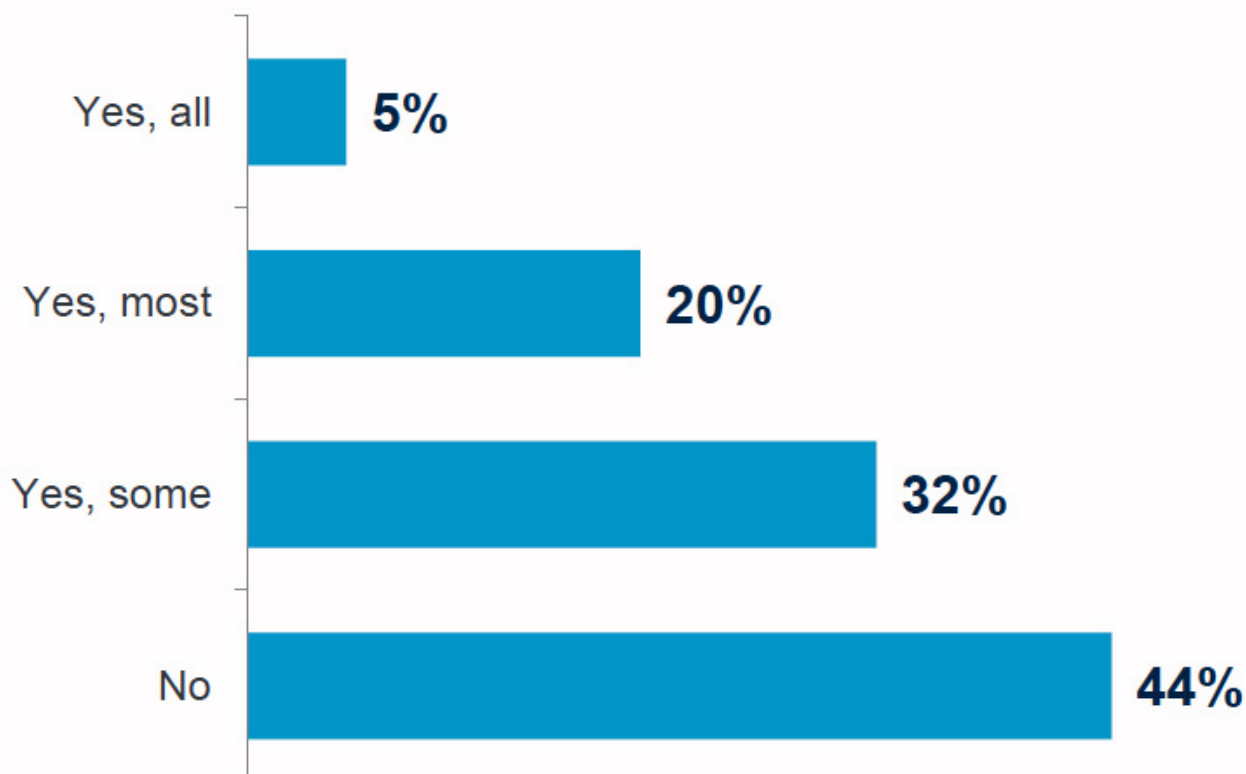
Exposure to caustic chemicals and solvents, adverse weather, salt water, and moisture will corrode unprotected luminaires, leading to premature failure. Almost 50% of all electric, electronic and mechanical component failures are caused by corrosion. The World Corrosion Organization estimates the worldwide annual cost of corrosion at \$2.2 trillion, more than 3 percent of global GDP. □

Part 2 of this article from Emerson will conclude in the July issue of *Electrical Products & Solutions* magazine.



Heat-Related Lighting Problems

56% of industrial facility managers reported lighting problems were heat-related.





Extend Luminaire Life While Reducing Energy Consumption



Appleton™ Mercmaster™ Connect LED

The Appleton™ Mercmaster™ Connect LED by Emerson is designed to illuminate hazardous and harsh industrial locations with integrated motion and illuminance sensors. Paired with Emerson's Plantweb Insight Connected Lighting Application, operators have access to lighting usage data and sustainability analytics.

The Mercmaster Connect LED provides facility managers with continuous monitoring of their LED lighting with real-time insights gained into sustainability goals, diagnostics and lumen levels from any remote location at dramatically lower costs as compared to wired alternatives, with faster installation time and minimal disruption to plant operations.

Learn more at: masteringled.com

APPLETON™

The Emerson logo is a trademark and a service mark of Emerson Electric Co. © 2021 Emerson Electric Co.



CONSIDER IT SOLVED™

Protect Yourself

Miller Safety Consultants — *A Leader in Arc Flash Protection*

Vince Miller started Miller Safety Consultants, a veteran owned business in 1999. The goal of the business was to provide cost effective safety consulting, employee training such as: confined space entry, fall protection, electrical safety and provide sales of electrical shock and flash protective equipment and fall protection equipment to businesses in the Washington DC area.

Reliance Industries provided fall protection products and much of the sales and training was on behalf of the supplier. In 2000, the owner decided to retire from his business, and Vince decided to discontinue the fall protection line of his business and concentrate more in the electrical training and products.

Vince had been a distributor for Certified Insulated Products (CIP), a manufacturer of electrical insulated tools and electrical arc flash clothing manufactured by Otex in Rochester, New York. As a distributor, Vince provided sales through his internet website and much through relationships with electrical contractors. His training was a classroom environment and was provided directly to customers but he also taught as a sub-contractor for other safety consulting companies and the

Chesapeake Safety Council in Baltimore, Maryland. In 2005, Vince partnered with Vivid Learning Systems in Cascades, Washington to provide on-line training in safe work practices.

Training in electrical safe work practices is still provided locally in the Washington DC area and as a partner with an electrical engineering firm and online. The training is based on the Occupational Health and Safety Administration (OSHA) standards and the National Fire Protection Association (NFPA) 70E standard.

Miller Safety Consultants is now a distributor for Cementex USA, Burlington, New Jersey, for insulated tools and equipment and clothing from OTEX Protective, Rochester, New York.

The majority of his sales of products are from the web-based store. Cementex

is nationally known for their quality equipment. Otex Protective is becoming more known for their quality clothing. For years, they have manufactured their products under other provider labels. Vince chose to not create his clothing line, but to sell the manufacturer product.

Vince has worked with many electrical company employees to fine-tune the clothing to be more comfortable for the user. Working closely with the manufacturer, they have made slight changes in how the cloth pattern was modified to meet final production. An example is the lightweight 40 Calorie vented hood offered by Otex.

The material is of the latest technology. The vented assembly is constructed for balance on the back of the hardhat and the airflow is 27 CFM to prevent fogging of the face shield and provide cooling to the worker. It took over a year to develop the product with the user prior to having the hood “flash tested”. This product is now standard issue with many electrical contractors.

Being a small business and having quality providers has resulted in satisfied customers for Miller Safety Consultants. Being a direct supplier for OTEX Protective, another small business means customized customer needs can be met. □

*For more information, visit
Miller Safety Consultants at:
www.electricalsafetysupply.com, email
Vince at: sales@millersafetyltd.com.*



Deluxe Maintenance Tool Kit



Class O Glove Kit

AUTHORIZED
Cementex
The Safety Tool Specialists
DISTRIBUTOR

**Give Vince a call at
(703) 367-0404**



Protect yourself from "Arc Flash"

ARC FLASH LIFT-FRONT HOOD WITH V¹² HIGH-VOLUME VENTILATOR Compact. Powerful. Reliable

Our V¹² High-Volume Ventilator boasts an unexpectedly quiet, high output (35+ CFM) turbine fan to cool and circulate the ambient air within the hood. Fully protected beneath it's durable ABS shell and added fabric layering, the V¹² High-Volume Ventilator isn't just compliant, it's superior.



40 CAL/CM2 ULTRALIGHT CLOTHING BY OTEX

Our new dual-layer Ultralight clothing takes advantage of DuPont's® dedication to scientific advancement and Westex's® industry leading dependability. Weighing in 37% lighter than traditional HRC4 PPE, our Ultralight Clothing is the most innovative contender in the lightweight arena.

HYBRID LAYERING

Combined Fabric Weight: 14 oz

Outer Layer: DuPont® Protera
Color: Navy

Inner Layer: Westex Ultrasoft
Color: Safety Orange



CALL US TODAY

(703) 367-0404

OR VISIT OUR ONLINE ELECTRICAL SAFETY EQUIPMENT STORE
www.electricalsafetysupply.com

High Performance Insulated Tools are Essential for Electrical Shock Hazards

BY FRANKO GREGORY AND DWAYNE SOMERS, CEMENTEX PRODUCTS, INC.

INSULATED HAND TOOLS are critically important to protecting personnel working in the proximity of energized equipment, but products vary greatly in performance. The highest quality tools are engineered and manufactured to durably retain their essential insulative properties.

But lower cost options are also available. Big box stores, e-commerce sites, and discount tool retailers offer insulated tools that meet minimal standards but often provide less reliability over the life of the product. This low price / low performance option is difficult to justify with the potential catastrophic human and economic consequences of electric shock and arc flash accidents.

High Quality Insulated Tools are Essential

If the insulation becomes damaged or if the tip breaks off a low-quality screwdriver, the costs of a resulting electrical accident can be enormous. An arc flash can reach temperatures of 30,000°F – hotter than the surface of the Sun. One or two deaths still occur each day in the U.S. from arc flash incidents, with average litigation costs estimated to be \$10-15M. And thousands of people are treated each year for burns from arc flash accidents, typically requiring significant time away from work or permanent disability.

Even with the safety mandates like, OSHA 1910.335 requiring that hand tools be insulated. “When working near exposed

energized conductors or circuit parts, each employee shall use insulated tools or handling equipment if the tools or handling equipment might make contact

with such conductors or parts. If the insulating capability of insulated tools or handling equipment is subject to damage, the insulating material shall be protected.” Double-insulated hand tools have that built in extra safety factor.

The requirement for insulated tools is not just for situations when the tool is making contact with an energized object, but also when entering a specifically defined proximity of an exposed energized conductor. OSHA recognizes the electrical safety guidelines within NFPA 70E. According to the 2018 Edition, Section 130.7(D) (1): Employees shall use insulated tools or handling equipment, or both, when working inside the restricted approach



SPPRODUCTS, INC.

Productivity and value thru ideas

Proud to be the Electricians' Friend for Over 50 Years!



IP26 Flat "Big O"

Box Support Plate



SAVES OVER 1 HOUR PER INSTALLATION

Prefabricated Assemblies

SAVE More Than \$1500 per Wall Outlet

PFA3



Conduit & Box Support Plates



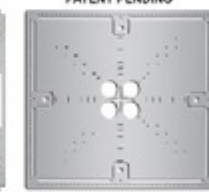
IP5
PATENTED

* IP6
PATENTED

* IP6c
PATENT PENDING

* IP7
PATENTED

IP8
PATENT PENDING



Support From Only ONE Rod Plus Eliminates Conduit Clamps
Save More Than One Hour per Installation! *

IP19 4-Conduit Block

PATENTED

Support up thru 4 conduits From ONLY 1 ROD!

SAVE OVER 30 MINUTES PER INSTALLATION



IP11

Trapeze Brackets

Original EZUTB - Size 1/2" thru 1 1/4" Conduit or equal size MC Cable.

SAVE OVER 20 MINUTES PER FOOT

TRAPEZE Eliminates ALL Conduit Clamps!



NECA SHOW STOPPER 1991

Mount Boxes on Both Sides or Between Studs

IP28a
PATENTED

Strong 16 Gauge Galvanized Steel



2 Box Flat Fixed Position

IP13a-13h

Transition Couplings



Sizes 1/2" thru 6" Schedule 40/80 Conduit

IP15
1 Piece Reaming Bit
PATENT PENDING
1/2" thru 6"

High Speed Steel for Long Life.

Installation in Less Than 5 Minutes

- Use For Entire Job - Not Just for Repair!

IP21a QwikBlock Box Support

PATENT PENDING

NEW



Accepts Both 1/4" & 3/8" Threaded Rod

NEW

Snap-ON Adjustable Back Box Support

IP18a

PATENT PENDING



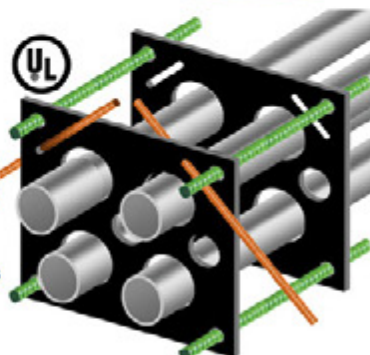
IP1

QwikDuct
HDPE CUSTOM TEMPLATES

LOWER CONDUIT FROM ABOVE
NO WORKERS BELOW PREVENTS INJURIES OR DEATHS
4,000 PSI TENSILE STRENGTH AT BREAK
OVER 12X FASTER THAN SPACERS & CHAIRS

PATENT PENDING

NECA SHOW STOPPER 2000



IP3a

End Bell Adapter



Smooth Edges Allow Trouble Free Wire Pulls.
PVC Schedule 40 & 80
Sizes 1/2" thru 6"

IP3b

PVC Offset

1/2" thru 6" Conduit
1/2" thru 2" Offset
PATENT PENDING



Plus More That Do Jobs SAFER BETTER FASTER Constantly Being Invented!



SPPProducts.com 800-233-8595 info@SPPProducts.com

boundary of exposed energized electrical conductors or circuit parts where tools or handling equipment might make unintentional contact...”

At a minimum, all insulated tools must be labeled with the international double-triangle symbol that indicates that the tool was tested to 10,000 VAC and rated for 1,000VAC/1,500VDC for working around energized parts, according to IEC 60900 and/or ASTM F1505 standards.

Reliable Long-Term Performance is Critical

These minimal manufacturing standards are important but do not always provide a reliable indication of how well a product will stand up over time. Wear and tear can degrade insulative effectiveness, and a single drop of a tool can cause micro cracks that instantly render the tool unsuitable for use on live voltages.

When selecting insulated tools, there are essentially two key ways to evaluate performance and reliability. First, at the time of purchase, look for companies with established reputations for quality – companies that make investments in building and protecting their brand with superior engineering, materials and manufacturing processes. Likewise, look for products where the tool and the coatings are manufactured in the U.S., rather in some unknown or less reputable country of origin.

And consider the warranty, a clear indication of the company’s own judgment of its product quality.

The Most Important Feature: User Warning System

The second and even more important way to evaluate tool quality is tangible and visible on the tools themselves. The two layers of coatings need to have distinctly different

.....

Quality tools also come with other features, such as the capability to apply the insulative coatings with precision to adequately cover hard-to-reach contours and to taper the coatings at the working end of the tool without compromising insulative performance.

.....

colors, so that cuts, cracks and other damage of the outer layer is readily apparent. NFPA 70E, 103.7 (D)(1)(a)(3) requires “that insulated hand tools and equipment shall be inspected prior to each use. The inspection shall look for damage to the insulation or damage that can limit the tool from performing its intended function or could increase the potential for an incident.” If the inner insulation becomes visible through the outer layer, the tool is not repairable and must be removed from service.

Quality tools also come with other features, such as the capability to apply the insulative coatings with precision to adequately cover hard-to-reach contours and to taper the coatings at the working end of the tool without compromising insulative performance.

The range of products available from a manufacturer is also an important

consideration. Optimal safety requires using precisely the right tool for each task, without having to make do with workaround solutions. You also want to have the flexibility to custom design kits with all the specific tools you do need, without having to pay for included tools that you don’t need.

While the focus is on protection from electrical shock, quality tools also afford another kind of protection: custom laser etching is effective at preventing theft, by marking the name of the owner. Unique identifiers can be etched on each tool, to track which tools have been assigned to each person or job.

“Just OK isn’t OK”

The AT&T ad campaign that “when it comes to wireless networks, just OK isn’t OK” makes a clear and compelling point, that when selecting a surgeon or a tattoo parlor, and making other critically important choices, you don’t want to compromise on quality. This principle applies to selecting PPE for extremely dangerous electrical hazards.

There are many areas in any business where cost savings can be achieved by intentionally selecting products with a lower price-performance ratio. But with high voltage PPE, the lower price / lower performance products are not worth the risks. □





Versatile Mounting for Extreme Environments



*SolaHD™ SCP-X Series Standalone
IP67 Power Supplies*

The SolaHD™ SCP-X Series Standalone IP67 Power Supplies by Emerson can be mounted almost anywhere on a machine, conveyor, or wall. With no enclosure required they offer safety against arc flash hazards.

Quick-connect cables ensure the IP67 rating and eliminate costly wiring. Available from 100 Watts to 240 Watts, the SCP-X Power Supplies meet the diverse needs of automotive manufacturing, conveyor systems, and equipment where 24 Vdc power is required for geographically dispersed devices.

Learn More at: www.solahd.com

SOLAHD™

The Emerson logo is a trademark and a service mark of Emerson Electric Co. © 2021 Emerson Electric Co.



CONSIDER IT SOLVED™

Griplock® Systems, LLC Acquires Cable Grippers, Inc.

*Griplock® Systems, LLC has completed its acquisition of
Cable Grippers, Inc. for an undisclosed amount*

Salt Creek Capital, the San Francisco Bay-Area private equity firm that purchased Griplock Systems in 2016, has completed its acquisition of the Nevada-based cable suspension company Cable Grippers, Inc. and will merge the two companies into one powerhouse cable suspension company.

“We’re very excited to be joining forces with Cable Grippers,” states Griplock Systems President and CEO Todd Hemingway. “With our combined efforts we will be in a better position to navigate the ever-changing industry

landscape and provide stronger service to our customers. Griplock Systems is a leader in cable suspension in many different industries because we offer the best and safest products at the best price, and that has allowed us to continue to grow. By adding Cable Grippers, we will increase our reach in the lighting market.”

For the time being, the two companies will continue to operate as normal, as the merging process is expected to take anywhere from eight months to a year.

“We don’t want to rush things,” states Ryan Kwast, Griplock VP of Sales and Engineering. “There are a lot of logistical items that we need to take care of before the two companies can truly operate as one. For instance, there are hundreds of parts from both companies that are near duplicates of each other. We need to assess which parts are the best value for our customers, regarding price and quality, and retire those that don’t make the cut. We want to make this as smooth of a process as possible for all our customers.” □

ABOUT GRIPLOCK SYSTEMS, LLC

Griplock Systems was founded in 1992. It’s because of their engineering expertise, high quality-control, pricing, and innovative products, that Griplock Systems is a leader in cable suspension in the areas of Architectural Lighting, Rigging, Display, Signage, Acoustic/Decorative Panels, and Art. They are committed to providing high-quality, high-performance, and budget-conscious products, backed by outstanding customer service and engineering expertise. Griplock® Systems, LLC | 1029 Cindy Lane Carpinteria, CA 93013 | 805-566-0064 | www.griplocksystems.com Cable Grippers, Inc | 6647 Schuster St, Las Vegas, NV 89118 | 702-869-0755 | www.cablegrippers.com



Electri-Flex Announces Director of Sales & Marketing

ELECTRI-FLEX COMPANY, Roselle, IL, announces the promotion of Brock Klein, National Sales Manager, to the role of Director of Sales & Marketing.

“Brock has brought new energy to the sales team and created a culture



that fosters teamwork and collaboration,” stated Jan Ruthe, COO. “His fresh insights and continuous improvement mindset will help Electri-Flex achieve continued success.”

Brock began his career in sales 13 years ago, progressively advancing through business development,

product management, and sales growth. He came to Electri-Flex 5 years ago and quickly moved from Regional Sales Manager to National Sales Manager, and now to where he is today. Navigating the sales team through difficult market volatility over the last two years, he provided strong leadership and became an integral part of the management team.

Brock has achieved many industry accomplishments, including 2016 tED Magazine “30 under 35” award winner, as well as graduating from the NAED Leadership Development Program. □

ABOUT ELECTRI-FLEX COMPANY

Electri-Flex Company, a leader in electrical conduit design and manufacture for over 65 years, produces Liqueatite®, the most diverse line of liquidtight flexible electrical conduit in the industry. The company offers custom design, engineering, quality assurance, and testing capabilities. For more information on Electri-Flex Company, call (630) 529-2920 or (800) 323-6174; fax: (630) 529-0482; e-mail: mktg@electriflex.com; visit: www.electriflex.com; or write: 222 West Central Avenue, Roselle, IL, 60172-1994.





Compact and Easy to Install DC UPS for Harsh Industrial Locations



SolaHD™ SDU DC - B Series DIN Rail UPS

The SolaHD™ SDU DC - B Series DIN Rail UPS by Emerson are perfect for mitigating power quality issues, minimizing loss of data and downtime.

The SDU DC - B UPS combines an industry leading compact design, wide operation temperature range -15 °C to +50 °C (+5 °F to +122 °F), enhanced communication and unique installation options to solve common application problems.

Learn more at: www.solahd.com

SOLAHD™

The Emerson logo is a trademark and a service mark of Emerson Electric Co. © 2021 Emerson Electric Co.



CONSIDER IT SOLVED™

RTI Integrates With Orro Intelligent Lighting Control System

New integration elevates the smart home experience by seamlessly combining lighting and system control

Leading control and automation manufacturer RTI today announced that the RTI control platform now works with Orro, integrating Orro's intelligent lighting control into any home automated by RTI. With light, motion, and sound sensing, plus elegantly designed smart switches, Orro's adaptive lighting automatically adjusts based on homeowner presence and preferences. RTI elevates this lighting performance by enabling control and automation of Orro switches from within the RTI control environment. The integration elevates control system performance by launching control and automation events triggered through Orro presence detection.

"Automated lighting control is an important aspect of the smart home, and Orro adds a level of intelligence that makes it more intuitive than ever for the homeowner," said Neal Ellsworth, Director of Product Management at RTI. "With the RTI integration, it's much more than just using the control system to automate the lighting. We're also enabling the lighting system to drive

the automation. The result is a unified system in tune with the homeowner."

Orro turns on or off lighting scenes based on presence detection, and the RTI control system can trigger automations also based on this detection. For example, when someone enters the room, not only will the lights turn on, but the music can automatically be adjusted to a preferred station and the volume brought to the desired level. When no presence is detected, the lighting scene can change, and the music can be turned off. "It makes the home feel more intuitive," continued Ellsworth.

"At Orro, we're constantly listening

to the channel and one of the most requested integrations has been with RTI," said Orro's Head of Channel Development, Patrick 'PG' Gall. "This new integration allows Orro to be a flexible tool for the dealer, adding value to RTI jobs with intelligent, proactive lighting that helps the dealer do so much more."

Standard Orro lighting control is enabled through the RTI system, creating an exceptional experience throughout the home. The homeowner can launch lighting scenes, set dimmer

levels, control lighting loads, turn individual lights or lighting groups on and off, and combine Orro Switches into groups. The Orro One and Orro S Intelligent Lighting Switches work together to create a seamless lighting system, setting the perfect mood in any home. Orro also works with popular smart bulbs and switches.

The new driver that enables the RTI-Orro integration is available to authorized RTI dealers at the RTI driver store and directly within the RTI Integration Designer 11 control application programming software. Learn more at www.rticontrol.com. □



ABOUT RTI

RTI elevates the smart home and smart business with an intuitive and powerful suite of control and automation solutions. The award-winning RTI portfolio of remotes, touchpanels, control processors and A/V distribution systems combine with the renowned RTI Integration Designer® programming software, enabling integrators to deliver exceptional and personalized control solutions to their clients. RTI solutions are available through a world-wide network of authorized dealers and distributors.

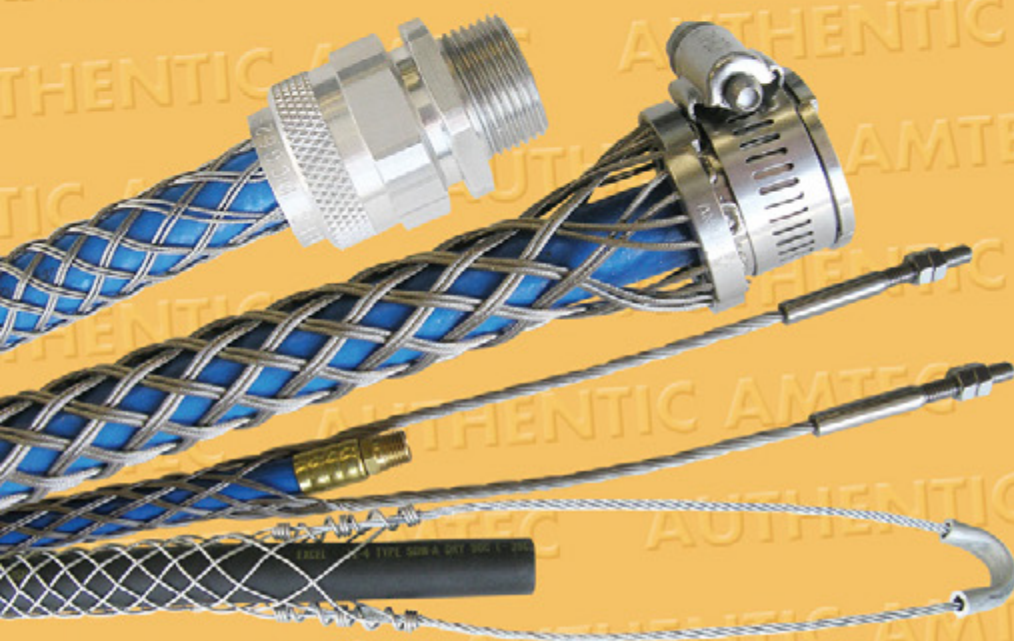


The RTI Pro Control line redefines ease of installation for single-room solutions. The elegant remote and iPad/iPhone app program in minutes with the Pro Control Studio Wizard and bring exceptional value to professionally installed systems.

More information is available at www.rticontrol.com and www.procontrol.com.

AMTEC

CORPORATION
SPECIALIZING IN QUALITY CABLE GRIPS



Made in USA



Cage Code 1RX07



1-800-893-8397
www.amtecgrips.com

Triplett Announces Major Product Line Expansion

More than seventy new leading edge specialized testers introduced

Triplett Test Equipment, a leading maker of test equipment tools, announces a major product line expansion. More than 70 new leading edge specialized testers have been introduced for the building maintenance and environmental, electrical test and measurement, network and cable testing, security and cabling equipment, hand tools, and connectors and converters markets.

Known for more than 100 years for innovative, reliable, and durable test and measurement tools and instruments, Triplett is now expanding its product line into the Building and Maintenance and Environmental industries with over 40 new instruments devoted to indoor air quality such as Particle Counters, CO/CO₂, humidity, temperature/air flow, as well as light, moisture, and water quality devices. In addition, a

dozen new cable options and tools added to the portfolio are ideal for data networks, home theater and audiovisual applications, as well as security and other cable applications. Other new instruments include high definition articulating videoscopes, ferrous and non-ferrous substrate coating thickness testers and dataloggers of various types including Vibration, Voltage, Current, Light, and Temperature/Humidity.

ABOUT TRIPLETT TEST EQUIPMENT

Founded in 1904, Triplett Test Equipment is a leading provider of innovative, reliable, and durable test and measurement tools and instruments for every technician. Triplett provides hundreds of products for a wide range of industries, including building, maintenance, and environmental; electrical test and measurement; network and cable testing; and security, closed caption television, and cabling. Benefiting from more than a century of innovation and problem-solving expert solutions, Triplett tools and instruments continue to be the cutting edge of specialized testers – without breaking the bank. Based in Manchester, NH, Triplett is a part of Jewell Instruments. To learn more, visit our website, www.triplett.com,



Johnson County High School Receives Donation of 30 Digital Multimeters from Megger for the Third Year in a Row

30 seniors in the school's Construction Department receive testers upon graduation

Megger recently donated 30 AVO830 digital Trms multimeters for the third year in a row to graduating high school seniors in the Construction Department at Johnson County High School (JCHS) located in Mountain City, Tennessee. These digital multimeters offer a voltage range up to 1000V Trms and are designed to reduce the need for additional auxiliary instrumentation, like phase rotation detectors and non-contact voltage wands.

"Many of the students who received the AVO830 are headed to either a vocational school or university to pursue a career in electrical engineering," said Lee Cole,

construction teacher at JCHS. "Having this tester in their toolbox from day one will be a big help to them. Not only will it help them when working on a project, but it will also save them from incurring a big expense as they embark on their career."

Students in Cole's class learn about the AVO830 and how it works. He does an entire lesson demonstrating the unit's wide variety of test functions, important safety features, and compares it with competitor models. "I show my students the features I like best about Megger's multimeter, including the no contact voltage, its phase checker, as well as the temperature

reading feature. The best part of the AVO830 is that it is three different meters all in one," said Cole.

Designed for use by professional electricians, technicians, service personnel and engineers, the AVO830 is compact, well-built, and reliable. It can be used for a wide range of applications, including maintenance of electrical equipment and applications, service on white goods and electrical utilities.

"We cannot thank Megger enough for its generous donation and investing in the future of our students. We really appreciate it," said Cole. □



ABOUT MEGGER

Megger is one of the world's leading manufacturers and suppliers of test and measurement equipment used within the electric power, building wiring and telecommunication industries. With research, engineering and manufacturing facilities in the USA, UK, Sweden and Germany, combined with sales and technical support in most countries, Megger is uniquely placed to meet the needs of its customers worldwide. Visit us.megger.com for more information.



REPAIR CONDUIT IN A SNAP!

No Tape • No Plastic Straps • No Metallic Straps

NO KIDDING!

*Designed especially for power, communications
and fiber optics.*



STEP 1
Remove damaged
conduit



STEP 2
Cut split duct
conduit to fit



STEP 3
Snap in
place

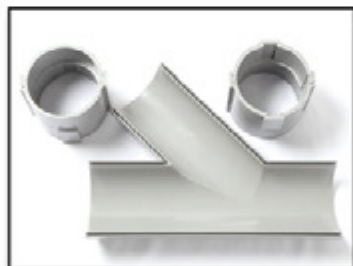


STEP 4
Attach
adapters



STEP 5
Finish job in
record time

"The World Leader In Split Conduit Products"



Conduit Repair Systems, Inc.

The World Leader In Split Conduit Products



800.670.1804 • 435.673.8724 fax • crs@conduitrepair.com • www.conduitrepair.com

DEWALT® Introduces the 20V MAX XR® Brushless 1/2-in. Drill/Driver and Hammer Drill/Driver To Deliver Optimal Power and Speed for Heavy-Duty Drilling and Fastening

Tackle demanding projects with up to 40% more unit watts out

DEWALT, a Stanley Black & Decker (NYSE: SWK) brand and leader in total jobsite solutions, today announced the new 20V MAX XR® Brushless 1/2-in. Drill/Driver (DCD800) and 20V MAX XR® Brushless 1/2-in. Hammer Drill/Driver (DCD805). Each drill's high-output brushless motor provides users with up to 40% more unit watts out in a compact design boasting a tool head that is a 1/2-in. shorter in length. These features allow for work in confined, hard to reach areas without sacrificing performance.

"DEWALT is committed to delivering new, innovative solutions that meet the demands of those in the construction industry and the trades," said Brandon Stumpf, Senior Product Manager, Stanley Black & Decker. "The upgrades to these latest DEWALT drills reflect our promise to our users to make even the most essential tools more powerful and ergonomic, ultimately contributing to more productive jobsites."

Engineered for optimal speed, control and precision, the drills feature a high-speed transmission using a variable trigger and two speed settings as well as high bit retention with a 1/2-in. metal ratcheting chuck. The 20V MAX XR® Brushless 1/2-in. Drill/Driver completes a wide range of drilling jobs with up to 2,000 rpm in second speed when drilling into construction materials. The 20V MAX XR® Brushless 1/2-in. Hammer Drill/Driver quickly drills into masonry material with up to 34,000 bpm through an integrated hammer mode function.

Each drill features an adjustable 3-Position, 3 Mode LED light producing up to 70 Lumens to enhance visibility, including LED spotlight mode, a 20-minute shut off function allowing for extended work time in dimly lit work areas. The tools also accept the Tool Connect™ chip (DCE042, sold separately) that syncs with the Tool Connect™ Site Manager app for seamless worksite asset management.

The new 20V MAX XR® Brushless 1/2-in. Drill/Driver and 20V MAX XR® Brushless 1/2-in. Hammer Drill/Driver is available as bare tools and in several kitted options.



**For more information, visit
www.dewalt.com**



**Evolution Floor Box –
New Durable Finishes**

The only floor box that works in every type of floor construction, Legrand's Evolution Series Floor Box is now available in three new durable finishes: brushed aluminum, satin brass and satin nickel.

Designed to be installed with ease, the Evolution Series Floor Box offers endless benefits including easy interior access, high capacity furniture feed, and now three new finishes that are as aesthetically pleasing as they are strong offering superior resistance to scuffs and scratches.

**For more information, visit
www.legrand.us/wiremold/evolution-floor-box**

DRIVEN TO DELIVER

THE CONSOLE X



- Clean up those cabs and get your fleet organized!

Your Total Mobile Office Solution

The Truck Console-X combines your Laptop Work Station, Radios, Speakers, Cables, Storage and Cup Holders. No Drill Installation Brackets Included.

The **Truck Console -X** is the latest innovative mobile office solution to join the Mobile Desk brand family of products. This complete control, communication and convenience Utility Truck Console is becoming the new standard for fleets of all sizes. The design of the **Truck Console -X** has originated from our years of experience working directly with the lineman, supervisors, communications, and fleets of some of the most notable utility companies in America. Loaded with standard and optional features that maximize ergonomics, productivity, and fleet/telecom standards into one Mobile Office Solution.

Screen Out™ SCREEN-DISABLER™

Blanks your screen while you drive!

Our Patented Screen Out App **Stops texting** while driving for all employees on all tablets, laptops and smart phones that run Windows, iOS or Android Operating Systems. **It's that easy!**

877-663-3375 Ext 303. www.screenout.net

Find us on:



MOBILEDESK
MOBILE OFFICE SOLUTIONS

1-877-663-3375

www.mobiledesk.com

©2018 Mobiledesk



**MADE
IN USA**



PRODUCTS, INC.

Productivity and value thru ideas

FOR SAFER BETTER FASTER JOBS

2021 NECA
ShowStopper
WINNER

Transition Couplings



**PVC Schedule 40 & 80 to
Inside PVC to Inside PVC
When Exiting Concrete Slab**

**Save
at Least
1 Hour per
Installation.**

NEW

**Transitions in
Less Than 5 Minutes!**

**Save Cost on the Rigid
Nipple, Tape & Labor**

**Use for Entire Job -
Not Just for Repair**



PATENTED

1/2" thru 6"

Transition Couplings

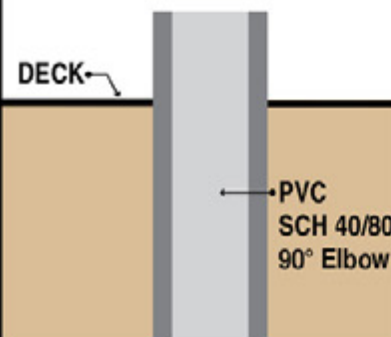
Size	Catalog #
1/2"	50PVC-IN/PVC-IN
3/4"	75PVC-IN/PVC-IN
1"	100PVC-IN/PVC-IN
1 1/4"	125PVC-IN/PVC-IN
1 1/2"	150PVC-IN/PVC-IN
2"	200PVC-IN/PVC-IN
2 1/2"	250PVC-IN/PVC-IN
3"	300PVC-IN/PVC-IN
3-1/2"	350PVC-IN/PVC-IN
4"	400PVC-IN/PVC-IN
5"	500PVC-IN/PVC-IN
6"	600PVC-IN/PVC-IN

All Above Meet UL651
CSA C22.2, No.85 and
US Army Corps Engineers
Specifications

All SP Products Inc.
Transition Fittings are
manufactured for
installation to either
meet or exceed
in accordance with
NEMA TC2, TC3 or
UL 651 specifications

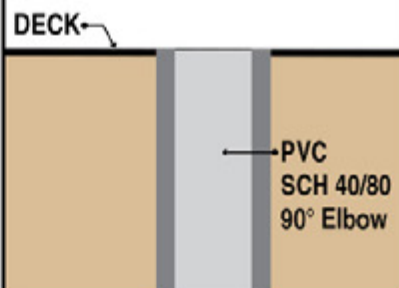


STEP 1



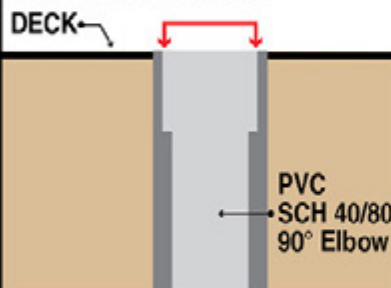
STEP 2

Cut SCH 40/80 PVC Elbow
Flush to Deck



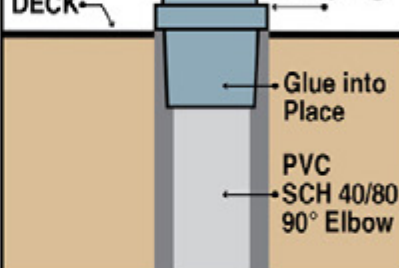
STEP 3

Ream out 1/2 of wall thickness
SCH 40/80 PVC Elbow



STEP 4

Insert
Specified
Transition
Coupling



See Our
Conduit Plug
See page IP16



See Our
REAMING BITS for
Transition Couplings



See page IP15

SP PRODUCTS, INC
Productivity and value thru ideas



**PATENT PENDING
PATENTED**

LABELS APPLY TO PRODUCTS ONLY WHERE SHOWN ABOVE



730 Pratt Boulevard • Elk Grove Village, IL 60007
P: (847) 593-8595 • F: (847) 593-8629 • Toll-free (800) 233-8595
E: info@spproducts.com • www.spproducts.com

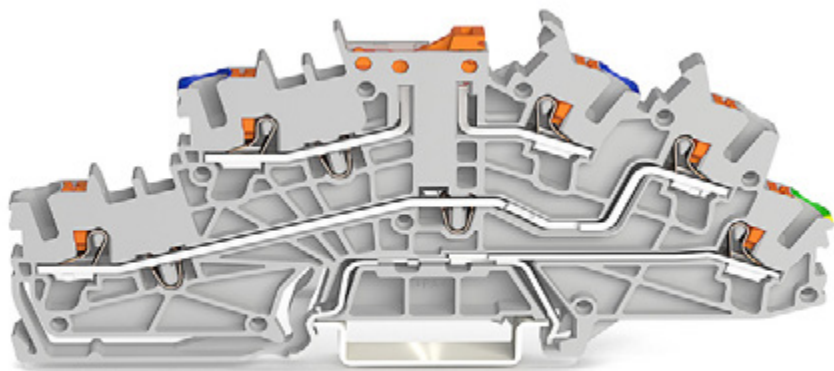
IP13k



CorePro Glass LED HID Replacement Lamps

Signify's Philips CorePro Glass LED HID replacement lamps enable you to bypass the ballast and seamlessly transition to LED. Built with High-Power LED filament technology, these lamps have the same look and feel as traditional HID bulbs without sacrificing performance. You can enjoy high-quality, uniform illumination up to 6,000 lumens per watts. These bulbs deliver long-lasting, energy-efficient light, helping you reach your sustainability goals while unleashing cost savings with a low initial investment. They offer a CRI of 80 and operational temperature range of -20-45°C to fit in a variety of application areas. Indoor or outdoor, you can place these flexible lamps anywhere.

For more information, visit
www.usa.lighting.philips.com

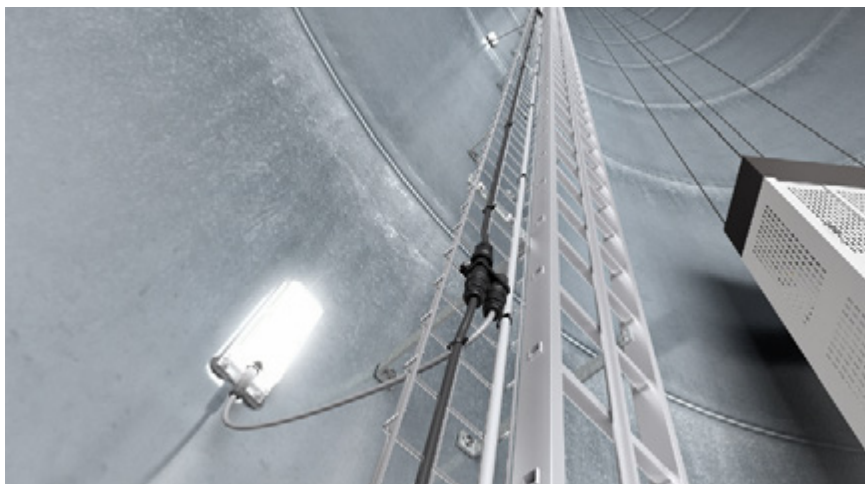


New Multi-level Terminal Blocks Provide Space Savings & Functionality

The range of WAGO's TOPJOB® S multi-level installation terminals has expanded with the addition of push-button and hybrid variants. This offering allows for fusing or blade-style disconnect, as well as direct ground connection to the DIN rail, all in one terminal block. These terminals share accessories with the rest of the TOPJOB® S family, and conductor termination is fast and simple thanks to Push-in CAGE CLAMP®.

In addition to the choice between open-tool slot and push button, these terminal blocks are also available as a hybrid solution of the two actuation types, allowing users to choose which is best for field wiring. Utilized to save space in industrial applications such as the process industry, this product provides various through terminal blocks in the same profile, giving assemblies a clean, seamless look.

For more information, visit
www.wago.com/us/press-contact



Lighting for Wind Power Plants

When it comes to maintaining wind power plants, reliable lighting is absolutely vital for personnel safety. This applies not only to all the work areas, but also to the escape route. To enable manufacturers, tower builders, and wind farm operators to meet the associated, standardized requirements, Wieland Electric provides comprehensive support in the form of well-designed lighting solutions and services.

Whether inside the tower, turbine building, or rotor head – basically anywhere where wind power plants require reliable lighting, Wieland Electric offers sophisticated and customized solutions for international use. Alongside maximum availability thanks to a ready-to-install, uninterruptible power supply (UPS), the systems also boast easy, quick, and error-free assembly, which is achieved due to the pluggability and prefabrication of the components.

For more information, visit
www.wieland-americas.com

First there was 4 square... and now the **REVOLUTIONARY 5 Square®** Box!!

You've struggled with 4 Square boxes for years - you know how small, cramped and time consuming they are. Finally, there is a solution that allows you the space you have always needed.

The **5 Square®** Boxes (5" x 5" x 2-7/8") provide up to 88 in³ of interior volume which more than doubles that of most existing boxes on the market.

Create a robust and unrivaled infrastructure for the life of your facility with the **5 Square®** Products!



Fire Signal



- TWICE THE VOLUME AS MOST BOXES
- SAVE LABOR...INCREASE PROFITS
- ELIMINATES TROUBLESHOOTING TIME AND COST
- FULLY UPGRADEABLE SYSTEM
- SPECIFIED BY ENGINEERING FIRMS, HOSPITALS, UNIVERSITIES & GOVERNMENT AGENCIES
- AVAILABLE IN ZINC OR RED

Telecommunications



- INTEGRAL CABLE MANAGEMENT
- SAVE LABOR...INCREASE PROFITS
- FACILITATES MIN. BEND RADIUS REQUIREMENTS
- SUPPORTS CURRENT AND EVOLVING SYSTEMS
- SUPPORTS PoE PLUS
- SPECIFIED BY ENGINEERING FIRMS, HOSPITALS, UNIVERSITIES & GOVERNMENT AGENCIES

WANTED

High Lumen LED Filament Imposters

CRIMES

Impersonating TCP's industry-leading filaments while delivering inferior illumination and a shorter lifespan.

LUMENS PER WATT

TCP High Lumen LED Filament Lamps

200

The Imposters

170

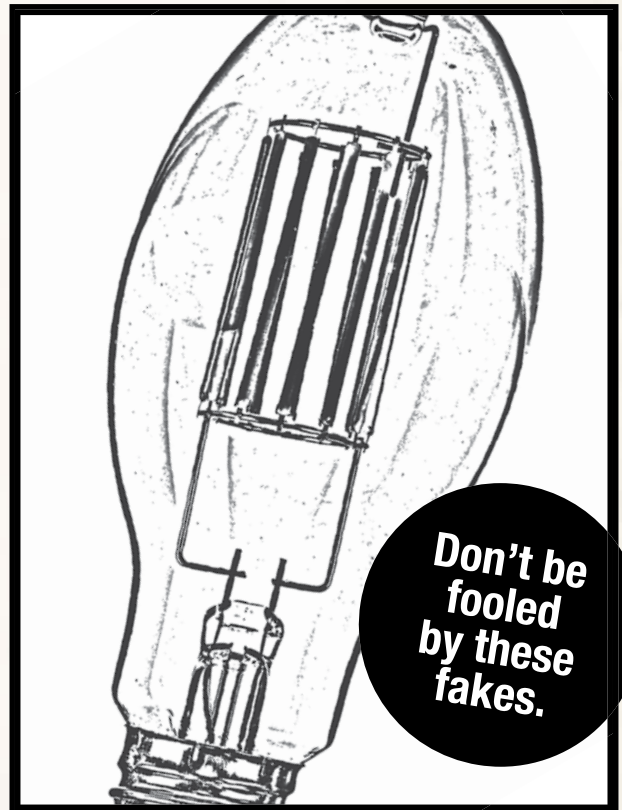
RATED LIFE

TCP High Lumen LED Filament Lamps

50,000 Hrs.

The Imposters

25,000 Hrs.



MULTIPLE SIZES AND COLOR TEMPERATURES:



TCP High Lumen
LED Filament Lamps



The
Imposters



Get the real deal with TCP High Lumen LED Filament Lamps – more lumens, longer rated life and multiple sizes and color temperatures.

Learn more at TCPI.com/corn-cob-killers
or call 888.399.4217



runtal

Electric Heating Products that Have No Equal!

runtal has long been world-renowned as the premium manufacturer of Euro-style radiators for hot water and steam heating systems. We are pleased to introduce a Runtal Electric line that includes Baseboard, Wall Panel and Towel Radiator designs.

Suitable for both retro-fit and new construction, Runtal Electric products provide a very efficient and comfortable radiant heat. They are an excellent source of primary or supplemental heat and a problem-solver for areas needing additional heat.

They are attractive (available in over 100 colors), durable and easy to install.

For contractor discounts, for more information or to place an order, please call 1-800-526-2621.



Baseboards



Towel
Radiators



Wall Panels

runtal
RADIATORS
Warmth by Design

187 Neck Road, PO Box 8278
Ward Hill, MA 01835
Tel: 1-800-526-2621
www.runtalnorthamerica.com



Wireless Area Lighting Interface for Efficient, Cost-Effective Parking lot and AREa lighting Control

WALI, Wireless Area Lighting Interface systems, from Sunrise Technologies give building owners and facility managers tremendous flexibility for parking lot lighting control while reducing energy consumption and cost by automatically dimming during off-peak hours or when not occupied. Keeping lot lighting to a minimum when not occupied is an effective way to reduce light trespass and light pollution which demonstrate care and concern for the ecology as well as abutters and neighbors.

WALI control nodes are the key components to WALI systems. They are available in 7-pin Twistlock or Wall-Pack configurations, for use with standard (105-305VAC) or high-voltage (310-530VAC) fixtures. An optional Occupancy (Occ)/Motion sensor allows parking lots to be modestly lit after hours, then adjust to full brightness, or to a user set percentage, when a person or vehicle enters the area, thereby further reducing power consumption and electricity costs.

WALI systems are fully scalable and easy-to-deploy as stand-alone parking lot controls, or large integrated multi-site systems controlled under a single executive dashboard. If BMS (Building Management System) integration is needed, WALI can integrate through a BACnet connector. WALI systems also can be programmed with multiple zone configurations. This allows operators of larger lots or facility campuses to design custom lighting control configurations for each specific area to achieve maximum energy savings while still providing a safe, well-lit area.

Sunrise General Manager Mauricio Familiar commented, "Building owners and managers have been quick to embrace the WALI product line. We can't underestimate the importance of reducing energy consumption. It's a major objective across a wide range of industries. WALI systems are an easy-to-deploy solution that helps to meet that worthy goal."

WALI Systems are commonly deployed at office parking lots, car dealerships, shopping malls, warehouse and distribution centers, military base facilities, hospitals and emergency care centers, and college campuses. They provide tremendous flexibility for lighting control with both pre-scheduled and manual override capabilities via web browsers and mobile device apps. The addition of Occ/Motion sensor integration fills a great need to conserve energy and reduce carbon footprint.

**For more information, visit
www.sun-tech.biz**

Leviton Introduces New SmartlockPro® Self-Test GFCI Combination USB Type A/Type C In-Wall Charger

New device combines Leviton's industry-leading GFCI protection coupled with powerful USB charging

Leviton recently announced the introduction of its new SmartlockPro Self-Test GFCI Combination USB Type A/Type C In-Wall Charger. This device combines the trusted ground-fault protection of Leviton GFCI technology with two high-powered USB ports – one Type A port and one Type C port – to deliver maximum power for faster charging and up to two times more power than competitive devices.

"With two leading technologies in a single unit, our new GFCI Combination USB Type A/Type C In-Wall Charger offers a convenient and space-saving way to add a powerful USB charging station to areas of the home that require GFCI protection by the National Electrical Code® (NEC®), including kitchens and bathrooms," said William Randall, director of product management, Leviton. "Every Leviton USB In-Wall Charger features a smart chip which recognizes and optimizes the charging requirements of the connected device – ensuring devices charge fast and efficiently."

The 4.8A USB offers 24W of total power. Overcurrent protection on the two USB ports help protect electronics from receiving too much power, which can damage devices. It is compatible with USB 3.1, 3.0, 2.0, and 1.1 devices.

As with Leviton's full line of GFCIs, this model is engineered to meet the latest UL standard for auto-monitoring (self-test) by periodically conducting an automatic internal test to confirm that protected power is available. If the GFCI detects a problem, one or more of the following will occur:

- Power will be denied (trip with the inability to reset)
- The outlet will trip with the ability to reset. This is subject to the next auto-monitoring test cycle or device will repeatedly trip
- Visual and/or audible indication

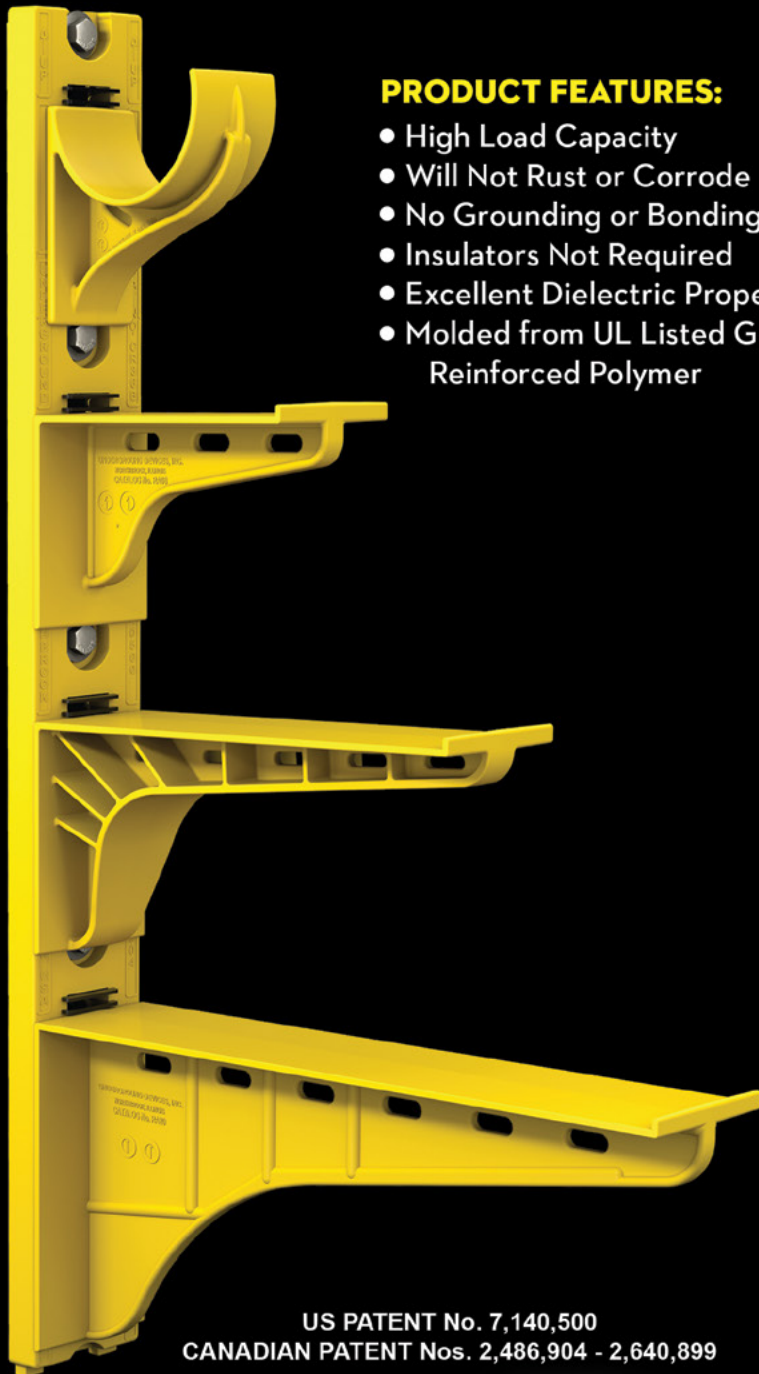


**To learn more, visit
www.leviton.com/usb**

The Heavy Duty Nonmetallic CABLE RACK



For Power and Communications Manholes And Vaults



PRODUCT FEATURES:

- High Load Capacity
- Will Not Rust or Corrode
- No Grounding or Bonding
- Insulators Not Required
- Excellent Dielectric Properties
- Molded from UL Listed Glass Reinforced Polymer



HDL Arm Lock shown with
RA04 Arm and CR36-B Stanchion



3HDS - 3" throat saddle shown with
a cable secured by cable ties.



RA08 - 8" arm shown with three
cables secured by cable ties.

US PATENT No. 7,140,500
CANADIAN PATENT Nos. 2,486,904 - 2,640,899

UNDERGROUND DEVICES
INCORPORATED



420 ACADEMY DRIVE
NORTHBROOK, IL 60062
Phone: 847-205-9000 • Fax: 847-205-9004
Website: www.udevices.com


This advertiser index is compiled as a courtesy to our readers. While every effort is made to provide a complete and accurate listing of companies and page numbers, the publisher is not responsible for errors.

Company	PG#	Company	PG#
AMTEC CORPORATION	19	RANDL INDUSTRIES	27
APPLETON / EMERSON	7	RUNTAL NORTH AMERICA	29
APPLETON / EMERSON	9	SOLAHD / EMERSON	15
CONDUIT REPAIR SYSTEMS	21	SOLAHD / EMERSON	17
GREAVES USA	BC	SP PRODUCTS INC	3
ITOOLco	IFC	SP PRODUCTS INC	13
KRENZ & COMPANY	32	SP PRODUCTS INC	24, 25
MILLER SAFETY CONSULTANTS, LTD	11	TCP	28
MOBILE DESK	23	UNDERGROUND DEVICES	31
POWERSIGHT / SUMMIT TECHNOLOGY, INC	IBC		

When it comes to transformer cooling fans, Krenz-Vent is the industry recognized gold standard. Our leadership position is earned through 80+ years of R&D plus our superior engineering and customer service. You can rest easy when you specify Krenz fans.

ENGINEERED TO COOL

There is no comparison.



KRENZ & COMPANY, INC.

KRENZVENT.COM • 262.255.2310 • KRENZ@KRENZVENT.COM

ALL THE INFORMATION YOU NEED IS JUST A CLICK AWAY AT

WWW.EPSMAG.NET



Electrical Products & Solutions

HOME ARTICLES NEWS VIDEOS PRODUCTS SUBSCRIBE CONTACT

Versatile, Low-cost Insulation Resistance Testing

WHAT'S NEW

Conduit Repair Systems, Inc.
The World Leader in Split Conduit Products

Enhanced LED Linear Vaportight Now Available from Barron Lighting Group

DEWALT® Launches New TOUGHSERIES™ Hand Tools, Redefining The Standard Of Tough

Emerson LED Emergency Exit Lighting Helps Manufacturing Plants Offer Safer Workspaces



Power Quality Analyzers & Loggers

MONITOR ANY POWER SOURCE OR LOAD

VERIFYING BACKUP POWER
LOAD STUDIES
COST & ENERGY ANALYSIS
MEDIUM VOLTAGE MOTORS
POWER QUALITY
COMMISSIONING
HARMONIC DISTORTION
PREDICTIVE MAINTENANCE
DC POWER TESTING
400HZ MONITORING
AND MUCH MORE



COMPACT - CAPABLE - VERSATILE POWER ANALYZERS

IT'S ALL WE DO.

BUY • RENT • TRADE IN

SCAN ME



The World's Only
Medium Voltage
Direct Connect
Solution



Made in USA
with US &
Imported Parts

Products in Stock!



Most Orders Ship
in 1-2 Days!

PowerSight.com • sales@powersight.com • 1-925-444-7027

***Making perfect
connections has
never been simpler.
In fact, now it's a
SNAP!***

NEW **SNAP Connectors** from Greaves. A revolutionary compression connector concept that gets the job done with just a few turns of a standard wrench!

- ▶ Time-saving, easy installation
- ▶ Superior pull-out strength and conductivity
- ▶ No bulky and costly tools and dies



GREAVES

860-664-4505 | 800-243-1130 | www.greaves-usa.com | info@greaves-usa.com