



Electrical

Products & Solutions™

The Purchasing Guide for Electrical Contractors

JUNE 2023

www.epsmag.net

**Seattle-Based
Community-Owned
Utility Invests in LED
Streetlight Upgrade
to Improve Safety
and Efficiency**

CORDLESS CANNON 6K

iTOOLco.

WWW.iTOOLco.com | 865.670.3713



Speed, versatility, and performance are all yours with iTOOLco's Cordless Cannon 6K™. This portable 6,000 lb. puller is intuitively designed to handle all of your day-to-day wire pulls.

The built-in capstan switch automatically turns the puller on and off. Simply tug on the rope to start the pull and slack off the rope to shut it down. Delivers dynamic performance in remote locations or areas where power is not yet available.



DRIVEN TO DELIVER

THE CONSOLE X



- Clean up those cabs and get your fleet organized!

Your Total Mobile Office Solution

The Truck Console-X combines your Laptop Work Station, Radios, Speakers, Cables, Storage and Cup Holders. No Drill Installation Brackets Included.

The **Truck Console -X** is the latest innovative mobile office solution to join the Mobile Desk brand family of products. This complete control, communication and convenience Utility Truck Console is becoming the new standard for fleets of all sizes. The design of the **Truck Console -X** has originated from our years of experience working directly with the lineman, supervisors, communications, and fleets of some of the most notable utility companies in America. Loaded with standard and optional features that maximize ergonomics, productivity, and fleet/telecom standards into one Mobile Office Solution.

Screen Out™ SCREEN-DISABLER™
Blanks your screen while you drive!

Our Patented Screen Out App **Stops texting** while driving for all employees on all tablets, laptops and smart phones that run Windows, iOS or Android Operating Systems. **It's that easy!**

877-663-3375 Ext 303. www.screenout.net

Find us on:



MOBILEDESK
MOBILE OFFICE SOLUTIONS

1-877-663-3375

www.mobiledesk.com

©2018 Mobiledesk



COMPANY PROFILE

6 Protect Yourself
Miller Safety Consultants —
A Leader in Arc Flash Protection

COVER STORY

8 Seattle-Based Community-Owned Utility Invests in LED Streetlight Upgrade to Improve Safety and Efficiency
Sun Valley Lighting Gothic-Style LEDs Outperform Competition in Five-Year Pilot Study

FEATURE ARTICLE

14 Industrial-Grade VIZZ Headlamps Maximize Safety, Reliability
The rugged series offers exceptional brightness and longevity with dimmability – and even an intrinsically safe option for potentially hazardous settings

DEPARTMENTS

18 INDUSTRY NEWS
24 NEW PRODUCTS
32 AD INDEX

ON THE COVER

Photo courtesy of Sun Valley Lighting



Electrical Products & Solutions™
The Purchasing Guide for Electrical Contractors www.epsmag.net

PUBLISHER
Danny J. Salchert

OFFICE MANAGER
Anita Salchert

CREATIVE DIRECTOR
Derek Gaylard

CIRCULATION DIRECTOR
Pam Fulmer



PRESIDENT
Danny J. Salchert

EXECUTIVE AND ADVERTISING OFFICES
2009 Eagle Ridge Drive
Birmingham, AL 35242
phone: 205.981.4541
www.epsmag.net
danny@epsmag.net

Electrical Products & Solutions™ is published twelve times a year on a monthly basis by ABD Communications, Inc., 3591 Cahaba Beach Road, Birmingham, Alabama, 35242, USA. *Electrical Products & Solutions™* is distributed free to qualified subscribers. Non-qualified subscription rates are \$57.00 per year in the U.S. and Canada and \$84.00 per year for foreign subscribers (surface mail). U.S. Postage paid at Birmingham, Alabama and additional mailing offices. *Electrical Products & Solutions™* is distributed to qualified readers in the electrical contracting industry. Publisher is not liable for all content (including editorial and illustrations provided by advertisers) of advertisements published and does not accept responsibility for any claims made against the publisher. It is the advertiser's or agency's responsibility to obtain appropriate releases on any item or individuals pictured in an advertisement. Reproduction of this magazine in whole or in part is prohibited without prior written permission from the publisher.

POSTMASTER: Send address changes to ABD Communications, Inc., P.O. Box 382885 Birmingham, Alabama 35238-2885

FOLLOW US ON



MADE IN USA



PRODUCTS, INC.
Productivity and value thru ideas
FOR SAFER BETTER FASTER JOBS



We're Proud to be the Electricians' Friend for Over 50 Years!

Qwik Duct
Safer Better Faster

HDPE CUSTOM TEMPLATES
In Any Configuration Required

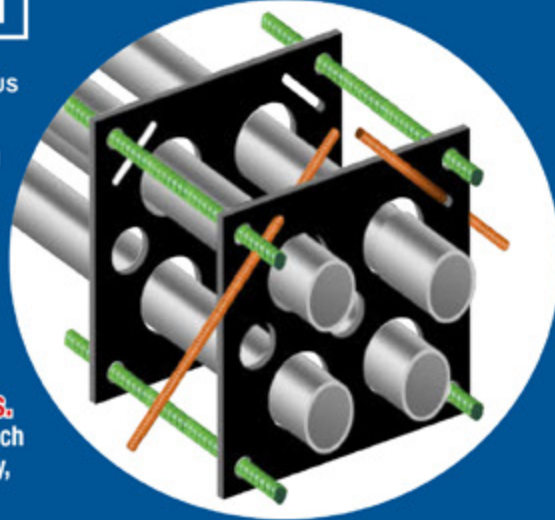
Save on Installation!



IP1



Patent Pending



Assemble Conduit Above Trench-
No Workers Below - Prevents Injuries and Deaths.
Also Allows Digging a Narrower Trench for Less: Excavation, Concrete, Slurry, Backfill & Shoring.

IP3b

Patent Pending



PVC Offset

Sizes 1/2" thru 6"
Meets Flexible Mandrel Test Requirements

Bore Spacers

Sizes 1/2" thru 6"
Roll assembled conduit into caissons and under obstructions

IP2



IP13A-F

Conduit Transition Couplings



IP15
End Bell Adapter
Schedule 40/80 PVC



Patent Pending

PVC Schedule 40 & 80
Transitions in Less Than 5 Minutes

PATENT PENDING



IP14a

1 Piece Reaming Bit
1/2" thru 6"
Schedule 40/80

Plus More Being Invented for SAFER BETTER FASTER Jobs . . . Call With Your Ideas!



SPProducts.com 800-233-8595 info@SPProducts.com

REPAIR CONDUIT IN A SNAP!

No Tape • No Plastic Straps • No Metallic Straps

NO KIDDING!

*Designed especially for power, communications
and fiber optics.*



STEP 1
Remove damaged
conduit



STEP 2
Cut split duct
conduit to fit



STEP 3
Snap in
place

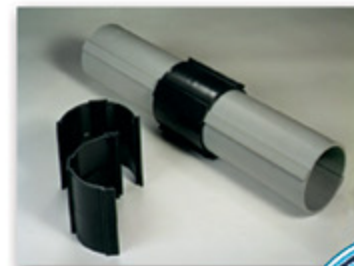
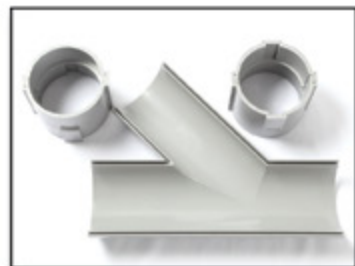
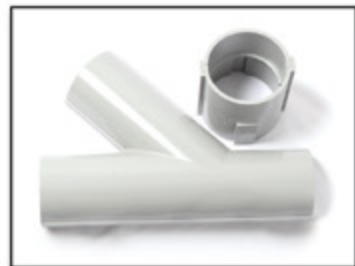


STEP 4
Attach
adapters



STEP 5
Finish job in
record time

“The World Leader In Split Conduit Products”

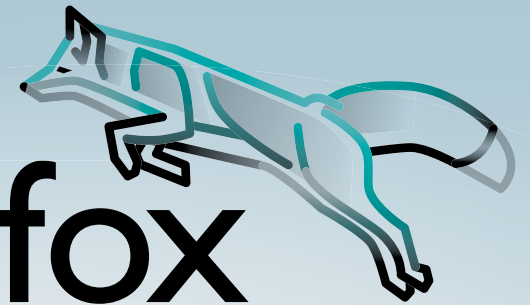


Conduit Repair Systems, Inc.
The World Leader In Split Conduit Products



800.670.1804 • 435.673.8724 fax • crs@conduitrepair.com • www.conduitrepair.com

THE
TOOL fox



TOOLS you can TRUST

Partner with the **TOOL fox** to take advantage of these benefits:

- Robust, durable, and ergonomic industrial wire-processing hand tools
- Cut, strip, and crimp with consistent high-caliber results
- UL Listed when used with Phoenix Contact's quality ferrules
- Backed by a dedicated sales team and technical service
- Covered by a limited lifetime warranty

For more information and videos, please visit
www.phoenixcontact.com/us-TOOLfox.



© PHOENIX CONTACT 2023

Protect Yourself

Miller Safety Consultants — A Leader in Arc Flash Protection

Vince Miller started Miller Safety Consultants, a veteran owned business in 1999. The goal of the business was to provide cost effective safety consulting, employee training such as: confined space entry, fall protection, electrical safety and provide sales of electrical shock and flash protective equipment and fall protection equipment to businesses in the Washington DC area.

Reliance Industries provided fall protection products and much of the sales and training was on behalf of the supplier. In 2000, the owner decided to retire from his business, and Vince decided to discontinue the fall protection line of his business and concentrate more in the electrical training and products.

Vince had been a distributor for Certified Insulated Products (CIP), a manufacturer of electrical insulated tools and electrical arc flash clothing manufactured by Otex in Rochester, New York. As a distributor, Vince provided sales through his internet website and much through relationships with electrical contractors. His training was a classroom environment and was provided directly to customers but he also taught as a sub-contractor for other safety consulting companies and the

Chesapeake Safety Council in Baltimore, Maryland. In 2005, Vince partnered with Vivid Learning Systems in Cascades, Washington to provide on-line training in safe work practices.

Training in electrical safe work practices is still provided locally in the Washington DC area and as a partner with an electrical engineering firm and online. The training is based on the Occupational Health and Safety Administration (OSHA) standards and the National Fire Protection Association (NFPA) 70E standard.

Miller Safety Consultants is now a distributor for Cementex USA, Burlington, New Jersey, for insulated tools and equipment and clothing from OTEX Protective, Rochester, New York.

The majority of his sales of products

are from the web-based store. Cementex is nationally known for their quality equipment. Otex Protective is becoming more known for their quality clothing. For years, they have manufactured their products under other provider labels. Vince chose to not create his clothing line, but to sell the manufacturer product.

Vince has worked with many electrical company employees to fine-tune the clothing to be more comfortable for the user. Working closely with the manufacturer, they have made slight changes in how the cloth pattern was modified to meet final production. An example is the lightweight 40 Calorie vented hood offered by Otex.

The material is of the latest technology. The vented assembly is constructed for balance on the back of the hardhat and the airflow is 27 CFM to prevent fogging of the face shield and provide cooling to the worker. It took over a year to develop the product with the user prior to having the hood "flash tested". This product is now standard issue with many electrical contractors.

Being a small business and having quality providers has resulted in satisfied customers for Miller Safety Consultants. Being a direct supplier for OTEX Protective, another small business means customized customer needs can be met. □

For more information, visit
Miller Safety Consultants at:
www.electricalsafetyproducts.com, email
Vince at: sales@millersafetyltd.com.

AUTHORIZED
Cementex
The Safety Tool Specialists
DISTRIBUTOR

Give Vince a call at
(703) 367-0404



Deluxe Maintenance Tool Kit



Class O Glove Kit

Protect yourself from "Arc Flash"

ARC FLASH LIFT-FRONT HOOD WITH V¹² HIGH-VOLUME VENTILATOR
Compact. Powerful. Reliable

Our V¹² High-Volume Ventilator boasts an unexpectedly quiet, high output (35+ CFM) turbine fan to cool and circulate the ambient air within the hood. Fully protected beneath it's durable ABS shell and added fabric layering, the V¹² High-Volume Ventilator isn't just compliant, it's superior.



40 CAL/CM2 ULTRALIGHT CLOTHING BY OTEX

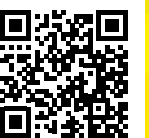
Our new dual-layer Ultralight clothing takes advantage of DuPont's® dedication to scientific advancement and Westex's® industry leading dependability. Weighing in 37% lighter than traditional HRC4 PPE, our Ultralight Clothing is the most innovative contender in the lightweight arena.

HYBRID LAYERING

Combined Fabric Weight: 14 oz

Outer Layer: DuPont® Protera
Color: Navy

Inner Layer: Westex Ultrasoft
Color: Safety Orange



CALL US TODAY
(703) 367-0404
OR VISIT OUR ONLINE ELECTRICAL SAFETY EQUIPMENT STORE
www.electricalsafetyproducts.com

Seattle-Based Community-Owned Utility Invests in LED Streetlight Upgrade to Improve Safety and Efficiency

Sun Valley Lighting Gothic-Style LEDs Outperform Competition in Five-Year Pilot Study

OPERATING AS THE LONGEST RUNNING residential and business conservation program in the country, Seattle City Light continues to invest in energy efficiency. Seattle City Light is a community-owned, not-for-profit utility that provides carbon-neutral electricity that is generated primarily from carbon-free hydropower. Its focus is on providing affordable, reliable, and environmentally responsible energy services every day to power the homes, businesses, and communities it serves.

Recently, the not-for-profit utility completed a pilot program to improve customer safety, reduce carbon emissions and conserve resources

by testing LED streetlight fixtures in Seattle's Windermere neighborhood.

The previous high-pressure sodium (HPS) streetlights were aging and due

for replacement. Seattle City Light wanted to replace 300 Gothic style HPS fixtures with efficient, environmentally friendly and functional LED fixtures. Since not all LEDs are the same, the pilot program involved testing five fixtures within the Windermere neighborhood to select the most efficient lighting solution. The new fixtures were evaluated for appearance, historical integrity and light levels.

The objective of the new streetlights was to improve the quality of lighting as a means of enhancing both pedestrian and traffic safety. Seattle City Light also wanted to reduce greenhouse gas emissions with the switch to LEDs.



Since LEDs are more efficient and perform longer than HPS fixtures, Seattle City Light calculated that changing the streetlights would reduce approximately 20,000 tons of carbon emissions each year as the result of fewer service vehicle trips needed to repair or replace the lighting fixtures.

The pilot program covered five years

of analysis to determine the best lighting solution for the community. The key pilot project decision-makers included lighting designers, city officials, standards engineers, program managers, installers, maintenance crews and, most importantly, the neighborhood association which would live under the fixtures for many years. In fact, the

pilot program provided an opportunity for community feedback that impacted which fixture would be chosen.

Energy Efficient, Environmentally Friendly

After an extensive evaluation, Seattle City Light specified approximately 300 LCC Series Gothic style energy efficient, environmentally friendly and functional LED fixtures from Sun Valley Lighting in Palmdale California.

Kevin Gorman, Streetlight LED Conversion Program Manager for Seattle City Light, said, “We selected the LCC Series based on three major factors. First, the fixtures maintained the gothic style to fit within neighborhood aesthetics. Second, we found that the LCC Series provided superior LED efficiency and light control during the pilot program. And finally, the fixtures are made by a reliable and trusted manufacturer to ensure the quality of the streetlights.”

The LCC Series fixtures have micro-reflectors mounted around each LED to control the raw light output. The engineered LED optical components are uniquely aimed horizontally and vertically and combined to produce



Pacifica

A Cohesive Modern Collection

The new Pacifica™ family of luminaires can illuminate an entire site, simplifying your lighting choices and putting your mind at ease.

Complementing today's architectural compositions while providing superior photometric performance, the Pacifica™ collection of products is bound to make waves within the lighting industry.



highly efficient light distributions. Clear-patterned diffusing lenses were also used to minimize glare.

“We found that utilizing a Type II distribution pattern with Sun Valley Lighting’s proprietary LED Power Array™ 2 and glass refractor produced an even light distribution over the desired illumination zone of the neighborhood streets and sidewalks. We also utilized a house side shield to ensure there was minimal light trespass onto private property,” Gorman added.

The streetlights include 2700K CCT LED chips to deliver a warmer and more environmentally friendly lighting solution for the Windermere neighborhood and residents of Seattle. Also, the LCC Series fixtures incorporated a 7 pin NEMA photocell receptacle and 0-10v dimmable power supply to allow the new streetlights to be compliant with an upcoming wireless control system implementation.

The LCC Series uses constant current LED drivers that efficiently operate on input voltages from 120-277VAC, 50/60hz. The LED driver is mechanically fastened to a retaining

bracket. The driver has a minimum 4KV of internal surge protection with a 10KV and 20KV surge protector optional.

Built to Perform

The fixtures have high-Impact clear acrylic diffusing lenses with durable corrosion-resistant cast aluminum



housing. Their tops are hinged for access to the LED compartment and wiring is accomplished through toolless access to a terminal block compartment. All hardware is stainless steel.

Gorman added, “The utility crews really appreciated the ease of installation with the new access door which allows easy reach to the utility-grade terminal block and integrated surge suppressor.”

Built to last for many years, the LCC Series fixtures have a polyester powder coat finish that incorporates a four-step prewash process to pretreat the metal surface for maximum coating adhesion. The top coat is baked at 400°F for maximum hardness and exterior durability to ensure better color retention and a longer performance life.

Gorman additionally noted that Sun Valley Lighting and their local representative, Jeremy Michel from ERW Lighting + Controls, was in-step with stakeholder requests throughout the pilot program and responded thoroughly, often exceeding expectations with expedience and sometimes offering better ideas than what were originally presented.

“The overall result is a beautiful, energy-efficient, gothic style appearance with precise directional lighting that residents will appreciate during the night and day for many years to come,” said Gorman. □



Extend Luminaire Life While Reducing Energy Consumption

The Appleton™ Mercmaster™ Connect LED by Emerson is designed to illuminate hazardous and harsh industrial locations with integrated motion and illuminance sensors. Paired with Emerson’s Plantweb Insight Connected Lighting Application, operators have access to lighting usage data and sustainability analytics.

The Mercmaster Connect LED provides facility managers with continuous monitoring of their LED lighting with real-time insights gained into sustainability goals, diagnostics and lumen levels from any remote location at dramatically lower costs as compared to wired alternatives, with faster installation time and minimal disruption to plant operations.

Learn more at: masteringled.com



Appleton™ Mercmaster™ Connect LED

APPLETON™

The Emerson logo is a trademark and a service mark of Emerson Electric Co. © 2021 Emerson Electric Co.

EMERSON

CONSIDER IT SOLVED™

Industrial-Grade VIZZ Headlamps Maximize Safety, Reliability

The rugged series offers exceptional brightness and longevity with dimmability – and even an intrinsically safe option for potentially hazardous settings

FOR PROFESSIONAL TRADES LIKE utilities, facility maintenance, and construction, Princeton Tec's industrial-grade VIZZ series headlamps are designed to provide powerful, lasting, reliable, hands-free illumination to increase operator safety and productivity in the many low-light work conditions that require it. Whether the job starts before the sun rises or ends after it sets, or operators are working in small or large dark spaces, they need a light that is going to work as hard as they do in whatever conditions that are thrown their way.

Princeton Tec designs and manufactures its headlamps in the U.S. with durable thermoplastic material engineered to withstand drops and rough handling. An IPX7 waterproof rating means the headlamps are thoroughly protected from moisture, providing waterproof integrity down to 1 meter for up to 30 minutes. The U.S. military, and numerous utilities, use these products, which offer a lifetime warranty.

Lightweight 3.2oz VIZZ series headlamps flexibly light up the workspace with two separate modes that the operator can easily switch between at the push of a button: flood which widely illuminates the surroundings, and spot which focuses a

Princeton Tec's industrial-grade VIZZ series headlamps provide powerful, lasting, reliable, hands-free illumination.

bright beam on the task at hand.

The operator can dim and adjust the light level to their personal preference in both modes by holding down the pushbutton to the desired setting. The

dimming capability also extends battery life. The raised button provides ease of use when the operator is wearing gloves.

Since battery life is an important consideration for technicians working 8-to-12-hour shifts, VIZZ series headlamps offers consistent regulated LED illumination. Traditional lights are very bright initially, but immediately begin to dim and continue to dim until the batteries are drained.

These headlamps come with an industrial headlamp kit with a nylon head strap, a rubber hard hat strap, and double-sided Velcro to affix the light to a helmet, if preferred. Three AAA batteries are included.

The VIZZ series is offered in two distinctive headlamp models, the VIZZ II and VIZZ IND. Both appear in POP packaging for facility managers that want to display the products in their vending machines as all specifications are clearly listed.

The VIZZ II

For trades that work in potentially hazardous environments, the intrinsically safe VIZZ II headlamp meets essentially all safety requirements whether for OSHA, Zone 0, or state standards



- + Rise Higher
- + Go Farther
- + Shine Brighter
- + Work Smarter

The New 100W OmniMax



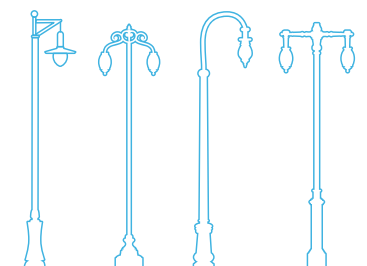
Dependably beautiful. And dimmable.

The new 100W joins our 40W and 70W catalog. With 0-10V dimming, most models meet DLC 5.1 requirements and are eligible for rebates. Ask too how ConnectLED can help you set the scene.

You asked, and we delivered. The 100W OmniMax LED retrofit was designed specifically for applications where you need more light from your decorative fixtures, such as taller pendant and teardrop applications (>25'), and locations where decorative luminaires are the primary light source.

A new patented Evluma driver delivers higher lumen output, even at lower CCT levels. Pair that with OmniMax's revolutionary low-glare optics, and you get the kind of light your decorative fixtures were built for: warm, beautiful and bright.

evluma



(Classes I, II, III; Divisions 1,2; and Groups A-G). So, there is nothing from the light that could spark a potential fire or explosion in a work environment that could have flammable gases, vapors, materials, or dusts present.

One Maxbright LED creates a powerful 200 lumen spot beam for long-throw illumination, while 4 Ultrabright LEDs deliver a dimmable flood beam. At close range, the wide beams simulate normal daylight conditions, allowing technicians to use their peripheral vision, while focused narrow beams provide distance illumination. The smooth, white, wide-beam light emitted by Ultrabright LEDs is ideal for close to mid-range tasks. Ultrabright LEDs are usually grouped together to offer a more



Princeton Tec's VIZZ series headlamps increase operator safety and productivity in the many low-light work conditions that require it.

powerful light source. The headlamp offers a burn time of 102 hours.

VIZZ IND

The VIZZ IND headlamp is like the VIZZ II but provides even brighter

illumination with a 550-lumen spot beam. However, it is not safety-rated for hazardous environments. The headlamp offers a burn time of 100 hours. Although professional industrial-grade headlamps cost a little more up front, the overall cost of ownership is often lower because the batteries typically last 5-6 times longer and do not need to be replaced constantly during work shifts. Since the rugged headlamps are designed to last for many years in harsh conditions, frequent replacement also is not necessary the way it is with more fragile consumer-grade units.

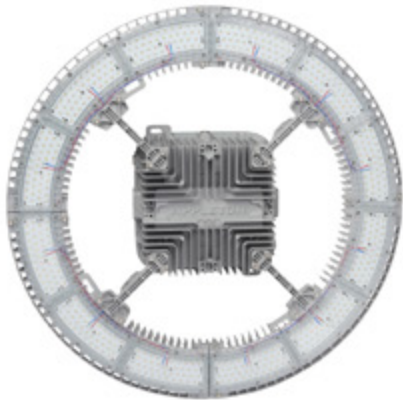
For more info, call 1-800-257-9080; email questions@princetonotec.com; visit princetonotec.com; or write to Princeton Tec, PO Box 8057, Trenton, NJ 08650. □



Lighting Your Way at Greater Heights

The Appleton™ IHC LED Luminaire by Emerson is the ideal solution to deliver light from mounting heights of 50 to over 100 feet. With outputs up to 90,000 lumens, an IP66 marine and wet location rating, and an ambient temperature range of -40 °C (-40 °F) to 75 °C (167 °F), the IHC was designed to meet the demands of your harsh industrial environment and lighting requirements.

Learn more at: masteringled.com



Appleton™ IHC LED Luminaire

APPLETON™

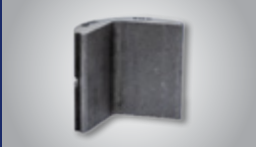
The Emerson logo is a trademark and a service mark of Emerson Electric Co. © 2021 Emerson Electric Co.



CONSIDER IT SOLVED™

ILSCO
connections
matter

3 DIES
REPLACE 30!



The three die halves can replace the 30 standard u-dies essentially making the standard 12 ton crimper a dieless crimp tool.



NEW! DINO DIES

- ▶ **Save time, space and money**
 - Save time swapping between die sets on the job
 - No need to purchase separate adapters or an additional tool to crimp complete range of sizes
- ▶ **SureCrimp® Guaranteed warranty**
10 year warranty when crimping with complete IlSCO system*

*Connections made with: TaskMaster tool, ILSCO die, and SureCrimp lug



Crimp from #8 to 1000 kcmil
WITH JUST A SINGLE SET OF 3 DIES!



customer.service@ecmindustries.com • www.ilsco.com • Customer Care +1 (800) 776-9775

To Help Boost Jobsite Productivity, DEWALT® Introduces Suite of Construction Technology Solutions

DEWALT, a Stanley Black & Decker (NYSE: SWK) brand and leader in total jobsite solutions, recently announced the launch of its innovative suite of construction technology solutions to help construction professionals streamline their operations, enhance productivity, automate workflows, and support worksite safety. DEWALT’s construction technology solutions consist of a variety of connected tools, software, and mobile applications that incorporate Artificial Intelligence (AI) and the Internet of Things (IoT).

“Keeping up with the rapidly evolving technology landscape is one of the most critical issues construction professionals face today, in addition to squeezed profit margins, budget and project overruns, labor shortages, high inflation, and supply chain issues,” said Brad Roberts, President, Construction Technology, Stanley Black & Decker. “DEWALT is now a partner that can help lead customers towards the future of construction by tackling

these challenges through a connected environment. DEWALT delivers stronger interoperability among tools, consumables, advanced hardware, and software, for successful collaboration across construction workflows.”

The suite of DEWALT construction technology solutions includes features that provide real-time data and insights, automate routine tasks, and facilitate smooth collaboration through each phase of construction, from design to fabrication shops, and on the jobsite. The DEWALT product lineup includes:

- **MSUITE® Management Software:** MSUITE is a cloud-based suite of management software to connect BIM, Fab, and field construction teams for offsite and modular construction. MSUITE helps contractors track, manage, and share data throughout the entire life cycle of a construction project with easy-to-use, scalable, and industry-focused software that provides real-time status updates and valuable progress tracking and estimating information

right on the fabrication shop floor.

- **TOOL CONNECT™ Site Manager:** Site Manager is a cloud-based platform allowing contractors to manage their tools and equipment from DEWALT and other brands from anywhere using a smartphone or tablet. Tool Connect enables users to locate tools, check their inventory levels, and monitor their usage and performance, helping to reduce downtime and prevent loss.
- **Concrete Sensors powered by Converge:** DEWALT’s wireless concrete sensors allow construction professionals to speed up their work utilizing real-time concrete curing data through a remote mobile app or web-based interface. DEWALT has partnered with Converge, a top concrete material and operations optimization company, to help the construction industry be productive by utilizing Converge’s revolutionary AI-based platform, ConcreteDNA, which is powered by data from DEWALT’s wireless concrete sensor. DEWALT Concrete Sensors boast advanced features such as curing milestone alerts, materials performance analytics, accurate AI predictions, and BIM integration. This allows concrete professionals to quickly begin work as users can directly measure hardening, which helps reduce the risk of construction defects and costly repairs in the future. In addition, the exact amount of cement in the concrete mixture can be tailored based off insights sent from the sensor to ConcreteDNA, which can help reduce unnecessary carbon emissions by using only as much cement as needed in subsequent jobs.

To learn more about DEWALT construction technology solutions, please visit: www.dewalt.com/Construction-Technology. □

NASCAR Cup Series Race Weekend: DEWALT Construction Technology Solutions Paint Scheme



In celebration of DEWALT’s release of construction technology solutions, Christopher Bell, driver of the No. 20 Toyota Camry TRD for Joe Gibbs Racing, will sport a DEWALT Construction Technology paint scheme during the June 4th NASCAR Cup Series race weekend at World Wide Technology Raceway.

ABOUT DEWALT

DEWALT, a Stanley Black & Decker brand, is obsessed with how users work in the real world and is relentlessly pursuing total jobsite and landscaping solutions. By incorporating its latest technology and industry innovations, DEWALT is leading the charge for the jobsite of the future and pioneering the next generation of outdoor equipment. DEWALT products. GUARANTEED TOUGH®. For more information, visit www.dewalt.com or follow DEWALT on Facebook, Twitter, Instagram, and LinkedIn.



Versatile Mounting for Extreme Environments

The SolaHD™ SCP-X Series Standalone IP67 Power Supplies by Emerson can be mounted almost anywhere on a machine, conveyor, or wall. With no enclosure required they offer safety against arc flash hazards.

Quick-connect cables ensure the IP67 rating and eliminate costly wiring. Available from 100 Watts to 240 Watts, the SCP-X Power Supplies meet the diverse needs of automotive manufacturing, conveyor systems, and equipment where 24 Vdc power is required for geographically dispersed devices.

Learn More at: www.solahd.com



SolaHD™ SCP-X Series Standalone IP67 Power Supplies

SOLAHD™

The Emerson logo is a trademark and a service mark of Emerson Electric Co. © 2021 Emerson Electric Co.



EMERSON

CONSIDER IT SOLVED™

Optique Lighting Announces New Sales Representation Across Seven States

OPTIQUE LIGHTING, a leading designer and manufacturer of premium quality Nano Linear LED lighting luminaires, is pleased to announce that it has partnered with seven new sales agencies to represent and sell its Nano Linear LED architectural product lines.

Effective immediately, the appointed seven representative agencies include:

- Forman and Associates, Inc., Van Nuys, California, will represent the company in Southern California.
- Pro-Tech Lighting, Inc., Troy, Michigan, will represent the company in Michigan and Northwest Ohio.
- Meglio and Associates, Chesterfield, Missouri, will represent the company across Kansas and Missouri.
- Independence Lighting, Exton, Pennsylvania, will represent the company across Delaware,

Southeastern Pennsylvania and Southern New Jersey.

- Gormley-Farrington, Monroeville, Pennsylvania, will represent the company in West Pennsylvania and West Virginia.
- SK & Associates, Canton, Massachusetts, will represent the company across Maine, Vermont, New Hampshire, Massachusetts, Rhode Island and Connecticut.
- Western Florida Lighting (WFLi), New Port Richey, Florida, will represent the company in Western and Southwestern Florida.

“These sales reps have stellar reputations within the industry and their communities for managing successful lighting projects, large and small, with outstanding results,” said Rick Schuett,

vice president, sales, Optique Lighting. “We’re pleased to be represented across the country by these innovative and knowledgeable agencies.”

Optique Lighting architectural products are specifically curated to rapidly enable the design community to realize their vision in the most efficient way possible with easy ordering, fast quoting and short lead times for unique and patented solutions. The talented in-house team builds custom architectural Nano Linear solutions to a designer’s exact specifications from custom lengths to custom RAL colors — all delivered with a brilliant customer experience with unmatched service and product support.

For additional information about Optique Lighting products, visit www.optique-lighting.com. □

ABOUT OPTIQUE LIGHTING

Optique Lighting designs, engineers and manufacturers architectural LED linear lighting. Defining a new linear lighting category, Nano Linear, Optique Lighting is reinventing the linear space, making it easier for the design community to specify superior linear lighting solutions with easy ordering, fast quoting and short lead times. An engineering-driven company, our in-house team builds our patented custom architectural linear solutions to a designer’s exact specifications. For more information, visit www.optique-lighting.com.

OPTIQUE



Compact and Easy to Install DC UPS for Harsh Industrial Locations



SolaHD™ SDU DC - B Series DIN Rail UPS

The SolaHD™ SDU DC - B Series DIN Rail UPS by Emerson are perfect for mitigating power quality issues, minimizing loss of data and downtime.

The SDU DC - B UPS combines an industry leading compact design, wide operation temperature range -15 °C to +50 °C (+5 °F to +122 °F), enhanced communication and unique installation options to solve common application problems.

Learn more at: www.solahd.com

SOLAHD™

The Emerson logo is a trademark and a service mark of Emerson Electric Co. © 2021 Emerson Electric Co.

EMERSON

CONSIDER IT SOLVED™



Power Quality Analyzers & Loggers

CONNECT DIRECTLY TO AND SAFELY MONITOR UP TO 15KV

MODEL 15KVPSET VOLTAGE PROBES

THE MODEL 15KVPSET VOLTAGE PROBES ALLOW CONNECTING POWERSIGHT POWER ANALYZERS DIRECTLY TO 3-PHASE VOLTAGES UP TO 15 KILOVOLTS. NORMALLY, PROFESSIONALS WHO WISH TO MEASURE 12,470 VOLT LINES NEED TO LOCATE OR INSTALL A PT (POTENTIAL TRANSFORMER) IN ORDER TO MONITOR MEDIUM VOLTAGES. THE 15KVPSET ALLOWS DIRECT CONNECTION OF MEDIUM VOLTAGES TO POWERSIGHT ANALYZERS. SHOWN WITH OPTIONAL HOT STICKS, THE 15KVP HAS SHEPHERD HOOKS FOR HANGING ON BARE CABLE, TAPING



15 KVP Voltage Probe (Single) 15KVPSet (3 Probes, 9 Hot Sticks, Case)

SCAN ME



The World's Only Medium Voltage Direct Connection Solution for Portable Power Analysis.

OR BOLTING TO BUS BAR, OR ANY OTHER CONNECTION THAT IS NEEDED. THE 15KVPSET COMES DISASSEMBLED IN ITS OWN COMPACT CANVAS CARRYING CASE.

BUY • RENT • TRADE IN

MONITOR ANY POWER SOURCE OR LOAD



VERIFYING BACKUP POWER
LOAD STUDIES
COST & ENERGY ANALYSIS
100V – 4160V MOTORS
POWER QUALITY
COMMISSIONING
HARMONIC DISTORTION
PREDICTIVE MAINTENANCE
DC POWER TESTING
400HZ MONITORING
AND MUCH MORE

COMPACT - CAPABLE - VERSATILE
POWER ANALYZERS

IT'S ALL WE DO.



Made in USA
with US & Imported Parts

Products in Stock!



Most Orders Ship
in 1-2 Days!

SCAN ME



The World's Only Medium Voltage Direct Connection Solution for Portable Power Analysis.

PowerSight.com • sales@powersight.com • 1-925-444-7027



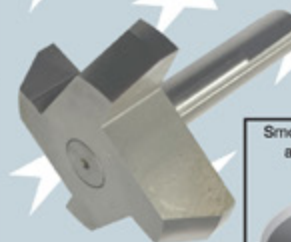
SP PRODUCTS, INC.
Productivity and value thru ideas
FOR SAFER BETTER FASTER JOBS



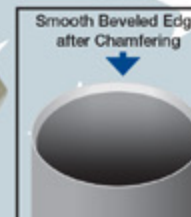
We're Proud to be the Electricians' Friend for Over 50 Years!

IP15a

Chamfer Bit
for PVC SCH 40/80



PATENT PENDING



IP27b

Electro Post EP-10
Box Support Bracket



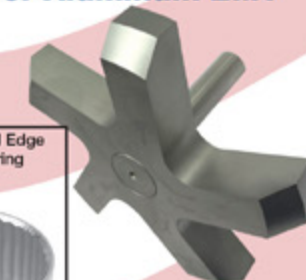
Mounts on all standard stud widths
of 2-1/2", 3-5/8" or 6"



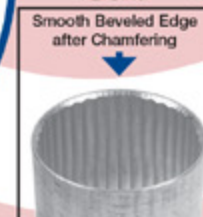
PATENT PENDING

IP15b

Chamfer Bit
for Aluminum EMT

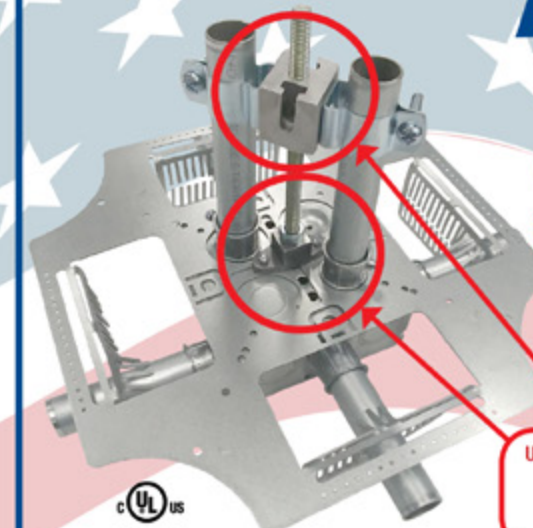


PATENT PENDING



NEW PRODUCTS

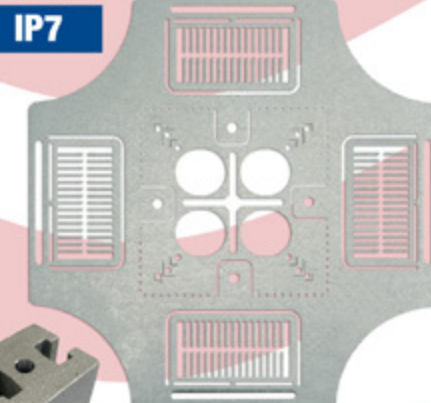
4-WAY
CONDUIT & BOX
SUPPORT PLATE
with Split Fingers
for Horizontal or
Vertical Installation



UL US
PATENTED

Use 4-Conduit Block
(IP19 or IP20)
with QwikBlock
(IP21a)

IP7



IP19/20
4-Conduit Block
PATENTED

IP21a

QwikBlock

PATENT PENDING

PVC Running
Thread SCH 40/80
Up to 30" Long

PATENT PENDING

IP3d



NEW Transition Fittings
Saves a Great Deal of Time Repairing Conduit
The Inside Diameter Remains the Same
Allows for Trouble Free Wire and Cable Pulls

UL US

IP13k
Inside PVC to
Inside PVC
PATENT PENDING



IP13p

3/4" MC Cable
to PVC



PATENT PENDING

IP13q

PVC
Reducer
PATENT PENDING



Male Threaded
PVC Offset

IP3c

1/2" thru 3" Offset
for Conduit Sizes
1/2" thru 6"

PATENT PENDING



Plus More Being Invented for SAFER BETTER FASTER Jobs . . . Call With Your Ideas!

SPProducts.com 800-233-8595 info@SPProducts.com

Milwaukee® NITRUS CARBIDE™ Multi-Tool Blades
Deliver the Fastest Cutting, and Longest Life

Milwaukee Tool continues to raise the bar in life and speed with new NITRUS CARBIDE™ Oscillating Multi-Tool Blades that provide over 2X faster cuts and 2X longer life than traditional carbide teeth products. Available in Extreme Metal and Extreme Material options, the new blades will join the NITRUS CARBIDE™ family of products - the best-performing cutting products on the market.

"With the strides in performance and capability that both oscillating multi-tools and accessories have taken over the last few years, professionals are reaching for these versatile tools more often and for more applications than ever before," says JJ Beck, Product Manager for Milwaukee Tool. "In order to keep up with these growing demands, professionals need a blade that can stand up to the wide range of heavy-duty materials they face in a day."

The NITRUS CARBIDE™ Extreme Metal blade will cut more bolts, screws and nails than ever before. The NITRUS CARBIDE™ Extreme Material blade delivers the fastest, most versatile cuts in more materials like screw-embedded wood, cement board, plaster, drywall and more. Both NITRUS CARBIDE™ multi-tool blades have an optimized blade length, tooth design, and unique carbide blend for greater cutting capabilities.

Complete with a newly designed Universal Fit OPEN-LOK™ anchor, the new blades are strengthened and reinforced to provide reduced vibration and better control while cutting. The new anchor maximizes tool-to-blade power transfer through secure connection and improved design. In addition, the open-back design maintains the ability to fit on over 100+ multi-tools, and allows for quick blade changes.

Offering the fastest cutting and longest life, the entire family of NITRUS CARBIDE™ products, including the original NITRUS CARBIDE™ SAWZALL BLADES and the new NITRUS CARBIDE™ Multi-tool blades are the best performing cutting products on the market.



For more information, visit
www.milwaukeetool.com

HOW ILLUMINATING!

5 BIG BENEFITS OF TCP LIGHTING

1 **MORE CHOICES**
Hundreds of light styles.

2 **SUPPLY CHAIN EFFICIENCY**
Design, manufacturing and distribution.

3 **REPLACEMENT & RETROFIT SOLUTIONS**
Replace obsolete lighting.

4 **STAY UP TO CODE**
Strategy for fluorescent bans.

5 **BE SAFE**
Battery back-up for outages.



Innovation is LED by TCP



888.399.4217 | TCPi.com

RANDL
INDUSTRIES, INC.

Install Peace of Mind!

First there was 4 square...
and now the **REVOLUTIONARY 5 Square® Box!!**

You've struggled with 4 Square boxes for years - you know how small, cramped and time consuming they are. Finally, there is a solution that allows you the space you have always needed.

The **5 Square®** Boxes (5" x 5" x 2-7/8") provide up to 88 in³ of interior volume which more than doubles that of most existing boxes on the market.

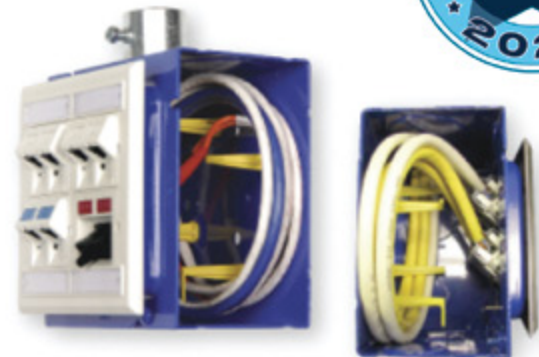
Create a robust and unrivaled infrastructure for the life of your facility with the **5 Square®** Products!

Fire Signal



- TWICE THE VOLUME AS MOST BOXES
- SAVE LABOR...INCREASE PROFITS
- ELIMINATES TROUBLESHOOTING TIME AND COST
- FULLY UPGRADEABLE SYSTEM
- SPECIFIED BY ENGINEERING FIRMS, HOSPITALS, UNIVERSITIES & GOVERNMENT AGENCIES
- AVAILABLE IN ZINC OR RED

Telecommunications



- INTEGRAL CABLE MANAGEMENT
- SAVE LABOR...INCREASE PROFITS
- FACILITATES MIN. BEND RADIUS REQUIREMENTS
- SUPPORTS CURRENT AND EVOLVING SYSTEMS
- SUPPORTS PoE PLUS
- SPECIFIED BY ENGINEERING FIRMS, HOSPITALS, UNIVERSITIES & GOVERNMENT AGENCIES



RANDL
INDUSTRIES, INC.

P: 509.340.0050 • F: 509.340.0051

See our line of telecom & fire signal boxes at: www.RANDL-INC.com

Making Communications & Fire Protection More Reliable & Cost-Effective!



SP PRODUCTS, INC.
Productivity and value thru ideas
FOR SAFER BETTER FASTER JOBS

2022 NECA
ShowStopper
WINNER

Transition Couplings PVC Bell End Adapter Galvanized Rigid Conduit



NEW



UL US
PATENT
PENDING



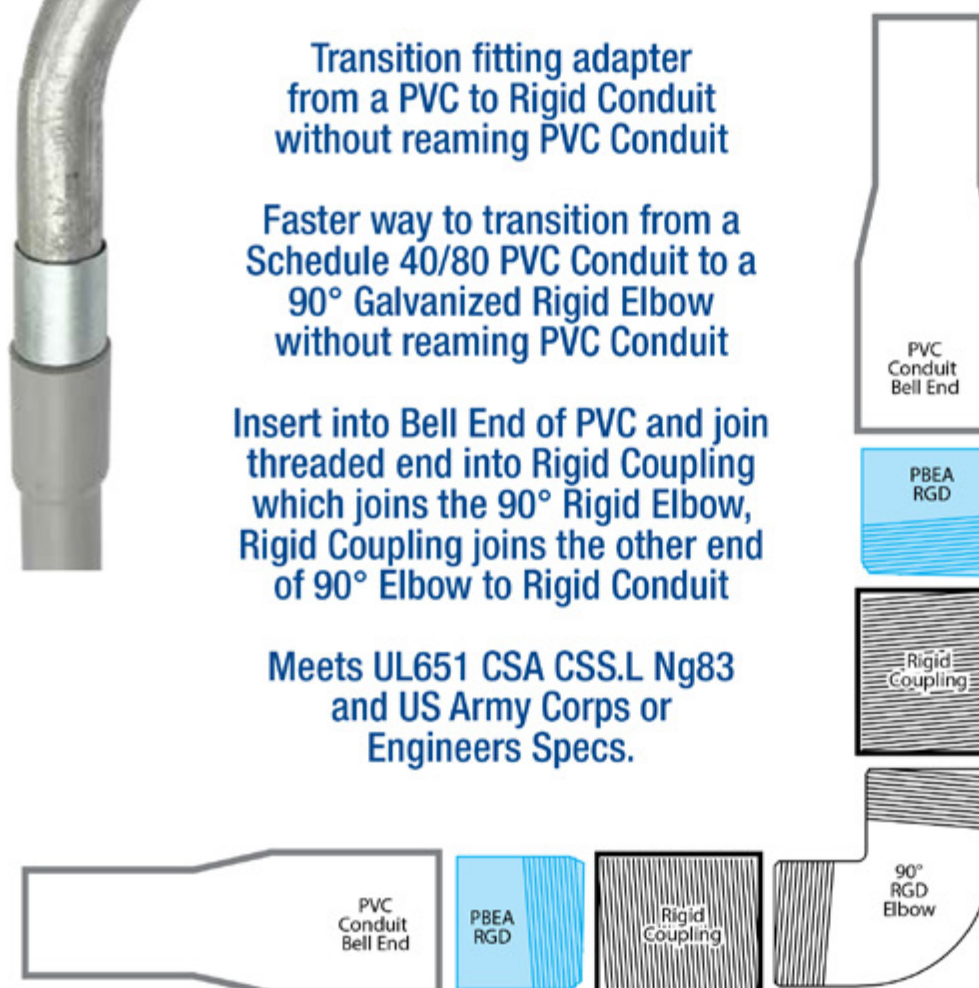
1/2" thru 6"

Transition fitting adapter
from a PVC to Rigid Conduit
without reaming PVC Conduit

Faster way to transition from a
Schedule 40/80 PVC Conduit to a
90° Galvanized Rigid Elbow
without reaming PVC Conduit

Insert into Bell End of PVC and join
threaded end into Rigid Coupling
which joins the 90° Rigid Elbow,
Rigid Coupling joins the other end
of 90° Elbow to Rigid Conduit

Meets UL651 CSA CSS.L Ng83
and US Army Corps or
Engineers Specs.



Transition Couplings

Size	Catalog #
1/2"	PBEA/RGD 50
3/4"	PBEA/RGD 75
1"	PBEA/RGD 100
1-1/4"	PBEA/RGD 125
1 1/2"	PBEA/RGD 150
2"	PBEA/RGD 200
2-1/2"	PBEA/RGD 250
3"	PBEA/RGD 300
3-1/2"	PBEA/RGD 350
4"	PBEA/RGD 400
5"	PBEA/RGD 500
6"	PBEA/RGD 600

Customer must satisfy all codes and owners' specifications.

SP PRODUCTS, INC.
Productivity and value thru ideas



**PATENT PENDING
PATENTED**



LABELS APPLY TO PRODUCTS ONLY WHERE SHOWN ABOVE

730 Pratt Boulevard • Elk Grove Village, IL 60007
P: (847) 593-8595 • F: (847) 593-8629 • Toll-free (800) 233-8595
E: info@spproducts.com • www.spproducts.com

IP13r

new
PRODUCTS

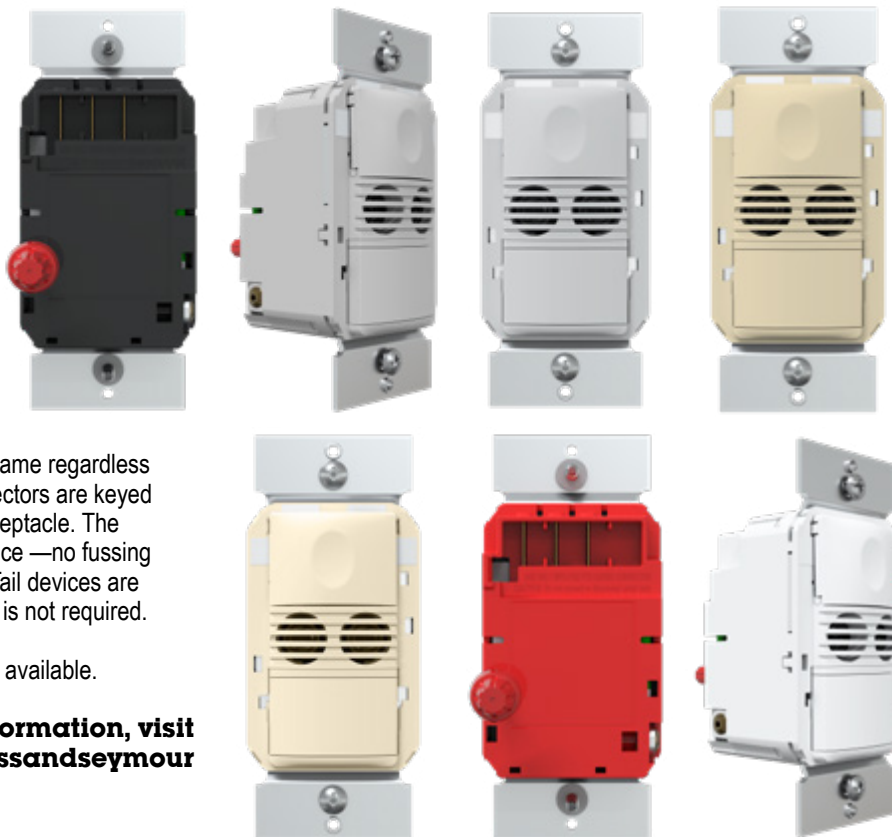
**Twist. Click. Screw. Done.
PlugTail® Wiring Devices**

Future-proof your projects with PlugTail® Wiring Devices. They install 5x faster than conventional wiring devices and are easy to swap out, change and upgrade. Perfect for any commercial wiring installation, make the switch for an efficient and cost-effective way to address a building's electrical requirements today and tomorrow.

Factory-terminated devices and connectors mean that device installation is the same regardless of skill level of the installer. The UL-Listed connectors are keyed to ensure proper wiring installation into each receptacle. The connector simply snaps into the back of the device —no fussing with wires, stripping, or tightening screws. PlugTail devices are finger safe with no exposed terminals, so taping is not required. Now device installation is a snap!

The toughest and safest decorator receptacle available.

**For more information, visit
www.legrand.us/passandseymour**



**Luminus Releases LUX COB Series with 90
and 95 CRI Minimum**

*Leading in Quality of Light for a Variety of
Applications*

Luminus Devices is excited to announce the immediate availability of the LUX COB series. These innovative new COBs are available in both 90 and 95 CRI minimum and LES sizes from 4 to 22mm in a variety of flux densities and a full range of CCTs. The 90 CRI minimum delivers high-quality of light with the lumen/watt efficacy of an 80 CRI source, thus enabling luminaire makers to reduce SKUs by eliminating the need for 80 CRI products. Both the 90 and 95 CRI minimum versions use narrow-band red phosphor (Current KSF) technology to deliver outstanding performance

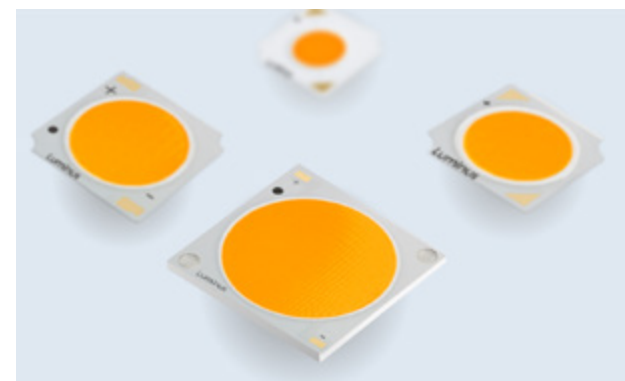
and quality of light for a variety of lighting applications including retail, residential, hospitality, architectural, museum, downlights, track lights, and spotlights.

Dave Davito, COB Product Line Director at Luminus adds, "The LUX COB series is an exciting addition to the Luminus COB portfolio as they are available in not only 90 CRI minimum, but we went a step further to offer an optional 97 CRI typical, 95 CRI min, with efficacy similar to what our competitors' 80 CRI COBs have been delivering in recent years. For example, the LUX 95 CRI min CLM-22 provides 157 lumens/W and the 90 CRI version reaches an amazing 176 lumens/W. Luminaire makers who received prototype samples have already been loading orders on us faster than any new product in our 10-year COB history."

Luminus has developed a reputation in the LED market as the leader in quality of light, and lighting designers are specifying Luminus in projects where their end users are most discerning and demanding, such as retail lighting, museums, hospitality, and high-end residential. The launch of the LUX COB series further solidifies Luminus' leadership position and does so without having to sacrifice efficacy. European customers in particular are planning to leverage the LUX COBs to help their end customers qualify for energy efficiency rebates, which require the entire fixture system (including optics and drivers) to achieve 120 lumens/W. Since energy costs have risen sharply worldwide, and everyone is demanding a higher quality of light in parallel, the timing of the Luminus LUX COB product release is fortuitous indeed.

The LUX COB Series is now available through Luminus' authorized distributors. For a full list of features & applications visit www.luminus.com/products/cobarrays/lux-cob.

**For more information, visit
www.luminus.com**



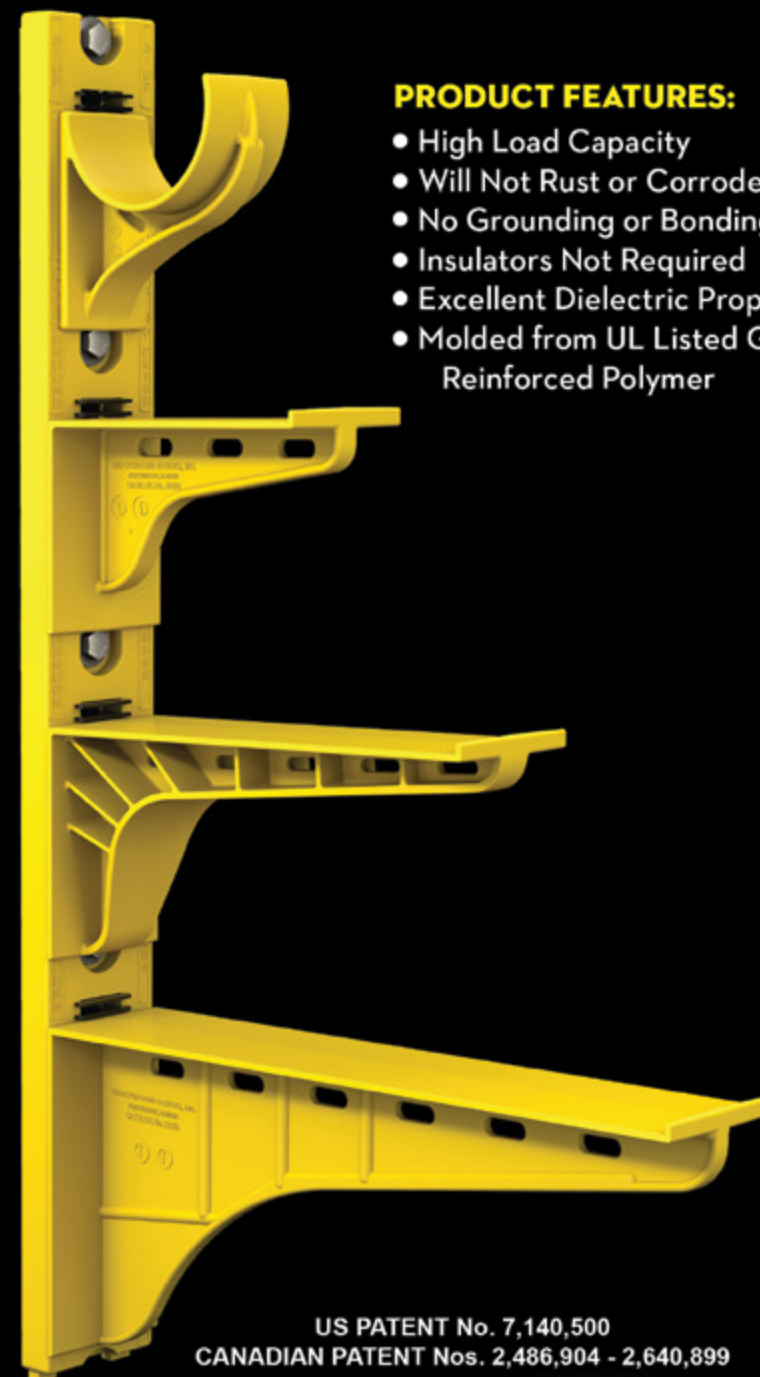
The Heavy Duty Nonmetallic CABLE RACK

For Power and Communications Manholes And Vaults



PRODUCT FEATURES:

- High Load Capacity
- Will Not Rust or Corrode
- No Grounding or Bonding
- Insulators Not Required
- Excellent Dielectric Properties
- Molded from UL Listed Glass Reinforced Polymer



US PATENT No. 7,140,500
CANADIAN PATENT Nos. 2,486,904 - 2,640,899



HDL Arm Lock shown with
RA04 Arm and CR36-B Stanchion



3HDS - 3" throat saddle shown with
a cable secured by cable ties.



RA08 - 8" arm shown with three
cables secured by cable ties.

UNDERGROUND DEVICES
INCORPORATED



420 ACADEMY DRIVE
NORTHBROOK, IL 60062
Phone: 847-205-9000 • Fax: 847-205-9004
Website: www.udevices.com

Klein Tools® Launches Backpack Cooler and Ice Packs to Keep Items Cold for Up to 24 Hours

Klein Tools, for professionals since 1857, introduces the Backpack Cooler & Ice Packs, perfect for keeping drinks cold for up to 24 hours and designed to make carrying a cooler comfortable and easy.

Backpack Cooler, Insulated, 30 Can Capacity (Cat. No. 62810BPCLR)

- Insulated backpack cooler holds up to 30 twelve-ounce cans and up to 7 lbs. of ice
- High-density insulation with rugged liner and leak resistant zipper keep items cold for up to 24 hours
- Lined front pocket and side mesh pockets can carry everything from tools to utensils
- Extra padding on the back and load adjustment straps add comfort and help balance a filled backpack
- Bottle opener and a headlamp bracket for added convenience
- Back padding extends over molded bottom for wearer comfort
- Made of heavy-duty, water-resistant materials that are easy to clean inside and out



Reusable Cooler Ice Packs, 2-Pack (Cat. No. 62811)

- Reusable ice packs are perfect for coolers, lunchboxes and more
- Designed to be durable and freeze quickly to be used over and over
- Ice packs stack neatly when freezing or storing
- Ice packs are non-toxic and BPA-free
- When frozen for at least 6 hours, the ice packs will stay cold for hours

“As temperatures rise throughout summer and people are outside more for both professional and personal obligations, they want to have a convenient way to transport food and drinks and keep them cold,” says Scott Rabe, senior product manager at Klein Tools. “Our new Backpack Cooler features high-density insulation with a rugged liner and a leak resistant zipper to keep items cold for up to 24 hours. The padding on the back and sides helps to keep the backpack comfortable and balanced as you’re carrying it. Plus, the Ice Packs (sold separately) freeze

quickly and can be used over and over again. Both are perfect for people who want to keep their items cold on the jobsite, camping, hunting or on the beach.”

Klein Tools® Introduces 2-in-1 Insulated Screwdriver for Protection and Quick Changes on the Job

Klein Tools, for professionals since 1857, introduces the 2-in-1 Insulated Flip Blade Screwdriver, featuring an insulated handle and insulated blade for quick changes on the job.

2-in-1 Insulated Electronics Screwdriver, Phillips, Slotted Bits (Cat. No. 32581INS)

- Features 2 tips in one tool, #0 Phillips and 1/8" Slotted tips
- Meets or exceeds ASTM F1505-16 (2021) and IEC 60900:2018
- Cushion-Grip™ handle for greater torque and comfort
- Heat treated precision machined tips for greater strength
- Securely and easily release the blade by sliding collar forward
- Spin cap maximizes precision control when fastening



“Insulated tools are a great way for professionals to help protect themselves from electric shocks on the job,” says Adriana Facchina, associate product manager at Klein Tools. “Our new 2-in-1 Insulated Electronics Screwdriver has both an insulated handle and insulated blade, and features a sliding collar, auto-eject mechanism that allows you to flip the blade simply and easily. With a Cushion-Grip™ handle for comfort and spin cap for precision, this is the perfect screwdriver to have as a go-to in your tool bag.”

For more information, visit
www.kleintools.com/new-products

STRENGTHEN YOUR BUSINESS



NECA
PHILADELPHIA
SEPT 29-OCT 2, 2023

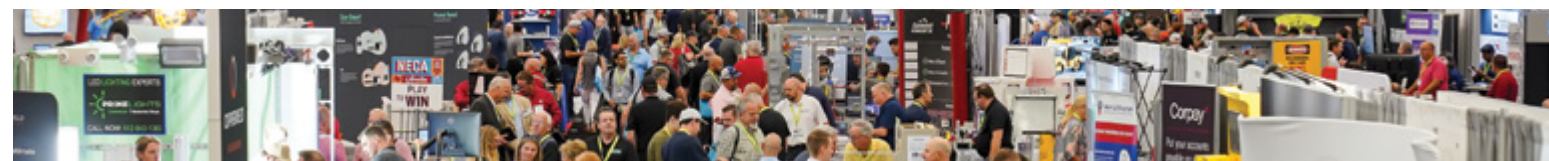


NECA 2023 PHILADELPHIA SEPTEMBER 29–OCTOBER 2, 2023

There are many opportunities to strengthen your electrical contracting business. Whether you’re working on new construction, renovation, or retrofit projects, we have the education, products, and solutions you need to protect and improve your workforce and your bottom line now and for years to come.

THE NECA SHOW IS OPEN TO THE ENTIRE INDUSTRY.

Register today at necaconvention.org
Use code **23EPS for FREE Trade Show admission!**



For more information on attending **NECA 2023 Philadelphia**:
202.991.6318 meetings@necanet.org

Follow us on LinkedIn at: National Electrical Contractors Association or on Facebook and Twitter @necanet




This advertiser index is compiled as a courtesy to our readers. While every effort is made to provide a complete and accurate listing of companies and page numbers, the publisher is not responsible for errors. **Click the company name or page number to see their advertisement.**

Company	PG#	Company	PG#
2023 NECA SHOW	31	POWERSIGHT / SUMMIT TECHNOLOGY INC	22
APPLETON / EMERSON	13	RANDL INDUSTRIES	25
APPLETON / EMERSON	17	SOLAHD / EMERSON	19
CONDUIT REPAIR SYSTEMS	4	SOLAHD / EMERSON	21
EVLUMA	15	SP PRODUCTS INC	3
ILSCO	16	SP PRODUCTS INC	23
ITOOLco	IFC	SP PRODUCTS INC	26, 27
KRENZ & COMPANY	32	SP PRODUCTS INC	BC
MILLER SAFETY CONSULTANTS LTD	7	SUN VALLEY LIGHTING	11
MOBILE DESK	1	TCP	24
MOBILE DESK	IBC	UNDERGROUND DEVICES	29
PHOENIX CONTACT USA	5		

When it comes to transformer cooling fans, Krenz-Vent is the industry recognized gold standard. Our leadership position is earned through 80+ years of R&D plus our superior engineering and customer service. You can rest easy when you specify Krenz fans.

ENGINEERED TO COOL
There is no comparison.



KRENZ & COMPANY, INC.
KRENZVENT.COM • 262.255.2310 • KRENZ@KRENZVENT.COM

BONUS FEATURE

TO VISIT AN ADVERTISER'S WEBSITE, SIMPLY CLICK THE QR CODE OR COMPANY NAME IN THEIR AD.



Electrical
Products & Solutions

“When Disasters Strike, First Responders Rely On Us!”

Our complete control, communication and convenience Utility Truck Console is becoming the new standard for truck fleets of all sizes. Loaded with standard and optional features that maximize ergonomics, productivity, and fleet/telecom standards into a one exceptional Mobile Console Solution.



MOBILE DESK
MOBILE OFFICE SOLUTIONS
1-877-663-3375
www.mobiledesk.com

Copyright © 2022 Mobile Desk, LLC All Rights Reserved.

Top Products 2022 Electrical Products & Solutions



SP PRODUCTS, INC.

Productivity and value thru ideas
FOR SAFER BETTER FASTER JOBS



We're Proud to be the Electricians' Friend for Over 50 Years!

IP5

"The Original"

Enter Any KO on Both Sides of the Box



IP19/20

4-Conduit Block
PATENTED

IP21a

QwikBlock
PATENT PENDING

Use 4-Conduit Block
(IP19 or IP20)
with QwikBlock
(IP21a)

IP6d

2-Way

with Split Fingers
for Horizontal or
Vertical Installation

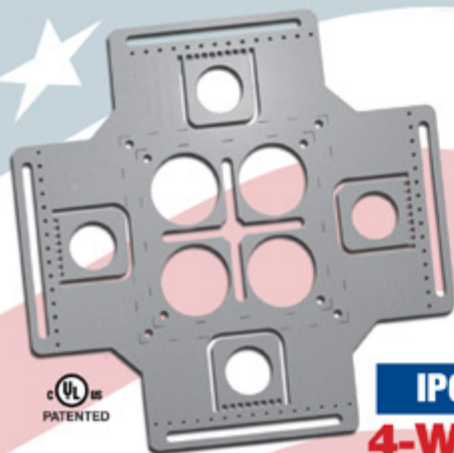


**Our Family of
Conduit & Box
Support Plates
Saves Valuable
Time & Money!**

IP6

4-Way

Enter Any KO on All 4 Sides
of the Box Plus 4 Large Open
KOs in Center Allows Entering
Back of Box



IP6a

2-Way/Half

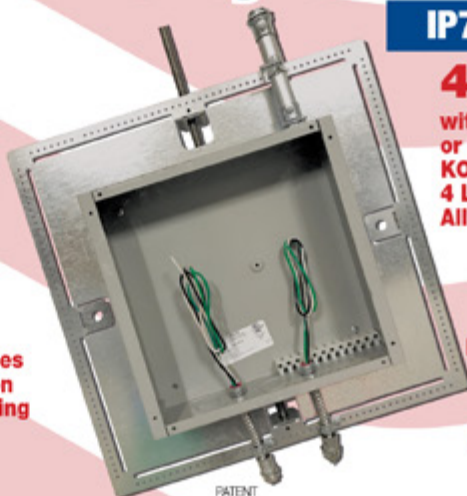
Enter Any KO on 1 or 2 Sides
of the Box Plus Large Open
KOs in Center Allows Entering
Back of Box



IP7

4-Way

with Split Fingers for Horizontal
or Vertical Installation. Enter Any
KO on All 4 Sides of the Box Plus
4 Large Open KOs in Center
Allows Entering Back of Box.



PATENT PENDING

IP8

Mount Horizontally or Vertically
from One Single Support

20 x 20

Supports up to 12 x 12 J-Box

28 x 28

Supports up to 20 x 20 J-Box

MADE IN THE USA!

Plus More Being Invented for **SAFER BETTER FASTER** Jobs . . . Call With Your Ideas!

SPPProducts.com **800-233-8595** info@SPPProducts.com