

# Electrical Products & Solutions™

JULY 2023

The Purchasing Guide for Electrical Contractors

[www.epsmag.net](http://www.epsmag.net)

## SP Products Inc.

**FOR SAFER BETTER FASTER JOBS**

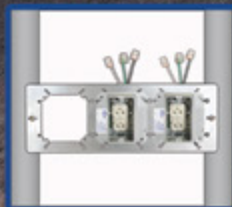
### QwikDuct HDPE Custom Templates



Below Grade



Slab on Grade



Wall Rough



Overhead Rough







**In-Line Cordless Cable Cutter**



Part # ILCCC1000

iTOOLco's in-line Cordless Cable Cutter features 1000 MCM Cu/Al jaws that deliver rapid, installation-ready cuts in seconds. This open jaw in-line cutter is equally balanced, allowing you to cut effortlessly even in the tightest spots. Featuring a LED light ring for precise visual placement of your cut, this compact tool cuts through 1000 MCM copper and aluminum at least 2 times faster than other cutters. Not rated for ACSR.

[www.iTOOLco.com](http://www.iTOOLco.com)

865-670-3713



# Aida

Uncompromised Quality.  
Incomparable Price.



THE **PREFERRED CHOICE** OF BUILDERS,  
CONTRACTORS & ELECTRICIANS

Visit Us at Booth #3205, NECA 2023  
[aidacorp.com](http://aidacorp.com)





COMPANY PROFILE

**6 Protect Yourself**  
Miller Safety Consultants —  
*A Leader in Arc Flash Protection*

COVER STORY

**8 SP Products**  
*Productivity and Values thru Ideas*

DEPARTMENTS

- 14** INDUSTRY NEWS
- 18** NEW PRODUCTS
- 32** AD INDEX

ON THE COVER

Photo courtesy of SP Products



# Electrical Products & Solutions™

The Purchasing Guide for Electrical Contractors [www.epsmag.net](http://www.epsmag.net)

**PUBLISHER**  
Danny J. Salchert

**OFFICE MANAGER**  
Anita Salchert

**CREATIVE DIRECTOR**  
Derek Gaylard

**CIRCULATION DIRECTOR**  
Pam Fulmer



**PRESIDENT**  
Danny J. Salchert

**EXECUTIVE AND  
ADVERTISING OFFICES**  
2009 Eagle Ridge Drive  
Birmingham, AL 35242  
**phone:** 205.981.4541  
[www.epsmag.net](http://www.epsmag.net)  
[danny@epsmag.net](mailto:danny@epsmag.net)

*Electrical Products & Solutions™* is published twelve times a year on a monthly basis by ABD Communications, Inc., 3591 Cahaba Beach Road, Birmingham, Alabama, 35242, USA. *Electrical Products & Solutions™* is distributed free to qualified subscribers. Non-qualified subscription rates are \$57.00 per year in the U.S. and Canada and \$84.00 per year for foreign subscribers (surface mail). U.S. Postage paid at Birmingham, Alabama and additional mailing offices. *Electrical Products & Solutions™* is distributed to qualified readers in the electrical contracting industry. Publisher is not liable for all content (including editorial and illustrations provided by advertisers) of advertisements published and does not accept responsibility for any claims made against the publisher. It is the advertiser's or agency's responsibility to obtain appropriate releases on any item or individuals pictured in an advertisement. Reproduction of this magazine in whole or in part is prohibited without prior written permission from the publisher.

**POSTMASTER:** Send address changes to  
ABD Communications, Inc., P.O. Box 382885  
Birmingham, Alabama 35238-2885

**FOLLOW US ON**





PRODUCTS, INC.  
*Productivity and value thru ideas*  
**FOR SAFER BETTER FASTER JOBS**



*We're Proud to be the Electricians' Friend for Over 50 Years!*

# Qwik Duct

## Safer Better Faster

**IP3b**  
Patent Pending

**HDPE CUSTOM TEMPLATES**  
*In Any Configuration Required*

**IP1**  
cUL US  
Patent Pending

**PVC Offset**  
Sizes 1/2" thru 6"  
Meets Flexible Mandrel Test Requirements

**Bore Spacers**  
Sizes 1/2" thru 6"  
Roll assembled conduit into caissons and under obstructions  
cUL US

**IP13A-F**

# Conduit Transition Couplings

**IP15**  
End Bell Adapter  
Schedule 40/80 PVC  
cUL US  
PATENT PENDING

**PVC/PVC**

**PVC/EMT**

**PVC/Rigid**

**PVC/Liquidtight**

**PVC/Stainless**

**PVC/Alum**

**PVC/Flex**

**IP14a**  
1 Piece Reaming Bit  
1/2" thru 6" Schedule 40/80  
PATENT PENDING

**Save Cost on the Rigid Nipple, Tape & Labor**  
**Use for Entire Job - Not Just for Repair**

*Plus More Being Invented for SAFER BETTER FASTER Jobs . . . Call With Your Ideas!*



**SPProducts.com 800-233-8595** [info@SPProducts.com](mailto:info@SPProducts.com)



# REPAIR CONDUIT IN A SNAP!

No Tape • No Plastic Straps • No Metallic Straps

## NO KIDDING!

*Designed especially for power, communications  
and fiber optics.*



**STEP 1**  
Remove damaged  
conduit



**STEP 2**  
Cut split duct  
conduit to fit



**STEP 3**  
Snap in  
place

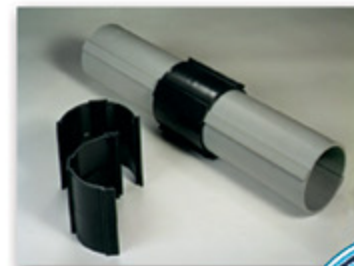
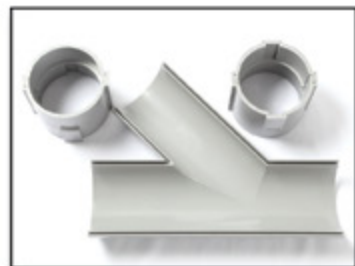
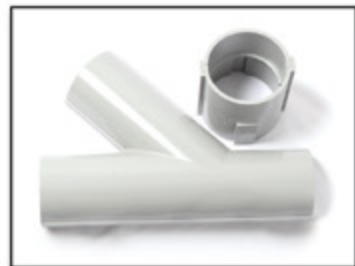


**STEP 4**  
Attach  
adapters



**STEP 5**  
Finish job in  
record time

***"The World Leader In Split Conduit Products"***

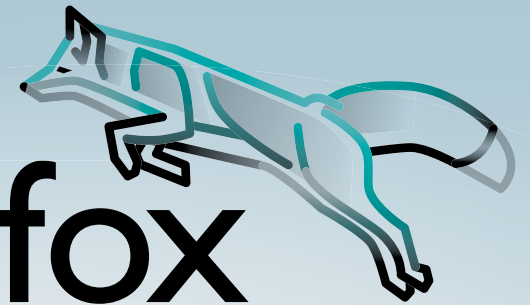


**Conduit Repair Systems, Inc.**  
The World Leader In Split Conduit Products



800.670.1804 • 435.673.8724 fax • [crs@conduitrepair.com](mailto:crs@conduitrepair.com) • [www.conduitrepair.com](http://www.conduitrepair.com)

THE  
**TOOL fox**



## TOOLS you can TRUST

Partner with the **TOOL fox** to take advantage of these benefits:

- Robust, durable, and ergonomic industrial wire-processing hand tools
- Cut, strip, and crimp with consistent high-caliber results
- UL Listed when used with Phoenix Contact's quality ferrules
- Backed by a dedicated sales team and technical service
- Covered by a limited lifetime warranty



For more information and videos, please visit  
[www.phoenixcontact.com/us-TOOLfox](http://www.phoenixcontact.com/us-TOOLfox).



© PHOENIX CONTACT 2023



# Protect Yourself

## Miller Safety Consultants — A Leader in Arc Flash Protection

**Vince Miller started Miller Safety Consultants**, a veteran owned business in 1999. The goal of the business was to provide cost effective safety consulting, employee training such as: confined space entry, fall protection, electrical safety and provide sales of electrical shock and flash protective equipment and fall protection equipment to businesses in the Washington DC area.

Reliance Industries provided fall protection products and much of the sales and training was on behalf of the supplier. In 2000, the owner decided to retire from his business, and Vince decided to discontinue the fall protection line of his business and concentrate more in the electrical training and products.

Vince had been a distributor for Certified Insulated Products (CIP), a manufacturer of electrical insulated tools and electrical arc flash clothing manufactured by Otex in Rochester, New York. As a distributor, Vince provided sales through his internet website and much through relationships with electrical contractors. His training was a classroom environment and was provided directly to customers but he also taught as a sub-contractor for other safety consulting companies and the

Chesapeake Safety Council in Baltimore, Maryland. In 2005, Vince partnered with Vivid Learning Systems in Cascades, Washington to provide on-line training in safe work practices.

Training in electrical safe work practices is still provided locally in the Washington DC area and as a partner with an electrical engineering firm and online. The training is based on the Occupational Health and Safety Administration (OSHA) standards and the National Fire Protection Association (NFPA) 70E standard.

Miller Safety Consultants is now a distributor for Cementex USA, Burlington, New Jersey, for insulated tools and equipment and clothing from OTEX Protective, Rochester, New York.

The majority of his sales of products

are from the web-based store. Cementex is nationally known for their quality equipment. Otex Protective is becoming more known for their quality clothing. For years, they have manufactured their products under other provider labels. Vince chose to not create his clothing line, but to sell the manufacturer product.

Vince has worked with many electrical company employees to fine-tune the clothing to be more comfortable for the user. Working closely with the manufacturer, they have made slight changes in how the cloth pattern was modified to meet final production. An example is the lightweight 40 Calorie vented hood offered by Otex.

The material is of the latest technology. The vented assembly is constructed for balance on the back of the hardhat and the airflow is 27 CFM to prevent fogging of the face shield and provide cooling to the worker. It took over a year to develop the product with the user prior to having the hood "flash tested". This product is now standard issue with many electrical contractors.

Being a small business and having quality providers has resulted in satisfied customers for Miller Safety Consultants. Being a direct supplier for OTEX Protective, another small business means customized customer needs can be met. □

For more information, visit  
Miller Safety Consultants at:  
[www.electricalsafetyproducts.com](http://www.electricalsafetyproducts.com), email  
Vince at: [sales@millersafetyltd.com](mailto:sales@millersafetyltd.com).

**AUTHORIZED**  
**Cementex**  
**The Safety Tool Specialists**  
**DISTRIBUTOR**

Give Vince a call at  
**(703) 367-0404**



Deluxe Maintenance Tool Kit



Class O Glove Kit

# Protect yourself from "Arc Flash"

**ARC FLASH LIFT-FRONT HOOD WITH V<sup>12</sup> HIGH-VOLUME VENTILATOR**  
Compact. Powerful. Reliable

Our V<sup>12</sup> High-Volume Ventilator boasts an unexpectedly quiet, high output (35+ CFM) turbine fan to cool and circulate the ambient air within the hood. Fully protected beneath it's durable ABS shell and added fabric layering, the V<sup>12</sup> High-Volume Ventilator isn't just compliant, it's superior.



**40 CAL/CM2 ULTRALIGHT CLOTHING BY OTEX**

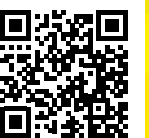
Our new dual-layer Ultralight clothing takes advantage of DuPont's® dedication to scientific advancement and Westex's® industry leading dependability. Weighing in 37% lighter than traditional HRC4 PPE, our Ultralight Clothing is the most innovative contender in the lightweight arena.

**HYBRID LAYERING**

Combined Fabric Weight: 14 oz

Outer Layer: DuPont® Protera  
Color: Navy

Inner Layer: Westex Ultrasoft  
Color: Safety Orange



CALL US TODAY  
**(703) 367-0404**  
OR VISIT OUR ONLINE ELECTRICAL SAFETY EQUIPMENT STORE  
[www.electricalsafetyproducts.com](http://www.electricalsafetyproducts.com)



# SP Products

## *Productivity and Value thru Ideas*

**WE STARTED IN 1966** based on more than just making a fair profit. SP Products Inc's philosophy and dedication to making valid contribution to the industry began with "Econo-Whips". It was a first prefab concept organizing a project ,streamlining and minimizing errors on field.



cable and many other varieties with reamer or reamerless ways of doing that transition as well as conduit offset to meet any imperfection of conduits entering manholes or vaults on job situations when conduits do not center on manholes after concrete has been pour into trenches resulting in offsets.

Our motto is to care for our country, industry and electricians by encouraging everyone to buy and install MADE in U.S.A. innovative products for Safer-Better-Faster jobs and provide opportunities with fair compensation for current and future generation in this country.

We develop and promote products that accomplish these goals and are proud to being electrician's friend by providing them with satisfaction of making valuable contribution to the industry and receiving fair compensation for their ideas.

SP Products provides labor saving devices and products to ease electrical construction projects.

Our overhead box support plates offer a variety of many conduits entering electrical boxes from 4" square to 20"x20" junction boxes meeting support rule for conduits entering and exit these boxes.

Trapeze bracket system are another great family products that offer



No-center stop coupling and prefabricated assemblies followed as a logical step in that direction, helping contractors build their prefab shops, aligning with each step of projects.

Wire harnessing the next prefab product that changed the industry in many ways as going in one pull and you're done wiring unique method of minimizing troubleshooting and waste of material on the job.

Printing each individual wire every 1/2" length to identify circuitry with our UV cured methodology of wire printing

**SP PRODUCTS, INC.**  
Productivity and value thru ideas  
**FOR SAFER BETTER FASTER JOBS**  
We're Proud to be the Electricians' Friend for Over 50 Years!

**IP15a**  
**Chamfer Bit**  
for PVC SCH 40/80

PATENT PENDING  
Smooth Beveled Edge after Chamfering

**IP27b**  
**Electro Post EP-10**  
Box Support Bracket

Mounts on all standard stud widths of 2-1/2", 3-5/8" or 6"  
PATENT PENDING

**IP15b**  
**Chamfer Bit**  
for Aluminum EMT

PATENT PENDING  
Smooth Beveled Edge after Chamfering

**NEW PRODUCTS**

**IP7**  
**4-WAY**  
**CONDUIT & BOX**  
**SUPPORT PLATE**  
with Split Fingers  
for Horizontal or  
Vertical Installation

Use 4-Conduit Block (IP19 or IP20) with QwikBlock (IP21a)

**IP21a**  
QwikBlock  
PATENT PENDING

**IP19/20**  
4-Conduit Block  
PATENTED

**IP3d**  
**PVC Running Thread SCH 40/80**  
Up to 30" Long

PATENT PENDING

**NEW Transition Fittings**  
Saves a Great Deal of Time Repairing Conduit  
The Inside Diameter Remains the Same  
Allows for Trouble Free Wire and Cable Pulls

**Male Threaded PVC Offset**  
**IP3c**

1/2" thru 3" Offset for Conduit Sizes 1/2" thru 6"  
PATENT PENDING

**IP13k**  
Inside PVC to Inside PVC  
PATENT PENDING

**IP13p**  
3/4" MC Cable to PVC  
PATENT PENDING

**IP13q**  
PVC Reducer  
PATENT PENDING

Plus More Being Invented for **SAFER BETTER FASTER** Jobs . . . Call With Your Ideas!





Many of our products EZ PULL EZ READ wire Harnesses, Qwikduct templates, Transition fittings, Conduits offsets, Conduit Box support plates, Trapeze brackets, conduit blocks, wall brackets are some high quality, innovative products providing certifications and meeting industry standards.

A lot of products have been invented by experienced electricians. We are a dedicated NJATC Training partner, striving to improve our industry any way possible.

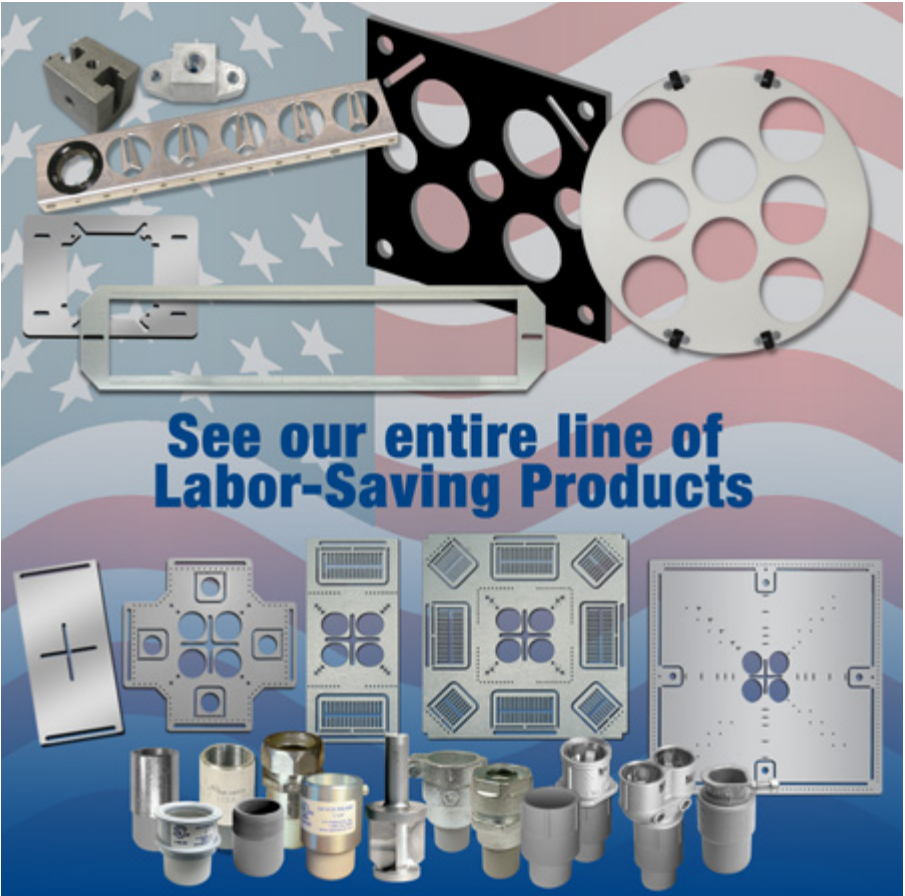
Our manufacturing facilities help keep electricians off the bench providing good paying jobs in our country.

Think of us as your Prefab Shop to meet all high demand requirements and fast paced projects by bidding quicker and securing more jobs helping your company growth in the process.

Visit us at [www.spproducts.com](http://www.spproducts.com) or call 1-800-233-8595 with your IDEAS and we will be your partner on your road to success. □

solutions to trapezing conduit overhead and together with our conduit block products offer many ways of reaching great results by using these simple and common sense high quality products.

*Think of us as your Prefab Shop to meet all high demand requirements and fast paced projects by bidding quicker and securing more jobs helping your company growth in the process.*



## Extend Luminaire Life While Reducing Energy Consumption



Appleton™ Mercmaster™ Connect LED

The Appleton™ Mercmaster™ Connect LED by Emerson is designed to illuminate hazardous and harsh industrial locations with integrated motion and illuminance sensors. Paired with Emerson’s Plantweb Insight Connected Lighting Application, operators have access to lighting usage data and sustainability analytics.

The Mercmaster Connect LED provides facility managers with continuous monitoring of their LED lighting with real-time insights gained into sustainability goals, diagnostics and lumen levels from any remote location at dramatically lower costs as compared to wired alternatives, with faster installation time and minimal disruption to plant operations.

Learn more at: [masteringled.com](http://masteringled.com)

APPLETON™

The Emerson logo is a trademark and a service mark of Emerson Electric Co. © 2021 Emerson Electric Co.



CONSIDER IT SOLVED™



# Elliott Electric Supply Forms Board of Directors

Elliott Electric Supply introduced a new Board of Directors that reflects their focus on internally-directed management of the business. Elliott managers make up six of the seven board members. Rusty Rust, President of Commercial Bank of Texas, is the only non-employee. Robert Flores was elected Chairman, and Bill Elliott was elected president. The remaining four board members are Phil Hale, Doug Blevins, Greg Fitzgerald, and Chris Petty.

Among other business, Blevins, Rust, and Elliott were appointed to a search committee to identify a replacement for Elliott. With more than 50 years invested in the company, Bill feels that his age dictates the need for a younger person in his role. He will remain with the company until the new president is comfortable in their position. Local management with centralized support has allowed Elliott Electric Supply to achieve phenomenal growth with no debt. They believe this Board understands our business and will create

additional opportunities for success.

“Even though Elliott Electric has always been open to new ideas and discussion, we now have an outstanding opportunity to inject diverse perspectives and opinions into a focused, decision-making process,” Elliott says. “It’s impressive to realize that the people included in this board who will lead our company have over 200 years of collective experience in the electrical industry.”

Started in Nacogdoches, TX in 1972, Elliott Electric Supply hosts over 170 locations in 11 states, with annual sales exceeding \$2 Billion. They are ranked 8th largest electrical distributor in the nation by Electrical Wholesaling Magazine in their June 2023 edition.

Elliott, the company’s founder, was NAED’s 2009 Arthur W. Hooper Achievement Award recipient, which is presented to an individual who has an exceptional career in distribution and has had a positive impact on NAED and the industry. Rust has served as the president of Commercial Bank of

Texas since 2013. Rust had become the 134th chairman of the Texas Bankers Association, the nation’s largest state bankers association.

Flores is Elliott Electric Supply’s Chief Financial Officer, and has been with Elliott for 38 years. He oversees the Credit, Accounts Payable, and Legal Departments. Hale is the company’s Chief Information Officer and has been with the company for 36 years. Hale is responsible for a team of software developers, web and app developers and employee helpdesk troubleshooting.

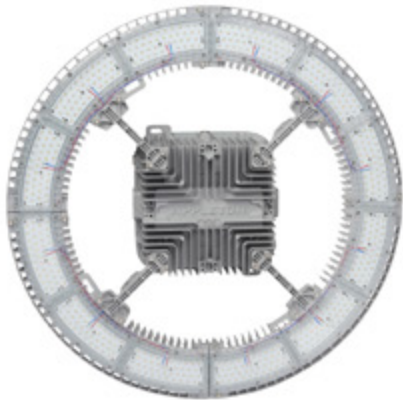
Blevins, Fitzgerald and Petty are regional managers who oversee large portions of the company’s business. Blevins has been with Elliott Electric Supply for 37 years and is responsible for 29 stores in the Dallas / Fort Worth Metroplex. Fitzgerald has been with the company for 33 years and has 20 branches in Houston, TX; Atlanta, GA and Nashville, TN. Petty has been with Elliott for 30 years with 32 locations in Austin, TX; San Antonio, TX; McAllen, TX; Phoenix, AZ and Denver, CO. □



Elliott Electric Supply’s new Board of Directors met on June 22, 2023. Pictured Left to Right: Chris Petty, Phil Hale, Doug Blevins, Bill Elliott, Greg Fitzgerald, Rusty Rust and Robert Flores.



## Lighting Your Way at Greater Heights



Appleton™ IHC LED Luminaire

The Appleton™ IHC LED Luminaire by Emerson is the ideal solution to deliver light from mounting heights of 50 to over 100 feet. With outputs up to 90,000 lumens, an IP66 marine and wet location rating, and an ambient temperature range of -40 °C (-40 °F) to 75 °C (167 °F), the IHC was designed to meet the demands of your harsh industrial environment and lighting requirements.

Learn more at: [masteringled.com](https://masteringled.com)

APPLETON™

The Emerson logo is a trademark and a service mark of Emerson Electric Co. © 2021 Emerson Electric Co.

EMERSON

CONSIDER IT SOLVED™



# Russelectric Names California Industrial Sales Manufacturer’s Representative for the Northern California and Northern Nevada Area

*Emergency Power equipment specialists for critical power applications*

Russelectric, A Siemens Business, a leading manufacturer of power control systems and automatic transfer switches, announces that Cal Industrial Sales has been named Russelectric manufacturer’s representative for the territory of Northern California and Nevada (excluding Las Vegas).

Cal Industrial Sales was founded in 1994 on the principle that quality salespeople attract quality manufacturers to provide excellent

customer service and build valued relationships. This philosophy has made Cal Industrial one of the premier manufacturer’s representative firms in the industry for over 30 years. Extensive market and product knowledge and relationships built on trust are key to Cal Industrial’s continued success. Their strong presence with specifying engineers, consultants and end users offers them the ability to achieve sales of data

center, hospital, pharmaceutical, and industrial market applications requiring critical and emergency standby power.

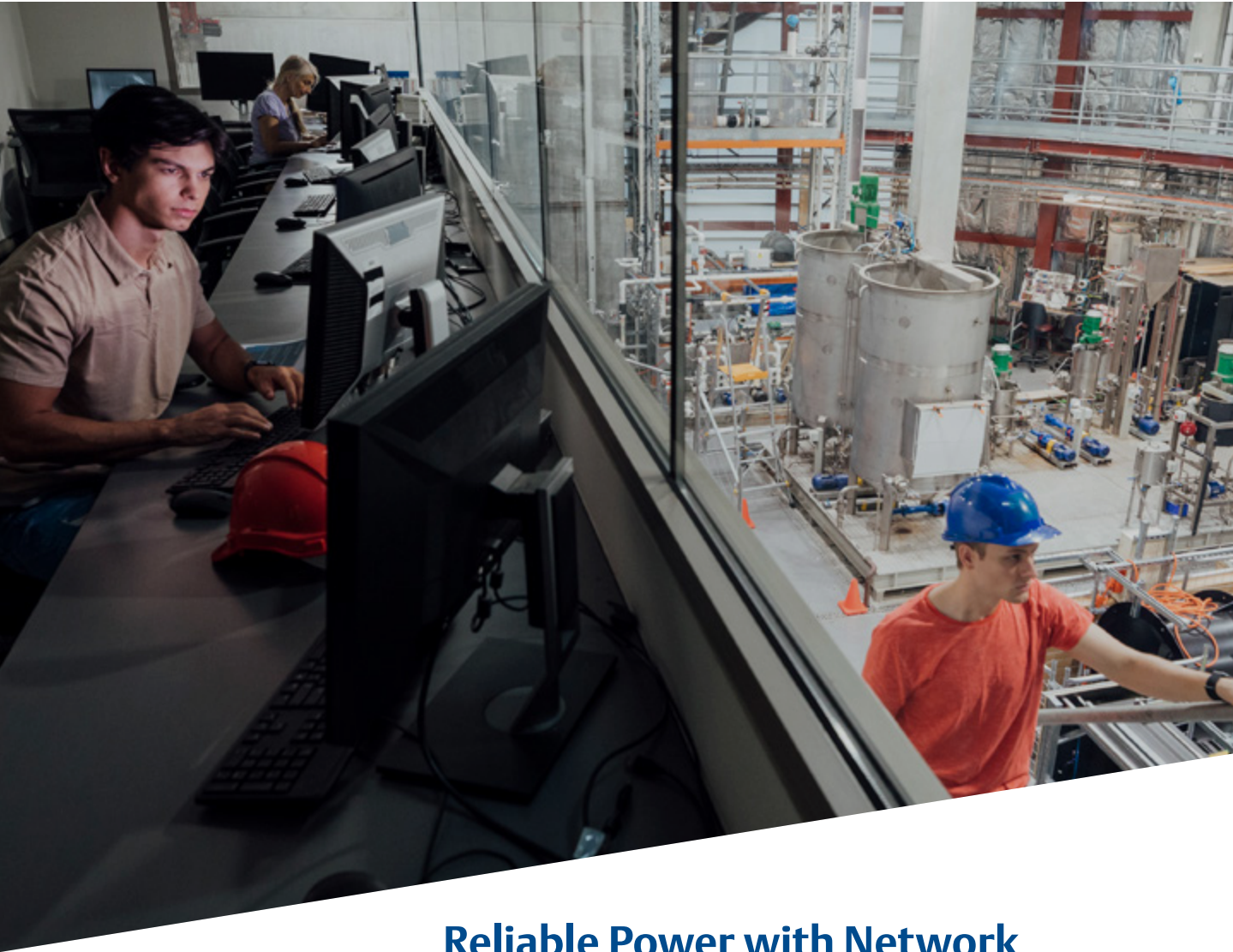
“Russelectric’s customers in Northern California and Nevada will greatly benefit from Cal Industrial’s professionalism, work ethic and technical expertise,” said Javier Carazo, Director of Sales and Business Development.

For more information, visit <https://calindustrial.com/>. □



**ABOUT RUSSELECTRIC**

Founded in 1955, Russelectric, A Siemens Business, provides high-integrity power control solutions for mission critical applications in the healthcare, information technology, telecommunication, water treatment, and renewable energy markets. The company maintains vertically-integrated manufacturing facilities in Massachusetts and Oklahoma, where it designs and builds a full line of automatic transfer switches, switchgear, and controls. Russelectric products carry the longest and most comprehensive warranty in the industry, and are backed by a team of expert factory-direct field service engineers. To learn more about Russelectric products and the company’s commitment to customer satisfaction, visit [www.russelectric.com](http://www.russelectric.com), call (781) 749-6000, or email [info@russelectric.com](mailto:info@russelectric.com).



## Reliable Power with Network Communications



*SolaHD™ Communication Module (SCM)  
and SDN-D High Performance DIN Rail  
Series Power Supplies*

Power interruptions and failures can be detrimental to critical plant equipment or processes resulting in increased downtime, plant shutdowns, production loss, and risk of safety and environmental incidents. By integrating the SolaHD™ Communication Module (SCM) and SDN-D High Performance DIN Rail Series Power Supplies by Emerson into plant equipment and processes, operators and service technicians have the ability to monitor diagnostic data, alarms, and events, maintaining critical process availability.

**Learn More at: [www.solahd.com](http://www.solahd.com)**

**SOLAHD™**

The Emerson logo is a trademark and a service mark of Emerson Electric Co. © 2023 Emerson Electric Co.



**CONSIDER IT SOLVED™**



**new**  
**PRODUCTS**

**Engineered for the Professional:  
DEWALT Announces New 20V MAX\* XR® 3/8  
in. & 1/2 in. and XTREME™ 12V MAX\* 1/4 in. &  
3/8 in. Sealed Head Ratchets Delivering Power,  
Versatility and Durability**

*Brushless motor provides 75 ft-lbs. of max torque  
and a no-load speed of 0-300 RPM in XR® model and 50 ft-lbs. of max torque and no-load  
speed of 0-450 RPM in XTREME™ model*

DEWALT, a Stanley Black & Decker brand and leader in total jobsite solutions, today announced two new sealed head ratchets: the 20V MAX\* XR® 3/8 in. and 1/2 in. (DCF510) as well as the XTREME™ 12V MAX\* 1/4 in. & 3/8 in. (DCF500). The ratchets are ideal for automotive, electrical and mechanical as well as maintenance, repair and operations (MRO) professionals. The 20V MAX\* XR® Sealed Head Ratchet provides users the power, versatility, and durability needed to tackle tough fastening jobs, thanks to a brushless motor and ratcheting mechanism that delivers 75 ft-lbs. of max torque and a no-load speed of 0-300 RPM. The XTREME™ 12V MAX\* model is ideal for fastening and removing nuts, bolts, and other fasteners in tight areas with an impressive 50 ft-lbs. of max torque and no-load speed of 0-450 RPM.

The new Sealed Head Ratchets are designed with features in mind for our user's most demanding jobs. The innovative sealed head design and glass-filled nylon tool housing helps provide protection against oils and automotive solvents meeting the needs of pros across industries on any jobsite.

The new interchangeable anvil design allows users to quickly switch between square drives in both models in addition to a 1/4 in. quick change hex with the XTREME™ 12V MAX\* model to complete a variety of applications. The low-profile head offers accessibility in tight workspaces, while the variable speed trigger and forward/reverse switch allow users to quickly change speed and direction to maximize productivity. The ratchets also feature a trigger lock that helps prevent accidental activation and an onboard LED work light to help illuminate dark areas.

**For more information, visit  
[www.dewalt.com](http://www.dewalt.com)**



**Milwaukee® Delivers Disruptive Performance and Size  
in New Brushless Solutions**

Milwaukee Tool continues to deliver innovation in Drill/Drivers, Hammer Drills, and Impact Drivers with the next generation of M18™ Compact Brushless tools. Featuring a disruptive combination of performance and size, the new M18™ Compact Brushless ½" Drills and M18™ ¼" Hex Impact Drivers improve access in tight spaces with more compact designs while providing faster application speeds and more capability to increase productivity.

**M18™ Compact Brushless ½" Drill**

The new M18™ Compact Brushless ½" Drill and M18™ Compact Brushless ½" Hammer Drill are designed for the needs and applications of the Service Trades as well as the Residential Electrician, Plumber, Remodeler, and HVAC Technician. The next generation delivers more capability and faster applications while measuring more than ¾-inches shorter

compared to previous generations to improve access in tight applications and reduce user fatigue. The drills continue to feature metal chucks and gearcases to deliver professional durability on the jobsite. Also available as a hammer drill for light-duty concrete drilling applications, Milwaukee's new M18™ Compact Brushless ½" Drill and M18™ Compact Brushless ½" Hammer Drill meet the demands of the professional, driving productivity in a compact size.

**M18™ Compact Brushless ¼" Hex Impact Driver**

The new M18™ Compact Brushless ¼" Hex Impact Driver delivers increased power and speed while simultaneously reducing size and improving control when compared to the previous generation. Also designed for the Service Trades as well as the Residential Electrician, Plumber, Remodeler, and HVAC Technician, this lightweight impact driver can access tight spaces and deliver the application speed needed to get the job done quickly. Measuring only 4.4-inches in length and 2.1-inches in width, it is the most compact in its class and has 30% less volume in the head of the tool than the leading competitor. The new M18™ Compact Brushless ¼" Hex Impact Driver has the fastest driving speeds in its class to provide enhanced productivity for users while an all-metal gear case and premium components deliver jobsite durability. For professionals that prefer multiple modes to adjust RPM, the impact driver is also available in a 3-speed version to provide improved control in application.

**For more information, visit  
[www.milwaukeetool.com](http://www.milwaukeetool.com)**



**Compact and Easy to Install DC  
UPS for Harsh Industrial Locations**

The SolaHD™ SDU DC - B Series DIN Rail UPS by Emerson are perfect for mitigating power quality issues, minimizing loss of data and downtime.

The SDU DC - B UPS combines an industry leading compact design, wide operation temperature range -15 °C to +50 °C (+5 °F to +122 °F), enhanced communication and unique installation options to solve common application problems.

Learn more at: [www.solahd.com](http://www.solahd.com)



SolaHD™ SDU DC - B Series DIN Rail UPS

**SOLAHD™**

The Emerson logo is a trademark and a service mark of Emerson Electric Co. © 2021 Emerson Electric Co.



**CONSIDER IT SOLVED™**



## Affordable test equipment for 2023



### Spitfire - Buried Low Voltage Cable Fault Locator

- ◆ Accurate
- ◆ Easy to use
- ◆ High energy output
- ◆ Proven reliability
- ◆ Compact design
- ◆ Lightweight

### Wayfind'r - Impulse cable tracer

- ◆ Accurate
- ◆ Easy to use
- ◆ Connects directly to energized cables
- ◆ Distinct signal for easy tracing
- ◆ Traces direct buried and cables in conduit
- ◆ Rugged, compact design

### Impulse Phaser - Cable / phase system

- ◆ Accurately identifies cables in trenches, vaults, conduits and enclosures
- ◆ Identifies jacketed, shielded, cables, even in pipe
- ◆ Accurately identifies phases in multi-conductor cables
- ◆ Easy to understand and use



**TIMCO** INSTRUMENTS, LLC

Phone: (401) 539-7120 Fax: (401) 539-6018  
www.timcoinstruments.com



## "When Disasters Strike, First Responders Rely On Us!"

Our complete control, communication and convenience Utility Truck Console is becoming the new standard for truck fleets of all sizes. Loaded with standard and optional features that maximize ergonomics, productivity, and fleet/telecom standards into a one exceptional Mobile Console Solution.



**MOBILE** DESK  
MOBILE OFFICE SOLUTIONS  
1-877-663-3375  
www.mobiledesk.com

Copyright © 2022 Mobile Desk, LLC All Rights Reserved.



**EASIER TO PULL • EASIER TO CARRY!**

## **PullEase™ aluminum EMT**

**Low friction & lightweight**

**From the original aluminum conduit experts!**



**VISIT US AT NECA BOOTH #836**

**AMERICAN  
CONDUIT**



**www.AmericanConduit.com**

200 Riviera Blvd, St. Augustine, FL 32086  
Phone: 800-334-6825



# AMERICAN MADE. RONK SOLID.

RONK Electrical Industries not only designs and manufactures high-quality products and solutions that help lower costs, increase efficiency, and stabilize power usage, but also provides you and your customers with vast industry knowledge and unbeatable customer service and support.

RONK's Roto-Con® Rotary Phase Converter units manufacture three-phase current from a single-phase supply. This unit is built to allow the use of three-phase motors and equipment where installation of a commercial three-phase supply is impractical or too expensive. Available in Type P, Type D-1, and Type CP, these units are flexible in operating a range of different loads for multiple applications to meet your unique needs, making them easy to install and maintain.

## **RONK**

Sales: 1-800-221-7665 | Service: 1-217-563-8333

[www.ronkelectrical.com](http://www.ronkelectrical.com)



## **RONK ROTO-CON®**

**ROTARY PHASE CONVERTER**



### **COMMON APPLICATIONS**

- Metal and woodworking equipment
- Grain handling and milling
- Battery chargers
- Print shops
- Welders
- Food processing machinery
- Irrigation pumps



### Kohler Releases 26 kW Home Standby Generator

*New KOHLER home generator offers exceptional performance to ensure better peace of mind*

Kohler Co. releases its 26 kW (26RCA) air-cooled home standby generator. This new model rounds out Kohler's air-cooled home generator offering, providing homeowners, dealers and partners with air-cooled backup power solutions from 6 kW through 26 kW.

The 26RCA generator provides "hands-off" automatic operation utilizing the home's fuel sources (natural gas or propane). This offers the homeowner hassle-free security and peace of mind during the entire length of an outage, adding to the overall sense of wellbeing in the home.

Kohler's advanced engineering team enhanced the features of the new 26 kW to outperform current market standards, including:

No generator is quieter\* – The new 26RCA generator offers a gracious experience to the homeowner, and their neighbors, and areas with stringent sound regulations.

\*26kW air-cooled home standby generator (during exercise mode)

No generator is more powerful\* – The 26RCA unit can power circuits in larger homes including demanding loads like heat pumps and air conditioners without sacrificing power to other circuits.

\*26kW air-cooled home standby generator

Most durable air-cooled home standby generator – The 26RCA unit includes a commercial engine with oil level and oil pressure sensors to protect the engine if the generator needs to be left unattended during extended power outages. The engine also includes hydraulic valve lifters that eliminate maintenance due to valve wear, and a heavy-duty commercial crankcase and crankshaft to ensure longevity.

Kohler conducts accelerated generator testing under rigorous load conditions to meet a 20-year life expectancy. Kohler shows its confidence in its generators by including a limited warranty that includes coverage for parts, labor and travel for five full years.

The new 26 kW generator will be offered in 14 color and pattern options, including 10 new exclusive KOHLER colors and 3 Mossy Oak camouflage patterns, along with its popular cashmere color. KOHLER colors and patterns help homeowners make their standby generator complement the aesthetic of their home or stand out to make a statement. These new aesthetic personalization options on KOHLER home generators are unique to the category and further celebrate Kohler's longstanding leadership within color innovation.

For more information, visit  
[www.kohlerpower.com](http://www.kohlerpower.com)



### Bend More with Less: New Industry-First Greenlee® Dual-Shoe Hand Bender

*For the first time bend three sizes with two shoes in one tool for maximum versatility*

Greenlee®, a part of Emerson's professional tools portfolio, introduces a new, innovative hand bender with patent-pending dual-shoe design that delivers precise, quality bends on 1/2" EMT, IMC, and rigid, and 3/4" EMT conduits with one tool. The only dual-groove hand bender on the market, it lets electricians bend more while carrying less with its 2-in-1 shoe design for ease of use and efficiency.

"The Greenlee Dual-Shoe Hand Bender eliminates the hassle of having to carry multiple hand benders to every job site," said Katey Earley, product manager, Greenlee for Emerson. "It combines the sizes from the two most commonly used hand benders into one to increase productivity, and it improves ergonomics with its lightweight design and ability to stand on its own."

Control, stability, and leverage are optimized for more effortless operation thanks to its large foot pedal and wider base; new inner-shoe angle markings make it simple to see measurements when bending shoe-up, SITE-RITE® enhances visibility in low light settings, and cutting is made easier with its integrated conduit holder.

Additionally, the Greenlee Dual-Shoe Hand Bender not only offers exceptional functionality but also helps assure precision by incorporating angle bending markings directly on the tool itself.

For more information, visit  
[www.greenlee.com](http://www.greenlee.com)



**RANDL**  
INDUSTRIES, INC.

**Install Peace of Mind!**

First there was 4 square...  
and now the **REVOLUTIONARY 5 Square® Box!!**

You've struggled with 4 Square boxes for years - you know how small, cramped and time consuming they are. Finally, there is a solution that allows you the space you have always needed.

The **5 Square®** Boxes (5" x 5" x 2-7/8") provide up to 88 in<sup>3</sup> of interior volume which more than doubles that of most existing boxes on the market.

Create a robust and unrivaled infrastructure for the life of your facility with the **5 Square®** Products!

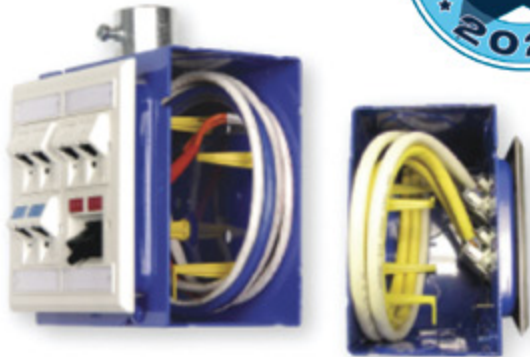


#### Fire Signal



- TWICE THE VOLUME AS MOST BOXES
- SAVE LABOR...INCREASE PROFITS
- ELIMINATES TROUBLESHOOTING TIME AND COST
- FULLY UPGRADEABLE SYSTEM
- SPECIFIED BY ENGINEERING FIRMS, HOSPITALS, UNIVERSITIES & GOVERNMENT AGENCIES
- AVAILABLE IN ZINC OR RED

#### Telecommunications



- INTEGRAL CABLE MANAGEMENT
- SAVE LABOR...INCREASE PROFITS
- FACILITATES MIN. BEND RADIUS REQUIREMENTS
- SUPPORTS CURRENT AND EVOLVING SYSTEMS
- SUPPORTS PoE PLUS
- SPECIFIED BY ENGINEERING FIRMS, HOSPITALS, UNIVERSITIES & GOVERNMENT AGENCIES

**RANDL**  
INDUSTRIES, INC.

P: 509.340.0050 • F: 509.340.0051  
See our line of telecom & fire signal boxes at: [www.RANDL-INC.com](http://www.RANDL-INC.com)  
*Making Communications & Fire Protection More Reliable & Cost-Effective!*





**SP PRODUCTS, INC.**  
Productivity and value thru ideas  
**FOR SAFER BETTER FASTER JOBS**

**2022 NECA**  
**ShowStopper**  
**WINNER**

# Transition Couplings PVC Bell End Adapter Galvanized Rigid Conduit



**NEW**



**UL** US  
PATENT  
PENDING



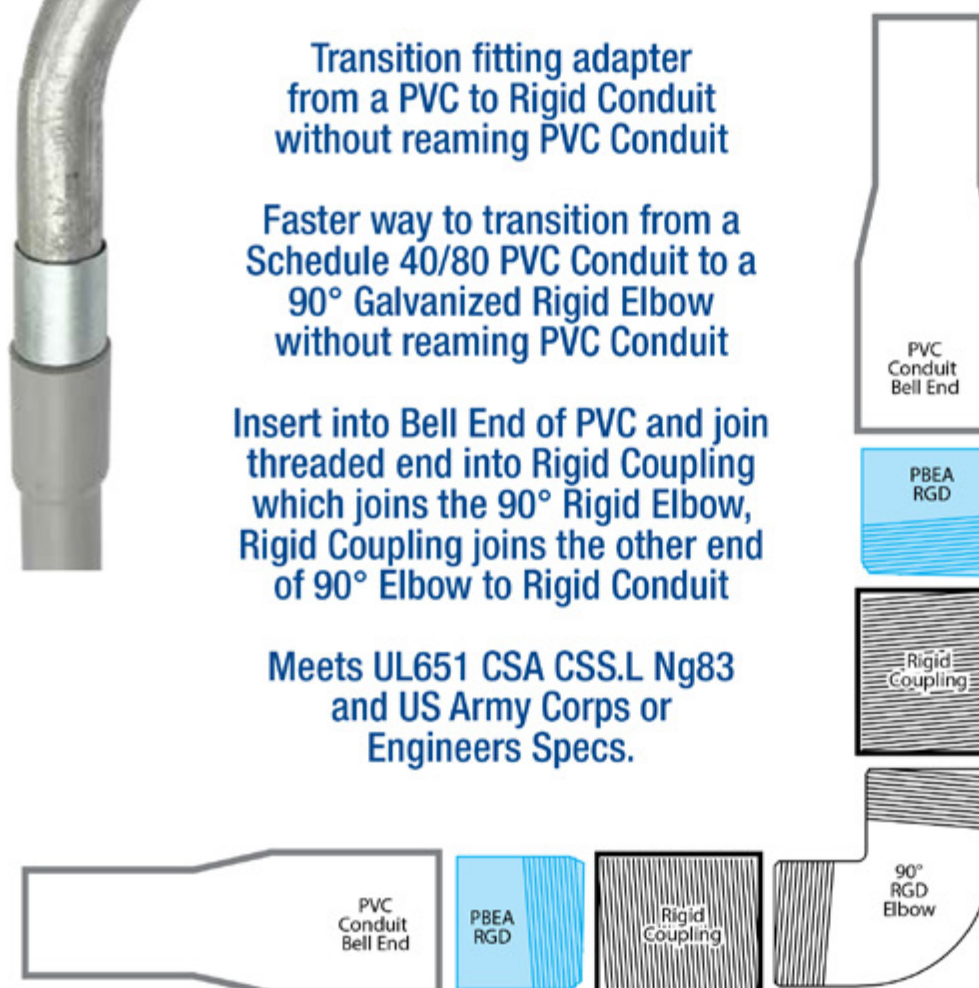
**1/2" thru 6"**

Transition fitting adapter  
from a PVC to Rigid Conduit  
without reaming PVC Conduit

Faster way to transition from a  
Schedule 40/80 PVC Conduit to a  
90° Galvanized Rigid Elbow  
without reaming PVC Conduit

Insert into Bell End of PVC and join  
threaded end into Rigid Coupling  
which joins the 90° Rigid Elbow,  
Rigid Coupling joins the other end  
of 90° Elbow to Rigid Conduit

Meets UL651 CSA CSS.L Ng83  
and US Army Corps or  
Engineers Specs.



Transition Couplings

| Size   | Catalog #    |
|--------|--------------|
| 1/2"   | PBEA/RGD 50  |
| 3/4"   | PBEA/RGD 75  |
| 1"     | PBEA/RGD 100 |
| 1-1/4" | PBEA/RGD 125 |
| 1 1/2" | PBEA/RGD 150 |
| 2"     | PBEA/RGD 200 |
| 2-1/2" | PBEA/RGD 250 |
| 3"     | PBEA/RGD 300 |
| 3-1/2" | PBEA/RGD 350 |
| 4"     | PBEA/RGD 400 |
| 5"     | PBEA/RGD 500 |
| 6"     | PBEA/RGD 600 |

**Customer must satisfy all codes and owners' specifications.**

**SP PRODUCTS, INC.**  
Productivity and value thru ideas



**PATENT PENDING  
PATENTED**



**LABELS APPLY TO PRODUCTS ONLY WHERE SHOWN ABOVE**

730 Pratt Boulevard • Elk Grove Village, IL 60007  
P: (847) 593-8595 • F: (847) 593-8629 • Toll-free (800) 233-8595  
E: info@spproducts.com • www.spproducts.com

**IP13r**



**new**  
PRODUCTS

**Modern Aesthetic, More Control:  
NX Dual Tech Digital LightHAWK Is  
a Combination Smart Wall Switch  
and Digital Sensor with Style**

*Current's latest lighting controls solution combines ultra-convenience, utility and appeal.*

The new NX Lighting Controls Dual Tech Digital LightHAWK (NXSMIR-LH or NXSMDT-LH) from Current is a stylishly refined wall switch that combines leading occupancy sensing technology and multifunctional photocell capabilities into a single package. Allowing for simple plug-and-play connection with NX room control devices, as well as smooth integration with NX wireless- and wired-enabled luminaires, this smart switch sensor offers one convenient solution for all types of indoor scenarios.

**The power to choose.**

The NX Digital LightHAWK is available in two sensor technology options. The NXSMIR-LH sensor includes passive infrared (PIR) technology for occupancy detection as well as photocontrol for daylight harvesting, while the NXSMDT-LH sensor includes these capabilities in addition to ultrasonic (US) sensing for occupancy detection.

Users can quickly configure different NX Digital LightHAWK settings with the help of the NX Lighting Controls App (Android and iOS devices), including the ability to tailor motion detection technologies (when using NXSMDT-LH) to function as PIR only, US only, or in Dual Tech mode. And with up to four configurable rocker-style switches plus access to the ever-growing NX Switch Type Library, there is a multitude of control variations for specifiers to utilize to solve different challenges. Additionally, the sensors can function in lightbar mode to provide a location indicator for wayfinding in low light environments.

"NX LightHAWK is fully programmable for both the switch and occupancy technologies, so it is a truly versatile and code compliant device," says Andrew Klas, Product Manager for Current. "It also allows for simple plug-and-play connection with NX-brand room controllers, or smooth integration with NX-brand wireless and wired luminaires, so you get the breadth and flexibility to scale from standalone fixture applications all the way to networked enterprise deployments. From single rooms to entire buildings to multilocation properties, we've made it much easier to manage project requirements with one platform that can adapt to virtually any need."

**For more information, visit  
[www.currentlighting.com](http://www.currentlighting.com)**

**Eaton's Wiring Devices Introduces a Duplex Nightlight Receptacle**

Eaton has expanded its family of LED combination nightlights to now include the industry's first duplex receptacle (TR7734) featuring color temperature changing technology (COOL, NEUTRAL and WARM) and four brightness levels. In addition, the duplex receptacle is designed

with two modes of operation – an industry exclusive. In Nightlight mode, the integrated photosensor turns the nightlight ON/OFF based on the ambient light in the space. The Guidelight mode allows users to override the photosensor for continuous nightlight operation. The TR shutters provide compliance with 2017 and 2020 NEC.

Additional features include:

- LED offers four levels of brightness in Guidelight mode, OFF – LOW – MEDIUM – HIGH
- Users can dim the LED up/down to desired levels of brightness while in Nightlight mode
- Select from three colors temperatures, COOL – NEUTRAL – WARM, in both modes
- Available in White (W) and Light Almond (LA) finishes
- Provides the user with a duplex receptacle design with an integrated nightlight
- TR shutters provide compliance with 2017 and 2020 NEC

**For more information, visit  
[www.Eaton.com/nightlightreceptacles](http://www.Eaton.com/nightlightreceptacles)**



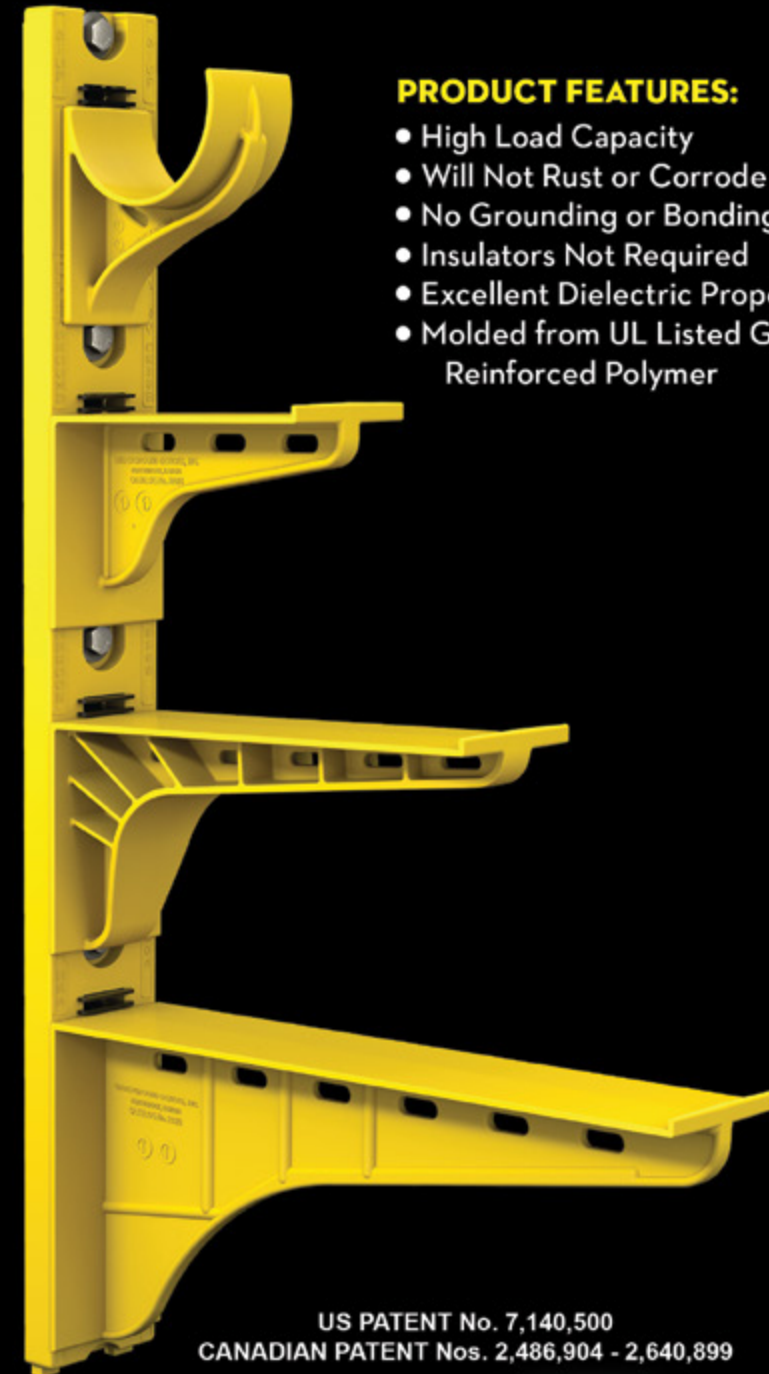
# The Heavy Duty Nonmetallic CABLE RACK

For Power and Communications Manholes And Vaults



**PRODUCT FEATURES:**

- High Load Capacity
- Will Not Rust or Corrode
- No Grounding or Bonding
- Insulators Not Required
- Excellent Dielectric Properties
- Molded from UL Listed Glass Reinforced Polymer



US PATENT No. 7,140,500  
CANADIAN PATENT Nos. 2,486,904 - 2,640,899



HDL Arm Lock shown with  
RA04 Arm and CR36-B Stanchion



3HDS - 3" throat saddle shown with  
a cable secured by cable ties.



RA08 - 8" arm shown with three  
cables secured by cable ties.

**UNDERGROUND DEVICES**  
INCORPORATED



420 ACADEMY DRIVE  
NORTHBROOK, IL 60062  
Phone: 847-205-9000 • Fax: 847-205-9004  
Website: [www.udevices.com](http://www.udevices.com)



# STRENGTHEN YOUR BUSINESS



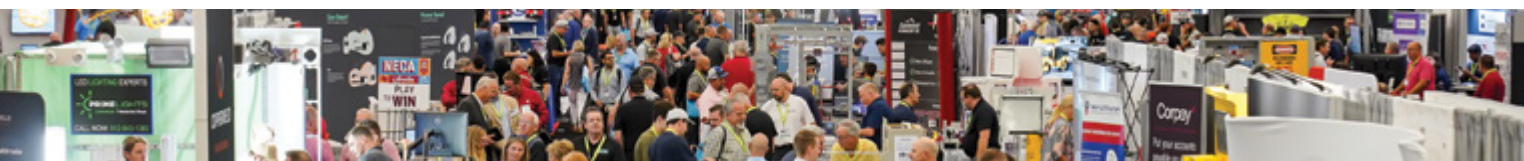
## NECA 2023 PHILADELPHIA SEPTEMBER 29–OCTOBER 2, 2023

There are many opportunities to strengthen your electrical contracting business. Whether you're working on new construction, renovation, or retrofit projects, we have the education, products, and solutions you need to protect and improve your workforce and your bottom line now and for years to come.

**THE NECA SHOW IS OPEN TO THE ENTIRE INDUSTRY.**

**Register today at [necaconvention.org](https://necaconvention.org)**

**Use code **23EPS** for FREE Trade Show admission!**



For more information on attending **NECA 2023 Philadelphia**:  
202.991.6318 [meetings@necanet.org](mailto:meetings@necanet.org)

Follow us on LinkedIn at: National Electrical Contractors Association or on Facebook and Twitter @necanet



Power Quality Analyzers & Loggers

## CONNECT DIRECTLY TO AND SAFELY MONITOR UP TO 15KV

### MODEL 15KVPSET VOLTAGE PROBES

THE MODEL 15KVPSET VOLTAGE PROBES ALLOW CONNECTING POWERSIGHT POWER ANALYZERS DIRECTLY TO 3-PHASE VOLTAGES UP TO 15 KILOVOLTS. NORMALLY, PROFESSIONALS WHO WISH TO MEASURE 12,470 VOLT LINES NEED TO LOCATE OR INSTALL A PT (POTENTIAL TRANSFORMER) IN ORDER TO MONITOR MEDIUM VOLTAGES. THE 15KVPSET ALLOWS DIRECT CONNECTION OF MEDIUM VOLTAGES TO POWERSIGHT ANALYZERS. SHOWN WITH OPTIONAL HOT STICKS, THE 15KVP HAS SHEPHERD HOOKS FOR HANGING ON BARE CABLE, TAPING

OR BOLTING TO BUS BAR, OR ANY OTHER CONNECTION THAT IS NEEDED. THE 15KVPSET COMES DISASSEMBLED IN ITS OWN COMPACT CANVAS CARRYING CASE.

SCAN ME



The World's Only  
Medium Voltage  
Direct Connection  
Solution for Portable  
Power Analysis.



15 KVP Voltage Probe  
(Single)

15KVPSet  
(3 Probes, 9 Hot Sticks, Case)

BUY • RENT • TRADE IN

## MONITOR ANY POWER SOURCE OR LOAD



VERIFYING BACKUP POWER  
LOAD STUDIES  
COST & ENERGY ANALYSIS  
100V – 4160V MOTORS  
POWER QUALITY  
COMMISSIONING  
HARMONIC DISTORTION  
PREDICTIVE MAINTENANCE  
DC POWER TESTING  
400HZ MONITORING  
AND MUCH MORE

COMPACT - CAPABLE - VERSATILE  
POWER ANALYZERS

IT'S ALL WE DO.

SCAN ME



The World's Only  
Medium Voltage  
Direct Connection  
Solution for Portable  
Power Analysis.



Products in Stock!



Most Orders Ship  
in 1-2 Days!

**PowerSight.com • [sales@powersight.com](mailto:sales@powersight.com) • 1-925-444-7027**



advertiser  
INDEX

This advertiser index is compiled as a courtesy to our readers. While every effort is made to provide a complete and accurate listing of companies and page numbers, the publisher is not responsible for errors. **Click the company name or page number to see their advertisement.**

| Company                       | PG# | Company                            | PG#    |
|-------------------------------|-----|------------------------------------|--------|
| 2023 NECA SHOW                | 30  | POWERSIGHT / SUMMIT TECHNOLOGY INC | 31     |
| AIDA CORPORATION              | 1   | RANDL INDUSTRIES                   | 25     |
| AMERICAN CONDUIT              | 22  | RONK ELECTRICAL INDUSTRIES         | 23     |
| APPLETON / EMERSON            | 13  | SOLAHD / EMERSON                   | 17     |
| APPLETON / EMERSON            | 15  | SOLAHD / EMERSON                   | 19     |
| CONDUIT REPAIR SYSTEMS        | 4   | SP PRODUCTS INC                    | 3      |
| iTOOLco                       | IFC | SP PRODUCTS INC                    | 11     |
| iTOOLco                       | IBC | SP PRODUCTS INC                    | 26, 27 |
| KRENZ & COMPANY               | 32  | SP PRODUCTS INC                    | BC     |
| MILLER SAFETY CONSULTANTS LTD | 7   | TIMCO INSTRUMENTS, LLC             | 20     |
| MOBILE DESK                   | 21  | UNDERGROUND DEVICES                | 29     |
| PHOENIX CONTACT USA           | 5   |                                    |        |

When it comes to transformer cooling fans, Krenz-Vent is the industry recognized gold standard. Our leadership position is earned through 80+ years of R&D plus our superior engineering and customer service. You can rest easy when you specify Krenz fans.

**ENGINEERED TO COOL**  
There is no comparison.

**KRENZ & COMPANY, INC.**

KRENZVENT.COM • 262.255.2310 • KRENZ@KRENZVENT.COM

**BONUS FEATURE**

**TO VISIT AN ADVERTISER'S WEBSITE, SIMPLY CLICK THE QR CODE OR COMPANY NAME IN THEIR AD.**

**Electrical**  
Products & Solutions

# CORDLESS CANNON 6K

**iTOOLco.**  
WWW.iTOOLco.com | 865.670.3713

f i t y in

**TOP PRODUCTS 2022**  
Electrical Products & Solutions

Speed, versatility, and performance are all yours with iTOOLco's Cordless Cannon 6K™. This portable 6,000 lb. puller is intuitively designed to handle all of your day-to-day wire pulls.

The built-in capstan switch automatically turns the puller on and off. Simply tug on the rope to start the pull and slack off the rope to shut it down. Delivers dynamic performance in remote locations or areas where power is not yet available.





# SPPRODUCTS, INC.

Productivity and value thru ideas  
**FOR SAFER BETTER FASTER JOBS**

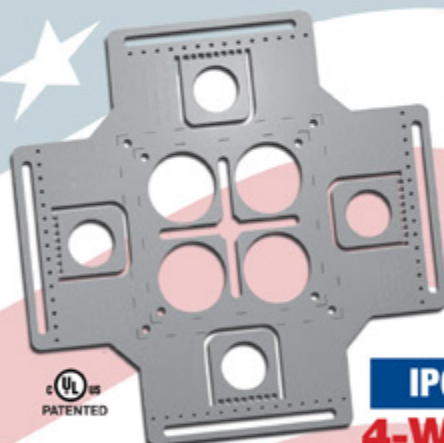


We're Proud to be the Electricians' Friend for Over 50 Years!

**IP5**

**"The Original"**

Enter Any KO on Both Sides of the Box



**IP6**

**4-Way**

Enter Any KO on All 4 Sides of the Box Plus 4 Large Open KOs in Center Allows Entering Back of Box



**IP6a**

**2-Way/Half**

Enter Any KO on 1 or 2 Sides of the Box Plus Large Open KOs in Center Allows Entering Back of Box



**IP19/20**

4-Conduit Block  
PATENTED



**IP21a**

QwikBlock  
PATENT PENDING

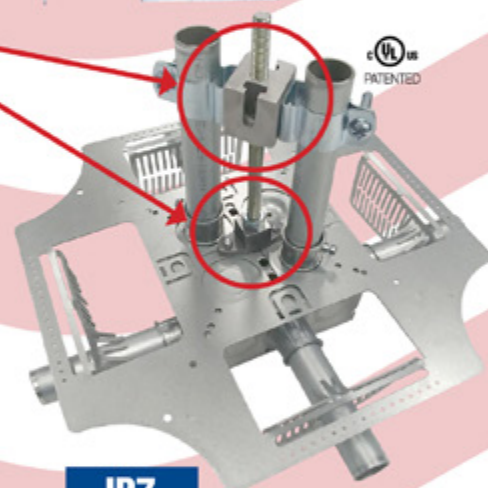
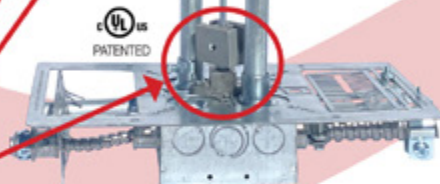
Use 4-Conduit Block (IP19 or IP20) with QwikBlock (IP21a)

**Our Family of Conduit & Box Support Plates Saves Valuable Time & Money!**

**IP6d**

**2-Way**

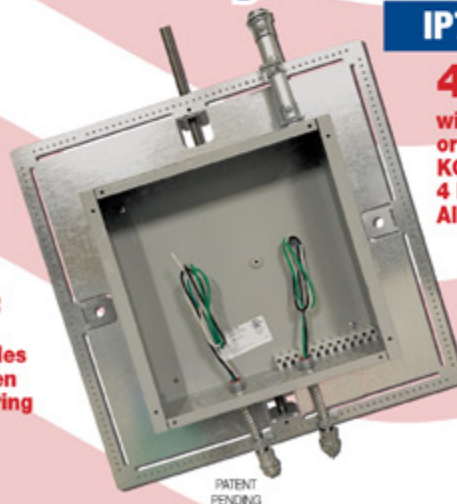
with Split Fingers for Horizontal or Vertical Installation



**IP7**

**4-Way**

with Split Fingers for Horizontal or Vertical Installation. Enter Any KO on All 4 Sides of the Box Plus 4 Large Open KOs in Center Allows Entering Back of Box.



PATENT PENDING

**IP8**

Mount Horizontally or Vertically from One Single Support

**20 x 20**

Supports up to 12 x 12 J-Box

**28 x 28**

Supports up to 20 x 20 J-Box

**MADE IN THE USA!**

Plus More Being Invented for **SAFER BETTER FASTER** Jobs . . . Call With Your Ideas!

SPProducts.com **800-233-8595** info@SPProducts.com