

Electrical

AUGUST 2023

Products & Solutions™

The Purchasing Guide for Electrical Contractors

www.epsmag.net



iTOOLco

10+ Years of Innovation



In-Line Cordless Cable Cutter



Part # ILCCC1000

iTOOLco's in-line Cordless Cable Cutter features 1000 MCM Cu/Al jaws that deliver rapid, installation-ready cuts in seconds. This open jaw in-line cutter is equally balanced, allowing you to cut effortlessly even in the tightest spots. Featuring a LED light ring for precise visual placement of your cut, this compact tool cuts through 1000 MCM copper and aluminum at least 2 times faster than other cutters. Not rated for ACSR.

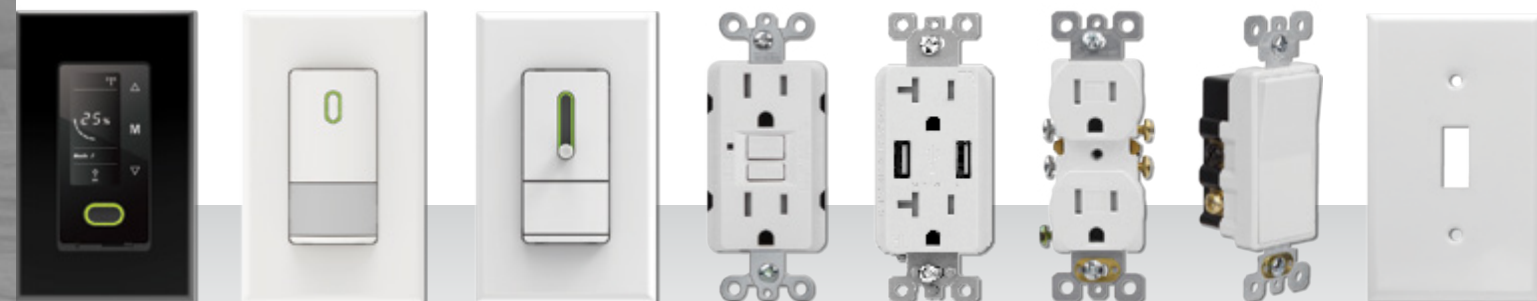
www.iTOOLco.com

865-670-3713



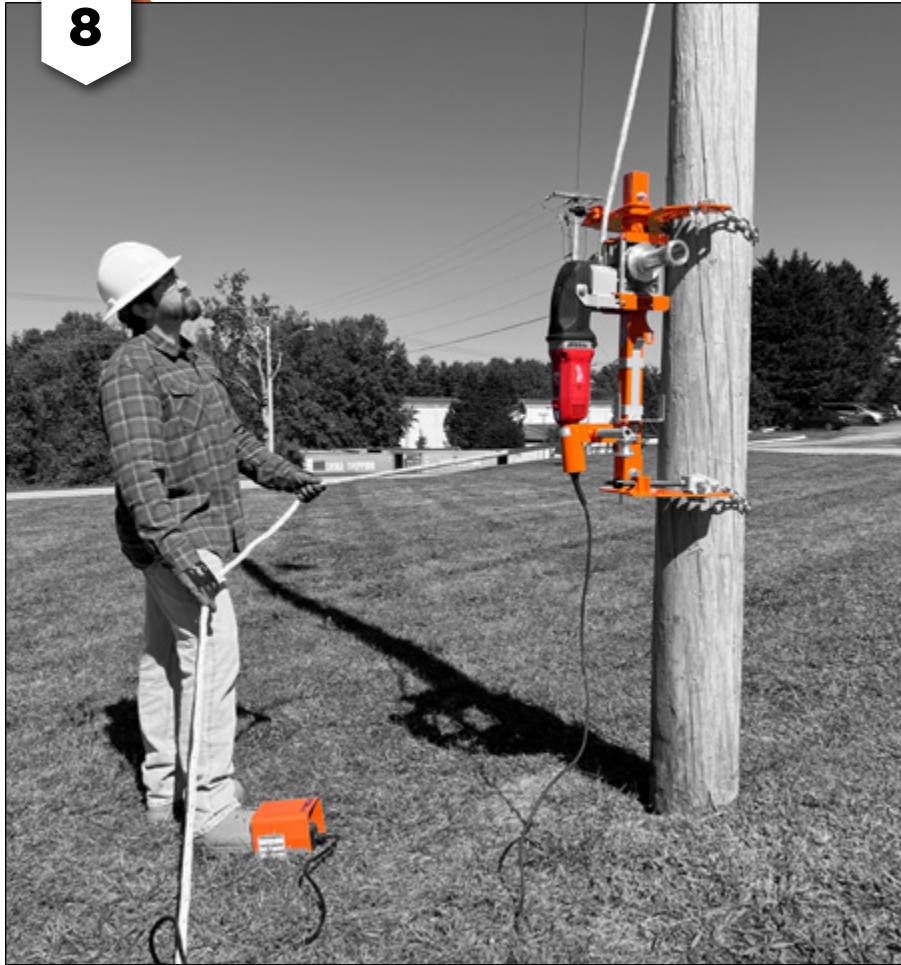
Aida

Uncompromised Quality.
Incomparable Price.



THE **PREFERRED CHOICE** OF BUILDERS,
CONTRACTORS & ELECTRICIANS

Visit Us at Booth #3205, NECA 2023
aidacorp.com



COMPANY PROFILE

- 6 Protect Yourself**
Miller Safety Consultants —
A Leader in Arc Flash Protection

COVER STORY

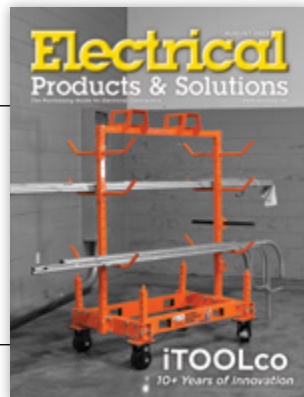
- 8 iTOOLco**
10+ Years of Innovation
BY CALVIN JORDAN

DEPARTMENTS

- 14** INDUSTRY NEWS
18 NEW PRODUCTS
32 AD INDEX

ON THE COVER

Photo courtesy of iTOOLco



Electrical Products & Solutions™

The Purchasing Guide for Electrical Contractors www.epsmag.net

PUBLISHER
Danny J. Salchert

OFFICE MANAGER
Anita Salchert

CREATIVE DIRECTOR
Derek Gaylard

CIRCULATION DIRECTOR
Pam Fulmer

CONTRIBUTING WRITER
Calvin Jordan



PRESIDENT
Danny J. Salchert

EXECUTIVE AND
ADVERTISING OFFICES
2009 Eagle Ridge Drive
Birmingham, AL 35242
phone: 205.981.4541
www.epsmag.net
danny@epsmag.net

Electrical Products & Solutions™ is published twelve times a year on a monthly basis by ABD Communications, Inc., 3591 Cahaba Beach Road, Birmingham, Alabama, 35242, USA. *Electrical Products & Solutions™* is distributed free to qualified subscribers. Non-qualified subscription rates are \$57.00 per year in the U.S. and Canada and \$84.00 per year for foreign subscribers (surface mail). U.S. Postage paid at Birmingham, Alabama and additional mailing offices. *Electrical Products & Solutions™* is distributed to qualified readers in the electrical contracting industry. Publisher is not liable for all content (including editorial and illustrations provided by advertisers) of advertisements published and does not accept responsibility for any claims made against the publisher. It is the advertiser's or agency's responsibility to obtain appropriate releases on any item or individuals pictured in an advertisement. Reproduction of this magazine in whole or in part is prohibited without prior written permission from the publisher.

POSTMASTER: Send address changes to
ABD Communications, Inc., P.O. Box 382885
Birmingham, Alabama 35238-2885

FOLLOW US ON



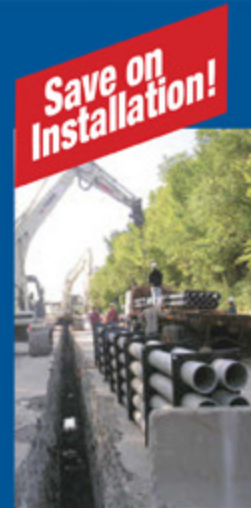
SP PRODUCTS, INC.
Productivity and value thru ideas
FOR SAFER BETTER FASTER JOBS



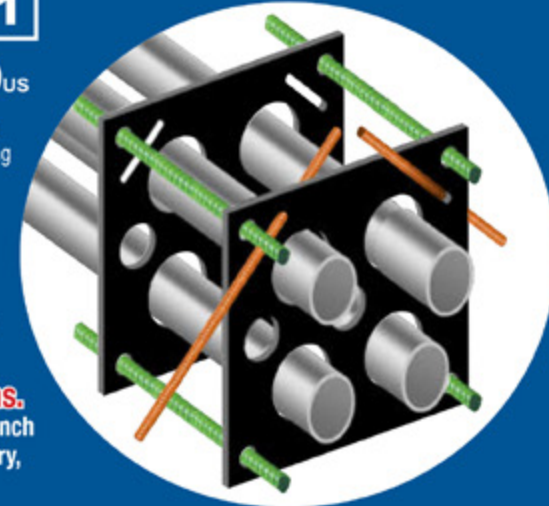
We're Proud to be the Electricians' Friend for Over 50 Years!

Qwik Duct Safer Better Faster

HDPE CUSTOM TEMPLATES
In Any Configuration Required



Assemble Conduit Above Trench-
No Workers Below -
Prevents Injuries and Deaths.
Also Allows Digging a Narrower Trench
for Less: Excavation, Concrete, Slurry,
Backfill & Shoring.



PVC Offset

Sizes 1/2" thru 6"
Meets Flexible Mandrel
Test Requirements

Bore Spacers

Sizes 1/2" thru 6"
Roll assembled conduit into
caissons and under
obstructions



IP13A-F

Conduit Transition Couplings



Save Cost on the Rigid Nipple, Tape & Labor
Use for Entire Job - Not Just for Repair

Plus More Being Invented for SAFER BETTER FASTER Jobs . . . Call With Your Ideas!



SPProducts.com 800-233-8595 info@SPProducts.com

REPAIR CONDUIT IN A SNAP!

No Tape • No Plastic Straps • No Metallic Straps

NO KIDDING!

Designed especially for power, communications and fiber optics.



STEP 1
Remove damaged conduit



STEP 2
Cut split duct conduit to fit



STEP 3
Snap in place

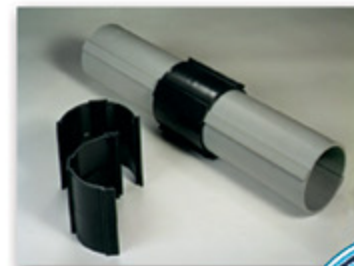
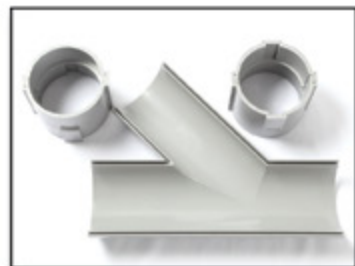
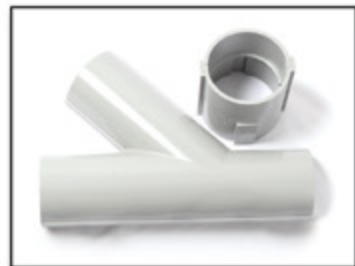


STEP 4
Attach adapters



STEP 5
Finish job in record time

"The World Leader In Split Conduit Products"

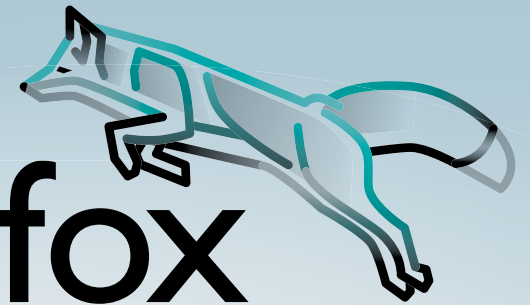


Conduit Repair Systems, Inc.
The World Leader In Split Conduit Products



800.670.1804 • 435.673.8724 fax • crs@conduitrepair.com • www.conduitrepair.com

THE
TOOL fox



TOOLS you can TRUST

Partner with the **TOOL fox** to take advantage of these benefits:

- Robust, durable, and ergonomic industrial wire-processing hand tools
- Cut, strip, and crimp with consistent high-caliber results
- UL Listed when used with Phoenix Contact's quality ferrules
- Backed by a dedicated sales team and technical service
- Covered by a limited lifetime warranty



For more information and videos, please visit
www.phoenixcontact.com/us-TOOLfox.



© PHOENIX CONTACT 2023

Protect Yourself

Miller Safety Consultants — A Leader in Arc Flash Protection

Vince Miller started Miller Safety Consultants, a veteran owned business in 1999. The goal of the business was to provide cost effective safety consulting, employee training such as: confined space entry, fall protection, electrical safety and provide sales of electrical shock and flash protective equipment and fall protection equipment to businesses in the Washington DC area.

Reliance Industries provided fall protection products and much of the sales and training was on behalf of the supplier. In 2000, the owner decided to retire from his business, and Vince decided to discontinue the fall protection line of his business and concentrate more in the electrical training and products.

Vince had been a distributor for Certified Insulated Products (CIP), a manufacturer of electrical insulated tools and electrical arc flash clothing manufactured by Otex in Rochester, New York. As a distributor, Vince provided sales through his internet website and much through relationships with electrical contractors. His training was a classroom environment and was provided directly to customers but he also taught as a sub-contractor for other safety consulting companies and the

Chesapeake Safety Council in Baltimore, Maryland. In 2005, Vince partnered with Vivid Learning Systems in Cascades, Washington to provide on-line training in safe work practices.

Training in electrical safe work practices is still provided locally in the Washington DC area and as a partner with an electrical engineering firm and online. The training is based on the Occupational Health and Safety Administration (OSHA) standards and the National Fire Protection Association (NFPA) 70E standard.

Miller Safety Consultants is now a distributor for Cementex USA, Burlington, New Jersey, for insulated tools and equipment and clothing from OTEX Protective, Rochester, New York.

The majority of his sales of products

are from the web-based store. Cementex is nationally known for their quality equipment. Otex Protective is becoming more known for their quality clothing. For years, they have manufactured their products under other provider labels. Vince chose to not create his clothing line, but to sell the manufacturer product.

Vince has worked with many electrical company employees to fine-tune the clothing to be more comfortable for the user. Working closely with the manufacturer, they have made slight changes in how the cloth pattern was modified to meet final production. An example is the lightweight 40 Calorie vented hood offered by Otex.

The material is of the latest technology. The vented assembly is constructed for balance on the back of the hardhat and the airflow is 27 CFM to prevent fogging of the face shield and provide cooling to the worker. It took over a year to develop the product with the user prior to having the hood "flash tested". This product is now standard issue with many electrical contractors.

Being a small business and having quality providers has resulted in satisfied customers for Miller Safety Consultants. Being a direct supplier for OTEX Protective, another small business means customized customer needs can be met. □

For more information, visit
Miller Safety Consultants at:
www.electricalsafetyproducts.com, email
Vince at: sales@millersafetyltd.com.

AUTHORIZED
Cementex
The Safety Tool Specialists
DISTRIBUTOR

Give Vince a call at
(703) 367-0404



Deluxe Maintenance Tool Kit



Class O Glove Kit

Protect yourself from "Arc Flash"

ARC FLASH LIFT-FRONT HOOD WITH V¹² HIGH-VOLUME VENTILATOR
Compact. Powerful. Reliable

Our V¹² High-Volume Ventilator boasts an unexpectedly quiet, high output (35+ CFM) turbine fan to cool and circulate the ambient air within the hood. Fully protected beneath it's durable ABS shell and added fabric layering, the V¹² High-Volume Ventilator isn't just compliant, it's superior.



40 CAL/CM2 ULTRALIGHT CLOTHING BY OTEX

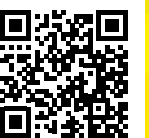
Our new dual-layer Ultralight clothing takes advantage of DuPont's® dedication to scientific advancement and Westex's® industry leading dependability. Weighing in 37% lighter than traditional HRC4 PPE, our Ultralight Clothing is the most innovative contender in the lightweight arena.

HYBRID LAYERING

Combined Fabric Weight: 14 oz

Outer Layer: DuPont® Protera
Color: Navy

Inner Layer: Westex Ultrasoft
Color: Safety Orange



CALL US TODAY

(703) 367-0404

OR VISIT OUR ONLINE ELECTRICAL SAFETY EQUIPMENT STORE
www.electricalsafetyproducts.com



iTOOLco

10+ Years of Innovation

BY CALVIN JORDAN, DIRECTOR OF MARKETING

iTOOLco IS A UNIQUE RESEARCH AND DEVELOPMENT COMPANY that has led the electrical tool industry with their groundbreaking designs since 2001. iTOOLco's inventors & Co-Founders David & Michael Jordan have developed and patented countless innovative products, pushing the envelope of what can be done to improve the lives of electricians and distribution partners alike. Awarded many prestigious accolades, including numerous NECA Showstopper Awards, iTOOLco is known for its groundbreaking work in the electrical field. Based in Clinton, TN – they are dedicated to creating the highest quality American made products, backed by an industry leading 6-year warranty.



With real world experience as electrical contractors, brothers David and Michael Jordan have a deep understanding of the kind of quality, time-saving tools electricians depend on for doing the job right. Over the years iTOOLco has revolutionized the wire pulling market with the introduction of the first ever 12,000 lb. puller - the Cannon 12K, with built in reverse. Their Cordless Cannon 3K & 6K. The first on the market of each, respectively. Capable of reaching areas where power may not be available, these pullers allow users to achieve the same amount of power, without worrying where it will come from. More recently the launch of their MVP20K has changed the game for large pulls, making quick work of even the toughest setups. Featuring an output torque limit dial capable of setting load limits. With a fully hydraulic adjustable arm setup, and the ability to bring power wherever you need it – the MVP20K is perfect for jobs too big for even the 12K. Also known for their Gear Punch, which includes lifetime replacement on draw studs, Tray Rollers, numerous Material Handling solutions, etc., iTOOLco ensures that no matter the job, there is a solution.

Over the years iTOOLco has had their sights set on being leaders of innovation in the industry and 2023 will be no different. With new product launches monthly – there is an absolute push to break boundaries and set precedent within the industry as a standard



for how tools should improve work conditions. With each scheduled launch, iTOOLco's core value of creating a Faster Safer Workspace has never been more clear. By focusing on their 30/30 program, they hope to influence customers to take a more serious look into material handling solutions – where there is usually a lot of money left on the table due to poor time & material

management. The 30/30 program challenges this standard, instead pushing the idea of keeping all materials within 30 feet or 30 seconds of the area where you're working. With the release of countless new material handling solutions, iTOOLco is looking to change the way contractors approach day to day operations.

Wanting to make sure all aspects of

SP PRODUCTS, INC.

Productivity and value thru ideas

FOR SAFER BETTER FASTER JOBS

We're Proud to be the Electricians' Friend for Over 50 Years!

IP15a

Chamfer Bit
for PVC SCH 40/80

PATENT PENDING

IP27b

Electro Post EP-10
Box Support Bracket

Mounts on all standard stud widths of 2-1/2", 3-5/8" or 6"

PATENT PENDING

IP15b

Chamfer Bit
for Aluminum EMT

PATENT PENDING

NEW PRODUCTS

IP7

4-WAY CONDUIT & BOX SUPPORT PLATE
with Split Fingers for Horizontal or Vertical Installation

Use 4-Conduit Block (IP19 or IP20) with QwikBlock (IP21a)

PATENTED

IP19/20

4-Conduit Block
PATENTED

IP21a

QwikBlock
PATENT PENDING

PVC Running Thread SCH 40/80 Up to 30" Long

PATENT PENDING

IP3d

NEW Transition Fittings
Saves a Great Deal of Time Repairing Conduit
The Inside Diameter Remains the Same
Allows for Trouble Free Wire and Cable Pulls

IP13k

Inside PVC to Inside PVC
PATENT PENDING

IP13p

3/4" MC Cable to PVC
PATENT PENDING

IP13q

PVC Reducer
PATENT PENDING

Male Threaded PVC Offset

IP3c

1/2" thru 3" Offset for Conduit Sizes 1/2" thru 6"

PATENT PENDING

Plus More Being Invented for **SAFER BETTER FASTER** Jobs . . . Call With Your Ideas!

SPProducts.com 800-233-8595 info@SPProducts.com

10 | Electrical Products & Solutions | AUGUST 2023

40% of contractor TIME
16.8% of contractor INCOME = MATERIAL HANDLING

PIPE AND PREFAB CART™

Unique customizable design allows for ultimate flexibility to match the requirements of your job. Easily stackable with two top mount pockets for in line or side lifting of the loaded cart into trucks, through doors, and onto docks or upper levels.

WPC2000

44" L x 24" W x 32" H (loading)
36" L x 24" W x 32" H (unloading)
100 lbs.
2000 lbs. total load capacity or
200 lbs. per one 1000' coil at each level

FLEX WIRE CART™

Carry ten 2500' spools of wire, twenty 500' spools of wire or cable, & up to eight packs of wire. The design allows for custom placement of wire bars to maximize jobsite flexibility and carrying capacity.

FWC100

21" L x 24" W x 47" H x 32" W
100 lbs.
700 lbs. total capacity

MC CART™

Transport up to two 1000' spools and one 250' coil of MC cable at one time. Rough-in an entire suite using a single cart. Two detachable Cable Mates hold one 250' coil of MC cable. Unique front-loading carriage eliminates the need to lift heavy spools. Loading two 1000' spools is as easy as flipping the cart forward and rolling the spools into the axle saddle.

MC2000

40" L x 20" L x 27" W x 20" H
40 lbs.

VISUAL MATERIAL CENTER™

Keep the jobsite neat and organized. Holds up to 24 - 2500' spools of wire, up to 13 - 25A light fixtures or 3000 lbs. of material. Access materials from two sides and it fits through 30" doors. Four lifting eyes and top design forklift pockets make quick work of transporting materials to, from and around the jobsite.

VMC2000

34" L x 37" W x 38" L x 27" H
240 lbs.
2000 lbs. total capacity

ROLL JACKS 3072™

Heavy wood spools and steel compartmentalized reels turn on a dime with innovative heavy duty casters that spin easy for precise control on the jobsite. Field loading and unloading spools from 30" to 72" in diameter is a snap.

RJ3072

40" L x 40" W x 42" H
400 lbs.
2000 lbs. total capacity

HEAVY DUTY PIPE CART™

Move large bundles of pipe or conduit with ease. Built-in forklift pockets allow for jobsite delivery and mobility. Clearance below the load and side rails enable pipe to be loaded or unloaded via forklift. Stackable design maximizes storage footprint.

HDPCC10

40" L x 34" L x 27" W x 20" H
140 lbs.
2000 lbs. total capacity

HDPCC20

40" L x 34" L x 27" W x 20" H
140 lbs.
2000 lbs. total capacity

CABLE MATE 2-PACK™

Feed two 250' coils of MC cable effortlessly and minimize the time and effort spent on the jobsite set up. Perfect for residential tenant build outs and small commercial electrical installations. Convenient folding stand is designed for quick set up and allows detachable Cable Mates to rotate smoothly while feeding conductors.

CM2P

24" L x 24" W x 34" L x 27" H
40 lbs.

MORE PRODUCTIVITY | INCREASED ROI

KEEP MATERIALS WITHIN 30 FEET OR 30 SECONDS OF INSTALLATION

30:30 JOBSITE ADVANTAGE

itoolco.com | 865.670.3713

Residential Electrical Contractors Association

customer care are taken to the highest level, iTOOLco approaches servicing their tools with a different mindset – easy communication & a fast turnaround time. Coming in from the start with an industry leading 6-year warranty, and a service team that not only is responsive – but truly understands that there is a person at the other end of the call was imperative. With a regular

turnaround time of within a week, our in-house service team is determined to get your product back to you as soon as possible. “We understand things happen, and we will do our best to fix the issue and get your tool back to you as fast as possible” said Maria Jordan – head of customer care. “Service to our customers has always been held to a higher standard and that won’t stop anytime soon.”

At this year’s NECA convention iTOOLco has a few tricks up its sleeve as well. With the introduction of their new Material Management System - iTOOLco is changing the approach to their 30/30 program. With one expandable base featuring customizable uprights, the cart takes the end user’s needs fully into consideration. “We have transformed every cart we offer into one customizable unit” says David Jordan, (Co-Owner). Though meeting the needs of the customers is not new to contractors “Now our customers can choose their needs, and we can meet them more easily than ever” said Mike

Jordan (Co-Owner). This cart is being given a preview here in the Electrical Products and Solutions Magazine, and will be available on Oct 1st when the show begins.

But if you really want to see an industry changing product, you will have to stop by booth #200 at the NECA show, where we will reveal a product that will blow the industry away. iTOOLco’s track record for releasing innovations that alter the way the industry works is outstanding - and something BIG is coming. “Everyone will want one, literally every contractor will see it and go, that is a no brainer” said Mike Jordan. However if you want to know more, you’ll have to stop by the booth or sign up for our E-Blasts. The newest game changer is being kept under tight lock and key. Nobody knows what’s coming, but we can promise you will hear about it when they do.

Do you want to find out more or schedule a live demo? Visit us online at www.iTOOLco.com or give us a call at 865-670-3713. □

Extend Luminaire Life While Reducing Energy Consumption

The Appleton™ Mercmaster™ Connect LED by Emerson is designed to illuminate hazardous and harsh industrial locations with integrated motion and illuminance sensors. Paired with Emerson’s Plantweb Insight Connected Lighting Application, operators have access to lighting usage data and sustainability analytics.

The Mercmaster Connect LED provides facility managers with continuous monitoring of their LED lighting with real-time insights gained into sustainability goals, diagnostics and lumen levels from any remote location at dramatically lower costs as compared to wired alternatives, with faster installation time and minimal disruption to plant operations.

Learn more at: masteringled.com

Appleton™ Mercmaster™ Connect LED

APPLETON™

The Emerson logo is a trademark and a service mark of Emerson Electric Co. © 2021 Emerson Electric Co.

CONSIDER IT SOLVED™

12 | Electrical Products & Solutions | AUGUST 2023

Electri-Flex Announces Representation Change for East Coast



ELECTRI-FLEX COMPANY, Roselle, IL, announces the appointment of Synergy Electrical Sales as their new stocking Representative in eastern Pennsylvania, southern New Jersey, and northern Delaware. Synergy Electrical Sales is a

leading professional manufacturer’s representative firm headquartered in Fairless Hills, PA. Synergy prides itself on its comprehensive product and services portfolio and a customer-centric approach that delivers top-quality solutions for residential, commercial, and industrial clients. They value innovation and sustainability, while their team delivers superior performance and exceptional customer service. “We are thrilled to join forces with

Electri-Flex, a company that shares our commitment to innovation and collaboration,” said Larry Rodger, President of Synergy. “The Electri-Flex brand has a well-deserved reputation for excellence in the industry and we are extremely proud and excited to carry their banner for a long time to come.” To view a complete map of all Electri-Flex representatives, please visit www.electriflex.com/find-a-sales-representative/. □

ABOUT ELECTRI-FLEX

Electri-Flex Company, a leader in electrical conduit design and manufacture for over 65 years, produces Liguatite®, the most diverse line of liquidtight flexible electrical conduit in the industry. The company offers custom design, engineering, quality assurance, and testing capabilities. For more information on Electri-Flex Company, call (630) 529-2920 or (800) 323-6174; fax: (630) 529-0482; e-mail: mktg@electriflex.com; visit: www.electriflex.com; or write: 222 West Central Avenue, Roselle, IL, 60172-1994.



Russelectric Cogeneration Systems for CHP Applications

Offering generator paralleling control, active synchronization and soft loading

Russelectric, A Siemens Business, a leading manufacturer of automatic transfer switches and power control systems, manufactures UL-listed cogeneration systems for combined heat and power (CHP) applications in which the generator sets are run to serve the connected load and heat is also recovered for other uses. Designed and built for mission critical facilities such as healthcare, research and development and campus facilities, Russelectric cogeneration systems are designed to provide maximum protection for operators and maintenance personnel and

to minimize the danger of operator error. All Russelectric cogeneration systems are UL listed, offer programmable logic controller (PLC) system controls, and are supervisory control and data acquisition (SCADA)-capable. They feature utility/generator and other power assets paralleling control, and provide active synchronization and soft loading. Systems use a utility-approved interconnecting protective relay system. Russelectric cogeneration power control switchgear may have additional controls and monitoring to optimize heat recovery. The systems can be designed

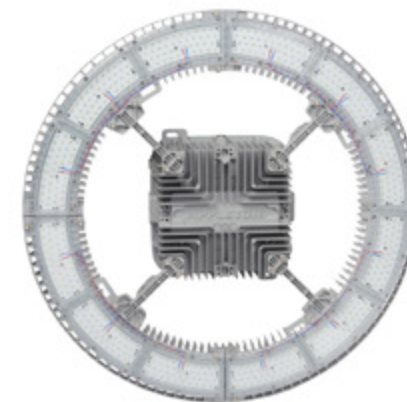
to operate in parallel with the utility to optimize power and heat balance. Russelectric manufactures complete systems in-house. All enclosures, bus, and other structural components are fabricated and fully assembled in Russelectric plants. Factory testing of complete systems is performed prior to shipment. Components are selected to assure the reliable operation of these critical systems. Utility-grade instruments provide both accuracy and visibility. Heavy-duty, switchboard type control switches are rated at a minimum of 25 amps. Protective relays for generator and utility power are utility-grade. UL-listed power circuit breakers with stored energy closing mechanisms provide 5-cycle (maximum) closing for paralleling. Draw-out circuit breakers simplify maintenance. For more information contact us at info@russelectric.com or call us at 1-800-225-5250. □

ABOUT RUSSELECTRIC

Founded in 1955, Russelectric®, A Siemens Business, provides high-integrity power control solutions for mission critical applications in the healthcare, information technology, telecommunication, water treatment, and renewable energy markets. The company maintains vertically-integrated manufacturing facilities in Massachusetts and Oklahoma, where it designs and builds a full line of automatic transfer switches, switchgear, and controls. To learn more about Russelectric, visit www.russelectric.com, call (781) 749-6000, or email info@russelectric.com.



Lighting Your Way at Greater Heights



Appleton™ IHC LED Luminaire

The Appleton™ IHC LED Luminaire by Emerson is the ideal solution to deliver light from mounting heights of 50 to over 100 feet. With outputs up to 90,000 lumens, an IP66 marine and wet location rating, and an ambient temperature range of -40 °C (-40 °F) to 75 °C (167 °F), the IHC was designed to meet the demands of your harsh industrial environment and lighting requirements.

Learn more at: masteringled.com

APPLETON™

The Appleton logo is a trademark and a service mark of Emerson Electric Co. © 2021 Emerson Electric Co.



CONSIDER IT SOLVED™



WHEN IT'S A CUSTOM JOB CHOOSE OUR PREFAB TEMPORARY AREA LIGHTING

08-00466

08-00468

08-00467

Custom Wiring Options
To Meet Specific Job Needs!

6,000 VOLT
SURGE PROTECTION

50,000 HRS
LED LIFE SPAN

5,000 KELVIN
COLOR TEMPERATURE

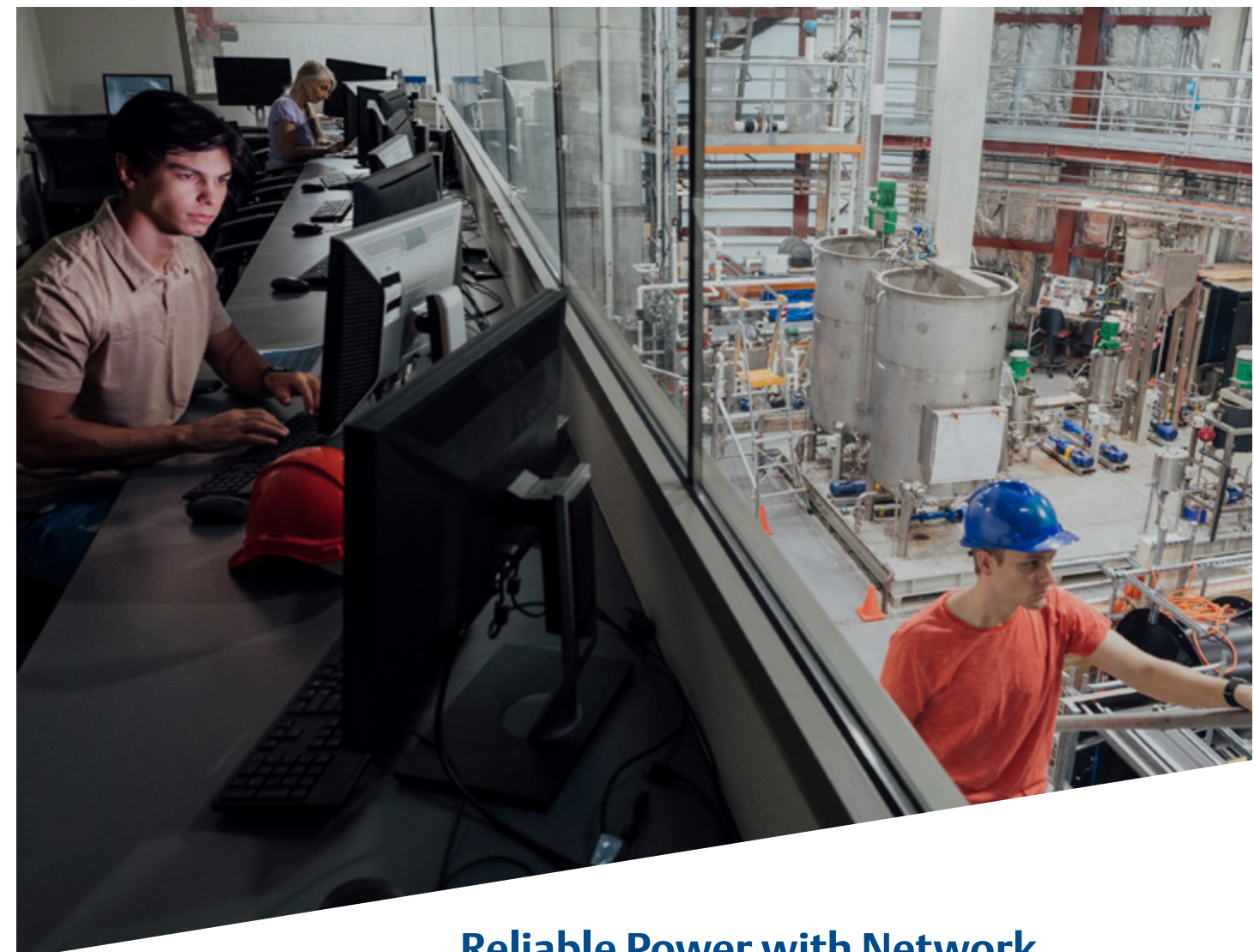
MODELS TO CHOOSE FROM:		
ITEM PN	WATT	LUMEN
08-00466	100W	13,500
08-00467	150W	20,000
08-00468	200W	28,000

FEATURES INCLUDE:

- Tool-Free Easy Access Latches
- 50%/100% Brightness Settings
- 2 Water Proof Strain Relief Connectors
- 1/2" Threaded Knockouts For Custom Fittings
- Custom Wiring Terminal Block
- Foldable Heavy Duty Metal Spring Hook

- Accepts 16 Gauge To 12 Gauge Cord
- Accepts Most Sizes Of MC And NM Cable When Used With Correct Fittings
- Carry Handle And Folding Hook
- Input Voltage 120v-277v AC 50-60hz
- Pack Quantity 2

These Units Are Rated For Outdoor Use When Used With The Included Weatherproof Cord Connections.



Reliable Power with Network Communications



SolaHD™ Communication Module (SCM) and SDN-D High Performance DIN Rail Series Power Supplies

Power interruptions and failures can be detrimental to critical plant equipment or processes resulting in increased downtime, plant shutdowns, production loss, and risk of safety and environmental incidents. By integrating the SolaHD™ Communication Module (SCM) and SDN-D High Performance DIN Rail Series Power Supplies by Emerson into plant equipment and processes, operators and service technicians have the ability to monitor diagnostic data, alarms, and events, maintaining critical process availability.

Learn More at: www.solahd.com

SOLAHD™

The Emerson logo is a trademark and a service mark of Emerson Electric Co. © 2023 Emerson Electric Co.



1-866-4VOLTEC

VOLTECPowerLighting.com
customerservice@voltec-industries.com

CONSIDER IT SOLVED™

new
PRODUCTS

DEWALT Introduces Industry's Highest Rated Max Torque Cordless 1/2 in. Impact Wrench with Up To 71% More Torque*****

DEWALT recently announced the new 20V MAX* XR® Brushless Cordless 1/2 in. High Torque Impact Wrench (DCF961), the industry's highest rated max torque cordless 1/2 in. impact wrench** that delivers 1200 ft-lbs of max fastening torque and 1750 ft-lbs of max breakaway torque. This impact wrench features new technology that automatically provides an increase in power after four seconds of impacting, aiding in loosening stubborn fasteners and completing heavy-duty fastening applications. The DCF961 also features 3 Speeds and PRECISION WRENCH™ technology to help prevent overtightening and fastener run-off as well as BATTERYGUARD™, a shock-absorbing battery-to-tool connection to help reduce battery wear and tear.

The 20V MAX* XR® Brushless Cordless 1/2 in. High Torque Impact Wrench is available now for presale as a bare unit (DCF961B) or kitted with a DCB205G 20V MAX* Oil-Resistant 5 AH battery, charger and kit bag (DCF961GP1) where DEWALT products are sold.

* Maximum initial battery voltage (measured without a workload) is 20 volts. Nominal voltage is 18.

** Based on Rated Torque published by pro-grade power tool manufacturers for their cordless impact wrenches

*** Rated Max Fastening Torque vs. DCF899 Impact Wrench with Rated Max Fastening Torque of 700 ft-lbs.



**For more information visit
www.DEWALT.com**



Appleton Expands LED Lighting Line with Industrial-Grade Luminaire for Low-Mounting Heights

Appleton has leveraged the rugged features of its hazardous location Mercmaster LED Series to develop an ordinary location luminaire suited for low mounting heights. With an installed profile of only six inches, the depth of Appleton Industrial Mercmaster LED Low Profile Luminaires is approximately 25 percent less than its nearest competitor.

Appleton Industrial Mercmaster LED Low Profile Luminaires yield superior performance in areas with ceiling heights up to 15 feet or where OSHA regulations limit the use of ladders, resulting in lower mounting heights for fixtures. Field changeable globes, 6kV standard surge, lumen outputs up to 5500 lumens, and a gray epoxy powder coat finish also make these luminaires a great option for harsh industrial locations where corrosive atmospheres are encountered.

Appleton Industrial Mercmaster LED Low Profile Luminaires are especially valuable in transitioning facilities from older HID fixtures up to 175 Watts to energy-efficient LED lighting technology. Consuming 65 percent less energy, the LED model maintains the same look and feel as its HID counterpart by using

identical housing and mounting hoods. Four field-replaceable globe alternatives -- clear glass, clear polycarbonate, diffused polycarbonate, and prismatic glass refractor -- allow engineers to choose the perfect lighting solution. Seven standard mounting hood designs also give added flexibility to install the luminaires in any location.

Appleton Industrial Mercmaster LED Low Profile Luminaires can be deployed in wet and marine locations and other harsh areas, such as storage areas, tunnels, stairwells, loading docks, parking garages, and food/beverage processing. The luminaires are also available in an Emergency Battery Backup version that offers 90- or 180-minute modes and features a functional diagnostic test that self-initiates every 14 days after initial start-up.

**For more information, visit
www.appletonelec.com.**



Compact and Easy to Install DC UPS for Harsh Industrial Locations



Solahd™ SDU DC - B Series DIN Rail UPS

The Solahd™ SDU DC - B Series DIN Rail UPS by Emerson are perfect for mitigating power quality issues, minimizing loss of data and downtime.

The SDU DC - B UPS combines an industry leading compact design, wide operation temperature range -15 °C to +50 °C (+5 °F to +122 °F), enhanced communication and unique installation options to solve common application problems.

Learn more at: www.solahd.com

SOLAHd™

The Emerson logo is a trademark and a service mark of Emerson Electric Co. © 2021 Emerson Electric Co.



CONSIDER IT SOLVED™

Affordable test equipment for 2023



Spitfire - Buried Low Voltage Cable Fault Locator

- ◆ Accurate
- ◆ Easy to use
- ◆ High energy output
- ◆ Proven reliability
- ◆ Compact design
- ◆ Lightweight

Wayfind'r - Impulse cable tracer

- ◆ Accurate
- ◆ Easy to use
- ◆ Connects directly to energized cables
- ◆ Distinct signal for easy tracing
- ◆ Traces direct buried and cables in conduit
- ◆ Rugged, compact design

Impulse Phaser - Cable / phase system

- ◆ Accurately identifies cables in trenches, vaults, conduits and enclosures
- ◆ Identifies jacketed, shielded, cables, even in pipe
- ◆ Accurately identifies phases in multi-conductor cables
- ◆ Easy to understand and use



TIMCO INSTRUMENTS, LLC

Phone: (401) 539-7120 Fax: (401) 539-6018
www.timcoinstruments.com



"When Disasters Strike, First Responders Rely On Us!"

Our complete control, communication and convenience Utility Truck Console is becoming the new standard for truck fleets of all sizes. Loaded with standard and optional features that maximize ergonomics, productivity, and fleet/telecom standards into a one exceptional Mobile Console Solution.



MOBILE DESK
MOBILE OFFICE SOLUTIONS
1-877-663-3375
www.mobiledesk.com

Copyright © 2022 Mobile Desk, LLC All Rights Reserved.

EASIER TO PULL • EASIER TO CARRY!

PullEase™ aluminum EMT

Low friction & lightweight

From the original aluminum conduit experts!



VISIT US AT NECA BOOTH #836

**AMERICAN
CONDUIT**



www.AmericanConduit.com

200 Riviera Blvd, St. Augustine, FL 32086
Phone: 800-334-6825



AMERICAN MADE. RONK SOLID.

For over 70 years Ronk has designed and built quality electrical products to reduce cost, increase efficiency, and stabilize the power used in your facilities. We pride ourselves on using our decades of industry knowledge to provide outstanding customer support.

A properly applied phase converter allows operation of three-phase equipment from a single-phase service and the simplicity of the three-phase motors and controls are maintained. Ronk manufactures a broad product line and has the experience necessary to provide the best converter for any application.

Ronk's ROTOVERTER® Rotary phase converters balance high power factor loads by employing tapped winding system. ROTOVERTER® is recommended for the operation of a group of motors, or motors with considerable load variations. Use of a single converter in multiple-motor applications can result in lower initial cost and better load flexibility. ROTOVERTER® can handle loads from 1 to 100 HP at full horsepower, with balanced amperages.

Looking for a converter for a constant load application? Consider RONK's ADD-A-PHASE® static phase converter. On most fans or pumps with one or two motors ADD-A-PHASE® offers very good starting torque, and easily accommodates automated controls. ADD-A-PHASE® is very energy efficient, generates no harmonics, and limits inrush on the single-phase lines. ADD-A-PHASE® is also rated to run at full HP with balanced amperages.

Ronk Phase Converters- safe and durable long-term solutions to achieve your goals of efficiency and reliability.

RONK

Sales: 1-800-221-7665 | Service: 1-217-563-8333

www.ronkelectrical.com



RONK'S ROTOVERTER®

ROTARY PHASE CONVERTER



COMMON APPLICATIONS

- Compressors: Refrigeration, air conditioning
- Lift stations
- Pumps: centrifugal, heating systems, turbine
- Grain Dryers
- Multiple small motors

RONK'S ADD-A-PHASE®

STATIC PHASE CONVERTER



COMMON APPLICATIONS

- Valve Actuators
- Pumps
- Piston Type Compressors
- Fans

new
PRODUCTS

Warm Tiles Self-Adhesive, Pre-fabricated Floor Heating Mats Reduce Installation Time and Costs

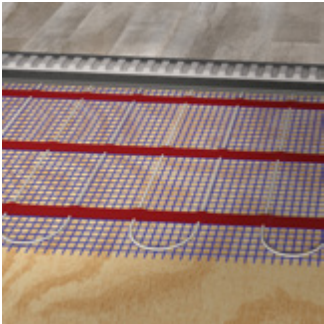
With the country sizzling under an unrelenting heat wave, floor warming may be the last thing building managers and homeowners are thinking about, but they should. Fall's chill is only a few short months away, bringing uncomfortably cold floors and skyrocketing heating bills.

Warm Tiles Self-Adhesive Mats (SAM) from Emerson are an economical solution to warming cold floors that can also help reduce utility bills. Ready to install out of the box, the pre-fabricated mats are ideal for square or rectangular areas, multi-unit flooring, or expansive rooms. Once installed, the mats will gently warm flooring materials as diverse as marble, ceramic, glass and porcelain tile, slate, granite, poured or dimensional stone, laminate, and certain engineered hardwood products. Use costs less than a penny per square foot per day and the mats operate on ordinary electric current.

Installation is fast and easy. SAM mats are simply rolled out and affixed to a subfloor to help reduce installation time and labor costs. The pre-fabricated mats can be re-shaped in the field to fit a non-square floor area by cutting the mat's open-weave plastic mesh. Thinset mortar is laid over the mats to hold them in place, followed by the flooring material to complete the installation.

Available in 120 and 240 Vac, Warm Tiles SAM mats cables are UL Listed, CSA Certified, and conform to European Directives. They come in standard 20-inch rolls that are easy to stock and carry to the jobsite. Emerson recommends that a floor temperature sensing thermostat be used to control the cable system.

For more information, visit
www.warmtiles.com



Warm Tiles SAM mats from Emerson come in standard sizes of pre-fabricated rectangular mats with self-adhesive, wide-spaced backing to help reduce installation time and labor

Cementex Highlights Combo Head Screwdriver
Unmatched efficiency, safety, and comfort for electrical device handling

Cementex, the safety tool specialist and only double-insulated tool supplier, highlights its Combo Head Screwdriver. This specialty tool is designed for maximum contact with the combination head screws predominantly found on electrical devices such as terminals, plugs, and sockets, making it an essential tool for electricians and electrical technicians working with these devices and fittings.

Cementex's Cushion Grip handle is designed for maximum comfort during long days in the field. Its cushioned handle provides unparalleled grip and maximum torque power. The Combo Head screwdriver is made with a Cementex Composite self-insulating shaft, eliminating 95% of conductive material from the tool and thereby maximizing safety.

Cementex prides itself on continuous innovation in developing technologies that maximize durability, usability, and safety. Cementex is setting the standard for unparalleled safety with products designed specifically for trained professionals working around energized equipment. Plus, these innovations result in products that are lighter and more efficient for people working in the field.

Cementex has been a leader in the safety tools space long before government regulations required certain safety certifications. With the Combo Head screwdriver, customers know they're getting a tool that can tackle a variety of jobs, offering unmatched efficiency without compromising on safety.

All Cementex tools comply with ASTM F1505 and IEC 60900 standards and help meet requirements of OSHA 1910.331-335, NFPA 70E0, and CSA-Z462.

For more information, visit
www.cementexusa.com



CHT2-4-CG
Combo Head
PN _____ DESC _____
CHT2-4-CG.... CH #2 X 4"

RANDL
INDUSTRIES, INC.

Install Peace of Mind!

First there was 4 square...
and now the **REVOLUTIONARY 5 Square® Box!!**

You've struggled with 4 Square boxes for years - you know how small, cramped and time consuming they are. Finally, there is a solution that allows you the space you have always needed.

The **5 Square®** Boxes (5" x 5" x 2-7/8") provide up to 88 in³ of interior volume which more than doubles that of most existing boxes on the market.

Create a robust and unrivaled infrastructure for the life of your facility with the **5 Square®** Products!

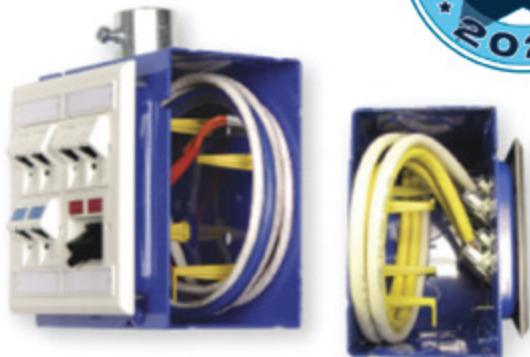


Fire Signal



- TWICE THE VOLUME AS MOST BOXES
- SAVE LABOR...INCREASE PROFITS
- ELIMINATES TROUBLESHOOTING TIME AND COST
- FULLY UPGRADEABLE SYSTEM
- SPECIFIED BY ENGINEERING FIRMS, HOSPITALS, UNIVERSITIES & GOVERNMENT AGENCIES
- AVAILABLE IN ZINC OR RED

Telecommunications



- INTEGRAL CABLE MANAGEMENT
- SAVE LABOR...INCREASE PROFITS
- FACILITATES MIN. BEND RADIUS REQUIREMENTS
- SUPPORTS CURRENT AND EVOLVING SYSTEMS
- SUPPORTS PoE PLUS
- SPECIFIED BY ENGINEERING FIRMS, HOSPITALS, UNIVERSITIES & GOVERNMENT AGENCIES

RANDL
INDUSTRIES, INC.

P: 509.340.0050 • F: 509.340.0051
See our line of telecom & fire signal boxes at: www.RANDL-INC.com
Making Communications & Fire Protection More Reliable & Cost-Effective!



SP PRODUCTS, INC.
Productivity and value thru ideas
FOR SAFER BETTER FASTER JOBS

2022 NECA
ShowStopper
WINNER

Transition Couplings PVC Bell End Adapter Galvanized Rigid Conduit



NEW



UL US
PATENT
PENDING



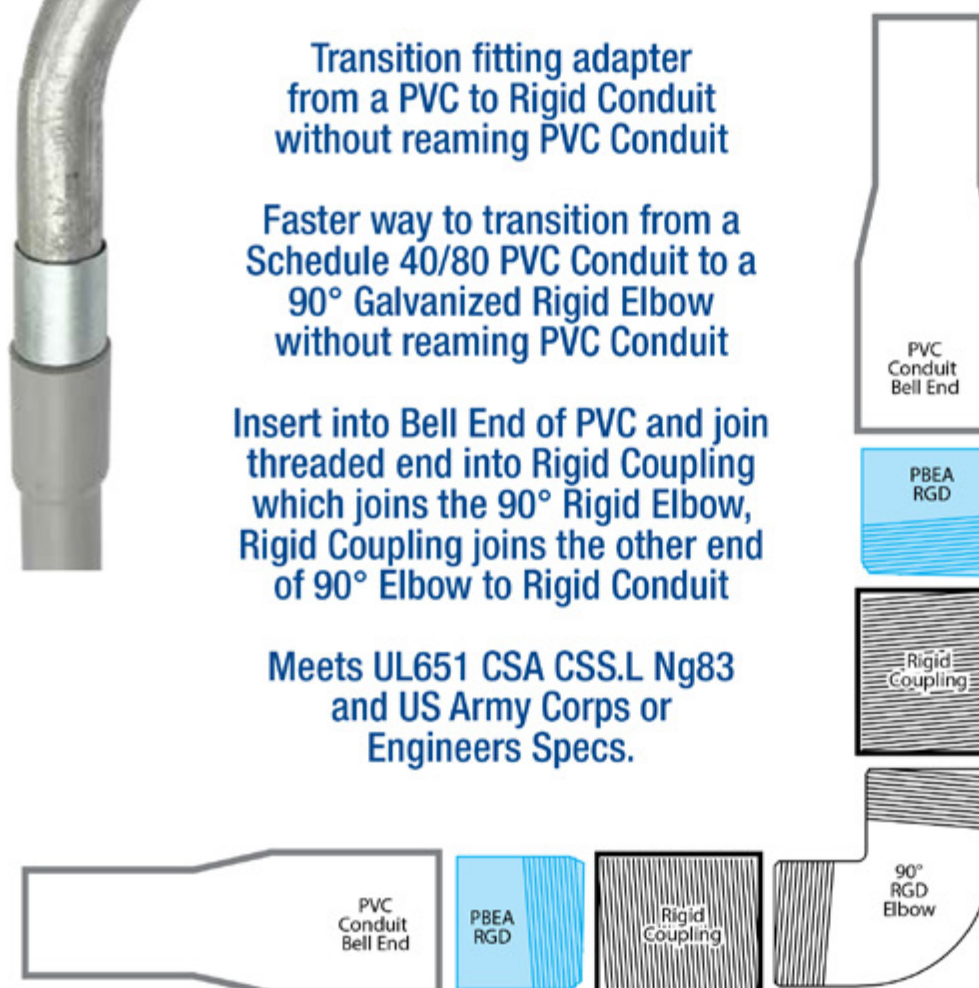
1/2" thru 6"

Transition fitting adapter
from a PVC to Rigid Conduit
without reaming PVC Conduit

Faster way to transition from a
Schedule 40/80 PVC Conduit to a
90° Galvanized Rigid Elbow
without reaming PVC Conduit

Insert into Bell End of PVC and join
threaded end into Rigid Coupling
which joins the 90° Rigid Elbow,
Rigid Coupling joins the other end
of 90° Elbow to Rigid Conduit

Meets UL651 CSA CSS.L Ng83
and US Army Corps or
Engineers Specs.



Transition Couplings

Size	Catalog #
1/2"	PBEA/RGD 50
3/4"	PBEA/RGD 75
1"	PBEA/RGD 100
1-1/4"	PBEA/RGD 125
1 1/2"	PBEA/RGD 150
2"	PBEA/RGD 200
2-1/2"	PBEA/RGD 250
3"	PBEA/RGD 300
3-1/2"	PBEA/RGD 350
4"	PBEA/RGD 400
5"	PBEA/RGD 500
6"	PBEA/RGD 600

Customer must satisfy all codes and owners' specifications.

SP PRODUCTS, INC.
Productivity and value thru ideas



**PATENT PENDING
PATENTED**



LABELS APPLY TO PRODUCTS ONLY WHERE SHOWN ABOVE

730 Pratt Boulevard • Elk Grove Village, IL 60007
P: (847) 593-8595 • F: (847) 593-8629 • Toll-free (800) 233-8595
E: info@spproducts.com • www.spproducts.com

IP13r

new
PRODUCTS

Klein Tools® Introduces Locknut Wrench Set for Easier Access to Tight Spaces

Klein Tools, for professionals since 1857, introduces the Locknut Wrench Set, designed with an exclusive offset bend that is perfect for tightening and loosening locknuts in tight spaces.

Locknut Wrench Set (Cat. No. 50900R)

- Set features opposing offset bends allowing for access to difficult to reach locknuts
- Three wrenches included for most used conduit sizes: 1/2-Inch, 3/4-Inch and 1-Inch
- Two internal magnets on each wrench hold the set together for easy storage
- The slim alloyed steel design allows for access when space is limited
- Each wrench is a different color and marked to easily identify size
- Hooked tip latches on locknut for ultimate turn leverage
- Steel design is corrosive resistant and durable



"Klein Tools' new Locknut Wrench Set is designed to make loosening and tightening locknuts in tight spaces much easier for trade professionals," says Tye Parker, product manager at Klein Tools. "The three-wrench set features the most used conduit sizes, all different colors and marked to easily identify, and have internal magnets to hold the set together for easy storage."

For more information, visit
www.kleintools.com



THE LAND OF PLENTY

Plenty of **OPTIONS**.
Plenty in **STOCK**.
Plenty of **IDEAS**
for all of your lighting
and design projects.



Innovation is LED
by TCP.

216.208.3339
TCPi.com



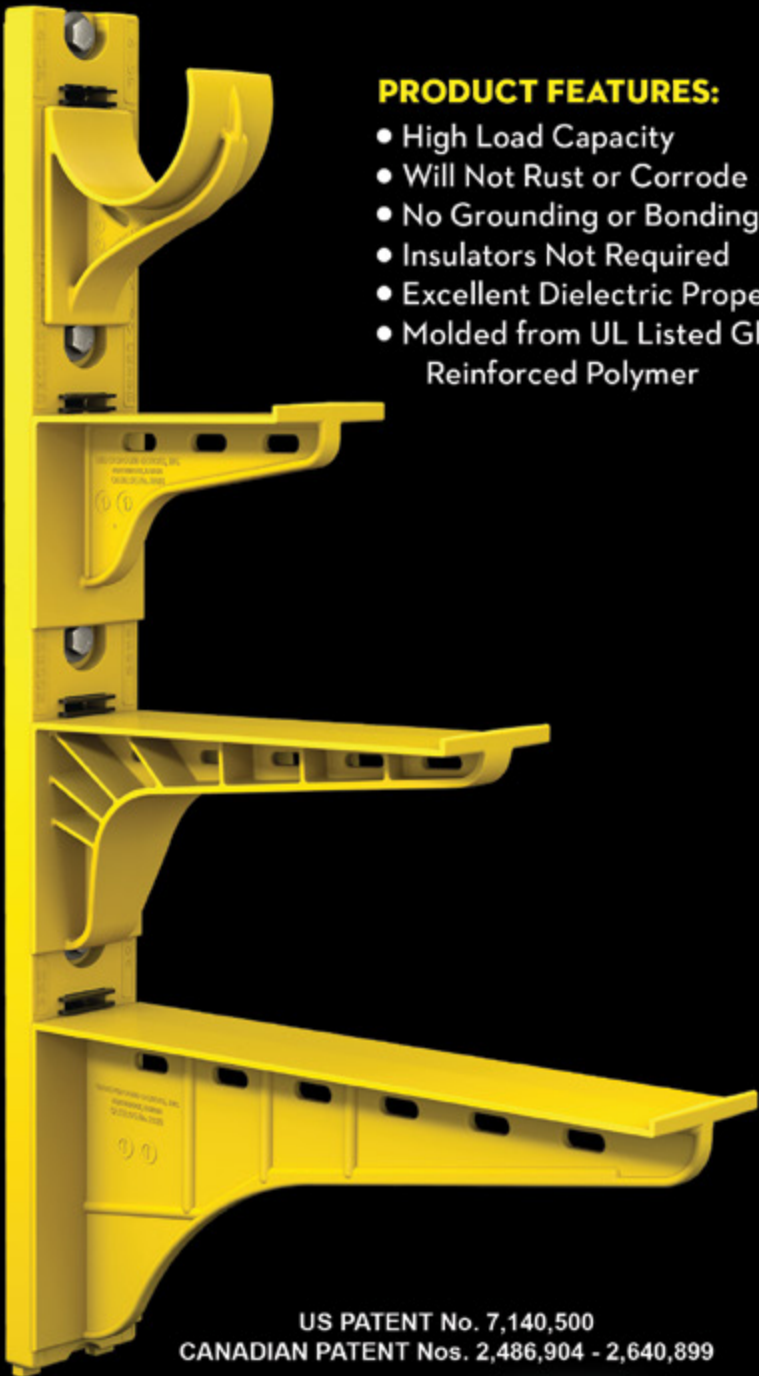
The Heavy Duty Nonmetallic CABLE RACK

For Power and Communications Manholes And Vaults



PRODUCT FEATURES:

- High Load Capacity
- Will Not Rust or Corrode
- No Grounding or Bonding
- Insulators Not Required
- Excellent Dielectric Properties
- Molded from UL Listed Glass Reinforced Polymer



US PATENT No. 7,140,500
CANADIAN PATENT Nos. 2,486,904 - 2,640,899



HDL Arm Lock shown with
RA04 Arm and CR36-B Stanchion



3HDS - 3" throat saddle shown with
a cable secured by cable ties.



RA08 - 8" arm shown with three
cables secured by cable ties.

UNDERGROUND DEVICES
INCORPORATED



420 ACADEMY DRIVE
NORTHBROOK, IL 60062
Phone: 847-205-9000 • Fax: 847-205-9004
Website: www.udevices.com

STRENGTHEN YOUR BUSINESS

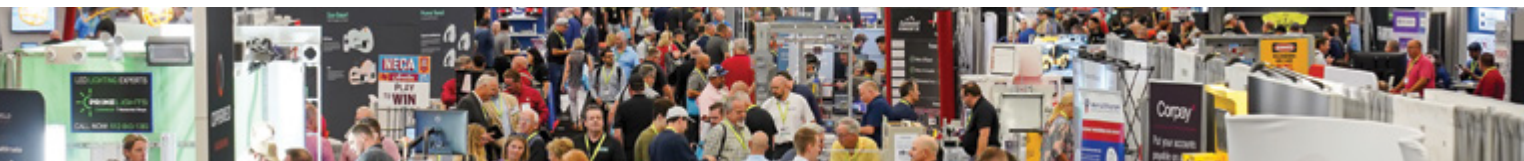


NECA 2023 PHILADELPHIA SEPTEMBER 29–OCTOBER 2, 2023

There are many opportunities to strengthen your electrical contracting business. Whether you're working on new construction, renovation, or retrofit projects, we have the education, products, and solutions you need to protect and improve your workforce and your bottom line now and for years to come.

THE NECA SHOW IS OPEN TO THE ENTIRE INDUSTRY.

Register today at necaconvention.org
Use code **23EPS for FREE Trade Show admission!**



For more information on attending **NECA 2023 Philadelphia**:
202.991.6318 meetings@necanet.org

Follow us on LinkedIn at: National Electrical Contractors Association or on Facebook and Twitter @necanet



Power Quality Analyzers & Loggers

CONNECT DIRECTLY TO AND SAFELY MONITOR UP TO 15KV

MODEL 15KVPSET VOLTAGE PROBES

THE MODEL 15KVPSET VOLTAGE PROBES ALLOW CONNECTING POWERSIGHT POWER ANALYZERS DIRECTLY TO 3-PHASE VOLTAGES UP TO 15 KILOVOLTS. NORMALLY, PROFESSIONALS WHO WISH TO MEASURE 12,470 VOLT LINES NEED TO LOCATE OR INSTALL A PT (POTENTIAL TRANSFORMER) IN ORDER TO MONITOR MEDIUM VOLTAGES. THE 15KVPSET ALLOWS DIRECT CONNECTION OF MEDIUM VOLTAGES TO POWERSIGHT ANALYZERS. SHOWN WITH OPTIONAL HOT STICKS, THE 15KVP HAS SHEPHERD HOOKS FOR HANGING ON BARE CABLE, TAPING OR BOLTING TO BUS BAR, OR ANY OTHER CONNECTION THAT IS NEEDED. THE 15KVPSET COMES DISASSEMBLED IN ITS OWN COMPACT CANVAS CARRYING CASE.

SCAN ME



The World's Only
Medium Voltage
Direct Connection
Solution for Portable
Power Analysis.



15 KVP Voltage Probe
(Single)

15KVPSet
(3 Probes, 9 Hot Sticks, Case)

BUY • RENT • TRADE IN

MONITOR ANY POWER SOURCE OR LOAD



VERIFYING BACKUP POWER
LOAD STUDIES
COST & ENERGY ANALYSIS
100V – 4160V MOTORS
POWER QUALITY
COMMISSIONING
HARMONIC DISTORTION
PREDICTIVE MAINTENANCE
DC POWER TESTING
400HZ MONITORING
AND MUCH MORE

COMPACT - CAPABLE - VERSATILE
POWER ANALYZERS

IT'S ALL WE DO.

SCAN ME



The World's Only
Medium Voltage
Direct Connection
Solution for Portable
Power Analysis.



Made in USA
with US &
Imported Parts

Products in Stock!



Most Orders Ship
in 1-2 Days!

PowerSight.com • sales@powersight.com • 1-925-444-7027

advertiser
INDEX

This advertiser index is compiled as a courtesy to our readers. While every effort is made to provide a complete and accurate listing of companies and page numbers, the publisher is not responsible for errors. **Click the company name or page number to see their advertisement.**

Company	PG#	Company	PG#
2023 NECA SHOW	30	RANDL INDUSTRIES	25
AIDA CORPORATION	1	RONK ELECTRICAL INDUSTRIES	23
AMERICAN CONDUIT	22	SOLAHD / EMERSON	17
APPLETON / EMERSON	13	SOLAHD / EMERSON	19
APPLETON / EMERSON	15	SP PRODUCTS INC	3
CONDUIT REPAIR SYSTEMS	4	SP PRODUCTS INC	11
iTOOLco	IFC	SP PRODUCTS INC	26, 27
iTOOLco	IBC	SP PRODUCTS INC	BC
KRENZ & COMPANY	32	TCP	28
MILLER SAFETY CONSULTANTS LTD	7	TIMCO INSTRUMENTS, LLC	20
MOBILE DESK	21	UNDERGROUND DEVICES	29
PHOENIX CONTACT USA	5	VOLTEC POWER & LIGHTING	16
POWERSIGHT / SUMMIT TECNOLOGY INC	31		

When it comes to transformer cooling fans, Krenz-Vent is the industry recognized gold standard. Our leadership position is earned through 80+ years of R&D plus our superior engineering and customer service. You can rest easy when you specify Krenz fans.

ENGINEERED TO COOL
There is no comparison.



KRENZ & COMPANY, INC.
KRENZVENT.COM • 262.255.2310 • KRENZ@KRENZVENT.COM

BONUS FEATURE

TO VISIT AN ADVERTISER'S WEBSITE, SIMPLY CLICK THE QR CODE OR COMPANY NAME IN THEIR AD.



Electrical Products & Solutions
The Engineering Source for Electrical Contractors
www.electricalps.com

CORDLESS CANNON 6K

iTOOLco.
WWW.iTOOLco.com | 865.670.3713

f i t y in

TOP PRODUCTS 2022
Electrical Products & Solutions

Speed, versatility, and performance are all yours with iTOOLco's Cordless Cannon 6K™. This portable 6,000 lb. puller is intuitively designed to handle all of your day-to-day wire pulls.

The built-in capstan switch automatically turns the puller on and off. Simply tug on the rope to start the pull and slack off the rope to shut it down. Delivers dynamic performance in remote locations or areas where power is not yet available.



SCAN ME



SPPRODUCTS, INC.

Productivity and value thru ideas
FOR SAFER BETTER FASTER JOBS



We're Proud to be the Electricians' Friend for Over 50 Years!

IP5

"The Original"

Enter Any KO on Both Sides of the Box



IP19/20

4-Conduit Block
PATENTED

IP21a

QwikBlock
PATENT PENDING

Use 4-Conduit Block (IP19 or IP20) with QwikBlock (IP21a)

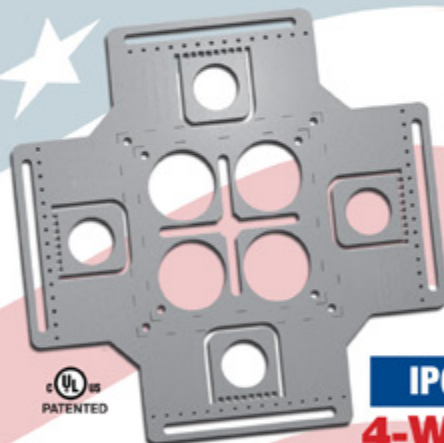
IP6d

2-Way

with Split Fingers for Horizontal or Vertical Installation



Our Family of Conduit & Box Support Plates Saves Valuable Time & Money!



IP6

4-Way

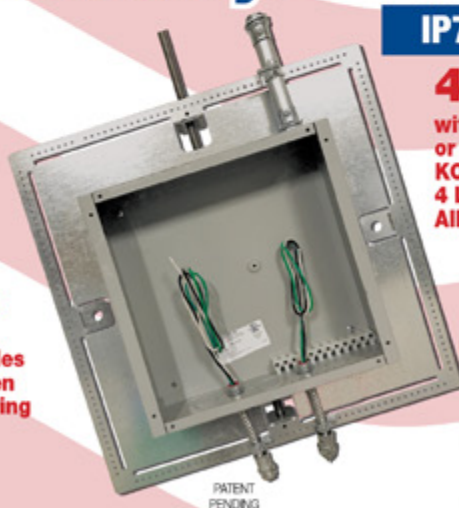
Enter Any KO on All 4 Sides of the Box Plus 4 Large Open KOs in Center Allows Entering Back of Box



IP6a

2-Way/Half

Enter Any KO on 1 or 2 Sides of the Box Plus Large Open KOs in Center Allows Entering Back of Box



IP7

4-Way

with Split Fingers for Horizontal or Vertical Installation. Enter Any KO on All 4 Sides of the Box Plus 4 Large Open KOs in Center Allows Entering Back of Box.

IP8

Mount Horizontally or Vertically from One Single Support

20 x 20

Supports up to 12 x 12 J-Box

28 x 28

Supports up to 20 x 20 J-Box

MADE IN THE USA!

Plus More Being Invented for **SAFER BETTER FASTER** Jobs . . . Call With Your Ideas!

SPProducts.com **800-233-8595** info@SPProducts.com