

NOVEMBER 2023

Electrical

Products & Solutions™

The Purchasing Guide for Electrical Contractors

www.epsmag.net



Automatic Transfer Switches:

*Ensuring Safety, Reliability,
and Minimal Downtime*



iTOOLco.

WWW.ITOOLco.com | 865.670.3713



In-Line Cordless Cable Cutter



Part # ILCCC1000

iTOOLco's in-line Cordless Cable Cutter features 1000 MCM Cu/Al jaws that deliver rapid, installation-ready cuts in seconds. This open jaw in-line cutter is equally balanced, allowing you to cut effortlessly even in the tightest spots. Featuring a LED light ring for precise visual placement of your cut, this compact tool cuts through 1000 MCM copper and aluminum at least 2 times faster than other cutters. Not rated for ACSR.

www.iTOOLco.com

865-670-3713

"When Disasters Strike, First Responders Rely On Us!"

Our complete control, communication and convenience Utility Truck Console is becoming the new standard for truck fleets of all sizes. Loaded with standard and optional features that maximize ergonomics, productivity, and fleet/telecom standards into a one exceptional Mobile Console Solution.



MOBILE DESK
MOBILE OFFICE SOLUTIONS

1-877-663-3375

www.mobiledesk.com

Copyright © 2022 Mobile Desk, LLC All Rights Reserved.



COMPANY PROFILE

6 Protect Yourself
Miller Safety Consultants —
A Leader in Arc Flash Protection

COVER STORY

8 Automatic Transfer Switches:
Ensuring Safety, Reliability, and Minimal Downtime

DEPARTMENTS

- 14** INDUSTRY NEWS
- 20** NEW PRODUCTS
- 32** AD INDEX

ON THE COVER

Photo courtesy of Russelectric



Electrical
Products & Solutions™
The Purchasing Guide for Electrical Contractors www.epsmag.net

PUBLISHER
Danny J. Salchert

OFFICE MANAGER
Anita Salchert

CREATIVE DIRECTOR
Derek Gaylard

CIRCULATION DIRECTOR
Pam Fulmer



PRESIDENT
Danny J. Salchert

**EXECUTIVE AND
ADVERTISING OFFICES**
2009 Eagle Ridge Drive
Birmingham, AL 35242
phone: 205.981.4541
www.epsmag.net
danny@epsmag.net

Electrical Products & Solutions™ is published twelve times a year on a monthly basis by ABD Communications, Inc., 3591 Cahaba Beach Road, Birmingham, Alabama, 35242, USA. *Electrical Products & Solutions™* is distributed free to qualified subscribers. Non-qualified subscription rates are \$57.00 per year in the U.S. and Canada and \$84.00 per year for foreign subscribers (surface mail). U.S. Postage paid at Birmingham, Alabama and additional mailing offices. *Electrical Products & Solutions™* is distributed to qualified readers in the electrical contracting industry. Publisher is not liable for all content (including editorial and illustrations provided by advertisers) of advertisements published and does not accept responsibility for any claims made against the publisher. It is the advertiser's or agency's responsibility to obtain appropriate releases on any item or individuals pictured in an advertisement. Reproduction of this magazine in whole or in part is prohibited without prior written permission from the publisher.

POSTMASTER: Send address changes to
ABD Communications, Inc., P.O. Box 382885
Birmingham, Alabama 35238-2885

FOLLOW US ON



SP PRODUCTS, INC.
Productivity and value thru ideas
FOR SAFER BETTER FASTER JOBS



We're Proud to be the Electricians' Friend for Over 50 Years!

Qwik Duct
Safer Better Faster

HDPE CUSTOM TEMPLATES
In Any Configuration Required

**Save on
Installation!**



IP1



Assemble Conduit Above Trench-
No Workers Below -
Prevents Injuries and Deaths.
Also Allows Digging a Narrower Trench
for Less: Excavation, Concrete, Slurry,
Backfill & Shoring.

IP3b

Patent
Pending



PVC Offset

Sizes 1/2" thru 6"
Meets Flexible Mandrel
Test Requirements

Bore Spacers

Sizes 1/2" thru 6"
Roll assembled conduit into
caissons and under
obstructions

IP2



IP13A-F

Conduit Transition Couplings



IP15

**End Bell
Adapter**
Schedule
40/80 PVC



Save Cost on the Rigid Nipple, Tape & Labor
Use for Entire Job - Not Just for Repair

IP14a

**1 Piece
Reaming Bit**
1/2" thru 6"
Schedule 40/80

Plus More Being Invented for SAFER BETTER FASTER Jobs . . . Call With Your Ideas!



SPProducts.com 800-233-8595 info@SPProducts.com

REPAIR CONDUIT IN A SNAP!

No Tape • No Plastic Straps • No Metallic Straps

NO KIDDING!

*Designed especially for power, communications
and fiber optics.*



STEP 1
Remove damaged
conduit



STEP 2
Cut split duct
conduit to fit



STEP 3
Snap in
place

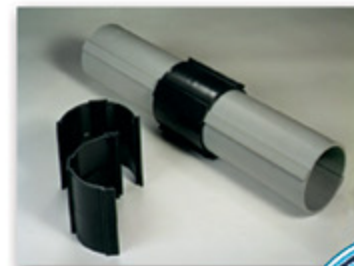
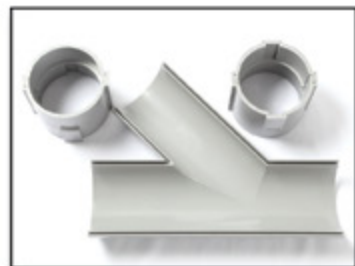
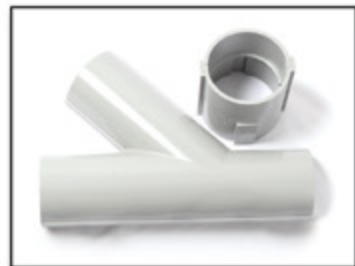


STEP 4
Attach
adapters



STEP 5
Finish job in
record time

"The World Leader In Split Conduit Products"

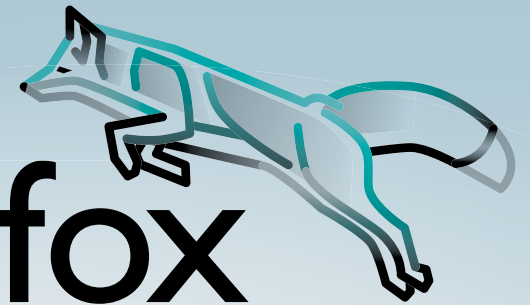


Conduit Repair Systems, Inc.
The World Leader In Split Conduit Products



800.670.1804 • 435.673.8724 fax • crs@conduitrepair.com • www.conduitrepair.com

THE
TOOL fox



TOOLS you can TRUST

Partner with the **TOOL fox** to take advantage of these benefits:

- Robust, durable, and ergonomic industrial wire-processing hand tools
- Cut, strip, and crimp with consistent high-caliber results
- UL Listed when used with Phoenix Contact's quality ferrules
- Backed by a dedicated sales team and technical service
- Covered by a limited lifetime warranty

For more information and videos, please visit
www.phoenixcontact.com/us-TOOLfox.



© PHOENIX CONTACT 2023

Protect Yourself

Miller Safety Consultants — A Leader in Arc Flash Protection

Vince Miller started Miller Safety Consultants, a veteran owned business in 1999. The goal of the business was to provide cost effective safety consulting, employee training such as: confined space entry, fall protection, electrical safety and provide sales of electrical shock and flash protective equipment and fall protection equipment to businesses in the Washington DC area.

Reliance Industries provided fall protection products and much of the sales and training was on behalf of the supplier. In 2000, the owner decided to retire from his business, and Vince decided to discontinue the fall protection line of his business and concentrate more in the electrical training and products.

Vince had been a distributor for Certified Insulated Products (CIP), a manufacturer of electrical insulated tools and electrical arc flash clothing manufactured by Otex in Rochester, New York. As a distributor, Vince provided sales through his internet website and much through relationships with electrical contractors. His training was a classroom environment and was provided directly to customers but he also taught as a sub-contractor for other safety consulting companies and the

Chesapeake Safety Council in Baltimore, Maryland. In 2005, Vince partnered with Vivid Learning Systems in Cascades, Washington to provide on-line training in safe work practices.

Training in electrical safe work practices is still provided locally in the Washington DC area and as a partner with an electrical engineering firm and online. The training is based on the Occupational Health and Safety Administration (OSHA) standards and the National Fire Protection Association (NFPA) 70E standard.

Miller Safety Consultants is now a distributor for Cementex USA, Burlington, New Jersey, for insulated tools and equipment and clothing from OTEX Protective, Rochester, New York.

The majority of his sales of products

are from the web-based store. Cementex is nationally known for their quality equipment. Otex Protective is becoming more known for their quality clothing. For years, they have manufactured their products under other provider labels. Vince chose to not create his clothing line, but to sell the manufacturer product.

Vince has worked with many electrical company employees to fine-tune the clothing to be more comfortable for the user. Working closely with the manufacturer, they have made slight changes in how the cloth pattern was modified to meet final production. An example is the lightweight 40 Calorie vented hood offered by Otex.

The material is of the latest technology. The vented assembly is constructed for balance on the back of the hardhat and the airflow is 27 CFM to prevent fogging of the face shield and provide cooling to the worker. It took over a year to develop the product with the user prior to having the hood "flash tested". This product is now standard issue with many electrical contractors.

Being a small business and having quality providers has resulted in satisfied customers for Miller Safety Consultants. Being a direct supplier for OTEX Protective, another small business means customized customer needs can be met. □

For more information, visit
Miller Safety Consultants at:
www.electricalsafetyproducts.com, email
Vince at: sales@millersafetyltd.com.

AUTHORIZED
Cementex
The Safety Tool Specialists
DISTRIBUTOR

Give Vince a call at
(703) 367-0404



Deluxe Maintenance Tool Kit



Class O Glove Kit

Protect yourself from "Arc Flash"

ARC FLASH LIFT-FRONT HOOD WITH V¹² HIGH-VOLUME VENTILATOR
Compact. Powerful. Reliable

Our V¹² High-Volume Ventilator boasts an unexpectedly quiet, high output (35+ CFM) turbine fan to cool and circulate the ambient air within the hood. Fully protected beneath it's durable ABS shell and added fabric layering, the V¹² High-Volume Ventilator isn't just compliant, it's superior.



40 CAL/CM2 ULTRALIGHT CLOTHING BY OTEX

Our new dual-layer Ultralight clothing takes advantage of DuPont's® dedication to scientific advancement and Westex's® industry leading dependability. Weighing in 37% lighter than traditional HRC4 PPE, our Ultralight Clothing is the most innovative contender in the lightweight arena.

HYBRID LAYERING

Combined Fabric Weight: 14 oz

Outer Layer: DuPont® Protera
Color: Navy

Inner Layer: Westex Ultrasoft
Color: Safety Orange



CALL US TODAY
(703) 367-0404
OR VISIT OUR ONLINE ELECTRICAL SAFETY EQUIPMENT STORE
www.electricalsafetyproducts.com

Automatic Transfer Switches:

Ensuring Safety, Reliability, and Minimal Downtime

WHAT IS AN AUTOMATIC TRANSFER SWITCH?

An Automatic Transfer Switch (ATS) is a means of transferring power between a primary electrical power source and an alternative source, such as a generator, in the case of power failure. Automatic Transfer Switches are critical for the smooth, consistent operation of facilities like hospitals and factories that require near-constant uptime.

While Manual Transfer Switches require an operator and pose a variety of safety and time management concerns, Automatic Transfer Switches can sense critical shifts in electrical power, such as the loss of the power source or when voltage frequency varies from a preset limit, and automatically transfer power from the alternate source. Additionally, Automatic Transfer Switches can detect when power is restored in the primary source and retransfer the load back.

What does it take to make them safe?

Tried and true design and construction, in combination with a quality manual transfer system, is crucial to ensure the safety, reliability, and minimal downtime of an Automatic Transfer Switch. This article will focus on Open-Transition Transfer Switches, where the switch breaks connection with one power source before making connection with another (also known as “break-before-make” design).

One notable benefit for Open-Transition Transfer Switches over

Closed-Transition Power Sources is the potential for External Manual Operators (EMOs), which are only available with the former. The EMO provides unparalleled ease of operation and safety measures not available in Closed-Transition Transfer Switches. EMOs allow you to transfer switches safely if automatic transfer is not available, such as during a technological malfunction or controller failure, minimizing arc flare concerns.

Design and Construction of Switching Mechanism

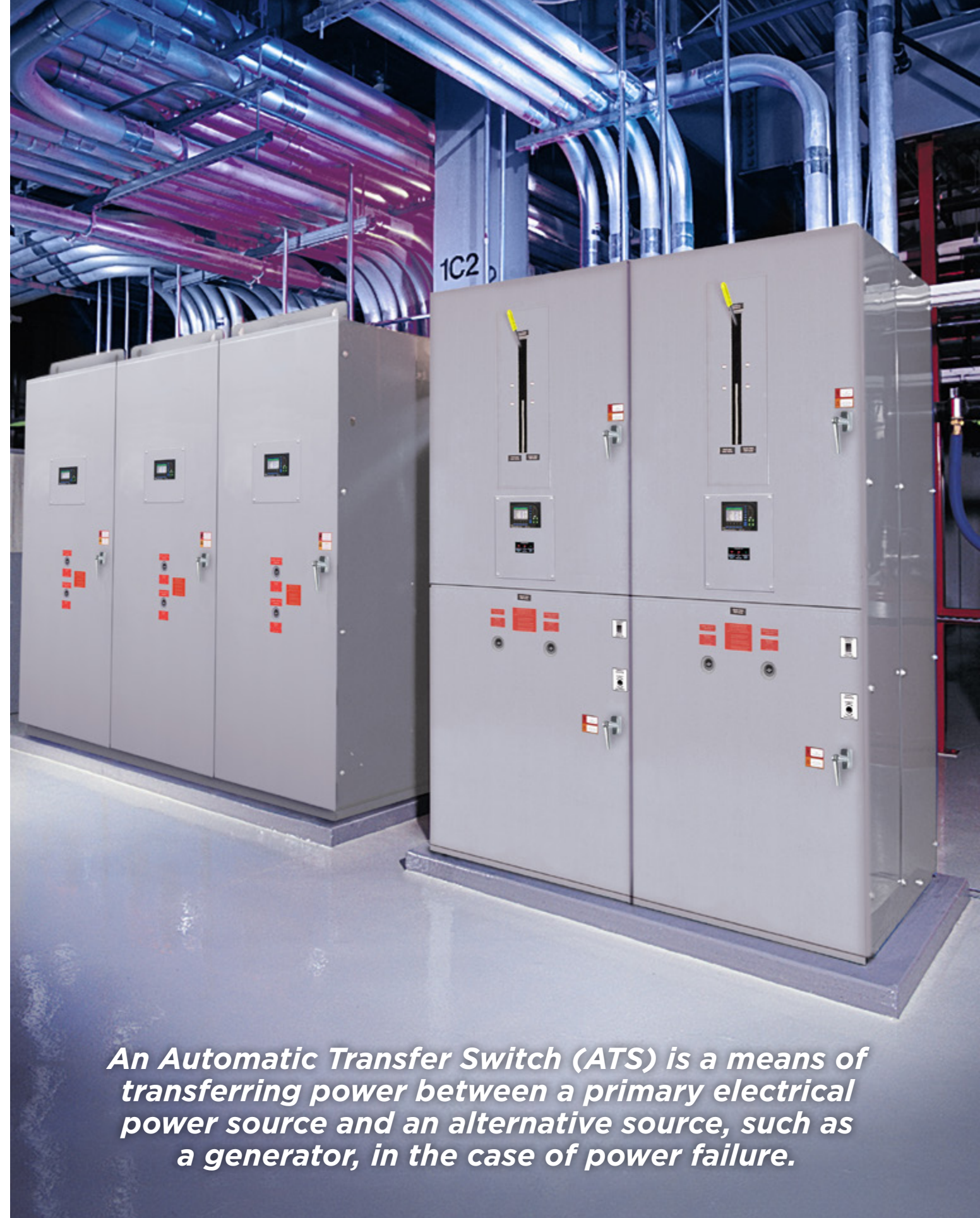
For the safest and most consistently reliable manual transfer, three general requirements must be met: a fast transfer of power, protection against the danger of arc flashes, and protection against contact erosions. High quality materials and segmented ATS contact designs are an investment in durability and reliability and will ensure your switching mechanisms withstand the test of time. Russelectric prides itself in providing superior designs and meticulously crafted switches paired with state-of-the-art technology.

Fast Transfer of Power

As with any technological component, there are occasional automatic circuitry or programming failures. In this case, a manual transfer of power is necessary, and an expedient one will ensure limited downtime in the facility the transfer switch is servicing.

With some ATS designs cabinet doors must be opened to perform manual transfers of the switch. Some even have a disable switch inside the enclosure which must be accessed to disconnect the automatic controls. Recent safety requirements say that the ATS is to be disconnected from the two power sources in order for manual transfers to be performed safely. This adds more time to the transfer process and requires additional training to ensure the safety of operators throughout. Russelectric open transfer switches are equipped with EMO (external manual operator) capability, and a special crank which allows you to operate the switch through the cabinet door. This effectively eliminates the need to open the cabinet door to perform a manual transfer thereby cutting down on steps to the transfer of power and ensuring speed in these crucial moments.

Without the ability to operate the switch through the cabinet door, exposure to components inside the cabinet is necessary. If an optimal ATS design is not chosen, a safe transfer process can become time consuming, especially considering that many transfer switches are fed



An Automatic Transfer Switch (ATS) is a means of transferring power between a primary electrical power source and an alternative source, such as a generator, in the case of power failure.

by switchboards and other feeder equipment, increasing the possibility for user error and possibly arc flash injury.

Protection Against Arc Flashes

Arc flash safety procedures require the cabinet door to stay closed. Not only do External Manual Operators ensure this safety measure is met, but materials differences can further cut down on potential for Arc Flash danger.

Many transfer switches use electromagnetic solenoids that are directly linked to switching contacts. If an operator sticks a transfer handle

into a solenoid, the contacts open and close at speed of the operator's hand motions. The slower the motion, the higher the arc flash danger. Russelectric utilizes unidirectional linear motors that power a gear box, which in turn drives an over-center mechanism that operates similarly to a mouse trap. The opening and closing speed of the contact does not change depending on operator motion. Such a unique design affords you an additional layer of safety, offering consistent speed and pressure for the opening and closing of the contacts.

Protection Against Contact Erosions

During an open-transition transfer, the Russelectric contact mechanism is securely locked in position until an over-center position is reached. At this point, preloaded springs instantaneously

open the closed contacts (quick-break) and close the open contacts (quick-make) with only a momentary break in between. This quick-break design, when paired with rapid arc quenching features, provides for the most effective rapid arc interruption under maximum voltage and amperage, which reduces contact erosion and overheating to extend useful life. Russelectric transfer switches, for example, have some of the highest 480 VAC 3-cycle closing and withstand ratings of any switches available today. Russelectric has had transfer switches in the field for over fifty years, with no signs of degradation.

The Materials Difference

Russelectric's switching contacts are machined (not cast, forged, or stamped) from solid extruded copper, with tungsten arcing tips. The switch's mechanical linkages are crafted from sturdy anodized steel rods machined, not stamped or riveted, with aircraft-style ball joint fitting. Bus bars are made from solid copper, and silver plated. Additionally, the enclosure seams are arc-welded for extra bracing and smooth, ground corners. Holistically sturdy and tested design ensures smooth, safe function.

The tried-and-true design functions of Russelectric's transfer switches are combined with cutting-edge technology, featuring a microprocessor that offers comprehensive control of the switch. The microprocessor can be incorporated into building management systems, a central office display, or can be web-enabled, making it fully integrable to existing processes. The display features clear visual cues, highlighting the display in green when it's connected to primary power, displaying yellow when the switch is in transition, and red when the switch is connected to the alternate power source. These clear signifiers can eliminate complicated diagnostic procedures and allow operators to act quickly in the event of a power emergency.

External Manual Operators, a summary

An EMO provides a simple means for manual operation capability. EMOs are necessary when the Automatic Transfer



RTS-03 is a 3 cycle rated, Dual Operation, Open Transition Transfer Switch.



Power Quality Analyzers & Loggers

CONNECT DIRECTLY TO AND SAFELY MONITOR UP TO 15KV

MODEL 15KVPSET VOLTAGE PROBES

THE MODEL 15KVPSET VOLTAGE PROBES ALLOW CONNECTING POWERSIGHT POWER ANALYZERS DIRECTLY TO 3-PHASE VOLTAGES UP TO 15 KILOVOLTS. NORMALLY, PROFESSIONALS WHO WISH TO MEASURE 12,470 VOLT LINES NEED TO LOCATE OR INSTALL A PT (POTENTIAL TRANSFORMER) IN ORDER TO MONITOR MEDIUM VOLTAGES. THE 15KVPSET ALLOWS DIRECT CONNECTION OF MEDIUM VOLTAGES TO POWERSIGHT ANALYZERS. SHOWN WITH OPTIONAL HOT STICKS, THE 15KVP HAS SHEPHERD HOOKS FOR HANGING ON BARE CABLE, TAPING

OR BOLTING TO BUS BAR, OR ANY OTHER CONNECTION THAT IS NEEDED. THE 15KVPSET COMES DISASSEMBLED IN ITS OWN COMPACT CANVAS CARRYING CASE.

SCAN ME



The World's Only Medium Voltage Direct Connection Solution for Portable Power Analysis.



15 KVP Voltage Probe (Single)

15KVPSet (3 Probes, 9 Hot Sticks, Case)

BUY • RENT • TRADE IN

MONITOR ANY POWER SOURCE OR LOAD



VERIFYING BACKUP POWER
LOAD STUDIES
COST & ENERGY ANALYSIS
100V – 4160V MOTORS
POWER QUALITY
COMMISSIONING
HARMONIC DISTORTION
PREDICTIVE MAINTENANCE
DC POWER TESTING
400HZ MONITORING
AND MUCH MORE

COMPACT - CAPABLE - VERSATILE POWER ANALYZERS

IT'S ALL WE DO.

SCAN ME



The World's Only Medium Voltage Direct Connection Solution for Portable Power Analysis.



Made in USA
with US & Imported Parts

Products in Stock!



Most Orders Ship
in 1-2 Days!

PowerSight.com • sales@powersight.com • 1-925-444-7027



RTSCD Commercial Duty Transfer Switches
Russelectric® RTSCD Automatic Transfer Switches utilize ultra modern designs and deliver Russelectric’s reputation for reliability and ease of operation.

System fails, or when completing ATS inspections. As noted above, external operation ensures the enclosure door remains closed. This means safer operation and protection from arc flash injury, no need for additional safety protocols and training, and less downtime in facilities.

Russelectric EMO

The Russelectric EMO utilizes the same Russelectric transfer mechanism

as the automatic electrical operator. The instantaneous engagement of the open-center position mechanism ensures fast switching regardless of the speed and force of the action of the human operator. This feature enables manual transfers of power to be fast, easy (without special, additional procedures), safe, and consistent.

Conclusion

Automatic Transfer Systems are

critically important components of facility infrastructure. Under normal operation, they are fast, safe, and reliable means of keeping facilities running smoothly. When designed and built with quality in mind, they are robust and resilient to corrosion. Safety and operational features such as the Russelectric EMO offer an additional layer of reliability for fast, easy, and safe manual operation when necessary. □

ABOUT RUSSELECTRIC

Founded in 1955, Russelectric®, A Siemens Business, provides high-integrity power control solutions for mission critical applications in the healthcare, information technology, telecommunication, water treatment, and renewable energy markets. The company maintains vertically-integrated manufacturing facilities in Massachusetts and Oklahoma, where it designs and builds a full line of automatic transfer switches, switchgear, and controls. Russelectric products carry the longest and most comprehensive warranty in the industry, and are backed by a team of expert factory-direct field service engineers. To learn more about Russelectric products and the company's commitment to customer satisfaction, visit www.russelectric.com, call (781) 749-6000, or email info@russelectric.com.



Extend Luminaire Life While Reducing Energy Consumption

The Appleton™ Mercmaster™ Connect LED by Emerson is designed to illuminate hazardous and harsh industrial locations with integrated motion and illuminance sensors. Paired with Emerson’s Plantweb Insight Connected Lighting Application, operators have access to lighting usage data and sustainability analytics.

The Mercmaster Connect LED provides facility managers with continuous monitoring of their LED lighting with real-time insights gained into sustainability goals, diagnostics and lumen levels from any remote location at dramatically lower costs as compared to wired alternatives, with faster installation time and minimal disruption to plant operations.

Learn more at: masteringled.com



Appleton™ Mercmaster™ Connect LED

APPLETON™

The Emerson logo is a trademark and a service mark of Emerson Electric Co. © 2021 Emerson Electric Co.



CONSIDER IT SOLVED™

Hy-Brid Lifts Announces Director of Sales for Southeast United States

Hy-Brid Lifts, an industry leader in aerial lift equipment, announces David Price as director of sales covering the southeast United States. Price's responsibilities include providing customer support as well as continuing the growth and channel development of the Hy-Brid Lifts line of low-level scissor lifts.

"I am excited to join this team and look forward to the opportunity to work with our customers. Coming from the rental industry, I understand the importance of quality equipment and customer service backed by a solid service department," said Price. "After touring the production facility and meeting the Hy-Brid Lifts family, it's no surprise that this company is continuing to grow, and I look forward to being a part of that growth."

Price brings 12 years of industry experience to his new role, largely derived from his time in the rental equipment industry with United Rentals, Blueline Rentals and Equipmentsshare. He spent a majority of his time in sales management with a strong emphasis on customer service and going above and beyond for every customer.

"The entire Hy-Brid Lifts team is excited to have David on board to serve the southeast United States. David has a wealth of sales and rental industry knowledge that will strengthen our ability to serve our customers," said Dave Wanta, Custom Equipment LLC vice president of sales. "David is a valuable addition to the team, and we look forward to the contributions that he will provide for our company's continued growth." □



Hy-Brid Lifts welcomes David Price as director of sales for the southeast United States.

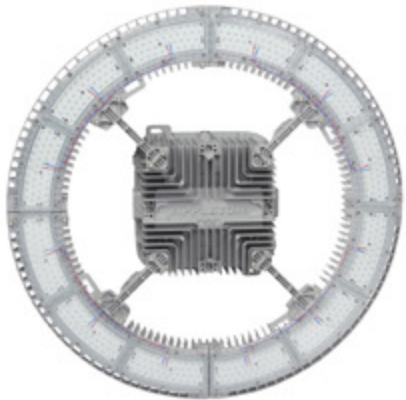
ABOUT HY-BRID LIFTS

Hy-Brid Lifts is a brand of Custom Equipment LLC. Hy-Brid Lifts engineers and manufactures all-purpose lifts in electric, self-propelled and push-around models. The low-level lifts offer exceptional capabilities in a heavy-duty but lightweight design, are easy to maneuver and reach working heights up to 25 feet. Contractors and maintenance technicians can use them from start to finish for a wide range of applications in industries as diverse as construction, drywall, electrical, HVAC, painting and plumbing, industrial manufacturing and facility maintenance. For more information: Hy-Brid Lifts, 2647 Highway 175, Richfield, Wis. 53076; 262-644-1300; fax 262-644-1320; sales@hybridlifts.com; www.hybridlifts.com; or Facebook; Twitter; LinkedIn; Instagram and YouTube.

HY-BRID LIFTS™
BY CUSTOM EQUIPMENT LLC



Lighting Your Way at Greater Heights



Appleton™ IHC LED Luminaire

The Appleton™ IHC LED Luminaire by Emerson is the ideal solution to deliver light from mounting heights of 50 to over 100 feet. With outputs up to 90,000 lumens, an IP66 marine and wet location rating, and an ambient temperature range of -40 °C (-40 °F) to 75 °C (167 °F), the IHC was designed to meet the demands of your harsh industrial environment and lighting requirements.

Learn more at: masteringled.com

APPLETON™

The Appleton logo is a trademark and a service mark of Emerson Electric Co. © 2021 Emerson Electric Co.

EMERSON

CONSIDER IT SOLVED™

Electri-Flex Announces Promotion in Purchasing

ELECTRI-FLEX COMPANY announces the promotion of Tony Ambrogio to the role of Director of Purchasing.

“Tony has been with Electri-Flex for nearly three years and has done an outstanding job taking over the purchasing of all our raw materials, MRO, and any other purchasing needs,”

stated Jan Ruthe, COO. “He continues to be an integral part of the business, and his logical and analytical thinking have become instrumental in our operations.”

Tony began his career at Electri-Flex as the Purchasing Manager in 2021. Prior to Electri-Flex, he had over nine years of purchasing experience,



with five of those years in electrical distribution.

To meet the Electri-Flex team, visit <https://www.electriflex.com/about/meet-the-team/>. □

ABOUT ELECTRI-FLEX COMPANY

Electri-Flex Company, a leader in electrical conduit design and manufacture for nearly 70 years, produces Liqueatite®, the most diverse line of liquidtight flexible electrical conduit in the industry. The company offers custom design, engineering, quality assurance, and testing capabilities. For more information on Electri-Flex Company, call (630) 529-2920 or (800) 323-6174; fax: (630) 529-0482; e-mail: mktg@electriflex.com; visit: www.electriflex.com; or write: 222 West Central Avenue, Roselle, IL, 60172-1994.



Barron Lighting Group Appoints Gaurav Arora as Exitronix Brand Manager

Barron Lighting Group is pleased to announce the appointment of Gaurav Arora as the new Exitronix Brand Manager. Gaurav brings a wealth of experience and knowledge to the role, having worked in the lighting industry for over 10 years.

In his new role, Gaurav will be responsible for organizing and facilitating the planning, production, marketing, and other tasks related to the creation and distribution of the Exitronix product family. This includes developing products through market research and combining those findings with general requirements, specifications, timetables, pricing and plans to complete development and marketing strategies.

“I am excited to join the Barron Lighting Group team and to take on the role of Exitronix Brand Manager,” said Gaurav. “I look forward to working with the team to develop and launch innovative products that will meet the needs of our customers.”

Barron Lighting Group Vice President of Sales and Operations, Heather McCune, said, “We are thrilled to have Gaurav join our team. His experience and knowledge of the lighting industry will be a great asset to our team and our customers. We look forward to seeing the great work he will do in this role.”

Gaurav brings a wealth of experience to the role, having worked in the lighting industry for over 10 years. He

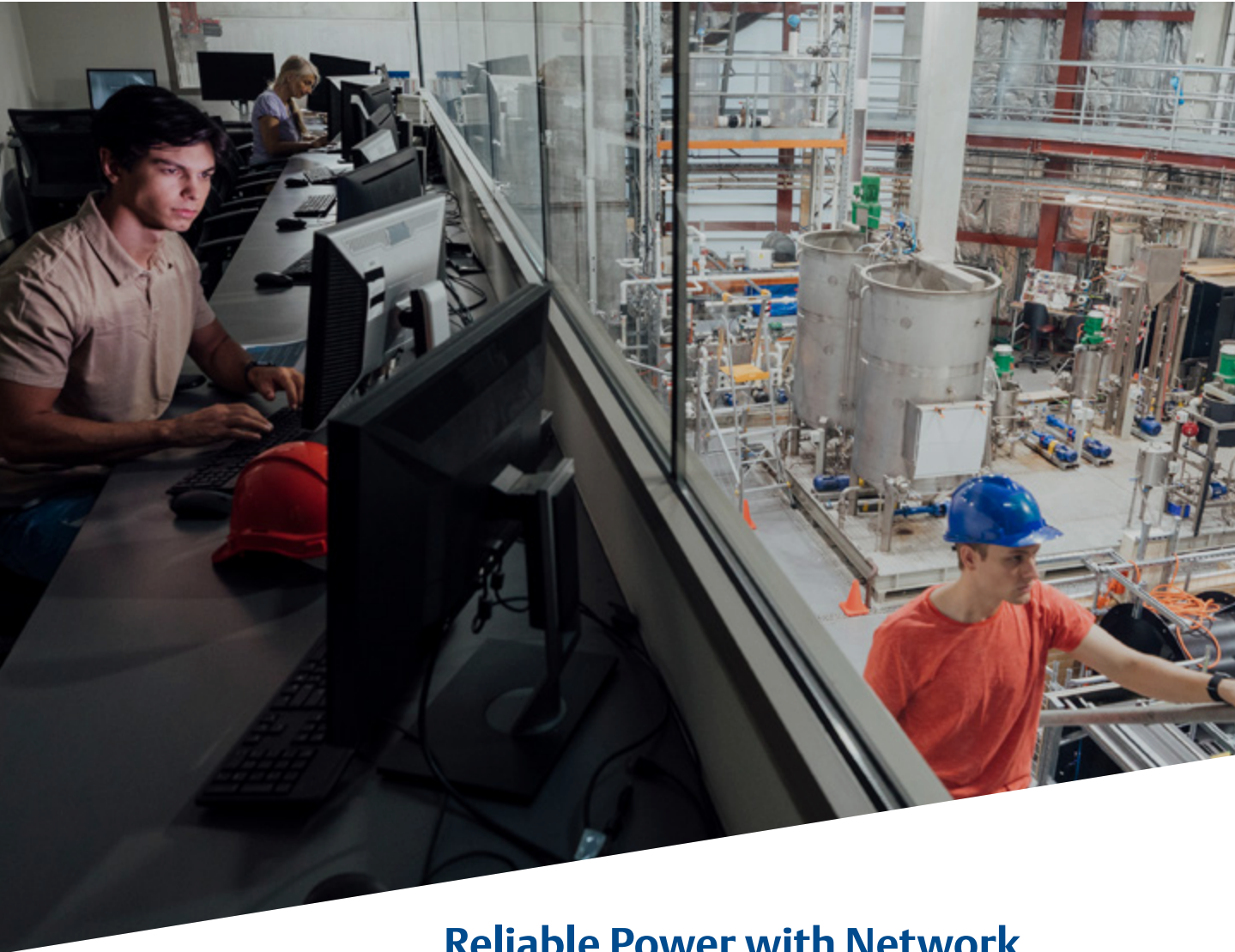


has held various positions in product management, marketing, sales, and operations and has a deep understanding of the industry.

Gaurav holds a Bachelor of Science in Mechanical Engineering from Indraprastha University and a Master of Business Administration from All India Management Association. □

ABOUT BARRON LIGHTING GROUP

Barron Lighting Group, based in Glendale, Arizona, has been a leader in the lighting industry for over 50-years. With four distinct brands under its umbrella - Exitronix emergency lighting, Trace-Lite commercial and industrial lighting, specialtyLED commercial and decorative lighting, and Growlite® indoor and greenhouse horticultural lighting - Barron offers comprehensive solutions to customers’ needs across a range of commercial and industrial applications. www.barronlgtg.com



Reliable Power with Network Communications



SolaHD™ Communication Module (SCM) and SDN-D High Performance DIN Rail Series Power Supplies

Power interruptions and failures can be detrimental to critical plant equipment or processes resulting in increased downtime, plant shutdowns, production loss, and risk of safety and environmental incidents. By integrating the SolaHD™ Communication Module (SCM) and SDN-D High Performance DIN Rail Series Power Supplies by Emerson into plant equipment and processes, operators and service technicians have the ability to monitor diagnostic data, alarms, and events, maintaining critical process availability.

Learn More at: www.solahd.com

SOLAHD™

The Emerson logo is a trademark and a service mark of Emerson Electric Co. © 2023 Emerson Electric Co.



CONSIDER IT SOLVED™

Legrand Announces Oliver Marketing as New Sales Agency for Residential Lighting Control and Shading Systems Products in Northern California and Northern Nevada

Oliver Marketing became the authorized representative for Legrand’s residential lighting controls and shading brands Vantage and Legrand Shading Systems in Northern California and Northern Nevada. Oliver Marketing’s years of experience and technical expertise in the residential lighting control and shading sector will poise them for success.

“We are confident that Oliver Marketing will continue to grow and expand our business in the residential building space,” said Andrea Lamieri, Senior VP and General Manager, Legrand Business Controls Systems division. “The Legrand team is excited to partner with Oliver Marketing to bring our complete residential control solution to the marketplace.”

Oliver Marketing has provided comprehensive marketing solutions to manufacturers and dealers in the western U.S. since 1986. The Oliver Marketing team is composed of accomplished industry veterans with collective experience across the consumer electronics spectrum. This wealth of expertise enables them to offer unparalleled sales and support, empowering the companies they represent with a wide range of skills and training. With the necessary background knowledge, technical expertise, talent, and market savvy, they manage and

drive significant market growth. Oliver Marketing will work with Legrand’s customers to create and plan events, build, and present training; assist in design and specifications; and offer local support for the partners and products they represent.

“We’re delighted to introduce Legrand’s luxury lighting control systems and shading products to our clients in Northern California and Northern Nevada. This collaboration aligns with our ongoing efforts to offer top-tier quality and innovation to our integrators,” stated Bob Oliver, President of Oliver Marketing. “With the familiar Vantage name and Legrand’s reputable products, this partnership will enrich and grow the home lighting and shading experiences that our integrators offer their clients.”

Vantage is a leader in luxury lighting control systems. The company’s sleek keypads and wall controls pair with Vantage’s LHUMAN human-centric lighting (HCL) solution to provide precise lighting control using color-tunable lighting fixtures and motorized window shading. The result enhances the aesthetics of any home while delivering natural light to improve the occupant experience. LHUMAN enables the widest selection of tunable fixtures to be used in a lighting system, and with LHUMAN KolorTune™ provides the

tunable, controllable profiles needed to create lighting scenes with precise color temperature, from fixture to fixture, for the task at hand — from productivity to relaxation or to replicate natural lighting indoors. The company partners with leading light fixture manufacturers as part of its lighting fixture alliance. Introduced in 2021, the alliance provides AV installers, interior designers, architects, and other home design professionals with color-tunable fixtures to fit any project need and seamlessly integrate with Vantage’s LHUMAN HCL.

Legrand Shading Systems offers an industry-leading manual and automated shading product lineup. Its automated roller shades are the only option on the market with a patented manual override control in the event of a power outage or misplaced controller. Its battery-powered shades come with alkaline batteries that are hidden inside and are ready to program with a simple tug. Legrand’s battery and wired motorized products are available in the narrowest sizes on the market — as small as 15.5 inches wide — and can be made in sizes up to 13 feet wide by 15 feet tall in select fabric options. The diverse fabric lineup offers over 100 collections, more than 750 fabrics, and is available in several colors from top manufacturers. □

ABOUT LEGRAND AND LEGRAND, NORTH AND CENTRAL AMERICA

Legrand is the global specialist in electrical and digital building infrastructures. Its comprehensive offering of solutions for commercial, industrial, and residential markets makes it a benchmark for customers worldwide. The Group harnesses technological and societal trends with lasting impacts on buildings with the purpose of improving lives by transforming the spaces where people live, work, and meet with electrical, digital infrastructures and connected solutions that are simple, innovative, and sustainable. Drawing on an approach that involves all teams and stakeholders, Legrand is pursuing its strategy of profitable and responsible growth driven by acquisitions and innovation, with a steady flow of new offerings—including products with enhanced value in use (faster expanding segments: data centers, connected offerings and energy efficiency programs). Legrand reported sales of €8.0 billion in 2022. The company is listed on Euronext Paris and is notably a component stock of the CAC 40 and CAC 40 ESG indexes. (code ISIN FR0010307819). www.legrand.us



Compact and Easy to Install DC UPS for Harsh Industrial Locations



SolaHD™ SDU DC - B Series DIN Rail UPS

The SolaHD™ SDU DC - B Series DIN Rail UPS by Emerson are perfect for mitigating power quality issues, minimizing loss of data and downtime.

The SDU DC - B UPS combines an industry leading compact design, wide operation temperature range -15 °C to +50 °C (+5 °F to +122 °F), enhanced communication and unique installation options to solve common application problems.

Learn more at: www.solahd.com

SOLAHD™

The Emerson logo is a trademark and a service mark of Emerson Electric Co. © 2021 Emerson Electric Co.



CONSIDER IT SOLVED™

Emerson Launches Exit and Emergency Lighting Systems

Appleton HEX LED Series lighting ensures safe evacuation during industrial emergencies

Emerson announced recently the Appleton™ HEX LED Series of egress lighting comprised of a selection of exit and emergency exit signs, exit sign/emergency lighting combination systems, and lamps-only emergency lighting systems, with emergency models featuring 90-minute battery backup as required by OSHA, NFPA, and the NEC. During an evacuation, the rugged lighting systems deliver lifesaving illumination in hostile industrial environments, such as oil refineries, Liquid Natural Gas (LNG) plants, chemical processing areas, and water and wastewater treatment facilities, enabling employees to escape safely from danger.

Every detail of the Appleton HEX LED Series emphasizes dependability. In addition to their ability to withstand exposure to corrosive elements, high vibration, heavy impact, and wide temperature ranges, the systems are rated for safe usage in NEC Class I, Div. 2 (C1D2) hazardous locations where flammable gases and vapors may be present. Fiberglass-reinforced polycarbonate housings, UV-stabilized polycarbonate lenses, stainless steel hardware, 6kV surge protection, and die-cast aluminum mounting brackets ensure industrial-grade reliability for long-term value. While standard versions of the Appleton HEX Series are operational in weather conditions from 32° to +122° F, customers can choose cold temperature models equipped with an internal heater and a battery blanket, resulting in an ambient temperature range of -4° to +122° F.


Electrical power is often lost during an industrial emergency, leaving employees in total darkness. Two ultra-bright LED adjustable lamp heads in Appleton HEX LED Series emergency lighting systems can safely illuminate a 45-foot center-to-center space to light the way for employees toward safety. The emergency systems' 6V DC or 12V DC rechargeable nickel-cadmium batteries provide failsafe backup operation of 90 minutes or more, automatically activating within 10 seconds of a power outage. Self-diagnostic circuitry troubleshoots battery conditions monthly, bi-annually, and annually, removing the need for manual testing. If a failure is detected, the visual status on the LED indicator lights up immediately to alert maintenance personnel to perform needed repairs. Diagnostics testing can also be prompted on-demand using the included magnet flash. Appleton HEX LED Series emergency systems are recommended for installation in all exit routes within hazardous areas and throughout industrial facilities, including hallways, stairways, corridors, and doorways.


The Appleton HEX LED Series offers customers a wide selection of models to precisely satisfy their application needs:

- The emergency lighting system is a standalone lamps-only unit with a 6V or 12V battery.
- The exit sign/emergency lighting combination adds an exit sign to the standalone emergency lighting system. Depending on customer preference or local code requirements, exit signs can be specified as single- or double-sided and come in red or green lettering with an option to snap out the directional arrows.
- The exit sign model offers a power source choice of either AC only or the 90-minute emergency battery backup. Indicators on the signs are clearly visible for 40 feet in all egress directions. These versatile signs can be mounted near exit and entry doors, along walkways, in tunnels and stairways, or to indicate fire alarm call points.

The Appleton HEX Series from Emerson meets UL Standard 844 and 924, OSHA 1910.37 Exit Routes and Emergency Planning, and NFPA 101 Life Safety Code. They are NEC-rated for use in Class I, Div. 2 (Groups A, B, C, D) areas and listed for wet locations.

**For more information, visit
www.appletonelec.com**


MADE IN USA



SP PRODUCTS, INC.


Productivity and value thru ideas

FOR SAFER BETTER FASTER JOBS

We're Proud to be the Electricians' Friend for Over 50 Years!

IP15a

Chamfer Bit
for PVC SCH 40/80




PATENT PENDING

Smooth Beveled Edge after Chamfering

IP27b

Electro Post EP-10
Box Support Bracket

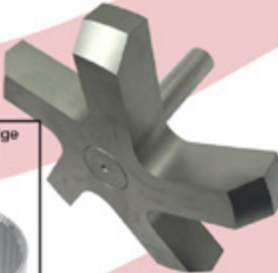


Mounts on all standard stud widths of 2-1/2", 3-5/8" or 6"

PATENT PENDING

IP15b

Chamfer Bit
for Aluminum EMT

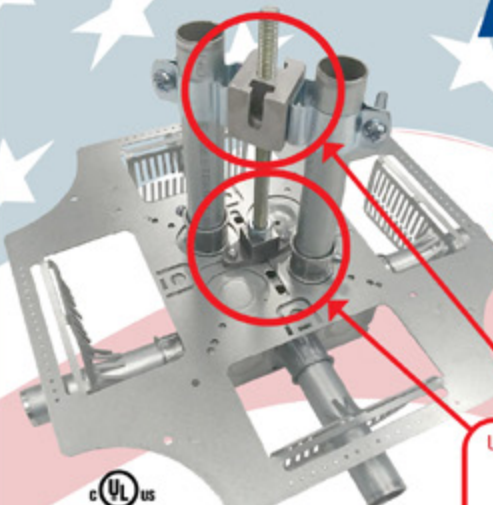


PATENT PENDING

Smooth Beveled Edge after Chamfering

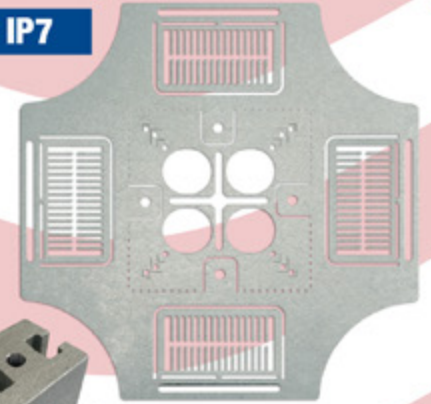
NEW PRODUCTS

4-WAY CONDUIT & BOX SUPPORT PLATE
with Split Fingers for Horizontal or Vertical Installation



Use 4-Conduit Block (IP19 or IP20) with QwikBlock (IP21a)

IP7




IP21a
QwikBlock
PATENT PENDING

IP19/20
4-Conduit Block
PATENTED

PVC Running Thread SCH 40/80
Up to 30" Long

PATENT PENDING

IP3d




NEW Transition Fittings
Saves a Great Deal of Time Repairing Conduit
The Inside Diameter Remains the Same
Allows for Trouble Free Wire and Cable Pulls

IP13k
Inside PVC to Inside PVC
PATENT PENDING

IP13p
3/4" MC Cable to PVC

IP13q
PVC Reducer
PATENT PENDING




Male Threaded PVC Offset

IP3c

1/2" thru 3" Offset for Conduit Sizes 1/2" thru 6"

PATENT PENDING



Plus More Being Invented for SAFER BETTER FASTER Jobs . . . Call With Your Ideas!

new PRODUCTS

New MODbox™ Cooler from Klein Tools® Keeps Drinks Cold for 30 Hours

Klein Tools for professionals since 1857, introduces the new 17-Quart MODbox™ Cooler, to keep food and drink cool on the jobsite while easily transporting.

MODbox™ Cooler, 17-Quart (Cat. No. 62204MB)

- Connects to other MODbox™ components for a custom mobile workstation
- Items stay cool for up to 30 hours in the insulated cooler
- Inside lid compartment stores smaller items such as medicine, napkins, utensils, keys, etc.
- Cooler supports up to 300 pounds (136.1kg); not only does it carry lunch, it doubles as a handy place to sit
- Holds 24 cans (12 fl oz) or 12 long neck bottles (12 fl oz) with ice
- Lockable lid keeps items in the cooler secure (lock not included)
- Adjustable shoulder strap is padded for added carrying comfort
- Other MODbox™ components sold separately

“The new MODbox™ Cooler is perfect for keeping food and drinks cool on the jobsite, and easily connects to other MODbox™ components so it is easy to take on the go,” says Scott Rabe, senior product manager at Klein Tools. “We also know professionals work on their feet all day, so we designed the dual-purpose cooler as a place where they can sit down during their break and enjoy cold drinks and other food items. The multi-compartment cooler also includes a lock hasp to keep items safe.”



For more information, visit
www.kleintools.com



Legrand Launches PlugTail Line Extension

PlugTail® with XHHW-2 Wire, Ideal for Isolated Power Areas

PlugTail® has expanded its range to include the XHHW-2 wire as well as orange connector heads. These enhancements are ideal for applications banning PVC wire and also for healthcare applications where sensitive electronic equipment is used. The device's orange connector head makes identifying isolated circuits during rough in and replacement easy while the plugtail allows for a fast and safe installation with no mistakes — regardless of installer skill level.

- PlugTail Single Receptacle: Tailored for high-powered appliances, offering both NEC® compliant tamper-resistant and standard designs to accommodate future changeouts.
- PlugTail with XHHW-2: Specifically designed for isolated power areas, equipped with orange connector heads for simplified identification of isolated ground circuits.

Each factory-terminated PlugTail device offers both consistent and easy installation, ensuring future-proofing. Keyed UL-Listed connectors snap effortlessly into the device, eliminating wire hassles and allowing electrical contractors to save time. They are finger-safe with no exposed terminals, no taping required, and install up to 5 times faster than traditional devices. Featuring large brass terminal blades, ultrasonically welded polycarbonate connector housing, corrosion-resistant steel strap, impact-resistant nylon face, and a built-in auto-ground clip for positive grounding.

For more information, visit
www.legrand.us

DRIVEN TO DELIVER

THE CONSOLE X



- Clean up those cabs and get your fleet organized!

Your Total Mobile Office Solution

The Truck Console -X combines your Laptop Work Station, Radios, Speakers, Cables, Storage and Cup Holders. No Drill Installation Brackets Included.

The **Truck Console -X** is the latest innovative mobile office solution to join the Mobile Desk brand family of products. This complete control, communication and convenience Utility Truck Console is becoming the new standard for fleets of all sizes. The design of the **Truck Console -X** has originated from our years of experience working directly with the lineman, supervisors, communications, and fleets of some of the most notable utility companies in America. Loaded with standard and optional features that maximize ergonomics, productivity, and fleet/telecom standards into one Mobile Office Solution.



Our Patented Screen Out App **Stops texting** while driving for all employees on all tablets, laptops and smart phones that run Windows, iOS or Android Operating Systems. **It's that easy!**
877-663-3375 Ext 303. www.screenout.net

Find us on:



1-877-663-3375
www.mobiledesk.com

©2018 Mobiledesk

Optique Lighting Launches Architectural Nano Linear Luminaires

Optique Lighting, a leading designer and manufacturer of premium quality LED Nano Linear lighting, is pleased to announce the launch of a family of custom architectural Nano Linear luminaires. Representing the intersection between high-quality tape lighting and architectural linear lighting, the Angolo, Trapezio, Rettangolo I, II and III Nano Linear luminaires are offered in five low-profile sizes and sleek, modern shapes in custom lengths to a designer's exact specification.

"We're making it easier for the design community to specify indoor and outdoor Nano Linear solutions to meet specific project specifications with customization options, while providing easy ordering, fast quoting, and short lead times," said Joe Flynn, president, Optique Lighting.

Meticulously designed and built from the ground up, Optique architectural Nano Linear LED solutions have been thoughtfully crafted with innovative, patented features, guaranteeing quality performance and construction. From the hidden mounting hardware and the precision metal end caps with countersunk hardware to grommets preventing light leaks, the luminaires provide a clean, minimalist look to seamlessly integrate into distinctive commercial and residential architecture.

The families are offered in continuous lengths up to 8 feet or for continuous runs with multiple fixtures (up to 83 1/4 feet). The slim profile dimensions include the 45-degree corner-mount Angolo luminaire that has a 0.73-inch width and 0.87 of an inch in height. The Trapezio is 1.22 inches wide by 0.55 of an inch in height. Rettangolo I is 1.01 inches wide by 0.44 of an inch in height. Rettangolo II is 1.14 inches wide by 0.64 of an inch in height and Rettangolo III is 0.77 inch wide by 0.66 of an inch in height.

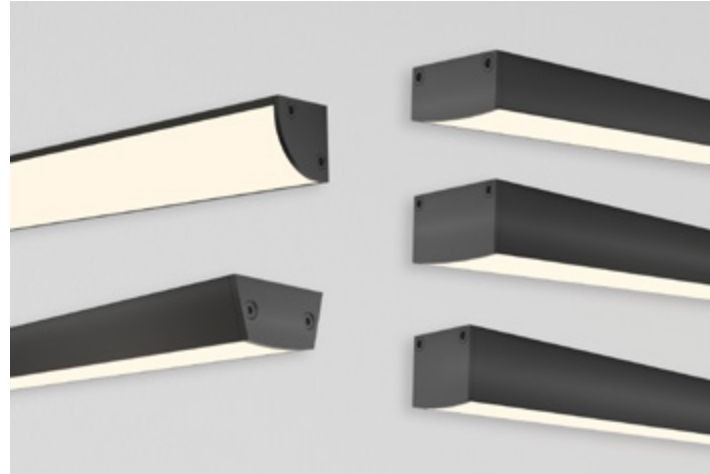
Offered in over ten lumen output packages — for both indoor and outdoor applications — and seven color temperatures (2200K, 2400K, 2700K, 3000K, 3500K 4000K and 5000K CCT) with superior color rendering, the products feature high R9 and R13 values and color variation kept within a 2-step MacAdam ellipse.

The Angolo, Trapezio and Rettangolo Nano Linear luminaires are available in anodized Aluminum and Matte Black, power-coat Gloss White or in a special order RAL color.

The products are compatible with many popular commercial and residential control systems.

The Nano Linear luminaires are built and shipped as complete UL Listed fixtures — not just the light engine that is typical with tape lighting products. The luminaires are also Title 24 compliant. To simplify ordering, the low-profile products will ship with all brackets, screws, and power supplies needed for installation.

**For more information, visit
www.optique-lighting.com**



RANDL
INDUSTRIES, INC.

Install Peace of Mind!

First there was 4 square...
and now the **REVOLUTIONARY 5 Square® Box!!**

You've struggled with 4 Square boxes for years - you know how small, cramped and time consuming they are. Finally, there is a solution that allows you the space you have always needed.

The **5 Square®** Boxes (5" x 5" x 2-7/8") provide up to 88 in³ of interior volume which more than doubles that of most existing boxes on the market.

Create a robust and unrivaled infrastructure for the life of your facility with the **5 Square®** Products!



Fire Signal



- TWICE THE VOLUME AS MOST BOXES
- SAVE LABOR...INCREASE PROFITS
- ELIMINATES TROUBLESHOOTING TIME AND COST
- FULLY UPGRADEABLE SYSTEM
- SPECIFIED BY ENGINEERING FIRMS, HOSPITALS, UNIVERSITIES & GOVERNMENT AGENCIES
- AVAILABLE IN ZINC OR RED

Telecommunications



- INTEGRAL CABLE MANAGEMENT
- SAVE LABOR...INCREASE PROFITS
- FACILITATES MIN. BEND RADIUS REQUIREMENTS
- SUPPORTS CURRENT AND EVOLVING SYSTEMS
- SUPPORTS PoE PLUS
- SPECIFIED BY ENGINEERING FIRMS, HOSPITALS, UNIVERSITIES & GOVERNMENT AGENCIES

RANDL
INDUSTRIES, INC.

P: 509.340.0050 • F: 509.340.0051

See our line of telecom & fire signal boxes at: www.RANDL-INC.com

Making Communications & Fire Protection More Reliable & Cost-Effective!



SP PRODUCTS, INC.
Productivity and value thru ideas
FOR SAFER BETTER FASTER JOBS

2023 NECA
ShowStopper
WINNER

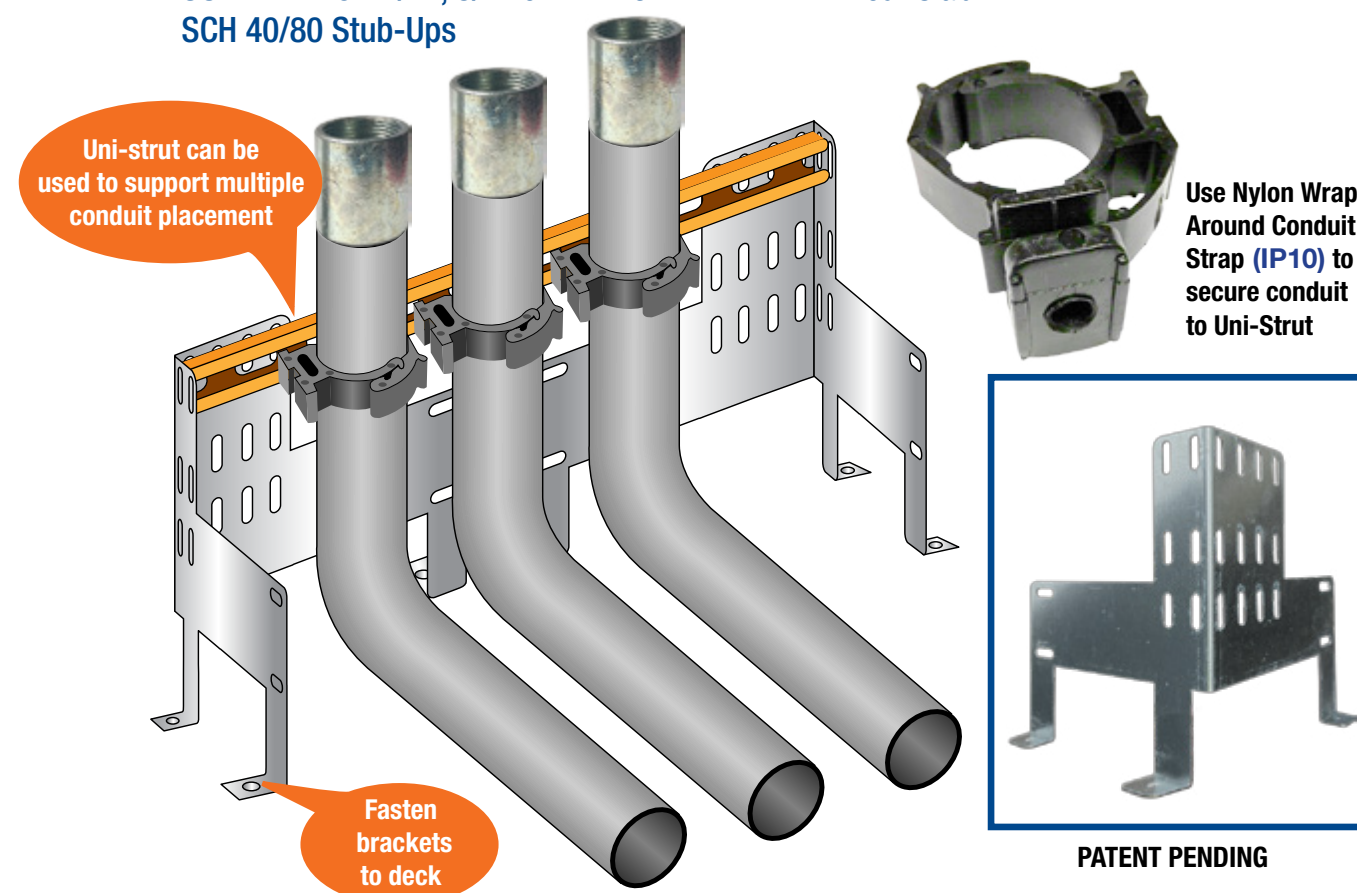


EZ Stub-Up SUPPORT BRACKET

- Support and secure multiple conduits and sizes with brackets and/or uni-strut at a single stub-up location
- Use nylon wrap around conduit straps, minerllacs, one-hole straps or Ty wraps to secure conduit to bracket or uni-strut
- 16 guage galvanized steel
- SUITABLE FOR 1/2", 3/4" or 1" PVC SCH 40/80 Stub-Ups

INSTALLATION:

1. Position bracket on deck before the concrete pour
2. Fasten bracket to deck
3. Secure conduit to bracket or uni-strut with nylon wrap around conduit straps, minerllacs, one-hole straps or Ty wraps
4. Pour slab



Perfect for Poured Precast Decks!

SP PRODUCTS, INC.
Productivity and value thru ideas



PATENT PENDING
PATENTED



LABELS APPLY TO PRODUCTS ONLY WHERE SHOWN ABOVE

730 Pratt Boulevard • Elk Grove Village, IL 60007
P: (847) 593-8595 • F: (847) 593-8629 • Toll-free (800) 233-8595
E: info@spproducts.com • www.spproducts.com

new
PRODUCTS

TRIO Power Supplies with Integrated Circuit Breaker

Plug-and-play solution for the control cabinet

The TRIO Power 24 V power supply from Phoenix Contact features a space-saving design, easy handling, and smart diagnostic functions. Output currents range from 5 to 40 A. The line includes options with an integrated multichannel circuit breaker.

The power supplies' narrow overall width saves space, making it possible to mount them directly, side by side. The low overall depth enables installation in 210 mm small housings. Push-in connection technology, marking fields, stripping identification, and tamper-proof setting make the TRIO easy to install and handle. The devices have an intuitive commissioning concept for quick deployment.

In addition, the power supplies have several diagnostic options. The multicolor LEDs and a collective relay contact signal important states, such as DC OK, overload, and short circuit. An optional IO-Link interface is available for diagnostics and parameterization. With up to 960 W output power in 1 AC and 3 AC versions, the power supply is suitable for drive technology. The dynamic boost (150 percent for five seconds) also enables difficult loads to be started. With the powerful output characteristic curve, even capacitive loads can be charged without any problems. The optional built-in electronic circuit breaker offers high system availability.

The power supplies with integrated multichannel circuit breaker are rated for NEC Class II and Class I, Division 2 applications.



For more information, visit
www.phoenixcontact.com/triopower

Emerson Debuts LED Wall Pack Luminaires for Commercial and Industrial Buildings

Appleton LED luminaires are ideal for retrofitting legacy HID wall packs to achieve lower energy consumption and reduced maintenance costs

Emerson has introduced Appleton™ IWL weatherproof luminaires, a new line of energy-efficient LED wall packs that meet the security, sustainability, and lighting output requirements of modern commercial and industrial facilities. Appleton IWL luminaires ensure safety for people and property by providing up to 15,000 lumens of optimally distributed light when mounted on building exteriors and at outdoor entrances. With the fixture's nine field-selectable settings, installers can precisely match color temperatures and brightness levels to large or small outdoor areas.

When compared to conventional wall pack lighting, Appleton IWL luminaires offer notably better performance and dependability, particularly in applications where condensation and humidity are present. Appleton IWL luminaires are housed in a tough cast aluminum enclosure lined with silicone rubber gasketing and secured by stainless-steel bolts and pins, in contrast to standard wall pack lighting, which is enclosed in plastic. An IP65 ingress certification qualifies IWL luminaires for harsh outdoor areas in power generation plants, steel makers, cement, stone, and sand production sites, shipbuilding and marinas, pulp and paper plants, and foundries. Dependability is further strengthened by a broad temperature range of -40°C to +40°C (-40°F to 104°F).

"Wall packs are routinely damaged by outdoor environments, requiring frequent repairs and total fixture replacements. Also, the safety of employees is compromised when a wall pack is non-operational," explained Frank Cunningham, senior product marketing manager at Emerson. "Appleton IWL weatherproof luminaires are hardened to withstand outdoor environments without needing maintenance, and the housing design keeps water from damaging internal components. Plus, by harnessing LED as a light source, relamping is all but eliminated, reducing labor hours and lowering costs."

Appleton IWL Series LED wall packs offer three field selectable color temperatures (CCT): 5000K Cool White, 4000K Neutral White, or 3000K Warm White along with wattage levels of low (5000W), mid (10,000W) and high (15,000W), covering nine possible lumen and color temperature combinations.

For more information, visit
www.appletonelec.com



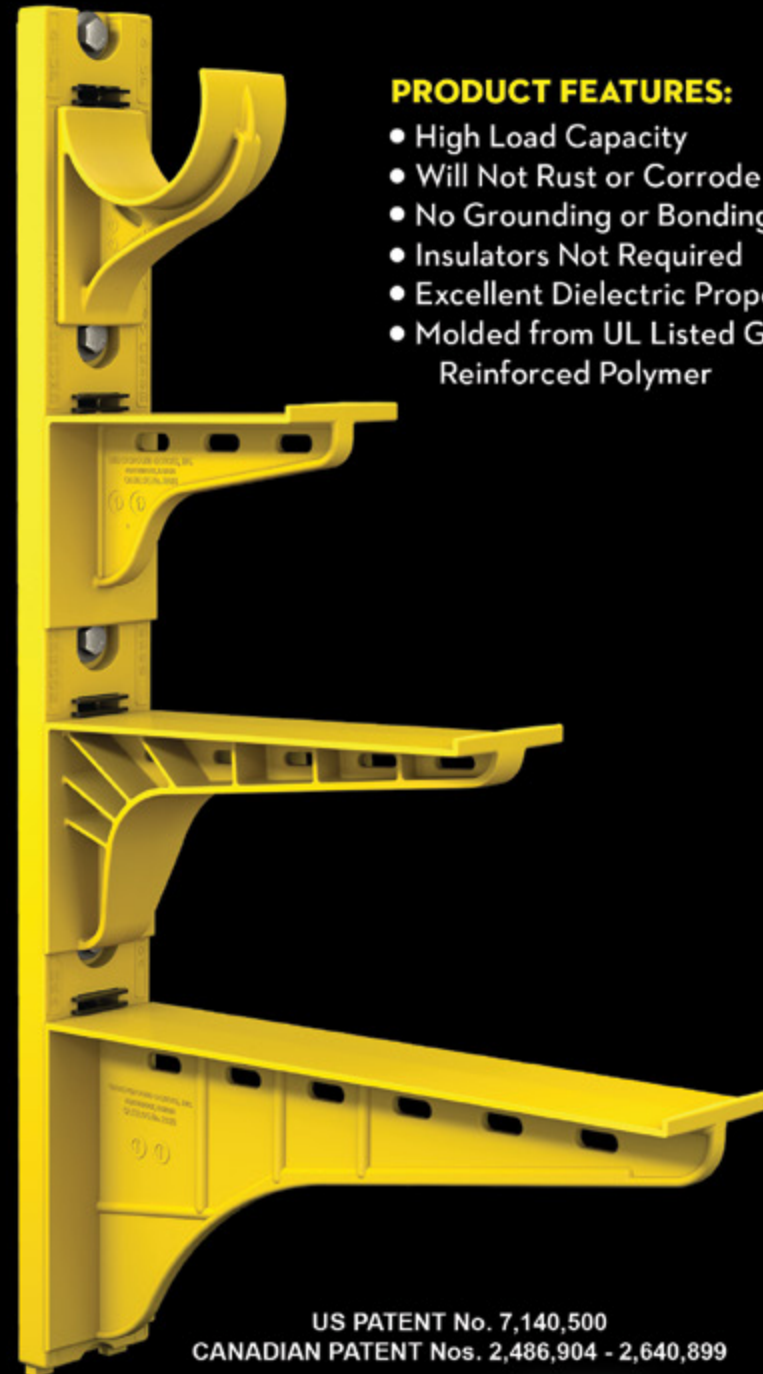
The Heavy Duty Nonmetallic CABLE RACK

For Power and Communications Manholes And Vaults



PRODUCT FEATURES:

- High Load Capacity
- Will Not Rust or Corrode
- No Grounding or Bonding
- Insulators Not Required
- Excellent Dielectric Properties
- Molded from UL Listed Glass Reinforced Polymer



US PATENT No. 7,140,500
CANADIAN PATENT Nos. 2,486,904 - 2,640,899



HDL Arm Lock shown with
RA04 Arm and CR36-B Stanchion



3HDS - 3" throat saddle shown with
a cable secured by cable ties.



RA08 - 8" arm shown with three
cables secured by cable ties.

UNDERGROUND DEVICES
INCORPORATED



420 ACADEMY DRIVE
NORTHBROOK, IL 60062
Phone: 847-205-9000 • Fax: 847-205-9004
Website: www.udevices.com

New Fixed Blade Precision Drivers from Klein Tools® Perfect for Tight Spaces

Klein Tools for professionals since 1857, introduces Precision Fixed Blade Screwdrivers, with narrow blades for work in tight spaces and low clearance areas, to get the job done when precision is key.

Precision Screwdriver Set, Slotted, Phillips, and TORX® 8-Piece (Cat. No. 85617)

- Precision Screwdrivers feature rotating caps for optimum and precise control
- Screwdrivers have color coded rings and hot stamped cap markings to effortlessly spot each tip type
- Cushion-Grip handles for maximum comfort when working on small equipment
- Over-sized cap markings for quick identification of tip size
- Heat treated and precision-machined tips for greater strength

“Given the wide range of places that professionals have to work, they can often find that spaces are too tight or low clearance to fit traditional drivers,” says Adriana Facchina, associate product manager at Klein Tools. “The new Precision Fixed Blades Screwdrivers feature narrow blades to easily get into these tight spaces, plus the drivers are heat-treated for maximum strength, and precision-machined for strength. On top of that, the drivers have color coded rings and hot stamped cap markings making it easy to distinguish between tip types. The caps also rotate for greater control when working on small fasteners.”

**For more information, visit
www.kleintools.com**



Affordable test equipment for 2023



DON'T MISS OUT!

Does your product help to increase profits or improve safety and overall working conditions for the electrical contractor? If so, don't forget to submit your product for nomination as one of *Electrical Products & Solutions'* **"TOP PRODUCTS OF 2023"**.

**All the winners will be featured
in our December issue.**

Deadline: December 8, 2023

Requirements:

Submit a high resolution photo (300 dpi) of your product, along with a brief description (up to 150 words). *Please note on your submission that it is for consideration for Top Products.*

E-mail: danny@epsmag.net

or mail to: **Electrical Products & Solutions**

2009 Eagle Ridge Drive, Birmingham, AL 35242



Spitfire - Buried Low Voltage Cable Fault Locator

- ◆ Accurate
- ◆ Easy to use
- ◆ High energy output
- ◆ Proven reliability
- ◆ Compact design
- ◆ Lightweight

Wayfind'r - Impulse cable tracer

- ◆ Accurate
- ◆ Easy to use
- ◆ Connects directly to energized cables
- ◆ Distinct signal for easy tracing
- ◆ Traces direct buried and cables in conduit
- ◆ Rugged, compact design

Impulse Phaser - Cable / phase system

- ◆ Accurately identifies cables in trenches, vaults, conduits and enclosures
- ◆ Identifies jacketed, shielded, cables, even in pipe
- ◆ Accurately identifies phases in multi-conductor cables
- ◆ Easy to understand and use



TIMCO INSTRUMENTS, LLC

Phone: (401) 539-7120 Fax: (401) 539-6018
www.timcoinstruments.com



advertiser
INDEX

This advertiser index is compiled as a courtesy to our readers. While every effort is made to provide a complete and accurate listing of companies and page numbers, the publisher is not responsible for errors. **Click the company name or page number to see their advertisement.**

Company	PG#	Company	PG#
APPLETON / EMERSON	13	POWERSIGHT / SUMMIT TECHNOLOGY INC	11
APPLETON / EMERSON	15	RANDL INDUSTRIES	25
CONDUIT REPAIR SYSTEMS	4	SOLAHD / EMERSON	17
iTOOLco	IFC	SOLAHD / EMERSON	19
iTOOLco	IBC	SP PRODUCTS INC	3
KRENZ & COMPANY	32	SP PRODUCTS INC	21
MILLER SAFETY CONSULTANTS LTD	7	SP PRODUCTS INC	26, 27
MOBILE DESK	1	SP PRODUCTS INC	BC
MOBILE DESK	23	TIMCO INSTRUMENTS LLC	31
PHOENIX CONTACT USA	5	UNDERGROUND DEVICES	29

When it comes to transformer cooling fans, Krenz-Vent is the industry recognized gold standard. Our leadership position is earned through 80+ years of R&D plus our superior engineering and customer service. You can rest easy when you specify Krenz fans.

ENGINEERED TO COOL
There is no comparison.



KRENZ & COMPANY, INC.

KRENZVENT.COM • 262.255.2310 • KRENZ@KRENZVENT.COM

BONUS FEATURE

TO VISIT AN ADVERTISER'S WEBSITE, SIMPLY CLICK THE QR CODE OR COMPANY NAME IN THEIR AD.



Electrical
Products & Solutions

The Engineering Source for Electrical Contractors

CORDLESS CANNON 6K

iTOOLco.
WWW.iTOOLco.com | 865.670.3713

f i t y in

TOP PRODUCTS 2022
Electrical Products & Solutions

Speed, versatility, and performance are all yours with iTOOLco's Cordless Cannon 6K™. This portable 6,000 lb. puller is intuitively designed to handle all of your day-to-day wire pulls.

The built-in capstan switch automatically turns the puller on and off. Simply tug on the rope to start the pull and slack off the rope to shut it down. Delivers dynamic performance in remote locations or areas where power is not yet available.

SCAN ME





SPPRODUCTS, INC.

Productivity and value thru ideas
FOR SAFER BETTER FASTER JOBS



We're Proud to be the Electricians' Friend for Over 50 Years!

IP5

"The Original"

Enter Any KO on Both Sides of the Box



IP19/20

4-Conduit Block
PATENTED

IP21a

QwikBlock
PATENT PENDING

Use 4-Conduit Block (IP19 or IP20) with QwikBlock (IP21a)

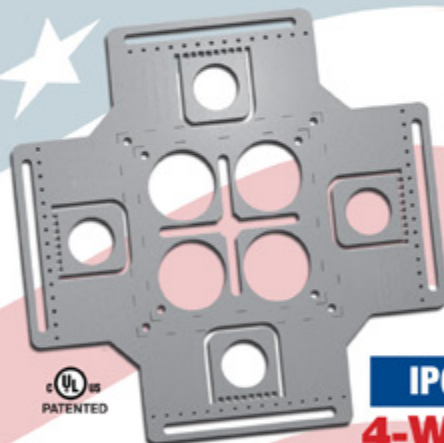
IP6d

2-Way

with Split Fingers for Horizontal or Vertical Installation



Our Family of Conduit & Box Support Plates Saves Valuable Time & Money!



IP6

4-Way

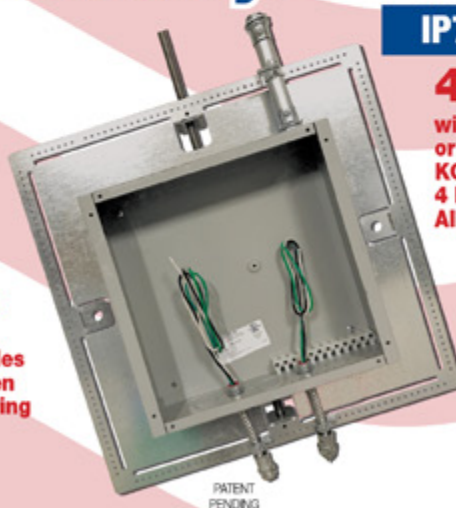
Enter Any KO on All 4 Sides of the Box Plus 4 Large Open KOs in Center Allows Entering Back of Box



IP6a

2-Way/Half

Enter Any KO on 1 or 2 Sides of the Box Plus Large Open KOs in Center Allows Entering Back of Box



IP7

4-Way

with Split Fingers for Horizontal or Vertical Installation. Enter Any KO on All 4 Sides of the Box Plus 4 Large Open KOs in Center Allows Entering Back of Box.

IP8

Mount Horizontally or Vertically from One Single Support

20 x 20

Supports up to 12 x 12 J-Box

28 x 28

Supports up to 20 x 20 J-Box

MADE IN THE USA!

Plus More Being Invented for **SAFER BETTER FASTER** Jobs . . . Call With Your Ideas!

SPProducts.com **800-233-8595** info@SPProducts.com