

FEBRUARY 2024

Electrical

Products & Solutions™

The Purchasing Guide for Electrical Contractors

www.epsmag.net



MOVING BEYOND THE 100M STANDARD

*Network Design Considerations
as Links Get Longer*



iTOOLco.

WWW.ITOOLCO.COM | 865.670.3713



In-Line Cordless Cable Cutter



Part # ILCCC1000

iTOOLco's in-line Cordless Cable Cutter features 1000 MCM Cu/Al jaws that deliver rapid, installation-ready cuts in seconds. This open jaw in-line cutter is equally balanced, allowing you to cut effortlessly even in the tightest spots. Featuring a LED light ring for precise visual placement of your cut, this compact tool cuts through 1000 MCM copper and aluminum at least 2 times faster than other cutters. Not rated for ACSR.

www.ITOOLco.com

865-670-3713

Picking Up and Installing a KUIKBOX
Is as easy as 1, 2, 3!

1



Grab a KUIKBOX

2



Pick Any Square Cover

3



Install in Minutes!

KUIKBOX

Electrical Enclosure System

Think Simpler. Design Better.



HOME OF THE KUIKBOX

42906 Colony Road • Olivet, S. Dakota 57052
kuiibox@gmail.com • For more info, visit kuiibox.com

**BUILT
IN THE
USA**



COMPANY PROFILE

6 Protect Yourself
Miller Safety Consultants —
A Leader in Arc Flash Protection

COVER STORY

8 Moving Beyond the 100M Standard
Network Design Considerations
as Links Get Longer

DEPARTMENTS

16 INDUSTRY NEWS
22 NEW PRODUCTS
32 AD INDEX

ON THE COVER

Photo courtesy of Leviton



Electrical
Products & Solutions™
The Purchasing Guide for Electrical Contractors www.epsmag.net

PUBLISHER
Danny J. Salchert

OFFICE MANAGER
Anita Salchert

CREATIVE DIRECTOR
Derek Gaylard

CIRCULATION DIRECTOR
Pam Fulmer



PRESIDENT
Danny J. Salchert

EXECUTIVE AND
ADVERTISING OFFICES
2009 Eagle Ridge Drive
Birmingham, AL 35242
phone: 205.981.4541
www.epsmag.net
danny@epsmag.net

Electrical Products & Solutions™ is published twelve times a year on a monthly basis by ABD Communications, Inc., 3591 Cahaba Beach Road, Birmingham, Alabama, 35242, USA. *Electrical Products & Solutions™* is distributed free to qualified subscribers. Non-qualified subscription rates are \$57.00 per year in the U.S. and Canada and \$84.00 per year for foreign subscribers (surface mail). U.S. Postage paid at Birmingham, Alabama and additional mailing offices. *Electrical Products & Solutions™* is distributed to qualified readers in the electrical contracting industry. Publisher is not liable for all content (including editorial and illustrations provided by advertisers) of advertisements published and does not accept responsibility for any claims made against the publisher. It is the advertiser's or agency's responsibility to obtain appropriate releases on any item or individuals pictured in an advertisement. Reproduction of this magazine in whole or in part is prohibited without prior written permission from the publisher.

POSTMASTER: Send address changes to
ABD Communications, Inc., P.O. Box 382885
Birmingham, Alabama 35238-2885

FOLLOW US ON



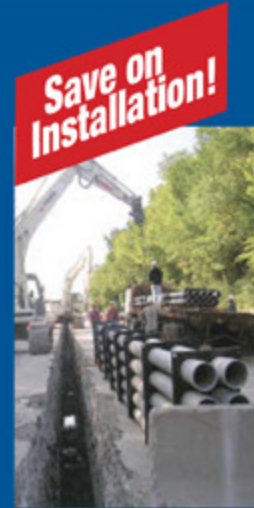
SP PRODUCTS, INC.
Productivity and value thru ideas
FOR SAFER BETTER FASTER JOBS



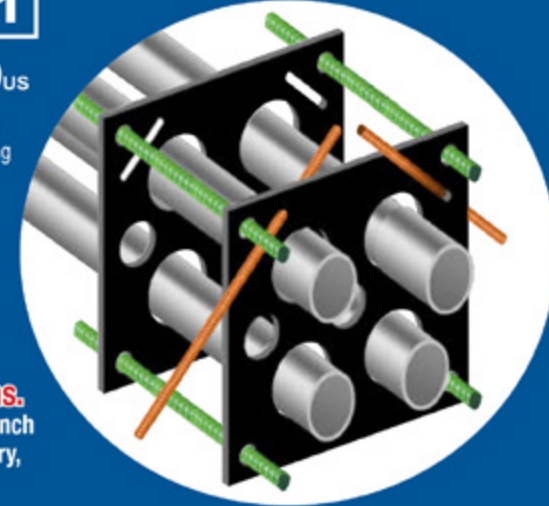
We're Proud to be the Electricians' Friend for Over 50 Years!

Qwik Duct
Safer Better Faster

HDPE CUSTOM TEMPLATES
In Any Configuration Required



Assemble Conduit Above Trench-
No Workers Below -
Prevents Injuries and Deaths.
Also Allows Digging a Narrower Trench
for Less: Excavation, Concrete, Slurry,
Backfill & Shoring.



PVC Offset
Sizes 1/2" thru 6"
Meets Flexible Mandrel
Test Requirements

Bore Spacers **IP2**
Sizes 1/2" thru 6"
Roll assembled conduit into
caissons and under
obstructions



IP13A-F

Conduit Transition Couplings



Save Cost on the Rigid Nipple, Tape & Labor
Use for Entire Job - Not Just for Repair

Plus More Being Invented for SAFER BETTER FASTER Jobs . . . Call With Your Ideas!



SPProducts.com 800-233-8595 info@SPProducts.com

REPAIR CONDUIT IN A SNAP!

No Tape • No Plastic Straps • No Metallic Straps

NO KIDDING!

*Designed especially for power, communications
and fiber optics.*



STEP 1
Remove damaged
conduit



STEP 2
Cut split duct
conduit to fit



STEP 3
Snap in
place

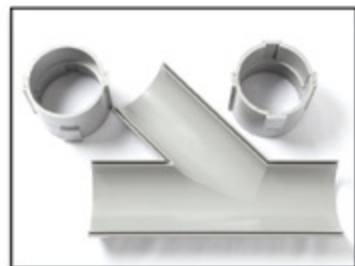


STEP 4
Attach
adapters



STEP 5
Finish job in
record time

"The World Leader In Split Conduit Products"



Conduit Repair Systems, Inc.

The World Leader In Split Conduit Products



800.670.1804 • 435.673.8724 fax • crs@conduitrepair.com • www.conduitrepair.com

RANDL
INDUSTRIES, INC.

Install Peace of Mind!

First there was 4 square...
and now the **REVOLUTIONARY 5 Square® Box!!**

You've struggled with 4 Square boxes for years - you know how small, cramped and time consuming they are. Finally, there is a solution that allows you the space you have always needed.

The **5 Square®** Boxes (5" x 5" x 2-7/8") provide up to 88 in³ of interior volume which more than doubles that of most existing boxes on the market.

Create a robust and unrivaled infrastructure for the life of your facility with the **5 Square®** Products!

Fire Signal



- TWICE THE VOLUME AS MOST BOXES
- SAVE LABOR...INCREASE PROFITS
- ELIMINATES TROUBLESHOOTING TIME AND COST
- FULLY UPGRADEABLE SYSTEM
- SPECIFIED BY ENGINEERING FIRMS, HOSPITALS, UNIVERSITIES & GOVERNMENT AGENCIES
- AVAILABLE IN ZINC OR RED

Telecommunications



- INTEGRAL CABLE MANAGEMENT
- SAVE LABOR...INCREASE PROFITS
- FACILITATES MIN. BEND RADIUS REQUIREMENTS
- SUPPORTS CURRENT AND EVOLVING SYSTEMS
- SUPPORTS PoE PLUS
- SPECIFIED BY ENGINEERING FIRMS, HOSPITALS, UNIVERSITIES & GOVERNMENT AGENCIES



RANDL
INDUSTRIES, INC.

P: 509.340.0050 • F: 509.340.0051

See our line of telecom & fire signal boxes at: www.RANDL-INC.com

Making Communications & Fire Protection More Reliable & Cost-Effective!

Protect Yourself

Miller Safety Consultants — A Leader in Arc Flash Protection

Vince Miller started Miller Safety Consultants, a veteran owned business in 1999. The goal of the business was to provide cost effective safety consulting, employee training such as: confined space entry, fall protection, electrical safety and provide sales of electrical shock and flash protective equipment and fall protection equipment to businesses in the Washington DC area.

Reliance Industries provided fall protection products and much of the sales and training was on behalf of the supplier. In 2000, the owner decided to retire from his business, and Vince decided to discontinue the fall protection line of his business and concentrate more in the electrical training and products.

Vince had been a distributor for Certified Insulated Products (CIP), a manufacturer of electrical insulated tools and electrical arc flash clothing manufactured by Otex in Rochester, New York. As a distributor, Vince provided sales through his internet website and much through relationships with electrical contractors. His training was a classroom environment and was provided directly to customers but he also taught as a sub-contractor for other safety consulting companies and the

Chesapeake Safety Council in Baltimore, Maryland. In 2005, Vince partnered with Vivid Learning Systems in Cascades, Washington to provide on-line training in safe work practices.

Training in electrical safe work practices is still provided locally in the Washington DC area and as a partner with an electrical engineering firm and online. The training is based on the Occupational Health and Safety Administration (OSHA) standards and the National Fire Protection Association (NFPA) 70E standard.

Miller Safety Consultants is now a distributor for Cementex USA, Burlington, New Jersey, for insulated tools and equipment and clothing from OTEX Protective, Rochester, New York.

The majority of his sales of products

are from the web-based store. Cementex is nationally known for their quality equipment. Otex Protective is becoming more known for their quality clothing. For years, they have manufactured their products under other provider labels. Vince chose to not create his clothing line, but to sell the manufacturer product.

Vince has worked with many electrical company employees to fine-tune the clothing to be more comfortable for the user. Working closely with the manufacturer, they have made slight changes in how the cloth pattern was modified to meet final production. An example is the lightweight 40 Calorie vented hood offered by Otex.

The material is of the latest technology. The vented assembly is constructed for balance on the back of the hardhat and the airflow is 27 CFM to prevent fogging of the face shield and provide cooling to the worker. It took over a year to develop the product with the user prior to having the hood "flash tested". This product is now standard issue with many electrical contractors.

Being a small business and having quality providers has resulted in satisfied customers for Miller Safety Consultants. Being a direct supplier for OTEX Protective, another small business means customized customer needs can be met. □

For more information, visit
Miller Safety Consultants at:
www.electricalsafetysupply.com, email
Vince at: sales@millersafetyltd.com.

AUTHORIZED
Cementex
The Safety Tool Specialists
DISTRIBUTOR

Give Vince a call at
(703) 367-0404



Deluxe Maintenance Tool Kit



Class O Glove Kit

Protect yourself from "Arc Flash"

ARC FLASH LIFT-FRONT HOOD WITH V¹² HIGH-VOLUME VENTILATOR
Compact. Powerful. Reliable

Our V¹² High-Volume Ventilator boasts an unexpectedly quiet, high output (35+ CFM) turbine fan to cool and circulate the ambient air within the hood. Fully protected beneath it's durable ABS shell and added fabric layering, the V¹² High-Volume Ventilator isn't just compliant, it's superior.



40 CAL/CM2 ULTRALIGHT CLOTHING BY OTEX

Our new dual-layer Ultralight clothing takes advantage of DuPont's® dedication to scientific advancement and Westex's® industry leading dependability. Weighing in 37% lighter than traditional HRC4 PPE, our Ultralight Clothing is the most innovative contender in the lightweight arena.

HYBRID LAYERING

Combined Fabric Weight: 14 oz

Outer Layer: DuPont® Protera
Color: Navy

Inner Layer: Westex Ultrasoft
Color: Safety Orange



CALL US TODAY

(703) 367-0404

OR VISIT OUR ONLINE ELECTRICAL SAFETY EQUIPMENT STORE
www.electricalsafetysupply.com

MOVING BEYOND THE 100M STANDARD

*Network Design Considerations
as Links Get Longer*

THE 100-METER DISTANCE LIMITATION FOR COPPER CABLING CHANNELS HAS LONG BEEN THE INDUSTRY STANDARD FOR NETWORK DESIGNERS, INSTALLERS, AND MANAGERS TO GET THE MOST RELIABLE AND CONSISTENT PERFORMANCE OUT OF THEIR NETWORKS.

However, as smart building device deployments and PoE applications push network devices farther away from telecommunications rooms, the 100-meter limit is stretching enterprise and industrial environments to consider alternative solutions.



What is the 100-Meter Standard?

Prior to the first TIA 568 standard, each networking vendor used their own proprietary cabling components and architecture. Some systems used coax while others used twisted pair, and maximum cabling lengths varied by whichever proprietary system the vendor used. Ultimately, these aspects meant there was no interoperability between vendor systems.

To address these issues, the 1991 TIA/EIA-568 cabling standard created a “structured cabling” architecture. The standard established a standardized

twisted-pair horizontal cabling system design that was vendor agnostic, allowing for interoperability for both cabling and devices. Also, no knowledge of the intended use was required for any given channel, allowing for a system that could support any device and easily handle equipment changes and upgrades.

The standard established “universal” cabling systems. Computer and networking device vendors could design transmission equipment based on the maximum worst-case media scenarios, the TIA-568 standard created a predictable electrical performance

distance with a 100-meter horizontal cabling distance, effectively allowing these networking devices to guarantee performance within the standard distance.

When 100 Meters Isn’t Enough

Networking is vital to more and more enterprise functions outside the traditional office space. Educational and corporate campuses span long distances, with many indoor and outdoor locations. Warehouses, distribution centers, and sports facilities are massive structures that require long distances of networking infrastructure to keep them running. Additionally, as buildings become smarter, smart devices like cameras, access controls, operational building controls, and wireless access points could be placed throughout these locations, on multiple floors, perimeter fences, parking lots, and distant security booths.

Long distances can create sub-optimal performance conditions for networking infrastructure. What are the options for overcoming the 100 meter distance challenges?

Telecommunications Room or a Remote Telecommunications Enclosure and Switch

Adding a telecommunications room, or enclosure with a switch, maintains use of standards-based cabling system design, allows for cabling vendor interoperability, and guarantees device functionality and interoperability at any location. Also, this solution maximizes flexibility, facilitating moves, adds, and changes.

Between construction costs, operational cooling costs, and additional network equipment, adding a telecommunications room or enclosure is the highest cost option. Also, this option doesn’t work if space is at a premium.

Link Extenders or Media Converters

When cost is an issue, link extenders and media converters are a good solution as they are lower cost than

adding spaces and switches. They provide centralized management, providing both data and power, and a power backup, to the end device from the head-end closet. These solutions also guarantee device functionality, future interoperability, and distance capabilities well beyond 100 meters.

Link extenders and media converters can create additional potential points of failure, especially in outdoor environments. It is highly recommended that these solutions have surge protection in outdoor applications. Lastly, component costs are higher than simple cabling costs.

Single-Pair Ethernet

Single-pair Ethernet is an emerging technology that carries both power and data, with the potential to support



“We introduced GREENPACK Bulk Packs for copper jacks more than 10 years ago, and we’re excited to expand our GREENPACK bulk packs to include copper patch cords. Combined with Sustainably Smart Packaging, this is the latest reinforcement of our commitment to simplifying jobsite activities for contractors and protecting the environment by reducing single-use plastics and minimizing overall waste.”

—Kirk Krahn, senior product manager at Leviton Network Solutions



Power Quality Analyzers & Loggers

CONNECT DIRECTLY TO AND SAFELY MONITOR UP TO 15KV

MODEL 15KVPSET VOLTAGE PROBES

THE MODEL 15KVPSET VOLTAGE PROBES ALLOW CONNECTING POWERSIGHT POWER ANALYZERS DIRECTLY TO 3-PHASE VOLTAGES UP TO 15 KILOVOLTS. NORMALLY, PROFESSIONALS WHO WISH TO MEASURE 12,470 VOLT LINES NEED TO LOCATE OR INSTALL A PT (POTENTIAL TRANSFORMER) IN ORDER TO MONITOR MEDIUM VOLTAGES. THE 15KVPSET ALLOWS DIRECT CONNECTION OF MEDIUM VOLTAGES TO POWERSIGHT ANALYZERS. SHOWN WITH OPTIONAL HOT STICKS, THE 15KVP HAS SHEPHERD HOOKS FOR HANGING ON BARE CABLE, TAPING OR BOLTING TO BUS BAR, OR ANY OTHER CONNECTION THAT IS NEEDED. THE 15KVPSET COMES DISASSEMBLED IN ITS OWN COMPACT CANVAS CARRYING CASE.



15 KVP Voltage Probe (Single)

15KVPSet (3 Probes, 9 Hot Sticks, Case)



The World's Only Medium Voltage Direct Connection Solution for Portable Power Analysis.



BUY • RENT • TRADE IN

PowerSight.com • sales@powersight.com • 1-925-444-7027

Tech Tips Fiber Raceway System

The Leviton Fiber Raceway System (FRS) provides a robust solution to route fiber cabling in data centers, head ends, telecom rooms, and wiring closets. Comprised of solid or slotted duct sections, horizontal and vertical elbows, tees, and cross sections, the Fiber Raceway is a modular, bend-radius compliant pathway solution.

1. Create a floor plan that includes cabinet and rack placement, ceiling height, and any other pathway restrictions. Select duct sizes that meet the required cable volume for current and future demands.
2. Identify transition and drop-off requirements. Plan a minimum of one drop-off for each rack or cabinet—more can be retroactively added, if needed. Mounting kits can vary, but they should be spaced no more than 3 feet (0.9 meters) for fiber, and no more than 2 feet (0.6 meters) high fiber volumes or armored cabling.
3. Calculate the number of needed duct sections, joiners, mounting kits, transitions, and drop-offs. Leviton recommends 5-10% additional duct sections and joiners for any inconsistencies between the site and plan.

channel lengths up to 1,000 meters. It also is based in a familiar technology: twisted-pair cabling.

Since single-pair Ethernet is an emerging technology, there are no commercially available building automation devices yet. It also has limitations when it comes to: power levels, which are currently less than Class 4 PoE power; data rates, with 10 Mb/s limitations beyond 40 m; and a limited number of industrial control devices.

Of course, there is also standard twisted pair cable solutions.

Cable manufacturers have produced cables with “enhanced” performance for as long as category cables have existed, creating Cat 5e, Cat 6 and Cat 6A cables with headroom to perform above the standard. Many claims in the market today state that they support distances beyond 100 m depending on Ethernet speed and PoE power level, but these extensions are not without risk of performance issues. Want to learn more about how to take advantage of your twisted-pair cable for greater distances, or design a network architecture to go farther? Check out our webinar Moving Beyond the 100m Standard.

Making a Sustainable Difference on the Jobsite

Product packaging like boxes, reels, and bags create large amounts of jobsite waste, especially for network deployments that require large quantities and a variety of networking products. As part of our commitment to sustainability, we are constantly taking strides to reduce the amount of jobsite waste that those packages would create.

With GREENPACK™ bulk packs and Sustainably Smart Packaging, we are designing our packaging to use less materials, while also using recycled and recyclable materials. These packaging choices eliminate the need for single-use plastics and reduce the amount of produced material that will be thrown into a landfill.

Key benefits of our GREENPACK Sustainably Smart Packaging include:

- A reduction of 30,000 pounds of plastic per year in jobsite waste with fully recyclable cartons, bulk packs, and no single-use plastics.
- Environmentally responsible box materials are 100% kraft paper printed with eco-friendly, soy-based inks and minimal ink coverage.
- Packaging is designed for smarter



Extend Luminaire Life While Reducing Energy Consumption

The Appleton™ Mercmaster™ Connect LED by Emerson is designed to illuminate hazardous and harsh industrial locations with integrated motion and illuminance sensors. Paired with Emerson's Plantweb Insight Connected Lighting Application, operators have access to lighting usage data and sustainability analytics.

The Mercmaster Connect LED provides facility managers with continuous monitoring of their LED lighting with real-time insights gained into sustainability goals, diagnostics and lumen levels from any remote location at dramatically lower costs as compared to wired alternatives, with faster installation time and minimal disruption to plant operations.

Learn more at: masteringled.com



Appleton™ Mercmaster™ Connect LED

APPLETON

The Emerson logo is a trademark and a service mark of Emerson Electric Co. © 2021 Emerson Electric Co.


EMERSON

CONSIDER IT SOLVED™

installation with perforated windows for easy product identification, hand holes for easy transit, and information entry fields on the box.

- GREENPACK bulk packs save an estimated 75 minutes of installation time per 1,000 cords.

“We introduced GREENPACK Bulk Packs for copper jacks more than 10 years ago,” said Kirk Krahn, senior product manager at Leviton Network Solutions. “And we’re excited to expand our GREENPACK bulk packs to include copper patch cords. Combined with Sustainably Smart Packaging, this is the latest reinforcement of our commitment to simplifying jobsite activities for contractors and protecting the environment by reducing single-use plastics and minimizing overall waste.” □

For more information on this and other GREENPACK Bulk Pack options, visit www.Leviton.com/Greenpack

LEVITON®

ASK THE EXPERTS



Q: What is the advantage of using an indoor/outdoor cable throughout a campus installation?

One of the key advantages for using Plenum Indoor/Outdoor copper and fiber cabling throughout a campus, or large premises, is that a cable rated for indoor and outdoor environments could eliminate the need for costly transition points inside buildings. The transition point allows the outdoor-rated cable to connect to indoor-rated cable that has higher fire ratings to keep people safe indoors.

A: However, it’s important to select the ideal indoor/outdoor cable for these types of installations. These cables need to have comprehensive fire performance capability while also having strong protection in outdoor conditions. Leviton’s RDT I/O copper cable or ADVENTUM™ fiber cable, have these characteristics, allowing them to perform effectively in indoor/outdoor conditions. As an added benefit, RDT I/O cable includes the award-winning FLX-1™ technology which reduces recoil and enhances cable flexibility for the best indoor/outdoor cable installation experience in the industry.



Power Quality Analyzers & Loggers

MONITOR ANY POWER SOURCE OR LOAD



Compact full-featured
Power Quality Analyzer
for all your needs

SCAN ME



COMPACT - CAPABLE - VERSATILE
POWER ANALYZERS

IT'S ALL WE DO.

BUY • RENT • TRADE IN

VERIFYING BACKUP POWER
LOAD STUDIES
COST & ENERGY ANALYSIS
100V – 4160V MOTORS
POWER QUALITY
COMMISSIONING
HARMONIC DISTORTION
PREDICTIVE MAINTENANCE
DC POWER TESTING
400HZ MONITORING
AND MUCH MORE



Products in Stock!

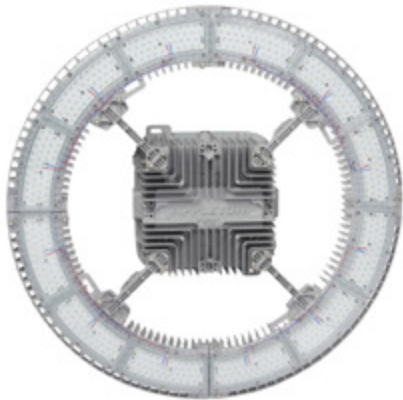


Most Orders Ship
in 1-2 Days!

PowerSight.com • sales@powersight.com • 1-925-444-7027



Lighting Your Way at Greater Heights



Appleton™ IHC LED Luminaire

The Appleton™ IHC LED Luminaire by Emerson is the ideal solution to deliver light from mounting heights of 50 to over 100 feet. With outputs up to 90,000 lumens, an IP66 marine and wet location rating, and an ambient temperature range of -40 °C (-40 °F) to 75 °C (167 °F), the IHC was designed to meet the demands of your harsh industrial environment and lighting requirements.

Learn more at: masteringled.com

APPLETON™

The Appleton logo is a trademark and a service mark of Emerson Electric Co. © 2021 Emerson Electric Co.



CONSIDER IT SOLVED™

Russelectric Offers Prime Power Systems

Automatic operation of on-site power generators to serve a facility's entire load

Russelectric, A Siemens Business, a leading manufacturer of power control systems and automatic transfer switches, offers its Prime Power Systems, which are used for automatic operation of on-site power generators to serve a facility's entire load. The Prime Power Systems are used as the primary

source of power to a facility. Generator paralleling controls provide active synchronization and soft loading control of the engine generators based on load demand.

All Russelectric Prime Power systems are UL listed, offer programmable logic controller (PLC) system controls,

POWER CONTROL SYSTEMS FOR:

- Emergency generator control
- Emergency generator control with load demand sensing
- Emergency generator control with utility paralleling
- Prime power
- Cogeneration generator control
- Low-voltage (600 volt) and medium-voltage (5 kV and 15 kV) applications

and are supervisory control and data acquisition (SCADA)-capable.

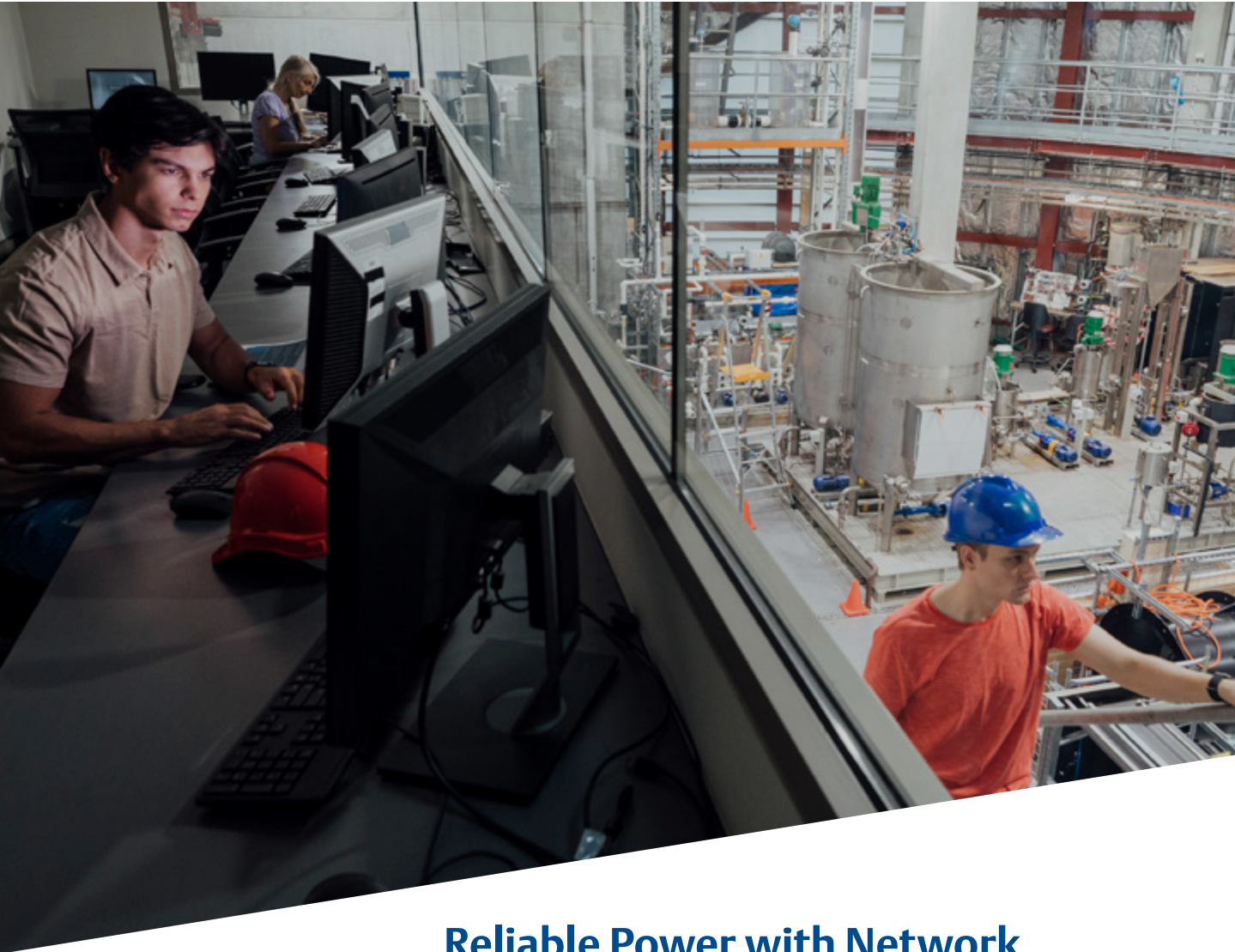
In prime power applications, engine generators are run in response to the connected load. If load increases to a predetermined level, the Russelectric Prime Power System automatically starts additional generators, synchronizes them to the generator bus, and shares the load with the running generators. If load decreases to a predetermined level, excess generators are automatically removed from the bus and shut down, returning them to automatic standby status.

For more information contact us at info@russelectric.com or 800 225-5250.



ABOUT RUSSELECTRIC

Founded in 1955, Russelectric®, A Siemens Business, provides high-integrity power control solutions for mission critical applications in the healthcare, information technology, telecommunication, water treatment, and renewable energy markets. The company maintains vertically integrated manufacturing facilities in Massachusetts and Oklahoma, where it designs and builds a full line of automatic transfer switches, switchgear, and controls. Russelectric products carry the longest and most comprehensive warranty in the industry and are backed by a team of expert factory-direct field service engineers. To learn more about Russelectric products and the company's commitment to customer satisfaction, visit www.russelectric.com, call (781) 749-6000, or email info@russelectric.com.



Reliable Power with Network Communications



SolaHD™ Communication Module (SCM) and SDN-D High Performance DIN Rail Series Power Supplies

Power interruptions and failures can be detrimental to critical plant equipment or processes resulting in increased downtime, plant shutdowns, production loss, and risk of safety and environmental incidents. By integrating the SolaHD™ Communication Module (SCM) and SDN-D High Performance DIN Rail Series Power Supplies by Emerson into plant equipment and processes, operators and service technicians have the ability to monitor diagnostic data, alarms, and events, maintaining critical process availability.

Learn More at: www.solahd.com

SOLAHD™

The Emerson logo is a trademark and a service mark of Emerson Electric Co. © 2023 Emerson Electric Co.



CONSIDER IT SOLVED™

Sonepar Joins IES as Champion Level Sustaining Member

The Illuminating Engineering Society (IES) is proud to welcome Sonepar as its newest Champion Level sustaining member company. Sonepar is the first electrical distributor with a Champion Level Sustaining Membership with IES, marking the company’s commitment to the development of lighting professionals.

IES Sustaining Membership is for companies, institutions, and other organizations regardless of staff size or operational budget. Five levels of membership are available, with Champion Level as the highest with maximum services and benefits provided by the IES for the company and its employees.

“Becoming a Champion Level sustaining member of IES strengthens our expertise and service level for the lighting and controls product category. With the content provided by IES, our associates get valuable ongoing education that allows us to serve our customers as lighting experts. We look forward to a strong relationship between Sonepar and IES,” stated Marc Hodges, Director Lighting Solutions at Sonepar USA.

“With the programs and tools provided by IES, our associates get



access to resources unmatched in the lighting industry. This investment demonstrates Sonepar’s commitment to career development for lighting professionals throughout our company,” added Bob Preston, Solutions Specialist – Lighting from Capital Electric, a Sonepar Company.

Sustaining Member benefits include access to education and the new Lighting Library®, discounted memberships and attendances to society level events and conferences, promotion of your company on our website, at our annual events, and in the award-winning LD+A magazine. In addition, a portion

of the Sustaining Membership dues are tax deductible in the United States.

“We are excited to welcome Sonepar as a Champion Level sustaining member,” stated Colleen Harper, CEO and Executive Director of the IES. “We look forward to working with them for years to come with mutual benefits for the Society and their company.”

The five Sustaining Membership levels (Contributor, Supporter, Benefactor, Ambassador and Champion) start at \$1,250 USD per year. Of the more than 300 Sustaining Member companies, Sonepar stands out as one of four Champion Level members. □

ABOUT THE ILLUMINATING ENGINEERING SOCIETY (IES)

Established in 1906, the Illuminating Engineering Society is the recognized technical and educational authority on illumination. Our mission is to improve the lighted environment by bringing together those with lighting knowledge and by translating that knowledge into actions that benefit the public. We provide a variety of professional development, publications, networking and educational opportunities to our membership of engineers, architects, designers, educators, students, contractors, distributors, utility personnel, manufacturers and scientists in nearly 60 countries. Through our American National Standards Institute (ANSI) accredited process, we publish and maintain the Lighting Library®, with over 100 standards written by subject matter experts in our technical committees. In all our efforts, we strive to improve life through quality of light. To learn more about us, visit www.ies.org.

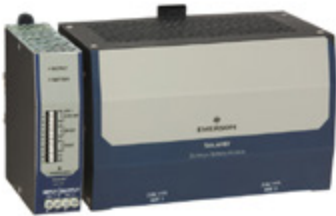


ABOUT SONEPAR

Sonepar is an independent family-owned company with global market leadership in B-to-B distribution of electrical products, solutions and related services. Through a dense network of 80 brands spanning 40 countries, the Group has an ambitious transformation agenda to become the first global B-to-B electrical distributor to provide a fully digitalized and synchronized omnichannel experience to all customers. Drawing on the skill and passion of its 44,000 associates, Sonepar had sales of \$33.1 billion in 2022.* For more information, visit www.sonepar.com.



Compact and Easy to Install DC UPS for Harsh Industrial Locations



Solahd™ SDU DC - B Series DIN Rail UPS

The Solahd™ SDU DC - B Series DIN Rail UPS by Emerson are perfect for mitigating power quality issues, minimizing loss of data and downtime.

The SDU DC - B UPS combines an industry leading compact design, wide operation temperature range -15 °C to +50 °C (+5 °F to +122 °F), enhanced communication and unique installation options to solve common application problems.

Learn more at: www.solahd.com

SOLAHD™

The Emerson logo is a trademark and a service mark of Emerson Electric Co. © 2021 Emerson Electric Co.



CONSIDER IT SOLVED™

MADE IN AMERICA, FOR AMERICA

At Electri-Flex, we are proud to do our part in rebuilding America by providing top-quality, domestically sourced conduit made right here in the U.S. Our industry-leading Liqueflex® flexible conduit line is second to none, offering options for virtually every application, from data and defense to transit, rail and bridges. And backed by more than 65 years of family ownership, we look after your business as if it were an extension of our own. Because we believe that America deserves the best.

Electri-Flex.
Rebuilding our infrastructure
at every turn.

DISTRIBUTORS NATIONWIDE

ALL PRODUCTS PROUDLY
MADE IN THE USA



electri-flex



ELECTRI-FLEX COMPANY

222 West Central Ave
Roselle, IL 60172-1994 USA

Toll-free phone (U.S.): (800) 323-6124
Phone: (630) 529-2920

www.electriflex.com

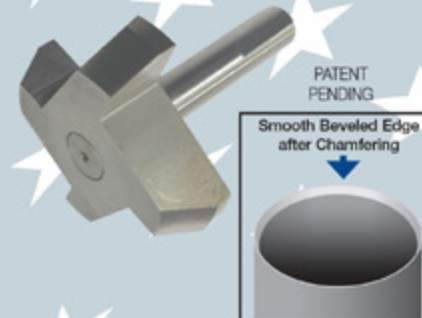


SPPRODUCTS, INC.
Productivity and value thru ideas
FOR SAFER BETTER FASTER JOBS



We're Proud to be the Electricians' Friend for Over 50 Years!

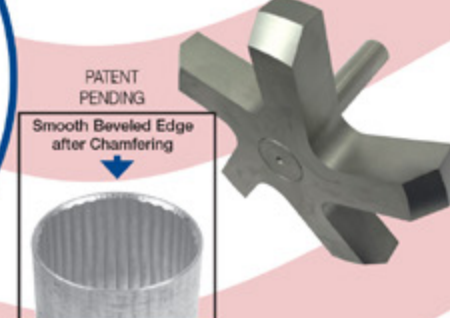
IP15a
Chamfer Bit
for PVC SCH 40/80



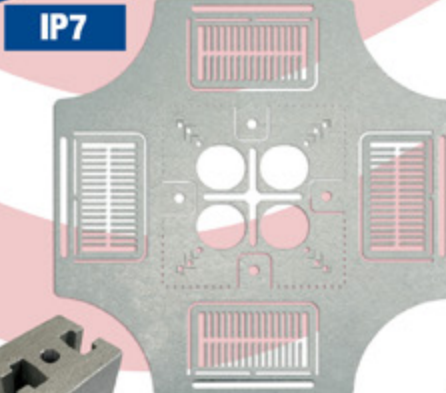
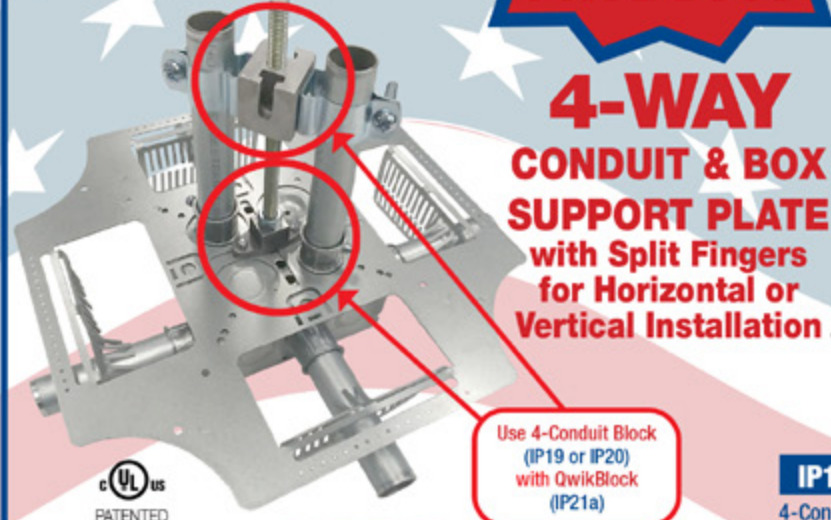
IP27b
Electro Post EP-10
Box Support Bracket



IP15b
Chamfer Bit
for Aluminum EMT



NEW
PRODUCTS



IP21a
QwikBlock
PATENT PENDING

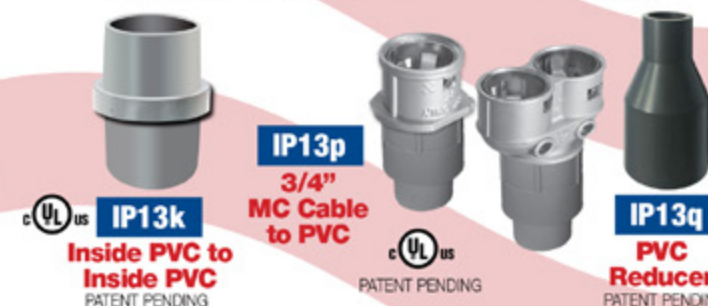
IP19/20
4-Conduit Block
PATENTED

PVC Running
Thread SCH 40/80
Up to 30" Long

IP3d



NEW Transition Fittings
Saves a Great Deal of Time Repairing Conduit
The Inside Diameter Remains the Same
Allows for Trouble Free Wire and Cable Pulls



Male Threaded
PVC Offset

IP3c

1/2" thru 3" Offset
for Conduit Sizes
1/2" thru 6"



Plus More Being Invented for **SAFER BETTER FASTER** Jobs . . . Call With Your Ideas!

SPProducts.com 800-233-8595 info@SPProducts.com

Klein Tools® Introduces New P100 Half-Mask Respirators for Respiratory Protection

Klein Tool, for professionals since 1857, introduces the new P100 Half-Mask Respirators, to provide protection against all particulate aerosols including solid and liquid particles such as dust, metal fumes and oil mist.

P100 Half-Mask Respirators (Cat. Nos. 60552 & 60553)

- NIOSH P1000 Rated
- Low profile, lightweight design for all-day comfort
- Simple push-in fit check mechanism for quick & easy face seal validation
- Adjustable straps with end clamp keep head strap tidy and comfortable all day
- Downward facing exhalation valve prevents safety glass fogging
- Available in two different sizes: Medium/Large and Small/Medium
- Replacement Filters (Cat. No. 60554) also sold separately (2-pack)

"Construction and other work sites can generate dust particles, metal fumes, mists and other respiratory hazards," says Chandler Duchaine, senior product manager at Klein Tools. "The P100 Half-Mask Respirators provide NIOSH rated protection to professionals working in dusty/particulate atmospheres, with a compact design to minimize interference with safety eyewear, and a simple push-in check mechanism for easy face seal validation."

For more information, visit
www.kleintools.com



Eaton's Wiring Devices Unveils Commercial Labor-Saving Modular Receptacles and Switches

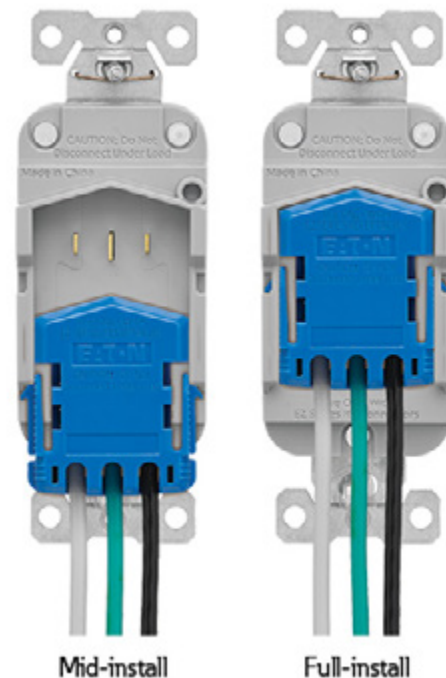
Designed to provide the most efficient way to wire receptacles and switches for large commercial projects, the Arrow Hart EZ Link™ modular devices reduce installation costs and timelines and allow for secure, aligned, and accurate installation faster than traditional wiring.

The heavy-duty EZ Link devices enable installers to wire a connector during rough-in and easily and quickly install the device at trim-out, saving time and skilled labor hours. Ideal for high-rise office buildings, hotels, and other large projects, the modular design makes replacements and future enhancements easy as well.

The unique sliding, arrow-shaped design allows the connector to slide and lock into place onto the back of the device, guided by rails for accurate alignment. Releasing wings provide an easy, one-handed release of the device, while offering two points of capture to stay securely attached to the device.

Additional features and benefits include:

- Arrow shaped connectors easily identify insertion direction, preventing incorrect installation.
- Slim profile allows more room in the electrical box for rapid installation.
- Wire relief slots allow sharp bending to easily push all the wires back into the box.
- Gripping ridges provide a secure grip for the installers.
- A dedicated labeling area adds convenience to meet special labeling needs.
- Heavy-Duty design provides ultimate durability for the most demanding environments.
- Devices meet all UL20 (switches) and UL498 (receptacles) applicable requirements and is FedSpec certified.



For more information, visit
www.Eaton.com/EZLink

KUIKBOX

MADE
IN THE
USA

"When using KUIKBOX, it changes how you think about electrical installations."

Cut the time and hassle of electrical installation by over 65% with KUIKBOX. Whether you're doing a commercial project or simply working at home, KUIKBOX can make the job easier, faster and more cost-effective.



Comes with two-pre-installed ground screws to accommodate an optional ground/lug bar

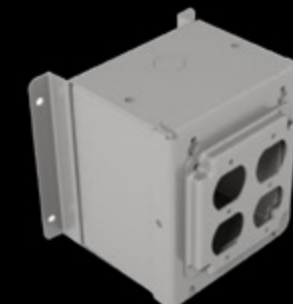


Includes brackets for installation on steel-lined walls



Any square cover can be installed on KUIKBOX

Optional dividers allow for multiple voltages in one KUIKBOX



KUIKBOX is perfect for making a clean and professional-looking electrical installation and allows for quick expansion and add-ons after the project is complete.

KUIKBOX Electrical Enclosure Systems are available in six spacious box sizes.



KUIKBOX is designed to be used with ANY generic electrical square cover.



2 Gang
4 Gang
6 Gang
8 Gang
10 Gang
12 Gang

HOME OF THE KUIKBOX

42906 Colony Road • Olivet, S. Dakota 57052
kuikbox@gmail.com • For more info, visit kuikbox.com

Evluma's New Roadway Luminaire, RoadMax RX3, Replaces 150-400W HID Cobraheads

Evluma crowns their versatile roadway product line with their largest LED roadway luminaire to date. The RoadMax RX3 is positioned to assist municipalities and utilities retire inefficient and maintenance-intensive legacy HID cobraheads on major roadways.

Evluma announces the release of the LED RoadMax RX3 roadway luminaire. The large, triple-light-engine RX3 is up to 50% more energy efficient than the 150-400W HID cobraheads it's positioned to replace.

The RX3 completes Evluma's RoadMax series of low-glare roadway luminaires. The release of the RX3 also kicks off a series of new features that will roll out over the entire product line, including 277-480VAC compatibility. The RoadMax RX3 is available in model wattages ranging from 120-300W. Optionally, an adjustable lumen output switch increases service efficiency by expanding each model wattage with an additional seven output settings.

Like the rest of the RoadMax luminaires, the RX3 is distinguished by its sophisticated, durable design and low-glare, precision optics. Multiple luminaire configurations for Type II, Type III, Type IV and Type V, all with zero-uplight (U0), are offered. Proven to further reduce glare, the RX3 is released with signature RoadMax secondary lenses. Innovative field-installable shields curtail light trespass. The large roadway luminaire can be ordered with a 7-pin socket for networked nodes and 20kV/10kA Extreme surge protection. Like all RoadMax, the RX3 can be customized to include Evluma's Photocontrol Failsafe, a patented technology that solves photocontrol failures on street and area lights.

The RoadMax RX2 spanning 70 – 220 watts was released in March of 2023 and the award-winning RX1 offered in 30-100 watts was released in March of 2022. "Color temperatures, efficacy targets, expanding specifications, adherence to RP-8-22 (IES) plus citizen feedback are just a few factors that can influence the choice of roadway luminaire. Overlapping wattages between each size luminaire (small, medium, large) allows for a variety of choices in efficacy (lm/W) and light output. It also affords additional flexibility if the goal is to stock fewer SKUs," stated Evluma Marketing Director, Cathleen Shattuck. "With a 10-year warranty and 20kV/10kA surge protection the RX3 crowns this robust line of roadway luminaires."



**For more information, visit
www.evluma.com**



M18 FUEL™ Overhead Rotary Hammer with Integrated Dust Extraction

The M18 FUEL™ Overhead Rotary Hammer with Integrated Dust Extraction is a new to world solution that delivers superior ergonomics for overhead drilling and simplified dust collection. The built-in dust extractor creates a lighter weight and more balanced design, while the new side handle design allows the operator to maintain better posture throughout the application for lower fatigue. AUTOSTOP™ Kickback protection offers enhanced safety for the operator by preventing over-rotation in a bind-up. The POWERSTATE™ Brushless motor provides the fastest drilling for small ceiling anchors and enough power to complete up to 5/8" holes in concrete.

**For more information, visit
www.milwaukeeetool.com**

Affordable test equipment for 2024



Spitfire - Buried Low Voltage Cable Fault Locator

- ◆ Accurate
- ◆ Easy to use
- ◆ High energy output
- ◆ Proven reliability
- ◆ Compact design
- ◆ Lightweight

Wayfind'r - Impulse cable tracer

- ◆ Accurate
- ◆ Easy to use
- ◆ Connects directly to energized cables
- ◆ Distinct signal for easy tracing
- ◆ Traces direct buried and cables in conduit
- ◆ Rugged, compact design

Impulse Phaser - Cable / phase system

- ◆ Accurately identifies cables in trenches, vaults, conduits and enclosures
- ◆ Accurately identifies phases in multi-conductor cables
- ◆ Identifies jacketed, shielded, cables, even in pipe
- ◆ Easy to understand and use



TIMCO INSTRUMENTS, LLC

Phone: (401) 539-7120 Fax: (401) 539-6018
www.timcoinstruments.com





SP PRODUCTS, INC.
Productivity and value thru ideas
FOR SAFER BETTER FASTER JOBS

2023 NECA
ShowStopper
WINNER

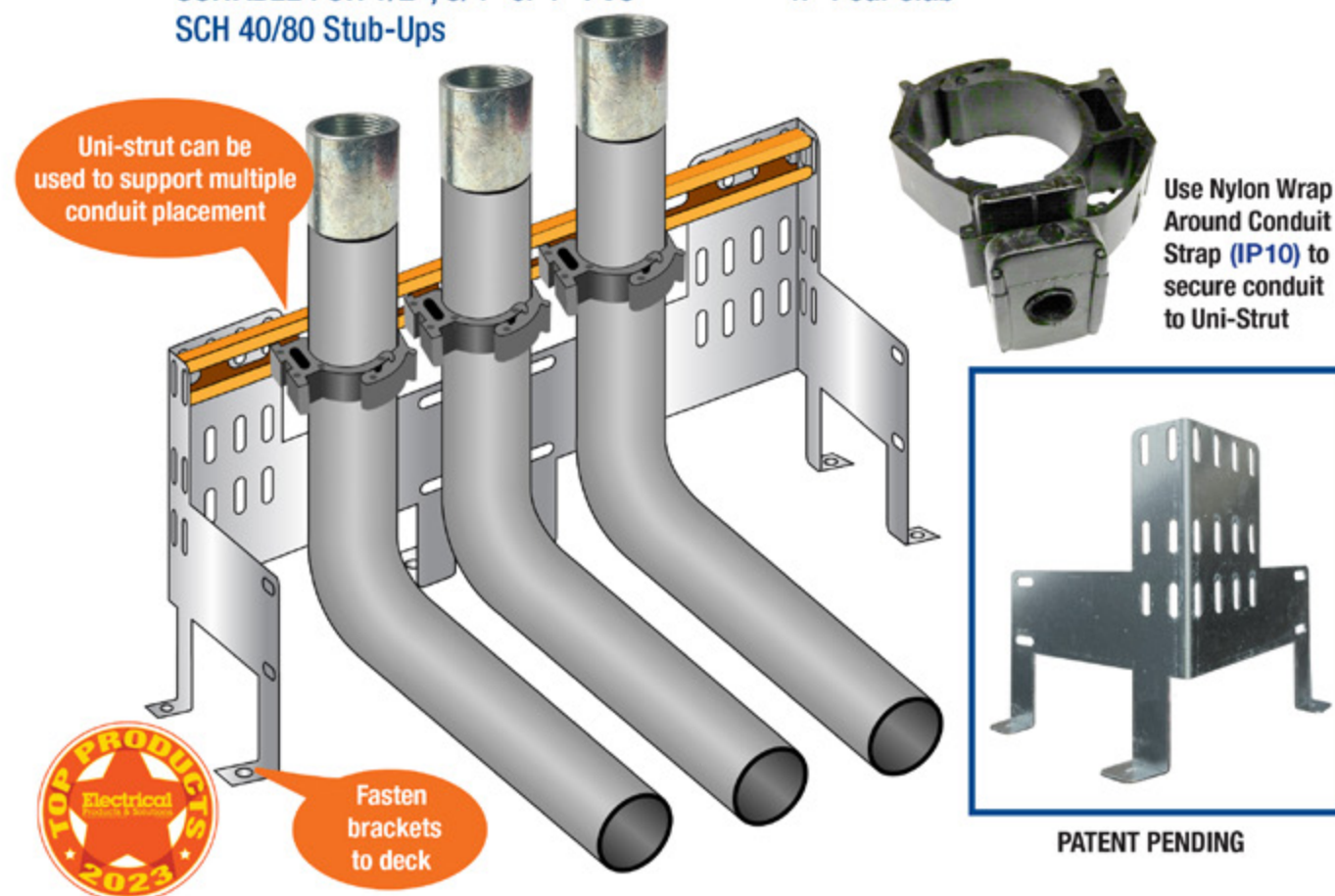


EZ Stub-Up SUPPORT BRACKET

- Support and secure multiple conduits and sizes with brackets and/or uni-strut at a single stub-up location
- Use nylon wrap around conduit straps, minerllacs, one-hole straps or Ty wraps to secure conduit to bracket or uni-strut
- 16 guage galvanized steel
- SUITABLE FOR 1/2", 3/4" or 1" PVC SCH 40/80 Stub-Ups

INSTALLATION:

1. Position bracket on deck before the concrete pour
2. Fasten bracket to deck
3. Secure conduit to bracket or uni-strut with nylon wrap around conduit straps, minerllacs, one-hole straps or Ty wraps
4. Pour slab



Perfect for Poured Precast Decks!

SP PRODUCTS, INC.
Productivity and value thru ideas



PATENT PENDING
PATENTED

LABELS APPLY TO PRODUCTS ONLY WHERE SHOWN ABOVE



730 Pratt Boulevard • Elk Grove Village, IL 60007
P: (847) 593-8595 • F: (847) 593-8629 • Toll-free (800) 233-8595
E: info@spproducts.com • www.spproducts.com

new
PRODUCTS

New Ratchet and Driver System from Klein Tools® Features 60 Versatile Bits

Klein Tools, for professionals since 1857, introduces the 64-Piece Precision Ratchet and Driver System, with 60 versatile bits, a micro-ratchet and a magnetic adjustable precision screwdriver to maximize access in tight and narrow spaces.

Precision Ratchet and Driver System, 64-Piece (Cat. No. 32787)

- 60 bits in one set:
 - 33 precision bits
 - 16 standard bits
 - 11 nut drivers
- Low-profile micro-ratchet to provide maximum access and extra torque
- Magnetic, adjustable 1/4-Inch / 3.5-mm bit holders for standard and precision bits
- Precision screwdriver Cushion-Grip™ handle with spin cap for precise control
- Case is designed to nest neatly within MODbox™ Toolboxes and on the MODbox™ case adapter side rail attachment

“Trade professionals need to always expect the unexpected, and we strive to provide ever-more efficient and compact solutions to equip them exactly for that,” says Tony Glatz, associate product manager at Klein Tools. “The Precision Ratchet and Driver System provides essential bits for both 1/4” and precision applications, bridging the gap between these two ‘drive’ mediums.”

**For more information, visit
www.kleintools.com**



Gray Tools Introduces Insulated Hex Bit Socket Set

Gray Tools introduces a 16-piece insulated hex bit socket set. Made in the U.S.A., the set features both SAE and metric sizes, contained in a convenient carrying case with a foam organizer. All pieces have dual-layer insulation, providing user protection up to 1,000 volts in a variety of electrical applications.

Gray's new 3/8" drive socket set (part no. 25016-I) includes seven SAE hex head sockets, ranging from 1/8" to 3/8", as well as seven metric hex head sockets from 4 to 10 mm. Also included in the set is an insulated 42-tooth round head ratchet and a 3-inch extension attachment. Each bit has its size clearly marked for easy identification. The sockets and accessories are neatly stored in a 5S dual-color foam organizer with sizes imprinted on the top layer. The foam tray fits perfectly in the durable carrying case with metal latches, which provides convenient transport to the jobsite and is compact enough to store inside a toolbox drawer.

Underneath two layers of protective insulation is the same Gray tools professionals have trusted since 1912. People who do extraordinary work for essential service providers and many other industrial facilities across North America trust the quality and dependability of Gray tools. Every piece in the set undergoes a rigorous multi-step insulation process to meet compliance with ASTM F1505 standards. When the process is completed, each tool is charged with 10,000 volts of energy for 180 seconds to ensure its insulation resists potential electric shock. Other tests are performed to verify the flame resistance and durability of the insulating material.

In addition to offering protection for up to 1,000 volts, the dual-colored insulation serves as a visual safety indicator. If the outer orange layer of insulation becomes damaged, an inner yellow layer alerts the user that the tool is no longer safe for use.

“As more vehicles and other equipment become electric powered, the demand for industrial-quality insulated tools increases as well. We're happy to meet that need through our growing line of insulated tools, including the new hex bit socket set,” said Dragos Baicoianu, Marketing Manager, Brand and Digital. “We're committed to supporting our customers through this transition to electric, using our expert tool knowledge and experience dating back to 1912.”

**For more information, visit
www.shopdynamictools.com**

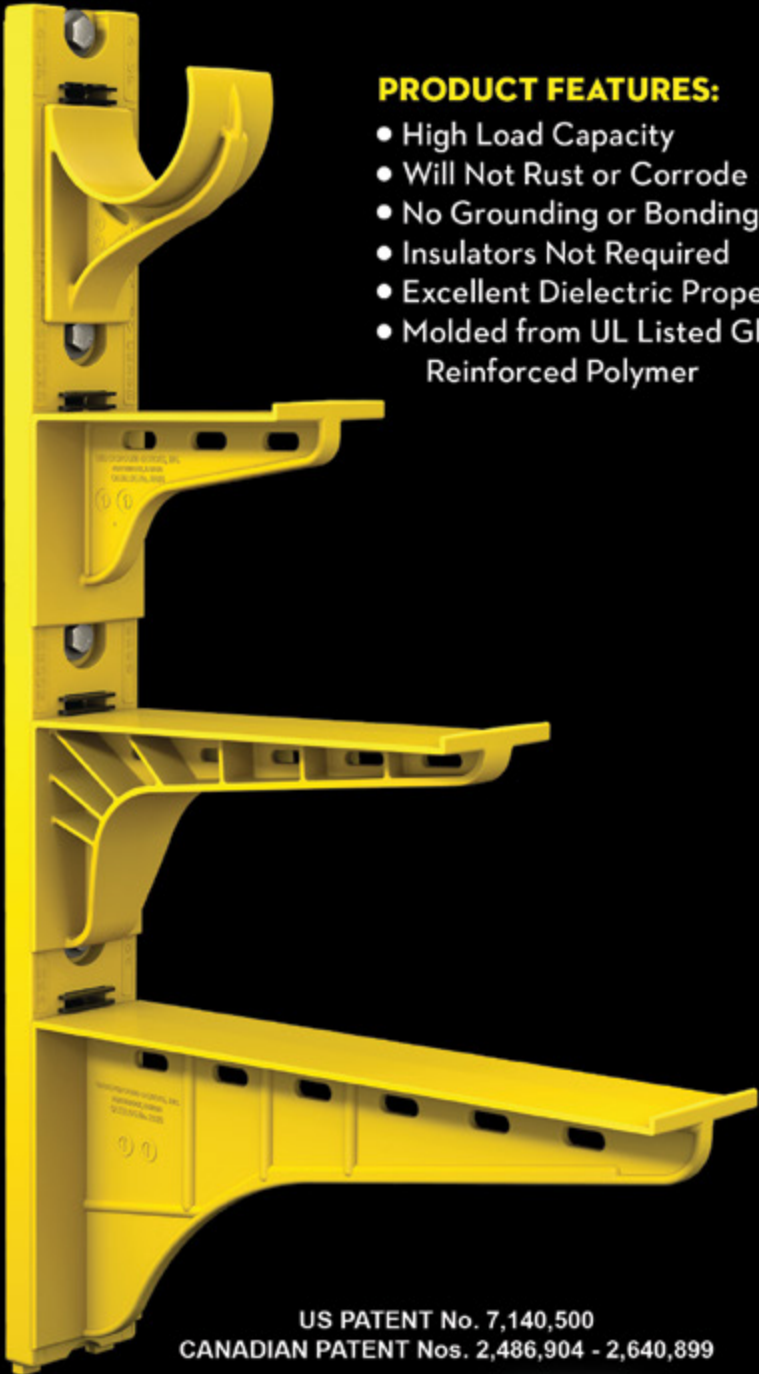
The Heavy Duty Nonmetallic CABLE RACK

For Power and Communications Manholes And Vaults



PRODUCT FEATURES:

- High Load Capacity
- Will Not Rust or Corrode
- No Grounding or Bonding
- Insulators Not Required
- Excellent Dielectric Properties
- Molded from UL Listed Glass Reinforced Polymer



US PATENT No. 7,140,500
CANADIAN PATENT Nos. 2,486,904 - 2,640,899



HDL Arm Lock shown with
RA04 Arm and CR36-B Stanchion



3HDS - 3" throat saddle shown with
a cable secured by cable ties.



RA08 - 8" arm shown with three
cables secured by cable ties.

UNDERGROUND DEVICES
INCORPORATED



420 ACADEMY DRIVE
NORTHBROOK, IL 60062
Phone: 847-205-9000 • Fax: 847-205-9004
Website: www.udevices.com

M18 FUEL™ Overhead Rotary Hammer with Integrated Dust Extraction

The M18 FUEL™ Overhead Rotary Hammer with Integrated Dust Extraction is a new to world solution that delivers superior ergonomics for overhead drilling and simplified dust collection. The built-in dust extractor creates a lighter weight and more balanced design, while the new side handle design allows the operator to maintain better posture throughout the application for lower fatigue. AUTOSTOP™ Kickback protection offers enhanced safety for the operator by preventing over-rotation in a bind-up. The POWERSTATE™ Brushless motor provides the fastest drilling for small ceiling anchors and enough power to complete up to 5/8" holes in concrete.

For more information, visit
www.milwaukee tool.com



Russelectric, A Siemens Business, Offers RTS-30 Series Automatic Transfer Switches for Hospitals and Healthcare Facilities

The most complete line of rugged 480 VAC 30-cycle and 3-cycle UL tested switches available

Russelectric, A Siemens Business, a leading manufacturer of power control systems and automatic transfer switches, announces the Russelectric RTS-30 Series of automatic transfer switches for hospitals, healthcare facilities and other critical facilities, the most rugged and complete line of 480 VAC 30-cycle and 3-cycle UL tested switches available in the market today. All Russelectric RTS-30 Series automatic transfer switches have been fully tested, listed, and labeled for 30-cycle and 3-cycle closing and withstand ratings under UL-1008. In addition, the RTS-30 meets all requirements for legally required standby systems for selective coordination.

The RTS-30 Series of transfer switches feature preloaded springs and an over-center mechanism driven by an electric operator for opening and closing the power contacts. During an open-transition transfer, the contact mechanism is securely locked in position until the over-center position is reached. The preloaded springs then instantaneously open the closed contacts (quick-break) and instantaneously close the open contacts (quick-make) with a momentary break in between. The quick-break feature provides for rapid full arc interruption, under maximum voltage and amperage, reducing contact erosion and increasing useful life.

Control components and wiring can be replaced without removing the RTS-30 transfer switch from its enclosure. The neatly arranged, front-connected, flame retardant, 600-volt SIS rated switchboard wiring simplifies electrical circuitry tracing. Heavy-duty control components and contacts ensure switching requirements are easily handled. All wiring connections are labeled with sleeve-type markers, easily visible from the front of the cabinet.

RTS-30 Series open-transition transfer switches are ideal for basic transfer applications and for high inductive load transfer applications. Featuring a quick-break, quick-make, high-speed transfer mechanism, they provide positive mechanical interlocking and simple electrical operators. The switches offer rapid arc quenching. The safe external manual operator provides the same quick-break, quick-make operation as an electrical operator. They are available in both 3- and 4-pole configurations and feature front accessible wiring.

Also available are RTS-30 Series closed-transition transfer switches, which offer rapid closed-transition retransfer to the preferred source and for testing – with zero power interruption. This switch provides high-speed quick-break, quick-make, open-transition transfer upon the loss of the preferred power source. These switches also feature simple electrical operators and rapid arc quenching. They are available in 2-, 3-, and 4-pole configurations and feature front accessible wiring.

For more information, visit
<https://www.siemens.com/us/en>



TO VISIT AN
ADVERTISER'S
WEBSITE, SIMPLY
CLICK THE QR CODE
OR COMPANY NAME
IN THEIR AD.

BONUS
FEATURE



Electrical
Products & Solutions™
The Purchasing Guide for Electrical Contractors
www.epsmag.net

advertiser
INDEX

This advertiser index is compiled as a courtesy to our readers. While every effort is made to provide a complete and accurate listing of companies and page numbers, the publisher is not responsible for errors. **Click the company name or page number to see their advertisement.**

Company	PG#	Company	PG#
APPLETON / EMERSON	13	POWERSIGHT / SUMMIT TECHNOLOGY INC	14
APPLETON / EMERSON	15	RANDL INDUSTRIES	5
CONDUIT REPAIR SYSTEMS	4	SOLAHD / EMERSON	17
ELECTRI- FLEX COMPANY	22	SOLAHD / EMERSON	21
iTOOLco	IFC	SP PRODUCTS INC	3
iTOOLco	IBC	SP PRODUCTS INC	19
KRENZ & COMPANY	32	SP PRODUCTS INC	26, 27
KUIKBOX	1	SP PRODUCTS INC	BC
KUIKBOX	23	TIMCO INSTRUMENTS, LLC	25
MILLER SAFETY CONSULTANTS, LTD	7	UNDERGROUND DEVICES	29
POWERSIGHT / SUMMIT TECHNOLOGY INC	11		

When it comes to transformer cooling fans, Krenz-Vent is the industry recognized gold standard. Our leadership position is earned through 80+ years of R&D plus our superior engineering and customer service. You can rest easy when you specify Krenz fans.

ENGINEERED TO COOL
There is no comparison.



KRENZ & COMPANY, INC.

KRENZVENT.COM • 262.255.2310 • KRENZ@KRENZVENT.COM

ALL THE INFORMATION YOU NEED IS JUST A CLICK AWAY AT **WWW.EPSMAG.NET**

Electrical Products & Solutions

Transition Couplings
PVC Bell End Adapter
Galvanized Rigid Conduit - 1/2" thru 6"

HOME ARTICLES NEWS VIDEO PRODUCTS SUBSCRIBE CONTACT

Warming Up to Electrical Heating Cables

WHAT'S NEW

Conduit Repair Systems, Inc.
The World Leader in Split Conduit Products

DMF Lighting Expands its M Series Commercial Collection with High Lumen Packages for Hospitality and Mix-Use Spaces

New Multi-Tester from Klein Tools Combines Core Electrical Products into One Model

RPS Launches SlimWave Filter To Safeguard Motor and Cables

CORDLESS CANNON 6K

iTOOLco.
WWW.iTOOLco.com | 865.670.3713

f i t y in

TOP PRODUCTS 2022
Electrical Products & Solutions

Speed, versatility, and performance are all yours with iTOOLco's Cordless Cannon 6K™. This portable 6,000 lb. puller is intuitively designed to handle all of your day-to-day wire pulls.

The built-in capstan switch automatically turns the puller on and off. Simply tug on the rope to start the pull and slack off the rope to shut it down. Delivers dynamic performance in remote locations or areas where power is not yet available.

SCAN ME





SPPRODUCTS, INC.

Productivity and value thru ideas
FOR SAFER BETTER FASTER JOBS



We're Proud to be the Electricians' Friend for Over 50 Years!

IP5

"The Original"

Enter Any KO on Both Sides of the Box



IP19/20

4-Conduit Block
PATENTED

IP21a

QwikBlock
PATENT PENDING

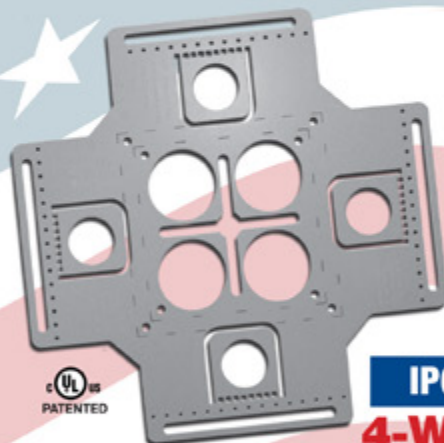
Use 4-Conduit Block (IP19 or IP20) with QwikBlock (IP21a)

IP6d

2-Way
with Split Fingers for Horizontal or Vertical Installation



Our Family of Conduit & Box Support Plates Saves Valuable Time & Money!



IP6

4-Way

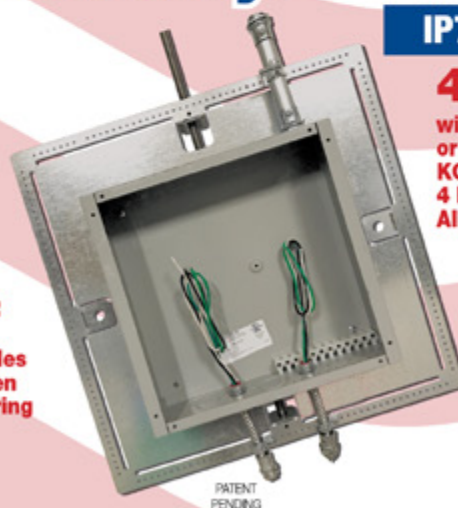
Enter Any KO on All 4 Sides of the Box Plus 4 Large Open KOs in Center Allows Entering Back of Box



IP6a

2-Way/Half

Enter Any KO on 1 or 2 Sides of the Box Plus Large Open KOs in Center Allows Entering Back of Box



PATENT PENDING

IP7

4-Way

with Split Fingers for Horizontal or Vertical Installation. Enter Any KO on All 4 Sides of the Box Plus 4 Large Open KOs in Center Allows Entering Back of Box.

IP8

Mount Horizontally or Vertically from One Single Support

20 x 20

Supports up to 12 x 12 J-Box

28 x 28

Supports up to 20 x 20 J-Box

MADE IN THE USA!

Plus More Being Invented for **SAFER BETTER FASTER** Jobs . . . Call With Your Ideas!

SPProducts.com **800-233-8595** info@SPProducts.com