

# Electrical

## Products & Solutions™

*The Purchasing Guide for Electrical Contractors*

MAY 2024

[www.epsmag.net](http://www.epsmag.net)

**OTEX** AR

## OTEX AR NEW PRODUCT LINE

*Lightweight Arc Rated PYRAD®  
suits by GORE-TEX Labs*



# ***iTOOLco.***

## **THE MVP20K**

**MORE POWER. NO COMPROMISES.**

865-670-3713 | [www.iTOOLco.com](http://www.iTOOLco.com)



Picking Up and Installing a KUIKBOX  
Is as easy as 1, 2, 3!

1



Grab a KUIKBOX

2



Pick Any Square Cover

# **KUIKBOX**

Electrical Enclosure System

3



Install in Minutes!

## Think Simpler. Design Better.



### *HOME OF THE KUIKBOX*

42906 Colony Road • Olivet, S. Dakota 57052  
[kuikbox@gmail.com](mailto:kuikbox@gmail.com) • For more info, visit [kuikbox.com](http://kuikbox.com)

**BUILT  
IN THE  
USA**





COMPANY PROFILE

**6 Protect Yourself**  
Miller Safety Consultants —  
*A Leader in Arc Flash Protection*

COVER STORY

**8 OTEX AR NEW PRODUCT LINE**  
*Lightweight Arc Rated PYRAD® suits by GORE-TEX LABS*  
BY VINCENT MILLER

FEATURE ARTICLE

**12 How to Select a Filter Fan Based on Application Conditions**  
*From electrical equipment to environmental considerations, here are expert tips for smart selection*  
BY LUCAS FAULKNER

DEPARTMENTS

**16** INDUSTRY NEWS  
**22** NEW PRODUCTS  
**32** AD INDEX

ON THE COVER

Photo courtesy of Miller Safety Consultants, Ltd.



**Electrical**  
**Products & Solutions™**  
The Purchasing Guide for Electrical Contractors [www.epsmag.net](http://www.epsmag.net)

**PUBLISHER**  
Danny J. Salchert

**OFFICE MANAGER**  
Anita Salchert

**CREATIVE DIRECTOR**  
Derek Gaylard

**CIRCULATION DIRECTOR**  
Pam Fulmer

**CONTRIBUTING WRITERS**  
Vincent Miller • Lucas Faulkner



**PRESIDENT**  
Danny J. Salchert

**EXECUTIVE AND  
ADVERTISING OFFICES**  
2009 Eagle Ridge Drive  
Birmingham, AL 35242  
**phone:** 205.981.4541  
[www.epsmag.net](http://www.epsmag.net)  
[danny@epsmag.net](mailto:danny@epsmag.net)

*Electrical Products & Solutions™* is published twelve times a year on a monthly basis by ABD Communications, Inc., 3591 Cahaba Beach Road, Birmingham, Alabama, 35242, USA. *Electrical Products & Solutions™* is distributed free to qualified subscribers. Non-qualified subscription rates are \$57.00 per year in the U.S. and Canada and \$84.00 per year for foreign subscribers (surface mail). U.S. Postage paid at Birmingham, Alabama and additional mailing offices. *Electrical Products & Solutions™* is distributed to qualified readers in the electrical contracting industry. Publisher is not liable for all content (including editorial and illustrations provided by advertisers) of advertisements published and does not accept responsibility for any claims made against the publisher. It is the advertiser's or agency's responsibility to obtain appropriate releases on any item or individuals pictured in an advertisement. Reproduction of this magazine in whole or in part is prohibited without prior written permission from the publisher.

**POSTMASTER:** Send address changes to  
ABD Communications, Inc., P.O. Box 382885  
Birmingham, Alabama 35238-2885

**FOLLOW US ON**



**SP PRODUCTS, INC.**  
*Productivity and value thru ideas*  
**FOR SAFER BETTER FASTER JOBS**



*We're Proud to be the Electricians' Friend for Over 50 Years!*

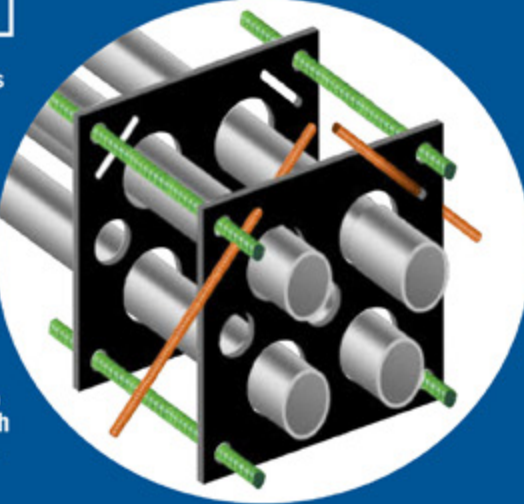
**Qwik Duct**  
**Safer Better Faster**

**HDPE CUSTOM TEMPLATES**  
*In Any Configuration Required*

**Save on  
Installation!**



**IP1**



**Assemble Conduit Above Trench-  
No Workers Below -  
Prevents Injuries and Deaths.**  
Also Allows Digging a Narrower Trench  
for Less: Excavation, Concrete, Slurry,  
Backfill & Shoring.

**IP3b**

Patent  
Pending



**PVC Offset**

Sizes 1/2" thru 6"  
Meets Flexible Mandrel  
Test Requirements

**Bore Spacers**

Sizes 1/2" thru 6"  
Roll assembled conduit into  
caissons and under  
obstructions

**IP2**



**IP13A-F**

**Conduit Transition Couplings**



**IP15**  
**End Bell  
Adapter**  
Schedule  
40/80 PVC

**Save Cost on the Rigid Nipple, Tape & Labor**  
**Use for Entire Job - Not Just for Repair**

**IP14a**  
**1 Piece  
Reaming Bit**  
1/2" thru 6"  
Schedule 40/80

*Plus More Being Invented for SAFER BETTER FASTER Jobs . . . Call With Your Ideas!*



**SPProducts.com 800-233-8595** [info@SPProducts.com](mailto:info@SPProducts.com)



# REPAIR CONDUIT IN A SNAP!

No Tape • No Plastic Straps • No Metallic Straps

## NO KIDDING!

*Designed especially for power, communications and fiber optics.*



**STEP 1**  
Remove damaged conduit



**STEP 2**  
Cut split duct conduit to fit



**STEP 3**  
Snap in place

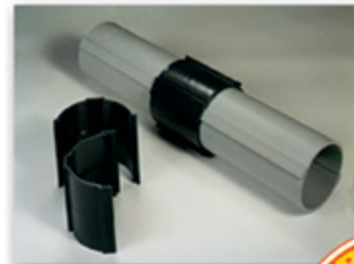
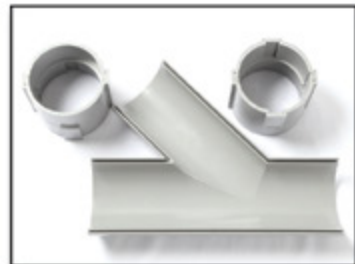
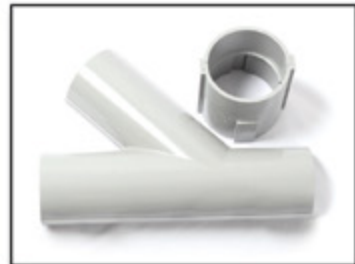


**STEP 4**  
Attach adapters



**STEP 5**  
Finish job in record time

***"The World Leader In Split Conduit Products"***



**Conduit Repair Systems, Inc.**  
The World Leader In Split Conduit Products



800.670.1804 • 435.673.8724 fax • crs@conduitrepair.com • www.conduitrepair.com

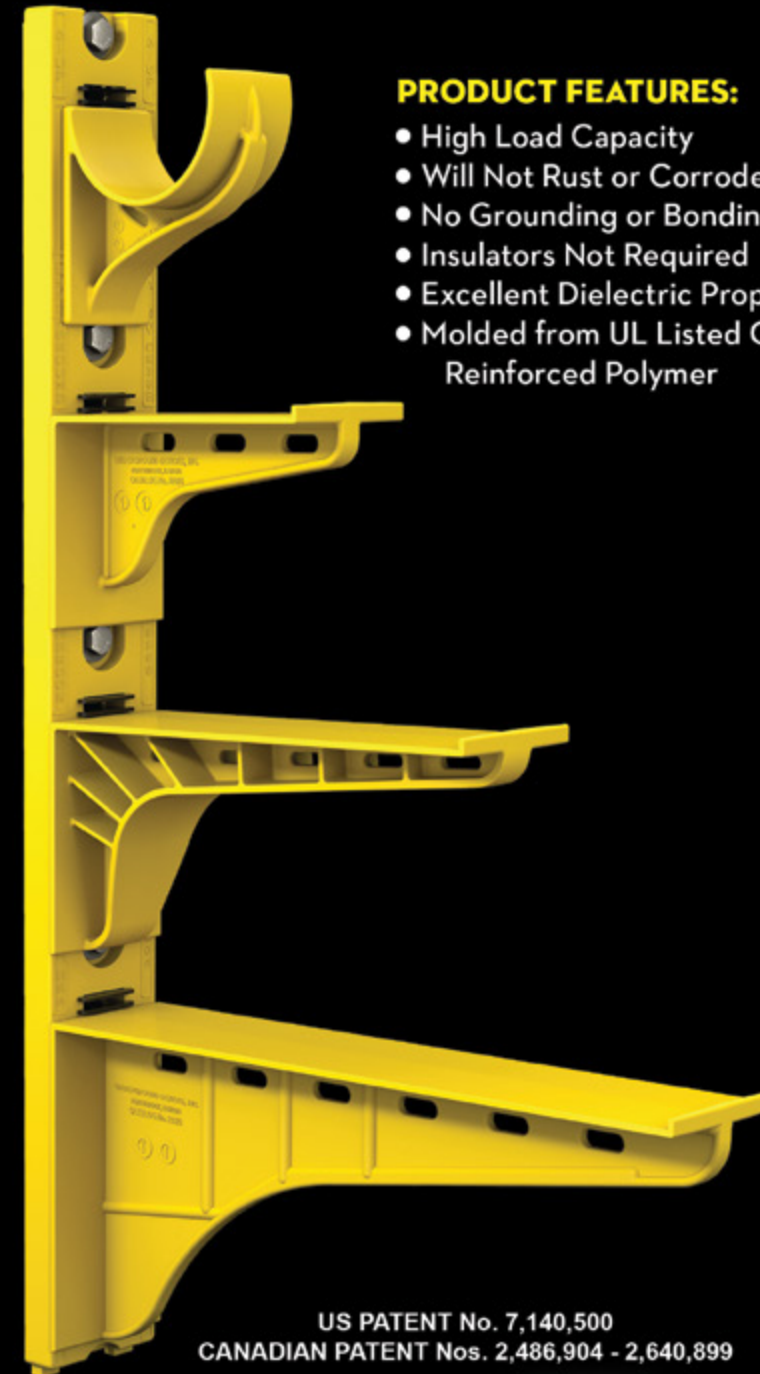
# The Heavy Duty Nonmetallic CABLE RACK

For Power and Communications Manholes And Vaults



### PRODUCT FEATURES:

- High Load Capacity
- Will Not Rust or Corrode
- No Grounding or Bonding
- Insulators Not Required
- Excellent Dielectric Properties
- Molded from UL Listed Glass Reinforced Polymer



US PATENT No. 7,140,500  
CANADIAN PATENT Nos. 2,486,904 - 2,640,899



HDL Arm Lock shown with  
RA04 Arm and CR36-B Stanchion



3HDS - 3" throat saddle shown with  
a cable secured by cable ties.



RA08 - 8" arm shown with three  
cables secured by cable ties.

**UNDERGROUND DEVICES**  
INCORPORATED



420 ACADEMY DRIVE  
NORTHBROOK, IL 60062  
Phone: 847-205-9000 • Fax: 847-205-9004  
Website: [www.udevices.com](http://www.udevices.com)



# Protect Yourself

## Miller Safety Consultants — A Leader in Arc Flash Protection

**Vince Miller started Miller Safety Consultants**, a veteran owned business in 1999. The goal of the business was to provide cost effective safety consulting, employee training such as: confined space entry, fall protection, electrical safety and provide sales of electrical shock and flash protective equipment and fall protection equipment to businesses in the Washington DC area.

Reliance Industries provided fall protection products and much of the sales and training was on behalf of the supplier. In 2000, the owner decided to retire from his business, and Vince decided to discontinue the fall protection line of his business and concentrate more in the electrical training and products.

Vince had been a distributor for Certified Insulated Products (CIP), a manufacturer of electrical insulated tools and electrical arc flash clothing manufactured by Otex in Rochester, New York. As a distributor, Vince provided sales through his internet website and much through relationships with electrical contractors. His training was a classroom environment and was provided directly to customers but he also taught as a sub-contractor for other safety consulting companies and the

Chesapeake Safety Council in Baltimore, Maryland. In 2005, Vince partnered with Vivid Learning Systems in Cascades, Washington to provide on-line training in safe work practices.

Training in electrical safe work practices is still provided locally in the Washington DC area and as a partner with an electrical engineering firm and online. The training is based on the Occupational Health and Safety Administration (OSHA) standards and the National Fire Protection Association (NFPA) 70E standard.

Miller Safety Consultants is now a distributor for Cementex USA, Burlington, New Jersey, for insulated tools and equipment and clothing from OTEX Protective, Rochester, New York.

The majority of his sales of products

are from the web-based store. Cementex is nationally known for their quality equipment. Otex Protective is becoming more known for their quality clothing. For years, they have manufactured their products under other provider labels. Vince chose to not create his clothing line, but to sell the manufacturer product.

Vince has worked with many electrical company employees to fine-tune the clothing to be more comfortable for the user. Working closely with the manufacturer, they have made slight changes in how the cloth pattern was modified to meet final production. An example is the lightweight 40 Calorie vented hood offered by Otex.

The material is of the latest technology. The vented assembly is constructed for balance on the back of the hardhat and the airflow is 27 CFM to prevent fogging of the face shield and provide cooling to the worker. It took over a year to develop the product with the user prior to having the hood "flash tested". This product is now standard issue with many electrical contractors.

Being a small business and having quality providers has resulted in satisfied customers for Miller Safety Consultants. Being a direct supplier for OTEX Protective, another small business means customized customer needs can be met. □

For more information, visit  
Miller Safety Consultants at:  
[www.electricalsafetysupply.com](http://www.electricalsafetysupply.com), email  
Vince at: [sales@millersafetyltd.com](mailto:sales@millersafetyltd.com).

**AUTHORIZED**  
**Cementex**  
**The Safety Tool Specialists**  
**DISTRIBUTOR**

Give Vince a call at  
**(703) 367-0404**



Deluxe Maintenance Tool Kit



Class O Glove Kit

# Protect yourself from "Arc Flash"

**ARC FLASH LIFT-FRONT HOOD WITH V<sup>12</sup> HIGH-VOLUME VENTILATOR**  
**Compact. Powerful. Reliable**

Our V<sup>12</sup> High-Volume Ventilator boasts an unexpectedly quiet, high output (35+ CFM) turbine fan to cool and circulate the ambient air within the hood. Fully protected beneath it's durable ABS shell and added fabric layering, the V<sup>12</sup> High-Volume Ventilator isn't just compliant, it's superior.



**40 CAL/CM2 ULTRALIGHT CLOTHING BY OTEX**

Our new dual-layer Ultralight clothing takes advantage of DuPont's® dedication to scientific advancement and Westex's® industry leading dependability. Weighing in 37% lighter than traditional HRC4 PPE, our Ultralight Clothing is the most innovative contender in the lightweight arena.

**HYBRID LAYERING**

Combined Fabric Weight: 14 oz

Outer Layer: DuPont® Protera  
Color: Navy

Inner Layer: Westex Ultrasoft  
Color: Safety Orange



CALL US TODAY  
**(703) 367-0404**

OR VISIT OUR ONLINE ELECTRICAL SAFETY EQUIPMENT STORE  
[www.electricalsafetysupply.com](http://www.electricalsafetysupply.com)



# OTEX AR NEW PRODUCT LINE

*Lightweight Arc Rated PYRAD® suits by GORE-TEX LABS*

BY VINCENT MILLER

**IN HONOR OF THE “ELECTRICAL SAFETY MONTH”**, OTEX AR, Rochester, NY is introducing their new product line. It is the next step in lightweight clothing and hood technology.

OTEX AR is introducing the new lightweight PYRAD® by GORE-TEX LABS single layer 40 cal/cm2 fabric into their existing product line. The new jackets and bib overalls are made from arc rated PYRAD® technology

by GORE-TEX LABS or from Gore’s advanced arc rated fabric – the first of its kind to achieve 40 cal/cm2 protection in a single ply. The cloth is extremely light and flexible which allows the user unrestricted movement. The days of

bulky and stiff arc rated PPE is a thing of the past!

The new lift front hood – called the Rise™ - has been redesigned to include the patented arc flash sensor, task light and battery pack for the ventilator unit. The arc flash sensor detects an arc flash and shuts the cooling unit off to help preserve the fresh air inside the hood, giving the user time to escape the toxic air. In addition, their cooling unit, powered by the mighty Milwaukee

*The new lift front hood – called the Rise™ - has been redesigned to include the patented arc flash sensor, task light and battery pack for the ventilator unit.*

**OTEX** AR



## 40cal PYRAD® Hood by GORE-TEX LABS

1. High-Volume Ventilator with ArcSense Interrupter™
  - Patented ArcSense Interrupter™ shuts off airflow after an arc flash, preventing further inhalation of manganese fumes
  - 30 CFM blower fan
  - Snap-in design, removable in seconds
2. Ergonomic hood design allows for full rotation and movement
3. 1:1 Balance: Perfectly balanced back-to-front
4. Paulson face shields and brackets
5. Hood Handle for easy removal or transport
6. LED Head Lamp ready





M12 lithium-ion battery pack, provides fresh air for up to 6.5 hours. Quickly swap the battery and you're back to work. **BONUS:** Use the built-in adapter to power any 5V device or charge your phone.

OTEX AR has been a leader in lightweight electrical rated clothing since the Hybrid Series (also sold under the name UltraLight) that they introduced in 2013. This product was a game changer for the electrical industry. The hybrid "Ultra-Light" jacket and bib overalls uses a Protera outer layer and Indura inner liner. This was a great improvement over the "standard" multi-layer clothing design.

OTEX AR may even be the largest PPE manufacturer you've never heard of.

OTEX AR manufactures for many of the leading PPE brands through private label. Ultimately, OTEX AR is a hood technology company. Their focus on developing state-of-the-art cooling and safety technology has led to multiple patents and increased end user safety. It is the only hood unit that incorporates the patented arc-sensing technology. Safety of the employee and maintaining a safe breathing area is their priority.

***At OTEX AR and Miller Safety Consultants, we are always working with our clients to better their work environment by listening to their needs, evaluating the risks and hazards and working with them to provide the necessary protection for the job task.***

The vented hood was designed with the patented "arc sensor" to disable the fan operation which allowed the user a fresh air environment to exit the work area. The ventilation system options included a standard battery or a rechargeable Milwaukee battery for longer run-time use.

A Milwaukee M12 battery or the new rechargeable battery is offered (no more replacing batteries) and a sensor operated fan speed controller has been incorporated, resulting in longer operation by reducing the current draw on the battery. This battery and operating sensor are offered in both the PYRAD® suit by GORE-TEX LABS

and the hybrid models

At OTEX AR and Miller Safety Consultants, we are always working with our clients to better their work environment by listening to their needs, evaluating the risks and hazards and working with them to provide the necessary protection for the job task. New product development requires that we perform a risk analysis of the hazards, knowing that providing a simple change as a face shield can cause other issues to arise. We strive to be that safety product that an electrical worker can depend on and not worry that it may not save them from injury.

In conclusion, our advanced hood

safety features are far above others in the market. Our service is excellent in providing you the products and repair when needed. Each piece of clothing is custom made upon your order in Rochester, NY – in the USA! As a veteran owned business, I'm proud to be part of development and the ability to offer it. You can get more information by visiting our website at [www.electricalsafety.com](http://www.electricalsafety.com) or contacting me at (703)367-0404. □

***Vincent Miller is the owner of Miller Safety Consultants, Ltd and has been doing business in the Washington DC metropolitan area since 1999.***

**TO VISIT AN ADVERTISER'S WEBSITE,  
SIMPLY CLICK THE QR CODE OR  
COMPANY NAME IN THEIR AD.**



**BONUS  
FEATURE**

**Electrical  
Products & Solutions**  
The Proven Way to Electrical Solutions  
[www.electrical.com](http://www.electrical.com)





# How to Select a Filter Fan Based on Application Conditions

*From electrical equipment to environmental considerations, here are expert tips for smart selection*

BY **LUCAS FAULKNER**, SOLUTIONS ENGINEER, PFANNENBERG USA

**What are filter fans?**

Filter fans protect electrical enclosures from external environmental damage. From heat control to mitigating the ingress of liquid and solid objects, filter fans provide another layer of protection for the electrical equipment housed within enclosures. Filter fans protect critical equipment by reducing thermal load and filtering out airborne particles larger than 5 microns. The dual fan and filter composition keeps electrical equipment running at optimal temperatures while mitigating the amount of dust and other particulate matter from causing buildup and damage.

When selecting a filter fan for an enclosure, it’s important to consider the application’s heat load, optimal temperature, and environmental conditions in which it will be operating. Environmental considerations are particularly important for outdoor enclosures, as rain, snow, ice, and sunlight all pose risks to electrical equipment.

**Challenges for Outdoor Applications**

Filter fans are necessary for a wide range of outdoor electrical equipment. Some applications, however, require

intentionality and extra consideration when choosing the appropriate filter fan. These include irrigation pump panels, water and waste water, lighting control boxes for traffic signals or fields and stadiums, outdoor communication and information technology structures, energy storage and charging systems (such as in electric vehicles), and transportation systems, including bridges, toll stations, and electrical rail equipment.

When properly designed and integrated, outdoor filter fans can provide an energy efficient solution for heat load maintenance while also



## Create a More Productive Environment with Retrofit Solutions

The Appleton™ Retromaster LED Series by Emerson is designed to upgrade outdated legacy lighting fixtures to LED to improve operational life and lower maintenance costs. Safely illuminate Class I, Division 2 locations with models providing up to 5000 lumen output in a compact footprint. With dual lumen outputs, the Retromaster LED provides a tailored retrofit solution for your facility.

**Learn More at: [www.masteringled.com](http://www.masteringled.com)**



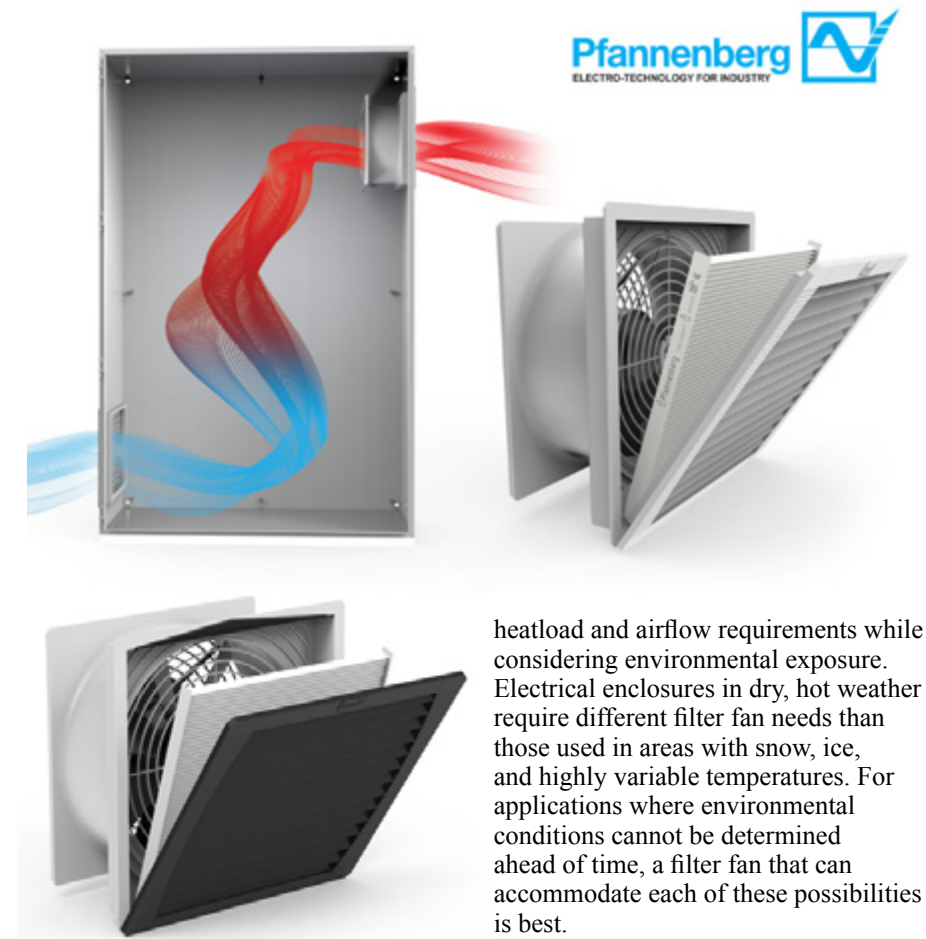
*Appleton™ Retromaster LED Series Luminaires*

**APPLETON™**

The Emerson logo is a trademark and a service mark of Emerson Electric Co. © 2024 Emerson Electric Co.







protecting enclosures from dust, ice, water, and sunlight. However, many filter fans on the market do not effectively protect critical electrical equipment. When improperly designed, filter fans can be subject to ice and dust buildup or damage from UV radiation and rainwater. These conditions can cause short circuiting within the enclosure. While there are workarounds for water infiltration, such as adding a rain hood, these additional steps increase space requirements and initial investment costs.

Tips for Selecting the Correct Filter Fan

Given these challenges, there are some tips to keep in mind when selecting a filter fan for an outdoor electrical enclosure.

Consider heatload and environment

Selecting an outdoor filter fan begins with determining the application's

heatload and airflow requirements while considering environmental exposure. Electrical enclosures in dry, hot weather require different filter fan needs than those used in areas with snow, ice, and highly variable temperatures. For applications where environmental conditions cannot be determined ahead of time, a filter fan that can accommodate each of these possibilities is best.

While determining application needs, it is beneficial to consult with an expert to help determine specific risk factors. An expert can help with considerations around which airborne particulates are present and if they are corrosive, as well as what ambient temperatures can be expected and how direct or indirect sunlight can affect operating temperatures.

The Pfannenberg Outdoor Rated Filterfan® (NEMA 3R rated) is designed for outdoor weather where direct sunlight and extreme weather, like rain and ice formation, are important factors. This filter fan utilizes UV-resistant plastics to prevent premature degradation from direct sunlight. Additionally, the filter fan's design protects against the ingress of falling dirt, rain, sleet, snow, and even external ice formation.

Weigh maintenance needs

Filter fans generally require little maintenance outside of regular filter

replacement. However, it is crucial to change the filter as specified by the manufacturer as filter clogs reduce airflow, causing extra strain on the fan and increasing the potential for overheating.

Well-designed filter inserts, including the filter for Pfannenberg's Outdoor Rated Filterfan® described above, provide longer service life. Pfannenberg's fluted filter-mat enables longer mean time between maintenance, delivering three times longer service life than standard designs. It accomplishes this with its increased dust holding capacity. As a result, the need for service is reduced, saving maintenance time, costs, and stress, which is especially helpful for electrical enclosures located in remote areas.

Balance protection, airflow, and initial investment costs

Filter fans for outdoor applications require a design that balances airflow optimization with low initial investment. A filter design that minimizes maintenance needs should also ensure unrestricted airflow throughout the fan's service life. However, it must do so without compromising on water and dust protection capabilities. Combining a filter that fits these needs with a filter fan housing design that does not require metal rain hoods, achieves an excellent balance of protection, airflow management, and minimizing upfront costs.

Conclusion

Filter fans are critical for protecting electrical equipment from overheating, water, and airborne debris so the equipment can run safely and efficiently. In outdoor environments, this task is particularly challenging. Finding a filter fan suitable for outdoor environments without significant drawbacks requires careful research. By considering heatload, environmental conditions, and maintenance needs before selecting a filter fan, it is possible to keep costs low. In applications ranging from pump panels and lighting control boxes to communication technology and energy storage systems, well-designed filter fans keep outdoor electrical equipment functional and safe. □



Extend Luminaire Life While Reducing Energy Consumption

The Appleton™ Mercmaster™ Connect LED by Emerson is designed to illuminate hazardous and harsh industrial locations with integrated motion and illuminance sensors. Paired with Emerson's Plantweb Insight Connected Lighting Application, operators have access to lighting usage data and sustainability analytics.

The Mercmaster Connect LED provides facility managers with continuous monitoring of their LED lighting with real-time insights gained into sustainability goals, diagnostics and lumen levels from any remote location at dramatically lower costs as compared to wired alternatives, with faster installation time and minimal disruption to plant operations.

Learn more at: [masteringled.com](https://masteringled.com)



Appleton™ Mercmaster™ Connect LED

APPLETON™

The Emerson logo is a trademark and a service mark of Emerson Electric Co. © 2021 Emerson Electric Co.

EMERSON

CONSIDER IT SOLVED™



# Electri-Flex Announces New Regional Sales Manager

ELECTRI-FLEX COMPANY, Roselle, IL, announces the hiring of Cameron Crooks for the role of Regional Sales Manager. Cameron comes to Electri-Flex with 13 years of industry experience serving a variety of roles in the wire, cable, and conduit space.

“We are excited to have Cameron join the Electri-Flex team, working with our great manufacturer rep groups and distributor partner on the East Coast,” stated Brock Klein, Director of Sales & Marketing.



Cameron currently resides in Texas but plans to relocate to the East Coast, serving as a Regional Sales Manager for this area. In this role, he will work with a network of top manufacturer representatives to sell and market Liquatite® products, while also maintaining distributor relationships, and ensuring customer expectations are exceeded.

To meet the entire Electri-Flex Executive, Sales, and Customer Service teams, visit <https://www.electriflex.com/about/meet-the-team/>. □

## ABOUT ELECTRI-FLEX COMPANY

Electri-Flex Company, a leader in electrical conduit design and manufacture for nearly 70 years, produces Liquatite®, the most diverse line of liquidtight flexible electrical conduit in the industry. The company offers custom design, engineering, quality assurance, and testing capabilities. For more information on Electri-Flex Company, call (630) 529-2920 or (800) 323-6174; fax: (630) 529-0482; e-mail: [mktg@electriflex.com](mailto:mktg@electriflex.com); visit: [www.electriflex.com](http://www.electriflex.com); or write: 222 West Central Avenue, Roselle, IL, 60172-1994.



# Hy-Brid Lifts Announces Director of Sales for South-Central United States

Hy-Brid Lifts, an industry leader in aerial lift equipment, announces Gary Coke as director of sales covering the south-central United States. Coke’s responsibilities include providing customer support as well as continuing the growth and channel development of the Hy-Brid Lifts line of low-level scissor lifts.

“I am excited to join this team and look forward to the opportunity to work with past and future customers. Coming from equipment manufacturing, I understand the importance of quality equipment and customer service backed by a solid service department,” said Coke. “After meeting the Hy-Brid Lifts team and seeing all of the new products in the pipeline, it’s no surprise that this company is continuing to grow, and I look forward to being a part of that growth.”

Coke brings 19 years of industry experience to his new role, largely

derived from his time in equipment manufacturing with SkyJack. He spent a majority of his career in sales with a strong emphasis on customer relationships and going above and beyond for every customer.

“The entire Hy-Brid Lifts team is excited to have Gary on board to serve the south-central United States. Gary has a wealth of sales and rental industry knowledge that will strengthen our ability to serve our customers,” said Dave Wanta, Custom Equipment LLC vice president of sales. “Gary Coke is a valuable addition to the team, and we look forward to the contributions that he will provide for our company’s continued growth.”

For more information: Hy-Brid Lifts, 2647 Highway 175, Richfield, Wis. 53076; 262-644-1300; fax 262-644-1320; [sales@hybridlifts.com](mailto:sales@hybridlifts.com); [www.hybridlifts.com](http://www.hybridlifts.com). □



Hy-Brid Lifts welcomes Gary Coke as director of sales for the south-central United States.

# KUIKBOX

MADE  
IN THE  
USA

“When using KUIKBOX, it changes how you think about electrical installations.”

Cut the time and hassle of electrical installation by over 65% with KUIKBOX. Whether you’re doing a commercial project or simply working at home, KUIKBOX can make the job easier, faster and more cost-effective.



Comes with two-pre-installed ground screws to accommodate an optional ground/lug bar



VS



Includes brackets for installation on steel-lined walls



Any square cover can be installed on KUIKBOX

Optional dividers allow for multiple voltages in one KUIKBOX



KUIKBOX is perfect for making a clean and professional-looking electrical installation and allows for quick expansion and add-ons after the project is complete.

KUIKBOX Electrical Enclosure Systems are available in six spacious box sizes.



KUIKBOX is designed to be used with ANY generic electrical square cover.



2 Gang  
4 Gang  
6 Gang  
8 Gang  
10 Gang  
12 Gang

## HOME OF THE KUIKBOX

42906 Colony Road • Olivet, S. Dakota 57052  
[kuikbox@gmail.com](mailto:kuikbox@gmail.com) • For more info, visit [kuikbox.com](http://kuikbox.com)



# DMF Lighting Welcomes Ellie Doherty As New Western Regional Sales Manager

*Lighting specialist in the custom integration channel  
joins the DMF sales team*

DMF Lighting, the leader in modular downlighting in the custom integration channel, today announced the addition of Ellie Doherty as the new Western Regional Sales Manager on the DMF sales team.

Passionate about lighting design, lighting fixtures, and lighting control engineering, Doherty's goal is to utilize her expertise in intelligent lighting to make lighting easy and exciting for dealers. She is a dynamic, success-driven, and highly motivated professional with extensive experience in all facets of specification and engineering lighting design layouts. Ellie has completed HTSA's Lighting Levels I, II, and III courses after earning the American Lighting Association's Lighting Specialist certification. Her experience includes extensive interaction with the design-build community; presenting to architects, builders, and interior designers; and working with homeowners to deliver luxury lighting solutions.

"We are delighted to welcome Ellie to our sales team," commented Mike Libman, National Sales Director, Residential Systems, DMF Lighting. "Her professionalism,



positive attitude, and commitment to excellence are the perfect complement to our organization's track record of amazing growth and success. Ellie shares the same sense of responsibility and leadership qualities required to

maximize sales-related objectives for DMF's portfolio of award-winning products and solutions."

Doherty's career highlights include her most recent responsibilities as Director of Sales for the Lighting Division at Powerfull Systems, a Los Angeles-based custom integration firm contributing to exponential growth in the lighting category. Previously, she held the position of Automated Lighting and Shades Specialist with Doherty Design Group and TriPhase Technologies in Indianapolis following her success in the position as a sales representative for the Lutron Electronics' Serena Shades team.

"I am excited to share my 10-plus years of experience directing the lighting divisions for two of the most successful top integrators in the country, who have maximized the opportunity to expand their business model by embracing the lighting category as a means to better serve their clients and make a positive impact on the bottom line," said Doherty. "DMF Lighting provides the industry with exceptional products and unmatched service and a commitment to innovation that I am proud to be a part of." □

## ABOUT DMF LIGHTING

DMF brings a creative approach to lighting and offers industry-leading technology that sets the bar for performance, quality, and flexibility. Our in-house research and development team designs products that provide exceptional aesthetics and are modular, which allows our lights to adapt easily to project changes. DMF award-winning LED lights produce accurate color rendering, smooth dimming and have low power consumption. They complement and enhance how a room looks and feels without sacrificing energy efficiency. At DMF, we understand that light is more than illumination; light is what makes a space beautiful, useful, and ultimately, enjoyable. Learn more at [www.dmfLuxury.com](http://www.dmfLuxury.com).



**MADE IN USA**

# SP PRODUCTS, INC.

*Productivity and value thru ideas*

## FOR SAFER BETTER FASTER JOBS

*We're Proud to be the Electricians' Friend for Over 50 Years!*

**IP15a**

**Chamfer Bit**  
for PVC SCH 40/80

PATENT PENDING

Smooth Beveled Edge after Chamfering

**IP27b**

**Electro Post EP-10**  
Box Support Bracket

Mounts on all standard stud widths of 2-1/2", 3-5/8" or 6"

PATENT PENDING

**IP15b**

**Chamfer Bit**  
for Aluminum EMT

PATENT PENDING

Smooth Beveled Edge after Chamfering

## NEW PRODUCTS

**IP7**

**4-WAY CONDUIT & BOX SUPPORT PLATE**  
with Split Fingers for Horizontal or Vertical Installation

Use 4-Conduit Block (IP19 or IP20) with QwikBlock (IP21a)

UL PATENTED

**IP21a**

**QwikBlock**

PATENT PENDING

**IP19/20**

**4-Conduit Block**

PATENTED

**PVC Running Thread SCH 40/80 Up to 30" Long**

PATENT PENDING

**IP3d**

**NEW Transition Fittings**

**Saves a Great Deal of Time Repairing Conduit**

**The Inside Diameter Remains the Same**

**Allows for Trouble Free Wire and Cable Pulls**

**IP13k**

**Inside PVC to Inside PVC**

PATENT PENDING

**IP13p**

**3/4" MC Cable to PVC**

PATENT PENDING

**IP13q**

**PVC Reducer**

PATENT PENDING

**Male Threaded PVC Offset**

**IP3c**

1/2" thru 3" Offset for Conduit Sizes 1/2" thru 6"

PATENT PENDING

*Plus More Being Invented for SAFER BETTER FASTER Jobs . . . Call With Your Ideas!*

**SPProducts.com 800-233-8595 info@SPProducts.com**



# Comalli Electric, Inc. Expands TEGG Service to Vermont and Western Massachusetts

ABM, a leading provider of integrated facility services, infrastructure solutions, and parking management, recently announced Comalli Electric, Inc., with offices in Pittsfield, Massachusetts, has signed an agreement to join the TEGG franchise network. Comalli Electric is a leading full-service electrical solutions provider for commercial and industrial facilities. TEGG is a franchise brand of ABM Franchising Group, LLC, a subsidiary of ABM.

“Comalli Electric’s record of growth shows a commitment to providing services that businesses need as technology evolves,” said Kelly Pnacek, Vice President of ABM Franchising Group. “ABM Franchising Group is proud to welcome Comalli Electric to our franchise network and support them in merging TEGG’s proven electrical asset management with their company’s current electrical service offerings to provide enhanced solutions for clients.”

Established in 1981 under the leadership of Dave Comalli, Comalli Electric has grown from a single crew of traditional electrical contractors to six divisions of over 150 full-time professionals, serving a diverse array of industries, with a specialty in providing tailored solutions for healthcare facilities. In addition to electrical design, installation, and maintenance services, Comalli Electric has expanded



to include energy solutions, such as solar installations, LED upgrades and electrical vehicle charging services, and a technology division focused on security and structured cabling systems.

“When we heard about TEGG and what it had to offer, we knew that it was what we were looking for,” said Mark Lauria, Chief Operations Officer of Comalli Electric, Inc. “Once we met with ABM Franchising Group’s team it was clear that together we could form a winning partnership. By following the TEGG system, we can not only help

our existing customers satisfy the new requirements under NFPA 70B, making their facilities safer and more reliable, but we can reach new customers as well, expanding our base.”

ABM Franchising Group offers a portfolio of franchise networks that deliver electrical and mechanical services and preventive maintenance solutions to commercial and industrial buildings. ABM Franchising Group consists of two franchise brands: TEGG and Linc Service. Comalli Electric, Inc., will operate under the TEGG franchise brand. □

## ABOUT ABM

ABM (NYSE: ABM) is one of the world’s largest providers of facility services and solutions. A driving force for a cleaner, healthier and more sustainable world, ABM provides essential services and forward-looking performance solutions that improve the spaces and places that matter most. From curbside to rooftop, ABM’s comprehensive services include janitorial, engineering, parking, electrical and lighting, energy and electric vehicle charging infrastructure, HVAC and mechanical, landscape and turf, and mission critical solutions. ABM serves a wide range of industries—from commercial office buildings to universities, airports, hospitals, data centers, manufacturing plants and distribution centers, entertainment venues and more. Founded in 1909, ABM serves over 20,000 clients, with annualized revenue approaching \$8 billion and more than 100,000 team members in 350+ offices throughout the United States, United Kingdom, Republic of Ireland and other international locations. For more information, visit [www.abm.com](http://www.abm.com).



**RANDL**  
INDUSTRIES, INC.

**Install Peace of Mind!**

First there was 4 square...  
and now the **REVOLUTIONARY 5 Square® Box!!**

You’ve struggled with 4 Square boxes for years - you know how small, cramped and time consuming they are. Finally, there is a solution that allows you the space you have always needed.

The **5 Square®** Boxes (5" x 5" x 2-7/8") provide up to 88 in<sup>3</sup> of interior volume which more than doubles that of most existing boxes on the market.

Create a robust and unrivaled infrastructure for the life of your facility with the **5 Square®** Products!

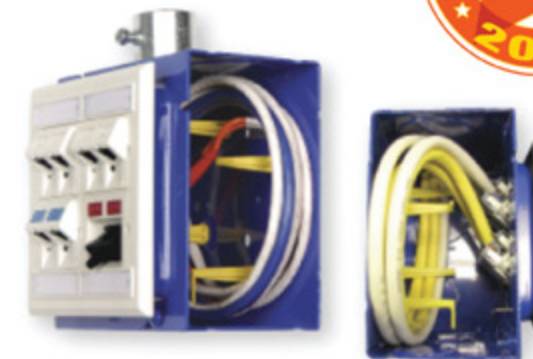


### Fire Signal



- TWICE THE VOLUME AS MOST BOXES
- SAVE LABOR...INCREASE PROFITS
- ELIMINATES TROUBLESHOOTING TIME AND COST
- FULLY UPGRADEABLE SYSTEM
- SPECIFIED BY ENGINEERING FIRMS, HOSPITALS, UNIVERSITIES & GOVERNMENT AGENCIES
- AVAILABLE IN ZINC OR RED

### Telecommunications



- INTEGRAL CABLE MANAGEMENT
- SAVE LABOR...INCREASE PROFITS
- FACILITATES MIN. BEND RADIUS REQUIREMENTS
- SUPPORTS CURRENT AND EVOLVING SYSTEMS
- SUPPORTS PoE PLUS
- SPECIFIED BY ENGINEERING FIRMS, HOSPITALS, UNIVERSITIES & GOVERNMENT AGENCIES

**RANDL**  
INDUSTRIES, INC.

P: 509.340.0050 • F: 509.340.0051

See our line of telecom & fire signal boxes at: [www.RANDL-INC.com](http://www.RANDL-INC.com)

*Making Communications & Fire Protection More Reliable & Cost-Effective!*

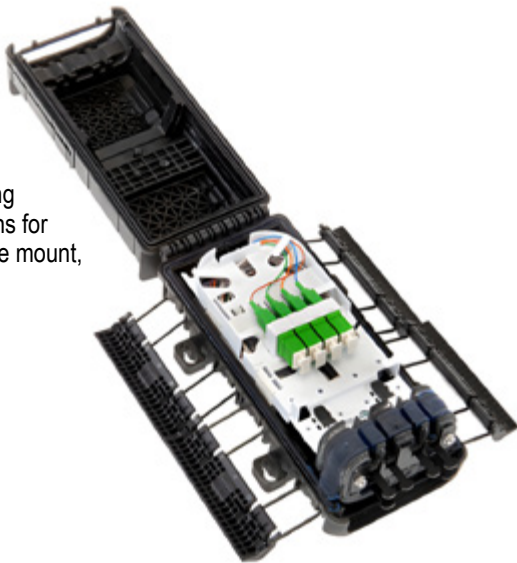


**LYNN™ Announces HyperDropGEL™ IP68-Rated Patch Panel & Splicing Enclosure**

*Now Available and Ideal for Pole Mount, Wall Mount, Aerial Suspension & Direct Burial Applications, the All-Plastic Housing & Gel-Based Sealing System Ensures a Long Service Life in a Variety of Conditions and Waterproof Performance in Underground & Aboveground Installs for Round & Flat Drop Construction Cables*

LYNN™, a leading brand of custom fiber optic and copper cable assemblies from NSI, is proud to announce the launch its new HyperDropGEL™ IP68-rated patch and splicing enclosure (p/n HDPAS-GEL-E-4). Now available, HyperDropGEL secures and manages fiber optic connections in a variety of environments.

“HyperDropGEL’s all-plastic housing is made from a glass-filled polypropylene blend with UV inhibitors to ensure a long service life in a variety of conditions,” explained Charles Hoskins, V.P. of Product Development. “Its unique gel-based sealing system ensures waterproof performance in underground and aboveground installations for round and flat drop construction cables. The HyperDropGEL™ securely installs in pole mount, wall mount, aerial suspension and direct burial applications.”



Additional HyperDropGEL features and included accessories:

- Ideal for splitting a trunk or distribution cable in almost all environments
- Easy-to-open design with water-tight latching
- Includes easy-to-see fiber splicing tray and splice sleeves
- Compatible with fiber splice connections and fiber couplers
- PTFE tubes
- Wall mounting screws; port plugs; insulating foam; cable ties
- SC/APC adapters (HDPAS-GEL-SA1-P4 and -S4 only)
- 1-meter pigtail (HDPAS-GEL-SA1-P4 only)
- 1x4 PLC splitter (HDPAS-GEL-SA1-S4 only)

**For more information, visit  
[www.thinklynn.com](http://www.thinklynn.com)**

**Legrand Announces 50A Turnlok Plugs and Connectors**

The 50A Turnlok Plugs and Connectors offer a faster, safer, and more reliable solution for installing and securing connections, making them perfect for challenging environments and tight deadlines. This not only boosts productivity but also cuts down on labor costs in temporary power applications.



Key features & benefits of the 50A Turnlok Plugs and Connectors Include:

- Adjustable Cord Clamp: Located outside the back body for greater flexibility to accommodate a wider range of cord sizes 8AWG-4AWG. Clamp screws are on the same plane for faster installation. Longer screws are included to adjust for larger cables.
- Same-Plane Hex Head Terminations: Hex head termination design for faster, easier and safer terminations that allow more torque to be applied without the risk of harmful screwdriver slips. All termination screws on the same plane for a more accurate and streamlined installation that saves you precious time on the job.
- Industrial-Strength Brass Alloy Plug Blades and Connector Contacts: Resist heat rise and provide excellent conductivity.
- Nylon 66 Shell Material: Durable impact and corrosion-resistant material that ensures high performance even in the toughest environments.

- External Cord Grips: New design provides visible assurance of safe and proper cord retention.
- Integral Flexible Rubber Cord Grommet: Conforms to and seals around SO cord to provide ample protection from oils, water or chips entering the wiring chamber.

**For more information, visit  
[www.legrand.com](http://www.legrand.com)**

**In stock in  
Everett, WA**

**Large  
Inventory**



**SILTEC®**

**Stainless Steel Cable Trays**



**[www.siltec.us](http://www.siltec.us)**

**For more information:**

**(+1) 425.328.1006**

**[siltec@siltec.us](mailto:siltec@siltec.us)**

**11604 Airport Rd, Ste. D100, Everett, WA 98204**



Total Electrical Solutions: DEWALT Expands Electrical Trade Portfolio to Empower the Trades Through Enhanced Productivity

- DEWALT announces 2024 electrical innovation offering pros full workflow solutions focused on productivity, safety and convenience
- New tools include the DEWALT 20V MAX\* Hydraulic Knockout Tool, 20V MAX\* XR® Brushless Cordless Mid-Size Bandsaw and 20V MAX\* XR® Brushless Cordless Dual-Trigger Bandsaw

DEWALT, a Stanley Black & Decker (NYSE: SWK) brand and leader in total jobsite solutions, today unveiled several new tools for the electrical trade furthering its mission to provide total workflow solutions for trades professionals. Innovation in the category includes the 20V MAX\* Hydraulic Knockout Tool (DCE600), 20V MAX\* XR® Brushless Cordless Mid-Size Bandsaw (DCS378) and 20V MAX\* XR® Brushless Cordless Dual-Trigger Bandsaw (DCS379).

“DEWALT is hyper-focused on bringing cutting-edge solutions to the trades to enable seamless workflow as pros move from phase to phase on the job,” said Derek Stevenson, Product Manager, Stanley Black & Decker. “From punching holes in enclosures to cutting conduit and strut, our latest tools for the electrical trade join more than 300 products in the DEWALT 20V MAX\* line and are supported by DEWALT’s suite of technology, software, and anchors and fasteners giving users a total solution that optimizes end-to-end productivity.”

20V MAX\* Hydraulic Knockout Tool

The DEWALT 20V MAX\* Hydraulic Knockout Tool (DCE600) delivers up to 11 tons of force\*\* output to perform heavy-duty applications in a lightweight design. To maximize precision in punch alignment, the knockout dies contain embedded magnets which securely attach to mild steel. The tool punches split slugs ranging from 1/2 in. to 2 in. for ease of use in disassembling the system once the knockout is complete. Additionally, the tool’s inline design, 180° rotating head, and ability to set up the punch and die system without the weight of the tool provides versatility in the knockout process flow.

Other features include a bright LED ring to help illuminate the work area, a shoulder strap and connection ring for portability, as well as a Tool Connect™ Chip pocket to connect with the Tool Connect™ Site Manager app for seamless inventory tracking (chip sold separately). The tool also features Crimp Connect® software, an onboard intelligence system that provides users detailed reports of work completed, tool calibration and service history.

\* Maximum initial battery voltage (measured without a workload) is 20 volts. Nominal voltage is 18.

For more information, visit  
[www.dewalt.com/electrical-solutions](http://www.dewalt.com/electrical-solutions)



EPR Kit

The EPR Repair Kit offers a solution for repairing broken or damaged PVC conduit and ducts, providing contractors and electricians with a quick and reliable way to restore functionality. With a unique interlocking joint design, the kit’s two half-shell pieces seamlessly close around the installed wire and cable, ensuring a water-tight seal. With easy assembly using standard PVC solvent cement, the EPR Kits efficiently repair various lengths and types of pipes. When used with the appropriate adapter, these innovative repair kits are compatible with Rigid PVC and DB-II, making them versatile for various applications. Additionally, the EPR Kits boast enhanced resistance to UV light, ensuring long-lasting durability even in outdoor environments.

For more information, visit  
[www.lpexna.com](http://www.lpexna.com)



# RHINO

## SWITCHBOARD MATS

### FUSEBOX SAFETY MAT™

*Rhino Switchboard Mats For The "If" in Life.*

Easily carried to job or construction sites, **Fusebox Safety Mat™** by Rhino provides portable insulation when working in close proximity to exposed energized equipment. around substations, transformers, switches, electrical panels, or high-voltage equipment. **Fusebox Safety Mat™** should be used in any area where Health and safety risk assessment shows a possibility of high-voltage shock.

*Safety Focused. Results Driven*

Rubber-insulating gloves, insulated hand tools, and switchboard-insulating mats are vital components of a successful PPE system. All should be used in conjunction with engineering safeguards and associated work practices.

*Quality You Can Count On*

Tested to ASTM D178/ANSI J6.7 specifications with certification printed on the back.

<b>Extreme-Duty Series Class 4</b> 1/2" thick Corrugated Surface Test Voltage 50,000 VAC Proof Test 40,000 VAC Recommended 36,000 VAC	All are tested to ASTM D178/ANSI J6.7 specifications with certification printed on the back. Two sizes available 2ft X 3ft and 3ft X 3ft, Two thicknesses 1/2" and 1/4"	<b>Heavy-Duty Series Class 2</b> 1/4" thick Diamond Surface Test Voltage 30,000 VAC Proof Test 20,000 VAC Recommended 17,000 VAC
---	---	--



Available at Electrical and Safety Supply Houses and Home Depot online or Contact us at 713-228-5543 / [Info@rhinomats.com](mailto:Info@rhinomats.com)  
[www.rhinoswitchboardmats.com](http://www.rhinoswitchboardmats.com)





**SP PRODUCTS, INC.**  
Productivity and value thru ideas  
**FOR SAFER BETTER FASTER JOBS**

2023 NECA  
**ShowStopper**  
WINNER

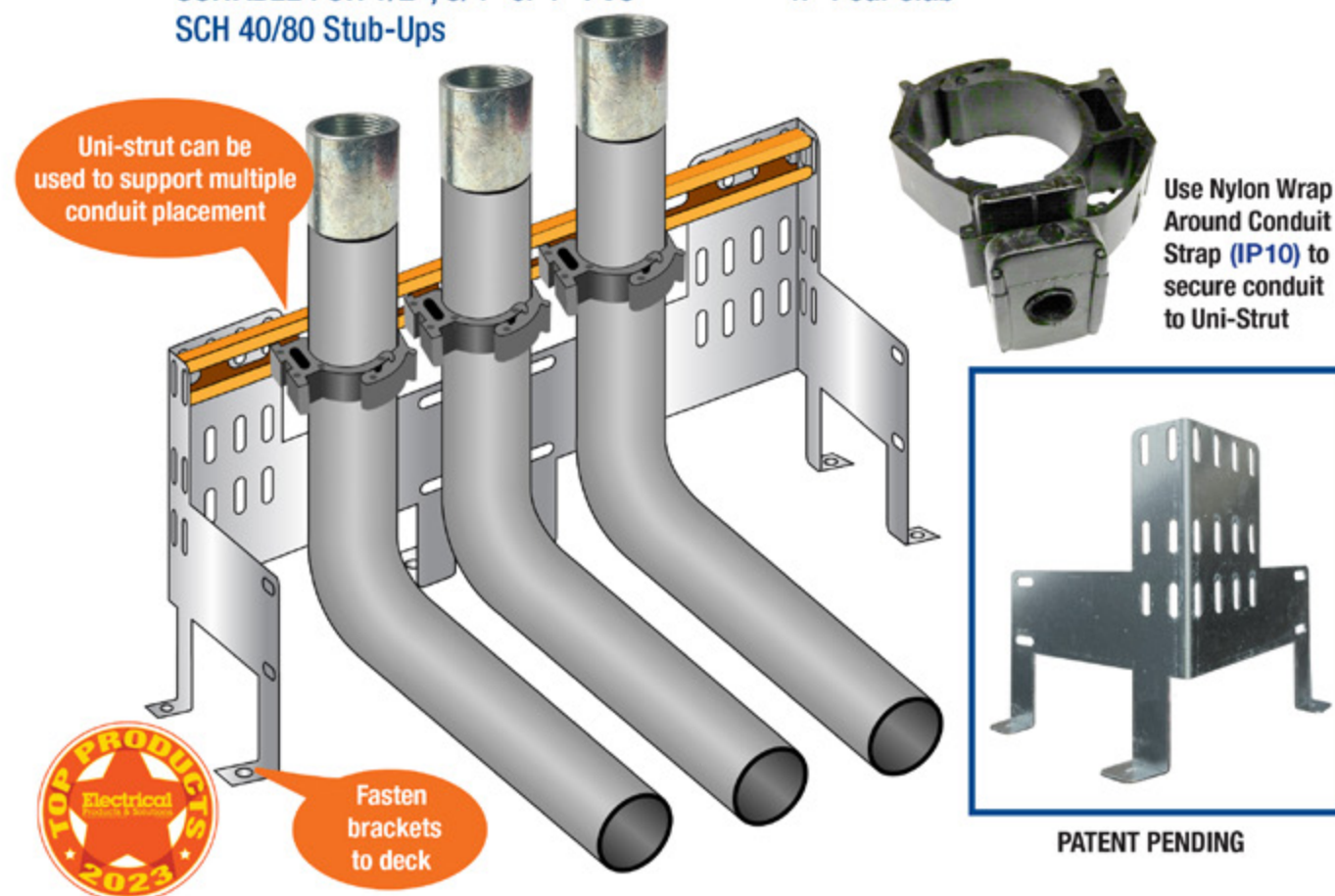


## EZ Stub-Up SUPPORT BRACKET

- Support and secure multiple conduits and sizes with brackets and/or uni-strut at a single stub-up location
- Use nylon wrap around conduit straps, minerllacs, one-hole straps or Ty wraps to secure conduit to bracket or uni-strut
- 16 guage galvanized steel
- SUITABLE FOR 1/2", 3/4" or 1" PVC SCH 40/80 Stub-Ups

### INSTALLATION:

1. Position bracket on deck before the concrete pour
2. Fasten bracket to deck
3. Secure conduit to bracket or uni-strut with nylon wrap around conduit straps, minerllacs, one-hole straps or Ty wraps
4. Pour slab



**Perfect for Poured Precast Decks!**

**SP PRODUCTS, INC.**  
Productivity and value thru ideas



PATENT PENDING  
PATENTED

LABELS APPLY TO PRODUCTS ONLY WHERE SHOWN ABOVE



730 Pratt Boulevard • Elk Grove Village, IL 60007  
P: (847) 593-8595 • F: (847) 593-8629 • Toll-free (800) 233-8595  
E: [info@spproducts.com](mailto:info@spproducts.com) • [www.spproducts.com](http://www.spproducts.com)



**new**  
PRODUCTS

**Milwaukee® Delivers Top Power, Speed, and Durability for the Toughest Jobs**

Adding to their circular saw lineup, Milwaukee Tool announces the new M18 FUEL™ 6-½" Circular Saw, offering class leading performance, delivering general contractor up to 20% more power and up to 40% faster cut speed.

As the fastest cutting circular saw in its' class, Milwaukee's new solution features an advanced POWERSTATE™ Brushless Motor that spins the blade at 6,000 RPM, while maintaining high speeds underload even in demanding applications. The circular saw features REDLINK PLUS™ Electronics, ensuring maximum tool performance and protection from overload, overheating, or over discharge. When paired with Milwaukee's M18 REDLITHIUM HIGH OUTPUT™ XC6.0 Battery, the saw delivers up to 300cuts per charge.

The M18 FUEL™ 6-½" Circular Saw was designed for the professional carpenter, remodeler and general contractor to provide a broad application range for increased productivity. For versatility in application, this saw allows professional users to cut through dimensional lumber, sheet goods and engineered wood and deliver rip, cross, miter, and bevel cuts. For enhanced productivity, the M18 FUEL™ 6-½" Circular Saw has positive bevel detents and a new-to-world depth detent.

Designed for improved mobility on the jobsite, the M18 FUEL™ 6-½" Circular Saw supplies improved ergonomics and touch points for ease of use to the professional user. Weighing in at 6.1lbs (bare tool), the circular saw provides the best power to weight ratio in its class and superior balance with enhanced handle geometry. Delivering increased user experience with upgraded touch points, such as an arbor lock which allows easy blade changes and depth and bevel adjustment levers for the most accurate cuts. Additional features include electric blade brake, LED work light, hang hook, and all-magnesium guards and shoes.

Milwaukee is committed to improving productivity by providing performance-driven and trade-focused solutions so users can perform an entire day's work on one battery system. The M18 FUEL™ 6-½" Circular Saw is fully compatible with the entire M18™ line, now offering more than 250 solutions.

\*M18 FUEL™ is engineered for the most demanding tradesmen in the world. Delivering unrivaled performance, all M18 FUEL™ products feature three Milwaukee®-exclusive innovations—The POWERSTATE™ Brushless Motor, REDLITHIUM™ Battery Pack and REDLINK PLUS™ Intelligence Hardware and Software—that deliver unmatched power, run-time and durability on the jobsite. Simply put, M18 FUEL™ tools are the most powerful 18V cordless tools in their class.



**For more information, visit  
[www.milwaukeetool.com](http://www.milwaukeetool.com)**

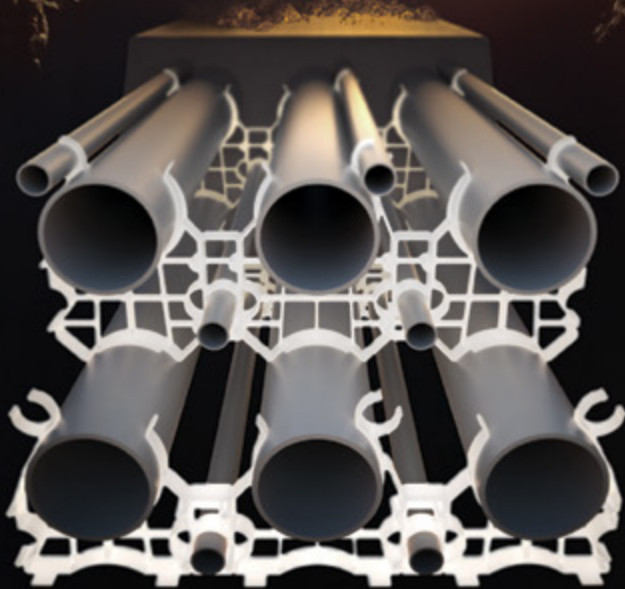


**RefrigiWear® Men's FleetStride® Plus Sneaker**

The RefrigiWear® Men's FleetStride® Plus Sneaker is a reliable companion for constant movement and harsh environments. Engineered with the BOA® Fit System, these safety sneakers provide a secure, micro-adjustable fit that lasts all day. Featuring waterproof construction and an aluminum safety toe, they ensure stability and protection in ever-changing conditions. With reflective accents for visibility, VitaComfort® anti-fatigue technology, and EVA+ Anti-Slip soles, these sneakers prioritize comfort and safety. Plus, the HYDRY® waterproofing system and rubber heel plate offer added durability.

**For more information, visit  
[www.refrigiwear.com](http://www.refrigiwear.com)**

THE SECRET TO  
**UNDERGROUND  
POWER  
TRANSMISSION**



OUR WUNPEECE TRANSMISSION SPACERS REDEFINE THE INDUSTRY STANDARD FOR UNDERGROUND POWER TRANSMISSION INSTALLATIONS. WITH PRECISION ENGINEERING AND UNMATCHED QUALITY,

JOIN THE RANKS OF INDUSTRY LEADERS WHO TRUST UNDERGROUND DEVICES FOR THEIR POWER TRANSMISSION NEEDS.



**VISIT [WWW.UDEVICES.COM](http://WWW.UDEVICES.COM)**

AND EXPERIENCE THE FUTURE OF UNDERGROUND POWER INSTALLATION



## Troffer Retrofit Kit - G2

TRK Series - Controls Ready

MaxLite's Enhanced Series Troffer Kit with Controls Ready feature is a cost-effective way to switch to LED technology. The kit can be easily installed in most existing troffers in less than 15 minutes. With its advanced "UniGlo" optics that provides uniform brightness across the lens, this product gives a smooth glare free illumination for high end hospitality, commercial and retail applications.

- 1x4' 2x2' and 2x4' Sizes
- CCT selectable 3500/4000/5000K
- Wattage selectable on all models
- Lumen output 2,000 - 5,160
- L70 of 100,000 hours
- DLC Standard Listed
- 10-year standard warranty

**For more information, visit  
[www.maxlite.com](http://www.maxlite.com)**



## LYNN™ Launches HyperDrop Compact Cable Splicing Enclosure

*Now Available, the New Patch and Splicing Enclosure is Unique, Small, and Easy to Install in a Variety of Environments, Such as Underground Burial, Pole Mount, Wall Mount or Wire Suspension LYNN™, a leading brand of custom fiber optic and copper cable assemblies from NSI, is proud to announce the launch its new HyperDrop PAS Mini IP68-rated patch and splicing enclosure (p/n HDPAS-M-x).*

“The LYNN HyperDrop PAS Mini IP68-rated patch and splicing enclosure is unique, small, and easy to install in a variety of environments, such as underground burial, pole mount, wall mount or wire suspension,” explained Charles Hoskins, V.P. of Product Development. “The all-plastic housing is made from an ABS and poly-carbonate (PC) blend with UV inhibitors to ensure a long service life in a variety of conditions.”



Additional features and specifications include:

- Ideal for splicing & coupling fiber, twisted pair & other low-voltage cables
- IP68-rated for outdoor installation
- Easy-to-open design with water-tight latching
- Includes easy-to-see fiber splicing tray
- Included grommets accommodate a variety of cable sizes & constructions
- Compatible with fiber couplers, fiber splice connections, keystones & other barrel-style couplers

An NSI brand, LYNN has been servicing the communications industry with an unmatched dedication to integrity, quality, and commitment to customers since 1964. LYNN custom fiber optic and copper cable assemblies are manufactured in Pennsylvania and California, and they are one of the few elite Corning Gold Certified cable assembly lines in the U.S. The LYNN line includes a complete offering of cabling, connectivity, and cable management solutions across broadband, security, audio-visual, industrial, and datacom applications.

**For more information, visit  
[www.thinklynn.com](http://www.thinklynn.com)**

## Affordable test equipment for 2024



**Spitfire** - Buried Low Voltage Cable Fault Locator

- ◆ Accurate
- ◆ Easy to use
- ◆ High energy output
- ◆ Proven reliability
- ◆ Compact design
- ◆ Lightweight

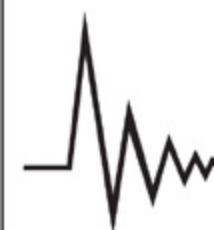
### Impulse Phaser - Cable / phase system

- ◆ Accurately identifies cables in trenches, vaults, conduits and enclosures
- ◆ Identifies jacketed, shielded, cables, even in pipe

**Wayfind'r** - Impulse cable tracer

- ◆ Accurate
- ◆ Easy to use
- ◆ Connects directly to energized cables
- ◆ Distinct signal for easy tracing
- ◆ Traces direct buried and cables in conduit
- ◆ Rugged, compact design

- ◆ Accurately identifies phases in multi-conductor cables
- ◆ Easy to understand and use



**TIMCO** INSTRUMENTS, LLC

Phone: (401) 539-7120 Fax: (401) 539-6018  
www.timcoinstruments.com





advertiser  
INDEX

This advertiser index is compiled as a courtesy to our readers. While every effort is made to provide a complete and accurate listing of companies and page numbers, the publisher is not responsible for errors. **Click the company name or page number to see their advertisement.**

Company	PG#	Company	PG#
APPLETON / EMERSON	13	RHINO MATS	25
APPLETON / EMERSON	15	SILTEC USA, INC	23
CONDUIT REPAIR SYSTEMS	4	SP PRODUCTS INC	3
iTOOLco	IFC	SP PRODUCTS INC	19
iTOOLco	IBC	SP PRODUCTS INC	26, 27
KRENZ & COMPANY	32	SP PRODUCTS INC	BC
KUIKBOX	1	TIMCO INSTRUMENTS CO	31
KUIKBOX	17	UNDERGROUND DEVICES	5
MILLER SAFETY CONSULTANTS LTD	7	UNDERGROUND DEVICES	29
RANDL INDUSTRIES	21		

When it comes to transformer cooling fans, Krenz-Vent is the industry recognized gold standard. Our leadership position is earned through 80+ years of R&D plus our superior engineering and customer service. You can rest easy when you specify Krenz fans.

**ENGINEERED TO COOL**  
There is no comparison.

**KRENZ & COMPANY, INC.**

KRENZVENT.COM • 262.255.2310 • KRENZ@KRENZVENT.COM

ALL THE INFORMATION YOU NEED IS JUST A CLICK AWAY AT **WWW.EPSMAG.NET**

**Electrical Products & Solutions**

Transition Couplings  
PVC Bell End Adapter  
Galvanized Rigid Conduit - 1/2" thru 6"

HOME ARTICLES NEWS VIDEO PRODUCTS SUBSCRIBE CONTACT

**Warming Up to Electrical Heating Cables**  
February 15, 2024

**WHAT'S NEW**

**Conduit Repair Systems, Inc.**  
The World Leader in Split Conduit Products

**EPS Magazine in Your Inbox**  
Subscribe to the Newsletter

**DMF Lighting Expands its M Series Commercial Collection**  
with High Lumen Packages for Hospitality and Mix-Use Spaces  
January 23, 2024

**New Multi-Tester from Klein Tools**  
Combines Core Electrical Products into One Model  
January 22, 2024

**RPS Launches SlimWave Filter To Safeguard Motor and Cables**  
January 22, 2024

# CORDLESS CANNON 6K

**iTOOLco.**  
WWW.iTOOLco.com | 865.670.3713

f i t y in

**TOP PRODUCTS 2022**  
Electrical Products & Solutions

Speed, versatility, and performance are all yours with iTOOLco's Cordless Cannon 6K™. This portable 6,000 lb. puller is intuitively designed to handle all of your day-to-day wire pulls.

The built-in capstan switch automatically turns the puller on and off. Simply tug on the rope to start the pull and slack off the rope to shut it down. Delivers dynamic performance in remote locations or areas where power is not yet available.

SCAN ME





# SPPRODUCTS, INC.

Productivity and value thru ideas  
**FOR SAFER BETTER FASTER JOBS**



We're Proud to be the Electricians' Friend for Over 50 Years!

**IP5**

**"The Original"**

Enter Any KO on Both Sides of the Box



**IP19/20**

4-Conduit Block  
PATENTED

**IP21a**

QwikBlock  
PATENT PENDING

Use 4-Conduit Block (IP19 or IP20) with QwikBlock (IP21a)

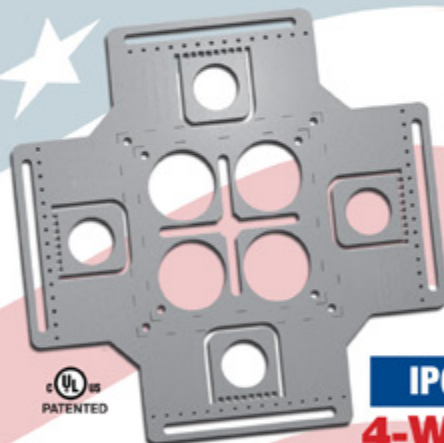
**IP6d**

**2-Way**

with Split Fingers for Horizontal or Vertical Installation



**Our Family of Conduit & Box Support Plates Saves Valuable Time & Money!**



**IP6**

**4-Way**

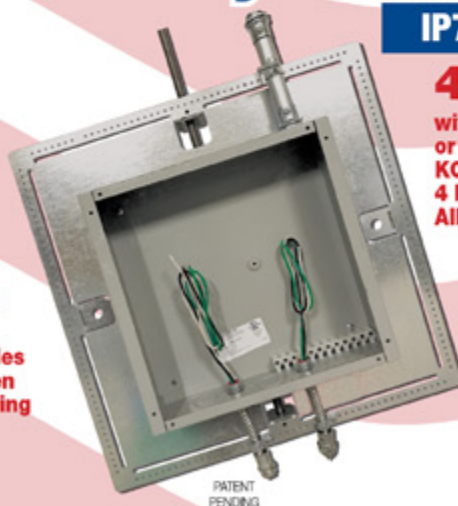
Enter Any KO on All 4 Sides of the Box Plus 4 Large Open KOs in Center Allows Entering Back of Box



**IP6a**

**2-Way/Half**

Enter Any KO on 1 or 2 Sides of the Box Plus Large Open KOs in Center Allows Entering Back of Box



PATENT PENDING

**IP7**

**4-Way**

with Split Fingers for Horizontal or Vertical Installation. Enter Any KO on All 4 Sides of the Box Plus 4 Large Open KOs in Center Allows Entering Back of Box.

**IP8**

Mount Horizontally or Vertically from One Single Support

**20 x 20**

Supports up to 12 x 12 J-Box

**28 x 28**

Supports up to 20 x 20 J-Box

**MADE IN THE USA!**

Plus More Being Invented for **SAFER BETTER FASTER** Jobs . . . Call With Your Ideas!

SPProducts.com **800-233-8595** info@SPProducts.com