

JUNE 2024

Electrical

Products & Solutions™

The Purchasing Guide for Electrical Contractors

www.epsmag.net



The Importance of
Safety in Hand Tools
for Professionals

iTOOLco.

THE MVP20K

MORE POWER. NO COMPROMISES.

865-670-3713 | www.iTOOLco.com



Picking Up and Installing a KUIKBOX
Is as easy as 1, 2, 3!

1



Grab a KUIKBOX

2



Pick Any Square Cover

KUIKBOX

Electrical Enclosure System

3



Install in Minutes!

Think Simpler. Design Better.



HOME OF THE KUIKBOX

42906 Colony Road • Olivet, S. Dakota 57052
kuikbox@gmail.com • For more info, visit kuikbox.com

**BUILT
IN THE
USA**

CONTENTS

8



COMPANY PROFILE

6 Protect Yourself
Miller Safety Consultants —
A Leader in Arc Flash Protection
BY VINCENT MILLER

COVER STORY

8 The Importance of Safety in Hand Tools for Professionals
BY ADAM MOSCHEROSCH

CASE STUDY

30 High-end Lighting Control for the Latest Mixed-use Complex in Vietnam
Tridonic supplies state-of-the-art lighting technology for the 354,000 square metre Lotte Mall West Lake Hanoi

DEPARTMENTS

14 INDUSTRY NEWS
22 NEW PRODUCTS
32 AD INDEX

ON THE COVER

Photo courtesy of Milwaukee Tool



Electrical
Products & Solutions™
The Purchasing Guide for Electrical Contractors www.epsmag.net

PUBLISHER
Danny J. Salchert

OFFICE MANAGER
Anita Salchert

CREATIVE DIRECTOR
Derek Gaylard

CIRCULATION DIRECTOR
Pam Fulmer

CONTRIBUTING WRITERS
Vincent Miller
Adam Moscherosch



PRESIDENT
Danny J. Salchert

**EXECUTIVE AND
ADVERTISING OFFICES**
2009 Eagle Ridge Drive
Birmingham, AL 35242
phone: 205.981.4541
www.epsmag.net
danny@epsmag.net

Electrical Products & Solutions™ is published twelve times a year on a monthly basis by ABD Communications, Inc., 3591 Cahaba Beach Road, Birmingham, Alabama, 35242, USA. *Electrical Products & Solutions™* is distributed free to qualified subscribers. Non-qualified subscription rates are \$57.00 per year in the U.S. and Canada and \$84.00 per year for foreign subscribers (surface mail). U.S. Postage paid at Birmingham, Alabama and additional mailing offices. *Electrical Products & Solutions™* is distributed to qualified readers in the electrical contracting industry. Publisher is not liable for all content (including editorial and illustrations provided by advertisers) of advertisements published and does not accept responsibility for any claims made against the publisher. It is the advertiser's or agency's responsibility to obtain appropriate releases on any item or individuals pictured in an advertisement. Reproduction of this magazine in whole or in part is prohibited without prior written permission from the publisher.

POSTMASTER: Send address changes to
ABD Communications, Inc., P.O. Box 382885
Birmingham, Alabama 35238-2885

FOLLOW US ON



SP PRODUCTS, INC.
Productivity and value thru ideas
FOR SAFER BETTER FASTER JOBS

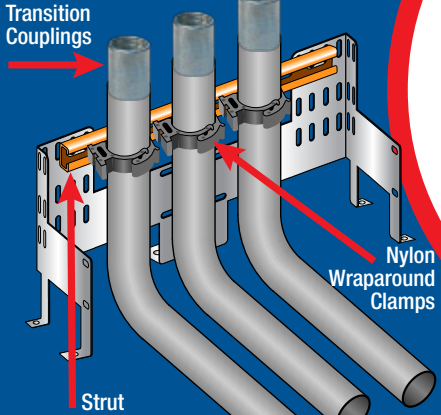
We're Proud to be the Electricians' Friend for Over 50 Years!

**NEW
PRODUCT!**

IP10a

EZ STUB-UP

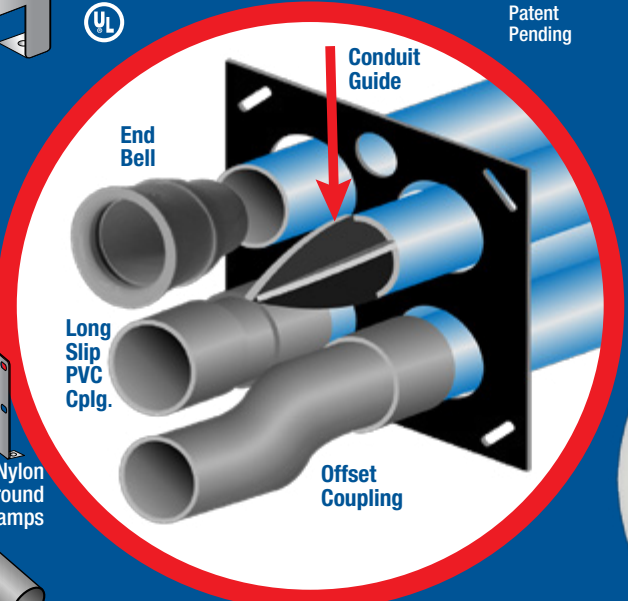
Join two EZ Stub-Ups with strut to support and secure multiple stub-ups on wooden forms before concrete pour for sizes 1/2", 3/4", 1" & 1-1/4" stub-ups with SP's Nylon Support Brackets and transition to RGB with our transition couplings.



IP1

Qwik Duct
Safer Better Faster

HDPE CUSTOM TEMPLATES
In Any Configuration Required



**IP3b
IP3c**

PVC Offset

Sizes 1/2" thru 6"
Meets Flexible
Madrel Test
Requirements

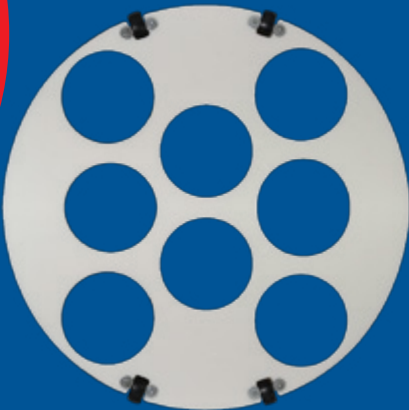


Patent Pending

Bore Spacers

Sizes 1/2" thru 6"
Roll assembled conduit
into caissons and under
obstructions

IP2a



IP13a-p

Conduit Transition Couplings



PVC schedule 40 & 80

Patent Pending

*Transitions in Less Than
5 Minutes*



IP3a

**End Bell
Adapter**
Schedule
40/80 PVC



Patent Pending

PVC/Liquidtite

PVC/MC Cable

PVC/EMT

PVC/PVC

PVC/Stainless

PVC/Aluminum

Bell End/Rigid

PVC Slip/Rigid



Patent Pending

IP15

**1 Piece
Reaming Bit**
1/2" thru 6"
Schedule 40/80

Plus More Being Invented for SAFER BETTER FASTER Jobs . . . Call With Your Ideas!

SPProducts.com 800-233-8595 Info@SPProducts.com

REPAIR CONDUIT IN A SNAP!

No Tape • No Plastic Straps • No Metallic Straps

NO KIDDING!

Designed especially for power, communications and fiber optics.



STEP 1
Remove damaged conduit



STEP 2
Cut split duct conduit to fit



STEP 3
Snap in place

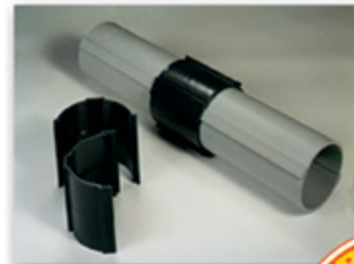
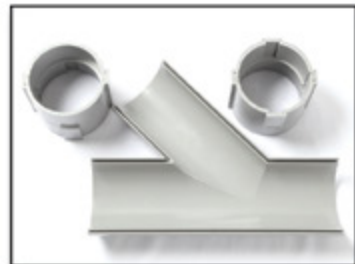
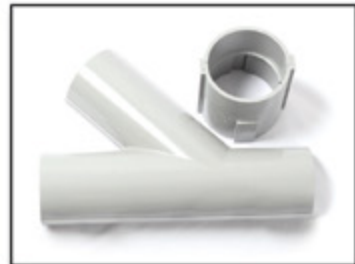


STEP 4
Attach adapters



STEP 5
Finish job in record time

"The World Leader In Split Conduit Products"



Conduit Repair Systems, Inc.
The World Leader In Split Conduit Products



800.670.1804 • 435.673.8724 fax • crs@conduitrepair.com • www.conduitrepair.com

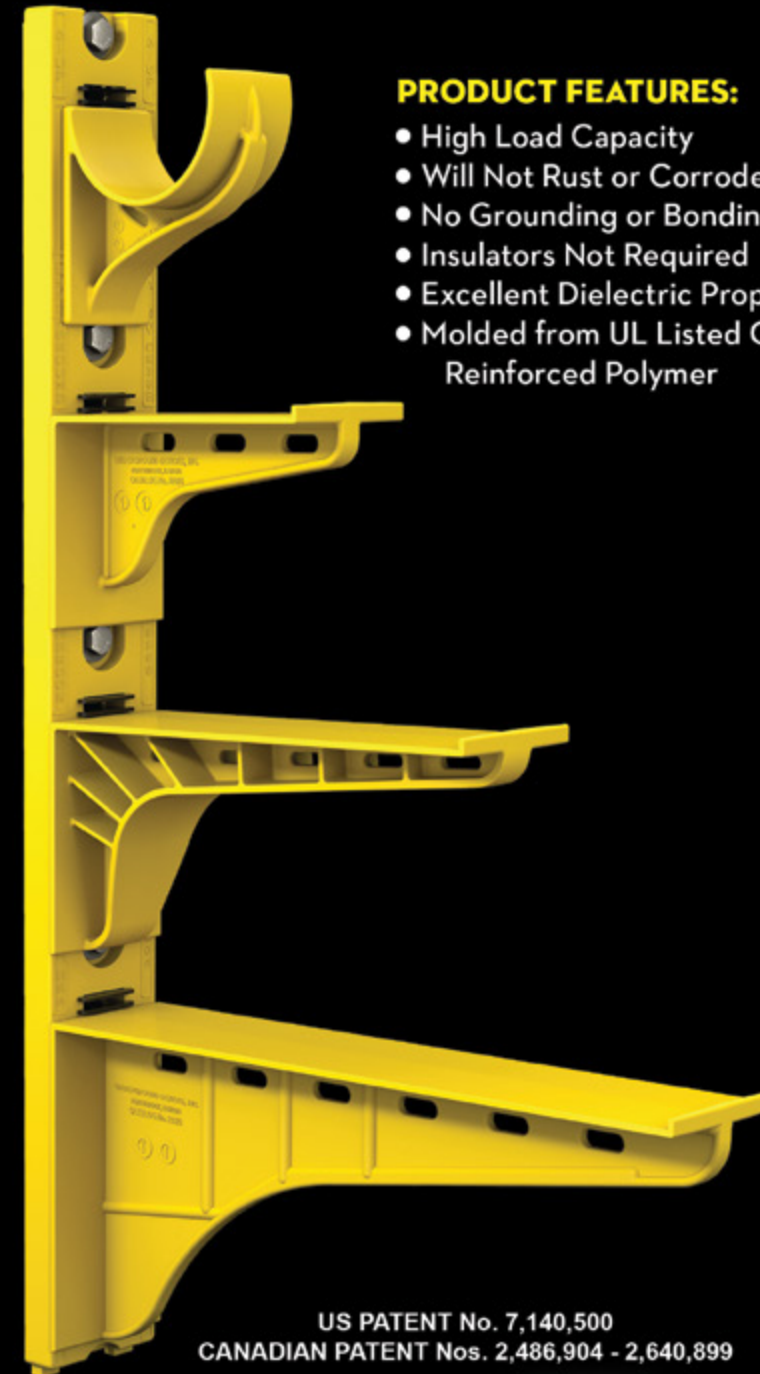
The Heavy Duty Nonmetallic CABLE RACK

For Power and Communications Manholes And Vaults



PRODUCT FEATURES:

- High Load Capacity
- Will Not Rust or Corrode
- No Grounding or Bonding
- Insulators Not Required
- Excellent Dielectric Properties
- Molded from UL Listed Glass Reinforced Polymer



US PATENT No. 7,140,500
CANADIAN PATENT Nos. 2,486,904 - 2,640,899



HDL Arm Lock shown with
RA04 Arm and CR36-B Stanchion



3HDS - 3" throat saddle shown with
a cable secured by cable ties.



RA08 - 8" arm shown with three
cables secured by cable ties.

UNDERGROUND DEVICES
INCORPORATED



420 ACADEMY DRIVE
NORTHBROOK, IL 60062
Phone: 847-205-9000 • Fax: 847-205-9004
Website: www.udevices.com

Protect Yourself

Miller Safety Consultants — A Leader in Arc Flash Protection

Vince Miller started Miller Safety Consultants, a veteran owned business in 1999. The goal of the business was to provide cost effective safety consulting, employee training such as: confined space entry, fall protection, electrical safety and provide sales of electrical shock and flash protective equipment and fall protection equipment to businesses in the Washington DC area.

Reliance Industries provided fall protection products and much of the sales and training was on behalf of the supplier. In 2000, the owner decided to retire from his business, and Vince decided to discontinue the fall protection line of his business and concentrate more in the electrical training and products.

Vince had been a distributor for Certified Insulated Products (CIP), a manufacturer of electrical insulated tools and electrical arc flash clothing manufactured by Otex in Rochester, New York. As a distributor, Vince provided sales through his internet website and much through relationships with electrical contractors. His training was a classroom environment and was provided directly to customers but he also taught as a sub-contractor for other safety consulting companies and the

Chesapeake Safety Council in Baltimore, Maryland. In 2005, Vince partnered with Vivid Learning Systems in Cascades, Washington to provide on-line training in safe work practices.

Training in electrical safe work practices is still provided locally in the Washington DC area and as a partner with an electrical engineering firm and online. The training is based on the Occupational Health and Safety Administration (OSHA) standards and the National Fire Protection Association (NFPA) 70E standard.

Miller Safety Consultants is now a distributor for Cementex USA, Burlington, New Jersey, for insulated tools and equipment and clothing from OTEX Protective, Rochester, New York.

The majority of his sales of products

are from the web-based store. Cementex is nationally known for their quality equipment. Otex Protective is becoming more known for their quality clothing. For years, they have manufactured their products under other provider labels. Vince chose to not create his clothing line, but to sell the manufacturer product.

Vince has worked with many electrical company employees to fine-tune the clothing to be more comfortable for the user. Working closely with the manufacturer, they have made slight changes in how the cloth pattern was modified to meet final production. An example is the lightweight 40 Calorie vented hood offered by Otex.

The material is of the latest technology. The vented assembly is constructed for balance on the back of the hardhat and the airflow is 27 CFM to prevent fogging of the face shield and provide cooling to the worker. It took over a year to develop the product with the user prior to having the hood "flash tested". This product is now standard issue with many electrical contractors.

Being a small business and having quality providers has resulted in satisfied customers for Miller Safety Consultants. Being a direct supplier for OTEX Protective, another small business means customized customer needs can be met. □

For more information, visit
Miller Safety Consultants at:
www.electricalsafetyproducts.com, email
Vince at: sales@millersafetyltd.com.

AUTHORIZED
Cementex
The Safety Tool Specialists
DISTRIBUTOR

Give Vince a call at
(703) 367-0404



Deluxe Maintenance Tool Kit



Class O Glove Kit

Protect yourself from "Arc Flash"

ARC FLASH LIFT-FRONT HOOD WITH V¹² HIGH-VOLUME VENTILATOR
Compact. Powerful. Reliable

Our V¹² High-Volume Ventilator boasts an unexpectedly quiet, high output (35+ CFM) turbine fan to cool and circulate the ambient air within the hood. Fully protected beneath it's durable ABS shell and added fabric layering, the V¹² High-Volume Ventilator isn't just compliant, it's superior.



40 CAL/CM2 ULTRALIGHT CLOTHING BY OTEX

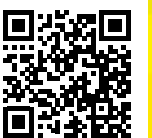
Our new dual-layer Ultralight clothing takes advantage of DuPont's® dedication to scientific advancement and Westex's® industry leading dependability. Weighing in 37% lighter than traditional HRC4 PPE, our Ultralight Clothing is the most innovative contender in the lightweight arena.

HYBRID LAYERING

Combined Fabric Weight: 14 oz

Outer Layer: DuPont® Protera
Color: Navy

Inner Layer: Westex Ultrasoft
Color: Safety Orange



CALL US TODAY
(703) 367-0404

OR VISIT OUR ONLINE ELECTRICAL SAFETY EQUIPMENT STORE
www.electricalsafetyproducts.com

“Milwaukee Tool’s Cutting Pliers (Made in the USA) offer an advanced, user-driven design that minimizes the risk of injuries from repetitive tasks.”

The Importance of Safety in Hand Tools for Professionals

By ADAM MOSCHEROSCH, Director of Product Marketing at Milwaukee Tool

1000V Insulated
9” Lineman’s Pliers

HAND TOOLS PLAY AN ESSENTIAL ROLE in a professional electrician’s safety, and productivity, helping them accomplish many of their foundational tasks around the jobsite. For an electrician, the right tools can mean the difference between a safety risk and a job well done as they constantly operate in potentially hazardous environments, making the need for safe tools an absolute must. These tools receive extensive use throughout a professional’s career, further driving the importance of quality and reliability in a hand tool investment.



1000V Insulated Wire Stripper

Hand tools such as pliers, wire strippers, and crimpers are all basic tools electricians have used for decades. Despite the heavy use and high demands of these products, many of these solutions have seen little innovation over time. However, some manufacturers have worked to integrate continuing technology with certain advancements in the design and manufacturing processes to make their hand tools. With these improvements, many new tools are enhancing the safety of the professional jobsite, providing users with better durability and performance.

Safety Improvements

No matter what kind of work an electrician is doing, selecting safe and reliable hand tools is vital. For instance, for electricians who work in environments where live circuitry may

be present it is crucial to take extra precautions, wear advanced PPE, and utilize insulated hand tools. Insulated hand tools, along with proper PPE and safety precautions, provide an essential barrier for user safety. Milwaukee Tool’s recent expansion of Insulated Hand Tools stands as a recent industry example of solutions designed to further improve the safety of professionals. These solutions, including the 1000V Insulated 9” Lineman’s Pliers, 1000V Insulated 8” Diagonal Cutting Pliers, 1000V Insulated Wire Stripper, 1000V Insulated Multi-Bit Screwdrivers, and 1000V Insulated Slim Tip Screwdrivers are UL classified and certified to IEC 60900 and ASTM F1505 standards for insulated hand tools.

Helping reduce fatigue in application is another important factor to driving safety for the professional on the jobsite. As frequent use of poorly designed

tools often leads to hand, wrist, and muscle strains, investing in hand tool solutions with ergonomic designs can help to prevent injury from repetitive actions over time. Comfortable handles and padded grips are two examples of design features that can help lessen muscle strain and improve control. Milwaukee Tool’s Cutting Pliers (Made in the USA) offer an advanced, user-driven design that minimizes the risk of injuries from repetitive tasks. Setting professionals up for success right out of the package, these pliers are engineered to deliver the smoothest open and close experience with no break-in period required. Helping to improve safety, these solutions are offered in comfort grip with lanyard hole and dipped grip with a split-ring hole making them tether-ready for complete tie-off while working at heights on the jobsite. These pliers are optimized for overhead and

Milwaukee Tool’s expansion of Insulated Hand Tools stands as a recent industry example of solutions designed to further improve the safety of professionals.

confined spaces, enhancing control and reducing fatigue.

Performance, Efficiency, and Durability

More and more is being demanded from electricians. To meet those demands, while also maintaining safety on the jobsite, performance, efficiency, and durability in hand tool solutions are crucial factors for professional electricians to consider. Tools designed with efficiency in mind can reduce the number of tools required for a job, allowing users to carry less on their

person. More durable tools allow users to stay on the job rather than having to track down a replacement for a damaged or broken tool. Purchasing durable hand tools from a trusted manufacturer ensures professionals can stay efficient and productive on the job.

Understanding the importance of performance, efficiency, and durability, Milwaukee’s Cutting Pliers (Made in the USA) solutions deliver professionals with top performance and ultimate durability to drive productivity and efficiency. An ergonomic design provides professionals with the easiest



1000V Insulated Wire Stripper

TO VISIT AN ADVERTISER’S WEBSITE, SIMPLY CLICK THE QR CODE OR COMPANY NAME IN THEIR AD.

FLPHYTMLS

Feature ARTICLE

Plannenberg USA

How to Select a Filter Fan Based on Application Conditions

From electrical equipment to environmental considerations, here are expert tips for smart selection

BY LUCAS PROLWIER, SOLUTIONS ENGINEER, PLANNENBERG USA

What are filter fans?

Filter fans provide dedicated ventilation from exhaust contaminants. They are used to control the atmosphere in the space of a room or a building. They are used to control the atmosphere in the space of a room or a building. They are used to control the atmosphere in the space of a room or a building.

Challenges for outdoor applications

Filter fans are necessary for a wide range of outdoor applications. They are used to control the atmosphere in the space of a room or a building. They are used to control the atmosphere in the space of a room or a building.

Benefits of filter fans

Filter fans provide dedicated ventilation from exhaust contaminants. They are used to control the atmosphere in the space of a room or a building. They are used to control the atmosphere in the space of a room or a building.

Create a More Productive Environment with Retrofit Solutions

The Appleton® Filter Fan is a retrofit solution for existing buildings. It is designed to provide dedicated ventilation from exhaust contaminants. It is designed to provide dedicated ventilation from exhaust contaminants.

APPLETON

EMERSON

BONUS FEATURE

Electrical Products & Solutions

The Proven Choice for Electrical Contractors

www.electrical.net

10 | Electrical Products & Solutions | JUNE 2024

JUNE 2024 | Electrical Products & Solutions | 11



1000V Insulated
Multi-Bit Screwdriver

cuts while an optimized pivot point design gives maximum leverage to cut through tough materials. Built to last- and covered by a Milwaukee® Lifetime Guarantee, these cutting pliers have laser-hardened edges and teeth, delivering maximum grip and give users confidence in a long cut life. To drive efficiency and reduce tool swapping, the 1000V Insulated Multi-Bit Screwdrivers come with common tip types used by electricians, which allows users to carry less.

What does this all mean?

Overall, the continued innovation of electrical hand tools is crucial to ensuring the safety of professionals on the jobsite. High quality solutions provide users with durable tools that can withstand daily demands and maintain user safety in application. By investing in top-performing, trade-focused, hand tool solutions, electricians can meet

the demanding requirements of the jobsite, increasing their productivity and performance. Milwaukee Tool's commitment to understanding the challenges and requirements of professionals in the field ensures the delivery of cutting-edge manufacturing technology, resulting in innovative, high-performance solutions. □



1000V Insulated Multi-Bit Screwdrivers

1000V Insulated
Slim Tip Screwdrivers



MADE IN AMERICA, FOR AMERICA

At Electri-Flex, we are proud to do our part in **rebuilding America** by providing **top-quality, domestically sourced conduit** made right here in the U.S. Our industry-leading Liqueatite® flexible conduit line is second to none, **offering options for virtually every application**, from data and defense to transit, rail and bridges. And backed by more than **65 years of family ownership**, we look after your business as if it were an extension of our own. Because we believe that America deserves the best.

Electri-Flex.
Rebuilding our infrastructure
at every turn.

DISTRIBUTORS NATIONWIDE

**ALL PRODUCTS PROUDLY
MADE IN THE USA**



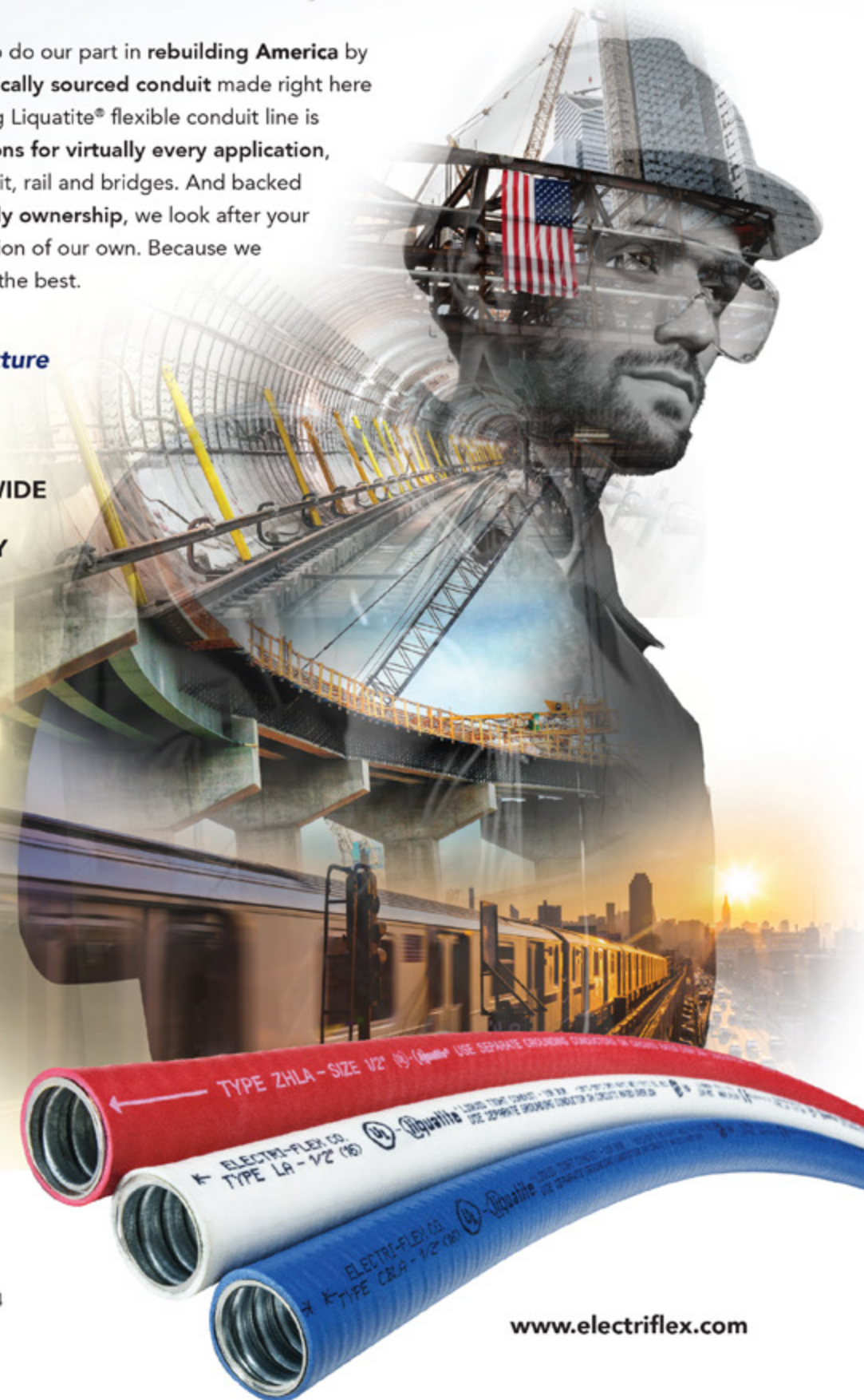
electri-flex



ELECTRI-FLEX COMPANY

222 West Central Ave
Roselle, IL 60172-1994 USA

Toll-free phone (U.S.): (800) 323-6124
Phone: (630) 529-2920



www.electriflex.com

Liquatite® Conduit Engineered for Data Center Installations

ELECTRI-FLEX COMPANY, Roselle, IL USA, manufactures Liquatite® flexible electrical conduits engineered for Data Center installations. Liquatite® provides high-quality Data Center wiring protection solutions that offer physical protection to wires and cables, flexibility to bend where wiring needs to go, conduit with colored jacketing to identify critical circuitry, UL-listed and CSA-certified varieties, and halogen-free, low fire hazard solution types.

Data Centers require adaptable solutions that assure safety and security, providing durable wiring protection, circuitry identification, and safeguarding critical wiring infrastructure. Our Liquatite® polyurethane jacketing addresses stringent Data Center safety standards by being a halogen-free material, which significantly reduces the risk of toxic smoke and fire spread. These conduits are a low-fire hazard solution, featuring self-extinguishing properties that enhance safety in enclosed spaces. Additionally, colored conduits are available to help identify critical wiring infrastructure, with common options like computer blue and red, and the flexibility to blend colors to meet specific requests. Furthermore, Electri-Flex's flexible conduits are UL and CSA certified, ensuring the highest standards of safety and durability. These certifications provide additional assurance that our products are designed to protect critical data center infrastructure effectively.

Electri-Flex's master reels prioritize productivity, logistics, and customization for seamless installations. Master reels offer significant solutions



to data center installations, providing on-demand adaptability that enhances efficiency and flexibility.

Data Center wiring can be installed in overhead distribution systems or from under a raised floor in ladder racks. Flexible electrical conduit is used in either application, offering a bendable path for wiring needs, and protecting important wiring from dust and debris. Electri-Flex manufactures jacketed metallic flexible conduits that are ideally suited for these applications.

- Type CBLA is the most commonly used type of jacketed flexible conduit. It is easily identifiable with its computer blue jacketing color, is both

UL-listed and CSA-certified, made with a hot-dipped galvanized steel core, and has a flexible PVC jacketing.

- Type ZHLA is a Zero-Halogen, or Halogen-Free, low-fire hazard solution and is ideally suited for enclosed installations, and is both UL-listed and CSA-certified. The core is made of hot-dipped galvanized steel but the jacketing is a flexible, zero-halogen polyurethane. It omits low amounts of non-toxic smoke, has a low flame spread, and is self-extinguishing. It is available in a variety of jacketing colors, including black (standard), red, blue, gray, orange, yellow, green, and more. □

ABOUT ELECTRI-FLEX COMPANY

Electri-Flex Company, a leader in electrical conduit design and manufacture for nearly 70 years, produces Liquatite®, the most diverse line of liquidtight flexible electrical conduit in the industry. The company offers custom design, engineering, quality assurance, and testing capabilities. For more information on Electri-Flex Company, call (630) 529-2920 or (800) 323-6174; fax: (630) 529-0482; e-mail: mktg@electriflex.com; visit: www.electriflex.com; or write: 222 West Central Avenue, Roselle, IL, 60172-1994.



*Appleton™ Retromaster
LED Series Luminaires*

Create a More Productive Environment with Retrofit Solutions

The Appleton™ Retromaster LED Series by Emerson is designed to upgrade outdated legacy lighting fixtures to LED to improve operational life and lower maintenance costs. Safely illuminate Class I, Division 2 locations with models providing up to 5000 lumen output in a compact footprint. With dual lumen outputs, the Retromaster LED provides a tailored retrofit solution for your facility.

Learn More at: www.masteringled.com

APPLETON™

The Emerson logo is a trademark and a service mark of Emerson Electric Co. © 2024 Emerson Electric Co.



Vantage Announces New Partnership With WALL-SMART

WALL-SMART is Now Compatible With Multiple Vantage Products, Including EasyTouch Keypads

Legrand’s lighting control brand, Vantage, recently announced it has partnered with WALL-SMART®, a leader in flush wall mount solutions. This partnership enables WALL-SMART to seamlessly flush-mount Vantage keypads into any space, providing a clean and sophisticated look while maximizing functionality. Together, they provide a complete and aesthetically pleasing design and user experience for new construction and solid surface applications in the luxury residential market.

“Flush-mounted keypads and touchscreens are rapidly growing in popularity for luxury smart homes,” said Galia Ben-Dor, Co-CEO at WALL-SMART. “We are thrilled to be working with Vantage. This partnership allows Vantage’s sleek keypad interfaces to be integrated into projects that require a flush mount installation for solid surface or new construction applications.”

WALL-SMART designs and manufactures flush wall mounts that skillfully blend practical control and stylish design, effortlessly integrating technology into any wall. The company’s wall mounts ensure a smooth integration of elegant keypads,

switches, touch panels, tablets, and other devices with robust wall surfaces, preserving the architectural aesthetic of the structure. Their compatibility with Vantage products will bring a new level of functionality and flexibility to any environment. WALL-SMART’s flush wall mounts are offered for Trimline II trims containing Vantage’s EasyTouch keypads, RPTouch keypads, SquareTouch keypads, and wiring devices. The mounts are also compatible with Equinox Touchscreens and adorne® Touch keypads and devices, enhancing Vantage’s versatility.

Vantage keypads and user interfaces provide unlimited possibilities while maintaining a high-quality aesthetic appeal. Designs and button styles can be mixed and matched with unique finishes to ensure each system is customized to mirror each user’s personal style.

“Collaborating with WALL-SMART has been incredibly rewarding. Our partnership guarantees seamless integration between WALL-SMART’s flush wall mounts and Vantage’s lighting control products,” said Richard Laliberty, Product Marketing Manager, Vantage & Legrand Shading Systems. “Flush-mounted Vantage products



deliver enhanced visual appeal, as they are custom and precisely fit to blend into all spaces. This integration grants more freedom of design to harmonize home aesthetic and technology within residential lighting control projects.”

Only registered WALL-SMART dealers can purchase WALL-SMART flush mount solutions for Vantage projects. To become a dealer, register here <https://www.wall-smart.com/become-a-dealer.html> □

ABOUT WALL-SMART LTD.

WALL-SMART is the leading designer and manufacturer of custom flush ceiling and wall mounts for high-end home electronic devices, including tablets, touchscreens, Wi-Fi access points, security cameras, voice assistants, and more. Dedicated to providing cutting-edge, creative, and cost-effective concealment solutions for technology in new and existing homes, WALL-SMART inspires homes that are both technically advanced and exceptionally beautiful. A wide range of products, combined with simple installation and fast, hassle-free worldwide shipping, poises WALL-SMART as a valuable smart home resource for home systems integrators, home builders and contractors, architects, and designers.



ABOUT LEGRAND

Legrand is the global specialist in electrical and digital building infrastructures. Its comprehensive offering of solutions for commercial, industrial, and residential markets makes it a benchmark for customers worldwide. The group harnesses technological and societal trends with lasting impacts on buildings with the purpose of improving life by transforming the spaces where people live, work, and meet with electrical, digital infrastructures and connected solutions that are simple, innovative, and sustainable. Drawing on an approach that involves all teams and stakeholders, Legrand is pursuing its strategy of profitable and responsible growth driven by acquisitions and innovation, with a steady flow of new offerings — including products with enhanced value in use (faster-expanding segments: data centers, connected offerings, and energy efficiency programs). www.legrand.us



Extend Luminaire Life While Reducing Energy Consumption

The Appleton™ Mercmaster™ Connect LED by Emerson is designed to illuminate hazardous and harsh industrial locations with integrated motion and illuminance sensors. Paired with Emerson’s Plantweb Insight Connected Lighting Application, operators have access to lighting usage data and sustainability analytics.

The Mercmaster Connect LED provides facility managers with continuous monitoring of their LED lighting with real-time insights gained into sustainability goals, diagnostics and lumen levels from any remote location at dramatically lower costs as compared to wired alternatives, with faster installation time and minimal disruption to plant operations.

Learn more at: masteringled.com



Appleton™ Mercmaster™ Connect LED

APPLETON™

The Emerson logo is a trademark and a service mark of Emerson Electric Co. © 2021 Emerson Electric Co.



CONSIDER IT SOLVED™

MaxLite Appoints Lance Hollner as President & Chief Executive Officer

Industry veteran brings proven track record in Sales & General Management

MaxLite, a leading innovator in the LED lighting industry, is pleased to announce that its Board of Advisors has appointed Lance Hollner as its new President & CEO.

A lighting industry veteran, Hollner brings over two decades of lighting expertise and knowledge to MaxLite, along with a strong track record of delivering results, driving continuous improvement, and developing talent. Much of his career has been spent at manufacturers including Acuity, Lutron, Encelium Technologies, and Avi-on Controls, holding various GM, Sales Leadership, and Product Management roles.

Before joining MaxLite, Hollner spent the last five years as Executive Vice President at Diversified Group, a premier manufacturer’s representative firm serving Eastern Pennsylvania, Delaware, New Jersey, and New York City. In that role, he helped guide territory expansion into New Jersey and New York City while building a robust controls and services team. He brings considerable experience with turnkey renovation lighting and EV infrastructure sales, and very relevant experience working with international suppliers and contract manufacturers. He has an engineering degree from Georgia Tech and will be working out of the company’s headquarters in New Jersey.

“On behalf of MaxLite’s Board, I am pleased to welcome Lance



as our new CEO,” said Yon Sung, Chairman of the Board. “His deep industry experience and proven record, combined with his passion for continuous improvement, make him the ideal leader for MaxLite’s next chapter. With Lance as CEO, we are well-positioned to continue our evolution as a leader in energy efficient technologies and eco-friendly solutions. I would also like to thank our outgoing CEO, Spencer Bolgard, for his contributions to the company, especially on several

key initiatives during his tenure.”
“I’m honored to be chosen to lead MaxLite, a company well-known for its dedication to innovative solutions and high-quality products,” said Lance Hollner, Chief Executive Officer. “I see tremendous opportunity for MaxLite to continue this momentum well into the future. As CEO, I’m excited to work with our teams to capitalize on MaxLite’s strengths, continue to develop innovative new products and expand our valued relationships.” □

ABOUT MAXLITE

MaxLite has been committed to providing energy-efficient lighting products since 1993. One of the first movers into LED technology in the industry, MaxLite offers a complete portfolio of quality certified LED lamps, indoor and outdoor LED luminaires, and a full line of its patented C-Max Lighting Controls. A five-time recipient of the ENERGY STAR Partner of the Year Award for its industry leadership, MaxLite continues to be at the forefront of energy-efficient technologies through the innovative research and development capabilities of its teams and facilities in New Jersey, Indiana, California, and globally. MaxLite is a nationally certified Minority Business Enterprise (MBE) by the National Minority Supplier Diversity Council. For more information, call 800-555-5629 or visit www.maxlite.com.



We’re Proud to be the Electricians’ Friend for Over 50 Years!

New Products Safer Better Faster

IP19

4-Conduit Block

Vertical support from only one 1/4", 3/8" or 1/2" threaded or threadless rods 1/4" or 3/8" threaded holes on the side along with slots for hex head bolts for hardware are provided for conduit support.

IP21a

QwikBlock

Vertical support from only one 1/4", 3/8" or 1/2" threaded rod by attaching two machine screws 1/4" x 20 thru the existing holes in back of the box. Eliminates knocking out center KO on box and traditional nut and washer method to support a single box.

IP20a

Box Support Rod Cubes

Vertical support from only one 1/4" or 3/8" threaded or threadless rod with 4 holes for Gripper applications as well as 4 threaded 1/4" or 3/8" holes for conduit support hardware.

IP3e

PVC Guide

IP2b

PVC Driver

TE15

Conduit Layout Tool

IP3g

Long Slip PVC

IP3f

Slip PVC/RGD

IP3e

EZ Raised Bracket

For more information visit our website at SPProducts.com

Plus More Being Invented for SAFER BETTER FASTER Jobs . . . Call With Your Ideas!

SPProducts.com 800-233-8595 Info@SPProducts.com

LYNN™ Announces Custom Engraving & Branding for Enclosures, Plates, & Panels

Now Available, the On-Demand, Low Quantity Engraving is Available for Most Cable Management and Connectivity Products, Including Enclosures, Plates, and Panels, Making it Perfect for In-the-Field Brandin and Customer Retention



LYNN™, a leading brand of custom fiber optic and copper cable assemblies from NSI, is proud to announce custom engraving options to personalize products and projects for its customers. “Our customers can now customize their next installation with personalized laser-engraving from LYNN,” explained Charles Hoskins, V.P. of Product Development. “We offer engraving for most cable management and connectivity products, including enclosures, plates, and panels. This is an ideal option for those that want to have a company, municipality, or even individual name and/or logo permanently engraved on any number

of products for security, in-the-field branding, and customer retention.” Custom engraving is available for most metal and plastic products, including LYNN’s popular TheNID, SlimFIT, and HyperDrop lines. “LYNN invested in U.S.-based engraving production, allowing us to custom brand products in very low quantities and very quickly,” continued Hoskins. “This an ideal option for service providers, integrators, distributors, and value-added-resellers who want their information and/or their customer’s information permanently displayed on product.” An NSI brand, LYNN has been

servicing the communications industry with an unmatched dedication to integrity, quality, and commitment to customers since 1964. LYNN custom fiber optic and copper cable assemblies are manufactured in Pennsylvania and California, and they are one of the few elite Corning Gold Certified cable assembly lines in the U.S. The LYNN line includes a complete offering of cabling, connectivity, and cable management solutions across broadband, security, audio-visual, industrial, and datacom applications. For more information on the LYNN product line, please visit us online at www.thinklynn.com. □

ABOUT NSI INDUSTRIES, LLC

NSI’s core philosophy is Making Connections. Focused on the electrical, building technology, and HVAC markets, NSI connects distributors to products, services, and technologies by providing a fresh perspective and caring approach that drives smart solutions. The driving force behind a stable of market-leading brands and a large breadth of products, the company’s primary job for more than 45 years has been to fulfill the needs of distributors and their customers. By staying grounded in the principles of service and value, NSI continues to deliver high-quality, industry-advancing, and comprehensive product solutions that enable growth.

NSI has many well-respected brands, including Bridgeport Fittings®, Polaris® Power Connectors, TORK®Timers and Controls, WarriorWrap® Professional Tape, TERMINATOR™ Premium Wire Connectors, RHINO Safety™, Platinum Tools®, TechLogix Networkx, Duro Dyne® Sheet Metal Accessories, Metallics™ Fasteners, Remke Industries, and Lynn Electronics. For additional information about NSI Industries and our family of brands, visit www.nsiindustries.com.



RANDL
INDUSTRIES, INC.

Install Peace of Mind!

First there was 4 square...
and now the **REVOLUTIONARY 5 Square® Box!!**

You’ve struggled with 4 Square boxes for years - you know how small, cramped and time consuming they are. Finally, there is a solution that allows you the space you have always needed.

The **5 Square®** Boxes (5" x 5" x 2-7/8") provide up to 88 in³ of interior volume which more than doubles that of most existing boxes on the market.

Create a robust and unrivaled infrastructure for the life of your facility with the **5 Square®** Products!

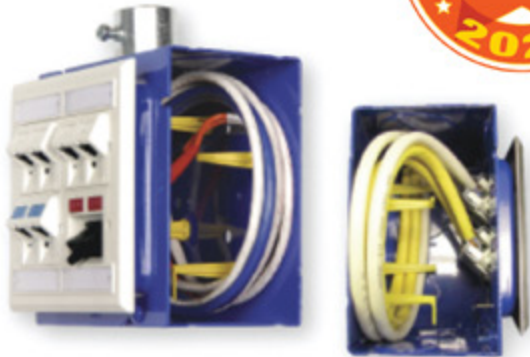


Fire Signal



- TWICE THE VOLUME AS MOST BOXES
- SAVE LABOR...INCREASE PROFITS
- ELIMINATES TROUBLESHOOTING TIME AND COST
- FULLY UPGRADEABLE SYSTEM
- SPECIFIED BY ENGINEERING FIRMS, HOSPITALS, UNIVERSITIES & GOVERNMENT AGENCIES
- AVAILABLE IN ZINC OR RED

Telecommunications



- INTEGRAL CABLE MANAGEMENT
- SAVE LABOR...INCREASE PROFITS
- FACILITATES MIN. BEND RADIUS REQUIREMENTS
- SUPPORTS CURRENT AND EVOLVING SYSTEMS
- SUPPORTS PoE PLUS
- SPECIFIED BY ENGINEERING FIRMS, HOSPITALS, UNIVERSITIES & GOVERNMENT AGENCIES

RANDL
INDUSTRIES, INC.

P: 509.340.0050 • F: 509.340.0051
See our line of telecom & fire signal boxes at: www.RANDL-INC.com
Making Communications & Fire Protection More Reliable & Cost-Effective!

Appleton Debuts Linmaster™ Zone 2 LED Linear Luminaire for International Markets

Energy Efficient LED Luminaire Meets IECEX/ATEX Hazardous Location Requirements

To provide industrial and hazardous environments with a safer, more cost-effective pathway from fluorescent lighting to energy-saving LED technology, Appleton is pleased to announce its new ATX™ Linmaster™ LED Series of non-metallic linear LED luminaires. Appleton ATX Linmaster™ luminaires are suitable for installation in Zone 1, 2 (flammable gas) and Zone 21 and 22 (combustible dust) atmospheres in accordance with ATEX and IECEX international hazardous area classifications. Optimized for new installations and retrofit projects, the new luminaires are ruggedly built for service in oil refineries, food processing plants, waste treatment centers, and other demanding industrial locations where its impressively high efficacy can reduce energy consumption by up to 70 percent.

“Due to high efficacy requirements in Europe and around the world, there is significantly increased demand for replacing legacy fluorescent with LED,” said Amine Haneche, International Lighting Product Marketing Manager, Emerson Automation Systems, Appleton. “With the new ATX Linmaster™ Series, we are providing an easy-to-install, high-efficacy solution for retrofit and greenfield projects, plus we’ve added options to better satisfy evolving needs.”

Appleton thoughtfully designed the ATX Linmaster™ using the same mounting footprint as older Appleton FE & FN Series fluorescent luminaires and FELED & FNLED Series LED luminaires, making retrofitting faster and trouble-free. To help the facility maintain the same feel as the original fluorescent, the new luminaires offer a full range of lumen outputs with light distribution equivalent to the Appleton linear fluorescent and linear LED Series.

ATX Linmaster™ luminaires are exceptionally lightweight, ultracompact and feature a low profile for cramped spaces. Color temperatures of 5000K, 4000K, 3000K and 2200K provide versatility in selecting the ideal setting for a safer, more productive workplace, as does the 0-10V dimming capacity. An optional green LED model is also available for safety showers or other applications.



For more information, visit
www.masteringled.com/smartled



Milwaukee® Delivers the Longest Reach for Lighting in Tight Spaces

LAUNCH DATE: July 2024
MSRP: \$279

Milwaukee continues to deliver innovative lighting solutions for the professional jobsite with the introduction of the M18™ Magnetic Extendable Boom Light. The new light delivers best-in-class maneuverability, allowing for light to extend into hard-to-reach places during tight applications. With the addition of the M18™ Magnetic Extendable Boom Light, Milwaukee continues to deliver lighting solutions that adapt, perform, and survive on the toughest jobsites.

The M18™ Magnetic Extendable Boom Light delivers 2,500 Lumens of TRUEVIEW™ High-Definition Output* and features 3 modes to manage output and run-time, depending on the needs of the job. When paired with an M18™ XC5.0 Battery, the light provides all day runtime with up to 12 hours of run-time on low.

Designed with two articulating arms, the M18™ Magnetic Extendable Boom Light provides the longest reach in tight spaces. The three swivel points deliver 900 degrees of vertical rotation and 890 degrees of horizontal rotation, providing complete light head adjustability. The light's carrying handle also functions as a release mechanism for the strong magnetic base providing fast and secure adjustments to ferrous surfaces. Every M18™ Magnetic Extendable Boom Light comes with a Protective Storage Boot, providing surface shielding when storing the light on toolboxes or sensitive surfaces. The Protective Storage Boot consists of 2mm thick, tear resistant and chemical resistant rubber.

Built to withstand the toughest conditions, the M18™ Magnetic Extendable Boom Light is impact resistant and IP54 rated to protect against dust and water. The light is a part of Milwaukee Tool's 5-year tool warranty and a limited lifetime LED warranty.

The new M18™ Magnetic Extendable Boom Light is fully compatible with the entire M18™ line, now offering more than 250 solutions.

*TRUEVIEW™ Technology and optical design delivers a consistent beam, optimized color temperature, and true representation of colors and detail leading to a more productive work area.

Includes: M18 Magnetic Extendable Boom Light and Protective Storage Boot

For more information, visit
www.milwaukeetool.com

**In stock in
Everett, WA**

**Large
Inventory**



SILTEC®

Stainless Steel Cable Trays



www.siltec.us

For more information:

(+1) 425.328.1006

siltec@siltec.us

11604 Airport Rd, Ste. D100, Everett, WA 98204

Alloy LED Launches Flexible, Field-Cuttable, High Performance FocaLine 6 Wall Grazing Luminaire

- Narrow 10-degree optical distribution provides dramatic result by highlighting architectural details and textures while creating pronounced shadows
- Flexible and field-cuttable every 6 inches
- An array of accessories includes adjustable brackets for precise positioning and optional anti-glare hex louvers to minimize glare
- IP68-rated for wet locations with factory-sealed connections when ordered with the company's customization department

Alloy LED, a leading designer and manufacturer of premium quality LED tape lights, is pleased to announce the launch of the FocaLine 6, a flexible, field-cuttable wall grazer with a narrow 10-degree optical beam spread for precise wall grazing for a wide range of ceiling heights. The FocaLine 6 is offered with an array of accessories – from mounting clips to louvers – to transform indoor and outdoor commercial and residential spaces.

"The multi-element optic utilized in our FocaLine 6 provides a dramatic result by highlighting architectural details and textures utilizing a narrow 10-degree optical distribution to precisely illuminate the raised features on the wall while creating pronounced shadows in recessed areas," said President Joe Flynn, Alloy LED.

The 24-volt wall grazer is only 0.78 inches wide and 0.4 of an inch in height and consumes 6 watts per foot, while providing up to 473 lumens per foot. Offering an impressive, high performance 4000+ peak center beam candela, FocaLine 6 also provides exceptional color quality with a 95+ color rendering index and high R9 and R13 values. The luminaire is offered in 2700K, 3000K, 3500K and 4000K color temperatures. The product is dimmable and designed to last 50,000 hours.

Field-cuttable every 6 inches, the linear light can be mounted continuously up to 33 feet. Optional mounting accessories include an adjustable mounting bracket that provides precise positioning, ensuring optimal illumination angles. Additional accessories include a unique, snap-on, anti-glare hex louver, offered in black or white, to cut down on glare, as well as connectors and tape-to-tape flexible extensions. Optional power supplies and controls are available.

Offered with a black aluminum channel as part of a 4-foot kit, the kit also includes a snap-in lens, end caps, inner clips and mounting clips with screws, and two straight connectors with screws.

FocaLine 6 is California's Title-24 JA8 and RoHS compliant, and UL Listed. When ordered through the company's customization department, FocaLine 6 is IP68-rated for wet locations with factory-sealed connections. The wall grazing luminaire is also CE compliant, meeting requirements of relevant European product safety legislation. The luminaire has a six-year warranty. All Alloy LED products are backed by its guarantee of satisfaction.



For more information, visit
www.alloyled.com/focaline-6-flexible-grazer

Universal Downlights

RCF SERIES, 0-10V Models & Triac Models

The Universal Commercial - RCF Series downlights are an economical, all-in-one solution for adding recessed downlighting to hospitality, retail, office and other commercial lighting applications. The downlight is designed with an integral whip, which connects directly to a junction box (Existing or independently mounted), and a universal driver that eliminates the need for a traditional recessed housing, saving installers time and money, reduces glare for soft, eye-pleasing illumination.



- Wattage and CCT Selectable
- 4", 6", 8" & 10" sizes
- 0-10V & Triac dimming models
- IC rated and wet location listed
- c-Max™ Controls Compatible*
- ENERGY STAR Listed
- Mounts directly into ceiling, no housing required

For more information, visit
www.maxlite.com

Affordable test equipment for 2024



Spitfire - Buried Low Voltage Cable Fault Locator

- ◆ Accurate
- ◆ Easy to use
- ◆ High energy output
- ◆ Proven reliability
- ◆ Compact design
- ◆ Lightweight

Wayfind'r - Impulse cable tracer

- ◆ Accurate
- ◆ Easy to use
- ◆ Connects directly to energized cables
- ◆ Distinct signal for easy tracing
- ◆ Traces direct buried and cables in conduit
- ◆ Rugged, compact design

Impulse Phaser - Cable / phase system

- ◆ Accurately identifies cables in trenches, vaults, conduits and enclosures
- ◆ Accurately identifies phases in multi-conductor cables
- ◆ Identifies jacketed, shielded, cables, even in pipe
- ◆ Easy to understand and use



TIMCO INSTRUMENTS, LLC

Phone: (401) 539-7120 Fax: (401) 539-6018
www.timcoinstruments.com





SP PRODUCTS, INC.
Productivity and value thru ideas
FOR SAFER BETTER FASTER JOBS

2023 NECA
ShowStopper
WINNER

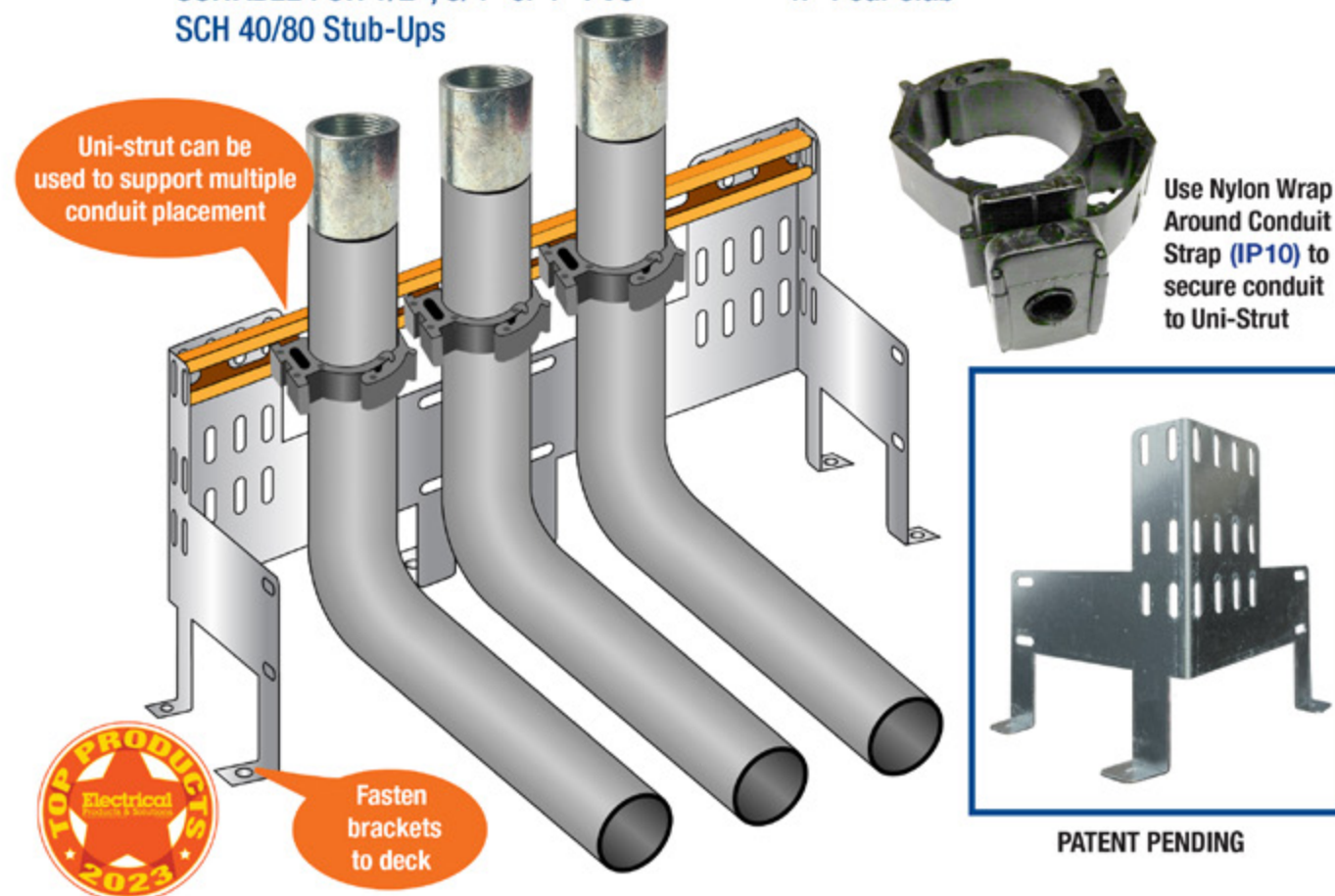


EZ Stub-Up SUPPORT BRACKET

- Support and secure multiple conduits and sizes with brackets and/or uni-strut at a single stub-up location
- Use nylon wrap around conduit straps, minerllacs, one-hole straps or Ty wraps to secure conduit to bracket or uni-strut
- 16 guage galvanized steel
- SUITABLE FOR 1/2", 3/4" or 1" PVC SCH 40/80 Stub-Ups

INSTALLATION:

1. Position bracket on deck before the concrete pour
2. Fasten bracket to deck
3. Secure conduit to bracket or uni-strut with nylon wrap around conduit straps, minerllacs, one-hole straps or Ty wraps
4. Pour slab



Perfect for Poured Precast Decks!

SP PRODUCTS, INC.
Productivity and value thru ideas



PATENT PENDING
PATENTED

LABELS APPLY TO PRODUCTS ONLY WHERE SHOWN ABOVE



730 Pratt Boulevard • Elk Grove Village, IL 60007
P: (847) 593-8595 • F: (847) 593-8629 • Toll-free (800) 233-8595
E: info@spproducts.com • www.spproducts.com

Leviton Expands Popular Decora Smart Z-Wave Plus Line with New 800-Series Switch and Dimmer

Designed for modern Z-Wave hubs, new dimmer and switch make it easier than ever to add smart lighting control

Leviton recently announced a major upgrade to its Decora Smart Z-Wave Plus™ portfolio with the introduction of the new 800-Series Switch (ZW15S) and Dimmer (ZW6HD). The new 800-Series devices are backwards compatible with any Z-Wave network, ensuring interoperability with a wide range of modern Z-Wave hubs and security systems, including Samsung SmartThings™, Ring Security, Alarm.com, and Home Assistant, providing users with a safe and secure smart home experience.



The new dimmer and switch are Z-Wave Plus v2 certified and meet the Z-Wave specification for speed and performance as well as S2 Security, Over the Air firmware updates, and SmartStart QR code enrollment.

“We are excited to offer customers the new Decora Smart 800-Series switch and dimmer, providing them with enhanced Z-Wave functionality as well as more features to personalize lighting control in their homes,” said James Shurte, senior product manager of smart home for Leviton. “These products continue to build on both our Z-Wave expertise and provide our customers with the latest in smart home technology.”

The Decora Smart Z-Wave 800-Series Dimmer and Switch are also ideal for larger projects such as multi-family apartment and condo installations. The devices’ compatibility with SmartStart enrollment makes it easy to add devices to Z-Wave hubs, allowing for off-site commissioning.

“At SmartThings, we are dedicated to providing our users with a wide array of options within our ecosystem for their smart homes. The launch of Leviton’s new 800-series dimmers and switches introduces cutting-edge advancements in mesh wireless technology, security, and reliability, delivering a robust solution for all smart home enthusiasts,” said Mark Benson, Head of SmartThings US.

The new dimmer offers full-range dimming of LED, CFL, Incandescent, Halogen, and MLV lighting and is designed for LED compatibility with features to fine-tune performance. Custom settings are available to personalize your experience, configurable via the device or over the Z-Wave network. The 800-Series Switch controls a variety of load types, with on/off switching up to 15A and 3/4 HP for lights, ceiling fans, exhaust fans, motors, pumps, and more. Both the dimmer and switch are single-pole or 3-way capable.

Leviton’s Decora Smart Plus Z-Wave line also includes a Fan Speed Control, Outlet, and Smart Plugs. Customers can match their style for in-wall devices at any time with color change kits available for Z-Wave line products in black, gray, brown, light almond, and ivory. For more information about the full Leviton Z-Wave Plus product line, please visit <http://www.leviton.com/z-wave>

For more information, visit
www.leviton.com

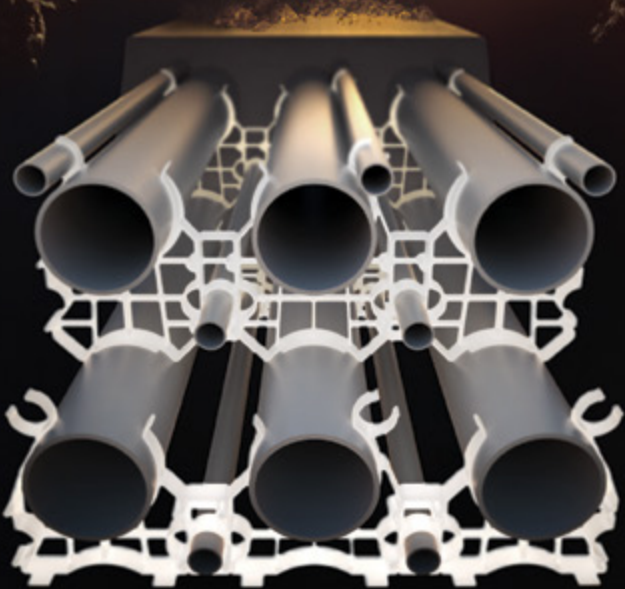
Kwikon® Electrical Nonmetallic Tubing

Kwikon® Electrical Nonmetallic Tubing (ENT) stands out with its exceptional strength and flexibility, making it the ideal choice for various construction applications. Kwikon® ENT is noncorroding and nonconducting, ensuring durability even when encased in concrete or concealed in walls. Its unique corrugated construction allows easy hand bending without special equipment, saving time and effort on the job site. The six-locking tab Kwikon® couplings and connectors ensure a secure and integrated system, eliminating the need for solvent welding or tape around connections. Made of impact-resistant PVC, Kwikon® ENT is tough enough to withstand crushing and breaking, offering reliability and longevity for residential, commercial, and institutional projects.

For more information, visit
www.Ipexna.com



THE SECRET TO
UNDERGROUND
POWER
TRANSMISSION



OUR WUNPEECE TRANSMISSION SPACERS REDEFINE THE INDUSTRY STANDARD FOR UNDERGROUND POWER TRANSMISSION INSTALLATIONS. WITH PRECISION ENGINEERING AND UNMATCHED QUALITY,

JOIN THE RANKS OF INDUSTRY LEADERS WHO TRUST UNDERGROUND DEVICES FOR THEIR POWER TRANSMISSION NEEDS.



VISIT WWW.UDEVICES.COM

AND EXPERIENCE THE FUTURE OF UNDERGROUND POWER INSTALLATION

High-end Lighting Control for the Latest Mixed-use Complex in Vietnam

Tridonic supplies state-of-the-art lighting technology for the 354,000 square metre Lotte Mall West Lake Hanoi

AT A GLANCE

Customer:
Lotte Construction Management

Contractor Luminares:
HYOSUNG LIGHT

Lighting Design:
Mavericks Luminares: RAAT, E-LIKO

Contractor Lighting Control:
KWANGIL Lighting

Lighting Control System Configuration and Commissioning Services:
Tridonic

Completion:
July 2023



The Lotte Mall in Hanoi, recently completed at a cost of 634 million US dollars, is one of the largest shopping centres in Asia. The company behind the project, the multinational Lotte Group, a top-five South Korean company, chose Tridonic to provide the lighting control system for the mall. The Lotte Mall, which had its grand opening in September 2023, has a highly automated lighting system with programmable profiles that ensure optimum lighting conditions and low energy consumption at all times.

Lotte is a South Korean conglomerate with 90 business units. It was founded in 1967 and is active in the food, retail, chemical, hotel, construction, rental,

logistics and healthcare sectors. Lotte Mall West Lake Hanoi is a combination of a hotel, shopping arcades, apartments, offices, an aquarium, art exhibitions and a cinema complex. It is located on West Lake, Hanoi's largest freshwater reservoir. The architecture of this complex is truly impressive with its pixel design, its facades of offset box structures and four high-rise towers, each around 100 metres high.

Its interior design is as unusual as the exterior. The challenges for the lighting designers came from the very different demands, ranging from daylight-dependent lighting for the produce in the food stores to effective lighting for the large murals in the gallery.



Project Partners

Lotte and Tridonic have been collaborating on various projects for four years. When the new project for Hanoi was being planned Tridonic was able to present its flexible, fully wireless lighting control system directly to the Lotte shop lighting designers and the Lotte engineering and construction managers. This presentation, together with its proven expertise in implementing large-scale projects won it the contract.

Tridonic collaborated with various local and international partners on the project and contributed its expertise as a planner, project manager and implementer. The direct customer and provider of the LED drivers and lighting control for Lotte was KWANGIL Lighting. Luminaire suppliers RAAT, E-LIKO and HYOSUNG LIGHT were responsible for installing all the luminaires for Lotte Mall West Lake Hanoi. These partners valued the high level of service Tridonic offered at each phase of the project and the support from its highly trained personnel on site.

Fully Wireless

Tridonic's lighting control elements are used throughout the building complex (hotel, mall, offices and food store) and operate entirely wirelessly. The decision not to lay any cables but to provide a fully wireless solution was preceded by a detailed cost analysis. The calculations showed that a wireless solution was much more cost effective in a new building.

ABOUT TRIDONIC

Tridonic is a world-leading supplier of lighting technology, supporting its customers with intelligent hardware and software and offering the highest level of quality, reliability and energy savings. As a global driver of innovation in the field of lighting-based network technology, Tridonic develops scalable, future-oriented solutions that enable new business models for lighting manufacturers, building managers, systems integrators, planners and many other types of customer.

To promote the vision of the "Internet of Light", Tridonic relies on partnerships with other specialists. The goal is the joint development of innovative technological solutions that convert lighting systems into intelligent networks and thereby enable associated services. Tridonic's in-depth industry expertise makes it an ideal driver for partnerships with other visionaries.

Tridonic is the technology company of the Zumtobel Group and is headquartered in Dornbirn, Austria. In the 2022/23 fiscal year, Tridonic achieved sales of 367.3 million euros. 1,687 highly skilled employees and a worldwide sales presence in over 70 countries provide the basis for developing and launching new, smart and connected lighting systems.



basicDIM Wireless Application Controller as the Infrastructure for Lighting Control

Tridonic supplied 20 basicDIM Wireless passive module G2 application controllers and more than 1,500 drivers for the various luminaires. The application controllers can be managed wirelessly via an Android or iOS device and do not require a gateway. They automatically set up a wireless communication network with up to 250 nodes and have a digital, DALI-compatible output. Bluetooth BLE is used as the wireless protocol, which is particularly energy-efficient. The lighting control system was set up in the project by a Tridonic employee from South Korea.

"It was important for us to show that wireless installations operate really well, especially for large-scale professional projects, and lead to significant cost savings. Customers in Vietnam are increasingly focusing on good lighting and extensive automation," said project manager Mark Kim of Tridonic. □

advertiser
INDEX

This advertiser index is compiled as a courtesy to our readers. While every effort is made to provide a complete and accurate listing of companies and page numbers, the publisher is not responsible for errors. **Click the company name or page number to see their advertisement.**

Company	PG#	Company	PG#
APPLETON / EMERSON	15	RANDL INDUSTRIES	21
APPLETON / EMERSON	17	SILTEC USA, INC	23
CONDUIT REPAIR SYSTEMS	4	SP PRODUCTS INC	3
ELECTRI-FLEX COMPANY	13	SP PRODUCTS INC	19
iTOOLco	IFC	SP PRODUCTS INC	26, 27
iTOOLco	IBC	SP PRODUCTS INC	BC
KRENZ & COMPANY	32	TIMCO INSTRUMENTS, LLC	25
KUIKBOX	1	UNDERGROUND DEVICES	5
MILLER SAFETY CONSULTANTS, LTD	7	UNDERGROUND DEVICES	29

When it comes to transformer cooling fans, Krenz-Vent is the industry recognized gold standard. Our leadership position is earned through 80+ years of R&D plus our superior engineering and customer service. You can rest easy when you specify Krenz fans.

ENGINEERED TO COOL
There is no comparison.



KRENZ & COMPANY, INC.

KRENZVENT.COM • 262.255.2310 • KRENZ@KRENZVENT.COM

ALL THE INFORMATION YOU NEED IS JUST A CLICK AWAY AT **WWW.EPSMAG.NET**

Electrical Products & Solutions

Transition Couplings
PVC Bell End Adapter
Galvanized Rigid Conduit - 1/2" thru 6"

Warming Up to Electrical Heating Cables

WHAT'S NEW

Conduit Repair Systems, Inc.
The World Leader in Split Conduit Products

EPS Magazine in Your Inbox

DMF Lighting Expands its M Series Commercial Collection with High Lumen Packages for Hospitality and Mix-Use Spaces

New Multi-Tester from Klein Tools® Combines Core Electrical Products into One Model

RPS Launches SlimWave Filter To Safeguard Motor and Cables

CORDLESS CANNON 6K

iTOOLco.
WWW.iTOOLco.com | 865.670.3713

f i t y in

TOP PRODUCTS 2022
Electrical Products & Solutions

Speed, versatility, and performance are all yours with iTOOLco's Cordless Cannon 6K™. This portable 6,000 lb. puller is intuitively designed to handle all of your day-to-day wire pulls.

The built-in capstan switch automatically turns the puller on and off. Simply tug on the rope to start the pull and slack off the rope to shut it down. Delivers dynamic performance in remote locations or areas where power is not yet available.

SCAN ME





SPPRODUCTS, INC.

Productivity and value thru ideas
FOR SAFER BETTER FASTER JOBS



We're Proud to be the Electricians' Friend for Over 50 Years!

IP5

"The Original"

Enter Any KO on Both Sides of the Box



IP19/20

4-Conduit Block
PATENTED

IP21a

QwikBlock
PATENT PENDING

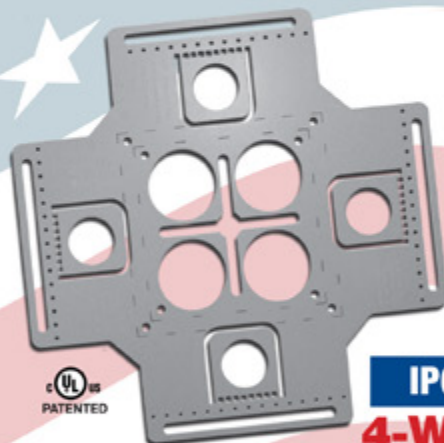
Use 4-Conduit Block (IP19 or IP20) with QwikBlock (IP21a)

IP6d

2-Way
with Split Fingers for Horizontal or Vertical Installation



Our Family of Conduit & Box Support Plates Saves Valuable Time & Money!



IP6

4-Way

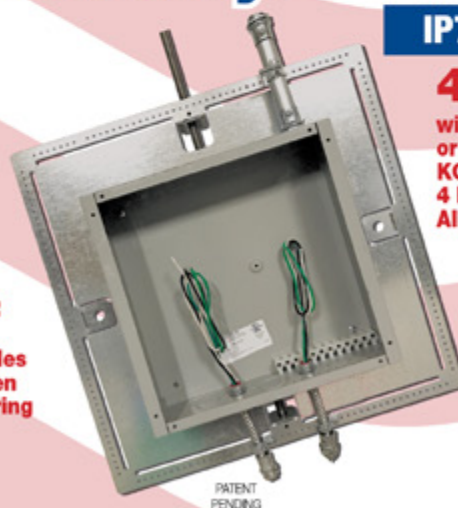
Enter Any KO on All 4 Sides of the Box Plus 4 Large Open KOs in Center Allows Entering Back of Box



IP6a

2-Way/Half

Enter Any KO on 1 or 2 Sides of the Box Plus Large Open KOs in Center Allows Entering Back of Box



PATENT PENDING

IP7

4-Way

with Split Fingers for Horizontal or Vertical Installation. Enter Any KO on All 4 Sides of the Box Plus 4 Large Open KOs in Center Allows Entering Back of Box.

IP8

Mount Horizontally or Vertically from One Single Support

20 x 20

Supports up to 12 x 12 J-Box

28 x 28

Supports up to 20 x 20 J-Box

MADE IN THE USA!

Plus More Being Invented for **SAFER BETTER FASTER** Jobs . . . Call With Your Ideas!

SPProducts.com **800-233-8595** info@SPProducts.com