

OCTOBER 2024

Electrical

Products & Solutions

The Purchasing Guide for Electrical Contractors

www.epsmag.net



**Advances in
Switchgear
Technology**

iTOOLco.

CANNON 12K

**THE TOUGHEST
WIRE PULLER YOU'LL EVER USE!**



EXTRA EXTENSIONS:
giving you up to 13' of wire from
the conduit opening.



SIX SPEEDS:
Dual capstans with 3 speeds
on each AND reverse gear!



12,000 Lb. pulling capacity.



Dual capstans with a 3
speed motor.



Overhead, underground
and side pull capabilities.

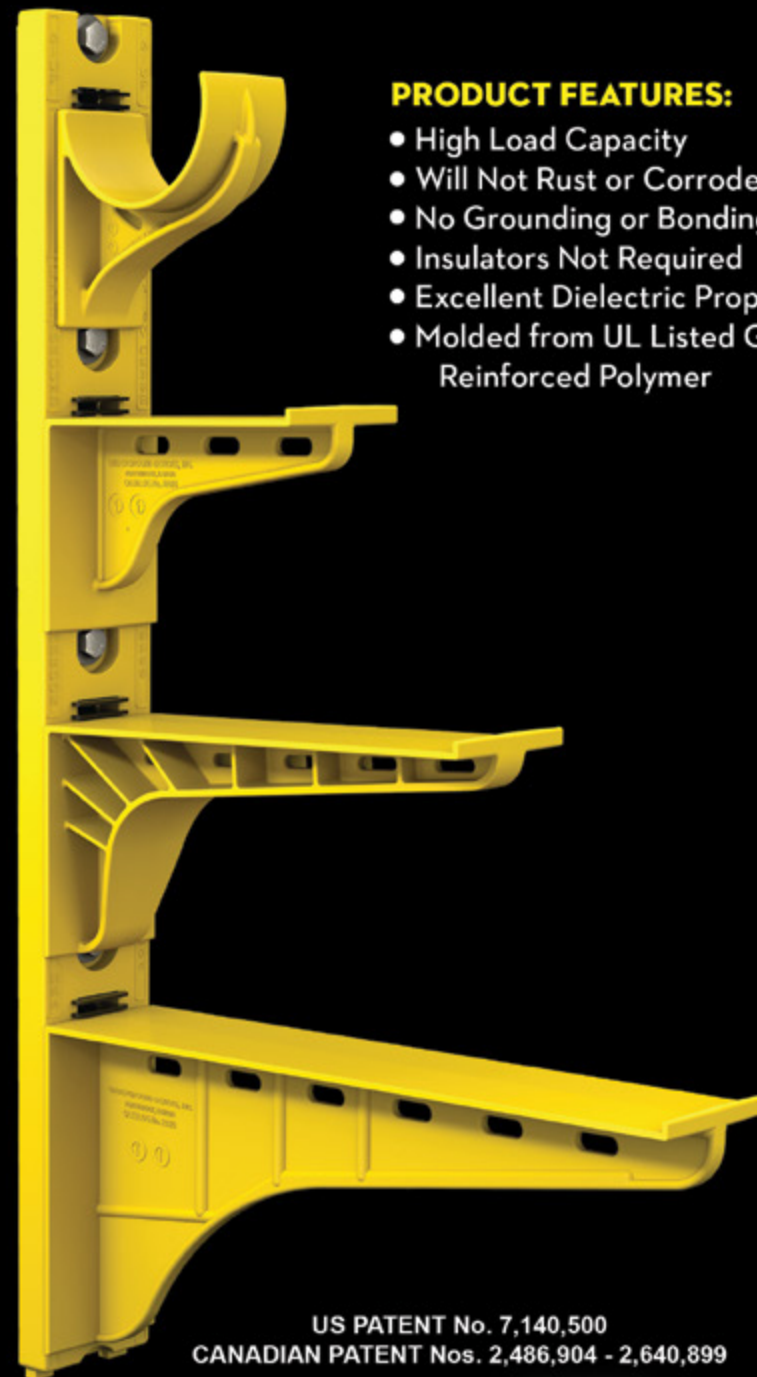
The Heavy Duty Nonmetallic CABLE RACK

For Power and Communications Manholes And Vaults



PRODUCT FEATURES:

- High Load Capacity
- Will Not Rust or Corrode
- No Grounding or Bonding
- Insulators Not Required
- Excellent Dielectric Properties
- Molded from UL Listed Glass Reinforced Polymer



US PATENT No. 7,140,500
CANADIAN PATENT Nos. 2,486,904 - 2,640,899



HDL Arm Lock shown with
RA04 Arm and CR36-B Stanchion



3HDS - 3" throat saddle shown with
a cable secured by cable ties.



RA08 - 8" arm shown with three
cables secured by cable ties.

UNDERGROUND DEVICES
INCORPORATED



420 ACADEMY DRIVE
NORTHBROOK, IL 60062
Phone: 847-205-9000 • Fax: 847-205-9004
Website: www.udevices.com

Electrical Products & Solutions™ issue sponsors



COMPANY PROFILE

6 Protect Yourself
Miller Safety Consultants —
A Leader in Arc Flash Protection
BY VINCENT MILLER

COVER STORY

8 Advances in Switchgear Technology
BY JOHN EDBURG

DEPARTMENTS

14 INDUSTRY NEWS
25 NEW PRODUCTS
32 AD INDEX

ON THE COVER

Photo courtesy of Enercon



Electrical Products & Solutions™

The Purchasing Guide for Electrical Contractors www.epsmag.net

PUBLISHER
Danny J. Salchert

OFFICE MANAGER
Anita Salchert

CREATIVE DIRECTOR
Derek Gaylard

CIRCULATION DIRECTOR
Pam Fulmer

CONTRIBUTING WRITERS
Vincent Miller • John Edburg



PRESIDENT
Danny J. Salchert

EXECUTIVE AND
ADVERTISING OFFICES
2009 Eagle Ridge Drive
Birmingham, AL 35242
phone: 205.981.4541
www.epsmag.net
danny@epsmag.net

Electrical Products & Solutions™ is published twelve times a year on a monthly basis by ABD Communications, Inc., 3591 Cahaba Beach Road, Birmingham, Alabama, 35242, USA. *Electrical Products & Solutions™* is distributed free to qualified subscribers. Non-qualified subscription rates are \$57.00 per year in the U.S. and Canada and \$84.00 per year for foreign subscribers (surface mail). U.S. Postage paid at Birmingham, Alabama and additional mailing offices. *Electrical Products & Solutions™* is distributed to qualified readers in the electrical contracting industry. Publisher is not liable for all content (including editorial and illustrations provided by advertisers) of advertisements published and does not accept responsibility for any claims made against the publisher. It is the advertiser's or agency's responsibility to obtain appropriate releases on any item or individuals pictured in an advertisement. Reproduction of this magazine in whole or in part is prohibited without prior written permission from the publisher.

POSTMASTER: Send address changes to
ABD Communications, Inc., P.O. Box 382885
Birmingham, Alabama 35238-2885

FOLLOW US ON



SP PRODUCTS, INC.

Productivity and value thru ideas
FOR SAFER BETTER FASTER JOBS

We're Proud to be the Electricians' Friend for Over 50 Years!

**NEW
PRODUCT!**

IP1 Qwik Duct Safer Better Faster

IP3b
IP3c

IP10a

EZ STUB-UP

Join two EZ Stub-Ups with strut to support and secure multiple stub-ups on wooden forms before concrete pour for sizes 1/2", 3/4", 1" & 1-1/4" stub-ups with SP's Nylon Support Brackets and transition to RGB with our transition couplings.

HDPE CUSTOM TEMPLATES In Any Configuration Required



Patent Pending

PVC Offset

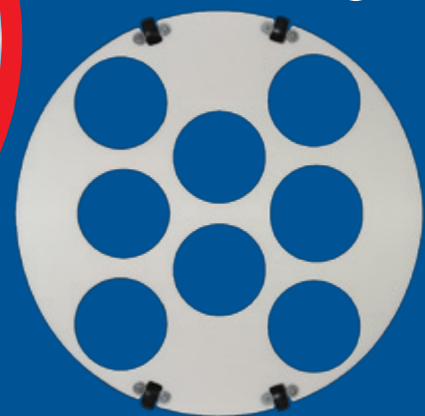
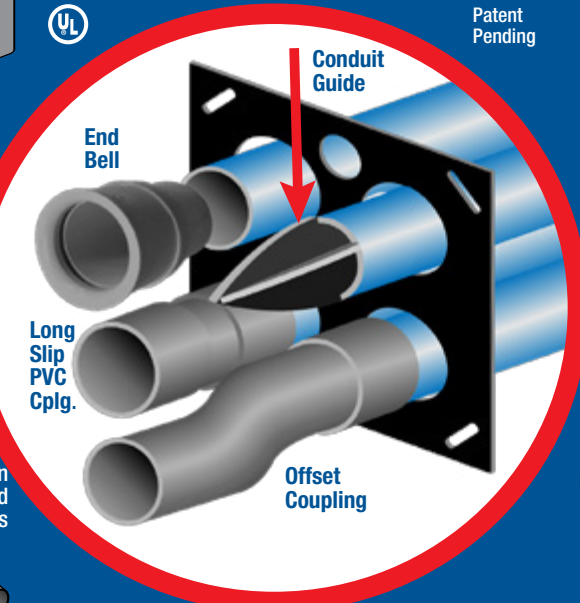
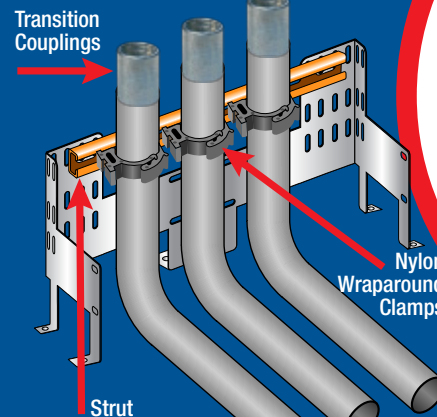
Sizes 1/2" thru 6"
Meets Flexible
Madrel Test
Requirements

Patent Pending

Bore Spacers

Sizes 1/2" thru 6"
Roll assembled conduit
into caissons and under
obstructions

IP2a



IP13a-p

Conduit Transition Couplings



PVC schedule 40 & 80

Patent Pending

Transitions in Less Than

5 Minutes



IP3a

End Bell
Adapter
Schedule
40/80 PVC



Patent Pending

PVC/Liquidtite

PVC/MC Cable

PVC/EMT

PVC/PVC

PVC/Stainless

PVC/Aluminum

Bell End/Rigid

PVC Slip/Rigid

IP15

1 Piece
Reaming Bit
1/2" thru 6"
Schedule 40/80

Save Cost on the Rigid Nipple, Tape & Labor
Use for Entire Job - Not Just for Repair

Plus More Being Invented for SAFER BETTER FASTER Jobs... Call With Your Ideas!

SPProducts.com 800-233-8595 Info@SPProducts.com

REPAIR CONDUIT IN A SNAP!

No Tape • No Plastic Straps • No Metallic Straps

NO KIDDING!

Designed especially for power, communications and fiber optics.



STEP 1
Remove damaged conduit

STEP 2
Cut split duct conduit to fit

STEP 3
Snap in place

STEP 4
Attach adapters

STEP 5
Finish job in record time

“The World Leader In Split Conduit Products”



Conduit Repair Systems, Inc.
The World Leader In Split Conduit Products



800.670.1804 • 435.673.8724 fax • crs@conduitrepair.com • www.conduitrepair.com

Affordable test equipment for 2024



Spittfire - Buried Low Voltage Cable Fault Locator

- ◆ Accurate
- ◆ Easy to use
- ◆ High energy output
- ◆ Proven reliability
- ◆ Compact design
- ◆ Lightweight

Wayfind'r - Impulse cable tracer

- ◆ Accurate
- ◆ Easy to use
- ◆ Connects directly to energized cables
- ◆ Distinct signal for easy tracing
- ◆ Traces direct buried and cables in conduit
- ◆ Rugged, compact design

Impulse Phaser - Cable / phase system

- ◆ Accurately identifies cables in trenches, vaults, conduits and enclosures
- ◆ Accurately identifies phases in multi-conductor cables
- ◆ Identifies jacketed, shielded, cables, even in pipe
- ◆ Easy to understand and use



TIMCO INSTRUMENTS, LLC

Phone: (401) 539-7120 Fax: (401) 539-6018

www.timcoinstruments.com



Protect Yourself

Miller Safety Consultants — A Leader in Arc Flash Protection

Vince Miller started Miller Safety Consultants, a veteran owned business in 1999. The goal of the business was to provide cost effective safety consulting, employee training such as: confined space entry, fall protection, electrical safety and provide sales of electrical shock and flash protective equipment and fall protection equipment to businesses in the Washington DC area.

Reliance Industries provided fall protection products and much of the sales and training was on behalf of the supplier. In 2000, the owner decided to retire from his business, and Vince decided to discontinue the fall protection line of his business and concentrate more in the electrical training and products.

Vince had been a distributor for Certified Insulated Products (CIP), a manufacturer of electrical insulated tools and electrical arc flash clothing manufactured by Otex in Rochester, New York. As a distributor, Vince provided sales through his internet website and much through relationships with electrical contractors. His training was a classroom environment and was provided directly to customers but he also taught as a sub-contractor for other safety consulting companies and the

Chesapeake Safety Council in Baltimore, Maryland. In 2005, Vince partnered with Vivid Learning Systems in Cascades, Washington to provide on-line training in safe work practices.

Training in electrical safe work practices is still provided locally in the Washington DC area and as a partner with an electrical engineering firm and online. The training is based on the Occupational Health and Safety Administration (OSHA) standards and the National Fire Protection Association (NFPA) 70E standard.

Miller Safety Consultants is now a distributor for Cementex USA, Burlington, New Jersey, for insulated tools and equipment and clothing from OTEX Protective, Rochester, New York.

The majority of his sales of products

are from the web-based store. Cementex is nationally known for their quality equipment. Otex Protective is becoming more known for their quality clothing. For years, they have manufactured their products under other provider labels. Vince chose to not create his clothing line, but to sell the manufacturer product.

Vince has worked with many electrical company employees to fine-tune the clothing to be more comfortable for the user. Working closely with the manufacturer, they have made slight changes in how the cloth pattern was modified to meet final production. An example is the lightweight 40 Calorie vented hood offered by Otex.

The material is of the latest technology. The vented assembly is constructed for balance on the back of the hardhat and the airflow is 27 CFM to prevent fogging of the face shield and provide cooling to the worker. It took over a year to develop the product with the user prior to having the hood "flash tested". This product is now standard issue with many electrical contractors.

Being a small business and having quality providers has resulted in satisfied customers for Miller Safety Consultants. Being a direct supplier for OTEX Protective, another small business means customized customer needs can be met. □

For more information, visit
Miller Safety Consultants at:
www.electricalsafety.com, email
Vince at: sales@millersafetyltd.com.

AUTHORIZED
Cementex
The Safety Tool Specialists
DISTRIBUTOR

Give Vince a call at
(703) 367-0404



Deluxe Maintenance Tool Kit



Class O Glove Kit

Protect yourself from "Arc Flash"



ARC FLASH LIFT-FRONT HOOD WITH V¹² HIGH-VOLUME VENTILATOR
Compact. Powerful. Reliable

Our V¹² High-Volume Ventilator boasts an unexpectedly quiet, high output (35+ CFM) turbine fan to cool and circulate the ambient air within the hood. Fully protected beneath it's durable ABS shell and added fabric layering, the V¹² High-Volume Ventilator isn't just compliant, it's superior.



40 CAL/CM2 ULTRALIGHT CLOTHING BY OTEX

Our new dual-layer Ultralight clothing takes advantage of DuPont's® dedication to scientific advancement and Westex's® industry leading dependability. Weighing in 37% lighter than traditional HRC4 PPE, our Ultralight Clothing is the most innovative contender in the lightweight arena.

HYBRID LAYERING

Combined Fabric Weight: 14 oz

Outer Layer: DuPont® Protera
Color: Navy

Inner Layer: Westex Ultrasoft
Color: Safety Orange



CALL US TODAY
(703) 367-0404

OR VISIT OUR ONLINE ELECTRICAL SAFETY EQUIPMENT STORE
www.electricalsafety.com



TRADITIONAL ELECTRICAL DISTRIBUTION SYSTEMS operate autonomously and lack comprehensive feedback as to the status of the energy resources available. When there is a fault it's noticed by the lack of power and then the fault needs to be determined usually by an operator inspecting the various circuit breakers that could be affected.

ADVANCES IN SWITCHGEAR TECHNOLOGY

BY JOHN EDBURG



Advances in modern switchgear technology aims to reduce unexpected downtime by providing real time status of the energy condition and resources available to keep the “lights on”.

Innovations in electrical switchgear can increase efficiency, reduce human workloads, improve environmental outcomes, and give operators more data and control. We’ll take a look at some of the most important advances in switchgear technology occurring today and how they benefit their different use cases.

Increased Digitalisation

While initially not a forerunner of the Industrial Internet of Things (IIoT), which focused more on capital-intensive rotating equipment, electrical switchgear has recently become increasingly digitized. This has come about via embedding new technologies in custom-built switchgear and retrofitting older equipment.

The digital components include microprocessor based controllers with built in communication modes, enabling remote data collection to building management software where analytic software tools can further prompt facility managers to make system wide adjustments remotely. The addition of these digital controls gives operators real time information on the status of the power resources while limiting direct physical contact with electrical switchgear. Remote operations can include opening and closing of circuit breakers, remote racking of breakers,

load shedding non essential feeder loads when power availability is limited, to initiating a pre-emptive disconnect from the utility power grid during a storm and placing the facility in storm anticipation mode where the sites emergency generators can be brought on-line in the event of the local utility power having an outage due to storm conditions.

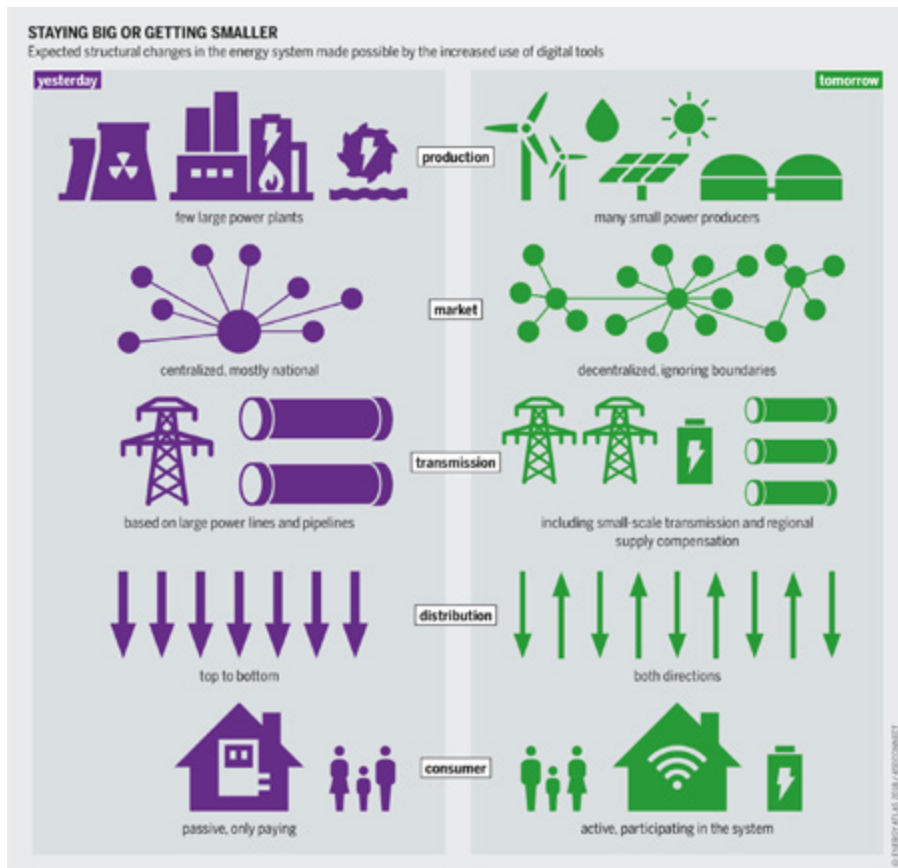
Advanced software simulators can create a ‘digital twin’ of a facility’s

electrical switchgear. Using historical data, the digital copy of a substation’s electrical distribution system for example, can be put through analytical modeling reviewing long-term usage, issues, and expected component deterioration. This provides a road map for preventative maintenance programs to watch for potential issues based on total operation time and kW routed through the switchgear. The goal to avert costly, unplanned shutdowns due to unexpected failure of a component within the switchgear.

By capturing and analyzing data in real-time, programs can be set to respond automatically to switchgear and process conditions, reducing labor hours, improving efficiency, and driving better decision-making.

Eco-friendly Switchgear

Addition of complex load sharing algorithms in the switchgear paralleling controllers aides in reducing the number of generators on-line to the minimum number to support the total load demand of a facility. Generators can be



AUTHORIZED DISTRIBUTOR OF



Deluxe Geared Maintenance Tool Kit

Cementex Double-insulated Tools:

- Comply with the IEC 900 standard
- Comply with ASTM F1505-01 standard
- Help you meet requirements of OSHA Safety Related Work Practices, NFPA 70E Standard and CSA-Z462

Cementex Double-insulated Tools are:

- Tested to 10,000 VAC and rated for 1,000 VAC when working on live parts
- Manufactured in the USA with domestic and global materials.
- Marked with the international safety symbol – (double triangle) 1000V

Class 00 Arc Flash Glove Kit

Class 00 arc flash glove kit from Cementex is a good option for a reliable kit for work with 500 Volts or less. The gloves are made of natural rubber construction, offering the required dielectric properties combined with flexibility, strength, and durability. Gloves feature rolled cuffs, and are anatomically shaped thereby reducing hand fatigue. Each glove is chlorinated for maximum comfort.

Components of Cementex IKG00-11 glove kit:

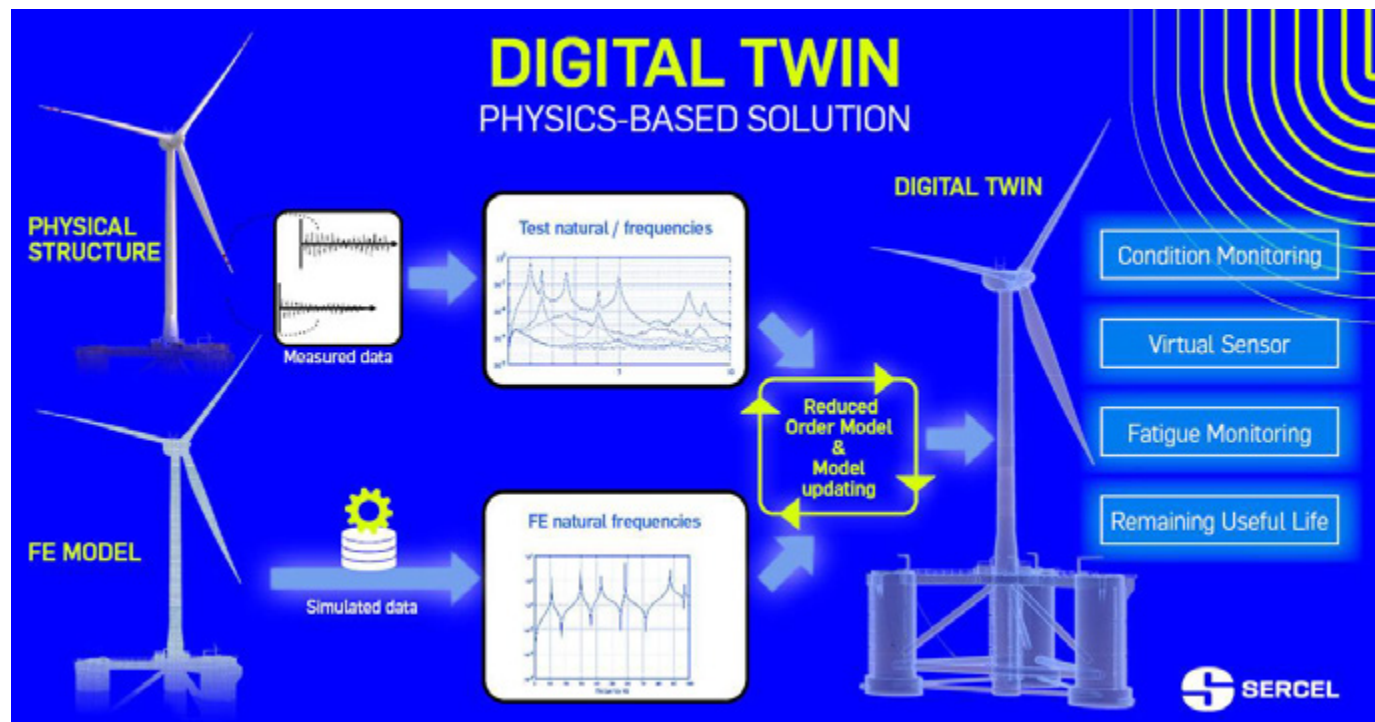
- 11” long Class 00 rubber insulating gloves
- Leather protectors
- Canvas storage bag



CALL US TODAY

(703) 367-0404

OR VISIT OUR ONLINE ELECTRICAL SAFETY EQUIPMENT STORE
www.electricalsafetyequipment.com



Compact switchgear designs take up less space on the floor of a facility, in the example of a data center where additional free space could be used for more server racks which translates into more revenue for a data center operator.

brought on-line in parallel with a utility power source to limit the amount of power purchased from the utility while supporting the facility load with on site power generation. As the load fluctuates, in real time, the digital controllers can walk-off generators to match the load, reducing the total carbon emissions for the facility while supporting the needed power loads.

Better Integration

Internet of Things (IoT) links multiple devices together to create a larger network of assets, for power generation, controls and switchgear; this means more visibility in real time for a plant operator to choose which power generation or power resource to utilize to support a facility's loads. Time of day rates from utility networks, peak demand costs vs fuel consumption and maintenance per hour on standby diesel generators or availability of solar

power from photovoltaic panels to even reserve power from on-site battery storage could be managed to provide the best economical usage for time of day and load. All managed remotely or even automatically based on a facility operator's preferences.

Modular Design

Innovative design and computer aided drafting tools have yielded space savings over traditional switchgear lineups. Compact and modular designs can also provide flexibility to a site to add circuits without a larger footprint or adding building square footage to accommodate more switchgear. 3D modeling allows switchgear designers to review the orientation, space and total materials before spending costly production hours and materials to build switchgear the traditional way, one piece of copper bar stock at a time. Digital designs can be reviewed and analyzed

for structural bracing, cost calculations, ampacity and thermal impact until the optimum solution is submitted to production. Saving time and materials on the production floor from costly rework issues. Compact switchgear designs take up less space on the floor of a facility, in the example of a data center where additional free space could be used for more server racks which translates into more revenue for a data center operator.

Conclusion

The Industrial Internet of Things is having a considerable impact on how electrical switchgear is made and used. Innovations including embedded controls and connectivity that feed data to remote centers for real time decision making. These advances in electrical switchgear have increased their functionality and delivered greater business value. □

John Edburg is the Head of Marketing at Enercon, where he drives the company's long-term marketing strategy. With extensive experience in B2B marketing and strategic initiatives, John has a proven track record in enhancing brand positioning and profitability across various industries.



Create a More Productive Environment with Retrofit Solutions

The Appleton™ Retromaster LED Series by Emerson is designed to upgrade outdated legacy lighting fixtures to LED to improve operational life and lower maintenance costs. Safely illuminate Class I, Division 2 locations with models providing up to 5000 lumen output in a compact footprint. With dual lumen outputs, the Retromaster LED provides a tailored retrofit solution for your facility.

Learn More at: www.masteringled.com



Appleton™ Retromaster LED Series Luminaires

APPLETON™

The Emerson logo is a trademark and a service mark of Emerson Electric Co. © 2024 Emerson Electric Co.

The Cannon 1K - 2024 NECA ShowStopper

iTOOLco is proud to present their latest NECA Showstopper, The Cannon 1K wire puller for pulls up to 1,000 lbs. Released earlier this year, The Cannon 1K has been a quick hit with their customer base - eliminating hand pulls on day to day small jobs and increasing efficiencies on the jobsite.

The Cannon 1K is great when working with branch circuits, data cables, fiber optic cables, & large pull ropes. With an impressive pull speed of up to 130' per minute, the built-in handle allows users to easily maintain control of the unit and is adjustable for both left and right handed user's. A quick release connector arm reduces setup time and the included slotted pulling head has an adjustable conduit clamp, allowing the user to secure the unit directly onto the edge of the conduit or panel while pulling for added stability. The articulating wedge arm is perfect for overhead applications, just push the arm to the top of the panel or box next to the conduit entry & run the rope to the capstan. The 1K's extendable pulling arm allows users to adjust the distance from the conduit opening or panels edge, with the option of adding an additional piece of 1" rigid to achieve longer distances. The removable capstan end plate makes taking the rope, mule tape, or string off after a pull simple. Just loosen the set screws holding the plate on, then remove it and slide the rope off the capstan. Lanyards on the stainless steel pins ensure no parts are



lost in between pulls. Guaranteed by our industry leading 6 year warranty & made in the USA.

"We are proud of our team & the dedication we have to releasing &

producing products that change the lives of our customers for the better." said Mike Jordan, Vice president. "Our customers are why we come to market, and we always strive to improve their day to day operations."

This showstopper award marks another in a number of awards iTOOLco has received over the years while attending the NECA convention. "Every year we try to put on a better show, making sure the customers who attend get to experience our products and services in an exciting way first hand." said Calvin Jordan - Director of Marketing. "We look forward to what we plan on bringing to NECA 2025!" □



Extend Luminaire Life While Reducing Energy Consumption

The Appleton™ Mercmaster™ Connect LED by Emerson is designed to illuminate hazardous and harsh industrial locations with integrated motion and illuminance sensors. Paired with Emerson's Plantweb Insight Connected Lighting Application, operators have access to lighting usage data and sustainability analytics.

The Mercmaster Connect LED provides facility managers with continuous monitoring of their LED lighting with real-time insights gained into sustainability goals, diagnostics and lumen levels from any remote location at dramatically lower costs as compared to wired alternatives, with faster installation time and minimal disruption to plant operations.

Learn more at: masteringled.com



Appleton™ Mercmaster™ Connect LED

APPLETON™

The Emerson logo is a trademark and a service mark of Emerson Electric Co. © 2021 Emerson Electric Co.

EMERSON

CONSIDER IT SOLVED™

Goodless Electric Co., Inc. Celebrates 80 Years with a Tribute to Employees

How a small family-owned company stands the test of time in the world of big box competition

Goodless Electric Co, Inc., a family-owned company with a distinguished reputation for providing dependable electrical contracting services and support, is marking its 80-year milestone by thanking employees for their hard work taking care of countless customers across western Massachusetts and northern Connecticut. The celebration kicked off on Thursday, September 12, with a company-wide party at Goodless Electric headquarters on Memorial Avenue in West Springfield.

“We are a family-run business, and we also think of our professional team as one big extended family,” said company President Jeff Goodless. “Our employees work so hard all year, sometimes around-the-clock, so we wanted to do something special to show our appreciation.”

Jeff’s father Leon Goodless and Leon’s brother Irving started the electric company behind their parents’ home in Springfield in 1945. The strong work philosophy the company was founded on endures today, with an emphasis on high standards and trustworthy performance delivered in a timely manner at competitive prices.

That history has enabled Goodless to retain some of the most experienced professionals in the industry.

“I worked for Jeff’s father Leon,” said Steve Cabana, a foreman currently overseeing a project on the UMass Amherst campus. “I’ve been with this company for 27 years. You’ve got to



really enjoy what you do to get up and go to work for the same company for that long,” he said. “They treat us well here.”

Goodless Electric’s reputation has landed the company some major projects including work at the Westover Air Reserve Base, Max’s Swing Lounge in the Basketball Hall of Fame, Springfield’s Court Square park project, and the JGS Lifecare nursing home in Longmeadow.

“Our organization has been a customer for decades,” said Marigza Rodriguez, who works with a Springfield-based non-profit organization for at-risk teenagers. She was among the customers who came to

the celebration because she said she also feels like part of the family. “Whenever we call at any time of day, we know we can count on Goodless,” she said.

The celebration included a vendor exhibition, employee gift bags, a taco truck, games, raffles and door prizes including restaurant gift cards and even tickets to a Patriots game.

“We strive for excellence not only in our work, but also in the way we treat our employees,” said Project Manager Greg Mastroianni.

“These electricians really go the extra mile,” said Administrative Vice President Judy Hannouche. “We just want them to know we appreciate everything they do.” □

ABOUT GOODLESS ELECTRIC CO., INC.

For 80 years, Goodless Electric has provided quality electrical services for major commercial and industrial businesses and discerning homeowners in the Greater Springfield area, Western Massachusetts and Northern Connecticut. The company emphasizes a dedication to delivering excellent customer service, offering free estimates and 24-hour emergency service. For more information, visit www.goodlesselectric.com.



THE SECRET TO UNDERGROUND POWER TRANSMISSION



OUR WUNPEECE TRANSMISSION SPACERS REDEFINE THE INDUSTRY STANDARD FOR UNDERGROUND POWER TRANSMISSION INSTALLATIONS. WITH PRECISION ENGINEERING AND UNMATCHED QUALITY,

JOIN THE RANKS OF INDUSTRY LEADERS WHO TRUST UNDERGROUND DEVICES FOR THEIR POWER TRANSMISSION NEEDS.



VISIT WWW.UDEVICES.COM

AND EXPERIENCE THE FUTURE OF UNDERGROUND POWER INSTALLATION

Hammond Power Solutions Completes Asset Purchase of Micron Industries Corporation



Hammond Power Solutions Inc. (“HPS”) (TSX: HPS.A), a leading manufacturer of dry-type transformers and power quality solutions, has completed the previously announced acquisition of assets relating to the operations of Micron Industries Corporation (“Micron Industries”) on October 7, 2024, a company based in the United States. The acquisition is structured as an asset purchase through HPS’ U.S. subsidiary. HPS will continue to operate the Micron Industries assets and continue to market the branded product offerings as previously sold by Micron Industries.

“We are excited to welcome Micron Industries into the HPS family. The combined expertise of our teams is a significant step forward in our growth strategy to offer an even broader array of innovative solutions to our customers and strengthen our reputation for high quality products and services, especially within our OEM markets,” said Adrian Thomas, CEO of HPS. “Industrial control transformers are essential for protecting sensitive equipment and align with our focus on power quality solutions. With rising demand for US-made products in energy efficiency and automation

projects, integrating Micron Industries into HPS is expected to enhance our ability to meet this growing market. Micron’s US-based manufacturing strengthens our service to customers across the US and North America, supporting our domestic growth and industrialization efforts.”
 “We are thrilled to join forces with HPS” said Norm Bates, CEO of Micron Industries. “Our shared vision and commitment to excellence make this combination an ideal fit. Together, we will be able to deliver unparalleled value to our customers and drive future growth.” □

ABOUT HAMMOND POWER SOLUTIONS INC.

Hammond Power Solutions Inc. (“HPS” or the “Company”) enables electrification through its broad range of dry-type transformers, power quality products and related magnetics. HPS’ standard and custom-designed products are essential and ubiquitous in electrical distribution networks through an extensive range of end-user applications. The Company has manufacturing plants in Canada, the United States (U.S.), Mexico and India and sells its products around the globe. HPS shares are listed on the Toronto Stock Exchange and trade under the symbol HPS.A.
Hammond Power Solutions – Energizing Our World



ABOUT MICRON INDUSTRIES CORPORATION

Micron Industries is the leading supplier of control transformers, serving OEMs and control system builders since 1971. Micron Industries also offers low voltage transformers and DC power supplies. With a state-of-the-art manufacturing facility, Micron provides unmatched quality and flexibility for custom orders. Micron Industries is committed to understanding the customer’s specific requirements, delivering defect-free products on time, and offering industry-leading support with the shortest lead times.

We’re Proud to be the Electricians’ Friend for Over 50 Years!

New Products

Safer Better Faster

IP19

4-Conduit Block

Vertical support from only one 1/4”, 3/8” or 1/2” threaded or threadless rods 1/4” or 3/8” threaded holes on the side along with slots for hex head bolts for hardware are provided for conduit support.



IP21a

QwikBlock

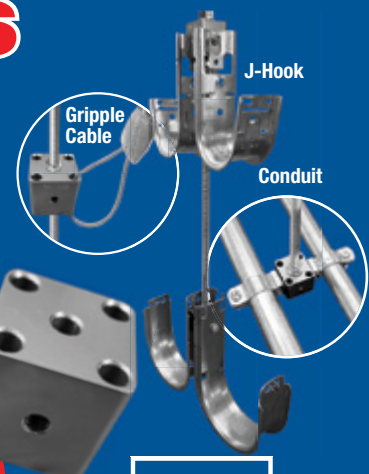
Vertical support from only one 1/4”, 3/8” or 1/2” threaded rod by attaching two machine screws 1/4” x 20 thru the existing holes in back of the box. Eliminates knocking out center KO on box and traditional nut and washer method to support a single box.



IP20a

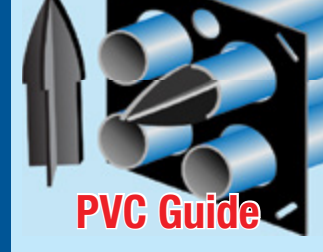
Box Support Rod Cubes

Vertical support from only one 1/4” or 3/8” threaded or threadless rod with 4 holes for Gripple applications as well as 4 threaded 1/4” or 3/8” holes for conduit support hardware.



IP3e

PVC Guide



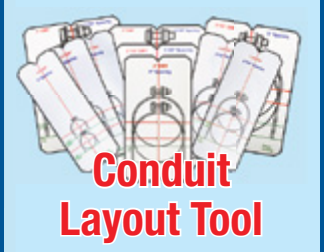
IP2b

PVC Driver



TE15

Conduit Layout Tool



IP3g

Long Slip PVC



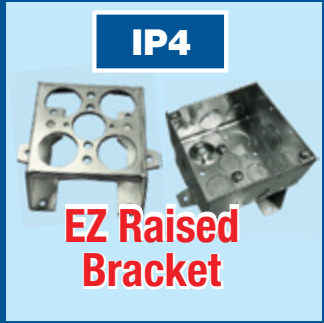
IP3f

Slip PVC/RGD



IP4

EZ Raised Bracket



For more information visit our website at SPProducts.com

Plus More Being Invented for SAFER BETTER FASTER Jobs . . . Call With Your Ideas!

Leviton Promotes Randy Mortensen in Strategic Move to Support Enhanced Business Strategy

Mortensen to spearhead global sales and marketing strategy, positioning Leviton for growth in key electrical and network solutions markets

Underscoring its commitment to strengthen key growth markets through an enhanced business strategy, Leviton recently announced the appointment of Randy Mortensen to Executive Vice President (EVP) of Global Distribution Sales and Marketing. In this elevated role, Mortensen will drive Leviton’s go-to-market strategy, ensuring the company’s innovative electrical and network solutions offerings effectively reach customers worldwide, capitalizing on the demand for electrification and technology convergence as well as the rapidly expanding data center sector.

Since joining Leviton in 2020, Mortensen has drawn on his over 25 years of industry experience to drive the globalization of Leviton’s sales and strategies. He expanded the strategic account and specification teams to a global scale, while also restructuring the European sales teams to capitalize on growth opportunities in targeted verticals and regions. Additionally, he implemented a specialized contractor organization to address the unique needs of this vital customer segment. These efforts have enabled local, personalized, and structured support to Leviton customers worldwide.

“Randy’s leadership will be critical



“Randy’s leadership will be critical as we continue to execute our enhanced business strategy, ensuring we are agile and responsive to both our customers’ needs and evolving market dynamics.”

—Daryoush Larizadeh, Leviton president and CEO



as we continue to execute our enhanced business strategy, ensuring we are agile and responsive to both our customers’

needs and evolving market dynamics,” said Daryoush Larizadeh, Leviton president and CEO. “His strategic vision and focus on emerging markets will be invaluable as we position the business to meet the significant growth opportunities and to build what’s next in the electrical and network infrastructure sectors.”

As EVP, Mortensen will focus on strengthening customer relationships, further solidifying Leviton’s reputation as a trusted solutions provider and ensuring customers across the globe enjoy consistent, standardized support from Leviton. He will also harmonize Leviton’s global brand positioning, ensuring its solutions and support are aligned with market needs and enhancing brand equity in key regions.

“This strategic appointment reinforces Leviton’s commitment to building the next generation of innovative and sustainable solutions, enabling our customers to thrive in a dynamic marketplace,” added Larizadeh. “In partnership with our newly appointed COO of Electrical, Bob Becker and COO of Network Solutions, Ross Goldman, Mortensen will play a key role in ensuring Leviton is set up to service its customers in the way they want and need.”

For more information about Leviton, please visit www.leviton.com. □

ABOUT LEVITON

Every day, Leviton builds what’s next to light, power, and connect everyday spaces to meet the needs of its residential, commercial, and industrial customers globally. From controls, to lighting, to electrical, to networking, Leviton’s relentless innovation for more than a century enables our customers’ lives to be easier, safer, more efficient, productive and sustainable. Driven by its commitment to its customers, the ingenuity of its employees, and the safety and quality of its products and solutions, with Leviton, the FUTURE IS ON. For more information, visit leviton.com, facebook.com/leviton, twitter.com/leviton, or youtube.com/levitonmfg.



iTOOLco.

THE MVP20K

MORE POWER, NO COMPROMISES.

865-670-3713 | www.iTOOLco.com



Milwaukee® Opens New Manufacturing Facility in Grenada, MS

Milwaukee Tool has, once again, expanded their presence in the United States with the opening of their newest manufacturing facility located in Grenada County, Mississippi. The new location will employ more than 800 people, marks Milwaukee's eighth location in Mississippi, and is the company's largest manufacturing facility in the United States to date.

"Our rapid growth continues to accelerate, and this new facility in Grenada plays a crucial role in maintaining our trajectory of excellence in serving our distributor and user partners," said Scott Griswold, Group President of the Professional Accessories Business Unit at Milwaukee Tool. "This success is the direct result of recruiting some of the best talent around the nation, especially in the state of Mississippi. Our strong people and our unique culture are unlike anything else in the industry."

Milwaukee Tool invested more



than \$60 million into the more than 500,000-square-foot facility. Equipped with state-of-the-art technology and manufacturing capabilities, the Grenada location will initially produce Milwaukee's robust line of accessories, including their legendary SAWZALL® Blades, and will expand into additional product lines over time.

Milwaukee Tool, celebrating its 100th anniversary this year, has seen remarkable double-digit growth every year for more than a decade. With a workforce of over 10,000 in the U.S. alone, the company has expanded its footprint both domestically and globally, driven by this consistent growth. In Mississippi, Milwaukee Tool has invested more than \$250 million over the last five years and employs more than 4,000 people.

More About Milwaukee's Growth & U.S. Investments

Milwaukee Tool is a global company with manufacturing, distribution, and operations presences across North America, South America, Europe, Asia, and Australia. The company has designed, engineered, and manufactured products in the United States for 100 years.

Over the last 5 years, Milwaukee® has invested \$675 million in domestic expansion projects. In addition to this new Grenada location, the company's other domestic presences include Greenwood, Olive Branch, and Jackson, MS, as well as in Brookfield, Menomonee Falls, Milwaukee, West Bend, Mukwonago, and Sun Prairie, WI, Cookeville, TN, Chicago, IL, and Greenwood, IN. □



ABOUT MILWAUKEE TOOL

Milwaukee Tool, founded in 1924, is a global leader in delivering innovative solutions to the professional construction trades that increase productivity and safety. Milwaukee® is known for its world-leading M12™, M18™, and MX FUEL™ cordless systems, the ground-breaking performance of their cordless innovations, safety solutions, battery-powered outdoor power equipment, jobsite lighting and clean-up, time-saving tool accessories, and innovative hand tool and PACKOUT™ Modular Storage products. The company is dedicated to delivering a steady stream of advanced, trade-specific solutions. Milwaukee Tool is a Brookfield, Wisconsin-based subsidiary of Techtronic Industries Co. Ltd. (TTI) (HKEx stock code: 669, ADR symbol: TTNDY). For more information on the full line of Milwaukee® products, please call 1-800-SAWDUST or visit www.milwaukeetool.com.



RANDL
INDUSTRIES, INC.

Install Peace of Mind!

First there was 4 square...
and now the **REVOLUTIONARY 5 Square® Box!!**

You've struggled with 4 Square boxes for years - you know how small, cramped and time consuming they are. Finally, there is a solution that allows you the space you have always needed.

The **5 Square®** Boxes (5" x 5" x 2-7/8") provide up to 88 in³ of interior volume which more than doubles that of most existing boxes on the market.

Create a robust and unrivaled infrastructure for the life of your facility with the **5 Square®** Products!

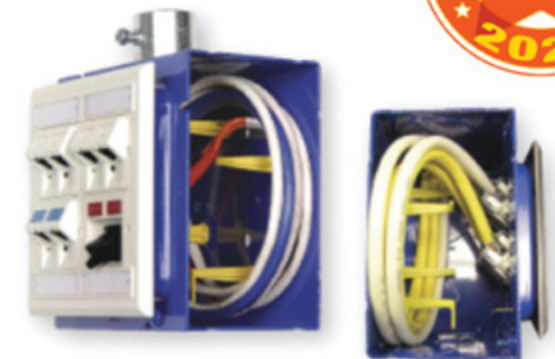


Fire Signal



- TWICE THE VOLUME AS MOST BOXES
- SAVE LABOR...INCREASE PROFITS
- ELIMINATES TROUBLESHOOTING TIME AND COST
- FULLY UPGRADEABLE SYSTEM
- SPECIFIED BY ENGINEERING FIRMS, HOSPITALS, UNIVERSITIES & GOVERNMENT AGENCIES
- AVAILABLE IN ZINC OR RED

Telecommunications



- INTEGRAL CABLE MANAGEMENT
- SAVE LABOR...INCREASE PROFITS
- FACILITATES MIN. BEND RADIUS REQUIREMENTS
- SUPPORTS CURRENT AND EVOLVING SYSTEMS
- SUPPORTS PoE PLUS
- SPECIFIED BY ENGINEERING FIRMS, HOSPITALS, UNIVERSITIES & GOVERNMENT AGENCIES

RANDL
INDUSTRIES, INC.

P: 509.340.0050 • F: 509.340.0051

See our line of telecom & fire signal boxes at: www.RANDL-INC.com

Making Communications & Fire Protection More Reliable & Cost-Effective!

Hy-Brid Lifts Announces Director of Sales for Western United States

Hy-Brid Lifts, an industry leader in aerial lift equipment, announces Charlie Haskin as Director of Sales covering the western United States. Haskin's responsibilities include providing customer support as well as continuing the growth and channel development of the Hy-Brid Lifts line of low-level scissor lifts.

"I'm excited to join this team and to be part of the growth for the Western Region by building upon my existing customers and boosting new relationships," Haskin said. "After visiting our manufacturing facility in Wisconsin, I'm confident in the quality of our equipment and solid support of our service and leadership teams. With over 20 years' experience split in equipment manufacturing sales and general rental, I understand the importance of quality and support for our customers. Along with the new product launching in 2025, I have no doubt in our success for the future."

Haskin brings 20 years of industry knowledge and experience to his new role, largely derived from his time in equipment sales, dealerships and the equipment rental industry. During his time in these sectors, he had a strong



emphasis on customer relationships.

"We're thrilled to welcome Charlie to the Hy-Brid Lifts team as he takes on the western United States region. His extensive knowledge in sales and the rental industry will enhance our

ability to serve our customers," said Eric

Liner, CEO of Custom Equipment LLC. "Charlie Haskins is a great addition, and we're excited about the valuable contributions he will make toward our company's continued growth." □

ABOUT HY-BRID LIFTS

When Custom Equipment, LLC started in 1981, we focused our small welding and fabrication business on exceeding customer expectations. Now, after 40 years, we're even more committed to providing innovative solutions to the problems faced by the access industry. Each Hy-Brid Lift is a testament of our dedication to customer satisfaction and operator safety. Our aerial equipment is continually being modified based on real customer feedback to maximize uptime and productivity on jobsites across the world. We're also proud that all Hy-Brid Lifts are fully manufactured and assembled in the United States, enabling us to support local communities and deliver high-quality products that will last for years to come. For more information: Hy-Brid Lifts, 2647 Highway 175, Richfield, Wis. 53076; 262-644-1300; fax 262-644-1320; sales@hybridlifts.com; www.hybridlifts.com; or Facebook; Twitter; LinkedIn; Instagram and YouTube.

HY-BRID LIFTS
BY CUSTOM EQUIPMENT LLC



Milwaukee® Delivers Fastest Drilling With Next Generation SDS Plus Rotary Hammer

Milwaukee Tool continues to deliver new and improved technology in their lineup of M12 FUEL™ solutions with a next generation M12 FUEL™ 5/8" SDS Plus Rotary Hammer, providing best in class features. The M12 FUEL™ 5/8" SDS Plus Rotary Hammer is Milwaukee's latest solution driving disruptive innovation designed to be the highest performing compact rotary hammer for MEP, Facility Maintenance, and remodeling professionals.

Designed with a lightweight, one-handed use design, and delivering up to (73) 1/4" X 2" holes per charge, Milwaukee's new rotary hammer drives productivity and ease of use for professionals on the job. Identifying the need for small anchor drilling with highest impact energy and drill rate, Milwaukee's newest Rotary Hammer delivers on professionals needs in the compact SDS Plus space. The POWERSTATE™ Brushless Motor delivers .89 ft-lbs of impact energy, 1,200 RPM, and 4,400 BPM, enhancing portable productivity. Additionally with this solution, users were provided 37% faster drill speed than leading competitors.

Optimized for tight spaces and all-day use, this compact rotary hammer improves processes and reduces fatigue delivering all-day productivity for service users. Delivering on the needs of various trade professionals, this new solution is designed with premium technology that makes it the fastest drilling in the 12V class.

Experience ultimate productivity with the M12 FUEL™ 5/8" SDS Plus Rotary Hammer, designed to keep professionals working longer with unmatched run-time and performance. REDLINK PLUS™ Intelligence ensures maximum performance and protects the rotary hammer from overload, overheating, and over-discharge. This tool is also equipped with shadowless lighting for increased visibility, an AVS Anti-Vibration System, and an integrated hang hook for functional storage and convenience, allowing this hammer to take portable productivity to the next level. For maximum versatility, this hammer features a 3-mode operation – hammer drill, drill-only, and chisel for light material removal.

For more information, visit www.milwaukeetoll.com

MaxLite Introduces EasyRF: Simple Room-Based Wireless Lighting Controls

MaxLite, a leader in energy-efficient lighting solutions, is proud to announce the launch of EasyRF™, an innovative room-based wireless lighting control system that expands the company's c-Max Lighting Controls platform.

EasyRF represents a user-friendly and cost-effective solution designed to seamlessly integrate luminaire level lighting controls (LLLC) for both new construction and retrofit projects. This innovative system is designed to create groupable wireless lighting control and is an ideal fit for contractors and installers working on small to medium-sized projects.

"EasyRF is the result of our continued commitment to innovation and simplifying wireless lighting control adoption," said Umesh Baheti, SVP of New Technologies at MaxLite. "We created a system that's not only powerful but also intuitive to install and operate, without the need for extensive training."

Ayemen Chami, Director of Engineering at MaxLite, added, "What sets EasyRF apart is its ability to deliver high-performance control capabilities without the complexity typically associated with advanced lighting systems. We focused on creating a solution that simplifies the commissioning process with just using a handheld remote without needing an app or a gateway."

"EasyRF represents our vision of making lighting controls accessible to all," added Baheti. "We're excited to empower contractors and facility managers with a straightforward solution of wireless grouping and control, offering them a perfect balance of simplicity and powerful functionality."

This new system works with MaxLite's extensive range of controls-ready luminaires and complements the company's existing c-Max Lighting Controls platform offering customers a comprehensive range of control options to suit various project requirements.

cMax RF
EasyRF™ LIGHTING CONTROLS



For more information, visit www.maxlite.com/cmax-easyrf



Galvanized Rigid Transition Couplings to Schedule 40/80 PVC Stub-Up



Save at Least **1 Hour** per Installation.

When Concrete is Poured and Metal Below the Slab is Needed

Transitions in Less Than 5 Minutes!

Save Cost on the Rigid Nipple, Tape & Labor

Use for Entire Job - Not Just for Repair

See Our Conduit Plug See page IP27c



See Our REAMING BITS for Transition Couplings



See page IP15

PATENT PENDING



Saves a great deal of time transitioning from PVC conduit to Rigid Conduit above slab without damaging PVC risers and chipping concrete eliminating a concrete repair job!

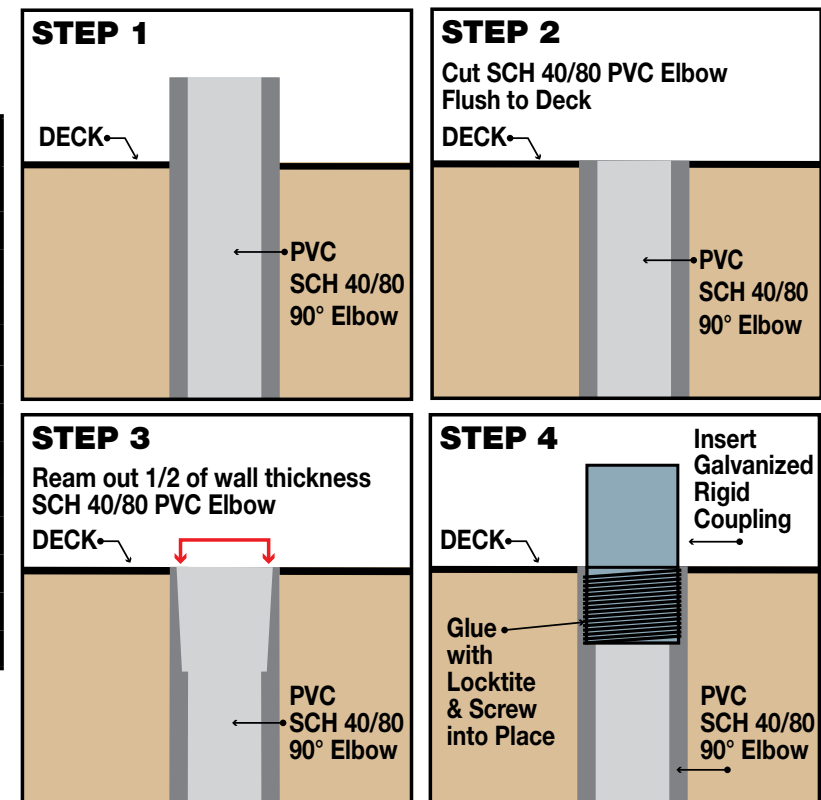
1/2" thru 6"

Transition Couplings

Size	Catalog #
1/2"	50-PVC-R-GRC
3/4"	75-PVC-R-GRC
1"	100-PVC-R-GRC
1-1/4"	125-PVC-R-GRC
1-1/2"	150-PVC-R-GRC
2"	200-PVC-R-GRC
2-1/2"	250-PVC-R-GRC
3"	300-PVC-R-GRC
3-1/2"	350-PVC-R-GRC
4"	400-PVC-R-GRC
5"	500-PVC-R-GRC
6"	600-PVC-R-GRC

All Above Meet UL651 CSA C22.2, No.85 and US Army Corps Engineers Specifications

All SP Products Inc. Transition Fittings are manufactured for installation to either meet or exceed in accordance with NEMA TC2, TC3 or UL 651 specifications



Customer must satisfy all codes and owners' specifications.

2024 NECA **Show Stopper** WINNER



PATENT PENDING
 PATENTED



LABELS APPLY TO PRODUCTS ONLY WHERE SHOWN ABOVE

ABB launches ReliaHome™ Load Centers signaling rebrand & resurgence of residential energy distribution portfolio

- ReliaHome™ offers a new, comprehensive, innovative residential portfolio under the ABB brand following the 2018 acquisition of GE's Industrial Solutions business
- Optimized solution delivers complete residential energy distribution, demonstrating ABB's commitment to electrify the future of housing
- ReliaHome load centers offer a plug-on neutral design and common circuit breaker platform to simplify stocking for electrical distributors and to decrease installation time for electrical contractors with wide availability across the Americas

Continuing its investment in redesigning, enhancing, and expanding its residential portfolio to bring smart, sustainable technologies to homes, today ABB launches ReliaHome Load Centers¹. The announcement signals ABB re-launching and re-branding its residential energy distribution offering under the ABB ReliaHome brand², following its acquisition of GE's Industrial Solutions business in 2018.

ABB's universally compatible residential circuit breakers work seamlessly with the entire ReliaHome Load Center portfolio providing a complete solution that contractors can install easily, and distributors can stock with confidence. Available through ABB's extensive distributor network across the U.S., Canada, Mexico, Ecuador, Central America and the Caribbean, ReliaHome Load Centers incorporate several advancements.



For more information, visit <https://new.abb.com>

Arrow Hart EZ Link™ GFCI Receptacles

Eaton's Wiring Devices Expand its EZ Link Modular Devices Product Family to Include GFCI Receptacles

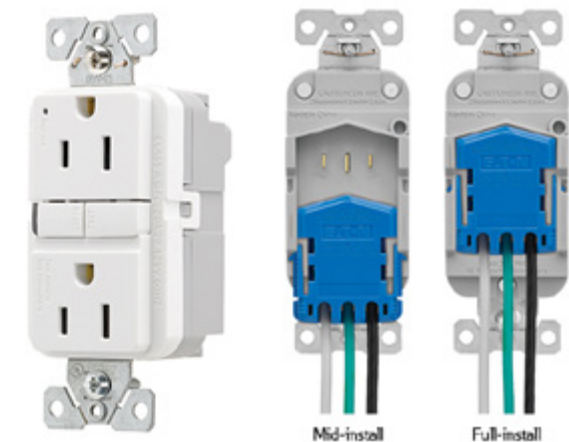
Eaton has expanded its EZ Link™ product offering to now include GFCI receptacles. EZ Link Modular Devices are designed to provide the most efficient way to wire receptacles and switches for large commercial projects, saving installers time and building owners money.

GFCI receptacles can make up to 25% of a wiring device installation in commercial applications. The EZ Link devices enable installers to wire a connector during rough-in and easily and quickly install the device at trim-out, saving time and skilled labor hours. This solution is ideal for high-rise office buildings, hotels, educational facilities, and other large projects.

EZ Link Modular Devices offer a unique sliding, arrow-shaped design that allows the connector to slide and lock into place on the back of the device. Guide rails are molded into the back of each device, ensuring accurate alignment. Release wings provide an easy, one-handed release of the device, while offering two points of capture to stay securely attached to the device.

Additional EZ Link GFCI receptacle features include:

- A low profile, allowing for more room for installers to make their electrical connections
- Wide TEST/RESET buttons, making it easier to test and reset
- A reset indicator light, notifying users of a trip incident
- An end-of-life indicator light flashes red to notify that the unit needs to be replaced
- Minimal top housing markings, debossed and neutrally positioned, for easy reading



EZ Link Modular Devices offer a unique sliding, arrow-shaped design that allows the connector to slide and lock into place on the back of the device. Guide rails are molded into the back of each device, ensuring accurate alignment. Release wings provide an easy, one-handed release of the device, while offering two points of capture to stay securely attached to the device.

For more information, visit www.Eaton.com/EZLink

Cost-Effective



Professional



AEON LED NexGen Sports & Flood Lighting

95%+ Total Efficiency. Up to 170+ Delivered LpW.

AEON LED Sports and Flood Lights are the most Efficient High-Powered Luminaires with an Incredibly High (95%+) Total Efficiency. Up to 170+ Delivered LpW. Means Better Light, with Fewer Luminaires. With 3 different series to choose from makes finding a lighting solution for your application easy! The Advanced Technology within the AEON Drivers are Specifically Engineered and Designed for all AEON Luminaires. AEON LED Luminaires have an Incredibly Long-Life Span of over 100,000 hours.

PRO Series:

The AEON PRO Series has 3 Lumen Packages to suit a variety of Professional Indoor and Outdoor Applications: 520W with 97,500 Delivered Lumens, 750W with 126,500 Delivered Lumens, and 1,200W with 185,700 Delivered Lumens.

PNR Series:

The AEON PNR Series has 2 popular lumen packages to suit a variety of Indoor and Outdoor applications: 500W with 91,300 delivered lumens and 750W with 113,880 delivered lumens.

ECO Series:

The AEON ECO Series has 3 Lumen Packages to suit a variety of Indoor and Outdoor Applications: 230W with 39,100 Delivered Lumens, 310W with 51,150 Delivered Lumens, and 500W with 80,000 Delivered Lumens.

AEON LED Luminaires are Designed, Engineered & Assembled in the USA. They offer the most Powerful, Rugged & Efficient Lighting options in the Industry. You can build a State-of-the-Art Lighting System from the Ground-Up or bring your Current Lighting System into the future. All AEON LED Luminaires have a high Color Rendition Index showing True Colors: CRI >85+. AEON's Patented Design has a Glare-Free Illumination of UGR <19 and eliminates visual discomfort of traditional lighting. AEON LED Luminaires are Neighborhood-Friendly with Zero Spillage or Sky Glow. Find the right Lighting Solution for you and your facility.

For more information, visit www.AEONLEDLighting.com

Gray Tools Announces Full Line of Insulated Hand Tools



Gray Tools has released a full line of insulated hand tools to meet the growing needs of commercial and residential electricians, industrial maintenance professionals, mobile/field service technicians, and electric vehicle (EV) mechanics. The assortment consists of more than 275 products, including both sets and loose tools, with new tools continuing to be added as Gray expands the line. Each tool goes through a lengthy, labor-intensive process to ensure maximum protection for the operator up to 1,000 VAC.

Gray's insulated line includes ratchets, sockets, wrenches, screwdrivers, nut drivers, pliers, hex keys and hacksaws, as well as a selection of uncommon tools. Various styles and sizes, including SAE and metric, are available to meet a range of jobsite requirements. Each tool features a dual-colored insulation that serves as a visual safety indicator. If the outer orange layer of insulation becomes damaged, an inner yellow layer alerts the user that the tool is no longer safe for use.

Gray's rigorous multi-step insulation process is designed to meet or exceed ASTM F1505 standards for insulating adhesion, dielectric properties, flammability and durability. When the process is completed, each tool is charged with 10,000 volts of energy for 180 seconds to ensure its insulation resists potential electric shock. Other tests are performed to verify the flame resistance and durability of the insulating material.

"The increasing development of electric-powered vehicles and systems is driving the demand for insulated tools, and we're here to supply that need with industrial-quality products that maximize worker productivity and safety," said Dragos Baicoianu, Marketing Manager, Brand and Digital. "Our insulation process is second to none, and we have the ability to insulate almost any tool from our product catalog. Customers can count on these tools to have the same outstanding quality they've come to expect from Gray products since 1912."

Gray's full line of insulated tools is manufactured in North America and backed by a limited lifetime warranty.

For more information, visit www.graytools.com

EasyHeat Snow Melt System Prevents Dangerous Ice Dams and Icicle Formations on Roofs

Although winter weather evokes images of warm fires, icy wonderlands, and snowball fights, it can also be extremely destructive to roofs. Ice accumulation on the edge of roofs, also known as ice dams, can create a blizzard of problems for property owners, from minor inconveniences to severe structural damages. If left untreated, water from melting ice migrates and accumulates, which can cause leaks, mold growth, structural damage, and in extreme cases, total roof collapse. The melted water then refreezes as temperatures drop, restarting the cycle once again.

EasyHeat, a brand of Emerson, is helping building owners avoid costly problems with its RG Trace Cable De-Icing System. Simple and inexpensive, the RG Trace Cable De-Icing System includes everything necessary for a complete, hassle-free installation:

- Cut-to-length RG Trace heating cables, delivering 12 watts per foot output needed to accommodate larger commercial gutters and downspouts;
- EasyHeat Controls to sense both moisture and temperature, optimizing power consumption;
- Downspout hangers, power connection kits and end-seals necessary to safely complete the system.

Being self-regulating, EasyHeat RG Trace Cables automatically varies its heat output as temperature changes. The cable's outer jacket is both waterproof and UV resistant to withstand harsh weather conditions for years, while a tinned copper braid installed over two protective inner jackets provide a continuous ground path.

EasyHeat RG Trace Cable De-Icing System is available on reels up to 1,000 feet for cut-to length convenience in the field. It is suitable for use on asphalt or wood shingles, metal roofing, synthetic rubber, thermoplastic, modified bitumen ("membrane"), and virtually every other type of roofing material.



For more information, visit www.easyheat.com

Introducing Sadie

Sadie is Alva's newest addition to our outdoor sconce collection. It is a clean modern form, narrow and generates ambient light.

4.6" Wide

We've seen a trend in recent years toward narrow luminaires. Tessie Slotted, for example, took off overnight. Specifiers often mount outdoor sconces on columns where a typical outdoor sconce won't work as they're too wide.

When designing Sadie we realized narrow is a popular trend. We decided to go ultra narrow here, providing a sleek profile ideal for a myriad of applications.

3" Depth

We've chosen to exceed ADA requirements. Our customers want fixtures that hug the wall. We get it. Often specifiers want recessed slots outdoors. The cost to install is high. Installation has its challenges. Here we offer a cost-effective means of achieving this look.

Ambient Light

We've also seen a trend toward fixtures which generate ambient light. Ambient light helps us feel safe, creates a sense of comfort. We've also seen an increase in the number of outdoor sconces used on buildings in North America. More light = safety, security.

Clean Design

We've also seen a trend towards simple clean design. The phrase 'less is more' applies to outdoor fixture design. The fact is our simplest designs represent our bestsellers.

Architects never want a light fixture interfering with the building's exterior. The fixture needs to complement the building's aesthetics.

Built to Last

Tough construction, built to last. We use impact resistant exterior grade white acrylic and the best marine grade aluminum available. Our products are built to last.



For more information, visit www.alvalight.com

DON'T MISS OUT!





TOP PRODUCTS & SOLUTIONS
2024

Does your product help to increase profits or improve safety and overall working conditions for the electrical contractor? If so, don't forget to submit your product for nomination as one of *Electrical Products & Solutions'* **"TOP PRODUCTS OF 2024"**. All the winners will be featured in our December issue.

Deadline: December 6, 2024

Requirements:
Submit a high resolution photo (300 dpi) of your product, along with a brief description (up to 150 words). Please note on your submission that it is for consideration for Top Products.

E-mail: danny@epsmag.net
or mail to: Electrical Products & Solutions
2009 Eagle Ridge Drive, Birmingham, AL 35242

Rozino Nano-Linear Wall Grazing Luminaire

One of the most powerful wall grazers in its class, the Rozino Nano-Linear Wall Grazing Luminaire features a peak candela of 4700+ and a precise 10-degree beam angle designed to highlight textures and architectural details.

Rozino features pivoting and lockable mounting hardware for precise aiming and a patent-pending, paintable fixture cover hides hardware and wire feeds while bridging up to 150 feet of individual fixtures to create a continuous monolithic fixture appearance.

Painting the pre-primed fixture cover to color-match the ceiling will allow the fixture to blend in with its surroundings. Perfect for commercial and sophisticated residential settings, Rozino combines aesthetic flexibility with cutting-edge technology to enhance any space.



For more information, visit <https://optique-lighting.com/rozino/>

ADVERTISER INDEX


This advertiser index is compiled as a courtesy to our readers. While every effort is made to provide a complete and accurate listing of companies and page numbers, the publisher is not responsible for errors. **Click the company name or page number to see their advertisement.**

Company	PG#	Company	PG#
APPLETON / EMERSON	13	RANDL INDUSTRIES	23
APPLETON / EMERSON	15	SP PRODUCTS INC	3
CONDUIT REPAIR SYSTEMS	4	SP PRODUCTS INC	19
iTOOLco	IFC	SP PRODUCTS INC	26, 27
iTOOLco	IBC	SP PRODUCTS INC	BC
iTOOLco	21	TIMCO INSTRUMENTS, LLC	5
KRENZ & COMPANY	32	UNDERGROUND DEVICES	1
MILLER SAFETY CONSULTANTS, LTD	7	UNDERGROUND DEVICES	17
MILLER SAFETY CONSULTANTS, LTD	11		

When it comes to transformer cooling fans, Krenz-Vent is the industry recognized gold standard. Our leadership position is earned through 80+ years of R&D plus our superior engineering and customer service. You can rest easy when you specify Krenz fans.

ENGINEERED TO COOL

There is no comparison.



KRENZ & COMPANY, INC.

KRENZVENT.COM • 262.255.2310 • KRENZ@KRENZVENT.COM

ALL THE INFORMATION YOU NEED IS JUST A CLICK AWAY AT WWW.EPSMAG.NET

Electrical Products & Solutions

Transition Couplings
PVC Bell End Adapter
Galvanized Rigid Conduit - 1/2" thru 6"

Warming Up to Electrical Heating Cables

WHAT'S NEW

- Conduit Repair Systems, Inc. The World Leader in Split Conduit Products
- DMF Lighting Expands its M Series Commercial Collection with High Lumen Packages for Hospitality and Mix-Use Spaces
- New Multi-Tester from Klein Tools Combines Core Electrical Products into One Model
- RPS Launches SlimWave Filter To Safeguard Motor and Cables

CORDLESS CANNON 6K

iTOOLco.

WWW.iTOOLco.com | 865.670.3713

f i t y in



Speed, versatility, and performance are all yours with iTOOLco's Cordless Cannon 6K™. This portable 6,000 lb. puller is intuitively designed to handle all of your day-to-day wire pulls.

The built-in capstan switch automatically turns the puller on and off. Simply tug on the rope to start the pull and slack off the rope to shut it down. Delivers dynamic performance in remote locations or areas where power is not yet available.





SPPRODUCTS, INC.

Productivity and value thru ideas
FOR SAFER BETTER FASTER JOBS



We're Proud to be the Electricians' Friend for Over 50 Years!

IP5

"The Original"

Enter Any KO on Both Sides of the Box



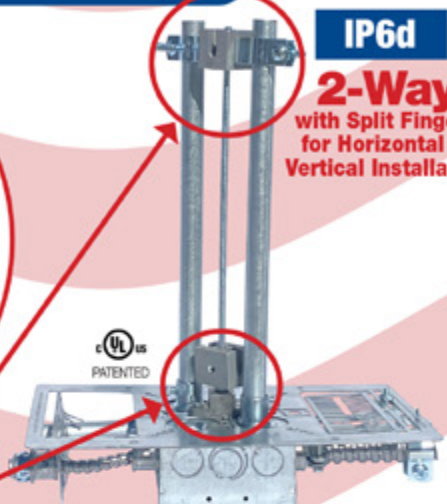
IP19/20
4-Conduit Block
PATENTED

IP21a
QwikBlock
PATENT PENDING

Use 4-Conduit Block (IP19 or IP20) with QwikBlock (IP21a)

IP6d

2-Way
with Split Fingers for Horizontal or Vertical Installation

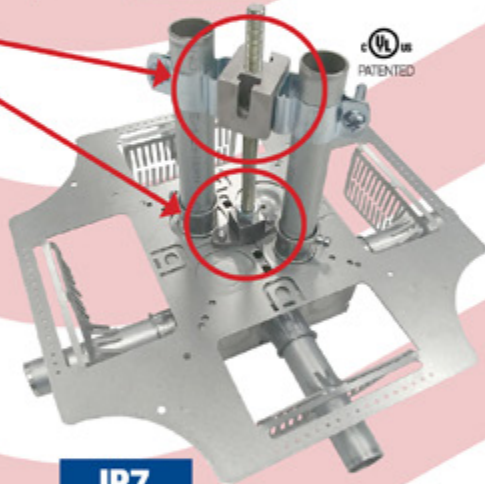


IP6

4-Way

Enter Any KO on All 4 Sides of the Box Plus 4 Large Open KOs in Center Allows Entering Back of Box

Our Family of Conduit & Box Support Plates Saves Valuable Time & Money!



IP7

4-Way

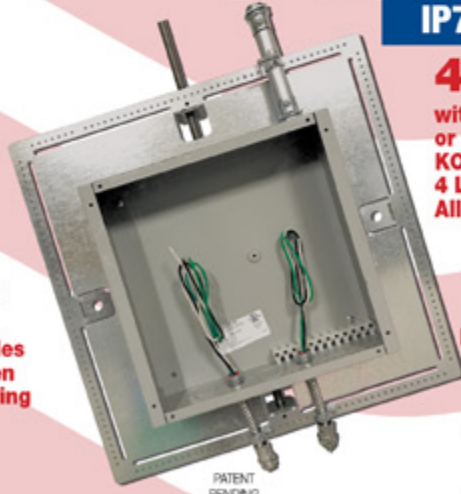
with Split Fingers for Horizontal or Vertical Installation. Enter Any KO on All 4 Sides of the Box Plus 4 Large Open KOs in Center Allows Entering Back of Box.



IP6a

2-Way/Half

Enter Any KO on 1 or 2 Sides of the Box Plus Large Open KOs in Center Allows Entering Back of Box



PATENT PENDING

IP8

Mount Horizontally or Vertically from One Single Support

20 x 20

Supports up to 12 x 12 J-Box

28 x 28

Supports up to 20 x 20 J-Box

MADE IN THE USA!

Plus More Being Invented for *SAFER BETTER FASTER* Jobs . . . Call With Your Ideas!

SPProducts.com 800-233-8595 info@SPProducts.com