

MARCH 2025

# Electrical Products & Solutions™

The Purchasing Guide for Electrical Contractors

[www.epsmag.net](http://www.epsmag.net)



**The Future of  
Cable Management:**  
*Underground Devices'  
Heavy Duty Nonmetallic  
Cable Rack*



# CANNON 12K

**THE TOUGHEST WIRE PULLER YOU'LL EVER USE!**

**EXTRA EXTENSIONS:**  
giving you up to 13' of wire from the conduit opening.

**SIX SPEEDS:**  
Dual capstans with 3 speeds on each AND reverse gear!



12,000 Lb. pulling capacity.



Dual capstans with a 3 speed motor.



Overhead, underground and side pull capabilities.

*We're Proud to be the Electricians' Friend for Over 50 Years!*

**NEW PRODUCT!**

**IP10a**

**EZ STUB-UP**

Join two EZ Stub-Ups with strut to support and secure multiple stub-ups on wooden forms before concrete pour for sizes 1/2", 3/4", 1" & 1-1/4" stub-ups with SP's Nylon Support Brackets and transition to RGB with our transition couplings.

**IP1**

## Qwik Duct Safer Better Faster

**IP3b  
IP3c**

**HDPE CUSTOM TEMPLATES**  
In Any Configuration Required

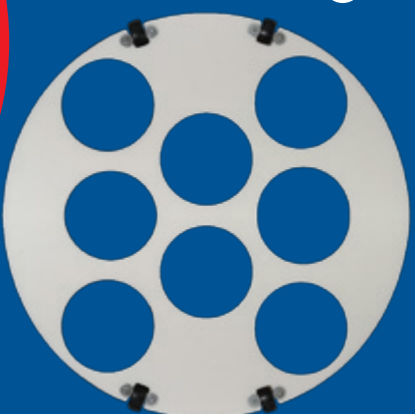
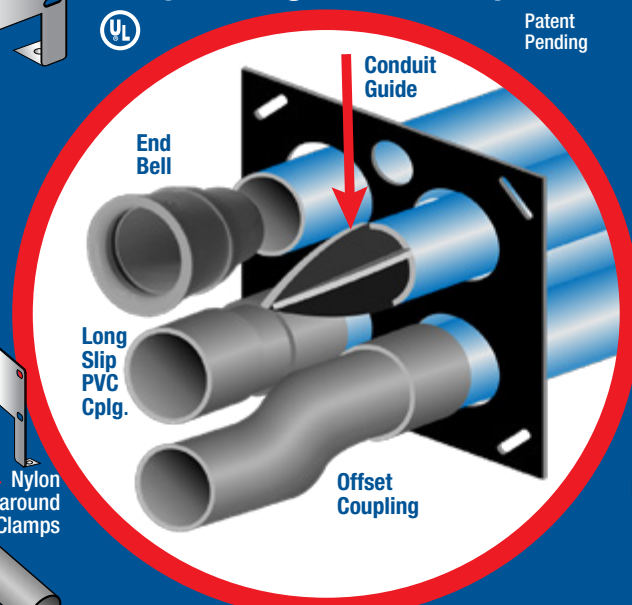
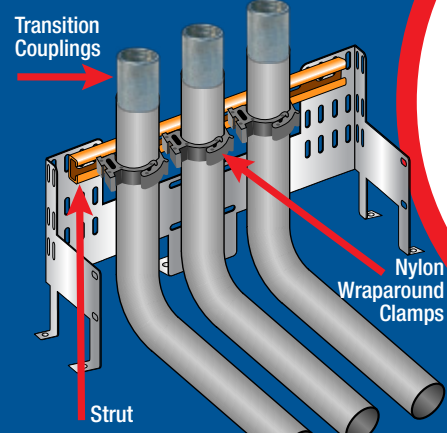
**PVC Offset**

Sizes 1/2" thru 6"  
Meets Flexible Madrel Test Requirements

**Bore Spacers**

Sizes 1/2" thru 6"  
Roll assembled conduit into caissons and under obstructions

**IP2a**



**IP13a-p**

## Conduit Transition Couplings



**Save Cost on the Rigid Nipple, Tape & Labor**  
*Use for Entire Job - Not Just for Repair*

*Plus More Being Invented for SAFER BETTER FASTER Jobs . . . Call With Your Ideas!*



Electrical Products & Solutions™  
issue sponsors



COMPANY PROFILE

**6 Protect Yourself**  
Miller Safety Consultants —  
*A Leader in Arc Flash Protection*  
BY VINCENT MILLER

COVER STORY

**8 The Future of Cable Management:**  
*Underground Devices' Heavy Duty  
Nonmetallic Cable Rack*  
BY ABE FINKELSTEIN

FEATURE ARTICLE

**16 Sensor Technology for  
Quality of Life in Cities**

DEPARTMENTS

- 22** INDUSTRY NEWS
- 25** NEW PRODUCTS
- 32** AD INDEX

ON THE COVER

Photo courtesy of Underground Devices



Electrical  
Products & Solutions™  
The Purchasing Guide for Electrical Contractors www.epsmag.net

PUBLISHER  
Danny J. Salchert

OFFICE MANAGER  
Anita Salchert

CREATIVE DIRECTOR  
Derek Gaylard

CIRCULATION DIRECTOR  
Pam Fulmer

CONTRIBUTING WRITERS  
Vincent Miller  
Abe Finkelstein



PRESIDENT  
Danny J. Salchert

EXECUTIVE AND  
ADVERTISING OFFICES  
2009 Eagle Ridge Drive  
Birmingham, AL 35242  
**phone:** 205.981.4541  
[www.epsmag.net](http://www.epsmag.net)  
[danny@epsmag.net](mailto:danny@epsmag.net)

*Electrical Products & Solutions™* is published twelve times a year on a monthly basis by ABD Communications, Inc., 3591 Cahaba Beach Road, Birmingham, Alabama, 35242, USA. *Electrical Products & Solutions™* is distributed free to qualified subscribers. Non-qualified subscription rates are \$57.00 per year in the U.S. and Canada and \$84.00 per year for foreign subscribers (surface mail). U.S. Postage paid at Birmingham, Alabama and additional mailing offices. *Electrical Products & Solutions™* is distributed to qualified readers in the electrical contracting industry. Publisher is not liable for all content (including editorial and illustrations provided by advertisers) of advertisements published and does not accept responsibility for any claims made against the publisher. It is the advertiser's or agency's responsibility to obtain appropriate releases on any item or individuals pictured in an advertisement. Reproduction of this magazine in whole or in part is prohibited without prior written permission from the publisher.

FOLLOW US ON



lightfair®  
presented by light+building

May 4 - 8, 2025  
Las Vegas, Nevada

Power Up Your  
Lighting Expertise

As a professional in electrical products, LightFair 2025 is the must-attend event for discovering the latest lighting solutions. Explore IoT-enabled fixtures, energy-efficient systems, and advanced components designed to enhance performance.

▶ **CLICK TO LEARN MORE!**



INTERNATIONAL ASSOCIATION  
OF LIGHTING DESIGNERS **IALD**

messe frankfurt



# REPAIR CONDUIT IN A SNAP!

No Tape • No Plastic Straps • No Metallic Straps

## NO KIDDING!

*Designed especially for power, communications and fiber optics.*



**STEP 1**  
Remove damaged conduit



**STEP 2**  
Cut split duct conduit to fit



**STEP 3**  
Snap in place

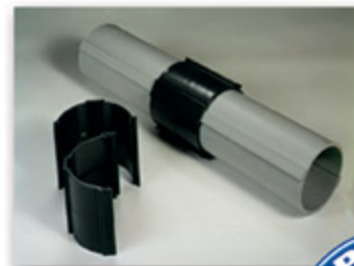
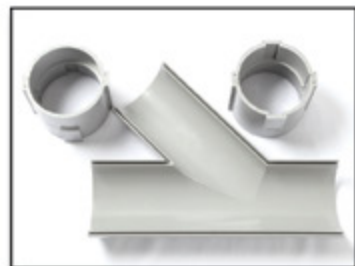
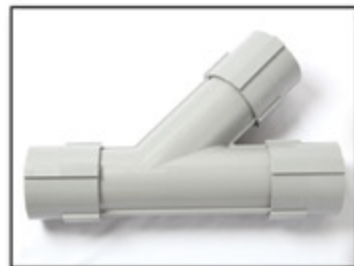
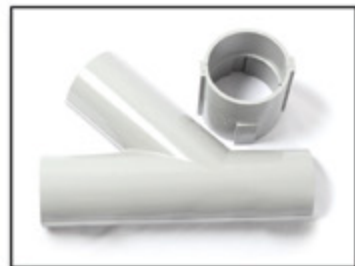


**STEP 4**  
Attach adapters



**STEP 5**  
Finish job in record time

***"The World Leader In Split Conduit Products"***



**Conduit Repair Systems, Inc.**  
The World Leader In Split Conduit Products

800.670.1804 • 435.673.8724 fax • crs@conduitrepair.com • www.conduitrepair.com

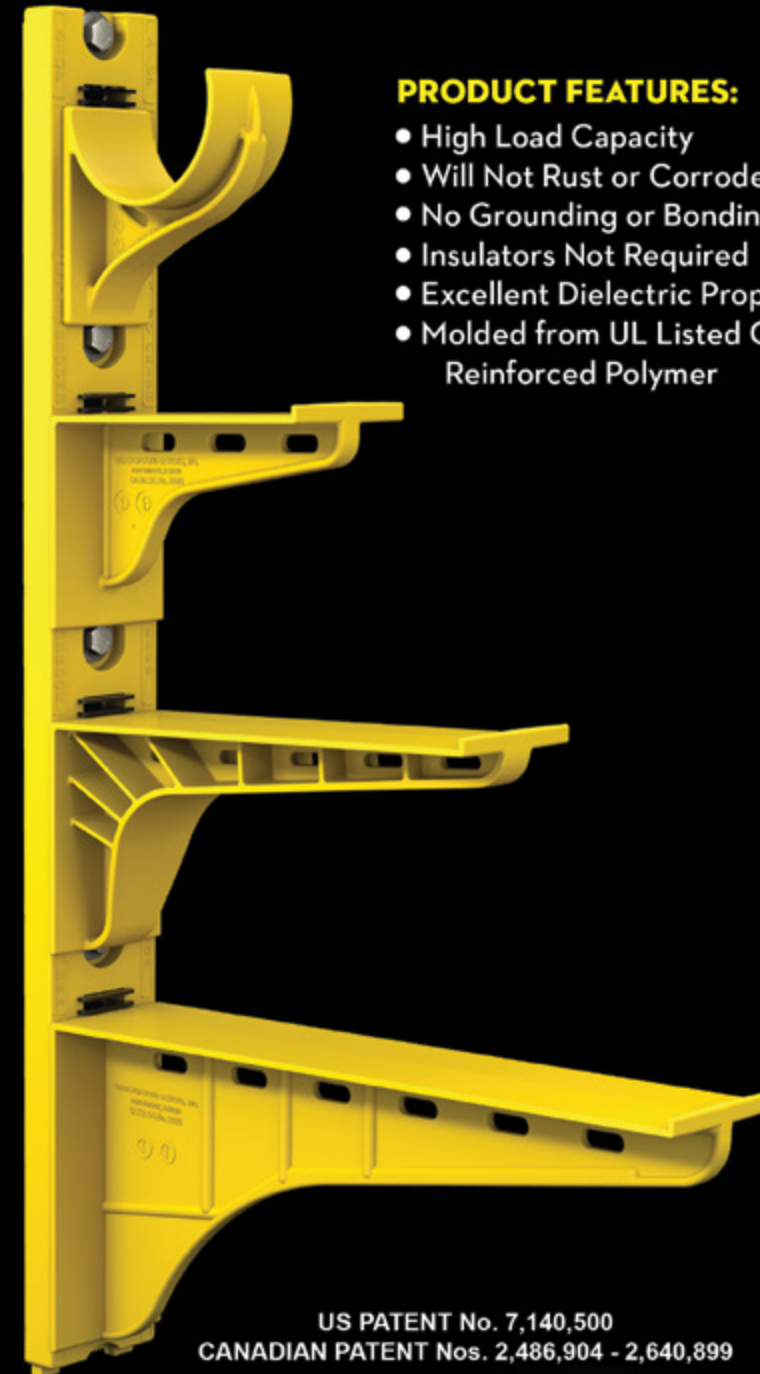
# The Heavy Duty Nonmetallic CABLE RACK

For Power and Communications Manholes And Vaults



## PRODUCT FEATURES:

- High Load Capacity
- Will Not Rust or Corrode
- No Grounding or Bonding
- Insulators Not Required
- Excellent Dielectric Properties
- Molded from UL Listed Glass Reinforced Polymer



US PATENT No. 7,140,500  
CANADIAN PATENT Nos. 2,486,904 - 2,640,899



HDL Arm Lock shown with  
RA04 Arm and CR36-B Stanchion



3HDS - 3" throat saddle shown with  
a cable secured by cable ties.



RA08 - 8" arm shown with three  
cables secured by cable ties.

**UNDERGROUND DEVICES**  
INCORPORATED



420 ACADEMY DRIVE  
NORTHBROOK, IL 60062  
Phone: 847-205-9000 • Fax: 847-205-9004  
Website: [www.udevices.com](http://www.udevices.com)



# Protect Yourself

## Miller Safety Consultants — A Leader in Arc Flash Protection

**Vince Miller started Miller Safety Consultants**, a veteran owned business in 1999. The goal of the business was to provide cost effective safety consulting, employee training such as: confined space entry, fall protection, electrical safety and provide sales of electrical shock and flash protective equipment and fall protection equipment to businesses in the Washington DC area.

Reliance Industries provided fall protection products and much of the sales and training was on behalf of the supplier. In 2000, the owner decided to retire from his business, and Vince decided to discontinue the fall protection line of his business and concentrate more in the electrical training and products.

Vince had been a distributor for Certified Insulated Products (CIP), a manufacturer of electrical insulated tools and electrical arc flash clothing manufactured by Otex in Rochester, New York. As a distributor, Vince provided sales through his internet website and much through relationships with electrical contractors. His training was a classroom environment and was provided directly to customers but he also taught as a sub-contractor for other safety consulting companies and the

Chesapeake Safety Council in Baltimore, Maryland. In 2005, Vince partnered with Vivid Learning Systems in Cascades, Washington to provide on-line training in safe work practices.

Training in electrical safe work practices is still provided locally in the Washington DC area and as a partner with an electrical engineering firm and online. The training is based on the Occupational Health and Safety Administration (OSHA) standards and the National Fire Protection Association (NFPA) 70E standard.

Miller Safety Consultants is now a distributor for Cementex USA, Burlington, New Jersey, for insulated tools and equipment and clothing from OTEX Protective, Rochester, New York.

The majority of his sales of products

are from the web-based store. Cementex is nationally known for their quality equipment. Otex Protective is becoming more known for their quality clothing. For years, they have manufactured their products under other provider labels. Vince chose to not create his clothing line, but to sell the manufacturer product.

Vince has worked with many electrical company employees to fine-tune the clothing to be more comfortable for the user. Working closely with the manufacturer, they have made slight changes in how the cloth pattern was modified to meet final production. An example is the lightweight 40 Calorie vented hood offered by Otex.

The material is of the latest technology. The vented assembly is constructed for balance on the back of the hardhat and the airflow is 27 CFM to prevent fogging of the face shield and provide cooling to the worker. It took over a year to develop the product with the user prior to having the hood “flash tested”. This product is now standard issue with many electrical contractors.

Being a small business and having quality providers has resulted in satisfied customers for Miller Safety Consultants. Being a direct supplier for OTEX Protective, another small business means customized customer needs can be met. □

For more information, visit  
Miller Safety Consultants at:  
[www.electricalsafetyproducts.com](http://www.electricalsafetyproducts.com), email  
Vince at: [sales@millersafetyltd.com](mailto:sales@millersafetyltd.com).

**AUTHORIZED**  
**Cementex**  
**The Safety Tool Specialists**  
**DISTRIBUTOR**

Give Vince a call at  
**(703) 367-0404**



Deluxe Maintenance Tool Kit



Class O Glove Kit

# Protect yourself from “Arc Flash”

We offer two lightweight 40 cal rated systems for employee protection -  
**PYRAD® Technology by GORE-TEX LABS**, single layer and the two layer **HYBRID (Protera/Indura)** models.  
Our unique V-5 ventilation systems using Milwaukee’s M12 rechargeable battery  
with our patented “arc flash sensor” technology.



Both lift hoods feature 30 CFM ventilators. The arc sensor automatically disconnects the fan power to stop the air flow and maintain a safe breathing zone within the hood.



CALL US TODAY  
**(703) 367-0404**

OR VISIT OUR ONLINE ELECTRICAL SAFETY EQUIPMENT STORE  
[www.electricalsafetyproducts.com](http://www.electricalsafetyproducts.com)





# The Future of Cable Management:

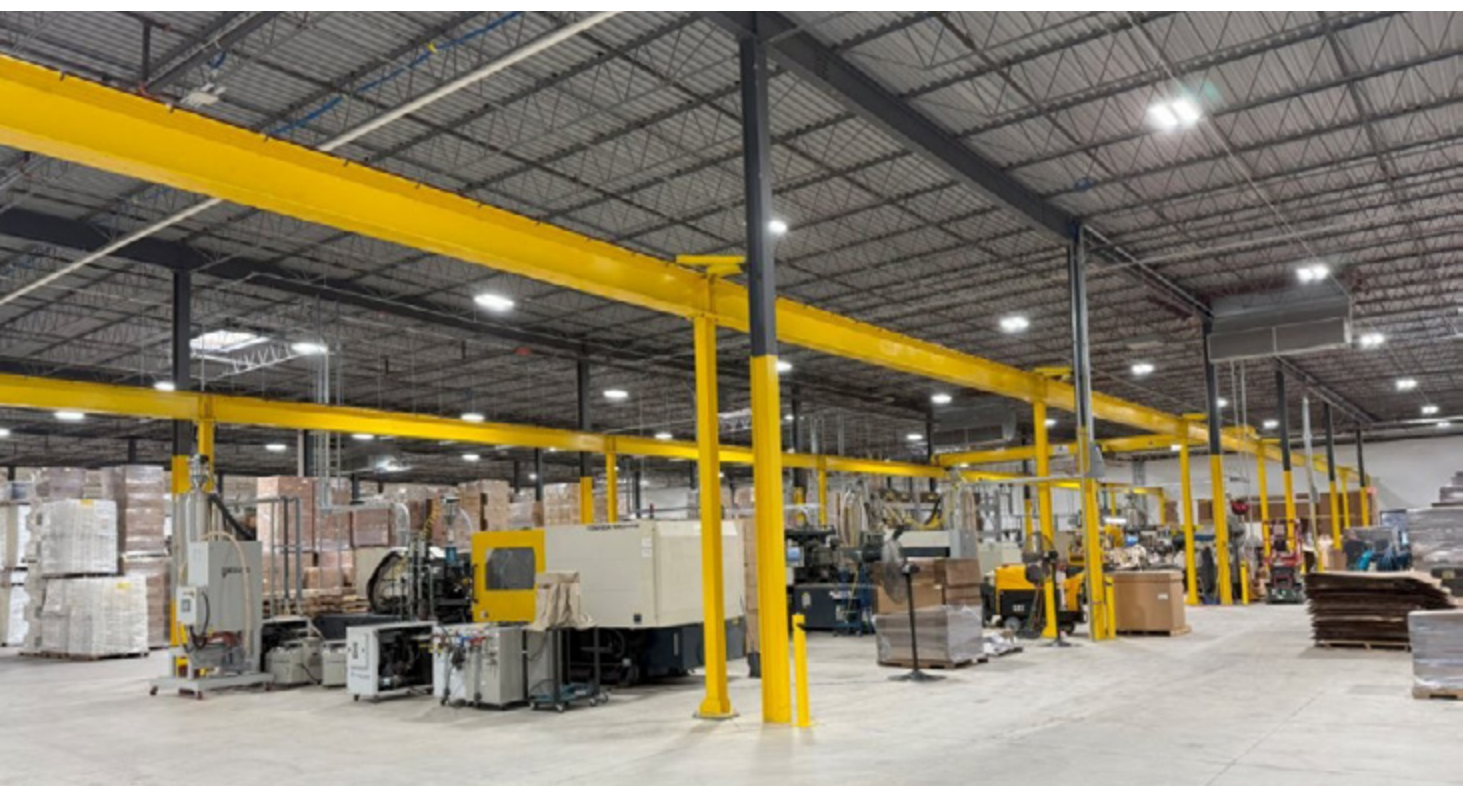
*Underground Devices' Heavy Duty Nonmetallic Cable Rack*

BY ABE FINKELSTEIN

**FOR OVER SIX DECADES,** Underground Devices, Inc. has been at the forefront of underground infrastructure solutions, delivering innovative products that solve the challenges of cable management in manholes, vaults, and tunnels. Among our most revolutionary products is the Heavy Duty Nonmetallic Cable Rack, a game-changing solution for utility professionals who demand durability, safety, and efficiency.

Heavy Duty Nonmetallic Cable Racks being utilized in a UPS hub vault.





Inside the new Underground Devices headquarters

**A Legacy of Innovation: The Underground Devices Story**

Underground Devices was founded with a singular mission: to develop high-quality, reliable products that improve the efficiency and longevity of underground cable installations. From our first molded nonmetallic cable rack in 1986 to today’s full line of robust cable management solutions, we have consistently set the industry standard for innovation and reliability.

Over the years, we have remained committed to research and development, ensuring that our products not only meet but exceed industry standards. Our unwavering dedication to quality has allowed us to forge lasting relationships with electrical contractors, utility companies, and municipalities who trust our solutions to keep their underground systems operating smoothly. Our customers know they can rely on us to deliver the best products in the industry.



Heavy Duty Nonmetallic Cable Racks

**AUTHORIZED DISTRIBUTOR OF**



**Deluxe Geared Maintenance Tool Kit**

**Cementex Double-insulated Tools:**

- Comply with the IEC 900 standard
- Comply with ASTM F1505-01 standard
- Help you meet requirements of OSHA Safety Related Work Practices, NFPA 70E Standard and CSA-Z462

**Cementex Double-insulated Tools are:**

- Tested to 10,000 VAC and rated for 1,000 VAC when working on live parts
- Manufactured in the USA with domestic and global materials.
- Marked with the international safety symbol – (double triangle) 1000V

**Class 00 Arc Flash Glove Kit**

Class 00 arc flash glove kit from Cementex is a good option for a reliable kit for work with 500 Volts or less. The gloves are made of natural rubber construction, offering the required dielectric properties combined with flexibility, strength, and durability. Gloves feature rolled cuffs, and are anatomically shaped thereby reducing hand fatigue. Each glove is chlorinated for maximum comfort.

**Components of Cementex IGTK00-11 glove kit:**

- 11” long Class 00 rubber insulating gloves
- Leather protectors
- Canvas storage bag



CALL US TODAY  
**(703) 367-0404**

OR VISIT OUR ONLINE ELECTRICAL SAFETY EQUIPMENT STORE  
[www.electricalsafetyequipment.com](http://www.electricalsafetyequipment.com)





Ribbon cutting at the new Underground Devices headquarters

Expanding to Serve You Better: Our New Buffalo Grove Headquarters

In 2025, Underground Devices is taking a monumental step forward by moving into a larger, state-of-the-art facility at 887 Deerfield Parkway, Buffalo Grove, IL. This expansion is all about our customers. With increased production capacity, expanded inventory space, and enhanced logistics, we will be able to deliver products faster and more efficiently than ever before.

This move marks a new chapter in our history, reinforcing our dedication to quality, innovation, and customer service. The new facility will enable us to respond more rapidly to market demands, ensuring that our products are always readily available. With greater efficiency in our operations, our customers will benefit from reduced

lead times, faster order fulfillment, and an even more reliable supply chain. Our decision to expand is a testament to the growing demand for our products and our commitment to meeting the needs of an evolving industry. We’re not just growing—we’re evolving to serve our customers better.

The Heavy Duty Nonmetallic Cable Rack: The New Standard in Manhole Racking

As the demand for safer, more durable, and cost-effective cable management solutions continues to rise, the Heavy Duty Nonmetallic Cable Rack stands as the gold standard. Designed to withstand the toughest underground conditions, this advanced racking system eliminates many of the drawbacks associated with traditional metallic racks.

Product Features:

- **Nonmetallic** – Will never rust or corrode, ensuring longevity and reliability.
- **High Load Capacity** – Matches the strength of comparable steel racks.
- **No Grounding or Bonding Required** – Simplifies installation and reduces material costs.
- **Molded from UL Listed Glass Reinforced Polymer** – Built for maximum durability and performance.
- **Excellent Dielectric Properties** – Provides superior insulation, eliminating the need for additional insulators.

Recognized as *Electrical Products & Solutions’* Top Product for the Last 5 Years, the Heavy Duty Nonmetallic Cable Rack is redefining efficiency and reliability in underground cable management. Utility professionals can rest assured that this product will stand the test of time, reducing maintenance and replacement costs while improving overall system performance.

Why Nonmetallic Outperforms Metallic Cable Racks

While traditional metallic cable racks have long been the industry standard, they come with numerous disadvantages that increase cost and maintenance concerns:

Challenges with Metallic Cable Racks:

- **High Installation Costs** – Requires additional materials like grounding and bonding components.
- **Rust and Corrosion** – Deteriorates over time, leading to frequent replacements.
- **Conductivity Issues** – Increases the risk of electrical hazards in manholes and vaults.
- **Ongoing Maintenance** – Needs constant inspection to ensure safe operation.

By contrast, our Heavy Duty Nonmetallic Cable Rack eliminates these problems, providing a long-lasting, maintenance-free alternative that saves time and money for utility companies and contractors. The nonmetallic composition ensures that



Appleton™ IJL LED Series Luminaires

Versatile and Adaptable Illumination for Any Environment

Appleton™ IJL LED Luminaires by Emerson are the premier jelly jar LED luminaires for industrial locations that offer versatile and adaptable illumination. With user selectable technology, they allow users to choose from a range of correlated color temperatures (CCT) and/or lumen outputs. Our engineers have developed specially designed optics that provide optimal light distribution – including uplight. The IJL LED Luminaires offer multiple mounting options such as wall, ceiling, and pendant, with an adjustable arm that allows precise rotation in 10° increments from 0° to 90°.

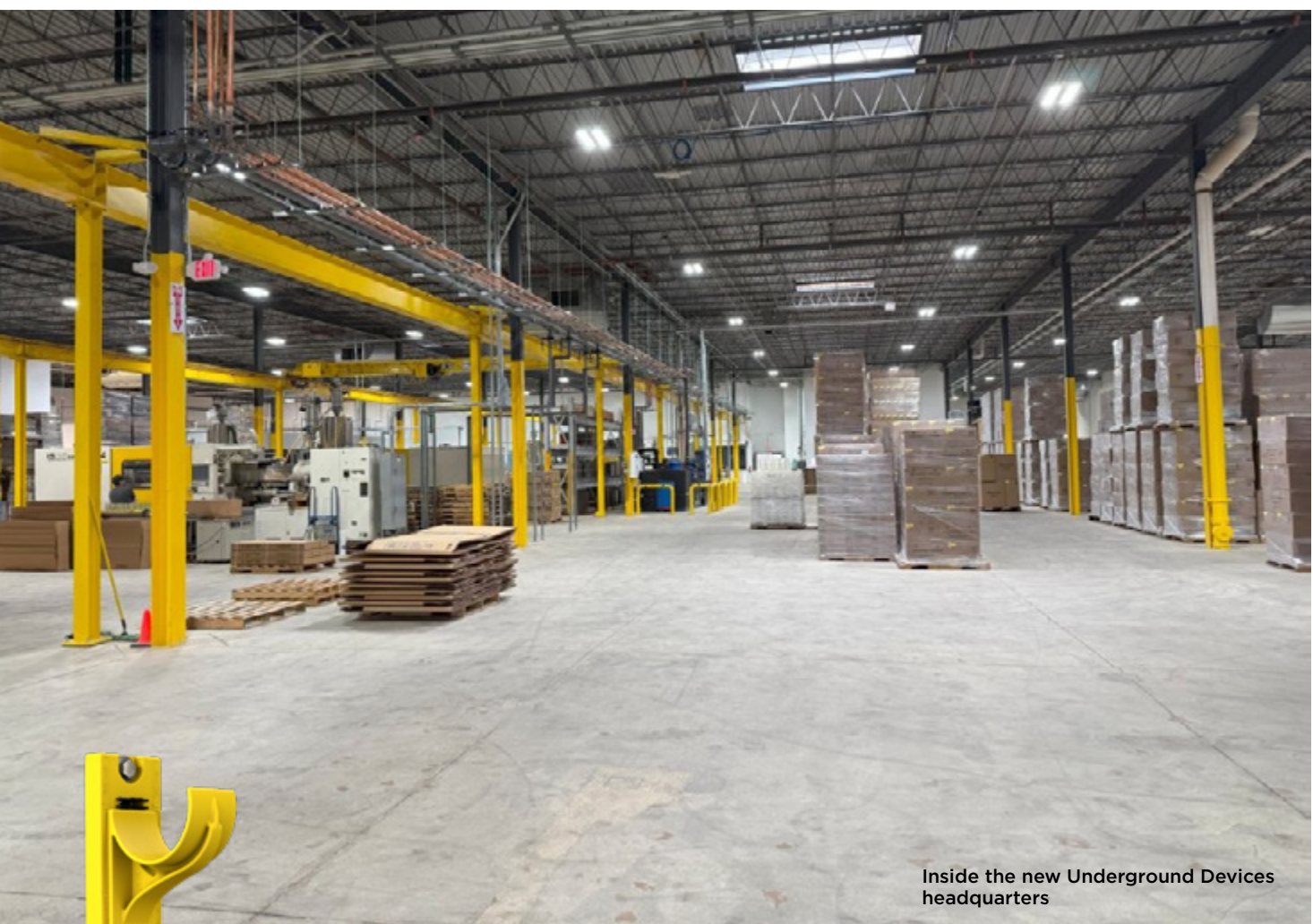
Learn More at: [www.masteringled.com](http://www.masteringled.com)



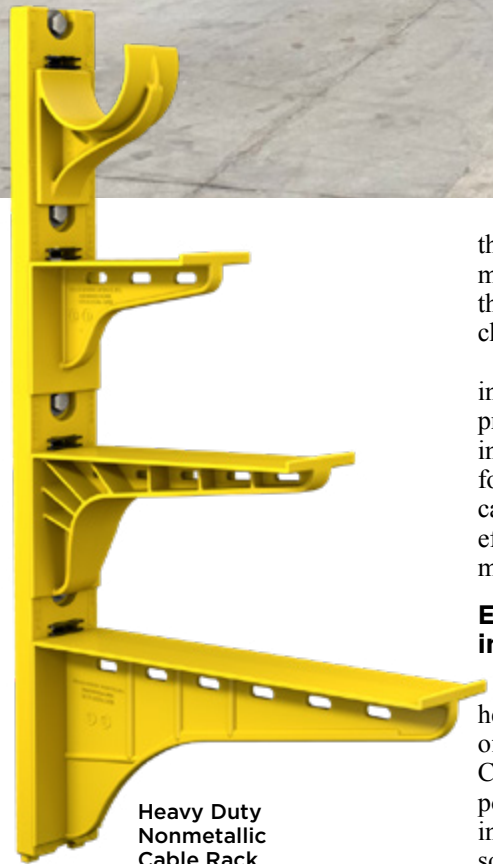
The Emerson logo is a trademark and a service mark of Emerson Electric Co. © 2024 Emerson Electric Co.







Inside the new Underground Devices headquarters



Heavy Duty Nonmetallic Cable Rack

these racks will not degrade in even the most challenging environments, making them a smarter and more cost-effective choice.

Additionally, the simplicity of installation makes these racks the preferred solution for large-scale infrastructure projects. Without the need for grounding or insulators, projects can be completed more quickly and efficiently, reducing overall labor and material costs.

**Expanding Our Impact in the Industry**

With the launch of our expanded headquarters and the continued success of the Heavy Duty Nonmetallic Cable Rack, Underground Devices is positioning itself as an industry leader in underground cable management solutions. Our increased production

capacity, commitment to innovation, and customer-first approach ensure that we will continue to deliver the best products with unmatched efficiency.

We are proud to lead the industry with products that not only meet the evolving needs of underground infrastructure but also provide long-term reliability and cost savings. Our dedication to research, development, and manufacturing excellence ensures that we remain at the forefront of underground cable management technology.

As we look to the future, one thing remains clear: Underground Devices is not just meeting industry standards—we are setting them. Through our expansion, innovation, and customer-driven approach, we are cementing our reputation as the go-to provider for advanced, durable, and reliable cable management solutions. □



IWL LED Series Luminaires

**Wall Pack LED Lighting for Industrial Facilities**

The Appleton™ IWL LED Series Luminaires by Emerson are designed to provide safe illumination at outdoor entrance doors and along the exterior of commercial and industrial facilities. Three models — each with three field selectable wattages (lumen outputs) and three field selectable color temperatures — ensure the perfect configuration for your unique application requirements. Improve employee safety and security with the IWL's bright, cost-efficient illumination.

**Learn More at: [www.masteringled.com](http://www.masteringled.com)**

**APPLETON™**

The Emerson logo is a trademark and a service mark of Emerson Electric Co. © 2024 Emerson Electric Co.







# Sensor Technology for Quality of Life in Cities

Smart city concepts allow cities and municipalities to adapt to efficient resource management and improve quality of life for residents. Traffic, energy consumption and waste disposal can all become more sustainable with the help of real-time data collected by sensors. In addition, today's urban areas are increasingly typified by smart buildings with a power supply that is as autonomous and sustainable as possible. In order to equip a city with suitable

sensors, different requirements need to be taken into account. Sensors that process optical information require light in order to achieve optimum results. The sensors' power supply must also be guaranteed. In addition, different areas of application also require different types of sensors. Solutions that address these challenges and are therefore suitable for use in cities are available. Tridonic has developed the SensorX, which offers various advantages for use in public spaces and also ensures data is protected.

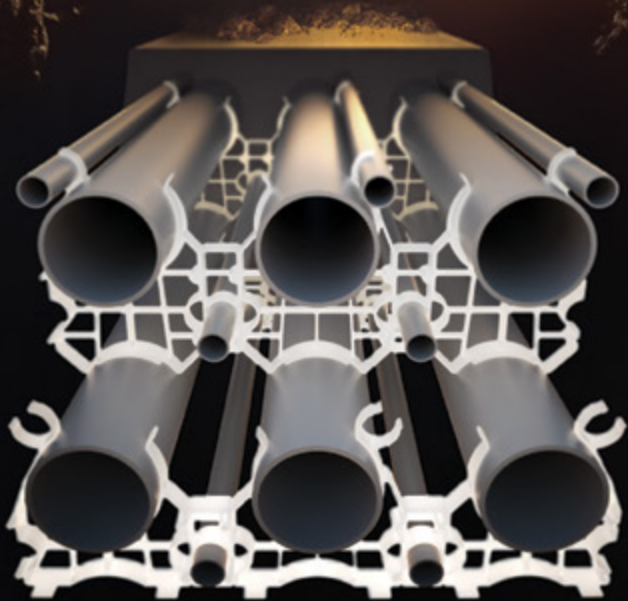
**State-of-the-Art Sensor Technology for Use in the City**

SensorX, our AI-based sensor, allows us to optimize street lighting efficiently and sustainably. Our technology saves energy, reduces light emissions and enables precise detection and differentiation of road users, helping us contribute to the smart planning of public spaces and transport systems – always with a focus on data protection and innovation. Today's motion sensors detect when something moves within the radius of



With the help of SensorX, street lighting can be adjusted based on demand.

# THE SECRET TO UNDERGROUND POWER TRANSMISSION



OUR WUNPEECE TRANSMISSION SPACERS REDEFINE THE INDUSTRY STANDARD FOR UNDERGROUND POWER TRANSMISSION INSTALLATIONS. WITH PRECISION ENGINEERING AND UNMATCHED QUALITY,

JOIN THE RANKS OF INDUSTRY LEADERS WHO TRUST UNDERGROUND DEVICES FOR THEIR POWER TRANSMISSION NEEDS.



VISIT [WWW.UDEVICES.COM](http://WWW.UDEVICES.COM)

AND EXPERIENCE THE FUTURE OF UNDERGROUND POWER INSTALLATION





Sensor X uses machine vision to monitor both indoor and outdoor environments accurately.

the sensor, making them very reliable inside buildings. In outdoor areas, however, motion sensors are prone to error. Depending on the setting and surroundings, they can also be triggered by animals, trees or even heavy rain showers or snowfall. This inaccuracy leads to the lighting being incorrectly triggered and thus to avoidable power consumption. The new SensorX, on the other hand, uses image processing (machine vision) to deliver precise results.

“Many machine vision solutions require a lot of computing power and electricity and are therefore not economical or sustainable enough for widespread use”, explains Eduardo Pereira, Product Manager Outdoor Controls at Tridonic. “With the SensorX, we have succeeded in reducing the power and hardware performance requirements of the device itself to a minimum. The magic happens in the interaction between the hardware and software and offers the perfect solution for use in cities, allowing us to save data, costs and electricity.”

For the analysis, the SensorX captures up to five images per second. Images are processed in the sensor itself. They are used exclusively for the analysis, are not saved and cannot be exported. The SensorX has no internal memory and complies with data protection regulations, which means it can be used without hesitation in urban environments.

Access to the sensor for set-up or readjustment is protected; access by third parties is not possible. For this purpose only, images are transmitted to a smartphone or tablet to enable the definition of zones. In this case, the transmission is encrypted. Only

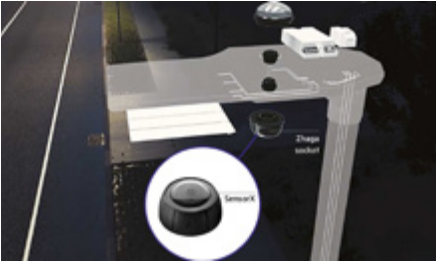
the zones that are individually defined during commissioning are analyzed. The sensor then only takes movements in this area into account and recognizes that something is moving in the selected zone. In future, it will also be possible to distinguish between pedestrians and cyclists and even recognize different types of vehicles.

**Simple Installation and Retrofitting**

The SensorX is installed directly on the Zhaga-D4i interface (Zhaga Book 18 Ed. 3 Connection) of the street lights, making it ready for use immediately after installation and set-up. If local authorities are already using luminaires with a Zhaga D4i interface, the SensorX can be easily retrofitted, transforming the street lights into smart components in just one easy step. Firstly, installing SensorX on the street light has the advantage of ensuring sufficient light is available to the sensor at all times. The sensor is equipped with a light detector

that regulates the lighting conditions so that movements can be reliably detected. Secondly, it uses the existing power supply of the luminaire. This type of installation is only possible thanks to the economical consumption of less than one watt, making the SensorX DALI type B-compliant.

Data and information obtained through image processing are transmitted via DALI to lighting control systems for street and park lighting, city management systems or software for controlling traffic



Tridonic's AI-based SensorX detects activity on roads and pavements so they can be accurately illuminated by street lights consuming minimal power.



In the future, it will also be possible to recognize different vehicle types with the SensorX.

*We're Proud to be the Electricians' Friend for Over 50 Years!*

**IP19**

**4-Conduit Block**

Vertical support from only one 1/4", 3/8" or 1/2" threaded or threadless rods 1/4" or 3/8" threaded holes on the side along with slots for hex head bolts for hardware are provided for conduit support.



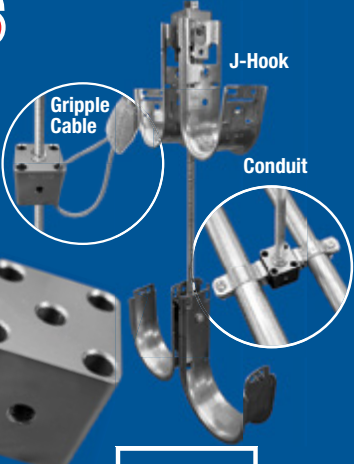
**IP21a**

**QwikBlock**

Vertical support from only one 1/4", 3/8" or 1/2" threaded rod by attaching two machine screws 1/4" x 20 thru the existing holes in back of the box. Eliminates knocking out center KO on box and traditional nut and washer method to support a single box.



**New Products**  
**Safer Better Faster**

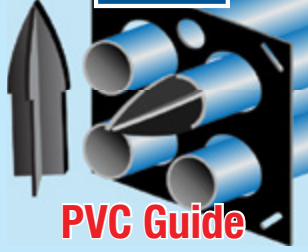


**IP20a**

**Box Support Rod Cubes**

Vertical support from only one 1/4" or 3/8" threaded or threadless rod with 4 holes for Gripple applications as well as 4 threaded 1/4" or 3/8" holes for conduit support hardware.

**IP3e**



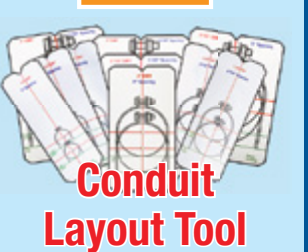
**PVC Guide**

**IP2b**



**PVC Driver**

**TE15**



**Conduit Layout Tool**

**IP3g**



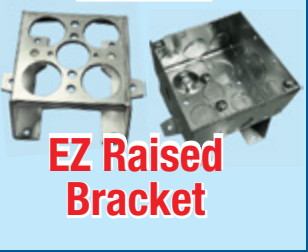
**Long Slip PVC**

**IP3f**



**Slip PVC/RGD**

**IP4**



**EZ Raised Bracket**

**For more information visit our website at [SPProducts.com](http://SPProducts.com)**

*Plus More Being Invented for SAFER BETTER FASTER Jobs . . . Call With Your Ideas!*





During a pilot project, the South Korean city of Gimpo commissioned smart streetlights, both benefiting the environment and saving costs: monthly electricity consumption fell by around half.

light systems. The data can then be analyzed or used to control the systems directly.

Targeted Lighting

Sensor-controlled lighting offers a range of benefits, ensuring greater safety on roads and paths, for instance. The SensorX detects when pedestrians or vehicles are in the vicinity. This information can be used to program adaptive lighting scenarios, for example to dim the lights during low-traffic periods and brighten roads and paths again when the traffic flow increases, allowing people to move around at night with safely illuminated streets and paths without the need for the entire city to be always illuminated. Using SensorX in this way also has another positive side effect: illuminating the paths only when they are being used reduces light emissions, because when there is nobody on the roads, less light is needed. Sensor-based lighting control therefore not only helps improve safety, but also the well-being of the population. In addition, spot lighting and dimming during quiet periods saves electricity and thus reduces municipal energy costs. In a pilot project in which one sensor controlled up to five lights, this led to potential savings of around 50 percent.

Real-time Parking Space Management

Sensor-based occupancy displays are nothing new in car parks and underground car parks. Until now, urban planners have often relied on magnetic sensors embedded in the pavement or flooring. When used outdoors, however,

these sensors are often prone to errors, for example during a heavy snowfall. And if the parking area is changed, they also have to be painstakingly dug up and relocated. In the long run, this is not only inconvenient, but also expensive, and leaves little scope for flexibility.

With the SensorX, the parking zone can be precisely defined during commissioning. The sensor then analyses the average presence of vehicles in the selected area over the previous ten minutes and indicates the areas in which vehicles are parked. If changes to the parking spaces require the parking zones to be redefined, this can be done on site in just a few minutes using a smartphone or tablet via Bluetooth, without having to remove or modify the sensor.

The Future of Sensor Technology

Another area of application for the SensorX is currently in the development and test phase. Measuring traffic density and optimizing traffic flow offers many possibilities beyond lighting control. The sensor counts how many vehicles pass through the specified zone at definable intervals of 20 seconds to ten minutes. The resulting data will enable urban planners to draw important conclusions, helping them see where traffic jams and tailbacks often occur and which roads are used more or less frequently than expected. Using this data, they will be able to optimize road layouts, adjust traffic light sequences or open up additional lanes for traffic.

In future, it will be possible to monitor urban traffic jams even more closely and to prevent them by measuring the



SensorX makes parking zones easy and uncomplicated to manage.

data, thereby reducing CO2 emissions. This technology can also be applied in parks and green spaces, potentially to re-naturalize underused paths or create new paths based on movement patterns.

Sensors can therefore be installed in almost all public places in the city to ensure greater safety and smoother traffic. They help urban planners optimize road traffic and ensure greater safety for road users. The money saved thanks to the lower power consumption means the cost of installing the sensors is usually amortized in the first year. The technology also helps protect the climate and make our cities smart. □



The SensorX from Tridonic measures the number of vehicles, bicycles and pedestrians, as well as the presence of people for street lighting and traffic measurement.



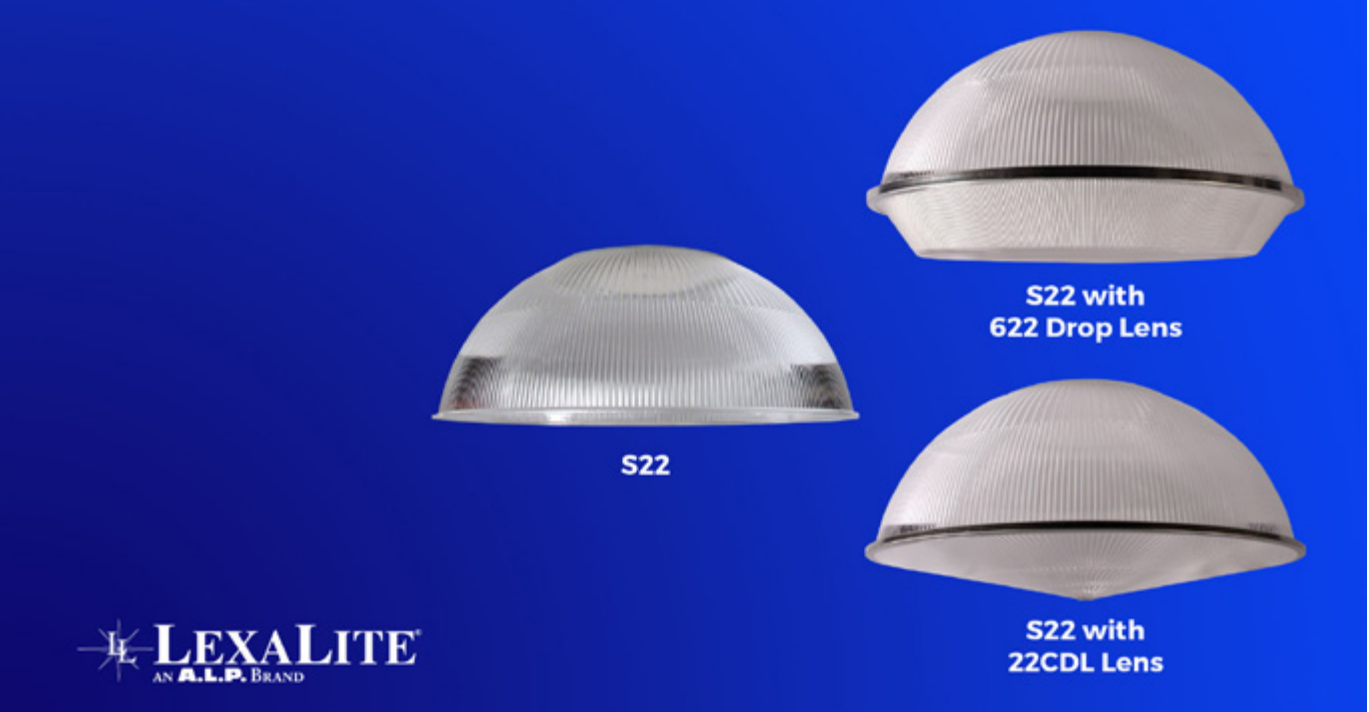
CANNON iK

ELIMINATE HAND PULLS & INCREASE JOBSITE EFFICIENCIES.





# A.L.P.® Appoints Jeff Schirm as Southern Region Manager to Drive Growth in Custom Molding



A.L.P.® is pleased to announce the appointment of Jeff Schirm as Southern Region Manager, based out of the company's ISO9001-certified manufacturing facility in Dickson, TN. Jeff brings over 20 years of experience in engineered plastics, with a strong background in working directly with some of the world's largest manufacturers and their mechanical design engineering teams across the globe.

Throughout his career, Jeff has developed deep expertise in a wide range of base materials with precise specifications for form, fit, and function. He has actively supported

17 diverse markets that demand strict manufacturing standards and has managed both direct and independent sales representatives throughout North America. His experience also includes overseeing customer-driven capital equipment projects in manufacturing and distribution environments, handling complex requirements from system design to project management and implementation.

In his new role at A.L.P., Jeff will focus on generating and serving custom molding business, targeting markets outside of lighting, including automotive, medical, appliance and HVAC.

Located in the thriving Nashville Metropolitan area, Jeff is well-positioned to engage with some of the country's fastest-growing companies. His extensive plastics industry knowledge and local market insight will play a pivotal role in expanding A.L.P.'s reach into these high-growth sectors.

"We are excited to welcome Jeff to the A.L.P. team," said Tom Barnes, Vice President and Business Manager at A.L.P. "His expertise and leadership will be instrumental as we broaden our custom molding capabilities and strengthen our presence in new markets." □

**ABOUT A.L.P.**  
A.L.P. is an industry leader in providing high-quality lighting components and custom molding solutions. With state-of-the-art facilities and a commitment to innovation, A.L.P. serves a wide range of industries with precision-engineered products that meet the highest standards of quality and performance. For more information or images, contact Lisa Yeadon, Director of Marketing Communications, at (773) 792-5648 or email to: [lisayeadon@alplighting.com](mailto:lisayeadon@alplighting.com)





## Install Peace of Mind!

First there was 4 square...  
and now the **REVOLUTIONARY 5 Square®** Box!!

You've struggled with 4 Square boxes for years - you know how small, cramped and time consuming they are. Finally, there is a solution that allows you the space you have always needed.

The **5 Square®** Boxes (5" x 5" x 2-7/8") provide up to 88 in<sup>3</sup> of interior volume which more than doubles that of most existing boxes on the market.

Create a robust and unrivaled infrastructure for the life of your facility with the **5 Square®** Products!

### Fire Signal



- TWICE THE VOLUME AS MOST BOXES
- SAVE LABOR...INCREASE PROFITS
- ELIMINATES TROUBLESHOOTING TIME AND COST
- FULLY UPGRADEABLE SYSTEM
- SPECIFIED BY ENGINEERING FIRMS, HOSPITALS, UNIVERSITIES & GOVERNMENT AGENCIES
- AVAILABLE IN ZINC OR RED

### Telecommunications



- INTEGRAL CABLE MANAGEMENT
- SAVE LABOR...INCREASE PROFITS
- FACILITATES MIN. BEND RADIUS REQUIREMENTS
- SUPPORTS CURRENT AND EVOLVING SYSTEMS
- SUPPORTS PoE PLUS
- SPECIFIED BY ENGINEERING FIRMS, HOSPITALS, UNIVERSITIES & GOVERNMENT AGENCIES





P: 509.340.0050 • F: 509.340.0051  
See our line of telecom & fire signal boxes at: [www.RANDL-INC.com](http://www.RANDL-INC.com)  
*Making Communications & Fire Protection More Reliable & Cost-Effective!*



# Mitsubishi Electric Automation and Arrow Speed Controls Celebrate Four Decades of Collaboration in Canada



Since the 1980s, Arrow Speed Controls and Mitsubishi Electric Automation have delivered automation solutions that address challenges specific to customers in heavy industries to bring the high-est value to customers. Mitsubishi Electric Automation, Inc. (Mitsubishi Electric Automation) and Arrow Speed Controls celebrate over four decades of collaboration in Canada. Together, they have successfully delivered numerous automation solutions that improve performance, enhance cost ef-ficiency, and deliver operational excellence, driving growth for Canada’s most critical industries. Since the 1980s, their collaboration has pro-vided custom-engineered solutions that meet the demands of manufac-turing, oil and gas, water and wastewater, mining,

forestry, and other sectors. With over 100 years of innovation, Mitsubishi Electric Automation pro-vides high-quality, high-performance, and compatible automation solutions designed to meet the demands of complex industrialapplications and challenges of rugged environments. Mitsubishi Electric Automation partners with trusted organizations to effectively implement its advanced technologies and deliver value in response to its customers’ evolving needs. “This anniversary is a reflection of what’s possible when two companies align their strengths,” said Milton Coleman, Sr. Vice President Sales & Marketing, Mitsubishi Electric Automation. “Together, we’ve consistently delivered solutions that

address challenges specific to customers in heavy industries. We help our customers produce more accurately, reducing energy consumption and material waste, all while achieving their productivity goals.” Arrow Speed Controls is one of North America’s leading VFD integrator and a solutions provider for Mitsubishi Electric Automation in Canada. “Our collaboration with Mitsubishi Electric Automation has allowed us to offer solutions for automation and system integration that improve how businesses operate and compete,” said Peter Rees President of Arrow Speed Controls. “Celebrating nearly a half-century of serving customers together reflects the strength of our collaboration and how we’ve deliv-ered technologies and expertise to meet or exceed their expectations.” Arrow Speed Controls is a member of Madison Industrial Group, a conglomerate of companies which serve the Canadian industrial sector with leading technologies and services. “This generational collaboration with Mitsubishi Electric Automation is another example of how our two organi-zations have been able to sustain a focus on bringing the highest value to customers through innovative solutions,” says Gary Reid, President and CEO of Madison Industrial Group. As Mitsubishi Electric Automation and Arrow Speed Controls move forward, they remain focused on advancing industrial automation, driv-ing operational efficiencies, and delivering complete solutions that address the challenges faced by the Canadian heavy industries. For more information about Arrow Speed Controls, visit <https://www.arrowspeed.com/>. For more information about Mitsubishi Electric Automation, visit <https://us.mitsubishielectric.com/fa/en/>. □

**ABOUT MITSUBISHI ELECTRIC AUTOMATION, INC.** Headquartered in Vernon Hills, Ill., Mitsubishi Electric Automation, Inc. is a U.S. affiliate company of Mitsubishi Electric Corporation. It offers a broad product portfolio including programmable automation controllers (PAC), programmable logic controllers (PLC), human machine interfaces (HMI), variable frequency drives (VFD), servo amplifiers and motors, control software, computerized numerical controllers (CNC), motion controllers, robots, low-voltage power distribution products, and industrial sewing machines for the industrial and commercial sectors. Additional information about Mitsubishi Electric Automation is available at [us.MitsubishiElectric.com/fa/en](https://us.mitsubishielectric.com/fa/en).



# Dynamic® Introduces Insulated T-Handle Hex Key Sets

The Dynamic® tool brand now offers insulated T-handle hex key sets, available in both metric and SAE sizes. Designed to meet the growing needs of electric vehicle (EV) mechanics, millwrights, commercial and residential electricians, and mobile technicians, the hex keys are VDE certified to 1,000 VAC in compliance with IEC 60900. Dynamic’s SAE set includes six pieces ranging in size from 5/32” to 3/8”. The six-piece metric set ranges from 2.5 to 8 mm sizes. Each tool features an ergonomic comfort-grip handle for easy operation and a secure, non-slip grip. Precision-machined black oxide tips provide an exact fit, and the tip size is clearly marked on the handle for quick identification. For maximum reliability every piece undergoes a rigorous multi-step insulation process. Then, each tool is charged with 10,000 volts of energy for 180 seconds to ensure its insulation resists potential electric shock. Other tests are performed to verify the flame resistance and durability of the insulating material. The insulated tool sets are backed by a limited lifetime warranty. They can be purchased at [shopdynamictools.com](https://shopdynamictools.com), [amazon.com](https://amazon.com) and other reputable online retailers. Introduced in 2009, the Dynamic® tool brand was created by Gray Tools, a renowned North American manufacturer and distributor of premium hand tools founded in 1912, to meet the need for high quality tools at a budget-friendly price. Today, the Dynamic line consists of more than 2,500 products, including sockets, wrenches, pliers, hammers, chisels, locking tools and clamps, which are fully serviced and warrantied by Gray Tools.

For more information, visit [www.ShopDynamicTools.com](https://www.ShopDynamicTools.com)



# Eaton’s Wiring Devices Expands its Family of Reliable, Code-Compliant Hospital Grade Devices

Eaton’s Wiring Devices has expanded its offering of healthcare receptacle solutions with the launch of its hospital grade EZ Link™ Modular Decorator and Duplex Receptacles and Slim GFCI Receptacles. The code-compliant healthcare devices are an expansion to its popular lines of innovative, quick install devices, addressing efficient and labor-saving solutions.



The EZ Link Modular Decorator and Duplex Receptacles boast an intuitive arrow-shaped design, allowing the connector to slide and lock into place on the back of the device, ensuring a secure connection. Guide rails are molded into the back of each device for accurate alignment to reduce installation errors. Release wings provide an easy, one-handed release of the device. The EZ Link devices enable installers to wire a connector during rough-in and easily and quickly install the device at trim-out, saving time and skilled labor hours. The Slim Hospital Grade GFCI Receptacles, offered in Standard, Tamper Resistant and Tamper and Weather Resistant models, feature a 1.03-inch depth profile; wider TEST/RESET buttons; and an intuitive large reset indicator light, which allows the user to easily identify a trip incident to quickly reset the device, eliminating unnecessary contractor call backs. In case of a unit failure, an end-of-life indicator light flashes red for easy identification of a device failure. The receptacles are also easily identifiable with noticeable hospital grade identification markings. Proven to protect with compliance with the latest UL and NEC safety standards, these reliable additions provide the needed electrical protection that is essential to patient care.

For more information, visit [www.Eaton.com/WDHealthcare](https://www.Eaton.com/WDHealthcare)





**SP PRODUCTS, INC.**  
Productivity and value thru ideas  
**FOR SAFER BETTER FASTER JOBS**

2024 NECA  
**ShowStopper**  
WINNER



Saves a great deal of time transitioning from PVC conduit to Rigid Conduit above slab without damaging PVC risers and chipping concrete eliminating a concrete repair job!

All SP Products Inc. Transition Fittings are manufactured for installation to either meet or exceed in accordance with NEMA TC2, TC3 or UL 651 specifications

# Galvanized Rigid Transition Couplings to Schedule 40/80 PVC Stub-Up

**When Concrete is Poured and Metal Below the Slab is Needed**

**Transitions in Less Than 5 Minutes!**

**Save Cost on the Rigid Nipple, Tape & Labor**

**Use for Entire Job - Not Just for Repair**



Save at Least **1 Hour** per Installation.

See Our Conduit Plug  
See page IP27c



See Our REAMING BITS for Transition Couplings



See page IP15

PATENT PENDING

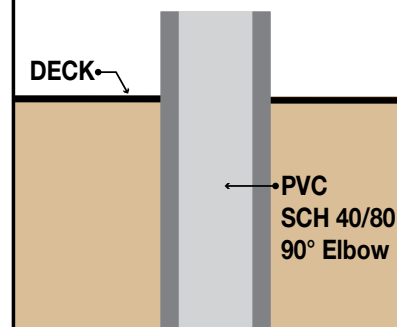
**1/2" thru 6"**

## Transition Couplings

Size	Catalog #
1/2"	50-PVC-R-GRC
3/4"	75-PVC-R-GRC
1"	100-PVC-R-GRC
1-1/4"	125-PVC-R-GRC
1-1/2"	150-PVC-R-GRC
2"	200-PVC-R-GRC
2-1/2"	250-PVC-R-GRC
3"	300-PVC-R-GRC
3-1/2"	350-PVC-R-GRC
4"	400-PVC-R-GRC
5"	500-PVC-R-GRC
6"	600-PVC-R-GRC

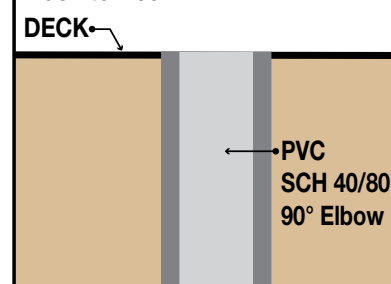
All Above Meet UL651  
CSA C22.2, No.85 and  
US Army Corps Engineers  
Specifications

### STEP 1



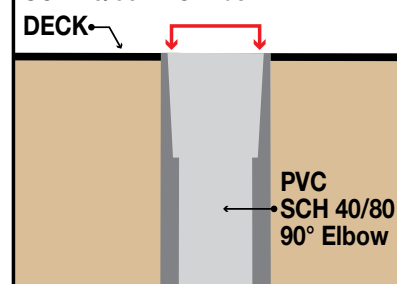
### STEP 2

Cut SCH 40/80 PVC Elbow Flush to Deck

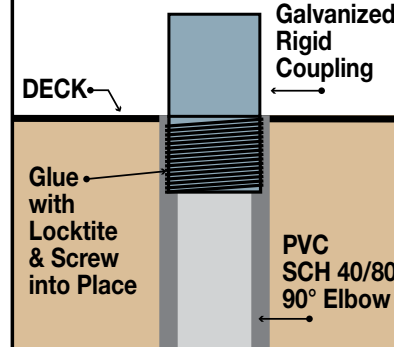


### STEP 3

Ream out 1/2 of wall thickness SCH 40/80 PVC Elbow



### STEP 4



**Customer must satisfy all codes and owners' specifications.**

**SP PRODUCTS, INC.**  
Productivity and value thru ideas



PATENT PENDING  
PATENTED



**LABELS APPLY TO PRODUCTS ONLY WHERE SHOWN ABOVE**

730 Pratt Boulevard • Elk Grove Village, IL 60007  
P: (847) 593-8595 • F: (847) 593-8629 • Toll-free (800) 233-8595  
E: info@spproducts.com • www.spproducts.com



NEWPRODUCTS

Greenlee® Launches New G6 Turbo™ Puller for Electrical Contractors

Safely pull heavy loads up to 6,000 pounds at faster speeds, and reduce downtime

Greenlee Textron Inc., a Textron Inc. company, introduces the G6 Turbo puller to improve contractor speed and efficiency. Capable of pulling 6,000 pounds of force, the G6 Turbo model pulls up to 60-percent faster than the competition\*.

“Industry professionals told us that they need a tool that confidently and safely pulls thousands of pounds of cable without breaking down,” said Jae Lee, Greenlee product manager for pulling, fishing and bending. “Contractors who have used the new G6 Turbo puller are impressed with its capabilities.”

The 120-volt AC drive motor can pull 6,000 pounds of maximum force and 4,000 pounds continuously. Dual capstans on the G6 Turbo puller deliver faster pulling speeds across the entire load spectrum of the pull. Control boards monitor the current draw of the G6 Turbo puller motor and protect it from over loading the puller. Built-in spring loaded pins allow for quick changeovers, easy setup and eliminate the hassle of loose pieces.

“The G6 Turbo puller’s patent pending design removes the need for conduit feedings. The operator simply clamps the puller to the conduit and starts the pull,” Lee said.

The G6 Turbo puller is equipped with features to reduce downtime and injuries. A footswitch safely controls motor power without the operator placing themselves in front of the rope. The 125-pound G6 Turbo puller is built on a dolly, making it easier to move the unit from worksite to worksite. Handles on the dolly and the boom allow operators to easily and ergonomically adjust for height. A gearbox feature prevents rope and cable tension from pulling back into the conduit when the operator stops pulling. Setup time is faster and easier than other pullers on the market.

Electrician crews rely on pullers to complete jobsite tasks daily. Recently, Greenlee demonstrated how the G6 Turbo puller supported crews onsite as they worked to build a new school in Nebraska. The jobsite general contractor, New Generation Construction, had over 800 feet of cable for the Nebraska Electric Services crew to pull.

Emerson’s professional tools business includes Greenlee as well as the RIDGID® and Klauke® brands and provides the industry’s broadest portfolio of advanced, reliable tools and technologies for the mechanical, electrical and plumbing trades globally.



For more information, visit [www.emerson.com/professionaltools](http://www.emerson.com/professionaltools)



Kwikon® Electrical Nonmetallic Tubing

Kwikon® Electrical Nonmetallic Tubing (ENT) stands out with its exceptional strength and flexibility, making it the ideal choice for various construction applications. Kwikon® ENT is non corroding and nonconducting, ensuring durability even when encased in concrete or concealed in walls. Its unique corrugated construction allows easy hand bending without special equipment, saving time and effort on the job site. The six-locking tab Kwikon® couplings and connectors ensure a secure and integrated system, eliminating the need for solvent welding or tape around connections. Made of impact-resistant PVC, Kwikon® ENT is tough enough to withstand crushing and breaking, offering reliability and longevity for residential, commercial, and institutional projects.

For more information, visit [www.Ipexna.com](http://www.Ipexna.com)

Celebrating 70 YEARS of American Made Craftsmanship and Innovation



Electrifying conduit, innovation and service for 70 years

Since 1955, Electri-Flex has been building cities across America and around the world, serving clients with innovative conduit solutions, superior customer service and genuine family pride. Our signature Liquatite® flexible conduit line is made in Chicagoland to our exacting standards and is built to withstand even the most challenging of conditions. And with nearly 50 options to choose from, we will always find a solution that’s exactly right for you. After all: *flexibility matters.*



**Electri-Flex Company**  
222 West Central Avenue  
Roselle, IL 60172-1994 USA  
Toll-free phone (U.S.): (800) 323-6174  
Phone: (630) 529-2920  
Fax: (630) 529-0482  
[www.electriflex.com](http://www.electriflex.com)  
DISTRIBUTORS NATIONWIDE  



NEWPRODUCTS

Power Meets Portability: The Ultimate Rotary Hammer for Professionals

Milwaukee Tool continues to demonstrate their commitment to the professional trades with the introduction of the M18 FUEL™ 5/8" SDS Plus Rotary Hammer, expanding their robust rotary hammer lineup. The new M18 FUEL™ 5/8" SDS Plus Rotary Hammer is a compact, high-performance solution that is tailored to the needs of mechanical, electrical, plumbing, facility maintenance, and remodeling professionals. Designed to maximize productivity on the jobsite, this rotary hammer delivers the power needed for demanding applications while maintaining a lightweight, ergonomic design for all-day use. With advanced safety features and enhanced comfort, this solution ensures professionals can work efficiently even in the most challenging environments.

Engineered for unmatched speed and efficiency, the M18 FUEL™ 5/8" SDS Plus Rotary Hammer delivers 1.3ft-lbs of impact energy, 1,400 RPM, and 5,100 BPM, making this rotary hammer the fastest 3/8" drilling solution in its class. Featuring a POWERSTATE™ Brushless Motor, this solution is engineered to deliver the power needed for high-demand applications. Milwaukee's new rotary hammer is also equipped with REDLINK PLUS™ Intelligence, ensuring optimal performance while protecting against overload, overheating, and over-discharge.

In addition to power, this rotary hammer is incredibly compact, measuring just 10 inches in length and weighing only 3.8lbs bare tool and 7lbs when paired with the new M18 FUEL™ HAMMERVAC™ 5/8" Dedicated Dust Extractor and battery. While compact in size, this rotary hammer delivers the power needed to tackle the toughest concrete applications, making this an essential solution for demanding jobsites.

Built to maximize productivity, Milwaukee's new rotary hammer enables users to drill up to 89 holes per charge (1/4" x 2") when paired with the M18™ REDLITHIUM™ High Output CP3.0 Battery, ensuring efficiency on the jobsite. With three modes of operation—Hammer Drill, Drill Only, and Chisel—the third mode is a brand-new feature of the compact rotary hammer, delivering the versatility and precision needed for challenging tasks. To further enhance user experience, the AVS Anti-Vibration System reduces fatigue during extended use, allowing for all-day comfort. In addition to productivity and comfort, safety remains a top priority with AUTOSTOP™ Enhanced Kickback Control, which reduces over-rotation and provides added user protection. For improved visibility in low-light conditions, shadowless lighting ensures a clear view of the work area, while the integrated hang hook offers convenient storage, keeping the solution within reach at all times.



For more information, visit [www.milwaukeetool.com](http://www.milwaukeetool.com)



RefrigiWear® Helps Workers Gear Up for Unpredictable Spring Weather

*Durable, waterproof, high-visibility workwear now in stock.*

Working outside is never a walk in the park. When spring weather turns from snow to rain and temperatures bounce between hot and cold, it gets even worse. That's why contractors, landscapers, and trade professionals turn to RefrigiWear for durable, waterproof workwear to keep them safe, comfortable and dry through unpredictable spring weather.

Best known for inventing the original minus-50 freezer suit in 1954, RefrigiWear offers the world's largest selection of insulated and weather-ready personal protective equipment (PPE) for people working in the extreme cold of ice cream freezers, refrigerated food processing facilities, and subzero cold storage warehouses.

"People who work outdoors in unpredictable and uncomfortable conditions are now discovering what their cold chain counterparts have known for more than 70 years: that RefrigiWear workwear, boots, and gloves are the most durable, comfortable and weather-ready gear you can get," says Leigh Stadelmeier, Authorized OSHA Outreach Trainer and Vice President of Outdoor Sales at RefrigiWear.

Lightweight, waterproof PPE is a must-have for people working outdoors in the spring, explains Stadelmeier.

RefrigiWear products such as the 3-in1 Rainwear Jacket, available in black or high-visibility lime, deliver flexible, all-day, all-weather protection. The heavy-duty outer shell is waterproof, and the hood rolls handily into the collar when not in use. When the weather turns cool, zip in the inner quilted jacket for extra warmth, comfort, and protection. That's not the only RefrigiWear gear that pulls double-duty this spring.

The HiVis Reversible Softshell Vest easily works a split shift with a high-visibility side for on-the-job safety and a reversible solid black side for off-the-clock style. The high-visibility side is available in orange or lime and includes silver reflective tape to meet both ANSI/ISEA 107-2020 - Type R, Class 2 and CSA Z96 - Class 2, Level 2 standards.

For more information, visit [www.pro.refrigiwear.com](http://www.pro.refrigiwear.com)

In stock in Everett, WA

Large Inventory

**SILTEC®**

**Stainless Steel Cable Trays**



[www.siltec.us](http://www.siltec.us)

For more information:

(+1) 425.328.1006

[siltec@siltec.us](mailto:siltec@siltec.us)

6101 23rd Dr. W Suite B, Everett, WA 98203






ADVERTISER INDEX

This advertiser index is compiled as a courtesy to our readers. While every effort is made to provide a complete and accurate listing of companies and page numbers, the publisher is not responsible for errors. **Click the company name or page number to see their advertisement.**

Company	PG#	Company	PG#
APPLETON / EMERSON	13	MILLER SAFETY CONSULTANTS LTD	11
APPLETON / EMERSON	15	RANDL INDUSTRIES	23
CONDUIT REPAIR SYSTEMS	4	SILTEC USA, INC	31
ELECTRI-FLEX COMPANY	29	SP PRODUCTS INC	1
iTOOLco	IFC	SP PRODUCTS INC	19
iTOOLco	21	SP PRODUCTS INC	26, 27
iTOOLco	IBC	SP PRODUCTS INC	BC
KRENZ & COMPANY	32	UNDERGROUND DEVICES	5
LIGHTFAIR 2025	3	UNDERGROUND DEVICES	17
MILLER SAFETY CONSULTANTS LTD	7		

When it comes to transformer cooling fans, Krenz-Vent is the industry recognized gold standard. Our leadership position is earned through 80+ years of R&D plus our superior engineering and customer service. You can rest easy when you specify Krenz fans.

**ENGINEERED TO COOL**  
There is no comparison.



**KRENZ & COMPANY, INC.**

KRENZVENT.COM • 262.255.2310 • KRENZ@KRENZVENT.COM

ALL THE INFORMATION YOU NEED IS JUST A CLICK AWAY AT **WWW.EPSMAG.NET**

**Electrical Products & Solutions**

Transition Couplings  
PVC Bell End Adapter  
Galvanized Rigid Conduit - 1/2" thru 6"

HOME ARTICLES NEWS VIDEO PRODUCTS SUBSCRIBE CONTACT

Warming Up to Electrical Heating Cables

WHAT'S NEW

Conduit Repair Systems, Inc.  
The World Leader in Split Conduit Products

EPS Magazine in Your Inbox

DMF Lighting Expands its M Series Commercial Collection with High Lumen Packages for Hospitality and Mix-Use Spaces

New Multi-Tester from Klein Tools Combines Core Electrical Products into One Model

RPS Launches SlimWave Filter To Safeguard Motor and Cables

# CORDLESS CANNON 6K

**iTOOLco.**  
WWW.iTOOLco.com | 865.670.3713

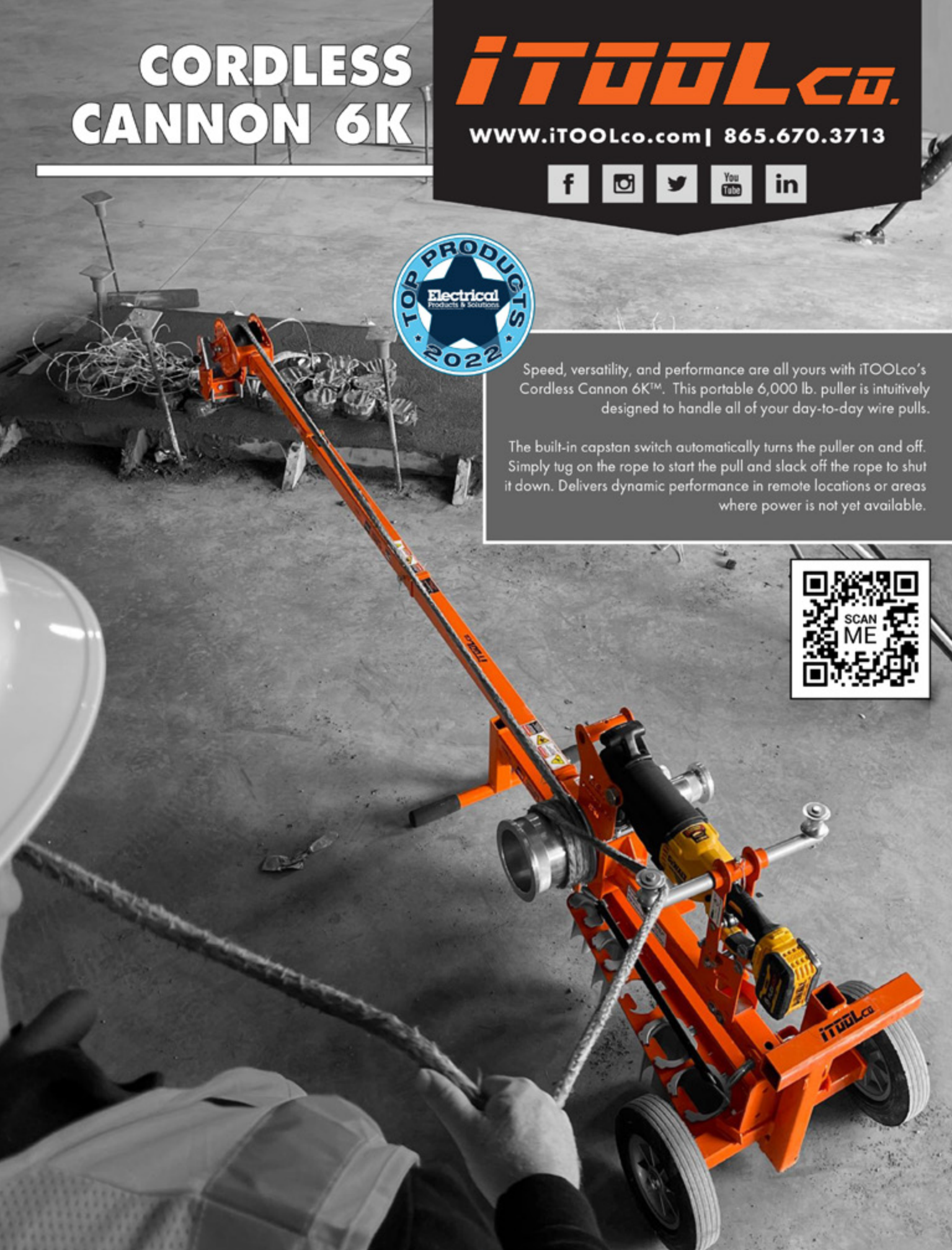
f i t y in

**TOP PRODUCTS 2022**  
Electrical Products & Solutions

Speed, versatility, and performance are all yours with iTOOLco's Cordless Cannon 6K™. This portable 6,000 lb. puller is intuitively designed to handle all of your day-to-day wire pulls.

The built-in capstan switch automatically turns the puller on and off. Simply tug on the rope to start the pull and slack off the rope to shut it down. Delivers dynamic performance in remote locations or areas where power is not yet available.

SCAN ME







# SPPRODUCTS, INC.

Productivity and value thru ideas  
**FOR SAFER BETTER FASTER JOBS**



We're Proud to be the Electricians' Friend for Over 50 Years!

**IP5**

**"The Original"**

Enter Any KO on Both Sides of the Box



**IP19/20**

4-Conduit Block  
PATENTED

**IP21a**

QwikBlock  
PATENT PENDING

Use 4-Conduit Block (IP19 or IP20) with QwikBlock (IP21a)

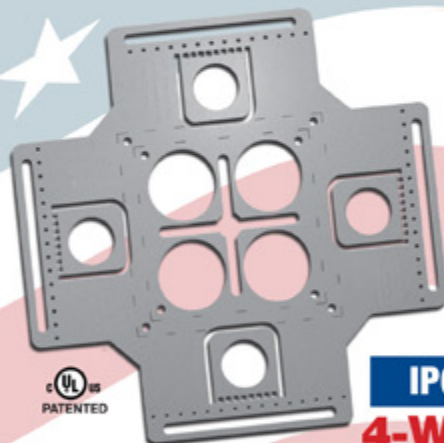
**IP6d**

**2-Way**

with Split Fingers for Horizontal or Vertical Installation



**Our Family of Conduit & Box Support Plates Saves Valuable Time & Money!**



**IP6**

**4-Way**

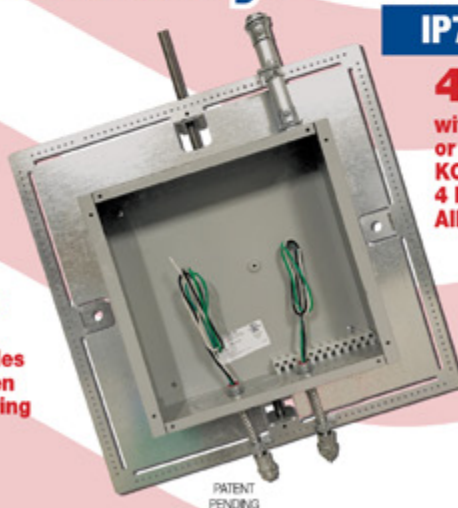
Enter Any KO on All 4 Sides of the Box Plus 4 Large Open KOs in Center Allows Entering Back of Box



**IP6a**

**2-Way/Half**

Enter Any KO on 1 or 2 Sides of the Box Plus Large Open KOs in Center Allows Entering Back of Box



**IP7**

**4-Way**

with Split Fingers for Horizontal or Vertical Installation. Enter Any KO on All 4 Sides of the Box Plus 4 Large Open KOs in Center Allows Entering Back of Box.

**IP8**

Mount Horizontally or Vertically from One Single Support

**20 x 20**

Supports up to 12 x 12 J-Box

**28 x 28**

Supports up to 20 x 20 J-Box

**MADE IN THE USA!**

Plus More Being Invented for **SAFER BETTER FASTER** Jobs . . . Call With Your Ideas!

SPProducts.com **800-233-8595** info@SPProducts.com