

JUNE 2025

# Electrical

## Products & Solutions

The Purchasing Guide for Electrical Contractors

[www.epsmag.net](http://www.epsmag.net)



**Rigid PVC Conduit vs.  
ENT in High-Rise and  
Multi-Use Applications**



# CANNON 12K

**THE TOUGHEST  
WIRE PULLER YOU'LL EVER USE!**

**EXTRA EXTENSIONS:**  
giving you up to 13' of wire from  
the conduit opening.

**SIX SPEEDS:**  
Dual capstans with 3 speeds  
on each AND reverse gear!



12,000 Lb. pulling capacity.



Dual capstans with a 3  
speed motor.



Overhead, underground  
and side pull capabilities.

*We're Proud to be the Electricians' Friend for Over 50 Years!*

**NEW  
PRODUCT!**

**IP10a**

**EZ STUB-UP**

Join two EZ Stub-Ups  
with strut to support and  
secure multiple stub-ups  
on wooden forms before  
concrete pour for sizes  
1/2", 3/4", 1" & 1-1/4"  
stub-ups with SP's Nylon  
Support Brackets and  
transition to RGB with  
our transition couplings.

**IP1**

## Qwik Duct Safer Better Faster

**IP3b  
IP3c**

**HDPE CUSTOM TEMPLATES**  
*In Any Configuration Required*



Patent  
Pending

**PVC Offset**

Sizes 1/2" thru 6"  
Meets Flexible  
Madel Test  
Requirements



Patent  
Pending

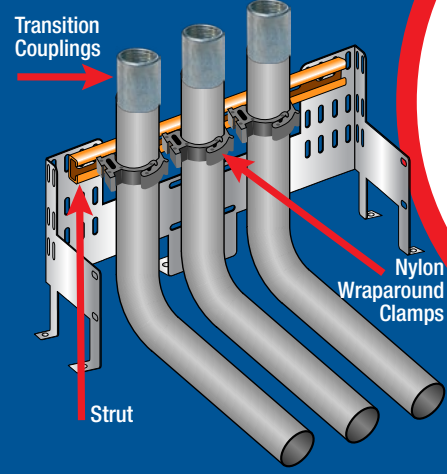
**Bore Spacers**

Sizes 1/2" thru 6"  
Roll assembled conduit  
into caissons and under  
obstructions

**IP2a**

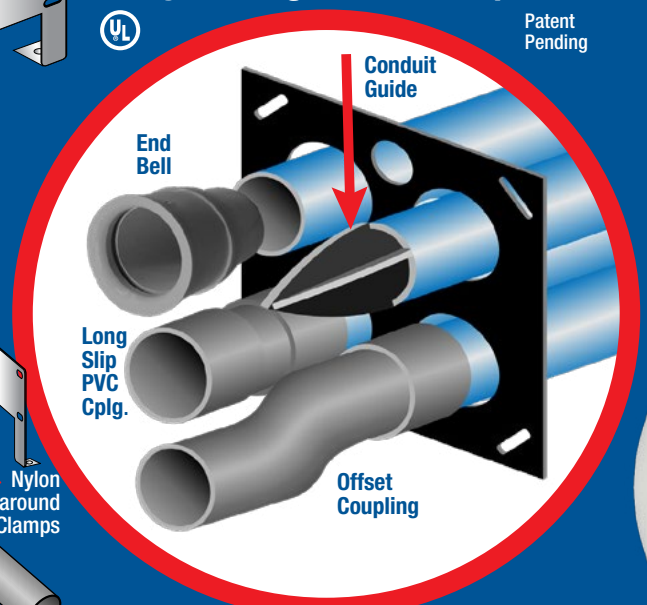


Transition  
Couplings



Strut

Long  
Slip  
PVC  
Cplg.



Conduit  
Guide

End  
Bell

Offset  
Coupling

**IP13a-p**

## Conduit Transition Couplings



**PVC schedule 40 & 80**

Patent  
Pending

*Transitions in Less Than  
5 Minutes*



**IP3a**

**End Bell  
Adapter**  
Schedule  
40/80 PVC



Patent  
Pending

PVC/Liquidtite

PVC/MC Cable

PVC/EMT

PVC/PVC

PVC/Stainless

PVC/Aluminum

Bell End/Rigid

PVC Slip/Rigid



**IP15**

**1 Piece  
Reaming Bit**  
1/2" thru 6"  
Schedule 40/80

**Save Cost on the Rigid Nipple, Tape & Labor**  
*Use for Entire Job - Not Just for Repair*

*Plus More Being Invented for SAFER BETTER FASTER Jobs . . . Call With Your Ideas!*



Electrical Products & Solutions™  
issue sponsors



COMPANY PROFILE

**6 Protect Yourself**  
Miller Safety Consultants —  
*A Leader in Arc Flash Protection*  
BY VINCENT MILLER

COVER STORY

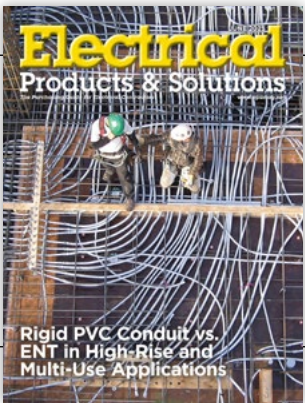
**8 Rigid PVC Conduit vs. ENT in High-Rise and Multi-Use Applications**  
BY PHIL CRANGI

DEPARTMENTS

**14** INDUSTRY NEWS  
**20** NEW PRODUCTS  
**32** AD INDEX

ON THE COVER

Photo courtesy of IPEX



Electrical  
Products & Solutions™  
The Purchasing Guide for Electrical Contractors www.epsmag.net

PUBLISHER  
Danny J. Salchert

OFFICE MANAGER  
Anita Salchert

CREATIVE DIRECTOR  
Derek Gaylard

CIRCULATION DIRECTOR  
Pam Fulmer

CONTRIBUTING WRITERS  
Vincent Miller  
Phil Crangi



Danny J. Salchert

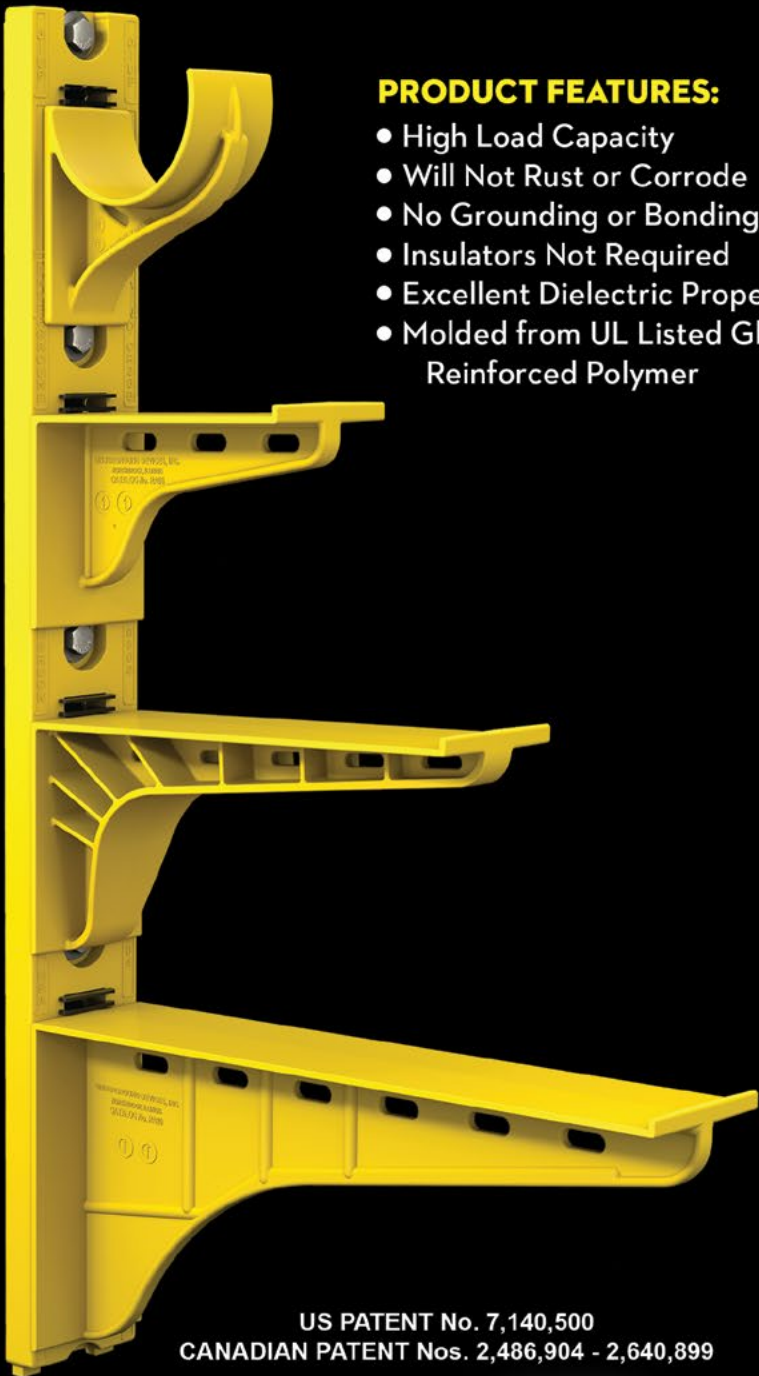
EXECUTIVE AND  
ADVERTISING OFFICES  
2009 Eagle Ridge Drive  
Birmingham, AL 35242  
**phone:** 205.981.4541  
[www.epsmag.net](http://www.epsmag.net)  
[danny@epsmag.net](mailto:danny@epsmag.net)

*Electrical Products & Solutions™* is published twelve times a year on a monthly basis by ABD Communications, Inc., 3591 Cahaba Beach Road, Birmingham, Alabama, 35242, USA. *Electrical Products & Solutions™* is distributed free to qualified subscribers. Non-qualified subscription rates are \$57.00 per year in the U.S. and Canada and \$84.00 per year for foreign subscribers (surface mail). U.S. Postage paid at Birmingham, Alabama and additional mailing offices. *Electrical Products & Solutions™* is distributed to qualified readers in the electrical contracting industry. Publisher is not liable for all content (including editorial and illustrations provided by advertisers) of advertisements published and does not accept responsibility for any claims made against the publisher. It is the advertiser's or agency's responsibility to obtain appropriate releases on any item or individuals pictured in an advertisement. Reproduction of this magazine in whole or in part is prohibited without prior written permission from the publisher.

FOLLOW US ON



The Heavy Duty Nonmetallic  
**CABLE RACK**  
For Power and Communications Manholes And Vaults



PRODUCT FEATURES:

- High Load Capacity
- Will Not Rust or Corrode
- No Grounding or Bonding
- Insulators Not Required
- Excellent Dielectric Properties
- Molded from UL Listed Glass Reinforced Polymer



HDL Arm Lock shown with  
RA04 Arm and CR36-B Stanchion



3HDS - 3" throat saddle shown with  
a cable secured by cable ties.



RA08 - 8" arm shown with three  
cables secured by cable ties.

US PATENT No. 7,140,500  
CANADIAN PATENT Nos. 2,486,904 - 2,640,899

**UNDERGROUND DEVICES**  
INCORPORATED



420 ACADEMY DRIVE  
NORTHBROOK, IL 60062  
Phone: 847-205-9000 • Fax: 847-205-9004  
Website: [www.udevices.com](http://www.udevices.com)

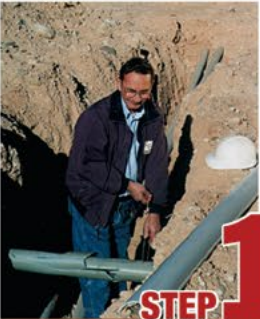


# REPAIR CONDUIT IN A SNAP!

No Tape • No Plastic Straps • No Metallic Straps

## NO KIDDING!

*Designed especially for power, communications and fiber optics.*



Remove damaged conduit



Cut split duct conduit to fit



Snap in place

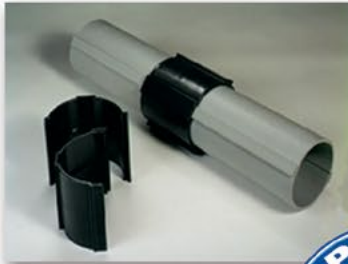
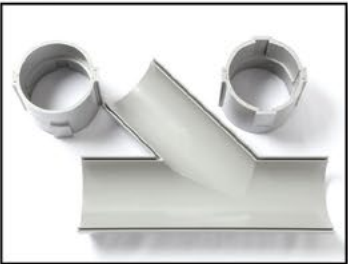
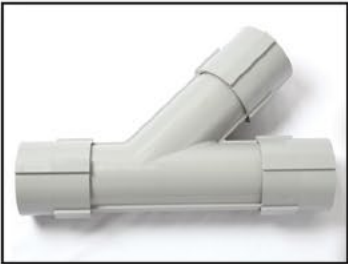


Attach adapters



Finish job in record time

*“The World Leader In Split Conduit Products”*



**Conduit Repair Systems, Inc.**  
The World Leader In Split Conduit Products



800.670.1804 • 435.673.8724 fax • crs@conduitrepair.com • www.conduitrepair.com

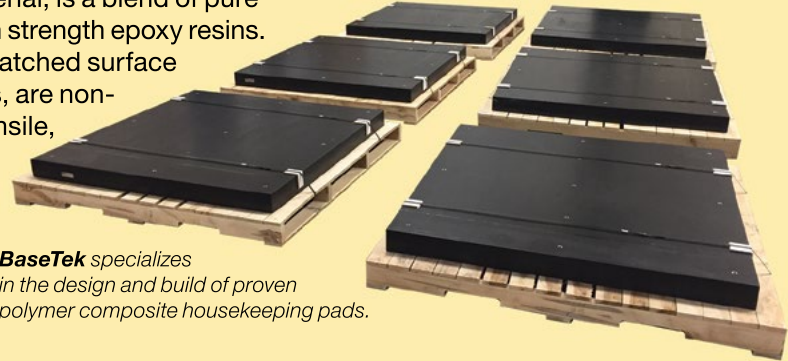
# Made to order polymer composite HOUSEKEEPING PADS

**BASETEK**

**ZANITE PLUS** POLYMER COMPOSITE  
A base you can build on.

**Zanite® Plus**, a proprietary polymer concrete material, is a blend of pure silicon dioxide, ceramic quartz aggregate, and high strength epoxy resins. **BaseTek Housekeeping Pads** deliver a solid, unmatched surface flatness and provide increased physical properties, are non-conductive, corrosion resistant and offer higher tensile, flexural and compression strength than concrete or vinyl esters. And in addition, eliminates the time associated with forming, pouring, and proper curing of conventional concrete.

*BaseTek, consistently supplying customers with the highest quality part, at the lowest possible cost.*



*BaseTek specializes in the design and build of proven polymer composite housekeeping pads.*



**Why  
Zanite Plus  
is Better**

COMPRESSIVE STRENGTH	✓	18,000 PSI
CORROSION RESISTANCE	✓	EXCELLENT
DEFLECTION	✓	RIGID — WILL NOT BEND
VIBRATION DAMPING	✓	HIGHEST
INSTALLED COST	✓	LOWEST

*Available options— custom cut-outs, stainless threaded inserts, counterbore anchoring, and bottom access.*



**GIVE US A CALL  
877.712.2273**

**Outperforms** traditional concrete  
**Quick Installation** no waiting for concrete to cure  
**Labor Saving** no forms or need to pour field materials  
**Mounting** stainless steel inserts for equipment and floor anchors

**Flexible Designs** built to precise size specifications including conduit openings  
**Built to Last** corrosion resistant and extremely durable (seismic ready)  
**Precast** with limited colors available

For more visit [basetek.com](http://basetek.com) or [info@basetek.com](mailto:info@basetek.com)



**Built to last and outperform. We guarantee it.**

©2025 BaseTek, LLC.,

Zanite Plus is a registered trademark of BaseTek LLC.



# Protect Yourself

## Miller Safety Consultants — A Leader in Arc Flash Protection

Vince Miller started Miller Safety Consultants, a veteran owned business in 1999. The goal of the business was to provide cost effective safety consulting, employee training such as: confined space entry, fall protection, electrical safety and provide sales of electrical shock and flash protective equipment and fall protection equipment to businesses in the Washington DC area.

Reliance Industries provided fall protection products and much of the sales and training was on behalf of the supplier. In 2000, the owner decided to retire from his business, and Vince decided to discontinue the fall protection line of his business and concentrate more in the electrical training and products.

Vince had been a distributor for Certified Insulated Products (CIP), a manufacturer of electrical insulated tools and electrical arc flash clothing manufactured by Otex in Rochester, New York. As a distributor, Vince provided sales through his internet website and much through relationships with electrical contractors. His training was a classroom environment and was provided directly to customers but he also taught as a sub-contractor for other safety consulting companies and the

Chesapeake Safety Council in Baltimore, Maryland. In 2005, Vince partnered with Vivid Learning Systems in Cascades, Washington to provide on-line training in safe work practices.

Training in electrical safe work practices is still provided locally in the Washington DC area and as a partner with an electrical engineering firm and online. The training is based on the Occupational Health and Safety Administration (OSHA) standards and the National Fire Protection Association (NFPA) 70E standard.

Miller Safety Consultants is now a distributor for Cementex USA, Burlington, New Jersey, for insulated tools and equipment and clothing from OTEX Protective, Rochester, New York.

The majority of his sales of products

are from the web-based store. Cementex is nationally known for their quality equipment. Otex Protective is becoming more known for their quality clothing. For years, they have manufactured their products under other provider labels. Vince chose to not create his clothing line, but to sell the manufacturer product.

Vince has worked with many electrical company employees to fine-tune the clothing to be more comfortable for the user. Working closely with the manufacturer, they have made slight changes in how the cloth pattern was modified to meet final production. An example is the lightweight 40 Calorie vented hood offered by Otex.

The material is of the latest technology. The vented assembly is constructed for balance on the back of the hardhat and the airflow is 27 CFM to prevent fogging of the face shield and provide cooling to the worker. It took over a year to develop the product with the user prior to having the hood “flash tested”. This product is now standard issue with many electrical contractors.

Being a small business and having quality providers has resulted in satisfied customers for Miller Safety Consultants. Being a direct supplier for OTEX Protective, another small business means customized customer needs can be met. □

For more information, visit  
Miller Safety Consultants at:  
[www.electricalsafetyproducts.com](http://www.electricalsafetyproducts.com), email  
Vince at: [sales@millersafetyltd.com](mailto:sales@millersafetyltd.com).

**AUTHORIZED**  
**Cementex**  
**The Safety Tool Specialists**  
**DISTRIBUTOR**

Give Vince a call at  
**(703) 367-0404**



Deluxe Maintenance Tool Kit



Class O Glove Kit

# Protect yourself from “Arc Flash”

We offer two lightweight 40 cal rated systems for employee protection -  
PYRAD® Technology by GORE-TEX LABS, single layer and the two layer HYBRID (Protera/Indura) models.  
Our unique V-5 ventilation systems using Milwaukee’s M12 rechargeable battery  
with our patented “arc flash sensor” technology.



Both lift hoods feature 30 CFM ventilators. The arc sensor automatically disconnects the fan power to stop the air flow and maintain a safe breathing zone within the hood.



CALL US TODAY  
**(703) 367-0404**

OR VISIT OUR ONLINE ELECTRICAL SAFETY EQUIPMENT STORE  
[www.electricalsafetyproducts.com](http://www.electricalsafetyproducts.com)





# Rigid PVC Conduit vs. ENT in High-Rise and Multi-Use Applications

BY PHIL CRANGI

## CHOOSING THE RIGHT HIGH-RISE CONSTRUCTION CONDUIT

can significantly impact project efficiency and costs. While rigid PVC (Polyvinyl Chloride) conduit may have a lower upfront cost, ENT (Electrical Nonmetallic Tubing) offers more significant advantages due to its long-term labor savings and installation efficiency. ENT and fittings form an integrated system engineered to save electrical contractors time and money.





ENT's lightweight design makes handling and transportation easier, and its snap-in connection method eliminates the need for solvent cement, significantly reducing installation time. Designed to be concrete-tight, ENT is available in flexible, easy-to-transport coils and reels, allowing it to adapt seamlessly to complex layouts. In addition, it can be cut on-site using simple handheld tools.

These features enhance workflows and position ENT as the more practical and effective choice for high-rise applications, establishing a new standard in modern construction.

**1. What are Rigid PVC Conduit and ENT, and how are they used in high-rise construction?**

ENT is a flexible, lightweight conduit ideal for embedding in concrete slabs or installing in interior walls of high-rise buildings. It is known for its ease of handling and labor efficiency. In

contrast, rigid conduit is a stiff, heavy conduit with solvent-glued joints commonly used for underground and large-diameter applications.

**2. What makes ENT a better choice for high-rise applications?**

ENT offers several advantages over rigid PVC conduit:

- **Ease of transportation:** ENT is approximately 50% lighter than rigid PVC conduit and is available in up to 1,500-foot-long reels, reducing transportation and handling challenges and waste.
- **Simplified installation:** ENT's flexibility eliminates the need for pre-made bends, glue, or additional fittings like elbows, couplings, and adapters. Having fewer connections to make significantly reduces labor-intensive tasks.
- **Labor savings:** ENT can reduce labor costs and installation times by up to 50%, making it a valuable

choice for time-sensitive projects with weekly concrete pours.

- **Concrete tight:** Designed for embedding in concrete, ENT is durable and is not prone to cracking.

**3. How does the cost of ENT compare to Rigid Conduit?**

While the material cost of rigid conduit is 25–35% less, ENT compensates with significant labor savings, as noted above. These savings are especially impactful on labor-intensive, high-rise construction projects. Contractors often find ENT more cost-effective for structures over five stories because the cumulative labor savings will outweigh material costs.

**4. Are there specific use cases where ENT is preferred over Rigid PVC?**

ENT is recommended for:

- high-rise buildings exceeding five stories, particularly for embedding in concrete slabs;

**AUTHORIZED  
DISTRIBUTOR OF**

***Cementex***

***The Safety Tool Specialists***



**Deluxe Geared Maintenance Tool Kit**

**Cementex Double-insulated Tools:**

- Comply with the IEC 900 standard
- Comply with ASTM F1505-01 standard
- Help you meet requirements of OSHA Safety Related Work Practices, NFPA 70E Standard and CSA-Z462

**Cementex Double-insulated Tools are:**

- Tested to 10,000 VAC and rated for 1,000 VAC when working on live parts
- Manufactured in the USA with domestic and global materials.
- Marked with the international safety symbol – (double triangle) 1000V

**Class 00 Arc Flash Glove Kit**

Class 00 arc flash glove kit from Cementex is a good option for a reliable kit for work with 500 Volts or less. The gloves are made of natural rubber construction, offering the required dielectric properties combined with flexibility, strength, and durability. Gloves feature rolled cuffs, and are anatomically shaped thereby reducing hand fatigue. Each glove is chlorinated for maximum comfort.

**Components of Cementex ICK00-11 glove kit:**

- 11" long Class 00 rubber insulating gloves
- Leather protectors
- Canvas storage bag



CALL US TODAY

**(703) 367-0404**

OR VISIT OUR ONLINE ELECTRICAL SAFETY EQUIPMENT STORE  
[www.electricalsafetyequipment.com](http://www.electricalsafetyequipment.com)





- parking decks where concealed conduits enhance visual appeal;
- coastal constructions that require hurricane-proof concrete slabs;
- residential applications for future-proofing walls with flexible wiring options.

**5. What are the durability and environmental considerations for ENT?**

Both ENT and rigid conduit meet UL standards for thermal and moisture resistance. When embedded in concrete, ENT’s durability matches PVC. However, ENT cannot be used for direct burial or in areas exposed to ultraviolet light. However, ENT uses less raw material, making it a more sustainable

choice for concrete applications.

**6. What challenges do contractors face when adopting ENT?**

Their main challenges typically involve a lack of familiarity with ENT and misunderstandings about lower-quality, alternative products. However, we’ve seen that providing education and sharing testimonials from electrical contractors who have successfully switched to ENT can help overcome these concerns.

**7. Why should contractors and engineers choose ENT for their next high-rise project?**

ENT offers significant labor savings

and straightforward installation, backed by over 25 years of reliable performance. Its complete system includes advanced locking mechanisms designed for long-lasting durability.

For contractors who value efficiency and quality, choosing ENT is a practical decision that meets the needs of modern construction projects. □

**About the author:**

*Phil Crangi is a regional sales manager for IPEX in the United States, based in Tampa, Florida. A native of Pittsburgh, Pennsylvania, Crangi is a 42-year veteran of the electrical industry, having worked at IPEX for the past 13 years. He can be reached via email at phil.crangi@ipexamerica.com.*



Appleton™ IJL LED Series Luminaires

**Versatile and Adaptable Illumination for Any Environment**

Appleton™ IJL LED Luminaires by Emerson are the premier jelly jar LED luminaires for industrial locations that offer versatile and adaptable illumination. With user selectable technology, they allow users to choose from a range of correlated color temperatures (CCT) and/or lumen outputs. Our engineers have developed specially designed optics that provide optimal light distribution – including uplight. The IJL LED Luminaires offer multiple mounting options such as wall, ceiling, and pendant, with an adjustable arm that allows precise rotation in 10° increments from 0° to 90°.

Learn More at: [www.masteringled.com](http://www.masteringled.com)





# From One to One Million: Emerson’s Appleton™ Hits LED Lighting Milestone in Hazardous and Industrial Markets

*Reaching One Million in LED Sales Highlights Appleton’s Commitment to World-class Technological Innovation and Energy Efficiency*



Appleton™, an Emerson brand and a pioneer in industrial lighting solutions, proudly announces the shipment of its one millionth LED luminaire, a significant milestone that underscores the company’s enduring commitment to innovation, quality, and energy efficiency in the hazardous location and heavy industrial markets.

Since launching its first LED product series in 2010, Appleton has continuously evolved to meet the rigorous demands of industrial environments. Today, Appleton offers a portfolio of over 40 LED product series, each engineered for durability, performance, and reliability in the most challenging conditions — from offshore oil rigs to chemical processing plants and mining operations.

“This milestone is more than just a number,” said Jami Thorton, Manager of Lighting Product Marketing for Appleton. “It represents the trust our customers place in us, the dedication of

our engineering teams, and our steadfast vision of delivering rugged, efficient lighting that improves safety, reduces energy use, and stands the test of time.”

By transitioning from traditional HID and fluorescent lighting to advanced LED systems, Appleton customers have collectively saved an estimated 600 gigawatt-hours (GWh) of energy — enough to power over 55,000 homes for a year. Energy savings not only lower operating costs but also significantly reduce carbon emissions, supporting sustainability goals across industries.

A key driver of Appleton’s success has been its proactive embrace of smart and connected lighting solutions. With integrated controls, remote monitoring, and real-time diagnostics, these intelligent systems enable customers to optimize lighting performance, enhance operational safety, and streamline maintenance — delivering both immediate and long-term value.

Given the industrial sector accounts for 33% of global energy

consumption (U.S. Energy Information Administration) and a typical industrial plant is spending 30% to 50% of its operating budget on energy (International Energy Agency), it is critical to focus on industrial energy efficiency to minimize energy loss. Emerson data shows industrial companies can significantly reduce site energy usage by using energy management technologies such as connected LED lighting that provide better energy measurement, monitoring, targeting and reporting. Appleton LED retrofits and smart lighting systems can cut lighting energy costs by 50-70%.

With over a century of experience in industrial lighting and a proven legacy of innovation, Appleton remains at the forefront of the industry. The shipment of the 1 millionth LED luminaire is a testament to the company’s role as a trusted partner to industrial customers worldwide.

Learn more at [www.appleton.emerson.com/en-us/appleton](http://www.appleton.emerson.com/en-us/appleton). □



IWL LED Series Luminaires

## Wall Pack LED Lighting for Industrial Facilities

The Appleton™ IWL LED Series Luminaires by Emerson are designed to provide safe illumination at outdoor entrance doors and along the exterior of commercial and industrial facilities. Three models — each with three field selectable wattages (lumen outputs) and three field selectable color temperatures — ensure the perfect configuration for your unique application requirements. Improve employee safety and security with the IWL’s bright, cost-efficient illumination.

[Learn More at: www.masteringled.com](http://www.masteringled.com)

### ABOUT EMERSON

Emerson (NYSE: EMR) is a global technology and software company providing innovative solutions for the world’s essential industries. Through its leading automation portfolio, including its majority stake in AspenTech, Emerson helps hybrid, process and discrete manufacturers optimize operations, protect personnel, reduce emissions and achieve their sustainability goals. For more information, visit [www.Emerson.com](http://www.Emerson.com).



APPLETON™

The Emerson logo is a trademark and a service mark of Emerson Electric Co. © 2024 Emerson Electric Co.





Robroy Industries Promotes Wendy Swain-Owens to Director of Human Capital Management

Robroy Industries is pleased to announce the promotion of Wendy Swain-Owens to Director of Human Capital Management, expanding her previous role as Director of Organizational Development. This change reflects both Wendy’s proven capabilities and exceptional leadership, as well as the strategic importance of human capital to the company’s long-term growth and operational strength.

Since joining Robroy Industries in August 2021, Wendy has made a significant impact by introducing foundational organizational development



frameworks, enhancing leadership development programs, and strengthening talent management processes across the enterprise. In her expanded role, she will continue to lead initiatives that align workforce capabilities and development with Robroy’s strategic objectives, while fostering a culture of engagement and continuous improvement.

“Wendy’s implementation of human capital strategies has already made a significant impact at Robroy,” said Steve Voelzke, Chief Operating Officer of Robroy Industries. “Her expanded

role will ensure we continue building the leadership capabilities, enterprise consistency, and organizational strength needed to support our ambitious growth plans.”

Wendy brings more than 30 years of human resources leadership experience, including executive roles in the oil and gas sector. Her knowledge base spans organizational development and change management, leadership training and talent development, strategic workforce planning, employee engagement and culture building, as well as succession planning and performance optimization. Her well-rounded background has enabled her to build robust human capital strategies that support enterprise consistency and growth, and as Director of Human Capital Management, Wendy will use her talents in these areas to position the company for enduring success. □

Robroy Industries Welcomes Doug Weight as Business Development Manager

Robroy Industries is pleased to announce the hiring of Doug Weight as the newest Business Development Manager in the Raceway division. With an extensive background in sales, market development, and strategic planning, Doug brings a wealth of experience that will help drive growth and expand market opportunities for Robroy’s industry-leading product lines.

In his new role, Doug will be responsible for executing targeted sales strategies across multiple channels, including OEMs, system integrators, distributors, contractors, and end-users. He will focus on increasing market



share, optimizing sales performance, and driving demand creation through strategic initiatives. Additionally, he will support the company’s marketing efforts, providing valuable market intelligence and ensuring full alignment between sales and business objectives.

Doug joins Robroy with a proven track record of success. Most recently, he served as a Regional Specification Manager, where he led efforts to convert engineering specifications, conducted technical product presentations, and spearheaded distributor training programs. His background also includes positions in

sales leadership, where he achieved significant sales growth, managed distribution networks, and successfully increased revenue year-over-year.

“Doug is joining the Robroy family at a pivotal moment in our company’s century-long history,” said National Sales Manager Mike Overstreet. “His deep industry knowledge, customer-focused approach, and ability to identify and develop new business opportunities make him a perfect fit as we continue to drive our business forward and lead the way in offering high-quality, innovative, purposeful solutions.”

Doug’s hands-on sales expertise, combined with his leadership skills, technical proficiency, and ability to foster long-term customer relationships, will be instrumental in enhancing Robroy’s presence and exceptional reputation in key markets. Please join us in welcoming Doug Weight to the Robroy team! □

ABOUT ROBROY

Founded in 1905, Robroy Industries has been a trusted leader in the electrical products market for over a century. We specialize in manufacturing high-quality products with unmatched performance, including PVC-coated and stainless steel conduit and fittings, sanitary support systems, non-metallic enclosures, galvanized elbows, couplings, nipples, and the original Korn’s clamps. Our commitment to excellence is built on core values of achievement, balance, appreciation, and trust, and our fourth-generation family ownership makes us truly one of a kind. Our brands—Plasti-Bond, Perma-Cote, Stahlin, AttaBox, Robroy Stainless, Rocket Rack, and ECN/Korn’s—are recognized for their innovation and reliability in serving diverse industries. With a proven past and a vibrant outlook, Robroy Industries continues to lead the way in delivering superior electrical products and solutions. For more information, visit [www.robroy.com](http://www.robroy.com).



THE SECRET TO  
UNDERGROUND  
POWER  
TRANSMISSION



OUR WUNPEECE TRANSMISSION SPACERS REDEFINE THE INDUSTRY STANDARD FOR UNDERGROUND POWER TRANSMISSION INSTALLATIONS. WITH PRECISION ENGINEERING AND UNMATCHED QUALITY,

JOIN THE RANKS OF INDUSTRY LEADERS WHO TRUST UNDERGROUND DEVICES FOR THEIR POWER TRANSMISSION NEEDS.



VISIT [WWW.UDEVICES.COM](http://WWW.UDEVICES.COM)

AND EXPERIENCE THE FUTURE OF UNDERGROUND POWER INSTALLATION



# Prysmian invests \$500 million to support growing electrification demand and U.S. power grids through Encore Wire Expansion

- Groundbreaking ceremony for 650,000+ Square Foot Facility in McKinney, Texas
- Up to 120 new jobs to be created
- Encore Wire site central to Prysmian’s evolution from cable manufacturer to solutions provider in the U.S.

Prysmian yesterday held a groundbreaking ceremony to kick off its \$500 million investment at the Encore Wire campus over five years. Included in the figure is the \$249 million Prysmian Board of Director’s approved during the Capital Market Day event in March. This groundbreaking marks a significant advancement for the company, nearly a year after Prysmian’s acquisition of Encore Wire to serve electrical customers in North America through Encore’s outstanding service model.

The Encore Campus and its unique business model are essential as part of Prysmian’s evolution from a cable manufacturer to a solutions provider, serving customers with the quality and speed that is essential to unlock major energy priorities, ranging from data centers, the U.S. industry, and the strengthening of our power grid.

The project centers around a state-of-the-art medium voltage cable production facility totaling more than 650,000 square feet. Expected online in 2027, the plant will significantly increase Prysmian’s medium voltage capacity and add 120 new jobs.

“This new plant will be one of the largest standalone facilities on our campus, which is the largest vertically integrated cable factory on the planet



and is a major milestone in the Prysmian/Encore Wire growth,” said Andrea Pirondini, Prysmian North America CEO.

Encore Wire started in 1989 with a 68,000 square foot industrial warehouse building in McKinney. Over the past 35 years, Encore has grown to over 3.5 million square feet across 460 acres. The new investment reinforces Prysmian’s commitment to the City of McKinney and the region, while strengthening Prysmian’s portfolio of U.S. manufactured products.

In addition to Prysmian leaders, U. S. Representative Keith Self’s District Director Michelle Bishop presented a Congressional certificate to Pirondini marking the importance of this investment. Governor Greg Abbott also issued a proclamation commemorating the groundbreaking. McKinney’s new Mayor Bill Cox joined other local leaders for the ceremony, including the Michael Kowski from McKinney Economic Development Corporation (MEDC).

“Building on Encore Wire’s successes, Prysmian’s investment in McKinney will be significant to this community in so many different ways,” said Michael Kowski, MEDC President & CEO. “We’re proud to help bring new opportunities to our citizens and continue to showcase McKinney as fertile ground for business growth and expansion.”

“I’m honored that my first groundbreaking as mayor is for a project as big and as important as what we see here today from Prysmian,” said Mayor Bill Cox. “We thank Andrea and the Prysmian team for their investment in McKinney and look forward to further growth in the years to come.”

Guests also signed a commemorative beam that will be placed in a prominent location in the new facility. The medium voltage plant is the first phase of Prysmian’s investments in McKinney. To learn more on the vertically integrated campus, visit Encore Wire’s website. □

## ABOUT PRYSMIAN NORTH AMERICA

Based in Highland Heights, Ky., Prysmian North America is a benchmark player in the energy transition and digital transformation. Prysmian’s strategy is perfectly aligned with the main market drivers by developing resilient, high-performing, sustainable, and innovative cable systems for the transmission, power grid, electricity and digital solutions segments. Prysmian’s North American operations include 29 plant locations and nearly 8,000 associates with net sales of \$8 billion. Additional information is available at [www.na.prysmian.com](http://www.na.prysmian.com). Globally, Prysmian is the largest cable solutions provider in the world, with more than 33,000 employees, 107 production plants and 27 R&D centers in over 50 countries. In 2024, global sales exceeded €17 billion.



We’re Proud to be the Electricians’ Friend for Over 50 Years!

**IP19**

**4-Conduit Block**

Vertical support from only one 1/4", 3/8" or 1/2" threaded or threadless rods 1/4" or 3/8" threaded holes on the side along with slots for hex head bolts for hardware are provided for conduit support.

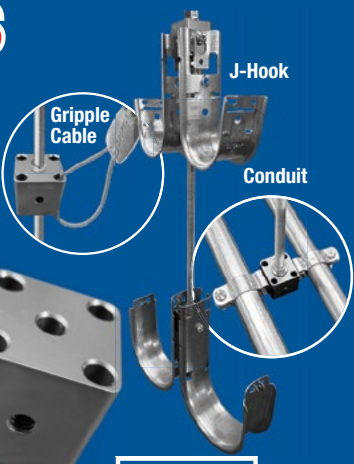
**IP21a**

**QwikBlock**

Vertical support from only one 1/4", 3/8" or 1/2" threaded rod by attaching two machine screws 1/4" x 20 thru the existing holes in back of the box. Eliminates knocking out center KO on box and traditional nut and washer method to support a single box.

# New Products

## Safer Better Faster



**IP20a**

**Box Support Rod Cubes**

Vertical support from only one 1/4" or 3/8" threaded or threadless rod with 4 holes for Gripple applications as well as 4 threaded 1/4" or 3/8" holes for conduit support hardware.

**IP3e**

**PVC Guide**

**IP2b**

**PVC Driver**

**TE15**

**Conduit Layout Tool**

**IP3g**

**Long Slip PVC**

**IP3f**

**Slip PVC/RGD**

**IP4**

**EZ Raised Bracket**

**For more information visit our website at [SPProducts.com](http://SPProducts.com)**

*Plus More Being Invented for SAFER BETTER FASTER Jobs . . . Call With Your Ideas!*



NEWPRODUCTS



**New Product Introduction: AMP® SECURE™ Low Profile LED Wall Pack**

The AMP® SECURE™ Low Profile Wall Pack offers a sleek, slimmed-down approach to traditional wall pack lighting, combining advanced lighting technology with robust construction, and industry-leading built-in standard features – all at an unmatched price.

Featuring the industry's lowest profile housing (9" W x 13" L x 5.43" D) with the widest lumen range from a single luminaire, the AMP SECURE Wall Pack's modern design includes an integrated selectable lumen output switch (4100, 6500, 9000 or 11500 lumens) and color temperature switch (3000K, 4000K or 5000K) for convenient onsite adjustments.

Ideal for commercial applications including schools, docks, shopping malls, hotels, offices buildings and other outdoor spaces, the deeply configurable luminaire is mountable from 10- to 30-feet and features an integrated photocell for automatic dusk-to-dawn operation and 0-10 volt dimming as standard features, as well as built-in 4kV surge protection and universal 120-277 voltage.

The IP66-rated die-cast aluminum housing with a corrosion-resistant, marine-grade finish ensures durability, while the UV and impact-resistant polycarbonate lens provides uniform light distribution, reducing glare and pixelation. Premium optics deliver wide light distribution and heat-dissipating fins optimizing thermal management, enhancing LED performance and extending the lifespan.

Designed for efficient, single-person installation, contractor-friendly features include a universal mounting bracket with a built-in bubble level, Philips head screws, easy-install mounting plate and integrated security tether, which frees hands for wiring.

For more information, visit [www.amplighting.com](http://www.amplighting.com)



**Motorized Operators by Bison® Help Switchgear OEMs Enhance Electrical Grid Reliability and Safety**

Bison®, a leader in air-moving and power transmission technologies, highlights its advanced motorized operator solutions engineered to elevate the reliability, safety, and efficiency of manufacturers' switchgear systems. Bison Gear Motors are crucial components within the electrical grid, ensuring the safe and dependable operation of electric utility transmission and distribution systems.

To thrive in today's marketplace, motor-operated switchgear OEMs must develop systems that provide:

- Fast, Precise Control: Offering quick and accurate control of electrical circuits.
- Remote Operation: Enabling centralized control to reduce operational costs and ensure safety.

• Smooth, Rapid Switching: Minimizing power disruptions and maximizing efficiency.

• Automation: Reducing manual operation and human error to enhance grid reliability and safety.

Bison equips OEMs with the gear-motor technology, customized designs and integration and technical support to build these sophisticated systems, ensuring they have the competitive edge to succeed.

- Robust Gearing: Designed for durability and performance, Bison motors feature rugged gearing that ensures long-lasting operation in the most demanding environments.
- Small Footprint: Bison's gear motors are engineered for compactness, making them ideal for installations where space is limited.
- Low Amp Draw & High Torque Output: These motors are optimized for energy efficiency, drawing minimal amperage while delivering high torque for powerful and reliable operation.
- Smooth, Quiet Operation to -40°F: Bison motors deliver smooth and quiet performance even in extremely cold temperatures, ensuring reliable operation in harsh environments.
- 99.99% Tested & Proven Uptime: The gear motors are rigorously tested to guarantee outstanding reliability, with proven uptime performance of 99.99%.
- Integration & Technical Support: Bison has played a key role in helping customers optimize their systems. Assistance has been provided in adapting travel limits, integrating a position sensing circuit, and designing a hermetically sealed stainless-steel housing suitable for underwater use.
- Beyond Fit, Form, and Function: Bison stays ahead of industry changes and partners with OEMs to navigate new regulations and requirements.

For more information, visit [www.bisonametek.com](http://www.bisonametek.com)



CANNON iK

ELIMINATE HAND PULLS & INCREASE JOBSITE EFFICIENCIES.





Leviton Releases New Decora Smart Wi-Fi 0-10V Dimmer for Home and Small Business Lighting Control

Leviton recently announced the launch of the Decora Smart Wi-Fi 0-10V Dimmer (D2710), expanding its comprehensive Wi-Fi lighting and load control solutions that work with the My Leviton app. As the first Matter-compatible 0-10V smart dimmer, the new 120V/277V device makes it easy to add 0-10V dimming to smart platforms such as Apple Home, Amazon Alexa, Google Home and Samsung SmartThings.

The new dimmer adds smart control to 0-10V dimmable LED drivers and electronic fluorescent ballasts to set light levels in residential spaces such as garages, basements and kitchens or to adjust lighting in small business applications like restaurants or doctor's offices.

"Following the success of our Decora Smart ELV/LED Dimmer, the new Decora Smart Wi-Fi 0-10V Dimmer reinforces Leviton's position as a leader in dimming technology, delivering on performance and reliability," said James Shurte, Director of Product Management, Residential at Leviton. "This device complements our award-winning Decora Smart lighting offering which allows customers to control a wide variety of lighting fixtures and bulbs via multiple dimming solutions with our My Leviton app."

The dimmer features an adjustable soft fade, and installers can select between 0-10V linear or logarithmic dimming modes. The dimming range can be adjusted using the dimmer buttons or the My Leviton app, making it easy for the installer to optimize performance, and the rocker can be double tapped to quickly turn on at maximum brightness or turn off at zero percent illumination.

Using the My Leviton app, users can personalize lighting scenes and settings with preset light level options. For example, users can program the dimmer to always turn on at a selected level or set the dimmer to randomly turn off and on lights, giving them peace of mind while away. An optional auto-shutoff feature can also turn lights off after a preset time, allowing for energy savings.

Users can change the color of 0-10V Dimmer device at any time with a simple snap-on color change kit available in six color options. For three-way and multi-location dimming, the 0-10V dimmer can pair with Leviton Companion devices, including the DD00R Wired Dimmer Companion and the DAWDC wire-free Anywhere Dimmer Companion.



For more information, visit [www.leviton.com](http://www.leviton.com)

Cementex Highlights Double-Insulated Reset Tool for Safe and Efficient Equipment Maintenance

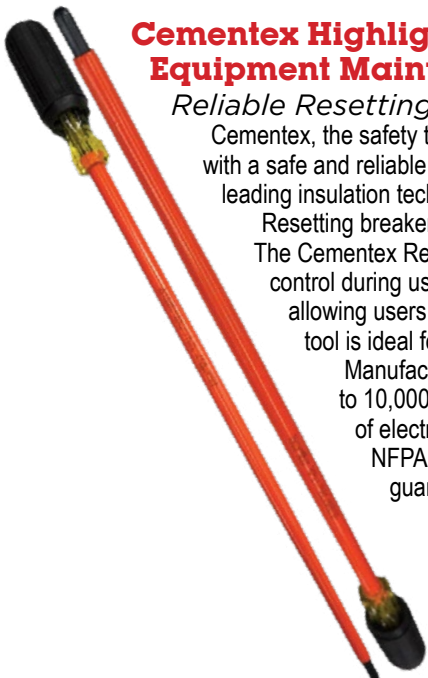
*Reliable Resetting with Enhanced Protection for Electrical Professionals*

Cementex, the safety tool specialists, highlights its double-insulated Reset Tool, designed to provide electrical professionals with a safe and reliable solution for resetting equipment in energized environments. Engineered with Cementex's industry-leading insulation technology, this tool helps workers maintain compliance while reducing the risk of electrical exposure.

Resetting breakers, relays, and other electrical components requires a tool that ensures both efficiency and protection. The Cementex Reset Tool is a 15" Button Reset Tool with a round tip and cushion grip handle, providing comfort and control during use. It features double insulation with an orange-over-yellow design for clear visual safety indication, allowing users to detect wear and maintain a safe working environment. With a slim and controllable form factor, this tool is ideal for precision work in tight spaces, ensuring ease of use without compromising safety.

Manufactured in the U.S.A. with both U.S. and globally sourced materials, the Cementex Reset Tool is tested to 10,000 volts and rated for live use up to 1,000 VAC / 1,500 VDC. Designed to meet the rigorous demands of electrical maintenance, this tool helps professionals comply with OSHA safety-related work practices, the NFPA 70E standard, and CSA-Z462. Backed by a lifetime guarantee on mechanical parts and a two-year guarantee on insulation, the Cementex Reset Tool is a dependable addition to any safety toolkit.

For more information, visit [www.cementexusa.com](http://www.cementexusa.com)



**RANDL**  
INDUSTRIES, INC.

**Install Peace of Mind!**

First there was 4 square...  
and now the **REVOLUTIONARY 5 Square® Box!!**

You've struggled with 4 Square boxes for years - you know how small, cramped and time consuming they are. Finally, there is a solution that allows you the space you have always needed.

The **5 Square®** Boxes (5" x 5" x 2-7/8") provide up to 88 in<sup>3</sup> of interior volume which more than doubles that of most existing boxes on the market.

Create a robust and unrivaled infrastructure for the life of your facility with the **5 Square®** Products!

Fire Signal



- TWICE THE VOLUME AS MOST BOXES
- SAVE LABOR...INCREASE PROFITS
- ELIMINATES TROUBLESHOOTING TIME AND COST
- FULLY UPGRADEABLE SYSTEM
- SPECIFIED BY ENGINEERING FIRMS, HOSPITALS, UNIVERSITIES & GOVERNMENT AGENCIES
- AVAILABLE IN ZINC OR RED

RANDL Industries products are BAA & BABA compliant

Telecommunications



- INTEGRAL CABLE MANAGEMENT
- SAVE LABOR...INCREASE PROFITS
- FACILITATES MIN. BEND RADIUS REQUIREMENTS
- SUPPORTS CURRENT AND EVOLVING SYSTEMS
- SUPPORTS PoE PLUS
- SPECIFIED BY ENGINEERING FIRMS, HOSPITALS, UNIVERSITIES & GOVERNMENT AGENCIES



**RANDL**  
INDUSTRIES, INC.

P: 509.340.0050 • F: 509.340.0051  
See our line of telecom & fire signal boxes at: [www.RANDL-INC.com](http://www.RANDL-INC.com)  
*Making Communications & Fire Protection More Reliable & Cost-Effective!*



Gray Tools Launches Exclusive Grip-on® Locking Plier Sets for North America

Two new sets of Grip-on® locking pliers are now offered in the U.S. exclusively from Gray Tools. The 10-Piece Essential Set and 10-Piece General Set provide more than 40 percent savings over the purchase of individual tools and include a bonus storage rack for convenient tool organization.

The Grip-on sets feature popular styles and sizes of locking pliers and clamps. They have an epoxy resin coating for 10-times superior corrosion resistance and protection against welding spatter. A no-pinch, easy-release lever helps prevent the accidental pinching of hands and fingers. Additionally, a piano wire spring design maximizes tool life, while providing reliable opening and closing of the pliers.

Widely recognized as a leading brand of locking tools, Grip-on manufactures the widest and most modern range worldwide to meet the growing demands of automotive, maintenance and general welding professionals. All of the company's tools are manufactured entirely in Spain from the finest raw materials, using a decentralized production system in mini-factories with 100-percent quality control.

“Gray Tools is proud to partner with Grip-on, since their tools reflect the same industrial quality as our own hand tools,” said Dragos Baicoianu, Marketing Manager, Brand and Digital. “We have worked closely with Grip-on on designing and pricing these sets to ensure professionals can cost-effectively upgrade their locking tool collection. The new sets offer outstanding value, and we’re excited to bring them to the North American marketplace.”

The Grip-on sets can be purchased at shopdynamictools.com, amazon.com and other distribution partners of Gray Tools. They are backed by a lifetime warranty.

Gray Tools Inc. is an industrial-quality manufacturer and distributor of hand tools in Canada and has been manufacturing high-quality hand tools since 1912. The company currently offers more than 9,000 industrial product solutions under two brands: Gray and Dynamic. All Gray products are fully backed by Gray’s North American service and support.



Optique Lighting Millwork Series

The Millwork Series is a collection of 11 recessed and surface-mounted fixtures powered by Optique’s Nano Neon ultra-thin profile (0.16” W x 0.24” D) light engine that provides a flawless, continuous smooth glow of light with no inconsistencies. Designed with woodworkers in mind, the dimensions of each fixture match common router bits to ensure a clean, discreet and professional finish in every application. The series is tailored to fit Dovetail, T-Slot and other common router profiles, ensuring a smooth and intuitive installation into shelves, counters, desks, built-ins, and cabinetry.

The Millwork Series is offered in a variety of mounting angles including 90-, 60- and 45-degrees configurations, and a unique up/down configuration, which holds the Nano Neon light engine at various angles to provide flexibility and various lighting effects.

The series is offered in 2700K, 3000K, 3500K and 4000K color temperatures with superior color rendering and high R9 and R13 values. Color variation is kept within a 2-step MacAdam ellipse for unparalleled quality and consistency.

All Millwork fixtures include a factory pre-wired end piece making installation simple.



For more information, visit [www.optique-lighting.com](http://www.optique-lighting.com)



For more information, visit [www.graytools.com](http://www.graytools.com)

CBS ArcSafe® Introduces RSK-SRF30 Remote Switch Kit for PowerPacT Molded-Case Circuit Breakers

CBS ArcSafe®, a leading manufacturer of remote racking and switching solutions for low- and medium-voltage switchgear, introduces the RSK-SRF30, a remote switch kit (RSK) that allows technicians to remotely open, close, or reset Schneider/ Square D PowerPacT R-Frame molded-case circuit breakers from a distance.

Users get real-time feedback during operations on the handheld controller via a 30-foot operating cord. The device is powered by a Milwaukee M18™ REDLITHIUM ion battery pack and driven by a linear actuator with internal limit switches.

The RSK does not require external power or modifications to existing switchgear thanks to switchable magnets that make the device easy to install and remove. The RSK-SRF30 comes with a custom foam hard plastic case for easy transport and safe storage.

All CBS ArcSafe products are manufactured in the United States at our facility in Denton, TX.



For more information, visit [www.CBSArcSafe.com](http://www.CBSArcSafe.com)



Milwaukee® Enhances Jobsite Safety and Dust Control

Milwaukee Tool unveils a revolutionary dust extraction solution with the new M18 FUEL™ 9 Gallon Dual Battery Dust Extractor w/ PACKOUT™ Compatibility and VACLINK™. This innovative dust extractor sets new standards for productivity and safety on jobsites for general contracting, mechanical, HVAC, electrical, plumbing, and remodeling professionals. With the highest sustained air flow, versatile power for all-day productivity, and the integration of VACLINK™ Wireless Dust Control, this solution redefines cordless dust extraction.

The M18 FUEL™ 9 Gallon Dual Battery Dust Extractor features an automatic filter cleaning mechanism that alternately cleans the dual HEPA filters. Providing the ability to maintain consistent airflow and boost efficiency during dust extraction applications, users are more productive on the jobsite. Optimized

for concrete dust, drywall dust, and sawdust, the extractor, paired with two HEPA filters, delivers OSHA Table 1 Compliance. The extractor is equipped with a low flow alarm to alert users when airflow drops below optimal performance. Also capable of wet clean-up, this solution includes water sensors that indicate if the tank is full.

The new M18 FUEL™ Dust Extractor offers dual-power options for demanding applications, providing versatility for all-day productivity. The POWERSTATE™ Brushless Motor delivers 125 CFM on two M18™ Batteries and 175 CFM when plugged in. Equipped with two M18™ REDLITHIUM™ FORGE™ HD12.0 Batteries, the MAX POWER MODE delivers up to 41 minutes of continuous cleaning and 78 minutes on MAX RUN-TIME MODE.

Milwaukee’s Dust Extractor is equipped with VACLINK™ Wireless Dust Control technology. Users can pair the extractor with VACLINK™ compatible tools or remotes to wirelessly activate the extractor during dust-producing applications. The dust extractor comes with the VACLINK™ Wireless Dust Control Remote, allowing users the ability to start/stop the dust extractor wirelessly, enhancing efficiency. Additionally, this solution includes a 36mm x 10’ anti-static hose and attached hose clip that connects to included power tool and table saw adapters, providing efficient dust collection when paired with other tools.

As an added benefit, the M18 FUEL™ 9 Gallon Dual Battery Dust Extractor is compatible with the PACKOUT™ Modular Storage System, offering unparalleled convenience and organization. This compatibility helps users reduce trips back and forth on the jobsite, allowing them to focus more on their tasks and less on transportation. With the inclusion of ONE-KEY™ functionality, users can effortlessly track and manage their tool using the ONE-KEY™ app.

Milwaukee is committed to improving productivity by providing performance-driven and trade-focused solutions so users can perform an entire day’s work on one battery system. The M18 FUEL™ 9 Gallon Dual Battery Dust Extractor w/ PACKOUT™ Compatibility and VACLINK™ is fully compatible with the entire M18™ line, now offering more than 275 solutions.

For more information, visit [www.milwaukeetool.com](http://www.milwaukeetool.com)





**SP PRODUCTS, INC.**  
Productivity and value thru ideas  
**FOR SAFER BETTER FASTER JOBS**

2024 NECA  
**ShowStopper**  
WINNER



Saves a great deal of time transitioning from PVC conduit to Rigid Conduit above slab without damaging PVC risers and chipping concrete eliminating a concrete repair job!

All SP Products Inc. Transition Fittings are manufactured for installation to either meet or exceed in accordance with NEMA TC2, TC3 or UL 651 specifications

# Galvanized Rigid Transition Couplings to Schedule 40/80 PVC Stub-Up

**When Concrete is Poured and Metal Below the Slab is Needed**

**Transitions in Less Than 5 Minutes!**

**Save Cost on the Rigid Nipple, Tape & Labor**

**Use for Entire Job - Not Just for Repair**



Save at Least **1 Hour** per Installation.

See Our Conduit Plug  
See page IP27c



See Our REAMING BITS for Transition Couplings



See page IP15

PATENT PENDING

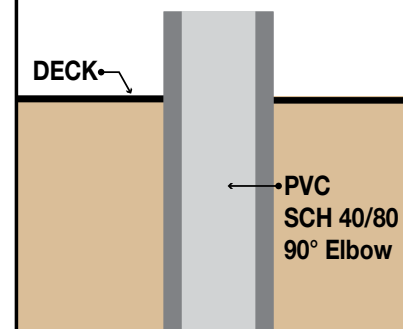
**1/2" thru 6"**

## Transition Couplings

Size	Catalog #
1/2"	50-PVC-R-GRC
3/4"	75-PVC-R-GRC
1"	100-PVC-R-GRC
1-1/4"	125-PVC-R-GRC
1-1/2"	150-PVC-R-GRC
2"	200-PVC-R-GRC
2-1/2"	250-PVC-R-GRC
3"	300-PVC-R-GRC
3-1/2"	350-PVC-R-GRC
4"	400-PVC-R-GRC
5"	500-PVC-R-GRC
6"	600-PVC-R-GRC

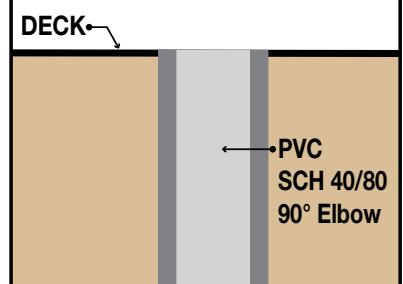
All Above Meet UL651  
CSA C22.2, No.85 and  
US Army Corps Engineers  
Specifications

### STEP 1



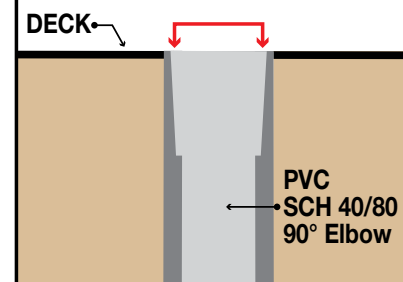
### STEP 2

Cut SCH 40/80 PVC Elbow Flush to Deck



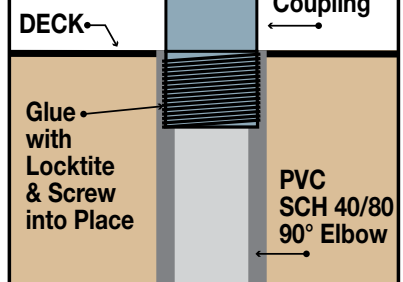
### STEP 3

Ream out 1/2 of wall thickness SCH 40/80 PVC Elbow



### STEP 4

Insert Galvanized Rigid Coupling



**Customer must satisfy all codes and owners' specifications.**

**SP PRODUCTS, INC.**  
Productivity and value thru ideas



PATENT PENDING  
PATENTED



LABELS APPLY TO PRODUCTS ONLY WHERE SHOWN ABOVE

730 Pratt Boulevard • Elk Grove Village, IL 60007  
P: (847) 593-8595 • F: (847) 593-8629 • Toll-free (800) 233-8595  
E: info@spproducts.com • www.spproducts.com



NEWPRODUCTS

15 Tube Lights in 1 Tube Light  
Wattage Selectable & Multi-CCT, T8 Tube Light

HyLite introduces the innovative OptiMax LED T8 Tube Light, offering unprecedented lighting customization with Wattage Selectable (12W / 15W / 18W) and Multi-CCT (3000K / 3500K / 4000K / 5000K / 6500K) options. This energy-efficient solution allows users to easily tailor lighting for any environment while significantly reducing energy consumption and maintenance costs. This innovative LED tube light is engineered with Wattage Selectable and Multi-CCT capabilities, providing users with the flexibility to customize their lighting environment with precision.

Maximize Savings with HyLite OptiMax LED Tube Lights: Streamline Inventory, Reduce Labor & Installation Time, and Lower Overall Costs.

The OptiMax simplifies upgrades with its ballast bypass AC direct design (120-277V) and compatibility with both shunted and non-shunted tombstones, directly replacing T8 and T12 fluorescent tubes. It boasts high efficacy (up to 128 LpW), a long lifespan (up to 50,000 hours), superior light quality (CRI >80, 320° beam), and is environmentally friendly (RoHS compliant, no UV). Ideal for offices, hospitals, warehouses, and more applications.

- Key Features:**
- Model Number: HL-GT8-4B-12-18W-3065K
  - Wattage Selectable: 12W (1,620 Lumens) / 15W (1,900 Lumens) / 18W (2,300 Lumens)
  - Multi-CCT: 3000K / 3500K / 4000K / 5000K / 6500K
  - Easy Ballast Bypass Installation: Direct replacement for T8/T12, compatible with various tombstones.
  - High Energy Efficiency: Up to 128 LpW, significant cost savings.
  - Long Lifespan & Quality Light: Up to 50,000 hours, high CRI, uniform distribution.

The HyLite OptiMax LED T8 Tube Light delivers exceptional performance and value by reducing energy costs, bulb and ballast replacement costs, re-lamping and lamp disposal issues, and costly equipment rental. It's also an environmentally responsible choice, minimizing pollution and waste.

For more information, visit [www.HyLiteLEDLighting.com](http://www.HyLiteLEDLighting.com)



Kwikon® Electrical Fittings

Kwikon® Electrical Fittings, including slab boxes and accessories, are engineered to tackle the toughest challenges. Made of high-impact PVC, these fittings are non-corroding and nonconducting and are suitable for various applications such as concrete encasement, wall or ceiling concealment, and direct burial. With unique features like 360° locking tabs, Kwikon® couplings and connectors ensure snap-on, lock-in installation that exceeds industry standards for conduit pullout. Additionally, Kwikon® offers concrete-tight slab boxes, complete with integrally molded hub connectors, providing a total integrated system that saves time and money. Ideal for residential, commercial, institutional, and industrial projects, Kwikon® fittings meet stringent CSA and UL requirements.

For more information, visit [www.Ipexna.com](http://www.Ipexna.com)

Affordable test equipment for 2025



- Spitfire** - Buried Low Voltage Cable Fault Locator
- ◆ Accurate
  - ◆ Easy to use
  - ◆ High energy output
  - ◆ Proven reliability
  - ◆ Compact design
  - ◆ Lightweight

- Wayfind'r** - Impulse cable tracer
- ◆ Accurate
  - ◆ Easy to use
  - ◆ Connects directly to energized cables
  - ◆ Distinct signal for easy tracing
  - ◆ Traces direct buried and cables in conduit
  - ◆ Rugged, compact design

- Impulse Phaser** - Cable / phase system
- ◆ Accurately identifies cables in trenches, vaults, conduits and enclosures
  - ◆ Identifies jacketed, shielded, cables, even in pipe
  - ◆ Accurately identifies phases in multi-conductor cables
  - ◆ Easy to understand and use



# TIMCO

INSTRUMENTS, LLC

Phone: (401) 539-7120 Fax: (401) 539-6018  
[www.timcoinstruments.com](http://www.timcoinstruments.com)





## MAGNATRON YOUR GFCI SOURCE



15- or 20-amp, TR & TR/WR  
\$6.00 each/\$300  
per case of 50

### Purchase in bulk to receive additional discounts:

10 cases = 5% off  
20 cases = 10% off  
30 cases = 15% off  
40 cases = 20% off  
50 cases = 25% off

### Need More Information?

Vist our website at [www.magnatron.us](http://www.magnatron.us) or call 855-624-6258

**If your order is \$1,000 or more,  
we pay the freight charges!**

Division of TNT Industries US Inc.

## MAGNALUX YOUR BACKLIT LED PANEL SOURCE



### 1X4FT Panel

Warehouse Pick Up Price	Ship Price
<b>\$19.75</b>	<b>\$24.75</b>



### 2X2FT Panel

Warehouse Pick Up Price	Ship Price
<b>\$19.55</b>	<b>\$24.55</b>



### 2X4FT Panel

Warehouse Pick Up Price	Ship Price
<b>\$27.57</b>	<b>\$32.57</b>

### Product Features:

- Backlit technology that offers even lighting distribution without shadowing.
- Color selectability allows for changing between 3500K, 4000K or 5000K.
- Wattage/Lumen selectable versions: three different lumen outputs in the same product.
  - Emergency battery back-up unit.
  - The range input voltage 120-277V.
  - 125 lumens per watt -CRI>80
  - DLC Premium/DLC Standard

### Areas of Application

The backlit Panels are the high efficiency solution for offices, schools, hospitality and retail areas.




ADVERTISER INDEX

This advertiser index is compiled as a courtesy to our readers. While every effort is made to provide a complete and accurate listing of companies and page numbers, the publisher is not responsible for errors. **Click the company name or page number to see their advertisement.**

Company	PG#	Company	PG#
APPLETON / EMERSON	13	RANDL INDUSTRIES	23
APPLETON / EMERSON	15	SP PRODUCTS INC	1
BASETEK, LLC	5	SP PRODUCTS INC	19
CONDUIT REPAIR SYSTEMS	4	SP PRODUCTS INC	26, 27
iTOOLco	IFC	SP PRODUCTS INC	BC
iTOOLco	21	TIMCO INSTRUMENTS	29
iTOOLco	IBC	TNT INDUSTRIES US INC	30, 31
KRENZ & COMPANY	32	UNDERGROUND DEVICES	3
MILLER SAFETY CONSULTANTS LTD	7	UNDERGROUND DEVICES	17
MILLER SAFETY CONSULTANTS LTD	11		

When it comes to transformer cooling fans, Krenz-Vent is the industry recognized gold standard. Our leadership position is earned through 80+ years of R&D plus our superior engineering and customer service. You can rest easy when you specify Krenz fans.

**ENGINEERED TO COOL**  
There is no comparison.



**KRENZ & COMPANY, INC.**  
KRENZVENT.COM • 262.255.2310 • KRENZ@KRENZVENT.COM

ALL THE INFORMATION YOU NEED IS JUST A CLICK AWAY AT **WWW.EPSMAG.NET**

**Electrical Products & Solutions**

Transition Couplings  
PVC Bell End Adapter  
Galvanized Rigid Conduit - 1/2" thru 6"

HOME ARTICLES NEWS VIDEOS PRODUCTS SUBSCRIBE CONTACT

Warming Up to Electrical Heating Cables

WHAT'S NEW

Conduit Repair Systems, Inc.  
The World Leader in Split Conduit Products

EPS Magazine in Your Inbox

DMF Lighting Expands its M Series Commercial Collection with High Lumen Packages for Hospitality and Mix-Use Spaces

New Multi-Tester from Klein Tools® Combines Core Electrical Products into One Model

HPS Launches SineWave Filter To Safeguard Motor and Cables

CORDLESS  
CANNON 6K

**iTOOLco.**

WWW.iTOOLco.com | 865.670.3713



Speed, versatility, and performance are all yours with iTOOLco's Cordless Cannon 6K™. This portable 6,000 lb. puller is intuitively designed to handle all of your day-to-day wire pulls.

The built-in capstan switch automatically turns the puller on and off. Simply tug on the rope to start the pull and slack off the rope to shut it down. Delivers dynamic performance in remote locations or areas where power is not yet available.







# SPPRODUCTS, INC.

Productivity and value thru ideas  
**FOR SAFER BETTER FASTER JOBS**

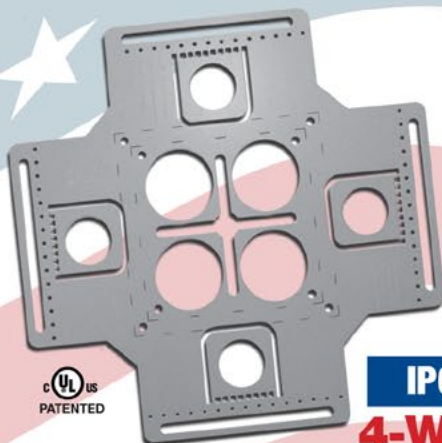


We're Proud to be the Electricians' Friend for Over 50 Years!

**IP5**

**"The Original"**

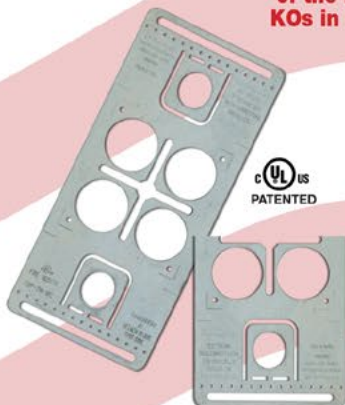
Enter Any KO on Both Sides of the Box



**IP6**

**4-Way**

Enter Any KO on All 4 Sides of the Box Plus 4 Large Open KOs in Center Allows Entering Back of Box



**IP6a**

**2-Way/Half**

Enter Any KO on 1 or 2 Sides of the Box Plus Large Open KOs in Center Allows Entering Back of Box



**IP19/20**

4-Conduit Block  
PATENTED



**IP21a**

QwikBlock  
PATENT PENDING

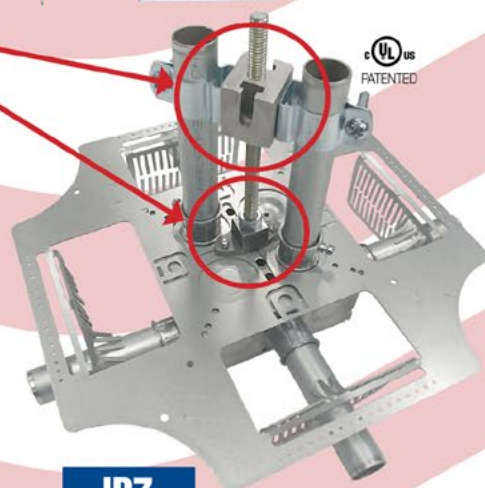
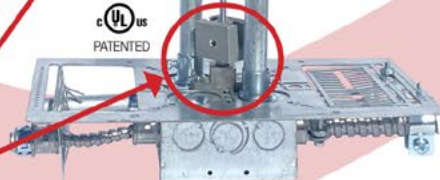
Use 4-Conduit Block (IP19 or IP20) with QwikBlock (IP21a)

**Our Family of Conduit & Box Support Plates Saves Valuable Time & Money!**

**IP6d**

**2-Way**

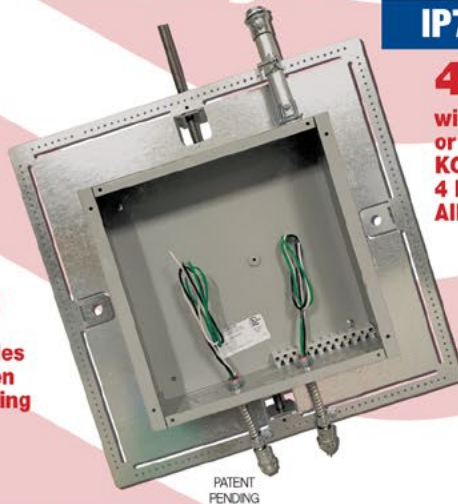
with Split Fingers for Horizontal or Vertical Installation



**IP7**

**4-Way**

with Split Fingers for Horizontal or Vertical Installation. Enter Any KO on All 4 Sides of the Box Plus 4 Large Open KOs in Center Allows Entering Back of Box.



PATENT PENDING

**IP8**

Mount Horizontally or Vertically from One Single Support

**20 x 20**

Supports up to 12 x 12 J-Box

**28 x 28**

Supports up to 20 x 20 J-Box

**MADE IN THE USA!**

Plus More Being Invented for **SAFER BETTER FASTER** Jobs . . . Call With Your Ideas!

SPProducts.com **800-233-8595** info@SPProducts.com