

Electrical

Products & Solutions

The Purchasing Guide for Electrical Contractors

SEPTEMBER 2025

www.epsmag.net

A construction worker wearing a neon green long-sleeved shirt, khaki pants with black knee patches, and a maroon hard hat is standing on a rooftop. He is holding two long, flexible white conduits. The rooftop is covered with a grid of steel reinforcement bars (rebar). In the background, there is a modern multi-story building with a glass facade and a wooden frame structure under construction.

**Florida Project
Manager Achieves
Nearly 40% Reduction
in Labor Costs**

CANNON 12K

THE TOUGHEST WIRE PULLER YOU'LL EVER USE!

EXTRA EXTENSIONS:
giving you up to 13' of wire from the conduit opening.

SIX SPEEDS:
Dual capstans with 3 speeds on each AND reverse gear!



12,000 Lb. pulling capacity.



Dual capstans with a 3 speed motor.



Overhead, underground and side pull capabilities.

We're Proud to be the Electricians' Friend for Over 50 Years!

NEW PRODUCT!

IP10a

EZ STUB-UP

Join two EZ Stub-Ups with strut to support and secure multiple stub-ups on wooden forms before concrete pour for sizes 1/2", 3/4", 1" & 1-1/4" stub-ups with SP's Nylon Support Brackets and transition to RGB with our transition couplings.

IP1

Qwik Duct Safer Better Faster

**IP3b
IP3c**

HDPE CUSTOM TEMPLATES
In Any Configuration Required

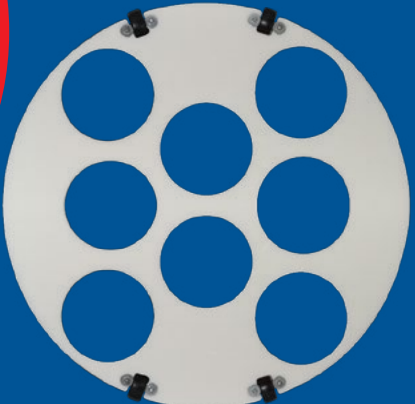
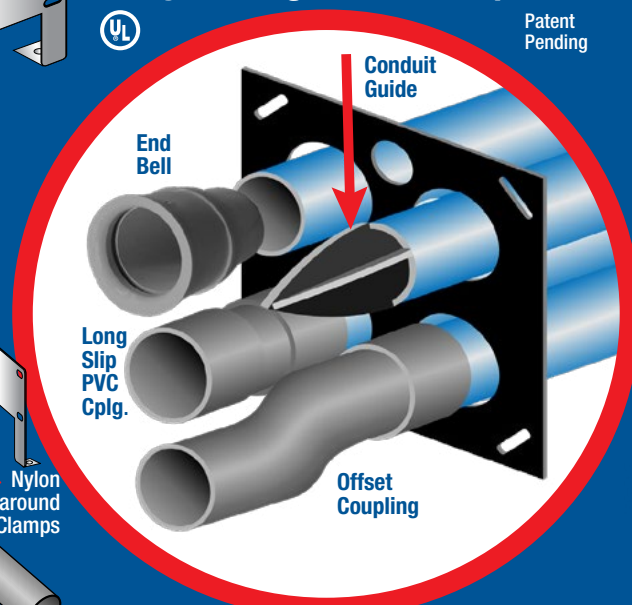
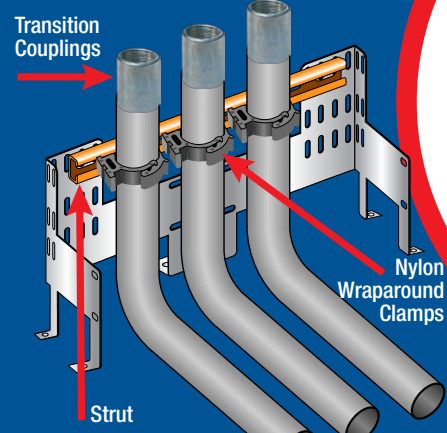
PVC Offset

Sizes 1/2" thru 6"
Meets Flexible Madrel Test Requirements

Bore Spacers

Sizes 1/2" thru 6"
Roll assembled conduit into caissons and under obstructions

IP2a



IP13a-p

Conduit Transition Couplings



Save Cost on the Rigid Nipple, Tape & Labor
Use for Entire Job - Not Just for Repair

Plus More Being Invented for SAFER BETTER FASTER Jobs . . . Call With Your Ideas!

Electrical Products & Solutions™
issue sponsors



COMPANY PROFILE

6 Protect Yourself
Miller Safety Consultants —
A Leader in Arc Flash Protection
BY VINCENT MILLER

COVER STORY

8 Florida Project Manager Achieves Nearly 40% Reduction in Labor Costs with Kwikon® ENT System by IPEX
BY VADYM HORDOV

DEPARTMENTS

- 14** INDUSTRY NEWS
- 22** NEW PRODUCTS
- 32** AD INDEX

ON THE COVER

Photo courtesy of IPEX



Electrical
Products & Solutions™
The Purchasing Guide for Electrical Contractors www.epsmag.net

PUBLISHER
Danny J. Salchert
OFFICE MANAGER
Anita Salchert
CREATIVE DIRECTOR
Derek Gaylard
CIRCULATION DIRECTOR
Pam Fulmer
CONTRIBUTING WRITERS
Vincent Miller
Vadym Hordov

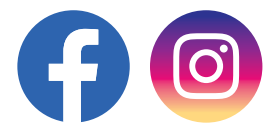


PRESIDENT
Danny J. Salchert

EXECUTIVE AND ADVERTISING OFFICES
2009 Eagle Ridge Drive
Birmingham, AL 35242
phone: 205.981.4541
www.epsmag.net
danny@epsmag.net

Electrical Products & Solutions™ is published twelve times a year on a monthly basis by ABD Communications, Inc., 3591 Cahaba Beach Road, Birmingham, Alabama, 35242, USA. *Electrical Products & Solutions™* is distributed free to qualified subscribers. Non-qualified subscription rates are \$57.00 per year in the U.S. and Canada and \$84.00 per year for foreign subscribers (surface mail). U.S. Postage paid at Birmingham, Alabama and additional mailing offices. *Electrical Products & Solutions™* is distributed to qualified readers in the electrical contracting industry. Publisher is not liable for all content (including editorial and illustrations provided by advertisers) of advertisements published and does not accept responsibility for any claims made against the publisher. It is the advertiser's or agency's responsibility to obtain appropriate releases on any item or individuals pictured in an advertisement. Reproduction of this magazine in whole or in part is prohibited without prior written permission from the publisher.

FOLLOW US ON



The Heavy Duty Nonmetallic
CABLE RACK

For Power and Communications Manholes And Vaults



PRODUCT FEATURES:

- High Load Capacity
- Will Not Rust or Corrode
- No Grounding or Bonding
- Insulators Not Required
- Excellent Dielectric Properties
- Molded from UL Listed Glass Reinforced Polymer



HDL Arm Lock shown with RA04 Arm and CR36-B Stanchion



3HDS - 3" throat saddle shown with a cable secured by cable ties.



RA08 - 8" arm shown with three cables secured by cable ties.

US PATENT No. 7,140,500
CANADIAN PATENT Nos. 2,486,904 - 2,640,899

UNDERGROUND DEVICES
INCORPORATED



420 ACADEMY DRIVE
NORTHBROOK, IL 60062
Phone: 847-205-9000 • Fax: 847-205-9004
Website: www.udevices.com

REPAIR CONDUIT IN A SNAP!

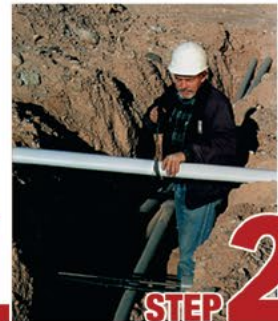
No Tape • No Plastic Straps • No Metallic Straps

NO KIDDING!

Designed especially for power, communications and fiber optics.



Remove damaged conduit



Cut split duct conduit to fit



Snap in place

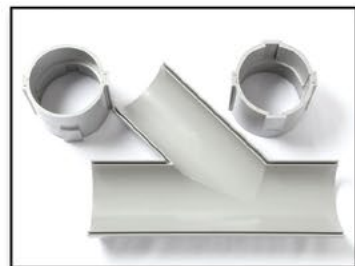


Attach adapters



Finish job in record time

"The World Leader In Split Conduit Products"



Conduit Repair Systems, Inc.
The World Leader In Split Conduit Products



800.670.1804 • 435.673.8724 fax • crs@conduitrepair.com • www.conduitrepair.com

BASETEK

ZANITE PLUS POLYMER COMPOSITE
A base you can build on.

Call us today **877.712.2273**

PRECAST POLYMER HOUSEKEEPING PADS

- **Customized** to fit your exact project
- **4X Stronger** than traditional concrete pads
- **Rapid Installation** and Labor Savings
- **Stainless Steel** inserts for mounting equipment to the pad
- **Counter Bore** anchoring to existing concrete
- **Excellent** Corrosion Resistance
- **Flexibility and Options:**
 - Bottom access
 - Exact sizes
 - Dedicated handling and lifting



SET YOUR PRECAST POLYMER PAD AND MOUNT YOUR EQUIPMENT THE SAME DAY!

GO GREEN
environmentally friendly

Reuseable — just unbolt and move

For more visit
basetek.com or
info@basetek.com



Built to last
and outperform.

We guarantee it.

©2025 BaseTek, LLC.

Zanite Plus is a registered trademark of BaseTek LLC.

Protect Yourself

Miller Safety Consultants — A Leader in Arc Flash Protection

Vince Miller started Miller Safety Consultants, a veteran owned business in 1999. The goal of the business was to provide cost effective safety consulting, employee training such as: confined space entry, fall protection, electrical safety and provide sales of electrical shock and flash protective equipment and fall protection equipment to businesses in the Washington DC area.

Reliance Industries provided fall protection products and much of the sales and training was on behalf of the supplier. In 2000, the owner decided to retire from his business, and Vince decided to discontinue the fall protection line of his business and concentrate more in the electrical training and products.

Vince had been a distributor for Certified Insulated Products (CIP), a manufacturer of electrical insulated tools and electrical arc flash clothing manufactured by Otex in Rochester, New York. As a distributor, Vince provided sales through his internet website and much through relationships with electrical contractors. His training was a classroom environment and was provided directly to customers but he also taught as a sub-contractor for other safety consulting companies and the

Chesapeake Safety Council in Baltimore, Maryland. In 2005, Vince partnered with Vivid Learning Systems in Cascades, Washington to provide on-line training in safe work practices.

Training in electrical safe work practices is still provided locally in the Washington DC area and as a partner with an electrical engineering firm and online. The training is based on the Occupational Health and Safety Administration (OSHA) standards and the National Fire Protection Association (NFPA) 70E standard.

Miller Safety Consultants is now a distributor for Cementex USA, Burlington, New Jersey, for insulated tools and equipment and clothing from OTEX Protective, Rochester, New York.

The majority of his sales of products

are from the web-based store. Cementex is nationally known for their quality equipment. Otex Protective is becoming more known for their quality clothing. For years, they have manufactured their products under other provider labels. Vince chose to not create his clothing line, but to sell the manufacturer product.

Vince has worked with many electrical company employees to fine-tune the clothing to be more comfortable for the user. Working closely with the manufacturer, they have made slight changes in how the cloth pattern was modified to meet final production. An example is the lightweight 40 Calorie vented hood offered by Otex.

The material is of the latest technology. The vented assembly is constructed for balance on the back of the hardhat and the airflow is 27 CFM to prevent fogging of the face shield and provide cooling to the worker. It took over a year to develop the product with the user prior to having the hood “flash tested”. This product is now standard issue with many electrical contractors.

Being a small business and having quality providers has resulted in satisfied customers for Miller Safety Consultants. Being a direct supplier for OTEX Protective, another small business means customized customer needs can be met. □

For more information, visit
Miller Safety Consultants at:
www.electricalsafetysupply.com, email
Vince at: sales@millersafetyltd.com.

AUTHORIZED
Cementex
The Safety Tool Specialists
DISTRIBUTOR

Give Vince a call at
(703) 367-0404



Deluxe Maintenance Tool Kit



Class O Glove Kit

Protect yourself from “Arc Flash”

We offer two lightweight 40 cal rated systems for employee protection -
PYRAD® Technology by GORE-TEX LABS, single layer and the two layer **HYBRID (Protera/Indura)** models.
Our unique V-5 ventilation systems using Milwaukee’s M12 rechargeable battery
with our patented “arc flash sensor” technology.



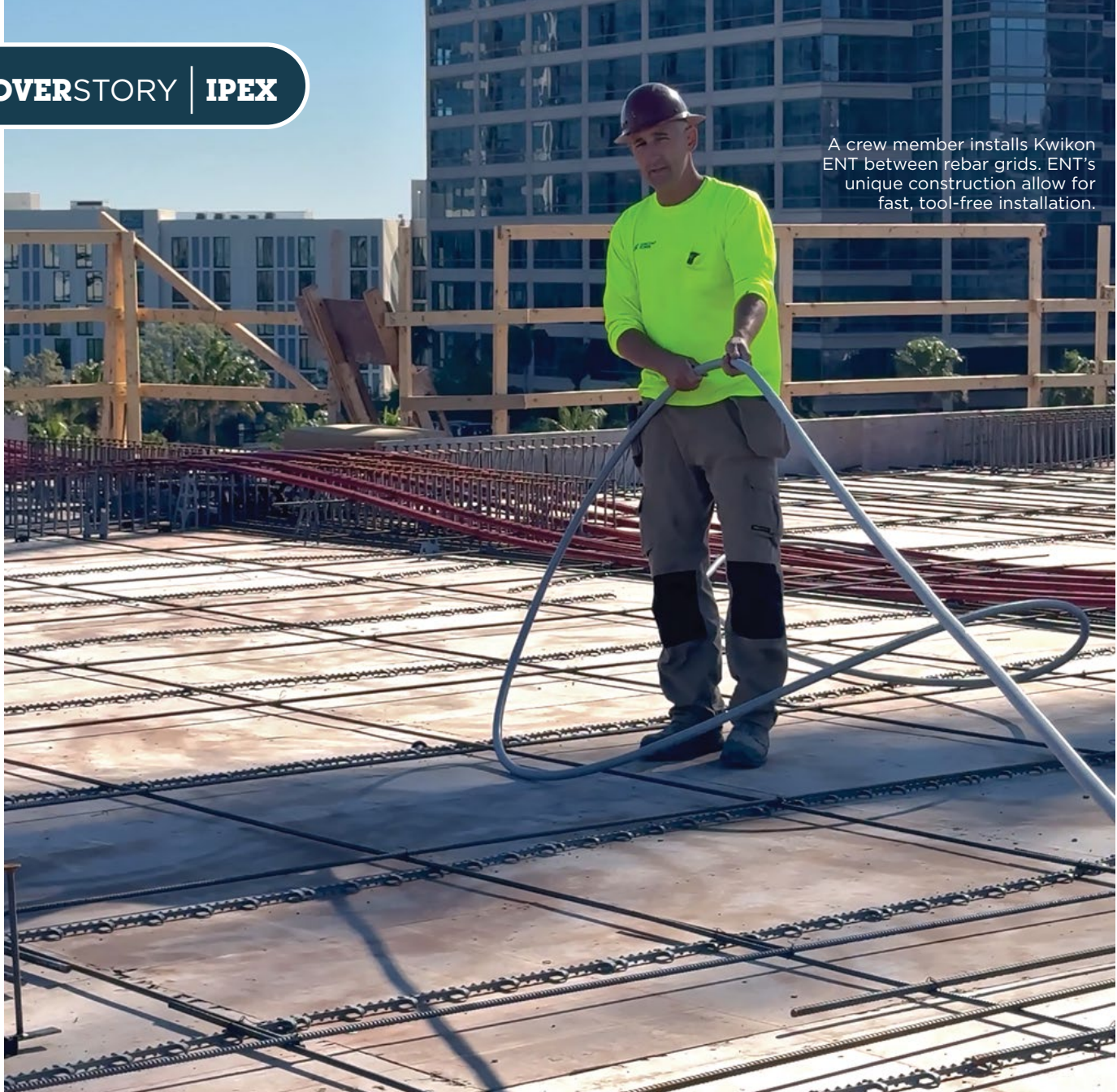
Both lift hoods feature 30 CFM ventilators. The arc sensor automatically disconnects the fan power to stop the air flow and maintain a safe breathing zone within the hood.



CALL US TODAY
(703) 367-0404

OR VISIT OUR ONLINE ELECTRICAL SAFETY EQUIPMENT STORE
www.electricalsafetysupply.com





A crew member installs Kwikon ENT between rebar grids. ENT's unique construction allow for fast, tool-free installation.

Florida Project Manager Achieves Nearly 40% Reduction in Labor Costs with Kwikon® ENT System by IPEX

BY VADYM HORDOV, CHANNEL MARKETING MANAGER, ELECTRICAL

Eight-story, mixed-use project in Tampa leverages electrical nonmetallic tubing and fittings for unmatched installation flexibility and efficiency.

Problem

Mixed-use developments have gained immense popularity in metropolitan areas due to their remarkable versatility and optimal use of land and space. These projects create thriving communities that foster interaction and

convenience by seamlessly integrating residential and commercial areas within a single footprint. A significant recent example of this emerging trend is an eight-story mixed-use development, spanning nearly three quarters of a million square



“The decision to use the Kwikon product line was a team effort from our field guys and office staff, driven by cost, availability, and significant labor savings.”

—Tim Boyes, Project Manager

A wide view of the elevated deck before concrete pour. Kwikon tubing is fully secured in place, providing a streamlined pathway for electrical systems.



A large reel of Kwikon ENT ready for deployment. Its lightweight, flexible PVC design makes it easy to handle and fast to install, reducing labor time significantly on the jobsite.

feet, currently under construction in downtown Tampa. This two-year project includes 375 residential units and approximately 90,000 square feet of amenity space. The first six months of the project focused on vertical construction using cast-in-place concrete, followed by the interior development of the apartments, amenity retail spaces, and parking garage facilities.

Proper electrical installation is crucial for safety and functionality in construction. It ensures the reliability of electrical systems, protects occupants and the building from hazards like fires and shocks, and meets regulatory requirements. A well-designed and installed electrical system is essential for powering lights, appliances, and security systems.

In search of a dependable and cost-effective solution, 25-year veteran Project Manager Tim Boyes along side Suncoast Power, a reputable contracting service based in Florida, to explore

electrical conduit and raceway options.

Having successfully collaborated with IPEX, the recommendation and suitable solution was Kwikon® ENT and Fittings for this project.

“I had never worked with Kwikon ENT and Fittings before,” says Boyes. “The decision to use the Kwikon product line was a team effort from our field guys and office staff, driven by cost, availability, and significant labor savings.”

Solution

Choosing the right conduit for high-rise construction can significantly impact project efficiency and costs. While rigid PVC (Polyvinyl Chloride) conduit may have a lower upfront material cost, ENT (Electrical Nonmetallic Tubing) offers more significant advantages due to its lighter weight and flexibility, which drive labor savings and installation efficiency.

This innovative flexibility eliminates the need for bends and glue while



Kwikon ENT fixed to vertically placed rebar.

reducing reliance on couplings and adapters, making the overall installation process more streamlined and efficient. With a simple “snap,” the ENT conduit can be easily installed and routed in any direction.

The Kwikon ENT system is an innovative solution comprising impact-resistant PVC tubing and various fittings that establish connections and serve as access points for electrical wires. This system is designed to protect wiring by creating designated pathways for electrical cables to run throughout the mixed-use building, including beneath its floors.

A key highlight of Kwikon tubing is its lightweight design—as much as 55% lighter than traditional rigid PVC conduit. This factor enables one installer to carry an entire coil without hassle. The tubing is engineered to reduce bulk while maintaining durability, allowing on-site workers to handle it conveniently.

The fittings are installed strategically, such as where lighting fixtures are to be positioned, enabling easy access to the wiring. Additionally, the system accommodates wiring for other essential electrical components, such

TOOLS YOU CAN TAKE TO THE BANK!



FINALLY, A TOOL YOU CAN TAKE TO THE BANK!

KNOCK'ER-IN pipe and conduit anvil is proudly **MADE IN U.S.A.** and provides a safe and efficient alternative to the traditional 2 x 4 method of joining pipe, conduit, and fittings.

If your goal is to increase worker safety and productivity; **KNOCK'ER-IN** will get you there, ten-feet at a time.

- Develop a Consistent Work Method
- Minimize 'Struck-by' Incidents
- Reduce 'Strains & Sprains'
- Prevent Long-Term Muscle, Joint, and Back Injuries
- Standardize Communication - "Knock'er-In"

Invented by a second-generation Electrical Worker, who, prior to advancing in the industry, served his 10,000hrs in the trenches.

Our patent pending design is built for worker safety and comfort. The molded polyurethane block coupled with a fiberglass handle and rubber handgrip, provides a cushion for every blow. The positioning-shoe offers stabilization through the strike. Built with a concave-arch bottom... because sometimes you need to, Knock'er-off.



Brining the proper size mallet to the bank is many times overlooked. But what is the correct hammer to use, when joining conduit with a piece of wood? None!

We pair **KNOCK'ER-IN** with a 3 LB x 16" Hammer because it swings good, feels good, and gets the job done safely.

KNOCK'ER-IN
MADE IN U.S.A.
www.innisfreetools.com

FOR MORE INFORMATION, CONTACT:
INNISFREE TOOLS, LLC
info@innisfreetools.com





Kwikon ENT connects into electrical slab boxes using snap-in fittings with 6 locking tabs for secure connections perfectly suited for concrete encasement.

as fire alarms and light switches, facilitating efficient power distribution and communications throughout the building.

The Tampa project’s electrical system was put in place during the construction of each building level, with concrete poured over the installed tube and fittings. An installation depth of six to ten inches is often recommended for general safety and damage avoidance, with eight inches suitable for conduit under concrete.

The Kwikon system is recognized for its uncrushable strength. Boyles and his team put it through rigorous testing, and the results confirmed his opinion that it remains uncrushable under standard conditions. Even with the added construction challenges of rebar and surrounding materials, the installation was completed without any problems.

Boyes emphasizes: “The product quality effectively resolves any potential shortcomings. Its tolerances ensure an easy installation every time.”

With fewer connections to assemble and the minimization of other labor-intensive tasks, the installation took



Concrete being poured over a pre-installed Kwikon ENT system. Kwikon ENT is engineered to withstand concrete pours without collapsing, ensuring safe and secure conduit placement.

less time than anticipated. A reduced crew, consisting of two to three skilled workers at different times, finished a quarter of a floor each week.

Results

Boyes’s use of the Kwikon ENT System was a satisfying first for his company. As a result, he is now a strong proponent of Kwikon and its capabilities.

“I wish I had used the Kwikon ENT system earlier,” he says. “If I had to describe it in three words, they would be flexible, versatile, and durable.”

When asked whether he agreed that the implemented system contributed to achieving time savings of 30% to 40%, he responded with an affirmative “yes!” adding that the system’s efficiencies ultimately led to substantial reductions in labor costs. □



Appleton™ IJL LED Series Luminaires

Versatile and Adaptable Illumination for Any Environment

Appleton™ IJL LED Luminaires by Emerson are the premier jelly jar LED luminaires for industrial locations that offer versatile and adaptable illumination. With user selectable technology, they allow users to choose from a range of correlated color temperatures (CCT) and/or lumen outputs. Our engineers have developed specially designed optics that provide optimal light distribution – including upright. The IJL LED Luminaires offer multiple mounting options such as wall, ceiling, and pendant, with an adjustable arm that allows precise rotation in 10° increments from 0° to 90°.

Learn More at: www.masteringled.com



Electri-Flex Company Announces Vice President of Sales & Marketing

Electri-Flex Company, a leading manufacturer of flexible Liquatite® conduit, is proud to announce the promotion of Brock Klein, Director of Sales & Marketing, to Vice President of Sales & Marketing.

“Since joining Electri-Flex, Brock has played a key role in shaping the direction of our sales and marketing efforts,” said Jan Ruthe, COO. “Through his vision, leadership, and dedication, he has helped pave the way for both the team and the company to

reach new levels of performance.”

In his new role, Brock will continue to lead strategic initiatives, strengthen customer partnerships, and foster cross- departmental collaboration to ensure cohesive company growth. He joined Electri-Flex in 2017 as Regional Sales Manager, bringing with him over a decade of experience in the electrical industry, including business development and product management.

To learn more about the Electri-Flex team, please visit www.electriflex.com/about/meet-the-team/. □



ABOUT ELECTRI-FLEX COMPANY

Electri-Flex Company, a leader in electrical conduit design and manufacture for 70 years, produces Liquatite®, the most diverse line of liquidtight flexible electrical conduit in the industry. The company offers custom design, engineering, quality assurance, and testing capabilities. For more information on Electri-Flex Company, call (630) 529-2920 or (800) 323-6174; fax: (630) 529-0482; e-mail: mktg@electriflex.com; visit: www.electriflex.com; or write: 222 West Central Avenue, Roselle, IL, 60172-1994.



Sparkstone Electrical Group Unites Four Industry Leaders to Redefine Speed in Power Distribution

Sparkstone Electrical Group (SEG) today announced the launch of its unified brand, bringing together four of North America’s most established electrical equipment manufacturers — Chicago Switchboard, CES Industrial, IER, and Park. With roots dating back to 1936 and facilities strategically located across the U.S., SEG delivers custom switchgear, control panels, engineered solutions, and services with the industry’s fastest lead times.

“In today’s fast-paced market, delays in power distribution equipment can derail entire projects,” said Ken Alloway, president of SEG. “SEG combines the experience, innovation, and resources of our companies to give customers the

speed, reliability, and technical expertise they need to meet deadlines without compromising quality.”

Four Companies, One Strong Foundation

- Chicago Switchboard has been a leader in custom UL 891 switchboards and engineered control panels for critical industries since 1936.
- CES Industrial has provided turnkey industrial automation systems and control panels since it was established in 1998.
- IER has been delivering custom switchboards and panelboards across commercial and industrial markets for more than 25 years.
- Park was established in 1945 and

has proven expertise in medium-voltage metal-clad and metal-enclosed switchgear serving utility, industrial, and commercial applications.

Together, these brands create a foundation of expertise that powers SEG’s ability to respond quickly and reliably to customer needs.

Setting a New Standard

SEG differentiates itself with industry-leading quick-ship capabilities for low-voltage and medium-voltage equipment. From UL 891 switchboards and UL 1558 switchgear to medium-voltage metal-clad systems and custom control panels, SEG delivers solutions engineered to meet aggressive project timelines. □

ABOUT SPARKSTONE ELECTRICAL GROUP

Sparkstone Electrical Group (SEG) provides fast, reliable power distribution and control solutions, backed by decades of industry expertise and a nationwide network. From quick-ship switchgear and control panels to comprehensive engineering and service support, SEG delivers agile, high-performance solutions that enhance safety, reliability, and efficiency.



IWL LED Series Luminaires

Wall Pack LED Lighting for Industrial Facilities

The Appleton™ IWL LED Series Luminaires by Emerson are designed to provide safe illumination at outdoor entrance doors and along the exterior of commercial and industrial facilities. Three models — each with three field selectable wattages (lumen outputs) and three field selectable color temperatures — ensure the perfect configuration for your unique application requirements. Improve employee safety and security with the IWL’s bright, cost-efficient illumination.

Learn More at: www.masteringled.com

APPLETON™

The Emerson logo is a trademark and a service mark of Emerson Electric Co. © 2024 Emerson Electric Co.



DMF Lighting Appoints Charlie Derk as Senior Director of Product Strategy

Industry veteran brings expertise in lighting control and product design to drive DMF’s next phase of growth

DMF Lighting, the leader in modular lighting in the technology integration channel, today announced the appointment of Charlie Derk as Senior Director of Product Strategy. In this new role, Derk will lead DMF’s product roadmap and innovation strategy, driving the continued development of cutting-edge lighting solutions designed to elevate performance, aesthetics, and integration for the smart home industry.

With more than 25 years of experience in the luxury residential and architectural lighting industries, Derk brings a unique blend of engineering expertise, market insight, and customer-driven innovation. He has held leadership positions at Legrand, Crestron Electronics, Doherty Design Group, and Lutron Electronics, where he was instrumental in shaping product portfolios and introducing advanced lighting control and automated shading solutions.

“Charlie’s deep understanding of the lighting and shading landscape and his proven ability to deliver transformative technologies make him an invaluable



addition to our team,” said Rushi Kumar, VP of Engineering at DMF Lighting. “As we continue to redefine the possibilities of modular lighting, his vision and experience will accelerate our mission to deliver products that combine unmatched performance with seamless integration.”

Derk joins DMF Lighting following his most recent role as Vice President of Strategy for Legrand’s Building Control Systems division, where he oversaw long-term strategic planning, product innovation, and M&A initiatives.

Earlier in his career, he helped pioneer shading solutions at Crestron, designed sophisticated lighting control systems with Doherty Design Group, and contributed to the development of the HomeWorks platform at Lutron.

“I’m thrilled to join DMF Lighting at such an exciting time in its growth,” said Derk. “The company’s dedication to engineering excellence and its reputation for innovation align perfectly with my passion for creating solutions that empower integrators, designers, and homeowners. I’m especially excited to reunite with former colleagues I’ve built great products with in the past, and to do it again here at DMF as we push the boundaries of what’s possible in lighting design.”

Derk’s appointment underscores DMF Lighting’s commitment to expanding its leadership in high-performance, modular lighting and further strengthens the company’s position as a trusted partner for integrators, architects, designers, and builders across the industry.

More information is available at www.dmfluxury.com. □

“The company’s dedication to engineering excellence and its reputation for innovation align perfectly with my passion for creating solutions that empower integrators, designers, and homeowners. I’m especially excited to reunite with former colleagues I’ve built great products with in the past, and to do it again here at DMF as we push the boundaries of what’s possible in lighting design.”

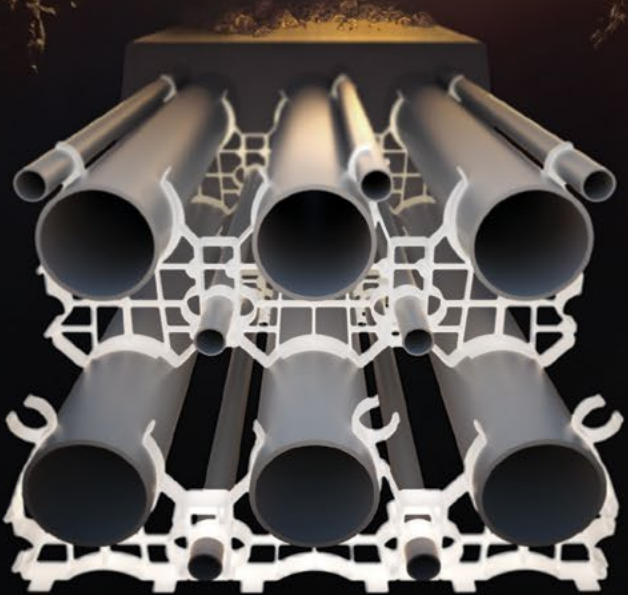
—CHARLIE DERK, SENIOR DIRECTOR OF PRODUCT STRATEGY

ABOUT DMF LIGHTING

DMF Lighting brings a creative approach to lighting and offers industry-leading technology that sets the bar for performance, quality, and flexibility. Our in-house research and development team designs products that provide exceptional aesthetics and are modular, which allows our lights to adapt easily to project changes or a future room redesign. DMF Lighting LED downlights produce accurate color rendering and smooth dimming and have low power consumption. They complement and enhance how a room looks and feels without sacrificing energy efficiency. At DMF Lighting, we understand that light is more than illumination; light is what makes a space beautiful, useful, and ultimately, enjoyable. Learn more at www.dmfluxury.com.



THE SECRET TO UNDERGROUND POWER TRANSMISSION



OUR WUNPEECE TRANSMISSION SPACERS REDEFINE THE INDUSTRY STANDARD FOR UNDERGROUND POWER TRANSMISSION INSTALLATIONS. WITH PRECISION ENGINEERING AND UNMATCHED QUALITY,

JOIN THE RANKS OF INDUSTRY LEADERS WHO TRUST UNDERGROUND DEVICES FOR THEIR POWER TRANSMISSION NEEDS.



VISIT WWW.UDEVICES.COM

AND EXPERIENCE THE FUTURE OF UNDERGROUND POWER INSTALLATION

Bridgeport Celebrates 100th Anniversary

Company Also Announces New Platinum-Level Partnership with electrical training ALLIANCE (etA) in Latest Milestone



Bridgeport is proud to announce it is celebrating its 100th anniversary as the trusted brand for electricians, contractors, and distributors, delivering innovative fittings and connectors that ensure professional reliability from line to load.

Marking yet another milestone, Bridgeport has also announced that it has entered into a new Platinum Level partnership with the electrical training ALLIANCE (etA), a major step forward in supporting the future of the electrical industry and reinforcing Bridgeport’s role as a leader in electrical solutions.

“For more than a century, Bridgeport’s legacy of quality, reliability, and innovation has made it the industry’s go-to choice,” explained Joe Saganowich, NSI’s Electrical Division President.

“With multiple manufacturing locations across the U.S., Bridgeport has delivered high-quality, precision engineered solutions with expert technical support. Our manufacturing capability and supply chain expertise continues to ensure a reliable supply, faster delivery, and consistent performance while offering versatile, high-performance solutions for any application.”

Since 1925, Bridgeport has achieved many milestones since its founding as the Bridgeport Switch Company in Bridgeport, CT:

- 1936: Shifted focus to electrical conduit and cable fittings

- 1954: Officially rebranded as Bridgeport Fittings
- 1960s-1980s: Expanded into EMT, rigid conduit, and ground fittings
- 1990s: Innovation boom, securing more than 170 patents
- 2000s: Launched signature solutions Mighty-Merge® transition fittings, E-Z Lock® connectors, and Mighty-Align® slip couplings
- 2019: Acquired by NSI Industries, expanding distribution and product innovation
- 2025: Celebrating 100 years of engineering excellence and professional reliability

“As well as celebrating the past, Bridgeport is also proud to support the industry’s future,” added Saganowich. “We’re not just donating products, we’re helping shape how electrical work is taught, practiced, and improved. By teaming up with the etA, Bridgeport has taken a leading role in shaping the future of the electrical industry, demonstrating a deep commitment to innovation, training, and long-term industry support.”

This training partnership goes beyond a title. It represents an opportunity for Bridgeport to actively contribute to how the next generation of electricians is trained. This initiative will support:

- Training programs across the country
- Curriculum development using Bridgeport products
- Instruction that emphasizes real-world

electrical applications

- Product donations to keep training centers aligned with current job site trends

“Partnering with a company like Bridgeport, which offers best-in-class solutions across the electrical industry, is a great feeling,” added Todd Stafford, Executive Director of the etA. “We will strive to represent them effectively to our students, the IBEW, and NECA. Each organization appreciates the value of these respected brands from their experience.”

Saganowich concluded, “For NSI, this collaboration strengthens the company’s presence among emerging electrical professionals while aligning with its long-term strategic goals. It’s a dual benefit...supporting quality and consistency in electrical practices while building brand recognition and loyalty with future electricians.”

The electrical training ALLIANCE is a nonprofit organization founded in 1941 (as the National Joint Apprenticeship and Training Committee (NJATC)) by the National Electrical Contractors Association (NECA) and the International Brotherhood of Electrical Workers (IBEW). The organization is committed to developing and standardizing education in the electrical industry to properly and effectively train members of NECA and the IBEW.

For more information, please visit nsiindustries.com/bridgeport/.

ABOUT NSI INDUSTRIES, LLC

NSI is focused on Making Connections in the electrical, network infrastructure, and HVAC markets, NSI connects distributors to products, services, and technologies by providing a fresh perspective and caring approach that drives smart solutions. The driving force behind a stable of market-leading brands and a large breadth of products, the company’s primary job for more than 45 years has been to fulfill the needs of distributors and their customers. By staying grounded in the principles of service and value, NSI continues to deliver high-quality, industry-advancing, and comprehensive product solutions that enable growth. NSI has many well-respected brands, including Bridgeport Fittings®, Polaris® Power Connectors, TORK®Timers and Controls, WarriorWrap® Professional Tape, TERMINATOR® Premium Wire Connectors, RHINO Safety™, Platinum Tools®, Metallics™ Fasteners, Remke Industries, Lynn Electronics, Duro Dyne® Sheet Metal Accessories and Supco HVAC Parts and Accessories. For additional information about NSI Industries and our family of brands, visit www.nsiindustries.com.



We’re Proud to be the Electricians’ Friend for Over 50 Years!

New Products

Safer Better Faster

IP19

4-Conduit Block

Vertical support from only one 1/4", 3/8" or 1/2" threaded or threadless rods 1/4" or 3/8" threaded holes on the side along with slots for hex head bolts for hardware are provided for conduit support.



IP21a

QwikBlock

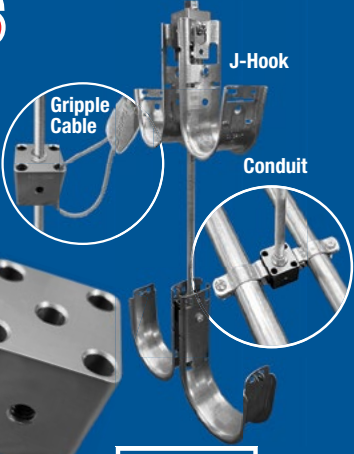
Vertical support from only one 1/4", 3/8" or 1/2" threaded rod by attaching two machine screws 1/4" x 20 thru the existing holes in back of the box. Eliminates knocking out center KO on box and traditional nut and washer method to support a single box.



IP20a

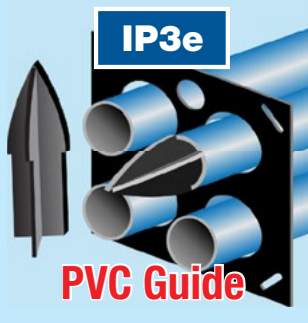
Box Support Rod Cubes

Vertical support from only one 1/4" or 3/8" threaded or threadless rod with 4 holes for Gripper applications as well as 4 threaded 1/4" or 3/8" holes for conduit support hardware.



IP3e

PVC Guide



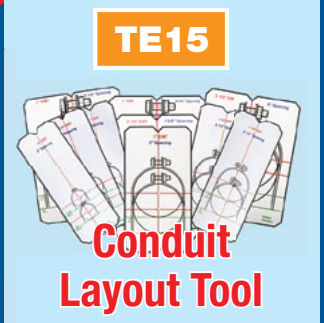
IP2b

PVC Driver



TE15

Conduit Layout Tool



IP3g

Long Slip PVC



IP3f

Slip PVC/RGD



IP4

EZ Raised Bracket



For more information visit our website at SPProducts.com

Plus More Being Invented for SAFER BETTER FASTER Jobs . . . Call With Your Ideas!

Leviton Acquires ArcArrest® Switch-Rated Pin & Sleeve Devices from Molex to Expand Industrial Portfolio

New product offering strengthens Leviton’s leadership in code compliance and safety

Leviton, a leading manufacturer of electrical wiring devices, lighting, data networks and energy management systems, today announced the acquisition of the ArcArrest® line of switch-rated pin & sleeve devices from Molex. This strategic addition strengthens Leviton’s position as a market leader in industrial connectivity and safety, while expanding the company’s existing portfolio of pin & sleeve solutions.

Designed for demanding industrial environments like food and beverage processing, power generation, mining, oil & gas and wastewater treatment plants, the ArcArrest line includes plugs, connectors, receptacles and inlets that provide safe, reliable means of disconnecting under load, helping improve safety and reduce downtime.

“At Leviton, we are committed to delivering best-in-class solutions for industrial environments, which is why we are excited to offer our customers the latest ArcArrest devices,” said Michael Mattei, executive vice president and general manager of the Commercial and Industrial business unit at Leviton. “The ArcArrest line provides our customers with more flexible, safe and code-compliant options for even the most demanding environments.”



- Key features of ArcArrest solutions include:
- UL1682 and UL2682 certified for both branch and motor circuit disconnects
 - Can be used to make and break electrical connections as a “line-of-sight” disconnect switch
 - No exposure to live components or arc flash, even when under load
 - Integrated lockout/tagout provisions in both plug and receptacle for fast

- OSHA compliance
- No need for separate wall-mounted disconnects, enabling greater flexibility and portability
 - Type 4X and IP69K rated for protection against dust, water and high-pressure washdowns
- The ArcArrest line will be available through Leviton’s distribution partners by the end of the year. □

ABOUT LEVITON COMMERCIAL AND INDUSTRIAL

Leviton’s comprehensive line of commercial and industrial-grade electrical wiring devices provides builders, contractors and specifiers with solutions engineered to withstand the most rigorous commercial environments and harshest industrial applications. Leviton manufactures everything from commercial, industrial and hospital grade wiring devices, to surge protective devices, electric vehicle supply equipment, temporary power solutions, heavy duty motor starter switches, IEC and NEMA watertight rated devices and more. Learn more at www.leviton.com/industrial.

ABOUT LEVITON

Every day, Leviton builds what’s next to light, power, and connect everyday spaces to meet the needs of its residential, commercial, and industrial customers globally. From controls, to lighting, to electrical, to networking, Leviton’s relentless innovation for more than a century enables our customers’ lives to be easier, safer, more efficient, productive and sustainable. Driven by its commitment to its customers, the ingenuity of its employees, and the safety and quality of its products and solutions, with Leviton, the FUTURE IS ON. For more information, visit www.leviton.com.

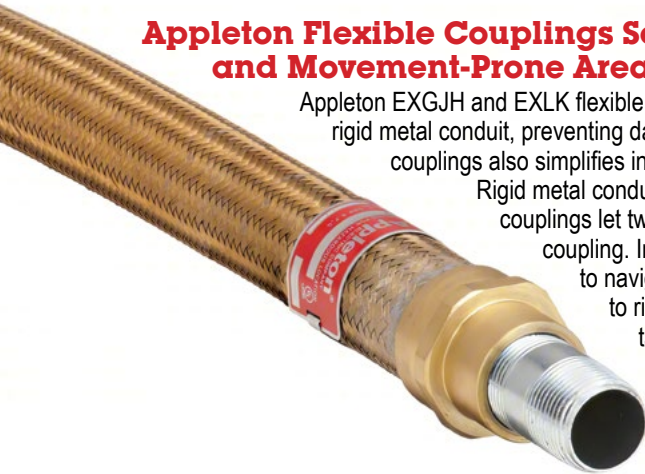


CANNON iK

ELIMINATE HAND PULLS & INCREASE JOBSITE EFFICIENCIES.



Appleton Flexible Couplings Securely Connect Rigid Conduit in Vibration and Movement-Prone Areas



Appleton EXGJH and EXLK flexible couplings accommodate vibration, movement and tight bends between sections of rigid metal conduit, preventing damage to the conduit and connected equipment. The modest 'give' allowed by these couplings also simplifies installation and alignment where rigid connections are difficult.

Rigid metal conduit, while strong, can't handle movement well. Appleton EXGJH and EXLK flexible couplings let two conduit sections move independently, unlike those joined by a standard rigid coupling. In difficult bend situations, they can safely be used as an alternative to rigid conduit to navigate around obstacles, corners or other structures. Electrical conductivity is equal to rigid conduit, meaning no external bonding jumper is required. Also, their accurately tapped threads ensure tight, rigid joints while the smooth, rounded integral bushings in each hub prevent damage to conductor insulation.

Although flexible, Appleton couplings have a heavy-duty design that resists mechanical abuse with a strong inner core and an insulating liner that protects wires from vibration-induced abrasion. The couplings are certified for NEC/CEC Class I, Division 2 (CID2) hazardous locations, qualifying them for areas where volatile flammable liquids, dusts or gases are handled, processed or used. Being

waterproof, the couplings are also suitable for wet locations.

To meet the widest range of demands, Appleton flexible couplings come in lengths from 4" to 36" and diameter sizes of 1/2" to 2" for versions with an outer bronze braid or 2-1/2" to 4" for models with an outer stainless steel braid. The EXGJH version has two female end fittings with male nipples, while the EXLK has a one male nipple and one removal union. Some versions also meet ATEX Certifications and Compliances.

For more information, visit www.appletonelec.com

Highly Configurable Adjustable Wall Flood Light Brings a Modern Solution to Safety and Security

Designed with a modern approach to elevate safety and security, the AMP® SECURE™ Adjustable Wall Flood Light boasts advanced built-in standard features, including a selectable wattage switch (2100 and 3500 lumens) and color temperature switch (3000K, 4000K and 5000K); an integrated photocontrol for dusk to dawn illumination; and 0-10 volt dimming to tailor the light output.

In addition, this versatile and highly configurable modern solution combines universal voltage (120-277V) with robust die-cast aluminum construction and a corrosion-resistant textured finish, making it ideal for commercial, industrial and residential applications. The Adjustable Wall Flood Light is IP66 rated and sealed with a silicone gasket, effectively sealing out moisture, dust, and other contaminants. The finish meets ASTM B117 standards for a minimum 1000-hour salt spray test, ensuring durability and longevity in harsh outdoor conditions, including wet locations.

The flood light's vertical adjustable knob allows for toolless adjustability of up to 135 degrees. Along with the conveniently located selectable lumen and color temperature switches on the exterior of the fixture, it allows for simply onsite adjustment to meet specific project requirements.

Featuring premium precision-engineered optics for wide NEMA 7x6 light distribution, the Adjustable Wall Flood Light's UV and impact-resistant polycarbonate lens provides uniform, low-glare illumination, improving visibility while minimizing light spill.

Designed for efficient, single-person installation, the flood light includes a universal mounting bracket with a bubble level, set screw, and an easy-install decorative plate. An integrated security tether frees hands for wiring, and the adjustable head offers 180° rotation with interlocking teeth for secure positioning, ensuring quick and reliable setup.

The 4kV built-in surge protection safeguards the fixture against electrical surges, enhancing reliability. The Adjustable Wall Flood Light is UL Certified and DLC Premium Listed for rebate eligibility.



For more information, visit www.amplighting.com

Affordable test equipment for 2025



Spitfire - Buried Low Voltage Cable Fault Locator

- ◆ Accurate
- ◆ Easy to use
- ◆ High energy output
- ◆ Proven reliability
- ◆ Compact design
- ◆ Lightweight

Wayfind'r - Impulse cable tracer

- ◆ Accurate
- ◆ Easy to use
- ◆ Connects directly to energized cables
- ◆ Distinct signal for easy tracing
- ◆ Traces direct buried and cables in conduit
- ◆ Rugged, compact design

Impulse Phaser - Cable / phase system

- ◆ Accurately identifies cables in trenches, vaults, conduits and enclosures
- ◆ Accurately identifies phases in multi-conductor cables
- ◆ Identifies jacketed, shielded, cables, even in pipe
- ◆ Easy to understand and use



TIMCO INSTRUMENTS, LLC

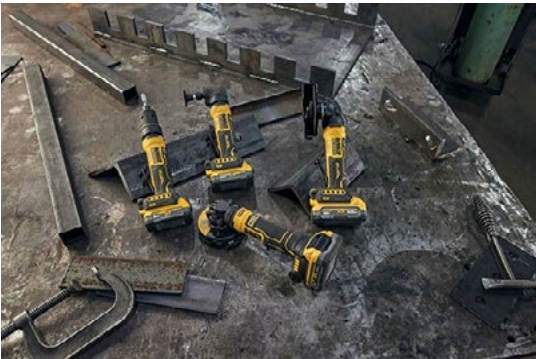
Phone: (401) 539-7120 Fax: (401) 539-6018
www.timcoinstruments.com



NEWPRODUCTS

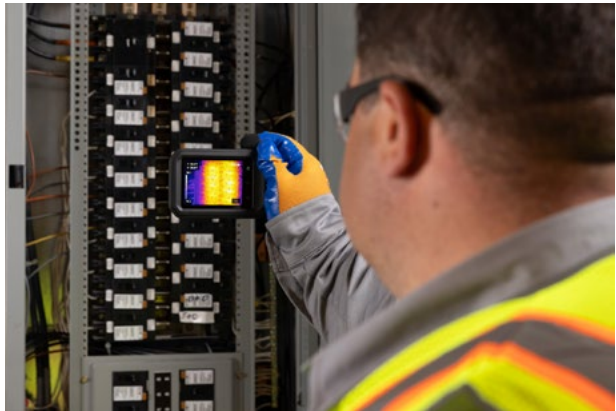
DEWALT's First Cordless 4 in. Angle Grinder Delivers Optimal Maneuverability in a Compact Size Without Compromising Power

- Designed for high performance and mobility in tight spaces, the new suite of DEWALT cordless grinders allows users executing demanding applications to transition from pneumatic to cordless
- The suite includes the ATOMIC™ 20V MAX* 4 in. Angle Grinder, 4.5 in. Angle Grinder, Die Grinder and Right Angle Die Grinder
- Product lineup will debuted at FABTECH 2025, one of the industry's leading events for sheet metal manufacturing, that took place in Chicago, September 8-11



DEWALT, a Stanley Black & Decker (NYSE: SWK) brand and leader in total jobsite solutions, introduces the ATOMIC™ 20V MAX* 4 in. Angle Grinder (DCG400), the first from the brand that provides high-power users the benefits of a cordless, compact tool without sacrificing performance. Additional products joining the ATOMIC™ 20V MAX* lineup include the 4.5 in. Angle Grinder (DCG402), Die Grinder (DCG420) and Right Angle Die Grinder (DCG422). The suite of grinders is designed for applications in confined workspaces and delivers more power than select HP rated pneumatic grinders without the need for hoses, or hassles of complex pneumatic setup. "The fabrication trades – particularly fitters and welders – perform some of the most demanding applications in the field, making cordless products that meet their performance needs highly advantageous," said Phil Bolton, Director, Product Management, DEWALT. "DEWALT is dedicated to meeting the needs of these trades through innovation and continuing to drive the adoption of cordless tools for safety, maneuverability, and productivity."

For more information, visit www.dewalt.com



Flir Unveils C8 Next-Generation Compact Thermal Imaging Camera for Faster, Clearer, and More Reliable Inspections

Electrical/Mechanical Maintenance, Building Diagnostics and Vehicle Inspection Professionals All Set to Benefit from the Rugged, Easy-to-Use Flir C8.

Flir, a Teledyne Technologies company, today launched the C8 thermal imaging camera, a new device set to enhance compact thermal diagnostics with high-clarity, rapid results. Improvements to the new-generation C8 include enhanced image quality, higher accuracy, improved sensitivity, and the addition of advanced reporting templates within Flir Ignite Pro.

Traditional thermal inspections can be slow, unclear, and hard to document, relying on manual processes that risk overlooking critical issues. The result of these inefficiencies can lead to higher maintenance costs, delayed repairs, and reduced productivity. The Flir C8 solves these challenges with a rugged, easy-to-use form factor that puts powerful, high-resolution thermography into the hands of users, ensuring accurate, efficient, standardized inspections. In addition, technicians can integrate FLIR Ignite Pro cloud connectivity and newly devised advanced reporting templates that not only streamline workflows and save time but also support easy collaboration.

Get a Clear View

New capabilities for the Flir C8 include 320 x 240 thermal resolution and 35° horizontal field of view to increase the number of pixels on the target and enhance image clarity. In combination with Flir's patented MSX® detail enhancement technology, sharp thermal images become the norm, in turn supporting faster fault and anomaly detection for more accurate diagnostics.

Users of our C8 can enjoy up to 40-50% quicker inspections, helping to cut labor and downtime costs, revealed John Gould, Director - Global Business Development - Condition Monitoring. Identifying faults faster and acting sooner reduces expensive outages and unplanned repairs, while confidence in consistent, reliable results is assured thanks to high resolution and high thermal sensitivity. Furthermore, isotherm alarms instantly highlight when temperatures cross set limits, helping users quickly identify potential issues.

For more information, visit www.flir.com/products/C8

Helping contractors build better business with Finance Resource Optimization

ARE FINANCIAL GAPS LIMITING YOUR GROWTH?

Do Any of These Sound Familiar?

- Unclear financial position or cash flow
- Pricing and profitability issues
- High turnover and staffing challenges
- Lack of key financial metrics
- Daily decision-making stress
- Trouble scaling
- Gaps in financial expertise
- Worry about the future and your legacy

If so, it's time for a better way forward.

DAAXIT CFOs Help Contractors Take Control of Their Financial Future

Through Fractional CFO services, we help contractors:

- Reduce risk
- Gain financial clarity
- Make smarter, more profitable decisions



Optimize your profits with the **DAAXIT Five Pillar Process**, where you'll streamline systems, uncover opportunities, and build a stronger, more resilient business — one that grows, lasts, and leaves a legacy.

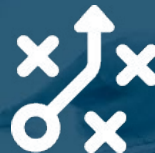
- 1 Core Values Alignment
- 2 Long-Term Shared Purpose
- 3 Complimentary Strengths
- 4 Positive, Intentional Communication
- 5 Scheduled Strategic Planning

Expert Financial Leadership for Contractors

Reduce risk and overcome the common pitfalls contractors face—including stagnation, retention problems, and financial decisions that could lead to bankruptcy. We'll help you build a growing, thriving business, inside and out.



CASH FLOW MANAGEMENT



FINANCIAL STRATEGY



FINANCIAL FORECASTING



BUDGETING



FOR MORE INFORMATION, CONTACT:
DAAXIT HEADQUARTERS
1511 Wilmot Ave.
Twin Lakes, WI 53181
info@daaxit.com
www.daaxit.com

“After only six months with **DAAXIT**, we had a streamlined financial system and had identified the areas where we were leaking and burning money. **DAAXIT** grew our bottom line by \$1.8M.”

—ERIC SMITH, EDGE ELECTRICAL SYSTEMS



SP PRODUCTS, INC.
Productivity and value thru ideas
FOR SAFER BETTER FASTER JOBS



Galvanized Rigid Transition Couplings to Schedule 40/80 PVC Stub-Up



Save at Least **1 Hour** per Installation.

When Concrete is Poured and Metal Below the Slab is Needed

Transitions in Less Than 5 Minutes!

Save Cost on the Rigid Nipple, Tape & Labor

Use for Entire Job - Not Just for Repair

See Our Conduit Plug
See page IP27c



See Our REAMING BITS for Transition Couplings



PATENT PENDING

See page IP15



Saves a great deal of time transitioning from PVC conduit to Rigid Conduit above slab without damaging PVC risers and chipping concrete eliminating a concrete repair job!

All SP Products Inc. Transition Fittings are manufactured for installation to either meet or exceed in accordance with NEMA TC2, TC3 or UL 651 specifications

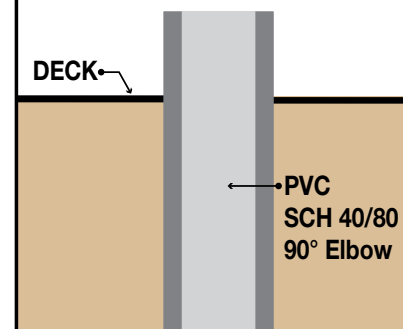
1/2" thru 6"

Transition Couplings

Size	Catalog #
1/2"	50-PVC-R-GRC
3/4"	75-PVC-R-GRC
1"	100-PVC-R-GRC
1-1/4"	125-PVC-R-GRC
1-1/2"	150-PVC-R-GRC
2"	200-PVC-R-GRC
2-1/2"	250-PVC-R-GRC
3"	300-PVC-R-GRC
3-1/2"	350-PVC-R-GRC
4"	400-PVC-R-GRC
5"	500-PVC-R-GRC
6"	600-PVC-R-GRC

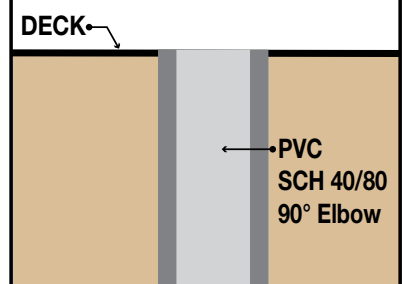
All Above Meet UL651
CSA C22.2, No.85 and
US Army Corps Engineers
Specifications

STEP 1



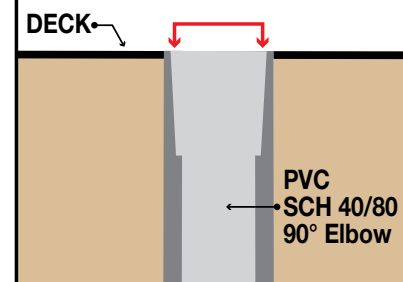
STEP 2

Cut SCH 40/80 PVC Elbow Flush to Deck



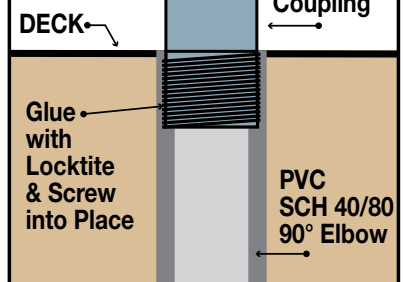
STEP 3

Ream out 1/2 of wall thickness SCH 40/80 PVC Elbow



STEP 4

Insert Galvanized Rigid Coupling



Customer must satisfy all codes and owners' specifications.

SP PRODUCTS, INC.
Productivity and value thru ideas



PATENT PENDING
PATENTED



LABELS APPLY TO PRODUCTS ONLY WHERE SHOWN ABOVE

730 Pratt Boulevard • Elk Grove Village, IL 60007

P: (847) 593-8595 • F: (847) 593-8629 • Toll-free (800) 233-8595

E: info@spproducts.com • www.spproducts.com

2024 NECA
ShowStopper
WINNER

NEWPRODUCTS

Gripple® Highlights Fast Trak®:
The Revolutionary Suspension System
Redefining Mechanical and Electrical
Installations

Delivering Unmatched Installation
Speed, Safety, and Flexibility for Modern
Construction Projects



Gripple®, a leading manufacturer of engineered suspension solutions for construction and critical infrastructure applications, is proud to highlight Fast Trak®, an innovative suspension system engineered to transform mechanical and electrical installations. Designed to streamline projects with speed, safety, and efficiency, Fast Trak® delivers industry-leading performance.

Fast Trak sets a new benchmark in installation speed, enabling installers to complete projects up to six times faster than traditional threaded rod or channel systems, reducing labor time and accelerating project schedules. The intuitively designed, prefabricated system eliminates the need to cut threaded rod or channel on-site, significantly minimizing injury risk and simplifying on-site labor requirements for safer project environments.

Engineered for on-site flexibility, Fast Trak's tool-free adjustment allows the bracket to glide smoothly up and down the tracks, allowing installers to make on-the-fly positioning changes without additional tools. The track bends neatly under the bracket or excess track can be snapped off after leveling for a streamlined finish.

Fast Trak features a distinctive four-sided bracket providing full flexibility for trade attachments on any side of the bracket. This versatile configuration makes Fast Trak an all-in-one support solution, making multi-tiered trapeze installations faster, cleaner, and more flexible. User-friendly measurement indicators at each end of the bracket simplify ceiling marking, and level markers on the tracks at every 2 1/4-inch increment make leveling fast and precise.

The entire system is designed for streamlined on-site logistics, reducing storage needs and ensuring a neat, organized workspace from start to finish. Brackets are pre-sized and prefabricated; so, storage and cutting (hot works) of large, 10-foot sections of strut or rod is necessary. Fast Trak systems are packed in compact boxes with integrated handles for ease of storage and movement around job sites.

Fast Trak accommodates working loads up to 650 lbs., meeting the demands of mechanical and electrical services. Fast Trak is available in multiple bracket and track lengths, enabling contractors to tailor installations to specific site requirements and space constraints. The system supports both uniformly distributed loads (UDL) and single-point loads (SPL) in diverse bracket and orientation combinations, ensuring broad applicability across mechanical and electrical projects.

For more information, visit
www.gripple.com

Multi-Wattage & Color Selectable Omni-Bulb & Plug-In VL Lamps

Energy-Efficient Replacement for CFL & Incandescent Bulbs

HyLite introduces its new Multi-Mode 8-15W LED Omni-Bulb & Plug-In VL Lamp, an innovative "Type A" (ballast-compatible) and "Type B" (ballast-bypass, direct wire) lamp designed to replace up to 36 models of traditional lighting, including 18W-42W CFLs and 75W-150W incandescents. With multi-wattage (8W-10W-12W-15W) and color selectable (27K-35K-40K-50K) options, this bulb adapts to your specific lighting needs. This versatile bulb offers significant energy savings of 56%-62% for CFL replacements and up to 90% for incandescent bulbs, along with a prolonged lifespan of up to 50,000 hours, drastically reducing maintenance and relamping frequency.

This product addresses the long-standing challenge of compatibility and offers a single, highly efficient solution for both CFL & incandescent replacements, ultimately saving our customers time, money & hassle.



Key Features:

- Multi-Wattage & Color Selectable: All in 1
 - 8W-10W-12W-15W
 - 2700K-3500K-4000K-5000K
- Up to 90% Savings on Your Energy Costs
- Universal Voltage: 100-277VAC
- Plug N' Play: Direct Install with or Without Ballast
- Horizontal and Vertical Mount Sockets
- Rated up to 50,000 Hours of Lamp Life
- Energy-Efficient Illumination: 120 LpW
- Reverse Phase & 0-10V Dimmable
- 360° Illumination

For more information, visit
www.HyLiteLEDLighting.com

AUTHORIZED
DISTRIBUTOR OF



Cementex
The Safety Tool Specialists

Deluxe Geared Maintenance Tool Kit

Cementex Double-insulated Tools:

- Comply with the IEC 900 standard
- Comply with ASTM F1505-01 standard
- Help you meet requirements of OSHA Safety Related Work Practices, NFPA 70E Standard and CSA-Z462

Cementex Double-insulated Tools are:

- Tested to 10,000 VAC and rated for 1,000 VAC when working on live parts
- Manufactured in the USA with domestic and global materials.
- Marked with the international safety symbol - (double triangle) 1000V

Class 00 Arc Flash Glove Kit

Class 00 arc flash glove kit from Cementex is a good option for a reliable kit for work with 500 Volts or less. The gloves are made of natural rubber construction, offering the required dielectric properties combined with flexibility, strength, and durability. Gloves feature rolled cuffs, and are anatomically shaped thereby reducing hand fatigue. Each glove is chlorinated for maximum comfort.

Components of Cementex IKG00-11 glove kit:

- 11" long Class 00 rubber insulating gloves
- Leather protectors
- Canvas storage bag



CALL US TODAY
(703) 367-0404

OR VISIT OUR ONLINE ELECTRICAL SAFETY EQUIPMENT STORE
www.electricalsafetysupply.com

LEDVANCE Launches New Hazardous Location Luminaire Portfolio for Extreme Environments

Explosion-proof High Bay, Linear, Floodlight, and Jelly Jar fixtures deliver reliable, high-performance lighting solutions for oil & gas, utilities, and other industrial safety-critical environments.

LEDVANCE, a global leader in lighting solutions, has launched its first comprehensive Hazardous Location LED Luminaire portfolio, engineered for use in extreme, high-risk industrial settings throughout North America.

This debut marks LEDVANCE's formal entry into the hazardous location lighting market, offering a full range of UL844-certified solutions that emphasize safety, durability, and reduced maintenance for critical operations.

Safety and Quality Without Compromise

Certified to UL844 and CSA 22.2 No. 137, the new luminaires are engineered to perform in Class I, Division 2; Class II, Divisions 1 & 2; and Class III hazardous environments. With IP66 and IK08 ratings and lifespans up to 100,000 hours (L70), LEDVANCE Hazardous Location Luminaires offer long-term durability and peace of mind in oil and gas refineries, wastewater treatment plants, power facilities, shipping terminals, and other high-risk settings.

"With this launch, LEDVANCE customers now have access to a fully integrated hazardous location portfolio backed by our proven brand reputation for quality and reliability," said Ligia Orlandini, Product Manager at LEDVANCE. "From high-output floodlights to compact Jelly Jars, we're enabling safer, more efficient operations across the most demanding industries."

For more information, visit www.ledvance.com



New Matter-Enabled Smart Lighting Solutions are Available as Part of the radiant® Collection by Legrand

Design and functionality come together to achieve a comfortable, cohesive, and smart living experience

Legrand®, a global leader in electrical and digital infrastructure, is continuing to deliver solutions that provide a smart, more comfortable, and controlled living space. The 2nd generation of radiant® Smart Lighting with Wi-Fi is now available with the new industry-unifying smart home standard, Matter. Each device is Matter-enabled so that

devices from different brands can work together across various smart home platforms without the need for complicated plugins or extensions.

radiant® Smart Lighting with Wi-Fi key product features include:

- **Seamless Installation and On-Boarding**
 - Each device comes with a unique Matter QR code for simplified onboarding with a smart home platform of choice (requires Matter-compatible hub)
- **Convenience and Compatibility**
 - Pair with a Matter-compatible hub – including Amazon Alexa, Google Home, Apple Home, and Samsung SmartThings
- **Remote Control**
 - Control devices from a smartphone or voice assistant
 - Matter-enabled devices can still be controlled without an internet connection if the home's Wi-Fi network is still accessible
- **Great Design**
 - Mix and match with existing, non-connected, devices from the radiant collection that feature the same great look and feel
- **Safety & Energy Savings**
 - Create automations that help manage lighting throughout the day when needed or by turning off unused plugged-in devices
 - Schedule lights to turn on automatically when it's dark, whether you're arriving home late, walking through hallways, or creating the appearance that someone's home

For more information, visit www.legrand.us/matter

DON'T MISS OUT!

Does your product help to increase profits or improve safety and overall working conditions for the electrical contractor?
If so, don't forget to submit your product for nomination as one of *Electrical Products & Solutions'*

“TOP PRODUCTS OF 2025”

All the winners will be featured in our December issue.



Deadline: December 5, 2025

Requirements:

Submit a high resolution photo (300 dpi) of your product, along with a brief description (up to 150 words). *Please note on your submission that it is for consideration for Top Products of 2025.*

E-mail: danny@epsmag.net

or mail to: Electrical Products & Solutions

2009 Eagle Ridge Drive, Birmingham, AL 35242


ADVERTISER INDEX


This advertiser index is compiled as a courtesy to our readers. While every effort is made to provide a complete and accurate listing of companies and page numbers, the publisher is not responsible for errors. **Click the company name or page number to see their advertisement.**

Company	PG#	Company	PG#
APPLETON / EMERSON	13	MILLER SAFETY CONSULTANTS LTD	7
APPLETON / EMERSON	15	MILLER SAFETY CONSULTANTS LTD	29
BASETEK, LLC	5	SP PRODUCTS INC	1
CONDUIT REPAIR SYSTEMS	4	SP PRODUCTS INC	19
DAAXIT, INC	25	SP PRODUCTS INC	26, 27
iTOOLco	IFC	SP PRODUCTS INC	BC
iTOOLco	21	TIMCO INSTRUMENTS	23
iTOOLco	IBC	UNDERGROUND DEVICES	3
KNOCK'ER-IN	11	UNDERGROUND DEVICES	17
KRENZ & COMPANY	32		

When it comes to transformer cooling fans, Krenz-Vent is the industry recognized gold standard. Our leadership position is earned through 80+ years of R&D plus our superior engineering and customer service. You can rest easy when you specify Krenz fans.

ENGINEERED TO COOL
There is no comparison.



**KRENZ & COMPANY, INC.**

KRENZVENT.COM • 262.255.2310 • KRENZ@KRENZVENT.COM

ALL THE INFORMATION YOU NEED IS JUST A CLICK AWAY AT **WWW.EPSMAG.NET**



Transition Couplings
PVC Bell End Adapter
Galvanized Rigid Conduit - 1/2" thru 6"

HOMEARTICLESNEWSVIDEOSPRODUCTSSUBSCRIBECONTACT

Warming Up to Electrical Heating Cables

TOP PRODUCTS 2022

Fire Signal

WHAT'S NEW

Conduit Repair Systems, Inc.
The World Leader in Split Conduit Products

EPS Magazine in Your Inbox

DMF Lighting Expands its M Series Commercial Collection with High Lumen Packages for Hospitality and Mix-Use Spaces

New Multi-Tester from Klein Tools® Combines Core Electrical Products into One Model

HPS Launches SineWave Filter To Safeguard Motor and Cables

CORDLESS
CANNON 6K

iTOOLco.

WWW.iTOOLco.com | 865.670.3713

Speed, versatility, and performance are all yours with iTOOLco's Cordless Cannon 6K™. This portable 6,000 lb. puller is intuitively designed to handle all of your day-to-day wire pulls.

The built-in capstan switch automatically turns the puller on and off. Simply tug on the rope to start the pull and slack off the rope to shut it down. Delivers dynamic performance in remote locations or areas where power is not yet available.

32 | Electrical Products & Solutions | SEPTEMBER 2025



SPPRODUCTS, INC.

Productivity and value thru ideas
FOR SAFER BETTER FASTER JOBS

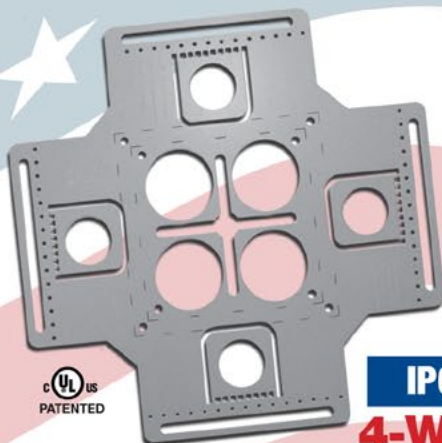


We're Proud to be the Electricians' Friend for Over 50 Years!

IP5

"The Original"

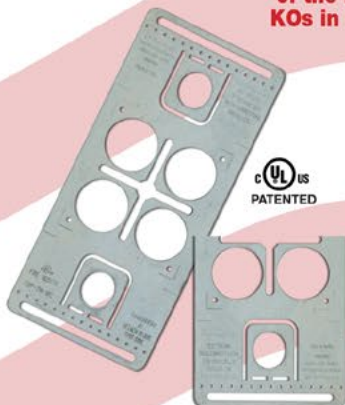
Enter Any KO on Both Sides of the Box



IP6

4-Way

Enter Any KO on All 4 Sides of the Box Plus 4 Large Open KOs in Center Allows Entering Back of Box



IP6a

2-Way/Half

Enter Any KO on 1 or 2 Sides of the Box Plus Large Open KOs in Center Allows Entering Back of Box



IP19/20

4-Conduit Block
PATENTED



IP21a

QwikBlock
PATENT PENDING

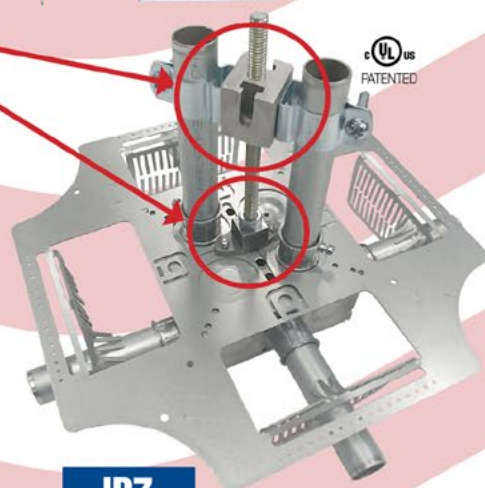
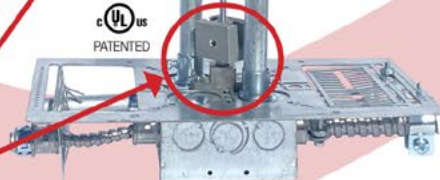
Use 4-Conduit Block (IP19 or IP20) with QwikBlock (IP21a)

Our Family of Conduit & Box Support Plates Saves Valuable Time & Money!

IP6d

2-Way

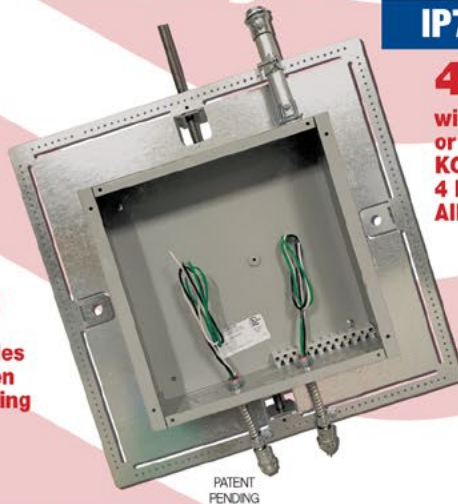
with Split Fingers for Horizontal or Vertical Installation



IP7

4-Way

with Split Fingers for Horizontal or Vertical Installation. Enter Any KO on All 4 Sides of the Box Plus 4 Large Open KOs in Center Allows Entering Back of Box.



PATENT PENDING

IP8

Mount Horizontally or Vertically from One Single Support

20 x 20

Supports up to 12 x 12 J-Box

28 x 28

Supports up to 20 x 20 J-Box

MADE IN THE USA!

Plus More Being Invented for **SAFER BETTER FASTER** Jobs . . . Call With Your Ideas!

SPProducts.com **800-233-8595** info@SPProducts.com