



Electrical

Products & Solutions™

The Purchasing Guide for Electrical Contractors

JANUARY 2026

www.epsmag.net

The Lighting Trends That Keep Delivering:

A Conversation with Scott Ziegenfus, Current

CANNON 12K

**THE TOUGHEST
WIRE PULLER YOU'LL EVER USE!**

EXTRA EXTENSIONS:
giving you up to 13' of wire from the conduit opening.

SIX SPEEDS:
Dual capstans with 3 speeds on each AND reverse gear!



12,000 Lb. pulling capacity.



Dual capstans with a 3 speed motor.



Overhead, underground and side pull capabilities.

We're Proud to be the Electricians' Friend for Over 50 Years!

**NEW
PRODUCT!**

IP10a

EZ STUB-UP

Join two EZ Stub-Ups with strut to support and secure multiple stub-ups on wooden forms before concrete pour for sizes 1/2", 3/4", 1" & 1-1/4" stub-ups with SP's Nylon Support Brackets and transition to RGB with our transition couplings.

IP1

Qwik Duct Safer Better Faster

**IP3b
IP3c**

HDPE CUSTOM TEMPLATES
In Any Configuration Required



Patent Pending

PVC Offset

Sizes 1/2" thru 6"
Meets Flexible Madrel Test Requirements

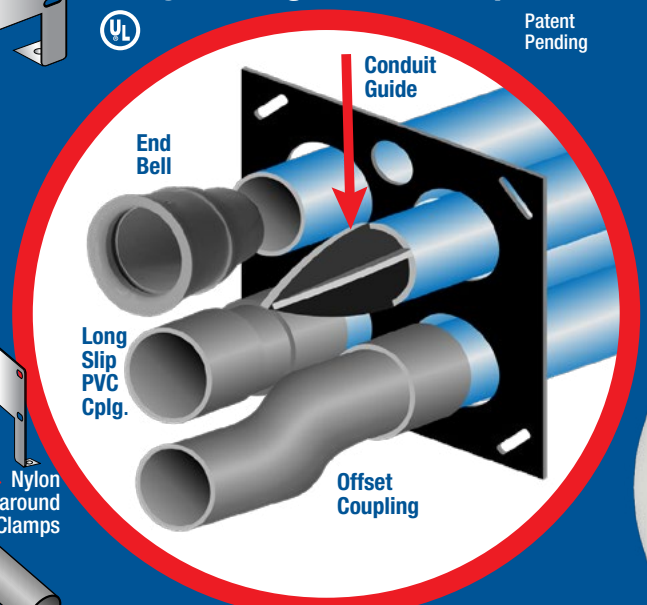


Patent Pending

Bore Spacers

Sizes 1/2" thru 6"
Roll assembled conduit into caissons and under obstructions

IP2a



Transition Couplings

Strut

Long Slip PVC Cplg.

Offset Coupling

Nylon Wraparound Clamps

IP13a-p

Conduit Transition Couplings



PVC schedule 40 & 80

Patent Pending

*Transitions in Less Than
5 Minutes*



IP3a

End Bell Adapter

Schedule 40/80 PVC



Patent Pending

PVC/Liquidtite

PVC/MC Cable

PVC/EMT

PVC/PVC

PVC/Stainless

PVC/Aluminum

Bell End/Rigid

PVC Slip/Rigid



IP15

1 Piece Reaming Bit

1/2" thru 6"
Schedule 40/80

Patent Pending

Save Cost on the Rigid Nipple, Tape & Labor
Use for Entire Job - Not Just for Repair

Plus More Being Invented for SAFER BETTER FASTER Jobs . . . Call With Your Ideas!

Electrical Products & Solutions™
issue sponsors



COMPANY PROFILE

6 Protect Yourself
Miller Safety Consultants —
A Leader in Arc Flash Protection
BY VINCENT MILLER

COVER STORY

8 The Lighting Trends That Keep Delivering
A Conversation with Scott Ziegenfus, Current

DEPARTMENTS

- 14** INDUSTRY NEWS
- 22** NEW PRODUCTS
- 32** AD INDEX

ON THE COVER

Photo courtesy of Current



PUBLISHER
Danny J. Salchert

OFFICE MANAGER
Anita Salchert

CREATIVE DIRECTOR
Derek Gaylard

CONTRIBUTING WRITER
Vincent Miller

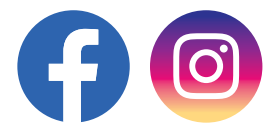


PRESIDENT
Danny J. Salchert

EXECUTIVE AND ADVERTISING OFFICES
2009 Eagle Ridge Drive
Birmingham, AL 35242
phone: 205.981.4541
www.epsmag.net
danny@epsmag.net

Electrical Products & Solutions™ is published twelve times a year on a monthly basis by ABD Communications, Inc., 3591 Cahaba Beach Road, Birmingham, Alabama, 35242, USA. *Electrical Products & Solutions™* is distributed free to qualified subscribers. Non-qualified subscription rates are \$57.00 per year in the U.S. and Canada and \$84.00 per year for foreign subscribers (surface mail). U.S. Postage paid at Birmingham, Alabama and additional mailing offices. *Electrical Products & Solutions™* is distributed to qualified readers in the electrical contracting industry. Publisher is not liable for all content (including editorial and illustrations provided by advertisers) of advertisements published and does not accept responsibility for any claims made against the publisher. It is the advertiser's or agency's responsibility to obtain appropriate releases on any item or individuals pictured in an advertisement. Reproduction of this magazine in whole or in part is prohibited without prior written permission from the publisher.

FOLLOW US ON



FINALLY, A TOOL YOU CAN TAKE TO THE BANK!



We didn't change the art:
We made it
safer and more efficient.



FOR MORE INFORMATION CONTACT:
INNISFREE TOOLS, LLC
info@innisfreetools.com

REPAIR CONDUIT IN A SNAP!

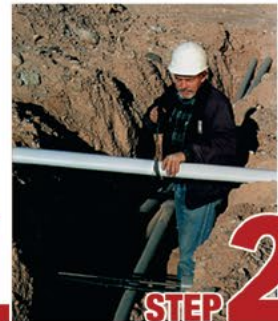
No Tape • No Plastic Straps • No Metallic Straps

NO KIDDING!

Designed especially for power, communications and fiber optics.



Remove damaged conduit



Cut split duct conduit to fit



Snap in place

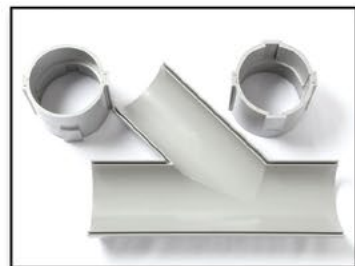


Attach adapters



Finish job in record time

"The World Leader In Split Conduit Products"



Conduit Repair Systems, Inc.
The World Leader In Split Conduit Products



800.670.1804 • 435.673.8724 fax • crs@conduitrepair.com • www.conduitrepair.com

BASETEK

ZANITE PLUS POLYMER COMPOSITE
A base you can build on.

Call us today **877.712.2273**

PRECAST POLYMER HOUSEKEEPING PADS

- **Customized** to fit your exact project
- **4X Stronger** than traditional concrete pads
- **Rapid Installation** and Labor Savings
- **Stainless Steel** inserts for mounting equipment to the pad
- **Counter Bore** anchoring to existing concrete
- **Excellent** Corrosion Resistance
- **Flexibility and Options:**
 - Bottom access
 - Exact sizes
 - Dedicated handling and lifting



SET YOUR PRECAST POLYMER PAD AND MOUNT YOUR EQUIPMENT THE SAME DAY!

GO GREEN
environmentally friendly

Reuseable — just unbolt and move

For more visit
basetek.com or
info@basetek.com



Proudly
made in the
U.S.A.

Built to last
and outperform.

We guarantee it.

©2025 BaseTek, LLC.

Zanite Plus is a registered trademark of BaseTek LLC.

Protect Yourself

Miller Safety Consultants — A Leader in Arc Flash Protection

Vince Miller started Miller Safety Consultants, a veteran owned business in 1999. The goal of the business was to provide cost effective safety consulting, employee training such as: confined space entry, fall protection, electrical safety and provide sales of electrical shock and flash protective equipment and fall protection equipment to businesses in the Washington DC area.

Reliance Industries provided fall protection products and much of the sales and training was on behalf of the supplier. In 2000, the owner decided to retire from his business, and Vince decided to discontinue the fall protection line of his business and concentrate more in the electrical training and products.

Vince had been a distributor for Certified Insulated Products (CIP), a manufacturer of electrical insulated tools and electrical arc flash clothing manufactured by Otex in Rochester, New York. As a distributor, Vince provided sales through his internet website and much through relationships with electrical contractors. His training was a classroom environment and was provided directly to customers but he also taught as a sub-contractor for other safety consulting companies and the

Chesapeake Safety Council in Baltimore, Maryland. In 2005, Vince partnered with Vivid Learning Systems in Cascades, Washington to provide on-line training in safe work practices.

Training in electrical safe work practices is still provided locally in the Washington DC area and as a partner with an electrical engineering firm and online. The training is based on the Occupational Health and Safety Administration (OSHA) standards and the National Fire Protection Association (NFPA) 70E standard.

Miller Safety Consultants is now a distributor for Cementex USA, Burlington, New Jersey, for insulated tools and equipment and clothing from OTEX Protective, Rochester, New York.

The majority of his sales of products

are from the web-based store. Cementex is nationally known for their quality equipment. Otex Protective is becoming more known for their quality clothing. For years, they have manufactured their products under other provider labels. Vince chose to not create his clothing line, but to sell the manufacturer product.

Vince has worked with many electrical company employees to fine-tune the clothing to be more comfortable for the user. Working closely with the manufacturer, they have made slight changes in how the cloth pattern was modified to meet final production. An example is the lightweight 40 Calorie vented hood offered by Otex.

The material is of the latest technology. The vented assembly is constructed for balance on the back of the hardhat and the airflow is 27 CFM to prevent fogging of the face shield and provide cooling to the worker. It took over a year to develop the product with the user prior to having the hood “flash tested”. This product is now standard issue with many electrical contractors.

Being a small business and having quality providers has resulted in satisfied customers for Miller Safety Consultants. Being a direct supplier for OTEX Protective, another small business means customized customer needs can be met. □

For more information, visit
Miller Safety Consultants at:
www.electricalsafetytysupply.com, email
Vince at: sales@millersafetyltd.com.

AUTHORIZED
Cementex
The Safety Tool Specialists
DISTRIBUTOR

Give Vince a call at
(703) 367-0404



Deluxe Maintenance Tool Kit



Class O Glove Kit

Protect yourself from "Arc Flash"



We offer two lightweight 40 cal rated systems for employee protection -
PYRAD® Technology by GORE-TEX LABS, single layer and the two layer **HYBRID (Protera/Indura)** models.
Our unique **ION-1** ventilation system uses Milwaukee's M12 battery and the **ION-2** ventilation system uses an internal rechargeable battery and variable speed control.



Both lift hoods feature 25+ CFM ventilators. Adding the patented arc flash sensor automatically disconnects the fan power to stop the air flow and maintain a safe breathing zone within the hood.



CALL US TODAY
(703) 367-0404

OR VISIT OUR ONLINE ELECTRICAL SAFETY EQUIPMENT STORE
www.electricalsafetytysupply.com





The Lighting Trends That Keep Delivering:

A Conversation with Scott Ziegenfus, Current

Plenty of ideas come and go, but some lighting control technologies prove their worth in day-to-day building operations. Occupancy sensing, system integration and software-driven intelligence aren't just sticking around but expanding, evolving and becoming the backbone of smarter, more efficient buildings.

We sat down with Scott Ziegenfus, Vice President of Technical Customer Experience at Current, to get his take on which lighting control technologies are living up to the hype and where they're headed next. With over 30 years in the industry and a leadership role on the BACnet Committee, Scott has a clear view of what's working, why it matters, and how we can use lighting

infrastructure to build more intelligent spaces.

Q: Thanks for chatting, Scott. You've seen a lot of lighting trends come and go, but which ones do you think have truly proven their staying power?

A: Some technologies have certainly faded while others became expectations, and occupancy sensing definitely falls into that second group. The original pitch was all about turning the lights off when nobody's in the room to save energy, and that's still important, but now it's a baseline feature that people largely expect.

What's changed is that the data these sensors collect is being used for more than lighting. It's feeding HVAC systems,

informing space management decisions and even shaping how facilities allocate square footage. Its footprint matches human movement, and that's exactly why lighting has become a core piece of smart building infrastructure.

Another one that's held up really well is daylight harvesting. It's the idea that if you've got sunlight coming through the windows, then you don't need the lights running at full output, so the system dims automatically to balance natural and artificial light. This kind of control was once a hallmark of LEED designs mainly, but now it's showing up in everyday buildings that are trying to meet the latest codes. Like with occupancy controls, it's become something people rely on without realizing it.





A suite of devices from sensors to switches to mobile apps is supporting flexible, wireless-enabled lighting management in commercial spaces. Current's NX platform is an example of how lighting controls are evolving to respond dynamically to changing conditions.

Q: You mentioned lighting feeding other systems. Can you give an example of how this supports a more connected, intelligent building?

A: Certainly, and one way to see it is by looking at how system integration has progressed. Let's say someone swipes their badge to enter a building. That single action can turn on the lights, adjust the thermostat or unlock a door all because those systems are now working together.

It's the same thing in emergencies. When a fire alarm goes off, lighting should guide the way out, and HVAC should shut down automatically. These aren't isolated systems anymore, and lighting is often the system that enables this collaboration, because it's already distributed throughout the entire building. It's on the grid, and it's powered, and it's connected.

So now we're seeing lighting become a data and infrastructure platform, not just a delivery mechanism for light.

Q: How does lighting data also factor into smarter decisions about space usage and layout?

A: This is one of the most exciting applications, honestly. Sensors embedded in lighting are already tracking when spaces are occupied, for how long and by how many people. That gives facility managers real-time insight into how the building is used.

You might realize, for example, that a

large conference room only ever hosts a few people at a time. Or that one room hasn't been used at all in weeks. That's powerful. It helps you optimize layouts, reduce wasted space and adjust HVAC and lighting schedules to reflect real behavior, not assumptions.

Lighting makes that possible because it's in every room, over every desk and it already has the hardware to monitor what's happening.



Digital lighting control platforms allow contractors and facility managers to visualize, configure and fine-tune system layouts in real time.

The Heavy Duty Nonmetallic CABLE RACK

For Power and Communications Manholes And Vaults



PRODUCT FEATURES:

- High Load Capacity
- Will Not Rust or Corrode
- No Grounding or Bonding
- Insulators Not Required
- Excellent Dielectric Properties
- Molded from UL Listed Glass Reinforced Polymer



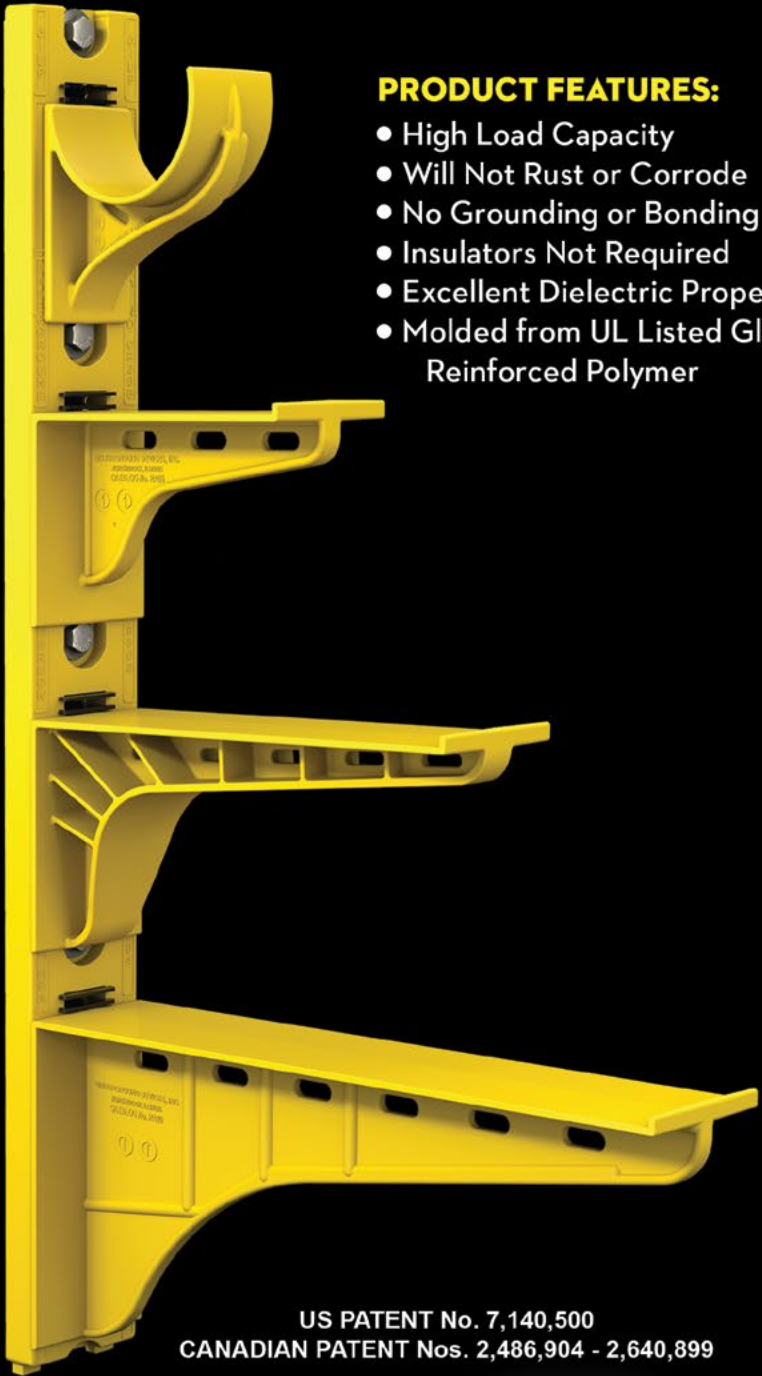
HDL Arm Lock shown with RA04 Arm and CR36-B Stanchion



3HDS - 3" throat saddle shown with a cable secured by cable ties.



RA08 - 8" arm shown with three cables secured by cable ties.



US PATENT No. 7,140,500
CANADIAN PATENT Nos. 2,486,904 - 2,640,899

UNDERGROUND DEVICES
INCORPORATED



420 ACADEMY DRIVE
NORTHBROOK, IL 60062
Phone: 847-205-9000 • Fax: 847-205-9004
Website: www.udevices.com

Q: What about software? How has that changed the game?

A: It used to be all about hardware—wall switches, dimmer panels, control boxes. But today controls increasingly are software-defined. It’s about how systems analyze data coming from sensors and then act on it.

We’re moving toward a world where lighting doesn’t just respond but learns and even predicts. It tells other systems what’s going on and lets them adjust in kind. That’s where building-wide optimization comes from.

And again, lighting is central to that because it already touches every space. You’re not adding a new device, rather, you’re just unlocking the intelligence inside the ones already installed.

Q: Is there a standard or framework making that kind of interoperability possible?

A: Definitely. I’ve been working with the BACnet Committee for over 16 years, and I’m actually about to step in as Chair. It will be the first time someone from the lighting world leads the committee that has traditionally been HVAC-dominated.

BACnet is the communication protocol that lets building systems talk

to each other. What makes it powerful is that it’s an open standard. Anyone can use it and right now, we’ve got over 1,500 manufacturers worldwide who’ve built BACnet into their devices.

One of my goals as Chair is to simplify the standard. Currently it’s a 1,600-page document—great content, but it can be overwhelming, especially for new engineers or smaller players in the space. If we can make it easier to implement, we’ll see even more systems integrate effectively.

Q: How does all of this tie into sustainability efforts?

A: Lighting and controls have already done a lot for sustainability. LED retrofits and occupancy sensors have delivered real energy savings for years now. But the next phase is about smarter coordination between systems.

Take a room that gets a lot of afternoon sun. You could cool it with A/C—or you could lower the shades. Which one uses less energy? If those systems are communicating, you don’t have to guess. The building adjusts itself intelligently.

Or let’s say a space only gets used two days a week. Do you need to run HVAC the other three? Probably not, but you won’t know that unless the

system tracking occupancy shares that info with HVAC. And chances are good that information came from a sensor embedded in a light.

So no, lighting isn’t a sustainability protocol. But it enables sustainability by giving other systems the insight they need to reduce energy use effectively.

Q: With all that said, what do you think is next for lighting controls?

A: That’s the fun part because we’re still figuring it out. But I can tell you this: Lighting is in a unique position. Because it’s everywhere. Over every space. It already has a power source. Already has a network connection. Already has sensors installed.

So, the question becomes: What else can we do?

We are seeing lighting fixtures become platforms for all kinds of building intelligence like asset tracking, environmental monitoring, people counting and even real-time wayfinding because the foundation is there. It’s just a matter of deciding on the ways in which we want to build on it.

And that’s what makes this industry so exciting right now. The trend that’s sticking is lighting that enables smarter decisions across the board. □

We are seeing lighting fixtures become platforms for all kinds of building intelligence like asset tracking, environmental monitoring, people counting and even real-time wayfinding because the foundation is there.



About the Expert

Scott Ziegenfus is Vice President of Technical Customer Experience (CX) at Current, where he helps align connected lighting systems with evolving user needs and building automation technologies. A 30-year veteran of the lighting industry, Scott serves as Chair-elect of the global BACnet Committee and is a recognized authority on lighting controls, system integration and building standards.



Appleton™ IJL LED Series Luminaires

Versatile and Adaptable Illumination for Any Environment

Appleton™ IJL LED Luminaires by Emerson are the premier jelly jar LED luminaires for industrial locations that offer versatile and adaptable illumination. With user selectable technology, they allow users to choose from a range of correlated color temperatures (CCT) and/or lumen outputs. Our engineers have developed specially designed optics that provide optimal light distribution – including uplight. The IJL LED Luminaires offer multiple mounting options such as wall, ceiling, and pendant, with an adjustable arm that allows precise rotation in 10° increments from 0° to 90°.

Learn More at: www.masteringled.com



The Emerson logo is a trademark and a service mark of Emerson Electric Co. © 2024 Emerson Electric Co.



City Electric Supply (CES) Expands California Footprint to 18 Branches

CES recently celebrated the grand openings of two branches, CES Costa Mesa and CES Placentia.



Mesa’s business community, and we’re proud to welcome them.”

For CES Costa Mesa Branch Manager Michael Collier, the opening of the branch marked a significant milestone that he and his team had been working toward. “It was incredible to finally reach this milestone and see our vendor partners and customers come together to celebrate our grand opening,” said Collier.

“We’re building strong relationships in the community and are ready to support our customers with the products and services they need to get the job done—they can rely on us,” said Collier. Since the grand opening, he said CES Costa Mesa has seen an increase in customer activity and has welcomed new contractors to the branch.

Likewise, for CES Placentia Branch Manager Emilio De La Torre, the celebration marked both the culmination of months of preparation and the beginning of a new chapter for the branch.

“It was great to see all of our hard work come together at the grand opening,” said De La Torre, who noted the strong foot traffic from contractors, vendors, and neighboring businesses throughout the day. Looking ahead, De La Torre said his focus remains on building strong, positive relationships.

“We look forward to serving our customers,” he said. “We’re excited to connect with the community and help support different sectors, including commercial, residential, and industrial project needs in Placentia.” □

City Electric Supply Costa Mesa
1387 Logan Ave.
Costa Mesa, CA 92626

City Electric Supply Placentia
1000 S. Richfield Rd.
Placentia, CA 92870

City Electric Supply (CES) recently hosted grand opening events for new two branches, CES Costa Mesa and CES Placentia, expanding its California footprint to 18 locations. The locations are situated just over 17 miles apart, enhancing support for both existing and new customers across commercial, industrial, and residential industries.

Orange County District Manager Brian Andringa said both locations were strategically chosen for their proximity to major freeways and their ability to support the fast-growing communities in the region.

“The Costa Mesa branch gives us access to key areas in Orange County, including major freeways: State Route 55 and Interstate 405, local colleges, a nearby airport, and the regional fairgrounds, making it an ideal spot to serve our customers and grow our

team,” said Andringa. “We also saw a need to be in Placentia, leading us to open a location there for our customers. We are committed to providing customers with the flexibility to use our full range of services at any of our locations.”

The official grand opening events are an exciting and rewarding milestone that highlights CES’s dedication to connecting with local communities. “These grand opening events show that we are here for the long term and let customers know we’re ready to help,” Andringa said. “They’re also a great way to introduce ourselves to many other local businesses in the area.”

Members of the Costa Mesa Chamber of Commerce were among the attendees to welcome the CES Costa Mesa location. David Haithcock, President & CEO of the Chamber, shared his support, saying, “City Electric Supply’s grand opening is a great addition to Costa

ABOUT CITY ELECTRIC SUPPLY

City Electric Supply (CES) is a third-generation family-owned and top-10 electrical wholesale distributor based in Dallas, Texas. Shaped with an enduring principle of empowering local decision-making among its employees, CES employs over 5,000 team members to provide customers with tailored services for all their electric supply needs. With a focus on internal growth and local community involvement, City Electric Supply is committed to supporting team members, vendor partners, and valued customers alike.



IWL LED Series Luminaires

Wall Pack LED Lighting for Industrial Facilities

The Appleton™ IWL LED Series Luminaires by Emerson are designed to provide safe illumination at outdoor entrance doors and along the exterior of commercial and industrial facilities. Three models — each with three field selectable wattages (lumen outputs) and three field selectable color temperatures — ensure the perfect configuration for your unique application requirements. Improve employee safety and security with the IWL’s bright, cost-efficient illumination.

[Learn More at: www.masteringled.com](http://www.masteringled.com)

APPLETON™

The Emerson logo is a trademark and a service mark of Emerson Electric Co. © 2024 Emerson Electric Co.



Russelectric, A Siemens Business, Highlights Advanced Automatic Transfer Switches with Bypass/Isolation for Critical Infrastructure

Built for durability, long life, minimal maintenance, and reliable performance

Russelectric, A Siemens Business, a leading manufacturer of power control systems and automatic transfer switches, highlights its range of Russelectric® automatic transfer switches with bypass/isolation capability for data centers, which allows the transfer switch portion to be isolated and de-energized for maintenance, testing, or repair. The Russelectric RTS-30 Series and Russelectric RTS-03 Series Bypass/Isolation transfer switches provide all the functions of a Russelectric automatic transfer switch plus the ability to bypass power from a live source to the load in the event the automatic function of the transfer switch is disabled.

Russelectric offers the most complete line of 480 VAC 30-cycle and 3-cycle UL tested switches available today. They have been fully tested, listed, and labeled for 30-cycle or 3-cycle closing and withstand under UL-1008. Full draw-out construction allows safe and easy removal of the transfer switch, eliminating the need to make any electrical or mechanical disconnections. Russelectric is the only manufacturer that offers both fail-safe and maintenance bypass switch designs.

They are rugged, built for long life, minimum maintenance, and trouble-free service. RTS-30 Series switches feature contact assemblies designed to handle the rigors of 30-cycle closing and withstand performance and offer exceptional arc-



and track-resistance. The main contact pad material is designed to prevent overheating, and stationary contact pad material prevents welding during high fault current conditions.

Also offered are Russelectric RTS-03 Series transfer switches with manual bypass/isolation, which have some of the highest 3-cycle closing and withstand ratings for 480 VAC or less, of any switches available today. All Russelectric RTS-03 Series automatic transfer switches have been fully tested for 3-cycle closing and withstand ratings under UL-1008. When coordinated

with current limiting fuses, Russelectric RTS-03 Series transfer switches have UL listed closing and withstand ratings of 200,000 amperes, at 480 VAC.

Russelectric RTS-03 and RTS-30 Series transfer switch contacts are machined from solid copper and feature tungsten arcing tips. All mechanical assemblies, linkages, and connecting rods are purpose-built and precision-machined. Mechanical linkages are sturdy anodized solid steel rods with aircraft-style ball joint fittings.

For more information, visit: <https://usa.siemens.com/bypassswitches>

ABOUT RUSSELECTRIC

Founded in 1955, Russelectric®, A Siemens Business, provides high-integrity power control solutions for mission critical applications in the healthcare, information technology, telecommunication, water treatment, and renewable energy markets. The company maintains vertically-integrated manufacturing facilities in Massachusetts and Oklahoma, where it designs and builds a full line of automatic transfer switches, switchgear, and controls. Russelectric products carry the longest and most comprehensive warranty in the industry, and are backed by a team of expert factory-direct field service engineers. To learn more about Russelectric products and the company's commitment to customer satisfaction, visit www.russelectric.com, call (781) 749-6000, or email info@russelectric.com.



THE SECRET TO UNDERGROUND POWER TRANSMISSION



OUR WUNPEECE TRANSMISSION SPACERS REDEFINE THE INDUSTRY STANDARD FOR UNDERGROUND POWER TRANSMISSION INSTALLATIONS. WITH PRECISION ENGINEERING AND UNMATCHED QUALITY,

JOIN THE RANKS OF INDUSTRY LEADERS WHO TRUST UNDERGROUND DEVICES FOR THEIR POWER TRANSMISSION NEEDS.



VISIT WWW.UDEVICES.COM AND EXPERIENCE THE FUTURE OF UNDERGROUND POWER INSTALLATION

NSI Industries Announces Transition of Remke® Cord Grips and Connectors into Bridgeport® Brand Portfolio

Effective Immediately, This Strategic Move Unites Two Trusted Names in Electrical Fittings Under One Brand Identity, Giving Distributors and Contractors a Stronger, More Complete Product Offering

NSI Industries recently announced that effective January 1, 2026, the Remke® product line of cord grips and connectors has officially transitioned into the Bridgeport® brand. This strategic move unites two trusted names in electrical fittings under one brand identity, giving distributors and contractors a stronger, more complete product offering.

“This transition is about simplifying the way our customers do business while expanding the solutions we deliver,” said Joe Saganowich, NSI’s Chief Commercial Officer. “By consolidating Remke’s expertise in cord connectors and cable grips with Bridgeport’s 100 years of trusted performance, we’re ensuring contractors and distributors have access to the most complete, innovative portfolio of fittings in the market, all backed by NSI’s service, engineering, and supply chain strength.”

For more than a century, Bridgeport has been a leader in cable and conduit fittings, engineered for real-world applications and built to perform in demanding environments. By bringing Remke’s broad portfolio of cord connectors, cable grips, liquidtight fittings, and related solutions into the Bridgeport family, customers will now



benefit from a single, comprehensive source for fittings that deliver industrial-strength performance and jobsite-ready reliability.

- Benefits for customers include:
- Expanded product portfolio: a unified catalog that combines Bridgeport’s legacy conduit fittings with Remke’s extensive line of cord connectors and cable grips for industrial, commercial, and harsh-environment applications.
 - Streamlined Sourcing: one brand, one point of contact, and simplified ordering through Bridgeport’s nationwide distribution network.
 - Consistent Quality: products backed by Bridgeport’s U.S.-based engineering, responsive service, and industry-leading reliability.

• Future Growth: a stronger platform for innovation, with continued investment in new solutions that save time, reduce labor, and ensure code compliance.

The Remke brand has long been associated with quality, service, and corrosion-resistant solutions. That legacy will now continue under the Bridgeport name, ensuring customers receive the same trusted performance, now as part of a broader, more powerful brand family.

Molded connectors and cordsets will continue under the Remke brand. For more information on the transition and updated product resources, please visit nsiindustries.com/bridgeport or contact your NSI regional sales manager. □

ABOUT NSI INDUSTRIES, LLC

NSI’s core philosophy is *Making Connections*. Focused on the electrical, building technology, and HVAC markets, NSI connects distributors to products, services, and technologies by providing a fresh perspective and caring approach that drives smart solutions. The driving force behind a stable of market-leading brands and a large breadth of products, the company’s primary job for more than 45 years has been to fulfill the needs of distributors and their customers. By staying grounded in the principles of service and value, NSI continues to deliver high-quality, industry-advancing, and comprehensive product solutions that enable growth. NSI has many well-respected brands, including Bridgeport Fittings®, Polaris® Power Connectors, TORK®Timers and Controls, WarriorWrap® Professional Tape, TERMINATOR™ Premium Wire Connectors, RHINO Safety™, Platinum Tools®, TechLogix Network, Metallics™ Fasteners, Remke Industries, ENET, and Lynn Electronics. For additional information about NSI Industries and our family of brands, visit www.nsiindustries.com.



We’re Proud to be the Electricians’ Friend for Over 50 Years!

New Products Safer Better Faster

IP19

4-Conduit Block

Vertical support from only one 1/4", 3/8" or 1/2" threaded or threadless rods 1/4" or 3/8" threaded holes on the side along with slots for hex head bolts for hardware are provided for conduit support.



IP21a

QwikBlock

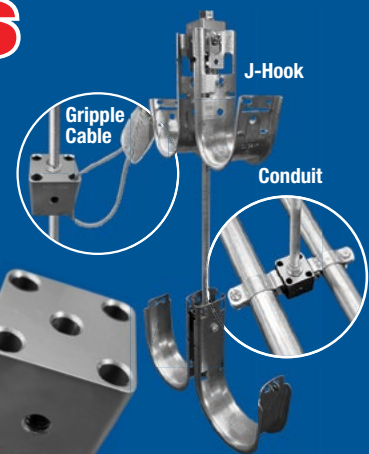
Vertical support from only one 1/4", 3/8" or 1/2" threaded rod by attaching two machine screws 1/4" x 20 thru the existing holes in back of the box. Eliminates knocking out center KO on box and traditional nut and washer method to support a single box.



IP20a

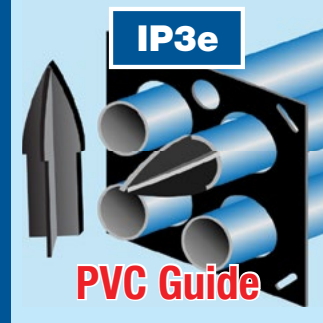
Box Support Rod Cubes

Vertical support from only one 1/4" or 3/8" threaded or threadless rod with 4 holes for Gripper applications as well as 4 threaded 1/4" or 3/8" holes for conduit support hardware.



IP3e

PVC Guide



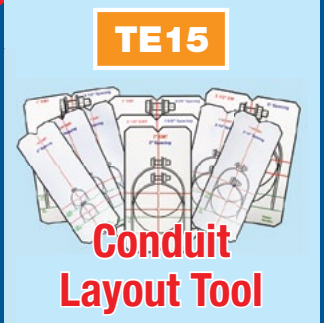
IP2b

PVC Driver



TE15

Conduit Layout Tool



IP3g

Long Slip PVC



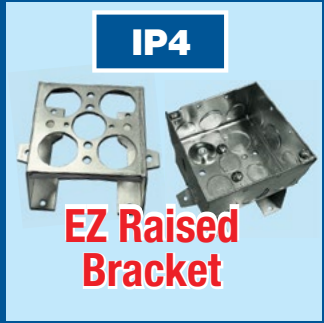
IP3f

Slip PVC/RGD



IP4

EZ Raised Bracket



For more information visit our website at SPProducts.com

Plus More Being Invented for SAFER BETTER FASTER Jobs . . . Call With Your Ideas!

Four Manufacturing Sites Earn The Copper Mark

Southwire is proud to announce that four of its manufacturing facilities have been awarded The Copper Mark for responsible production.

The Copper Rod Plant and Building Wire Plant in Carrollton, GA; the Douglas Plant in Douglas, GA; and the Starkville Plant in Starkville, MS all received The Copper Mark award.

The Copper Mark is the leading assurance framework promoting responsible practices across the copper value chain. To achieve these awards, each site underwent a rigorous independent assessment covering climate action, community health and safety, business integrity, responsible supply chains and inclusive employee experience.

“Our team’s commitment to doing things the right way – not just the easy way – has turned sustainability into a true competitive strength for Southwire,” said Veronica Braker, EVP, Operations at Southwire. “This honor is a reflection of our team’s leadership, discipline and the belief that progress and responsibility go hand in hand.”

These newly awarded sites join three Southwire facilities (Bremen, IN; Lafayette, IN; and Denton, TX) that were previously awarded The Copper Mark in 2023.



“Achieving The Copper Mark is an external recognition of our commitment to being an Extraordinary Place to Work and a leader in sustainable practices for generations to come,” said Burt Fealing, EVP, General Counsel and Chief Sustainability Officer at Southwire.

“At the Copper Mark, we understand the importance of fabricators in the copper value chain. The wire and cable produced at midstream sites is critical for energy grids and key components

for downstream manufacturing,” said Michèle Brüllhart, Executive Director at the Copper Mark. “It’s heartening to see sites like Southwire’s successfully using our standards and assurance for responsible production.”

Southwire remains committed to advancing sustainability and responsible production across its operations, reinforcing its role as an industry leader in environmental stewardship and ethical manufacturing. □

ABOUT SOUTHWIRE

Southwire Company, LLC is North America’s leading wire and cable company. The \$8.4B organization is made up of more than 9,000 team members across the globe who unite as ONE Southwire each and every day to serve each other, their customers and their communities. Southwire and its subsidiaries provide solutions including building wire and cable, metal-clad cable, utility products, portable and electronic cord products and OEM wire products. In addition, Southwire offers electrical products, engineered solutions and a variety of field support services. For more on Southwire, its products and solutions, its community involvement and its vision of sustainability, visit www.southwire.com.



ABOUT THE COPPER MARK

The Copper Mark is the leading assurance framework to promote responsible practices across the copper, molybdenum, nickel and zinc value chains. The Copper Mark assurance framework is available to all producers of the covered metals, including mines, smelters, refineries and metal manufacturers. Globally, more than 100 sites have completed the Copper Mark’s assurance process. To learn more about the Copper Mark, visit www.coppermark.org.



IToolCo.



CANNON iK

ELIMINATE HAND PULLS & INCREASE JOBSITE EFFICIENCIES.



NEWPRODUCTS

SolaHD™ Floor Mount Automation Transformers
Supply Uncompromising Performance in Hazardous Environments

High-capacity transformer line combines Class I, Division 2/Zone 2 certification with field-serviceable design—reducing installation time, system complexity, and total cost of ownership

Emerson SolaHD Floor Mount Automation Transformers are reliable power solutions purpose-built for harsh industrial and hazardous locations where conventional transformers fail. Featuring removable/replaceable gland plates and available in capacities from 15 kVA to 150 kVA, these non-ventilated transformers eliminate the need for multiple units while delivering uncompromising protection in Class I, Division 2 and Zone 2 environments. By consolidating power distribution into fewer, higher-capacity units, facilities reduce cabling requirements, panel complexity, and ongoing maintenance demands.



TECHNICAL SUPERIORITY IN EVERY SPECIFICATION

- **Hazardous Location Ready:** cULus Listed for Class I, Division 2/Zone 2 hazardous locations with T3/T3C temperature classification
- **Maximum Environmental Protection:** Rugged NEMA 1, 2, 3R, and 4/12 enclosures (optional NEMA 4X) shield against dust, moisture, corrosive atmospheres, shock, and vibration
- **Advanced Thermal Management:** UL Class +200 °C insulation system with +115 °C temperature rise maintains full reliability at +40 °C ambient (optional +50 °C custom designs available)
- **Industrial-Grade Encapsulation:** Electrical-grade silica and epoxy encapsulation protects internal components from harsh industrial atmospheres
- **Superior Power Quality:** Electrostatic shielding isolates electrical noise for cleaner power delivery
- **Optimized for Heavy-Duty Service:** Copper terminations standard; copper windings, K-factor, and low temperature rise designs available as custom configurations

For more information, visit
www.appleton.emerson.com/solahd



Altech Announces Tough, IP67 Enclosures
With Unique Seal System for Harsh Environments

Altech Corporation, a leader in industrial automation solutions, has introduced GEOS Series IP67-rated enclosures for demanding industrial and outdoor environments. These rugged, UL- and CSA-approved units are made from high-quality, lightweight polycarbonate and feature a unique “Drain Protect” seal system to protect against most environmental influences.

The Altech GEOS family’s polycarbonate construction withstands impacts and prevents scratches while providing exceptional resistance to UV rays, corrosion, rain, cold and heat, as well as oils, greases and mechanical stresses. GEOS’ innovative Drain Protect seal system consists of a widely overlapping cover with built-in drainage channel along the top edge of the enclosure base to divert moisture to the back of the unit. An elastomer seal

provides additional protection against concerns such as dust and dirt.

Customers can also choose an air ventilation element option that allows a continuous and high air-exchange rate. This keeps condensation outside of the enclosure while maintaining an IP65 rating. Additional features include:

- 35 to +80°C temperature resistance.
- Insulated protection.
- IK09 impact resistance rating.
- Modular component mounting system.

GEOS enclosures come in gray and black, and customers can choose from multiple mounting and closure options. A hinged version, GEOS Cabinet, is also available for outdoor applications.

For more information, visit
www.altechcorp.com

QUALITY. SERVICE. SELECTION.



Whatever your conduit challenge,
we’re flexible

Since 1955, Electri-Flex has provided top-quality conduit solutions. We offer nearly 50 types of Liqueflex® conduit to withstand extreme environments, confined areas, electronic interference and other challenges. Customers recognize our conduit for its superior crush strength, achieved by building in more convolutions per foot. Our expertise also extends to R&D, quality control, shipping and customer service. Electri-Flex has been a family-owned business for three generations.

Contact us today, and discover excellence around every bend.

electri-flex



222 West Central Avenue
Roselle, IL 60172-1994 USA

Toll-free: (800) 323-6174
Phone: (630) 529-2920
Fax: (630) 529-0482

www.electriflex.com

DISTRIBUTORS
WORLDWIDE



NEWPRODUCTS

Security Flood Lights Combine Optimal Performance with Advanced Integrated Features for Simple Onsite Adjustment and Installation

Combining optimal performance with an aesthetic appeal at an unmatched price, the AMP SECURE™ twin head security light family minimizes light spill, ensuring focused, low-glare illumination that enhances safety and security without disturbing neighboring properties.

Ideal for both residential and light commercial installations, this versatile family is offered in both round and square head styles and boasts advanced built-in features, including selectable lumens (1600 and 3400) and color temperatures (3000K, 4000K and 5000K) for convenient onsite adjustment to match other lighting products. An integrated photocell provides automatic dusk-to-dawn operation, while 0-10 volt dimming allows for brightness adjustment. The built-in 4kV surge protection safeguards the fixtures against electrical surges.

For added security, the family offers an optional PIR motion sensor, which activates the light when motion is detected. Adjustable knobs allow for setting the minimum threshold of light to turn on at dusk, and to set the amount of time on before turning off after motion is detected. The motion sensor has a horizontal range of 120° and a distance of approximately 30 feet.

Constructed of durable die-cast aluminum with a marine-grade polyester powder coat finish, the IP66-rated security fixtures are designed to withstand harsh outdoor conditions. The finish is rated per ASTM B117 for a minimum 1000-hour salt spray test, ensuring longevity. The UV and impact-resistant polycarbonate lens provides uniform light distribution, reducing glare and pixelation. Premium optics deliver wide light distribution, while heat-dissipating fins optimize thermal management, enhancing LED performance and extending the lifespan.

Designed for efficiency single-person installation, the fixtures feature a universal mounting bracket with a built-in bubble level for precise positioning and an easy-to-install decorative plate. The integrated security tether frees hands for wiring, and the tool-free vertical adjustment makes aiming easy.



For more information, visit www.amplighting.com

Cementex Highlights Electric Vehicle Tool Kits for Safe & Effective EV Response

Cementex tool kits equip first responders and technicians with 1000VAC / 1500VDC rated tools for high-voltage EV environments

Cementex, the safety tool specialists, highlights its 13-piece and 18-piece Electric Vehicle Tool Kits, developed as essential resources for professionals and first responders working with hybrid and electric vehicles. Designed as the starting point for safely servicing any EV, these kits provide a core selection of DC voltage rated tools needed to approach high-voltage vehicles with confidence.

The Cementex 13-Piece Electric Vehicle Tool Kit includes a focused set of insulated tools such as combination wrenches, pliers, screwdrivers, and a torque wrench, all organized in a tool roll pouch and large canvas tote. The compact design makes it a practical choice for technicians and emergency personnel who need to act quickly and safely in the field.

The 18-Piece Electric Vehicle Tool Kit builds on this foundation with an expanded range of tools including open end wrenches, additional pliers, and a ratchet with drive sockets. Housed in a zippered tool bag and large canvas tote, the kit is ideal for use in more demanding environments where durability and portability are critical.

Both kits are manufactured in the U.S.A. with U.S. and globally sourced materials. All tools feature Cementex's double insulation, are tested to 10,000 volts AC, and rated for live use up to 1,000 VAC / 1,500 VDC. These tools help meet OSHA safety-related work practices and comply with NFPA 70E, CSA-Z462, IEC 60900, and ASTM F1505 standards.



the appropriate additional personal protective equipment, including arc flash clothing and rubber insulating goods, to ensure full protection when working on or near energized systems.

For more information, visit www.cementexusa.com

B2 RAPID FIRE BENDER WITH TOUCH CONTROL

BEND UP TO 2" EMT, IMC, RIGID OR ALUMINUM CONDUIT WITH ONE SHOE



STOP SEARCHING FOR CORRECT BEND ANGLES

STORE UP TO 5 OF YOUR FAVORITE BRANDS



iTOOLCo.



SP PRODUCTS, INC.
Productivity and value thru ideas
FOR SAFER BETTER FASTER JOBS

2025 NECA
ShowStopper
WINNER



Sealtite/Liquidtite to EMT



**Transitions from
Liquidtite to
EMT in minutes**

**Great for wiring
transformers,
solar systems
& pumps.**

All SP Products Inc.
Transition Fittings are manufactured
for installation to either meet or
exceed in accordance with NEMA TC2,
TC3 or UL 651 specifications



PATENT
PENDING

1/2" thru 4"

Transition Couplings

Size	Catalog #
1/2"	50-LT-EMT
3/4"	75-LT-EMT
1"	100-LT-EMT
1-1/4"	125-LT-EMT
1-1/2"	150-LT-EMT
2"	200-LT-EMT
2-1/2"	250-LT-EMT
3"	300-LT-EMT
3-1/2"	350-LT-EMT
4"	400-LT-EMT

SP PRODUCTS, INC.
Productivity and value thru ideas



PATENT PENDING
PATENTED

LABELS APPLY TO PRODUCTS ONLY WHERE SHOWN ABOVE



730 Pratt Boulevard • Elk Grove Village, IL 60007
P: (847) 593-8595 • F: (847) 593-8629 • Toll-free (800) 233-8595
E: info@spproducts.com • www.spproducts.com

IP13bb

NEWPRODUCTS

Legrand Launches NEC-Compliant Kitchen Countertop Outlet Built for the Way Kitchens Work Today

Quick installation, small footprint and corrosion-resistant design for modern islands and peninsulas

Legrand®, a global leader in electrical and digital infrastructure, today announced the release of its Kitchen Countertop Outlet, delivering a sleek, safe, and code-compliant power solution for modern kitchen islands and peninsulas. Developed in response to 2023 NEC Section 210.52(C)(3) updates, which prohibit outlets on the sides of kitchen islands, this innovative device brings power directly to the surface without compromising design or install efficiency.

Engineered for fast installs, everyday durability, and seamless aesthetics, the Kitchen Countertop Outlet features the smallest surface-mounted profile on the market. It takes up 40% less space than traditional pop-up models and includes a simplified connection system with UL 498 certification for safety and performance. It delivers high-performance power access for residential and hospitality spaces, and is ideal for contractors, builders, electricians, and designers navigating evolving code standards.

“Our goal was to solve for safety and compliance while making it easier and faster for the trades to deliver beautiful, functional kitchen countertops,” said Racheal Rich, Product Manager, Legrand. “This product eliminates the need for bulky pop-ups or workarounds, and gives pros a truly install-friendly solution they can count on to pass inspection and wow homeowners.”

Key Features and Benefits:

- **NEC 2023 Code-Compliant** – Meets new requirements for power on kitchen islands and peninsulas
- **UL 498 Rated** – Passes UL half-gallon spill test and is tested to 2000V dielectric strength
- **Simple Installation** – 90-degree snap-in connector and hand-turn nut allow for fast installs above and below counter; a first-of-its-kind
- **Durable and Easy to Clean** – Surface-mount design resists corrosion and integrates cleanly with countertops
- **Tamper-Resistant** – Built-in shutters protect against object insertion, ideal for family-safe kitchens
- **Minimalist Profile** – Smallest diameter and depth on the market, reduces visual and physical impact and creates more usable space under the counter
- **Design-Minded Finishes** – Device comes in matte black or white; cast-metal lids available in black, white, stainless steel, and champagne bronze

For more information, visit www.legrand.us



Flir iXX-Series Combines Thermal Camera with App-Enabled Functionality to Transform Asset Condition Monitoring Tasks

Flir iXX with Assetlink Browser-Based Software Leverages Asset-Centric Structured Data to Speed Workflows and Aid Better Decision Making.

Flir, a Teledyne Technologies company, today introduced the iXX-Series of next-generation app-enabled thermal cameras that are set to transform inspection tasks across a multitude of asset condition monitoring, building inspection, and other applications. Built on Flir’s new ACE platform, the iXX combines the power of apps with a high-performance thermography inspection tool, enabling scalable, intuitive, and connected condition monitoring. Notably, direct integration with Flir Assetlink browser-based software automatically connects Flir radiometric images to an asset hierarchy structure, speeding workflows and delivering critical insight.

Traditional thermal inspections are often complex, inconsistent, and disconnected. Scaling traditional thermography programs can be difficult, yet failing to do so results in safety and productivity related costs. The new Flir iXX solves these challenges with a high-quality, app-driven platform that simplifies inspections, standardizes data, and scales effortlessly across teams and sites.

“Most people don’t buy smartphones for the hardware, but to take advantage of capability-enhancing apps,” explains Rob Milner, Director Business Development. “Using its ACE ecosystem, our new iXX becomes a portable infrared camera that hosts Flir and third-party apps to solve end-user pain points. Customers gain from simplified and faster workflows, support for inexperienced operatives, and the ability to solve documentation, communication, and decision pains. With the iXX, it’s even possible to create private apps that meet user-specific requirements and goals.”

For more information, visit www.flir.com/ixx-series

AUTHORIZED DISTRIBUTOR OF



Class 00 Arc Flash Glove Kit

Class 00 arc flash glove kit from Cementex is a good option for a reliable kit for work with 500 Volts or less. The gloves are made of natural rubber construction, offering the required dielectric properties combined with flexibility, strength, and durability. Gloves feature rolled cuffs, and are anatomically shaped thereby reducing hand fatigue. Each glove is chlorinated for maximum comfort.

Components of Cementex IKG00-11 glove kit:

- 11” long Class 00 rubber insulating gloves
- Leather protectors
- Canvas storage bag

Cementex
The Safety Tool Specialists

Deluxe Geared Maintenance Tool Kit

Cementex Double-insulated Tools:

- Comply with the IEC 900 standard
- Comply with ASTM F1505-01 standard
- Help you meet requirements of OSHA Safety Related Work Practices, NFPA 70E Standard and CSA-Z462

Cementex Double-insulated Tools are:

- Tested to 10,000 VAC and rated for 1,000 VAC when working on live parts
- Manufactured in the USA with domestic and global materials.
- Marked with the international safety symbol – (double triangle) 1000V



CALL US TODAY
(703) 367-0404

OR VISIT OUR ONLINE ELECTRICAL SAFETY EQUIPMENT STORE
www.electricalsafetyequipment.com

NEWPRODUCTS

Appleton A-51 Luminaires Bring Advanced LED Technology to Low Mounting Height Areas in Hazardous Industrial Locations

Explosion-proof LED Lighting Supplies Energy Efficiency, Zero-Rewire Retrofit Compatibility, and 60,000-Hour Longevity

With a compact footprint, reduced weight, and multiple mounting configurations, Appleton A-51 LED luminaires are ideally suited for low height installations in industrial plants where safe clearance is critical. Their streamlined design ensures needed headroom while achieving energy-efficient, highly reliable illumination in demanding environments. NEC/CEC compliant for areas classified as Class I, Division 1, Group C and D, the A-51 brings the energy efficiency and longevity of LED technology to petrochemical facilities, manufacturing plants, refineries, and other hazardous locations.

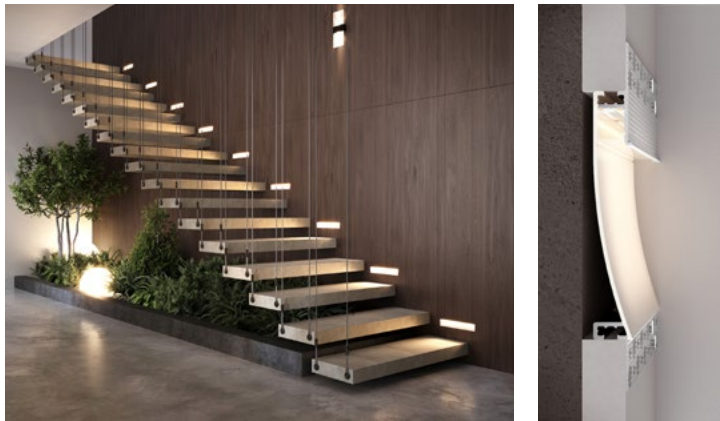
Designed with backward compatibility, Appleton A-51 LED luminaires install directly into legacy A-51 incandescent mounting hoods with zero rewiring required, dramatically reducing retrofit time, labor costs, and operational downtime. Plug-and-play architecture enables facilities to modernize their lighting infrastructure without the expense and disruption of a complete system replacement. Additionally, easy threading off of the A-51 fixture unit from the mounting hood allows for quick replacement with a new fixture or handy servicing.

The Appleton A-51 LED is significantly more energy efficient than HID (High Intensity Discharge) lighting, including metal halide and high-pressure sodium lamps. LED is typically 50–80% more energy efficient than HID equivalents, with real-world replacements often achieving 60–75% reductions in power consumption for the same or better illumination. Likewise, LED is up to 60% more efficient than fluorescent lighting and 75–90% more energy efficient than incandescent fixtures, while creating less heat and turning on instantly at full brightness.

Industrial-Grade Performance

- Available in models equivalent to 100-300W incandescent and HID lamps, the Appleton A-51 LED series fulfills the need for exceptional luminous output up to 3,200 lumens while consuming significantly less power. Key performance specifications include:
- **Extended Service Life:** Reported L70 life of 60,000 hours—up to 10x longer than traditional incandescent solutions
 - **Factory Sealed:** All A-51 LED fixtures are factory sealed so no external sealing fittings are required
 - **Superior Surge Protection:** Internal 6KV surge suppression safeguards LED drivers against voltage spikes and electrical transients
 - **Advanced Thermal Management:** An aluminum heat sink paired with thermally conductive polymer potting compound maintains optimal LED driver temperatures, ensuring maximum reliability and lifespan
 - **Enhanced Color Rendering:** CRI >80 delivers accurate color representation for improved visibility and safety
 - **Wide Operating Range:** Rated for -25°C to +55°C (-13°F to +131°F), supporting deployment in extreme environmental conditions
 - **Corrosion-Resistant Finish:** Gray epoxy powder coat with electrostatic application provides long-lasting protection in harsh industrial environments

For more information, visit www.masteringLED.com



Perifina Wall Accent 2 in., 3 in., & 4 in.

Offered in three sizes, the Perifina Wall Accent recessed mud-in family is crafted with a subtle scoop design that gently diffuses light, creating an attractive and smooth gradient.

Easy to install, the Perifina Wall Accent collection can easily go around corners without light gaps or the need for complicated soldering – unlike most solutions on the market. For added versatility, a unique feature includes select models compatible with 1/2 in. drywall, and all models are compatible with 5/8 in. drywall, meeting a growing demand.

Available with a Frosted lens, the luminaire’s paintable surface ensures seamless integration with any décor or color palette. The luminaires offer the ultimate in customization with lengths offered in 1-inch increments.

The Perifina Wall Accent 2 in., 3 in., and 4 in. family features superior color rendering with high R9 and R13 values and color variation is kept with a 2-step MacAdams ellipse for quality and consistency. The product family is offered in numerous lumen outputs and in seven color temperatures ranging from 2200K to 5000K.

For more information, visit www.optique-lighting.com



Galvanized Rigid Transition Couplings to Schedule 40/80 PVC Stub-Up

When Concrete is Poured and Metal Below the Slab is Needed

Transitions in Less Than 5 Minutes!

Save Cost on the Rigid Nipple, Tape & Labor

Use for Entire Job - Not Just for Repair



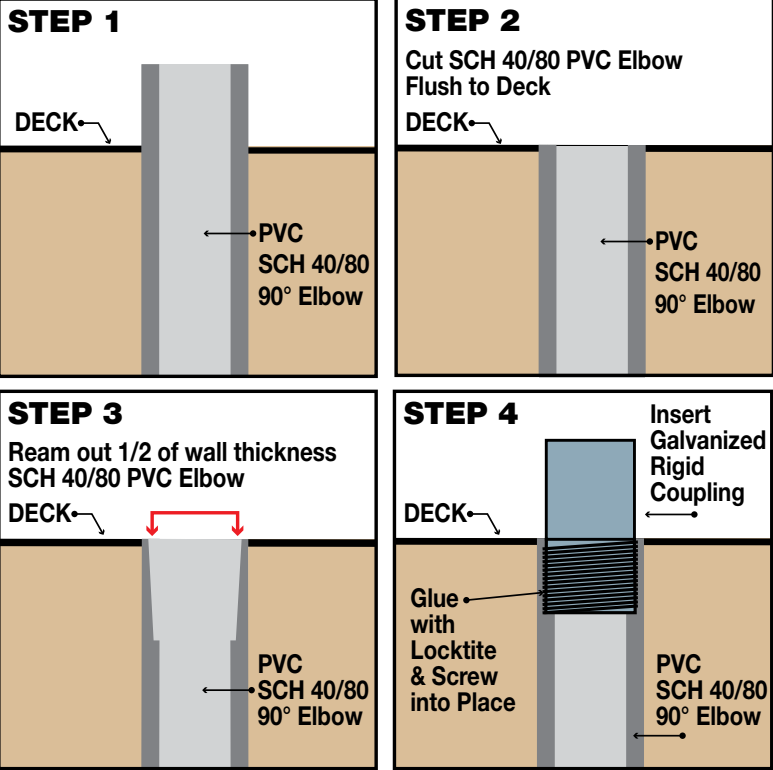
Saves a great deal of time transitioning from PVC conduit to Rigid Conduit above slab without damaging PVC risers and chipping concrete eliminating a concrete repair job!

All SP Products Inc. Transition Fittings are manufactured for installation to either meet or exceed in accordance with NEMA TC2, TC3 or UL 651 specifications

1/2" thru 6"

Transition Couplings	
Size	Catalog #
1/2"	50-PVC-R-GRC
3/4"	75-PVC-R-GRC
1"	100-PVC-R-GRC
1-1/4"	125-PVC-R-GRC
1-1/2"	150-PVC-R-GRC
2"	200-PVC-R-GRC
2-1/2"	250-PVC-R-GRC
3"	300-PVC-R-GRC
3-1/2"	350-PVC-R-GRC
4"	400-PVC-R-GRC
5"	500-PVC-R-GRC
6"	600-PVC-R-GRC

All Above Meet UL651 CSA C22.2, No.85 and US Army Corps Engineers Specifications



Customer must satisfy all codes and owners' specifications.

PRODUCTS, INC

Productivity and value thru ideas

MADE IN USA

UL

UL

PATENT PENDING

PATENTED

LABELS APPLY TO PRODUCTS ONLY WHERE SHOWN ABOVE

730 Pratt Boulevard • Elk Grove Village, IL 60007
P: (847) 593-8595 • F: (847) 593-8629 • Toll-free (800) 233-8595
E: info@spproducts.com • www.spproducts.com


ADVERTISER INDEX


This advertiser index is compiled as a courtesy to our readers. While every effort is made to provide a complete and accurate listing of companies and page numbers, the publisher is not responsible for errors. **Click the company name or page number to see their advertisement.**

Company	PG#	Company	PG#
APPLETON / EMERSON	13	KRENZ & COMPANY	32
APPLETON / EMERSON	15	MILLER SAFETY CONSULTANTS LTD	7
BASETEK, LLC	5	MILLER SAFETY CONSULTANTS LTD	29
CONDUIT REPAIR SYSTEMS	4	SP PRODUCTS INC	1
ELECTRI-FLEX	23	SP PRODUCTS INC	19
iTOOLco	IFC	SP PRODUCTS INC	26, 27
iTOOLco	21	SP PRODUCTS INC	31
iTOOLco	25	SP PRODUCTS INC	BC
iTOOLco	IBC	UNDERGROUND DEVICES	11
KNOCK'ER-IN	3	UNDERGROUND DEVICES	17

When it comes to transformer cooling fans, Krenz-Vent is the industry recognized gold standard. Our leadership position is earned through 80+ years of R&D plus our superior engineering and customer service. You can rest easy when you specify Krenz fans.

ENGINEERED TO COOL
There is no comparison.





KRENZ & COMPANY, INC.

KRENZVENT.COM • 262.255.2310 • KRENZ@KRENZVENT.COM

ALL THE INFORMATION YOU NEED IS JUST A CLICK AWAY AT **WWW.EPSMAG.NET**

Electrical Products & Solutions

Transition Couplings
PVC Bell End Adapter
Galvanized Rigid Conduit - 1/2" thru 6"

HOME ARTICLES NEWS VIDEOS PRODUCTS SUBSCRIBE CONTACT

Warming Up to Electrical Heating Cables

WHAT'S NEW

Conduit Repair Systems, Inc.
The World Leader in Split Conduit Products

EPS Magazine in Your Inbox

DMF Lighting Expands its M Series Commercial Collection with High Lumen Packages for Hospitality and Mix-Use Spaces

New Multi-Tester from Klein Tools® Combines Core Electrical Products into One Model

HPS Launches SineWave Filter To Safeguard Motor and Cables

CORDLESS CANNON 6K

iTOOLco.
WWW.iTOOLco.com | 865.670.3713

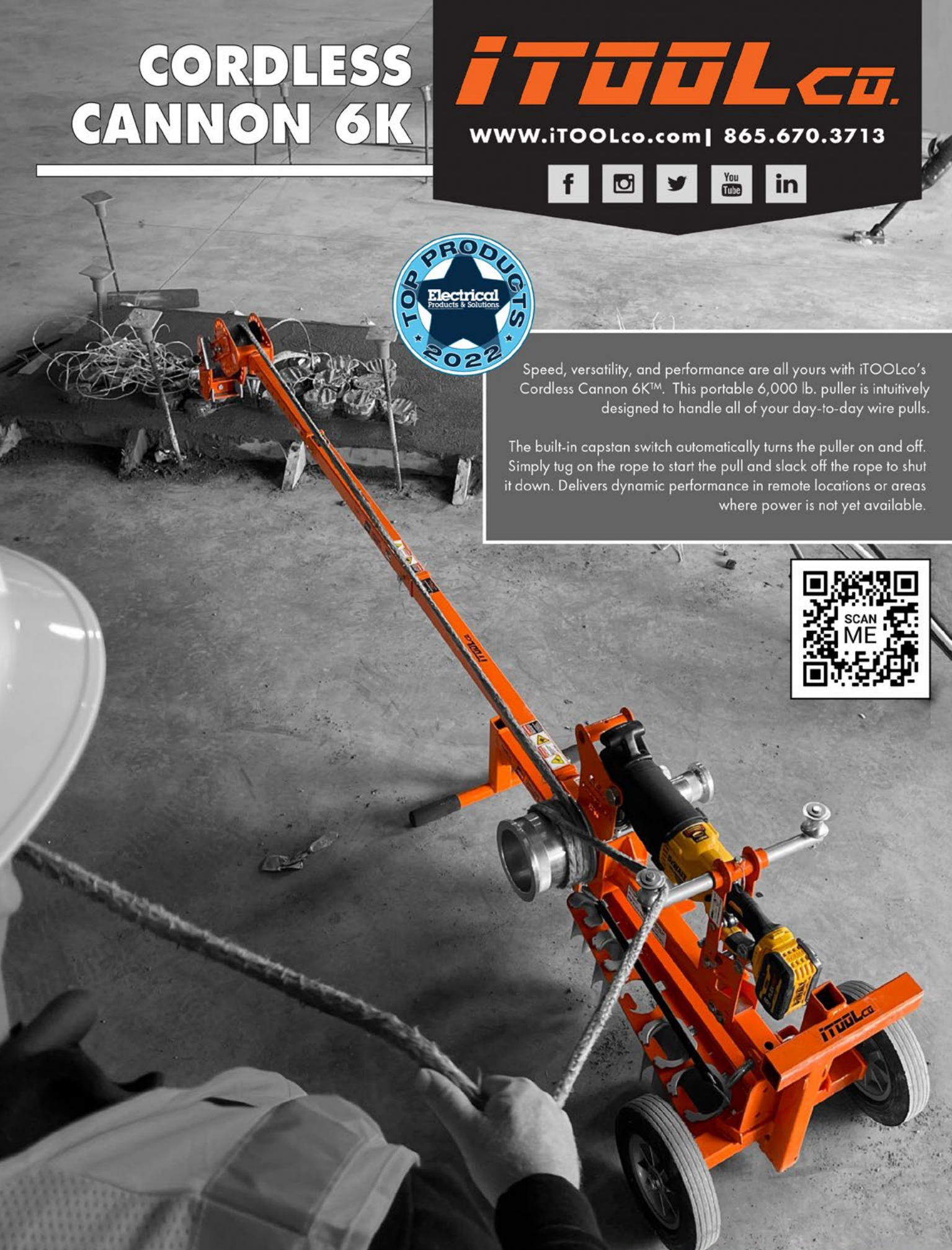
f i t You in

TOP PRODUCTS 2022
Electrical Products & Solutions

Speed, versatility, and performance are all yours with iTOOLco's Cordless Cannon 6K™. This portable 6,000 lb. puller is intuitively designed to handle all of your day-to-day wire pulls.

The built-in capstan switch automatically turns the puller on and off. Simply tug on the rope to start the pull and slack off the rope to shut it down. Delivers dynamic performance in remote locations or areas where power is not yet available.

SCAN ME





SPPRODUCTS, INC.

Productivity and value thru ideas
FOR SAFER BETTER FASTER JOBS

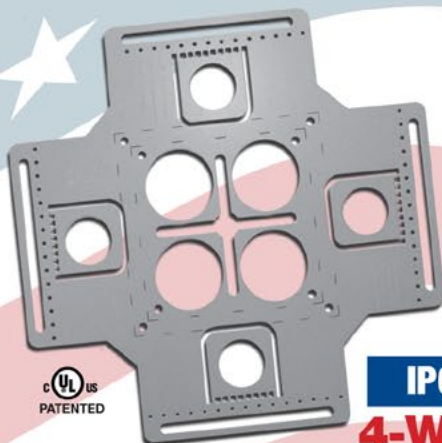


We're Proud to be the Electricians' Friend for Over 50 Years!

IP5

"The Original"

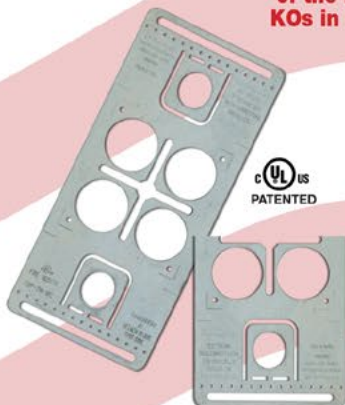
Enter Any KO on Both Sides of the Box



IP6

4-Way

Enter Any KO on All 4 Sides of the Box Plus 4 Large Open KOs in Center Allows Entering Back of Box



IP6a

2-Way/Half

Enter Any KO on 1 or 2 Sides of the Box Plus Large Open KOs in Center Allows Entering Back of Box



IP19/20

4-Conduit Block
PATENTED



IP21a

QwikBlock
PATENT PENDING

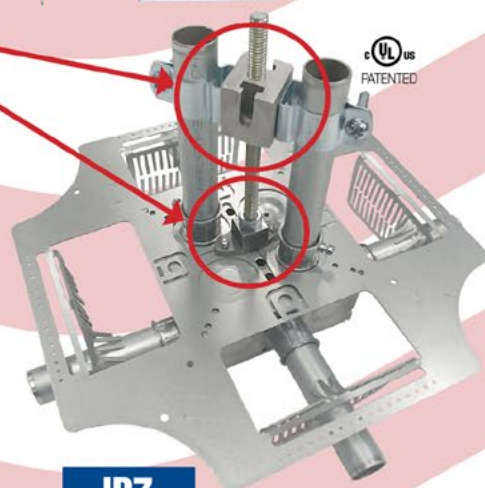
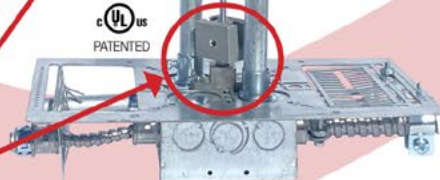
Use 4-Conduit Block (IP19 or IP20) with QwikBlock (IP21a)

Our Family of Conduit & Box Support Plates Saves Valuable Time & Money!

IP6d

2-Way

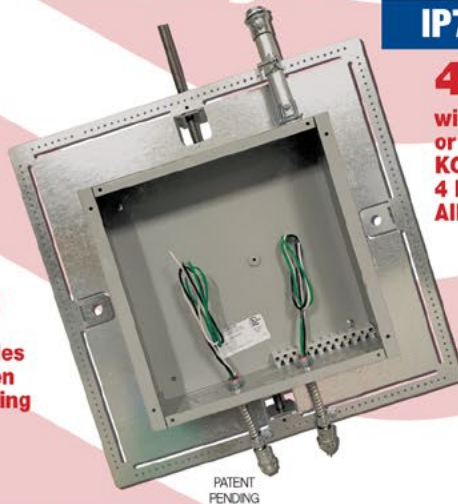
with Split Fingers for Horizontal or Vertical Installation



IP7

4-Way

with Split Fingers for Horizontal or Vertical Installation. Enter Any KO on All 4 Sides of the Box Plus 4 Large Open KOs in Center Allows Entering Back of Box.



PATENT PENDING

IP8

Mount Horizontally or Vertically from One Single Support

20 x 20

Supports up to 12 x 12 J-Box

28 x 28

Supports up to 20 x 20 J-Box

MADE IN THE USA!

Plus More Being Invented for **SAFER BETTER FASTER** Jobs . . . Call With Your Ideas!

SPProducts.com **800-233-8595** info@SPProducts.com