

MAY 2026

Electrical Products & Solutions™

The Purchasing Guide for Electrical Contractors

www.epsmag.net



**Durable, Long-Lasting
Cable Markers Speed
Underground Fault
Response**

CANNON 12K

THE TOUGHEST WIRE PULLER YOU'LL EVER USE!



EXTRA EXTENSIONS: giving you up to 13' of wire from the conduit opening.



SIX SPEEDS: Dual capstans with 3 speeds on each AND reverse gear!



12,000 Lb. pulling capacity.



Dual capstans with a 3 speed motor.



Overhead, underground and side pull capabilities.

We're Proud to be the Electricians' Friend for Over 50 Years!

NEW PRODUCT!

IP1 Qwik Duct Safer Better Faster

IP3b IP3c

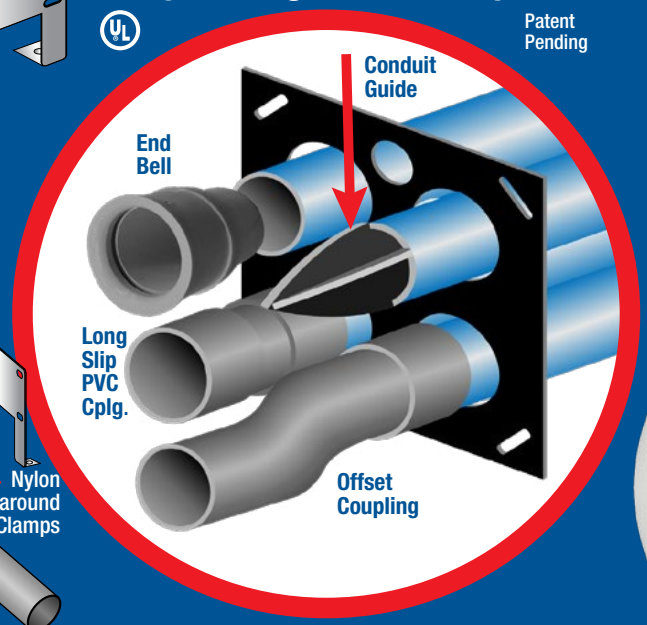
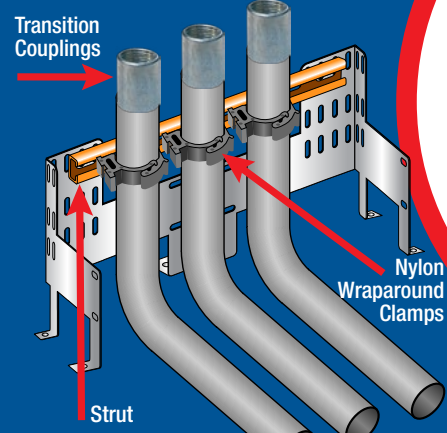
IP10a

EZ STUB-UP
Join two EZ Stub-Ups with strut to support and secure multiple stub-ups on wooden forms before concrete pour for sizes 1/2", 3/4", 1" & 1-1/4" stub-ups with SP's Nylon Support Brackets and transition to RGB with our transition couplings.

HDPE CUSTOM TEMPLATES
In Any Configuration Required

PVC Offset
Sizes 1/2" thru 6"
Meets Flexible Madrel Test Requirements

Bore Spacers
Sizes 1/2" thru 6"
Roll assembled conduit into caissons and under obstructions



IP13a-p

Conduit Transition Couplings



PVC schedule 40 & 80
Transitions in Less Than **5 Minutes**

Save Cost on the Rigid Nipple, Tape & Labor
Use for Entire Job - Not Just for Repair

Plus More Being Invented for SAFER BETTER FASTER Jobs . . . Call With Your Ideas!

Electrical Products & Solutions™
issue sponsors



Electrical Products & Solutions™
The Purchasing Guide for Electrical Contractors www.epsmag.net

PUBLISHER
Danny J. Salchert

OFFICE MANAGER
Anita Salchert

CREATIVE DIRECTOR
Derek Gaylard

CONTRIBUTING WRITERS
Vincent Miller



PRESIDENT
Danny J. Salchert

EXECUTIVE AND ADVERTISING OFFICES
2009 Eagle Ridge Drive
Birmingham, AL 35242
phone: 205.981.4541
www.epsmag.net
danny@epsmag.net

Electrical Products & Solutions™ is published twelve times a year on a monthly basis by ABD Communications, Inc., 3591 Cahaba Beach Road, Birmingham, Alabama, 35242, USA. *Electrical Products & Solutions™* is distributed free to qualified subscribers. Non-qualified subscription rates are \$57.00 per year in the U.S. and Canada and \$84.00 per year for foreign subscribers (surface mail). U.S. Postage paid at Birmingham, Alabama and additional mailing offices. *Electrical Products & Solutions™* is distributed to qualified readers in the electrical contracting industry. Publisher is not liable for all content (including editorial and illustrations provided by advertisers) of advertisements published and does not accept responsibility for any claims made against the publisher. It is the advertiser's or agency's responsibility to obtain appropriate releases on any item or individuals pictured in an advertisement. Reproduction of this magazine in whole or in part is prohibited without prior written permission from the publisher.

FOLLOW US ON



Versatile and Adaptable Illumination for Any Environment



Appleton™ IJL LED Series Luminaires

Appleton™ IJL LED Luminaires by Emerson are the premier jelly jar LED luminaires for industrial locations that offer versatile and adaptable illumination. With user selectable technology, they allow users to choose from a range of correlated color temperatures (CCT) and/or lumen outputs. Our engineers have developed specially designed optics that provide optimal light distribution – including upright. The IJL LED Luminaires offer multiple mounting options such as wall, ceiling, and pendant, with an adjustable arm that allows precise rotation in 10° increments from 0° to 90°.

Learn More at: www.masteringled.com



The Emerson logo is a trademark and a service mark of Emerson Electric Co. © 2024 Emerson Electric Co.



COMPANY PROFILE

6 Protect Yourself
Miller Safety Consultants —
A Leader in Arc Flash Protection
BY VINCENT MILLER

COVER STORY

8 Durable, Long-Lasting Cable Markers Speed Underground Fault Response



DEPARTMENTS

- 14** INDUSTRY NEWS
- 22** NEW PRODUCTS
- 32** AD INDEX

ON THE COVER

Photo courtesy of Tech Products

REPAIR CONDUIT IN A SNAP!

No Tape • No Plastic Straps • No Metallic Straps

NO KIDDING!

Designed especially for power, communications and fiber optics.



STEP 1
Remove damaged conduit

STEP 2
Cut split duct conduit to fit

STEP 3
Snap in place

STEP 4
Attach adapters

STEP 5
Finish job in record time

“The World Leader In Split Conduit Products”



Conduit Repair Systems, Inc.
The World Leader In Split Conduit Products



800.670.1804 • 435.673.8724 fax • crs@conduitrepair.com • www.conduitrepair.com

BASETEK

ZANITE PLUS POLYMER COMPOSITE

A base you can build on.

Call us today **877.712.2273**

PRECAST POLYMER HOUSEKEEPING PADS

- **Customized** to fit your exact project
- **4X Stronger** than traditional concrete pads
- **Rapid Installation** and Labor Savings
- **Stainless Steel** inserts for mounting equipment to the pad
- **Counter Bore** anchoring to existing concrete
- **Excellent** Corrosion Resistance
- **Flexibility and Options:**
 - Bottom access
 - Exact sizes
 - Dedicated handling and lifting



SET YOUR PRECAST POLYMER PAD AND MOUNT YOUR EQUIPMENT THE SAME DAY!

GO GREEN
environmentally friendly

Reuseable— just unbolt and move

For more visit
basetek.com or
info@basetek.com



BASETEK PRECAST POLYMER HOUSEKEEPING PADS

Proudly made in the **U.S.A.**

Built to last and outperform. We guarantee it.

©2025 BaseTek, LLC.,

Zanite Plus is a registered trademark of BaseTek LLC.

Protect Yourself

Miller Safety Consultants — A Leader in Arc Flash Protection

Vince Miller started Miller Safety Consultants, a veteran owned business in 1999. The goal of the business was to provide cost effective safety consulting, employee training such as: confined space entry, fall protection, electrical safety and provide sales of electrical shock and flash protective equipment and fall protection equipment to businesses in the Washington DC area.

Reliance Industries provided fall protection products and much of the sales and training was on behalf of the supplier. In 2000, the owner decided to retire from his business, and Vince decided to discontinue the fall protection line of his business and concentrate more in the electrical training and products.

Vince had been a distributor for Certified Insulated Products (CIP), a manufacturer of electrical insulated tools and electrical arc flash clothing manufactured by Otex in Rochester, New York. As a distributor, Vince provided sales through his internet website and much through relationships with electrical contractors. His training was a classroom environment and was provided directly to customers but he also taught as a sub-contractor for other safety consulting companies and the

Chesapeake Safety Council in Baltimore, Maryland. In 2005, Vince partnered with Vivid Learning Systems in Cascades, Washington to provide on-line training in safe work practices.

Training in electrical safe work practices is still provided locally in the Washington DC area and as a partner with an electrical engineering firm and online. The training is based on the Occupational Health and Safety Administration (OSHA) standards and the National Fire Protection Association (NFPA) 70E standard.

Miller Safety Consultants is now a distributor for Cementex USA, Burlington, New Jersey, for insulated tools and equipment and clothing from OTEX Protective, Rochester, New York.

The majority of his sales of products

are from the web-based store. Cementex is nationally known for their quality equipment. Otex Protective is becoming more known for their quality clothing. For years, they have manufactured their products under other provider labels. Vince chose to not create his clothing line, but to sell the manufacturer product.

Vince has worked with many electrical company employees to fine-tune the clothing to be more comfortable for the user. Working closely with the manufacturer, they have made slight changes in how the cloth pattern was modified to meet final production. An example is the lightweight 40 Calorie vented hood offered by Otex.

The material is of the latest technology. The vented assembly is constructed for balance on the back of the hardhat and the airflow is 27 CFM to prevent fogging of the face shield and provide cooling to the worker. It took over a year to develop the product with the user prior to having the hood “flash tested”. This product is now standard issue with many electrical contractors.

Being a small business and having quality providers has resulted in satisfied customers for Miller Safety Consultants. Being a direct supplier for OTEX Protective, another small business means customized customer needs can be met. □

For more information, visit
Miller Safety Consultants at:
www.electricalsafety.com, email
Vince at: sales@millersafetyltd.com.

AUTHORIZED
Cementex
The Safety Tool Specialists
DISTRIBUTOR

Give Vince a call at
(703) 367-0404



Deluxe Maintenance Tool Kit



Class O Glove Kit

Protect yourself from “Arc Flash”



We offer two lightweight 40 cal rated systems for employee protection -
PYRAD® Technology by GORE-TEX LABS, single layer and the two layer HYBRID (Protera/Indura) models.
Our unique ION-1 ventilation system uses Milwaukee’s M12 battery and the ION-2 ventilation system uses an internal rechargeable battery and variable speed control.



Both lift hoods feature 25+ CFM ventilators.
Adding the patented arc flash sensor automatically disconnects the fan power to stop the air flow and maintain a safe breathing zone within the hood.



CALL US TODAY
(703) 367-0404

OR VISIT OUR ONLINE ELECTRICAL SAFETY EQUIPMENT STORE
www.electricalsafety.com





Durable, Long-Lasting Cable Markers Speed Underground Fault Response

In underground electrical systems, accurate and visible tags and markers are essential for locating faults quickly and safely.

For electric utilities, even brief power outages can disrupt homes, businesses, and critical infrastructure. These interruptions can also impact public safety and diminish customer trust, so quickly identifying and resolving electrical line faults is essential.

The challenges can be even greater with underground systems that

distribute electricity through cables buried below ground. Unlike overhead lines, underground cables are not easily accessible. When a fault occurs, locating and repairing the problem often requires specialized tools and possibly excavation. Even minor failures can turn into extended outages.

To identify the probable location of the fault, linemen rely on data such

as feeder loads, breaker activity, and SCADA information before going out into the field to make repairs. However, this is where the work becomes more challenging. Physical signage at the site is a critical tool for directing utility crews to the precise location of underground cables, access points, and other infrastructure so the work can begin.

Therefore, when cable markers are





missing, mislabeled, or damaged, the entire fault-response effort is delayed. Dispatchers often require more time to narrow down the field location. Technicians must wait for updated locations. Electromagnetic detection, ground-penetrating radar, and vacuum excavation may be required.

This underscores the importance of signage that is accurate, visible, and legible over many years, despite the harsh underground environment.

“Cable tags and markers play a critical role in warning utility personnel about potential hazards, but also can help utilities minimize any downtime by facilitating the location of cables and other equipment underground faster,” explains Daniel O’Connor, General Manager of Tech Products, Inc., a New York-based manufacturer of industrial

identification solutions with over 75 years of experience.

O’Connor emphasizes that markers that are “good enough” for a few years may be slightly less expensive but are ultimately poor choices in the long run.

“The graphics should remain highly visible and legible for thirty to forty years after installation, even in harsh environments above and below ground,” says O’Connor.

Signs Everywhere

In underground electrical distribution systems, signage must be installed in several critical locations. The rules for signage are largely derived from OSHA regulations, the National Electrical Safety Code (NESC), the National Electrical Code (NEC), and ANSI standards for safety signage. Utilities also maintain

their own detailed signage and labeling standards that often exceed the general codes

Above ground, labels are posted on transformer enclosures, switchgear, cable risers, junction boxes, and utility access points. Common warning signs include “DANGER: High Voltage,” “Underground Electric,” and “Authorized Personnel Only.” Pad-mounted transformers and sectionalizing cabinets must include an equipment ID number, voltage and phase information, kVA rating, and manufacturer information.

Below ground, buried cable marker tape is often placed 12–18 inches above URD cables or conduit with warning text such as “Caution: Buried Electric Line Below” to alert excavation crews that electrical lines are present.

In underground vaults, manholes, and handholes, it is standard to label ducts, phases, and splices, using durable cable tags that include circuit and feeder IDs. These tags serve as essential safety warnings and help identify cable racks, grounding systems, junctions, and protective devices.

Unfortunately, the same underground environmental conditions that affect cable systems can also have an impact on any installed signage. For example, moisture can cause painted and laminated signs to fade or delaminate. Temperature extremes can cause plastic signs to become brittle or warp. Exposure to chemicals can also degrade plastics and coatings.

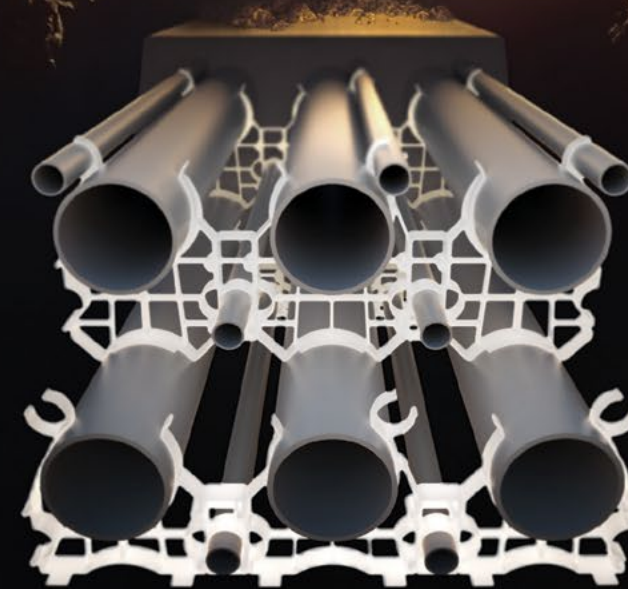
All these factors make it essential for utility signage to be made from materials designed for long-term outdoor or underground use.

One of the most common options are write-on tags, which allow users to add information using Sharpies, pens, or pencils on materials like plastic, paper, metal, or coated cardboard.

Despite their simplicity and convenience, write-on tags have notable limitations. Handwritten information is often illegible and can smudge and fade over time. In addition, only some write-on tags are designed specifically for harsh environments.

A better solution is high impact polyolefin plastic products like the EVERLAST® brand from Tech Products. The company offers a range

THE SECRET TO UNDERGROUND POWER TRANSMISSION



OUR WUNPEECE TRANSMISSION SPACERS REDEFINE THE INDUSTRY STANDARD FOR UNDERGROUND POWER TRANSMISSION INSTALLATIONS. WITH PRECISION ENGINEERING AND UNMATCHED QUALITY,

JOIN THE RANKS OF INDUSTRY LEADERS WHO TRUST UNDERGROUND DEVICES FOR THEIR POWER TRANSMISSION NEEDS.



VISIT WWW.UDEVICES.COM

AND EXPERIENCE THE FUTURE OF UNDERGROUND POWER INSTALLATION



of identification products for electric and gas utilities, telecommunication and cable companies, OEMs and pipeline companies.

EVERLAST cable tags and markers display text or pictograms that are permanently embedded through the entire thickness of the substrate. UV stabilizers and antioxidants are added to provide complete protection and weather resistance in all climates. The polyolefin plastic is impervious to sun, wind, rain, humidity, salt water, fumes, and acid/alkali solutions.

The tags and markers are not painted or screened but instead designed with solid black polypropylene characters permanently embedded into the substrate. Custom wording, logos, and a range of color options are available.

To speed the process of locating and

isolating the exact URD cable or urban feeder during a fault or outage, the EVERLAST line includes phase markers in 1" and 3" sizes that indicate the phase (A, B, or C) of each line.

When close-up reading is required in tight or confined spaces, miniature markers with raised, 3D characters, called FastTags by Tech Products, Inc., remain legible even in low light, oily, or dusty environments. The raised 3D characters are hot stamped with high quality UV stable foil and are nonconductive and non-corroding.

Underground Cabling Grows

Today, demand for underground electric cabling is only growing. Dense urban cores and downtown districts rely on underground networks because real estate is scarce, outages and safety

incidents carry high consequences, and aesthetics matter.

Regions exposed to severe weather and wildfire risk, including parts of California, Florida, and Hawaii, increasingly place distribution feeders and laterals below grade to reduce tree contacts and wind-borne faults. Planned communities, campuses, and industrial parks frequently specify "no-pole" covenants.

Given the increasing adoption of underground systems and with the stakes so high to quickly restore power, utilities need to effectively utilize industry best practice signage, tags, and markers to help technicians quickly and safely identify and resolve any faults.

For more information, call 1-800-221-1311; email info@techproducts.com; or visit www.techproducts.com. □

TOOLS YOU CAN TAKE TO THE BANK!



KNOCK'ER-IN
MADE IN U.S.A.
www.innisfreetools.com

FOR MORE INFORMATION CONTACT:
INNISFREE TOOLS, LLC
info@innisfreetools.com

ROLL'ER-ON
www.innisfreetools.com

Cementex Launches VIP American-Made 250th Anniversary Flag Giveaway

Monthly program celebrates American craftsmanship with premium USA-made flags

Cementex, the safety tool specialists, announces the launch of its VIP American-Made 250th Anniversary Flag Giveaway, a monthly program recognizing customer loyalty while celebrating America's upcoming 250th anniversary. The initiative will award nine exclusive Allegiance "America's 250th Anniversary" flags to Cementex VIP members from May through December, including a special bonus drawing for July 4th.

Designed to honor American manufacturing and heritage, the program features a premium 3' x 5' flag made in the USA by Allegiance Flag Supply. Each month, one VIP member will be selected at random, with all current and new VIPs automatically entered for a chance to win. No additional steps are required beyond VIP membership, reinforcing a simple and accessible experience for participants.

Through this initiative, Cementex continues to highlight its commitment to quality, safety, and American-made craftsmanship. Like the Allegiance flags, Cementex tools are proudly manufactured in the U.S.A. with U.S. and globally sourced materials, supporting high standards across critical industries.

Winners will be notified directly and may be featured in Cementex VIP communications, including newsletters and social media, as part of ongoing program engagement. The giveaway will be promoted across Cementex



digital channels, including its website, email campaigns, and social media platforms.

Cementex tools not only comply with ASTM F1505 and IEC 60900 standards

but also help meet the requirements of OSHA 1910.331-335, NFPA 70E®, and CSA-Z462. Learn more about the VIP program and upcoming promotions at www.cementexusa.com. □

ABOUT CEMENTEX

Cementex is the innovative, industry-leading supplier of safety hand tools. As the only double-insulated hand tool supplier that controls the entire manufacturing process from insulation through testing, Cementex has an unparalleled commitment to quality and user safety. With constant innovation in response to customer needs, Cementex is on the cutting-edge of both custom and turn-key engineered insulated tools. The design-driven company is continually innovating while remaining committed to producing only the highest quality safety-based products. For all of your safety equipment needs, including tools, personal protective equipment, and more, turn to the experts at Cementex. Visit www.cementexusa.com or call 1-800-654-1292 for additional information..



IWL LED Series Luminaires

Wall Pack LED Lighting for Industrial Facilities

The Appleton™ IWL LED Series Luminaires by Emerson are designed to provide safe illumination at outdoor entrance doors and along the exterior of commercial and industrial facilities. Three models — each with three field selectable wattages (lumen outputs) and three field selectable color temperatures — ensure the perfect configuration for your unique application requirements. Improve employee safety and security with the IWL's bright, cost-efficient illumination.

[Learn More at: www.masteringled.com](http://www.masteringled.com)



DMF Appoints Bruce Hemmelman as Regional Sales Manager, Northwest + North Central

Industry veteran brings deep expertise in lighting and product representation as DMF Lighting expands its commitment to dealer support

DMF, the leader in modular lighting in the technology integration channel, today announced the appointment of Bruce Hemmelman as Regional Sales Manager for the Northwest and North Central region, covering Washington, Oregon, Idaho, Michigan, Wisconsin, Illinois, North Dakota, South Dakota, Iowa, Missouri, Nebraska, and Kansas. This is the latest in a series of strategic initiatives DMF is making to strengthen support for its dealer network.



where he partnered with leadership teams to improve processes, strengthen operational controls, and build scalable frameworks to support growth. Prior to that, Hemmelman served as the principal at Concordia Lighting and Controls, based in Vancouver, WA. He built a reputation for first-class brand representation, with a strong focus on keeping integrators and specifiers current on evolving product solutions, from dimmer compatibility and color tuning to fixture selection across residential and commercial applications.

Hemmelman began his career in the lighting industry as a territory manager for a premium lighting manufacturer, giving him a foundational understanding of lighting controls that continues to

inform his customer-first approach today.

“I’ve followed DMF for years because they’ve consistently done what few manufacturers manage, engineered genuinely flexible, high-performance lighting solutions without compromising on quality

or aesthetics,” said Bruce Hemmelman, Regional Sales Manager, DMF Lighting. “Both the Northwest and North Central regions have a strong community of forward-thinking integrators, and I’m eager to help them put DMF’s products to work in ways that truly elevate the end-user experience.”

For more information about DMF, visit www.dmfluxury.com. □

“I’ve followed DMF for years because they’ve consistently done what few manufacturers manage, engineered genuinely flexible, high-performance lighting solutions without compromising on quality or aesthetics,”

—Bruce Hemmelman, Regional Sales Manager, DMF Lighting

Hemmelman will work directly with DMF’s custom integrators, contractors, and specifiers to ensure they have the product expertise, training, and hands-on support needed to specify and install DMF’s lighting platform with confidence. His appointment reflects the company’s ongoing commitment to being more than a manufacturer, serving as a true partner to the dealers and integrators who bring exceptional lighting experiences to their clients.

“Bruce’s career has been built around the same values we engineer into every DMF product, performance, flexibility, and doing right by the customer,” said Mike Libman, Vice President of Sales, Custom Integrators, DMF. “He understands the technology integration channel deeply, and he knows how to match the right lighting solution to the

right project. Our modular platform gives integrators real tools to elevate what they deliver, and Bruce is exactly the person to bring that story to life in the Northwest and North Central region.”

A native of Ridgefield, WA, Hemmelman joins DMF from his most recent role as a Senior Lighting and Controls Consultant for RJH Consulting and Evergreen Energy,

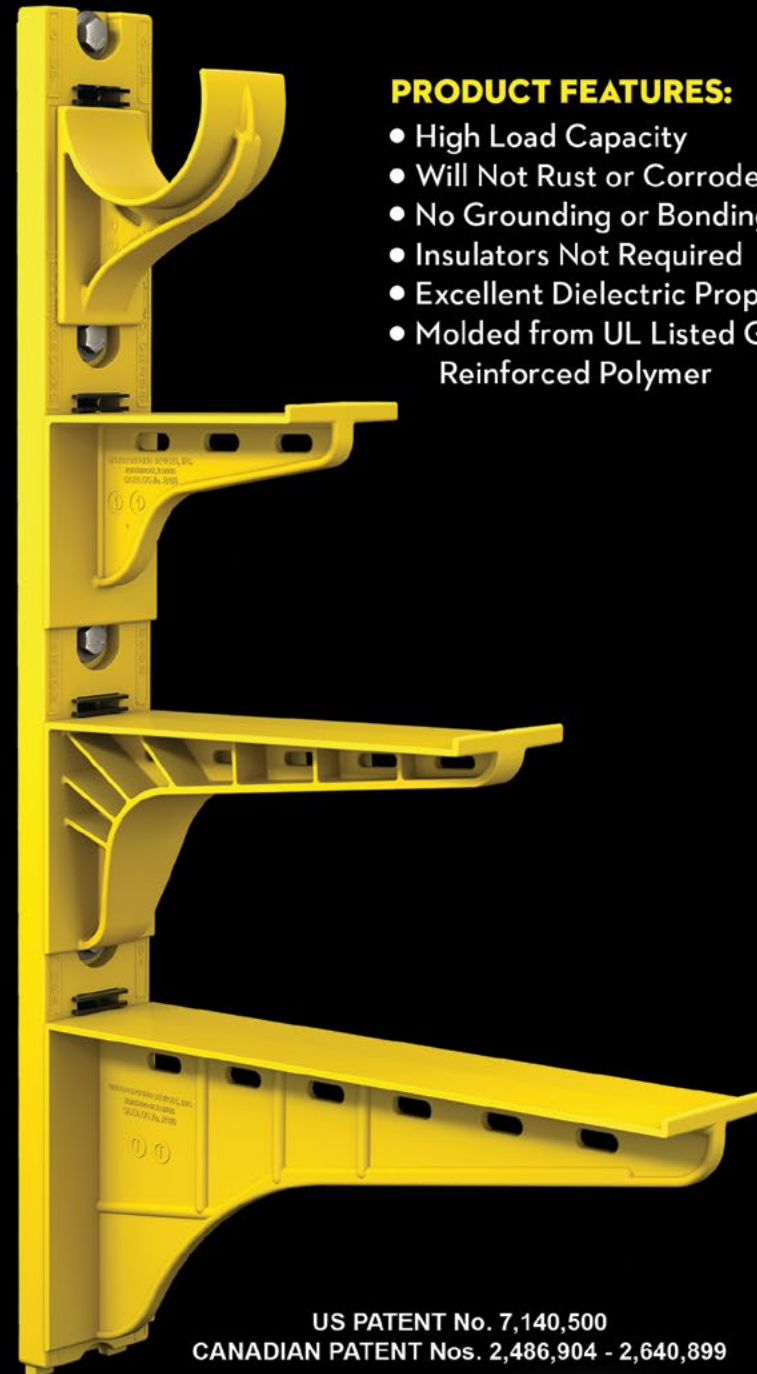
ABOUT DMF, INC.

DMF brings a refined, design-forward approach to illumination, pairing industry-leading technology with uncompromising performance, quality, and flexibility. Our in-house research and development team engineers modular lighting systems that deliver exceptional aesthetics and easily adapt to evolving project needs and future redesigns. DMF Artafex fixtures are crafted to produce precise color rendering, smooth, flicker-free dimming, and outstanding energy efficiency. The result is lighting that enhances the character of a space, elevating how it looks, feels, and functions. At DMF, we understand that light is more than illumination; light is an essential element of design that shapes beauty, defines purpose, and creates spaces meant to be enjoyed. Learn more at www.dmfluxury.com.

dmf

The Heavy Duty Nonmetallic CABLE RACK

For Power and Communications Manholes And Vaults



PRODUCT FEATURES:

- High Load Capacity
- Will Not Rust or Corrode
- No Grounding or Bonding
- Insulators Not Required
- Excellent Dielectric Properties
- Molded from UL Listed Glass Reinforced Polymer



HDL Arm Lock shown with RA04 Arm and CR36-B Stanchion



3HDS - 3" throat saddle shown with a cable secured by cable ties.



RA08 - 8" arm shown with three cables secured by cable ties.

US PATENT No. 7,140,500
CANADIAN PATENT Nos. 2,486,904 - 2,640,899

UNDERGROUND DEVICES
INCORPORATED



420 ACADEMY DRIVE
NORTHBROOK, IL 60062
Phone: 847-205-9000 • Fax: 847-205-9004
Website: www.udevices.com

RefrigiWear® Launches New Spring Workwear Buyer's Guide to Help Shoppers Choose the Right Gear for Rainy & Windy Weather

RefrigiWear, the leading manufacturer of insulated industrial workwear and PPE for extreme cold, released its new Spring Workwear Buyer's Guide, a comprehensive resource designed to help workers select the right clothing, gloves and boots for working in wet, windy, and unpredictable spring weather.

As temperatures warm across much of the country, many workers face the same challenge: how to stay productive in weather that's mild and sunny one minute, then wet, windy and miserable the next. People working outdoors need comfortable and durable workwear layers that can be added or removed easily, as the day's weather and workload demand. The new guide covers the basics of dressing in lighter layers for springtime temperatures, and which workwear features give workers extra protection from the elements.

The Spring Workwear Buyer's Guide walks shoppers through key considerations, including:

The difference between waterproof and water-repellent work gear

How to layer lightweight sweatshirts to achieve maximum comfort and versatility in unpredictable weather conditions

How features like four-way stretch and reinforced knees add durability to lightweight work pants

How lightweight, waterproof work boots prevent foot fatigue without sacrificing safety toes or slip-resistant protection

How to choose grip-assisting work



gloves for wet spring weather

The guide also highlights how RefrigiWear's temperature-based Comfort Ratings, slip-resistance ratings and safety standards for high-visibility and cut-resistant gear make it easier for consumers to confidently select workwear for the most demanding jobs in construction, transportation, utilities and agriculture.

For more than 70 years, RefrigiWear has outfitted crews who work where most people won't, from freezer warehouses and refrigerated loading

docks to outdoor Alaskan jobsites in brutal winter weather and every temperature in between. That real-world experience is reflected throughout the guide, with an emphasis on durability, safety compliance, comfort, and versatility.

The Spring Workwear Buyer's Guide is available now and can be accessed online at RefrigiWear.com, where shoppers can explore all-season work gear and rainwear engineered for performance in the toughest working conditions. □

ABOUT REFRIGIWEAR, LLC

Founded in 1954, RefrigiWear® is the leading manufacturer of insulated industrial workwear, footwear, and PPE for extreme cold environments. Trusted by workers in cold storage, food processing, agriculture, construction, utilities and outdoor trades, RefrigiWear designs gear to keep people safe, productive, and warm when conditions are at their worst. RefrigiWear is based in Dahlonega, GA. Learn more at www.RefrigiWear.com.



We're Proud to be the Electricians' Friend for Over 50 Years!

New Products

IP19

4-Conduit Block

Vertical support from only one 1/4", 3/8" or 1/2" threaded or threadless rods 1/4" or 3/8" threaded holes on the side along with slots for hex head bolts for hardware are provided for conduit support.



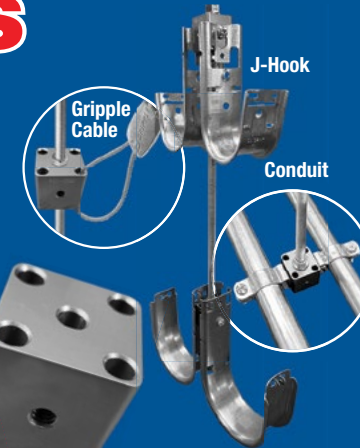
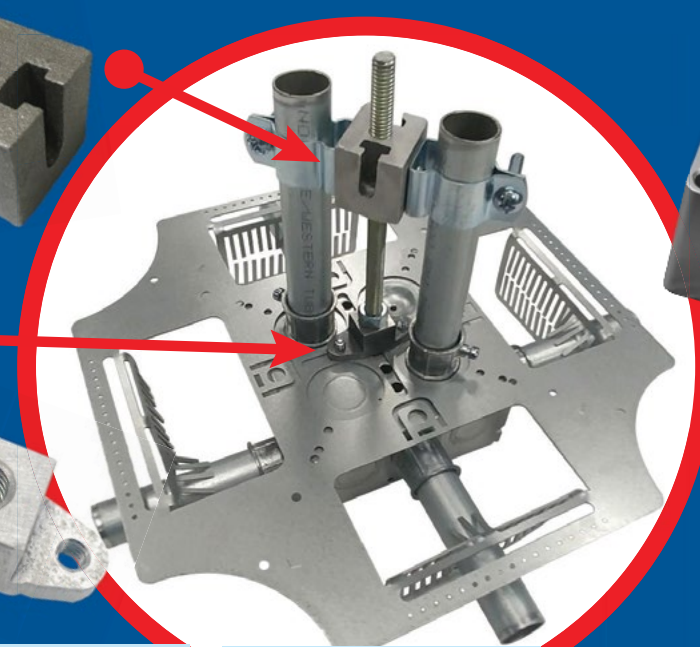
IP21a

QwikBlock

Vertical support from only one 1/4", 3/8" or 1/2" threaded rod by attaching two machine screws 1/4" x 20 thru the existing holes in back of the box. Eliminates knocking out center KO on box and traditional nut and washer method to support a single box.



Safer Better Faster

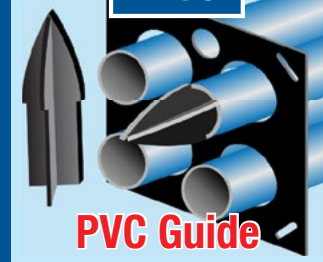


IP20a

Box Support Rod Cubes

Vertical support from only one 1/4" or 3/8" threaded or threadless rod with 4 holes for Gripple applications as well as 4 threaded 1/4" or 3/8" holes for conduit support hardware.

IP3e



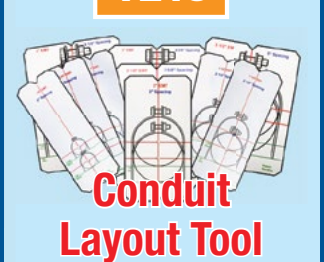
PVC Guide

IP2b



PVC Driver

TE15



Conduit Layout Tool

IP3g



Long Slip PVC

IP3f



Slip PVC/RGD

IP4



EZ Raised Bracket

For more information visit our website at SPProducts.com

Plus More Being Invented for SAFER BETTER FASTER Jobs . . . Call With Your Ideas!

Robroy Industries Names Nicole Snyder as New Corporate Controller



Robroy Industries is pleased to announce that Nicole Snyder has joined the company as Corporate Controller, based at the company's headquarters in Verona, Pennsylvania.

In this role, Snyder will lead Robroy's corporate accounting functions, including financial reporting, internal controls, and accounting operations, supporting the company's continued growth across its portfolio of electrical product brands.

Snyder brings more than 30 years of experience in accounting and financial leadership, with a career spanning

public accounting, corporate finance, and advisory services. She has worked extensively in financial reporting, forensic accounting, dispute analysis, and operational finance, helping organizations strengthen financial oversight and improve reporting systems.

"Nicole brings strong financial leadership and a broad range of accounting expertise to Robroy," said Vijay Tahiliani, Chief Financial Officer of Robroy Industries. "Her extensive background will play an important role in strengthening our financial processes as we continue to grow the business."

Prior to joining Robroy, Snyder held senior consulting and financial leadership roles advising organizations on financial investigations, dispute resolution, and trust administration. Her work has included evaluating financial records, developing reporting frameworks, and supporting organizations through litigation, compliance, and governance matters. She is a Certified Public Accountant (CPA) with a Master of Science in Taxation from Robert Morris University and a Bachelor of Science in Accounting from The Pennsylvania State University. □

ABOUT ROBROY INDUSTRIES

Founded in 1905, Robroy Industries has been a trusted leader in the electrical products market for over a century. We specialize in manufacturing high-quality products with unmatched performance, including PVC-coated and stainless steel conduit and fittings, sanitary support systems, non-metallic enclosures, galvanized elbows, couplings, nipples, and the original Korn's clamps. Our commitment to excellence is built on core values of achievement, balance, appreciation, and trust, and our fourth-generation family ownership makes us truly one of a kind. Our brands—Plasti-Bond, Stahlin, AttaBox, Robroy Stainless, Rocket Rack, and ECN/Korn's—are recognized for their innovation and reliability in serving diverse industries. With a proven past and a vibrant outlook, Robroy Industries continues to lead the way in delivering superior electrical products and solutions. For more information, visit www.robroy.com.



CANNON iK

ELIMINATE HAND PULLS & INCREASE JOBSITE EFFICIENCIES.



DMF Lighting Introduces Enhanced H Series Downlighting Solution

- New 3-inch fire- and plenum-rated housing enables a fully recessed installation in tight spaces for a clean, architectural appearance
- Field-selectable lumen switch allows three brightness levels for added flexibility to meet a range of application needs
- New housing design incorporates side knockouts to maintain its shallow profile while simplifying wiring access and streamlining contractor installation



DMF Lighting, a leading architectural lighting manufacturer of premium modular LED downlighting systems, today announced the launch of its next generation

H Series 3-inch and 4-inch downlighting collection. The enhancements include the addition of a 3-inch fire-rated and plenum-rated housing (H3FR), allowing for a fully recessed solution in shallow plenum applications or where space is limited for a clean, architectural appearance. Providing DMF's high-quality optical performance, this value-engineered solution is ideal for the tightest spaces such as between floors in hospitality and multi-unit applications including high-end condominiums, hotel guest rooms, student housing and senior living facilities, among others.

"We've evolved our cost-effective H Series to better serve the specification community," said Ken Czech, vice president of new product development at DMF Lighting. "This latest iteration provides designers with a versatile, high-performance solution for shallow plenum conditions, supporting both flush-mount and fully recessed installations from a single housing platform."

Featuring DMF's modular design (housing, light engine module and trim), the LED module's field-selectable lumens switch features three low-glare output levels (350, 750 or 950 lumens), allowing for tailored illumination across a range of applications, including spaces with ceiling heights up to 12 feet.

For more information, visit www.dmfighting.com



Appleton Releases Next Generation of IWL LED Wall Packs with Broader Lumen Range and Integrated Photocell

Appleton™, a division of Emerson, today announced a significant upgrade of its IWL LED Wall Pack Series with two new models bringing enhanced performance to one of the market's most rugged, weatherproof outdoor luminaire lines.

Purpose-built for light industrial locations, the two new luminaires each offer the versatility of four field-selectable lumen outputs ranging from 4,000 to 17,000 lumens, and three color temperatures (CCT): 5000K, 4000K, or 3000K. Delivering up to 159 lumens per watt and a CRI exceeding 80, this next generation of IWL luminaires sets a high benchmark in light quality and energy efficiency—outperforming the six models they replace.

Key Technical Enhancements:

- **Expanded Lumen Range:** Two models with four field-selectable wattage levels deliver up to 17,000 lumens for precise light level matching
- **Integrated Photocell:** Standard on/off photocell with switch control simplifies installation and reduces component requirements
- **Superior Efficacy:** Up to 159 lumens per watt maximizes energy savings
- **Optimized Design:** Greater than 10% weight reduction improves mounting ease and structural load
- **Improved Color Rendering:** CRI >80 delivers improved visual clarity and color accuracy
- **Long Service Life:** L70 > 160,000 hours @ +25 °C (+77 °F)
- **Reduced Inventories:** Consolidates the IWL offering from 6 SKUs down to just 2 SKUs

Optimized Light Distribution for Safety and Security

The combination of higher lumen output, selectable color temperature, and superior color rendering enables precise tuning for both functional visibility and security monitoring requirements. Light is projected downward and outward in a wide pattern, effectively illuminating ground-level outdoor areas for safe navigation. The optimized distribution pattern makes the wall packs ideal for high-traffic exterior zones including parking lots, walkways, loading docks, building perimeters, entrances, and tunnels.

For more information, visit www.appletonelec.com

Multi-Wattage & Color Selectable Omni-Cob Lamps

High Performance LED Lamps with up to 165 LpW

Hylite LED Lighting, a leader in innovative energy-efficient lighting solutions, is proud to announce the launch of its new Omni-Cob LED High Performance Multi-Wattage & CCT Selectable Lamps. Engineered as the "NEXGEN" of LED technology, the Omni-Cob series offers an unprecedented 9-in-1 configuration, allowing users to customize both light output and color temperature with a single lamp.

The Omni-Cob series is designed to simplify inventory management and installation for contractors and facility managers. By integrating three-position wattage regulation and three-color temperature adjustments (3000K, 4000K, and 5000K) into each unit, a single lamp can now replace multiple SKUs, ensuring the perfect lighting ambiance for any environment—from warm security lighting to crisp daylight for industrial tasks.

"The Omni-Cob series represents a massive leap forward in retrofit technology. We've combined our industry-leading efficacy of 165 Lumens per Watt with the flexibility that modern facilities demand. It's not just a bulb; it's a versatile tool that reduces energy costs by up to 90% while providing superior light quality."

KEY FEATURES:

- Multi-Wattage Options: All in 1
 - 9W-12W-18W (Up to 2,970 Lumens)
 - 22W-25W-27W (Up to 7,425 Lumens)
 - 36W-45W-60W (Up to 13,200 Lumens)
 - 70W-80W-100W (Up to 16,500 Lumens)
- 3 Color Temperature Options: All in 1
 - 3000K-4000K-5000K
- Rated up to 60,000 Hours of Lamp Life
- Energy-Efficient Illumination: 165 LpW
- Up to 90% Savings on Your Energy Costs
- Omni-Directional 360° Illumination
- Universal Voltage: 100-277VAC or 120-347V



The Omni-Cob series is ideal for a wide array of applications, including post-tops, bollards, high-bay fixtures, and decorative street lighting. With its internal driver and ballast-bypass "Plug & Play" installation, transitioning to high-performance LED has never been more efficient. For more information about the Hylite LED Omni-Cob and other Hylite LED Lighting products, please visit our website.

For more information, visit hyliteledlighting.com/omni-cob



Leviton Introduces the VerifEye® Series 2500 Submeter: A Scalable, Field-Programmable Energy Monitoring Solution

New submeter streamlines product selection and installation

Leviton recently announced the launch of the VerifEye® Series 2500 Submeter, a versatile energy monitoring solution engineered to support single-, two- and three-phase applications with a single model.

The Series 2500 streamlines product selection, installation, commissioning and long-term performance. Designed for installers, the submeter includes a configuration wizard, built-in diagnostics and alarms that reduce setup time and help ensure accurate wiring and operation.

Housed in a NEMA 3R-rated enclosure, the Series 2500 is suitable for indoor and outdoor environments and can be ordered as a kit with current transformers or as separate components.

The submeter features multiple conduit entry locations and tool-free connectors with clearly marked connections for pulse output, Modbus communication and current transformer wiring. A user-friendly configuration wizard guides installers through the meter setup in minutes. Built-in diagnostic icons verify proper wiring and operation, reducing installation time and ensuring reliable performance. Integrated alarms help identify and troubleshoot issues for end users, improving long-term reliability.

"The Series 2500 Submeter reflects Leviton's commitment to delivering innovative solutions that minimize complexity and save time during installation," said Tom Leonard, vice president and general manager of Leviton Lighting Controls. "Designed for flexibility and scalability, Series 2500 provides a simple, contractor-friendly package delivering real savings in time and labor."

Ideal for new construction and retrofit projects across commercial and industrial applications, the Series 2500 meets ANSI C12 accuracy requirements and includes flexible mounting options, tamper-resistant features and an optional flush-mount kit.

For more information, visit www.leviton.com/verifeye

Newly Launched Extech.com Website Brings the Full Extech Lineup to a Dedicated Online Home

Extech, a Teledyne Flir brand, today announced the launch of Extech.com, a refreshed, dedicated website designed to make exploring Extech tools easier, faster, and more intuitive for technicians, field professionals, and distributor partners.

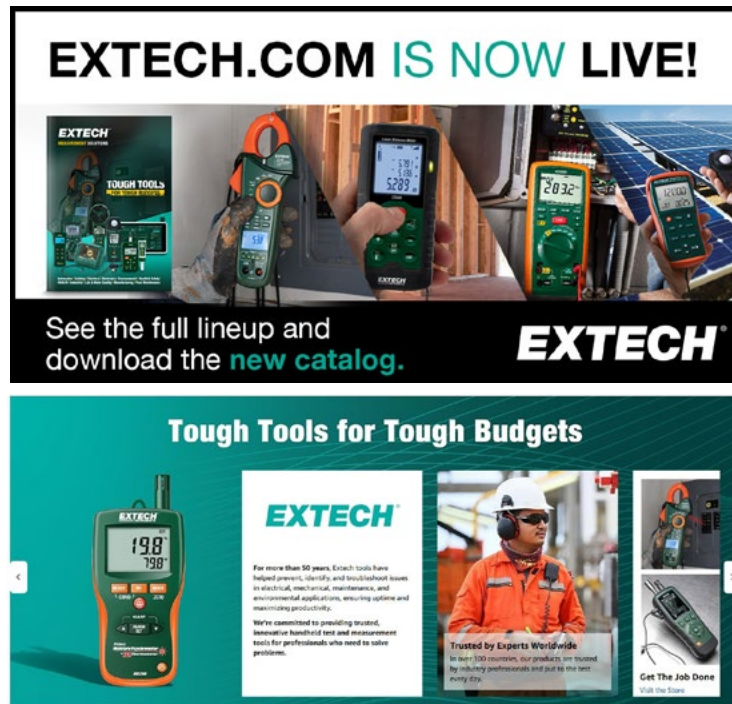
The new site brings the Extech brand back to its own recognizable online home, offering a modernized experience centered around the tough, reliable tools professionals depend on.

A focused destination for Extech tools, www.Extech.com delivers streamlined navigation and clearer product organization, making it simple for users to browse categories, compare tools, and find the right solution for their work. The full Extech lineup is now accessible in one place with updated product information throughout.

Updated Catalog Available on www.Extech.com

Alongside the website launch, the updated Extech catalog is now available for download directly on the site. The catalog provides an easy reference point for product specifications and comparison and is offered in English, German, French, Spanish, Italian, and Portuguese.

“The launch of Extech.com gives the brand the dedicated online presence it deserves,” said Heliel Morales, Business Development Director for the Extech brand. “The new site delivers a significantly improved user experience, making it easier for customers and partners to explore our tools, review specifications, and access the latest catalog whenever they need it.”



For more information, visit www.extech.com

Milwaukee® Introduces BOLT™ Personal Voltage Detector for Enhanced Jobsite Awareness

Milwaukee Tool expands their jobsite safety solutions with the new BOLT™ Personal Voltage Detector, delivering the most consistent alerts, easiest operation, and secure integration within the BOLT™ System. Designed to increase awareness when working around live electrical sources, this solution provides clear alerts without the risk of user error from sensitivity adjustments.

The BOLT™ Personal Voltage Detector features a wide detection field and clearer voltage alerts to help users quickly identify the presence of voltage. This solution's single-mode operation eliminates sensitivity-setting mistakes, ensuring reliable performance every time it's used. Designed for seamless integration, the Personal Voltage Detector mounts securely to the BOLT™ Front Mount and remains compatible with all MILWAUKEE® BOLT™ Safety Helmets and Hard Hats, allowing users to secure multiple accessories simultaneously. Powered by a USB-C rechargeable internal battery, the BOLT™ Personal Voltage Detector delivers up to 32 hours of runtime, helping tradespeople stay protected throughout long workdays without frequent recharging.

For more information, visit www.milwaukeetool.com



B2 RAPID FIRE BENDER WITH TOUCH CONTROL

BEND UP TO 2" EMT, IMC, RIGID OR ALUMINUM CONDUIT WITH ONE SHOE



STOP SEARCHING FOR CORRECT BEND ANGLES

STORE UP TO 5 OF YOUR FAVORITE BRANDS



ITOOOLCo.



SP PRODUCTS, INC.
Productivity and value thru ideas
FOR SAFER BETTER FASTER JOBS



Sealtite/Liquidtite to EMT



**Transitions from
Liquidtite to
EMT in minutes**

**Great for wiring
transformers,
solar systems
& pumps.**

All SP Products Inc.
Transition Fittings are manufactured
for installation to either meet or
exceed in accordance with NEMA TC2,
TC3 or UL 651 specifications

**PATENT
PENDING**



1/2" thru 4"

Transition Couplings

Size	Catalog #
1/2"	50-LT-EMT
3/4"	75-LT-EMT
1"	100-LT-EMT
1-1/4"	125-LT-EMT
1-1/2"	150-LT-EMT
2"	200-LT-EMT
2-1/2"	250-LT-EMT
3"	300-LT-EMT
3-1/2"	350-LT-EMT
4"	400-LT-EMT

**2025 NECA
Show Stopper
WINNER**

SP PRODUCTS, INC
Productivity and value thru ideas



**PATENT PENDING
PATENTED**



LABELS APPLY TO PRODUCTS ONLY WHERE SHOWN ABOVE

730 Pratt Boulevard • Elk Grove Village, IL 60007
P: (847) 593-8595 • F: (847) 593-8629 • Toll-free (800) 233-8595
E: info@spproducts.com • www.spproducts.com

IP13bb

Polaris® Expands Compression Connector Portfolio

Now Available, the Line Offers New Wire Sizes for Both Copper and Aluminum Long Barrel Compression Lugs

Polaris®, the trusted name in power connectors and grounding solutions, is proud to announce the expansion of its Compression Connector portfolio. Now available, the line offers increased variety for both copper and aluminum long barrel compression connectors.

“This expansion reinforces Polaris’ commitment to delivering complete, installer-ready compression solutions that support larger applications including data centers, utilities, industrial, and high-capacity commercial projects,” said Nolan Bello, Director of Product Management - Polaris. “Our Compression Connectors are the professional’s choice for reliability and ease of use as they are compatible with more than 35 major crimp tools and come with clearly legible size markings to save installers time.”

The additions include:

- Expanded L Series and related configurations of long barrel copper lugs up to 1000 MCM
- 1- and 2-hole lugs
- Options with inspection window
- Narrow tang configurations for space-constrained installations
- Expanded AL Series aluminum compression lugs up to 1000 MCM
- Standard tang configurations
- Narrow tang options (AL-N-NT Series)

“Polaris Compression Connectors offer improved performance, simplified installation, clear color coding, enhanced durability, oxide inhibitor on aluminum connectors, and are UL-Listed for more than 35 leading crimp tools from most major brands,” Bello added. “Polaris continues to grow our product offerings so that we will always meet the demand for those markets and industries that require compression coverage for higher amperage and large conductor applications.”

With Polaris, contractors can trust that their compression connections will meet UL-listed standards with tools they already rely on, helping avoid costly rework and ensuring every connection is done right the first time.

For more information, visit
www.nsiindustries.com/polaris-compression/



New Easy-To-Install Pop-Up Power Solution

Code-compliant power solution that rests below the countertop until needed.

Task Lighting & Power, a Hardware Resources brand, has introduced Pop-Up Power devices that offer code-compliant, easy access to power. Designed for performance, the Task Pop-Up Power solution is compliant with 2023 NEC code, ETL listed, and IP20 rated. It is an ideal solution for adding power access to kitchen islands, offices, and workstations.

The Pop-Up Power devices install easily with no electrician required: a simple 3-1/8” diameter cutout allows the device to drop into place, tighten, and plug into a GFCI outlet. Customers select from two options: a four-outlet model or an eight-outlet model that also features two USB-A and two USB-C receptables for charging electronic devices.

Supported by Task Lighting & Power’s free Design Services team and quick shipping, Pop-Up Power makes power integration straightforward for designers, fabricators, and installers. It also ships quickly, arriving assembled and ready to install.

For more information, visit
www.TaskLighting.com



AUTHORIZED DISTRIBUTOR OF



Deluxe Geared Maintenance Tool Kit

Cementex Double-insulated Tools:

- Comply with the IEC 900 standard
- Comply with ASTM F1505-01 standard
- Help you meet requirements of OSHA Safety Related Work Practices, NFPA 70E Standard and CSA-Z462

Cementex Double-insulated Tools are:

- Tested to 10,000 VAC and rated for 1,000 VAC when working on live parts
- Manufactured in the USA with domestic and global materials.
- Marked with the international safety symbol – (double triangle) 1000V

Class 00 Arc Flash Glove Kit

Class 00 arc flash glove kit from Cementex is a good option for a reliable kit for work with 500 Volts or less. The gloves are made of natural rubber construction, offering the required dielectric properties combined with flexibility, strength, and durability. Gloves feature rolled cuffs, and are anatomically shaped thereby reducing hand fatigue. Each glove is chlorinated for maximum comfort.

Components of Cementex IGTK00-11 glove kit:

- 11” long Class 00 rubber insulating gloves
- Leather protectors
- Canvas storage bag



CALL US TODAY

(703) 367-0404

OR VISIT OUR ONLINE ELECTRICAL SAFETY EQUIPMENT STORE
www.electricalsafetyequipment.com

Eaton's Wiring Devices Expands its Code-Compliant Portfolio of Reliable Hospital-Grade Solutions

Eaton's Wiring Devices has expanded its offering of healthcare receptacle solutions with the launch of its EZ Link™ Slim Hospital Grade GFCI Receptacles, engineered to deliver enhanced safety, simplified installation and dependable performance in critical care environments.

The new code-compliant GFCI receptacles build on Eaton's legacy of innovative, contractor-focused solutions, offering a streamlined approach to installation while meeting the rigorous demands of healthcare facilities. Designed to improve efficiency and reduce labor time, the EZ Link system supports faster project completion without compromising reliability.

At the core of the EZ Link design is an intuitive, arrow-shaped connector that slides and locks securely into place at the back of the device. Integrated guide rails ensure precise alignment, minimizing installation errors, while convenient release wings enable quick, one-handed removal. This modular approach allows installers to complete wiring during rough-in and efficiently connect devices at trim-out, significantly reducing on-site labor and skilled trade requirements.

Available in both standard and tamper-resistant configurations, the hospital-grade receptacles feature a wide TEST/RESET button and a prominent reset indicator light, enabling quick identification and response to trip events. An integrated end-of-life indicator flashes red to clearly signal device failure, helping facilities teams proactively address maintenance needs and avoid unnecessary service calls. Each device is also clearly marked for hospital-grade identification, ensuring easy recognition in demanding environments.

Engineered for performance and peace of mind, the receptacles meet the latest UL and NEC safety standards, providing the reliable electrical protection essential to patient care.



For more information, visit www.Eaton.com/WDHealthcare

Seamless by Design: Radialux 5.5 COB Combines RGB Color-Changing with Tunable White

Alloy LED's Radialux 5.5 COB RGBTW Tape Light represents a refined convergence of performance and design versatility. This premium five-channel tape light seamlessly integrates dynamic RGB color-changing with tunable white light ranging from 2700K to 6500K, all within a dot-free Chip-on-Board (COB) construction. The result is a smooth, uninterrupted line of illumination that elevates architectural spaces.

Designed for use with advanced controllers, Radialux 5.5 COB delivers precise five-channel control, enabling everything from richly saturated hues to delicate pastels and perfectly calibrated white light — all from a single, unified source. Its seamless output ensures a clean, continuous aesthetic, even in direct-view applications where visual consistency is paramount.

Designed with flexibility in mind, the tape light extends 14 feet and can be field-cut at 1.64-inch intervals, allowing for tailored installations across a range of applications, from hospitality and retail to high-end residential and commercial spaces.

For more information, visit www.alloyled.com



Galvanized Rigid Transition Couplings to Schedule 40/80 PVC Stub-Up



Save at Least **1 Hour** per Installation.

When Concrete is Poured and Metal Below the Slab is Needed

Transitions in Less Than 5 Minutes!

Save Cost on the Rigid Nipple, Tape & Labor

Use for Entire Job - Not Just for Repair



Saves a great deal of time transitioning from PVC conduit to Rigid Conduit above slab without damaging PVC risers and chipping concrete eliminating a concrete repair job!

All SP Products Inc. Transition Fittings are manufactured for installation to either meet or exceed in accordance with NEMA TC2, TC3 or UL 651 specifications

1/2" thru 6"

Size	Catalog #
1/2"	50-PVC-R-GRC
3/4"	75-PVC-R-GRC
1"	100-PVC-R-GRC
1-1/4"	125-PVC-R-GRC
1-1/2"	150-PVC-R-GRC
2"	200-PVC-R-GRC
2-1/2"	250-PVC-R-GRC
3"	300-PVC-R-GRC
3-1/2"	350-PVC-R-GRC
4"	400-PVC-R-GRC
5"	500-PVC-R-GRC
6"	600-PVC-R-GRC

All Above Meet UL651 CSA C22.2, No.85 and US Army Corps Engineers Specifications

See Our Conduit Plug See page IP27c

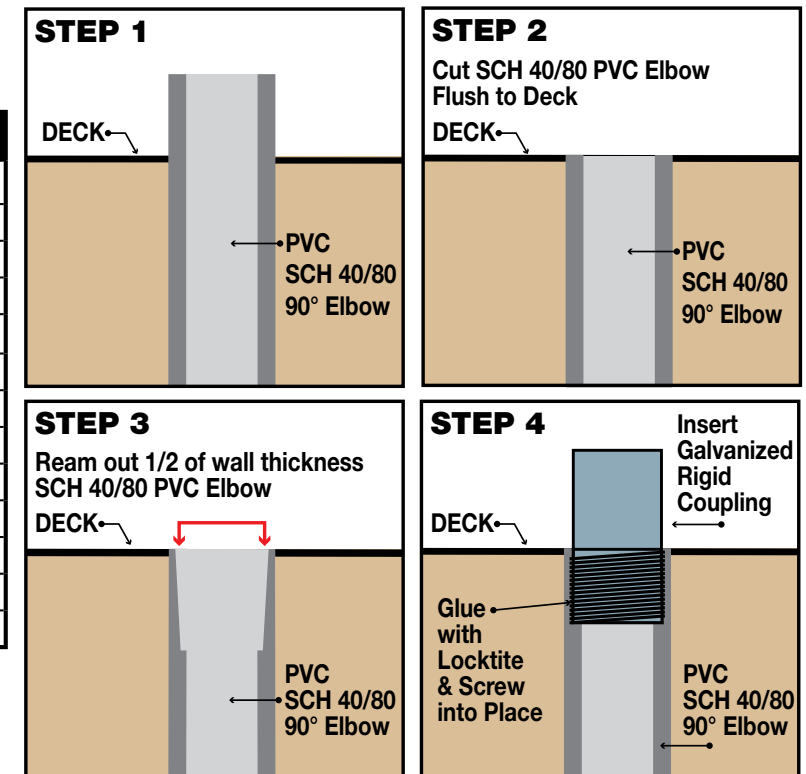


See Our REAMING BITS for Transition Couplings



See page IP15

PATENT PENDING



Customer must satisfy all codes and owners' specifications.



PATENT PENDING PATENTED



LABELS APPLY TO PRODUCTS ONLY WHERE SHOWN ABOVE

730 Pratt Boulevard • Elk Grove Village, IL 60007
 P: (847) 593-8595 • F: (847) 593-8629 • Toll-free (800) 233-8595
 E: info@spproducts.com • www.spproducts.com

This advertiser index is compiled as a courtesy to our readers. While every effort is made to provide a complete and accurate listing of companies and page numbers, the publisher is not responsible for errors. **Click the company name or page number to see their advertisement.**

Company	PG#	Company	PG#
APPLETON / EMERSON	3	MILLER SAFETY CONSULTANTS LTD	7
APPLETON / EMERSON	15	MILLER SAFETY CONSULTANTS LTD	29
BASETEK, LLC	5	SP PRODUCTS INC	1
CONDUIT REPAIR SYSTEMS	4	SP PRODUCTS INC	19
iTOOLco	IFC	SP PRODUCTS INC	26, 27
iTOOLco	21	SP PRODUCTS INC	31
iTOOLco	25	SP PRODUCTS INC	BC
iTOOLco	IBC	UNDERGROUND DEVICES	11
KNOCK'ER-IN	13	UNDERGROUND DEVICES	17
KRENZ & COMPANY	32		

CORDLESS CANNON 6K

iTOOLco.
 WWW.iTOOLco.com | 865.670.3713



Speed, versatility, and performance are all yours with iTOOLco's Cordless Cannon 6K™. This portable 6,000 lb. puller is intuitively designed to handle all of your day-to-day wire pulls.

The built-in capstan switch automatically turns the puller on and off. Simply tug on the rope to start the pull and slack off the rope to shut it down. Delivers dynamic performance in remote locations or areas where power is not yet available.



When it comes to transformer cooling fans, Krenz-Vent is the industry recognized gold standard. Our leadership position is earned through 80+ years of R&D plus our superior engineering and customer service. You can rest easy when you specify Krenz fans.

ENGINEERED TO COOL
 There is no comparison.

KRENZ & COMPANY, INC.
 KRENZVENT.COM • 262.255.2310 • KRENZ@KRENZVENT.COM

ALL THE INFORMATION YOU NEED IS JUST A CLICK AWAY AT **WWW.EPSMAG.NET**

Electrical Products & Solutions

Transition Couplings
 PVC Bell End Adapter
 Galvanized Rigid Conduit - 1/2" thru 6"

Warming Up to Electrical Heating Cables

WHAT'S NEW

- Conduit Repair Systems, Inc.
- DMF Lighting Expands its M Series Commercial Collection with High Lumen Packages for Hospitality and Mix-Use Spaces
- New Multi-Tester from Klein Tools® Combines Core Electrical Products into One Model
- HPS Launches SineWave Filter To Safeguard Motor and Cables



SPPRODUCTS, INC.

Productivity and value thru ideas
FOR SAFER BETTER FASTER JOBS



We're Proud to be the Electricians' Friend for Over 50 Years!

IP5

"The Original"

Enter Any KO on Both Sides of the Box



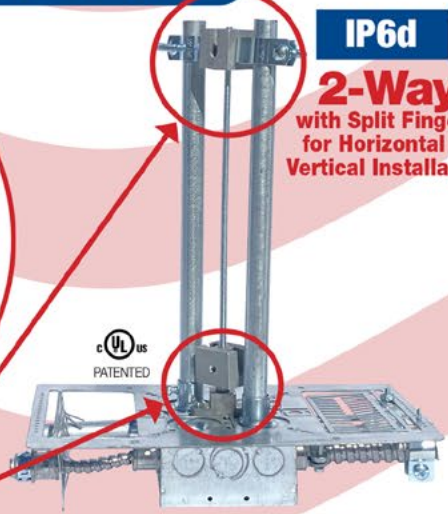
IP19/20
4-Conduit Block
PATENTED

IP21a
QwikBlock
PATENT PENDING

Use 4-Conduit Block (IP19 or IP20) with QwikBlock (IP21a)

IP6d

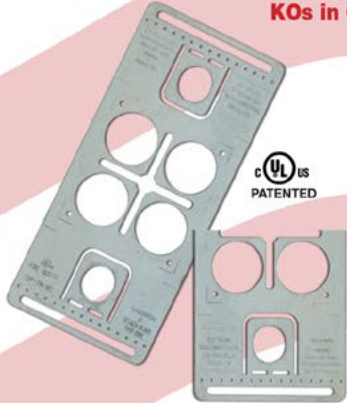
2-Way
with Split Fingers for Horizontal or Vertical Installation



IP6

4-Way

Enter Any KO on All 4 Sides of the Box Plus 4 Large Open KOs in Center Allows Entering Back of Box

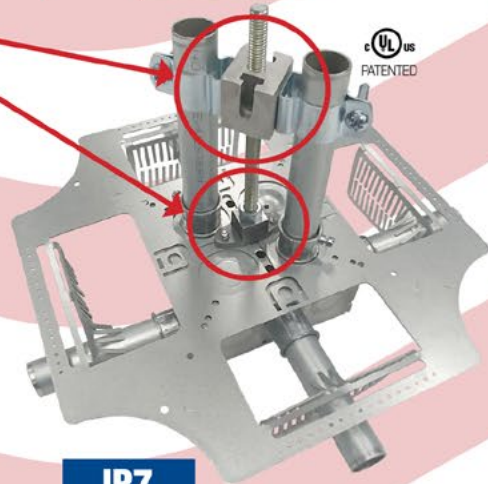


IP6a

2-Way/Half

Enter Any KO on 1 or 2 Sides of the Box Plus Large Open KOs in Center Allows Entering Back of Box

Our Family of Conduit & Box Support Plates Saves Valuable Time & Money!



IP7

4-Way

with Split Fingers for Horizontal or Vertical Installation. Enter Any KO on All 4 Sides of the Box Plus 4 Large Open KOs in Center Allows Entering Back of Box.



PATENT PENDING

IP8

Mount Horizontally or Vertically from One Single Support

20 x 20

Supports up to 12 x 12 J-Box

28 x 28

Supports up to 20 x 20 J-Box

MADE IN THE USA!

Plus More Being Invented for *SAFER BETTER FASTER* Jobs . . . Call With Your Ideas!

SPProducts.com 800-233-8595 info@SPProducts.com